



1. Please provide any information on violence against or the attitude to Christians in the Assoun region.

No reports could be found of violence or discrimination specifically targeting Christians in Assoun (also Aasoon). Two reports were located describing a violent incident in Assoun between Sunni militants and the Lebanese armed forces in 1999.

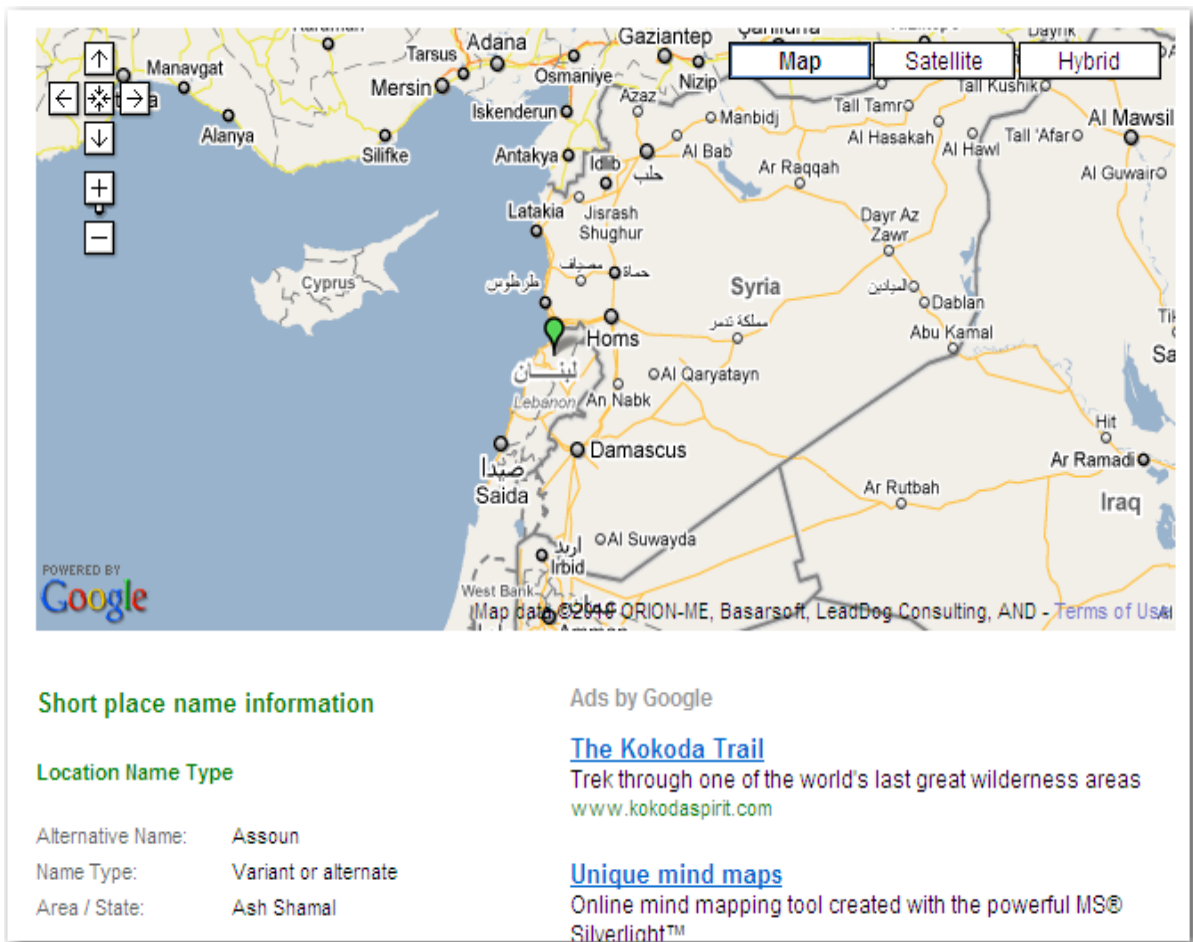
Assoun – Location

The village of Assoun is located in the North governorate of Lebanon, which is highlighted in green on the map below from the Lebanese Ministry of Tourism website:¹

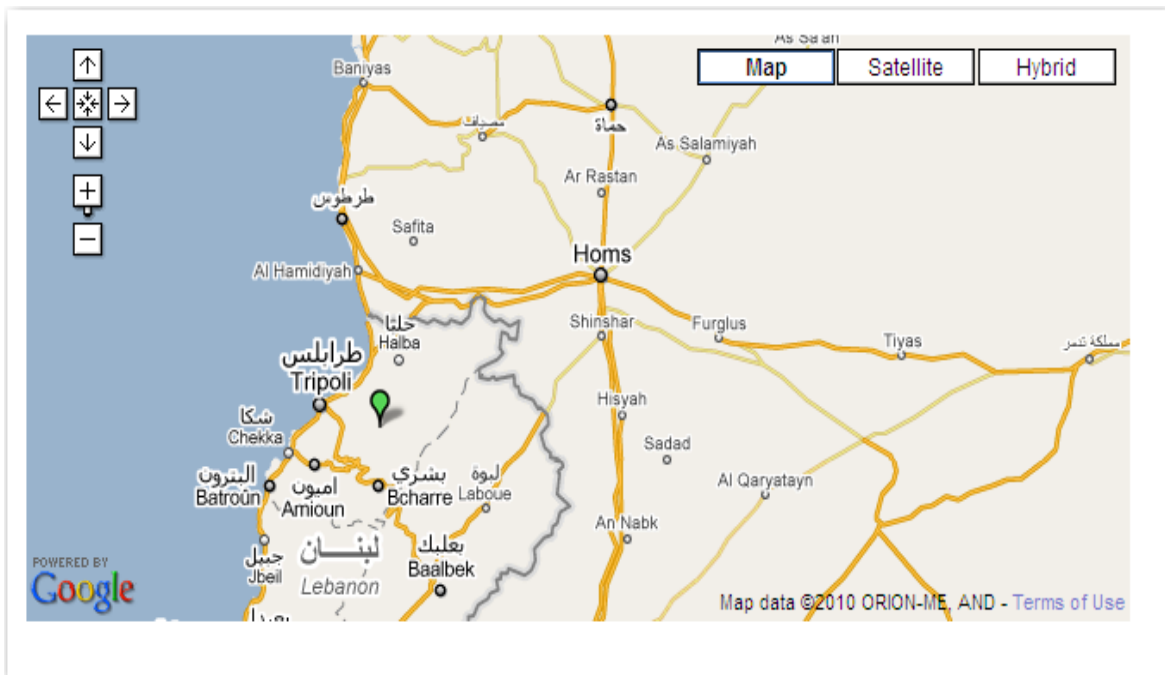


¹ 'Map of Lebanon showing regions' (undated), Ministry of Tourism: Destination Lebanon website <http://www.destinationlebanon.gov.lb/About/Map.aspx> – Accessed 10 February 2010 – Attachment 29

Aassoun was marked on a Google map posted on social networking/travel blog site Traveljournals.net.² The maps below are screen shots taken from the map on at various magnifications:



² Assoun, Ash Shamal' 2004, Traveljournals.net website, 27 February
<http://www.traveljournals.net/explore/lebanon/map/m1158979/assoun.html> – Accessed 10 February 2010 – Attachment 1.



A Wikipedia entry on the districts and municipalities of Lebanon lists Assoun as part of the Miniyah-Danniyeh District.³

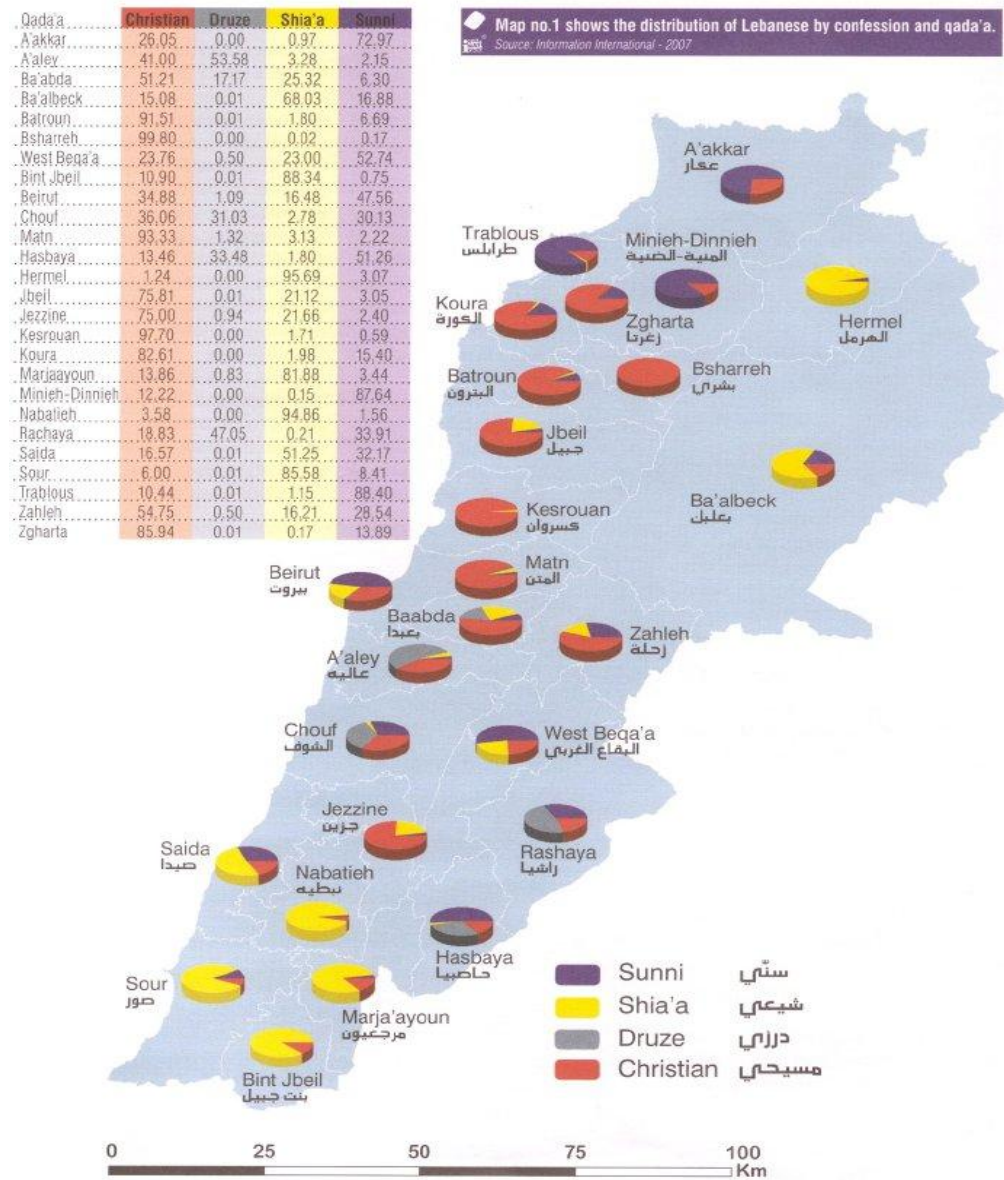
³ 'Municipalities of Lebanon' 2010, Wikipedia, last updated 16 January –

http://en.wikipedia.org/wiki/Municipalities_of_Lebanon - Accessed 10 February 2010 – Attachment 6.

Wikipedia is a Web-based free-content encyclopaedia which is compiled collaboratively by volunteers.

Wikipedia articles can be useful introductory reading for a new topic, and the list of references in Wikipedia articles can provide useful leads to reliable sources. Many Wikipedia articles can be highly reliable, especially in regards to non-controversial historical or factual matters, and Wikipedia uses preventative measures against vandalism, bias and inaccuracy. However, the collaborative nature of Wikipedia makes it vulnerable to contributors with overt or covert agendas, and Wikipedia articles are thus prone to unacknowledged bias.

The map below published in the Mideast Monitor and sourced from Information International illustrates the regional religious demographics of Lebanon; Minieh-Dinnieh is listed as 87.64% Sunni Muslim and 12.22% Christian⁴ (the US Department of State estimates the overall Christian population at 21% and the combined Sunni-Shia Muslim population at 56%).⁵ It is noteworthy, however, that an official census has not been undertaken in Lebanon since 1932 due to the sensitivity of the issue of electoral representation according to confessional group.⁶ This issue is addressed further in Question 2.



Issue 62 - published by Information International s.a.l.

⁴ 'Voter Registration by Sect' in Farha, Mark 2008, 'Demography and Democracy in Lebanon', *Mideast Monitor*, vol. 3: 1, January-March http://www.mideastmonitor.org/issues/0801/0801_2a.htm – Accessed 1 March 2010 – Attachment 41

⁵ US Department of State 2009, *International Religious Freedom Report for 2009 – Lebanon*, Section I, October – Attachment 9

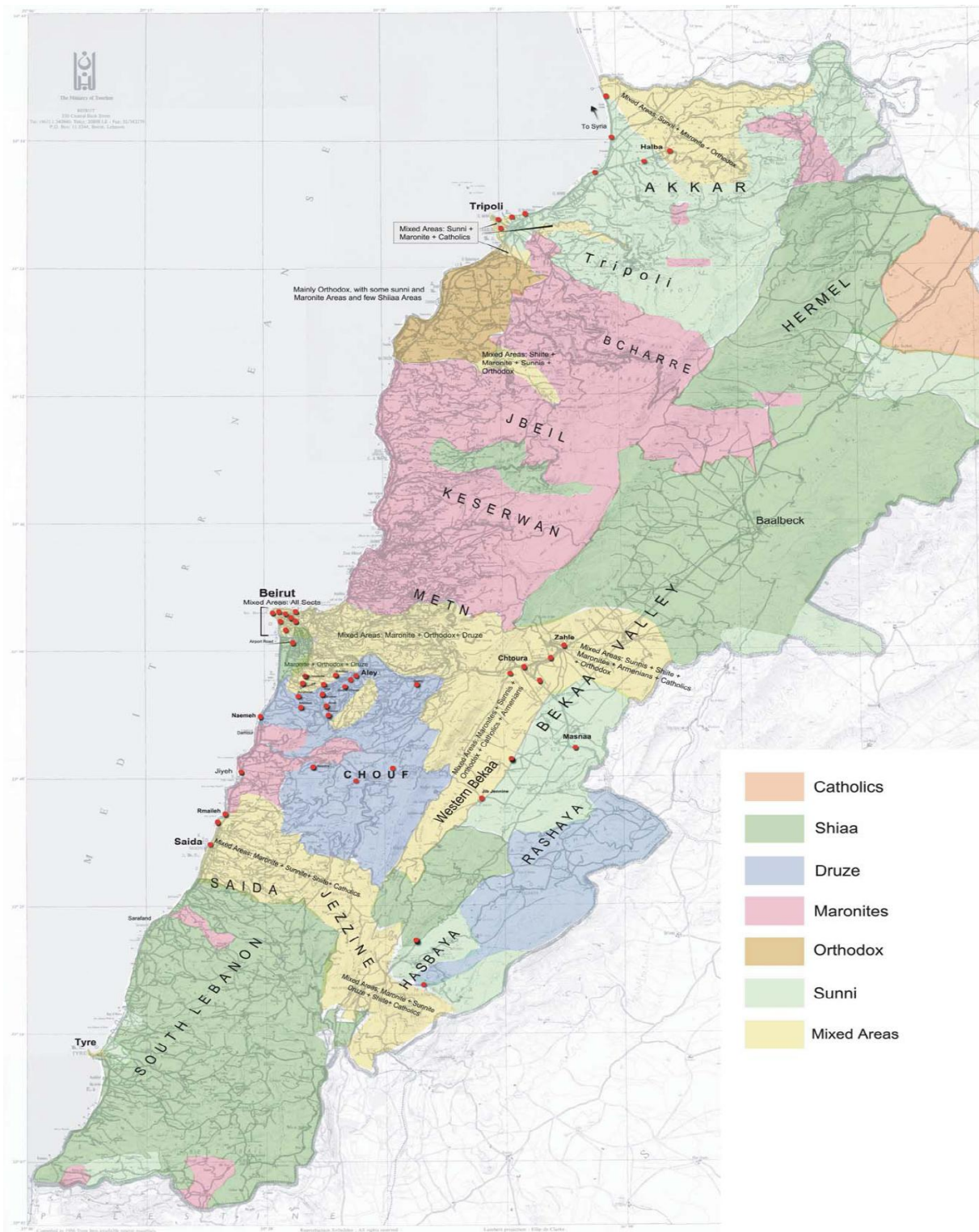
⁶ US Department of State 2009, *International Religious Freedom Report for 2009 – Lebanon*, Section I, October – Attachment 9

The maps below found (respectively) on Spiegel Online News⁷ and the Lebanon Support website⁸, confirm that the Minieh-Dinnieh district is a predominantly Sunni Muslim area, though located close to districts with large Christian populations:



⁷ 'Distribution of religious groups and parliamentary representation in Lebanon' 2007, *Spiegel Online News*, 1 October <http://www.spiegel.de/international/spiegel/0,1518,457002-2,00.html> – Accessed 11 February 2010 – Attachment 12

⁸ 'Mapping of Vulnerabilities in Lebanon (SE-1) (Deprivation Indicators, 1996)' 2008, Lebanon Support website, June [http://www.reliefweb.int/rw/fullMaps_Sa.nsf/luFullMap/00BD785A71C24C8885257474007067B1/\\$File/ls_SE_C_Ibn080626.pdf](http://www.reliefweb.int/rw/fullMaps_Sa.nsf/luFullMap/00BD785A71C24C8885257474007067B1/$File/ls_SE_C_Ibn080626.pdf) - Accessed 10 February 2010 – Attachment 3



Violence in Assoun

A report published in the *Middle East Intelligence Bulletin* in 2000 describes a violent confrontation between regional Lebanese ISF and “an obscure band of 200-300 Sunni militants calling themselves Takfir wa al-Hijra” in Assoun on 30 December 1999, in which five Lebanese soldiers were killed. The article reports that the militants were defeated in the

following days, with “an estimated 13,000 Lebanese army troops backed by tanks and artillery...driving isolated bands of surviving guerrillas into remote areas of north Lebanon”.⁹

An article located in the *Al-Ahram Weekly* documents a similar version of events, noting that Assoun is “said to be a stronghold” of Al-Takfeer Wal-Hijra.¹⁰ Neither article states that the attack in Assoun was intended to target Christians; indeed, both report that the militants attacked the Lebanese army, an institution comprising mainly Shia Muslim and Christian officers, and considered one of only a few truly national institutions.¹¹

The article published in the *Middle East Intelligence Bulletin* notes that Takfir wa al-Hijra had gone virtually unmentioned in the Lebanese media until the group allegedly bombed four Orthodox Christian churches in and around Tripoli in October and November 1999. It further states that the group’s leader, Bassam Ahmad Kanj (also known as Abu Aísha) is alleged to have received financial support from Osama bin Laden.¹² The UK Home Office also notes the group’s alleged links to *al-Qaeda*.¹³ While the bombing of Christian churches indicates that the group does on occasion target Christians in acts of terrorism, the UK Home Office’s Country of Origin Report for Lebanon notes that Al-Takfeer Wal-Hijra “advocates the brutal torture and murder not only of ‘infidels’ but also of Muslims who do not adhere to the Takfir doctrines”.¹⁴

No reports were found documenting any other further violent confrontations in Assoun since the above conflict of 30 December 1999.

2. Is there any information on discrimination against Christians in regards to employment?

No reports were found describing discrimination against Christians in Lebanon in regards to employment.

The US Department of State’s 2009 Report on International Religious Freedom (USIRF) notes that the Lebanese Constitution:

provides that Christians and Muslims be represented equally in Parliament, the Cabinet, and high-level civil service positions, which include the ministry ranks of Secretary General and Director General. It also provides that these posts be distributed proportionally among the recognized religious groups.¹⁵

⁹ Gambill, Gary C. 2000, ‘Syrian, Lebanese Security Forces Crush Sunni Islamist Opposition’, *Middle East Intelligence Bulletin*, January – Attachment 4

¹⁰ Yehia, Ranwa 2000, ‘Islamists on a rampage in Lebanon’, *Al-Ahram Weekly*, Issue 464, 13-19 January <http://weekly.ahram.org.eg/2000/464/re3.htm> – Accessed 10 February 2010 – Attachment 7

¹¹ Immigration and Refugee Board of Canada (IRB) 2008, LBN102732.FE – *Lebanon: Treatment of Christians and availability of state protection for Christians; whether Hezbollah targets Christians in particular (2007-2008)*, 22 February – Attachment 8

¹² Gambill, Gary C. 2000, ‘Syrian, Lebanese Security Forces Crush Sunni Islamist Opposition’, *Middle East Intelligence Bulletin*, January – Attachment 4

¹³ UK Home Office 2006, *Country of Origin Information Report – The Lebanon*, July, pp.100-101 – Attachment 5

¹⁴ UK Home Office 2006, *Country of Origin Information Report – The Lebanon*, July, pp.100-101 – Attachment 5

¹⁵ US Department of State 2009, *International Religious Freedom Report for 2009 – Lebanon*, Section II, October – Attachment 9

While the apportioning of political offices according to religious affiliation is ostensibly designed to foster inclusiveness and representation, the USIRF report notes that the system “may be viewed as inherently discriminatory”.¹⁶ However, if anything Christians are subject to positive discrimination under government provisions; the US Department of State estimates the Christian population at 21% and the combined Sunni-Shia Muslim population at 56%¹⁷, raising the issue of how “representative” an equal share of government positions is.¹⁸ It is, however, important to take into account (as noted in Question 1) that estimates of Lebanon’s religious demography vary because no official census has been undertaken since 1932.¹⁹ While population estimates may vary, Mark Farha notes in the *Mideast Monitor* that nevertheless,

...one preliminary conclusion is inescapable... Lebanon’s current power-sharing covenant is far out of step with demographic realities. Even the most conservative statistical conjectures leave Lebanese Muslims significantly underrepresented in the parliament and the council of ministers...²⁰

Outside of the public service, the USIRF report states that there are “periodic reports of societal abuses or discrimination based on religious affiliation, belief, or practice”; however the report does not provide details of any discrimination on the basis of employment.²¹

An opinion piece published last year on Lebanese online news site *Ya Libnan* asserts that the system of proportional political representation based on religious affiliation affects access to services and employment, though it does not argue that any particular group is particularly or systematically discriminated against:

Whether seeking to marry or applying for a job, the first question is always what religious confession you belong to... Confessionalism deepens sectarian differences by encouraging allegiance to one’s ethnic group over the state. Dependencies within one’s confession are emphasized: religious institutions exercise control over many facets of life, such as marriage and inheritance. Indirect controls and clannish clientelism are also plentiful: **jobs**, housing, and education are often obtained through appeals to confessional political representatives [*Tribunal’s emphasis*].²²

¹⁶ US Department of State 2009, *International Religious Freedom Report for 2009 – Lebanon*, Introduction, October – Attachment 9

¹⁷ US Department of State 2009, *International Religious Freedom Report for 2009 – Lebanon*, October, Section I – Attachment 9

¹⁸ For an opinion piece regarding the imbalance of Christian-Muslim political power in Lebanon, see Ciezadlo, Annia 2005, ‘Lebanon’s Election: Free but Not Fair’, *Washington Post*, 22 May <http://www.washingtonpost.com/wp-dyn/content/article/2005/05/20/AR2005052001868.html> – Accessed 11 February 2010 – Attachment 10

¹⁹ For a more detailed analysis of the various problems associated with indirect estimating of Lebanon’s religious demography, see Farha, Mark 2008, ‘Demography and Democracy in Lebanon’, *Mideast Monitor*, vol. 3: 1, January-March http://www.mideastmonitor.org/issues/0801/0801_2a.htm – Accessed 1 March 2010 – Attachment 42

²⁰ Farha, Mark 2008, ‘Demography and Democracy in Lebanon’, *Mideast Monitor*, vol. 3: 1, January-March http://www.mideastmonitor.org/issues/0801/0801_2a.htm – Accessed 1 March 2010 – Attachment 42

²¹ US Department of State 2009, *International Religious Freedom Report for 2009 – Lebanon*, Introduction, October – Attachment 9

²² Obeid, Maurice 2009, ‘Twenty years later, little has changed’, *Ya Libnan*, 14 November http://yalibnan.com/site/archives/2009/11/twenty_years_la.php – Accessed 11 February 2010 – Attachment 11

Freedom House confirms that “informal religious discrimination is common, especially as the country’s recent political crisis had a strong sectarian element”.²³

It may be of interest that in February 2009 the Minister of Interior issued a circular removing the requirement that citizens have their religious affiliation encoded on their national identity cards or *ikhraaj qaid* documents (a civil document that can be presented instead of an identity card for various purposes, including obtaining government or university employment). Citizens are also now able to remove their religious affiliation from their civil registry records.²⁴ At the very least, this is likely to reduce some instances of low-level discrimination on the basis of religion.

3. Are there areas in Lebanon where Christians could live more safely if Assoun is a predominantly Muslim area? Can Lebanese people relocate freely?

As noted in Question 1, Assoun is located in a predominantly Sunni Muslim area, and one report from 1999 describes Assoun as a “stronghold” for Sunni militants.²⁵ No reports were found describing any further outbreaks of violence in Assoun since the confrontation between Sunni militants and Lebanese forces in late 1999. Further, maps indicate that the village is located in an area bordering a large Christian settlement.²⁶ Thus Assoun is geographically close to an area where a Christian could reside among those of the same faith.

The law in Lebanon provides for freedom of movement within the country, and reports indicate that the government generally respects this right for Lebanese citizens. Limitations are placed on the movement of Palestinian refugees.²⁷

The maps under Question 1 sourced from the *Mideast Monitor*²⁸, *Spiegel Online News*²⁹ and *Lebanon Support*³⁰ that illustrate the distribution of religious groups within Lebanon show a number of areas throughout the country where Christians predominate, and to where a Christian could potentially relocate. The concept of a “safe” place to reside in Lebanon, however, could be viewed as arbitrary given the periodic occurrence of violent incidents throughout the country – as is reported by the US Department of State, “Internal strife along confessional divides and between the government majority and the opposition continue[s] to

²³ Freedom House 2009, *Freedom in the World: Lebanon*, http://freedomhouse.org/inc/content/pubs/fiw/inc_country_detail.cfm?year=2009&country=7644&pf – Accessed 9 February 2010 – Attachment 14

²⁴ US Department of State 2009, *International Religious Freedom Report for 2009 – Lebanon*, Section II, October – Attachment 9

²⁵ Yehia, Ranwa 2000, ‘Islamists on a rampage in Lebanon’, *Al-Ahram Weekly*, Issue 464, 13-19 January <http://weekly.ahram.org.eg/2000/464/re3.htm> – Accessed 10 February 2010 – Attachment 7

²⁶ ‘Distribution of religious groups and parliamentary representation in Lebanon’ 2007, *Spiegel Online News*, 1 October <http://www.spiegel.de/international/spiegel/0,1518,457002-2,00.html> – Accessed 11 February 2010 – Attachment 12

²⁷ US Department of State 2009, *2008 Human Rights Report: Lebanon*, 25 February, section 2d – Attachment 13

²⁸ ‘Voter Registration by Sect’ in Farha, Mark 2008, ‘Demography and Democracy in Lebanon’, *Mideast Monitor*, vol. 3: 1, January-March http://www.mideastmonitor.org/issues/0801/0801_2a.htm – Accessed 1 March 2010 – Attachment 41

²⁹ ‘Distribution of religious groups and parliamentary representation in Lebanon’ 2007, *Spiegel Online News*, 1 October <http://www.spiegel.de/international/spiegel/0,1518,457002-2,00.html> – Accessed 11 February 2010 – Attachment 12

³⁰ ‘Mapping of Vulnerabilities in Lebanon (SE-1) (Deprivation Indicators, 1996)’ 2008, Lebanon Support website, June [http://www.reliefweb.int/rw/fullMaps_Sa.nsf/luFullMap/00BD785A71C24C8885257474007067B1/\\$File/ls_SE_C_Ibn080626.pdf](http://www.reliefweb.int/rw/fullMaps_Sa.nsf/luFullMap/00BD785A71C24C8885257474007067B1/$File/ls_SE_C_Ibn080626.pdf) – Accessed 10 February 2010 – Attachment 3

plague the country... and militant groups committed violence against political figures and government institutions”.³¹

It is noteworthy, however, that sectarian violence and terrorist attacks in Lebanon are more likely to be driven by inter-Muslim tensions³², Hezbollah’s conflict with Israel³³ and political divisions within the Christian population.³⁴ Thus while violence occurs episodically and Christians and Christian infrastructure are sometimes casualties, no particular group is targeting Christians specifically or exclusively.

Several articles were located that report on the growing number of Christians departing Lebanon after decades of violence and political uncertainty.³⁵ While some attribute rising Christian emigration to fears of increasing Islamisation and the strengthening of Hezbollah³⁶, “economic uncertainties” are also a contributing factor³⁷. Gregory Katz notes that “Christians also leave because they have a better chance to advance in more peaceful and affluent countries”.³⁸ Further, the desire to leave Lebanon due to violence and lack of opportunity is not exclusive to Christians, with “the exodus of young workers cross[ing] the religious spectrum”.³⁹

4. Please provide information on the availability of state protection for Christians who have acts of violence committed against them by Muslims.

Religious freedom is protected under the Lebanese constitution. A range of reports, however, indicate that religious-based harassment and discrimination is often not prevented or punished by the state.⁴⁰

³¹ See US Department of State 2009, *2008 Human Rights Report: Lebanon*, 25 February, section 2g – Attachment 13

³² International Crisis Group 2007, *Hizbollah and the Lebanese Crisis*, Middle East Report No 69, 10 October, Section IA p. 1, Section IC pp.8-10 <http://www.crisisgroup.org/home/index.cfm?id=5113&l=1> – Accessed 25 February 2010 – Attachment 37

³³ See UK Home Office 2008, *Country of Origin Information Key Documents: Lebanon*, 14 April, Section 1 p. 7 – Attachment 38

³⁴ See Rubeiz, Ghassan Michel 2008, ‘Christian politics in Lebanon’, *Mideast Monitor*, January-March – Attachment 39; and ‘Christian factions clash in north Lebanon, 2 dead’, *Reuters*, 17 September, 2008 – Attachment 40

³⁵ See, for example: Katz, Gregory 2006, ‘The Silent Exodus: Vanishing Christians of the Mideast’, *Houston Chronicle*, 24 December, <http://www.chron.com/disp/story.mpl/world/4424050.html> – Accessed 12 February 2010 – Attachment 17; Hirst, Michael 2007, ‘Rise in radical Islam last straw for Lebanon’s Christians’, *Telegraph*, 12 April – Attachment 18; Ensor Josie 2009, ‘Christians tempted to emigrate as Lebanon grows increasingly ‘Islamized’’, *The Lebanon Daily Star*, 28 September – Attachment 19; Khoury, Maroun 2009, ‘Sfeir confident about future of Lebanese Christians’, 27 April, *The Lebanon Daily Star* – Attachment 35; Fil, Rana 2007, ‘Lebanon’s Exodus’, 11 December, *Newsweek* – Attachment 36

³⁶ See, for example: Katz, Gregory 2006, ‘The Silent Exodus: Vanishing Christians of the Mideast’, *Houston Chronicle*, 24 December, <http://www.chron.com/disp/story.mpl/world/4424050.html> – Accessed 12 February 2010 – Attachment 17; Hirst, Michael 2007, ‘Rise in radical Islam last straw for Lebanon’s Christians’, *Telegraph*, 12 April – Attachment 18; Ensor Josie 2009, ‘Christians tempted to emigrate as Lebanon grows increasingly ‘Islamized’’, *The Lebanon Daily Star*, 28 September – Attachment 19

³⁷ Ensor Josie 2009, ‘Christians tempted to emigrate as Lebanon grows increasingly ‘Islamized’’, *The Lebanon Daily Star*, 28 September – Attachment 19

³⁸ Katz, Gregory 2006, ‘The Silent Exodus: Vanishing Christians of the Mideast’, *Houston Chronicle*, 24 December, <http://www.chron.com/disp/story.mpl/world/4424050.html> – Accessed 12 February 2010 – Attachment 17

³⁹ Hirst, Michael 2007, ‘Rise in radical Islam last straw for Lebanon’s Christians’, *Telegraph*, 12 April – Attachment 18

⁴⁰ US Department of State 2009, *International Religious Freedom Report for 2009 – Lebanon*, Section 2d, October – Attachment 9

Human Rights Watch notes that:

More than a year after the end of the fighting that broke out in May 2008 between the Hezbollah-led opposition and pro-government groups, killing at least 71 people in two weeks, Lebanese judicial authorities have failed to hold accountable fighters responsible for attacks against civilians.

More than three years after the end of the war between Israel and Hezbollah, neither the Israeli nor the Lebanese government has investigated the violations of the laws of war committed by the warring parties.⁴¹

This recent history of state failure to pursue prosecution of violence perpetrated by religiously-affiliated political groups or militia raises doubts about the willingness and/or capacity of the Lebanese Internal Security Forces (ISF) to provide protection for those who have acts of violence committed against them on the basis of religious affiliation. This may be largely due to problems of resourcing⁴² rather than any systematic withholding of protection. A recent Canadian Immigration and Refugee Board report on the availability of state protection for Christians in Lebanon notes instances in 2008 where the army was deployed to protect predominantly Christian neighbourhoods from sectarian violence.⁴³

The ISF were debilitated following the withdrawal of Syrian backing in 2005; however, reports from two years later indicate some recovery and rebuilding of capacity. A preliminary United Nations report from 2005 published on the Columbia International Affairs website stated that the Lebanese security services had “demonstrated serious and systematic negligence” and had “failed to provide the citizens of Lebanon with an acceptable level of security”.⁴⁴ By November 2007, however, *NOW Lebanon* reported that: “In the past two and a half years, the ISF has emerged as a robust force”, with the standing and efficacy force said to have changed from previous years when: “the ISF was systematically marginalized in favor of the Syrian-controlled army”.⁴⁵ Further, the United States has funnelled a considerable amount of funding and training into the ISF, providing \$80 million to over a four year period to strengthen capacity.⁴⁶ This is linked to the increasing incidence of armed groups targeting the ISF; according to three reports, the ISF is currently facing emerging threats from a range of militant groups⁴⁷, which in turn raises doubts about its capacity to protect its own citizens from acts of violence.

⁴¹ Human Rights Watch 2010, *World Report Lebanon 2010*, 20 January – Attachment 20

⁴² Under-resourcing of the ISF is noted in DIAC Country Information Service 2007, *Country Information Report No. 07/29 – Alawi Muslim Member of Syrian Ba’ath Party in Lebanon – CIS Request LBN889* (sourced from DFAT advice of 16 March, 16 March) – Attachment 21

⁴³ Immigration and Refugee Board of Canada (IRB) 2008, LBN102732.FE – *Lebanon: Treatment of Christians and availability of state protection for Christians; whether Hezbollah targets Christians in particular (2007-2008)*, 22 February – Attachment 8

⁴⁴ FitzGerald, Peter 2005, *Report of the Facti-Finding Mission to Lebanon inquiring into the causes, circumstances and consequences of the assassination of former Prime Minister Rafik Hariri*, 24 March, Columbia International Affairs Online (CIAO) website, <http://www.ciaonet.org/wps/cfr003/index.html> – Attachment 22

⁴⁵ Ryan, B. 2007, ‘Securing Internal Security’, *NOW Lebanon*, 12 November <http://www.nowlebanon.com/NewsArticleDetails.aspx?ID=19296> – Accessed 2 March 2010 – Attachment 44

⁴⁶ Embassy of the United States Beirut 2009, *U.S. Embassy Inaugurates Enhanced Cybercrime Unit for the Internal Security Forces*, April 15, Embassy of the United States Beirut Lebanon website http://lebanon.usembassy.gov/latest_embassy_news/09pressreleases/prisf041509.html – Accessed 16 February 2010 – Attachment 26

⁴⁷ Ajemian, Pete 2008, ‘Interpreting the Terrorist Against Lebanon’s Army in the North’, *Terrorism Monitor*, Vol 6, Issue 19, Jamestown Foundation website http://www.jamestown.org/single/?no_cache=1&tx_ttnews%5Btt_news%5D=5198 – Accessed 16 February

The situation is further exacerbated by the sectarianism that pervades all aspects of Lebanese government and society, such as in the distribution of bureaucratic employment, including within Lebanese security bodies. A recent report by the Lebanese Transparency Association, for example, notes that:

The perennial concern as regards law enforcement in Lebanon is that those in power will use it as a political tool to protect the interests of traditional elites: sectarianism, as in all parts of the political process, is imbedded into the leadership positions of security agencies. The army commander of the military has always been a Christian Maronite and often remained close to the Christian elite. The chief of the ISF is often a Sunni Muslim, usually appointed with the Prime Minister's approval (who is also a Sunni Muslim). The position of the Christian army commander, however, retains the most power on the Lebanon's political scene.⁴⁸

Further, the sectarian divisions characterising social and political interactions in Lebanon greatly increase likelihood that citizens will seek protection within their own communities, rather than from the state. Ayman El-Amir reports in the *Al-Ahram Weekly* that:

...because of its long history of sectarian violence, politicians have manipulated their constituencies into believing that their very survival depends not so much on the rule of law in an egalitarian state system as on huddling together under the protection of a sectarian umbrella defended by armed militias. In this paradigm, every Lebanese believes that sectarian protection, not the law of the land, is the best guarantee of his interests and privileges.⁴⁹

The above information indicates that the ISF is not immune to the sectarian divisions within society, potentially affecting the impartiality with which it provides protection to its citizens, and further increasing the likelihood that Lebanese citizens will seek the protection proffered by their sectarian communities rather than from state bodies⁵⁰. Question 1 of Research Response LBN33809 of 2 October 2008 provides information suggesting that violence between Christian groups is more of a problem in North Lebanon than violence between Christians and Muslims.⁵¹

5. Briefly, were 1997 to 1999 particularly violent times in Lebanon, or were those times when there were incidents of violence against Christians?

1997-1999 were relatively stable years in Lebanon compared with the violence of the 1975-1990 civil war and the early years of post-war reconstruction.⁵² Violence and conflict during these years was largely concentrated in the Israeli-occupied south of the country. At this time Lebanon, particularly its security and intelligence bodies, was largely controlled by Syria and dominated by non-Lebanese forces – including about 25,000 Syrian troops, 2,000 Israeli

2010 – Attachment 25; Saab, Bilal Y. 2008, *Al-Qa`ida's Presence and Influence in Lebanon*, Combatting Terrorism Centre (CTC) Sentinel. November, Brookings Institute website; 'Special Report: terror in Lebanon threatens national, regional security' 2008, *Middle East Times*, 17 October – Attachment 47

http://www.brookings.edu/~media/Files/rc/articles/2008/11_lebanon_saab/11_lebanon_saab.pdf – Accessed 16 February 2010 – Attachment 24

⁴⁸ Lebanese Transparency Association 2009, *National Integrity System Study: Lebanon 2009*, Transparency International and Lebanese Transparency Association, Section IX: 8, p.81 http://www.transparency-lebanon.org/publications/national_integrity_systems_en.pdf – Accessed 16 February 2010 – Attachment 27

⁴⁹ El-Amir, Ayman 2008, 'Skirting the precipice', *Al-Ahram Weekly*, Issue No. 897, 15 – 21 May, <http://weekly.ahram.org.eg/2008/897/re71.htm> – Accessed 16 February 2010 – Attachment 28

⁵⁰ See also International Crisis Group 2005, *Lebanon: Managing the gathering storm*, Middle East Report No 48, 5 December, p 6 – Attachment 45

⁵¹ RRT Research & Information 2008, *Research Response LBN33809*, 2 October – Attachment 46

⁵² For a brief overview of the civil war and its aftermath, see US Department of State 2009, *Background note: Lebanon*, January – Attachment 48

Army regulars and 1,500 Israeli-supported militiamen in the south, and several armed Palestinian factions located in camps. This systematically undermined the authority of the central Government, and made application of Lebanese law in areas under Israeli, Syrian or Palestinian control largely impossible.⁵³

The 1997, 1998 and 1999 US Department of State (USDoS) reports note that in those years the overall level of armed conflict had significantly declined in comparison to previous years; however, artillery and aerial attacks continued to threaten lives and property in the south of the country.⁵⁴

The 1998 UK Home Office Country of Origin report for Lebanon also noted that:

The level of violence in Lebanon has receded immensely since 1991, except in the Israeli “security zone”... It has been reported that the level of violence in major Lebanese cities is significantly less than in cities such as New York, Los Angeles or Chicago. Beirut has been described as considerably safer than most cities in the West. State protection has greatly increased in terms of police presence in the street during both the day and night. As a result it is reportedly safe to go out at all hours of the night.⁵⁵

While reports indicate that outside of the Israeli-controlled ‘security zone’ violence had significantly decreased, it may be of note that the 1998 UK Home Office Report also states that *Hezbollah* controlled most of the areas north of the ‘security zone’, with human rights abuses including beatings, abductions and summary executions associated with the group.⁵⁶

List of Attachments

1. ‘Assoun, Ash Shamal’ 2004, Traveljournals.net website, 27 February
<http://www.traveljournals.net/explore/lebanon/map/m1158979/assoun.html> – Accessed 10 February 2010.
2. ‘Map of Lebanon showing regions’ (undated), Ministry of Tourism: Destination Lebanon website <http://www.destinationlebanon.gov.lb/About/Map.aspx> – Accessed 10 February 2010.
3. ‘Mapping of Vulnerabilities in Lebanon (SE-1) (Deprivation Indicators, 1996)’ 2008, Lebanon Support website, June
[http://www.reliefweb.int/rw/fullMaps_Sa.nsf/luFullMap/00BD785A71C24C8885257474007067B1/\\$File/ls_SEC_lbn080626.pdf](http://www.reliefweb.int/rw/fullMaps_Sa.nsf/luFullMap/00BD785A71C24C8885257474007067B1/$File/ls_SEC_lbn080626.pdf) - Accessed 10 February 2010.
4. Gambill, Gary C. 2000, ‘Syrian, Lebanese Security Forces Crush Sunni Islamist Opposition’, *Middle East Intelligence Bulletin*, January. (CISNET Lebanon CX41735)
5. UK Home Office 2006, *Country of Origin Information Report – The Lebanon*, July, pp.100-101.
6. ‘Municipalities of Lebanon’ 2010, Wikipedia, last updated 16 January –
http://en.wikipedia.org/wiki/Municipalities_of_Lebanon – Accessed 10 February 2010.

⁵³ US Department of State 2000, *1999 Country Reports on Human Rights Practices: Lebanon*, 25 February – Attachment 30

⁵⁴ US Department of State 1998, *1997 Country Reports on Human Rights Practices: Lebanon*, 30 January – Attachment 31; US Department of State 1999, *1998 Country Reports on Human Rights Practices: Lebanon*, 26 February – Attachment 32; US Department of State 2000, *1999 Country Reports on Human Rights Practices: Lebanon*, 25 February – Attachment 30;

⁵⁵ UK Home Office 1998, *Lebanon: Country Assessment*, November – Attachment 33

⁵⁶ UK Home Office 1998, *Lebanon: Country Assessment*, November – Attachment 33

7. Yehia, Ranwa 2000, 'Islamists on a rampage in Lebanon', *Al-Ahram Weekly*, Issue 464, 13-19 January <http://weekly.ahram.org.eg/2000/464/re3.htm> – Accessed 10 February 2010.
8. Immigration and Refugee Board of Canada (IRB) 2008, LBN102732.FE – *Lebanon: Treatment of Christians and availability of state protection for Christians; whether Hezbollah targets Christians in particular (2007-2008)*, 22 February. (REFINFO)
9. US Department of State 2009, *International Religious Freedom Report for 2009 – Lebanon*, October.
10. Ciezadlo, Annia 2005, 'Lebanon's Election: Free but Not Fair', *Washington Post*, 22 May <http://www.washingtonpost.com/wp-dyn/content/article/2005/05/20/AR2005052001868.html> – Accessed 11 February 2010.
11. Obeid, Maurice 2009, 'Twenty years later, little has changed', *Ya Libnan*, 14 November http://yalibnan.com/site/archives/2009/11/twenty_years_la.php – Accessed 11 February 2010.
12. 'Distribution of religious groups and parliamentary representation in Lebanon' 2007, *Spiegel Online News*, 1 October <http://www.spiegel.de/international/spiegel/0,1518,457002-2,00.html> – Accessed 11 February 2010.
13. US Department of State 2009, *2008 Human Rights Report: Lebanon*, 25 February.
14. Freedom House 2009, *Freedom in the World: Lebanon*, http://freedomhouse.org/inc/content/pubs/fiw/inc_country_detail.cfm?year=2009&country=7644&pf – Accessed 9 February 2010.
15. Malik, Habib C. 2009, *Outcomes and implications*, Bitter Lemons International Middle East Roundtable, Edition 22 Vol 7: Elections in Lebanon, June 11, bitterlemons-international.org website <http://www.bitterlemons-international.org/previous.php?opt=1&id=276#> – Accessed 9 February 2010.
16. Rubeiz, Ghassan Michel 2008, 'Christian politics in Lebanon', *Mideast Monitor*, January-March. (CISNET Lebanon CX224955)
17. Katz, Gregory 2006, 'The Silent Exodus: Vanishing Christians of the Mideast', *Houston Chronicle*, 24 December, <http://www.chron.com/disp/story.mpl/world/4424050.html> – Accessed 12 February 2010.
18. Hirst, Michael 2007, 'Rise in radical Islam last straw for Lebanon's Christians', *Telegraph*, 12 April. (CISNET Lebanon CX224886)
19. Ensor Josie 2009, 'Christians tempted to emigrate as Lebanon grows increasingly 'Islamized'', *The Lebanon Daily Star*, 28 September http://www.dailystar.com.lb/article.asp?edition_id=1&categ_id=1&article_id=106885. (CISNET Lebanon CX234256)
20. Human Rights Watch 2010, *World Report Lebanon 2010*, 20 January. (CISNET Lebanon CX238876)
21. DIAC Country Information Service 2007, *Country Information Report No. 07/29 – Alawi Muslim Member of Syrian Ba'ath Party in Lebanon – CIS Request LBN889* (sourced from DFAT advice of 16 March), 16 March. (CISNET Lebanon CX173871)
22. FitzGerald, Peter 2005, *Report of the Facti-Finding Mission to Lebanon inquiring into the causes, circumstances and consequences of the assassination of former Prime Minister Rafik Hariri*, 24 March, Columbia International Affairs Online (CIAO) website, <http://www.ciaonet.org/wps/cfr003/index.html>.
23. RRT Country Research 2007, *Research Response LBN31663*, 3 May.
24. Saab, Bilal Y. 2008, *Al-Qa`ida's Presence and Influence in Lebanon*, Combatting Terrorism Centre (CTC) Sentinel. November, Brookings Institute website http://www.brookings.edu/~media/Files/rc/articles/2008/11_lebanon_saab/11_lebanon_saab.pdf – Accessed 16 February 2010.

25. Ajemian, Pete 2008, 'Interpreting the Terrorist Threat Against Lebanon's Army in the North', *Terrorism Monitor*, Vol 6, Issue 19, Jamestown Foundation website http://www.jamestown.org/single/?no_cache=1&tx_ttnews%5Btt_news%5D=5198 – Accessed 16 February 2010.
26. Embassy of the United States Beirut 2009, *U.S. Embassy Inaugurates Enhanced Cybercrime Unit for the Internal Security Forces*, April 15, Embassy of the United States Beirut, Lebanon website http://lebanon.usembassy.gov/latest_embassy_news/09pressreleases/prisf041509.html – Accessed 16 February 2010.
27. Lebanese Transparency Association 2009, *National Integrity System Study: Lebanon 2009*, Transparency International and Lebanese Transparency Association, http://www.transparency-lebanon.org/publications/national_integrity_systems_en.pdf – Accessed 16 February 2010.
28. El-Amir, Ayman 2008, 'Skirting the precipice', *Al-Ahram Weekly*, Issue No. 897, 15 – 21 May, <http://weekly.ahram.org.eg/2008/897/re71.htm> – Accessed 16 February 2010.
29. 'Map of Lebanon showing regions' (undated), Ministry of Tourism: Destination Lebanon website <http://www.destinationlebanon.gov.lb/About/Map.aspx> – Accessed 10 February 2010.
30. US Department of State 2000, *1999 Country Reports on Human Rights Practices: Lebanon*, 25 February.
31. US Department of State 1998, *1997 Country Reports on Human Rights Practices: Lebanon*, 30 January.
32. US Department of State 1999, *1998 Country Reports on Human Rights Practices: Lebanon*, 26 February.
33. UK Home Office 1998, *Lebanon: Country Assessment*, November.
34. International Foundation for Electoral Systems 2009, 'Lebanon's 2009 Parliamentary Elections – The Lebanese Electoral System', IFES website, March http://www.ifes.org/publication/56c0cdaa64aa2cad85b3f5996e37cb4c/IFES_Lebanon_ES_B_Paper030209.pdf – Accessed 23 February 2010.
35. Khoury, Maroun 2009, 'Sfeir confident about future of Lebanese Christians', *The Lebanon Daily Star*, 27 April. (CISNET Lebanon CX225160)
36. Fil, Rana 2007, 'Lebanon's Exodus', *Newsweek*, 11 December. (CISNET Lebanon CX224963)
37. International Crisis Group 2007, *Hizbollah and the Lebanese Crisis*, Middle East Report No 69, 10 October <http://www.crisisgroup.org/home/index.cfm?id=5113&l=1> – Accessed 25 February 2010.
38. UK Home Office 2008, *Country of Origin Information Key Documents: Lebanon*, 14 April.
39. Rubeiz, Ghassan Michel 2008, 'Christian politics in Lebanon', *Mideast Monitor*, January-March. (CISNET Lebanon: CX224955)
40. 'Christian factions clash in north Lebanon, 2 dead', *Reuters*, 17 September, 2008. (CISNET Lebanon CX220363)
41. 'Voter Registration by Sect' in Farha, Mark 2008, 'Demography and Democracy in Lebanon', *Mideast Monitor*, vol. 3: 1, January-March http://www.mideastmonitor.org/issues/0801/0801_2a.htm – Accessed 1 March 2010.
42. Farha, Mark 2008, 'Demography and Democracy in Lebanon', *Mideast Monitor*, vol. 3, no. 1, January-March http://www.mideastmonitor.org/issues/0801/0801_2.htm – Accessed 1 March 2010.
43. CIA World Factbook 2010, *The World Factbook: Lebanon*, February 16, <https://www.cia.gov/library/publications/the-world-factbook/geos/le.html> – Accessed 2 March 2010.

44. Ryan, B. 2007, 'Securing Internal Security', *NOW Lebanon*, 12 November
<http://www.nowlebanon.com/NewsArticleDetails.aspx?ID=19296> – Accessed 2 March 2010.
45. International Crisis Group 2005, *Lebanon: Managing the gathering storm*, Middle East Report No 48, 5 December.
46. RRT Research & Information 2008, *Research Response LBN33809*, 2 October.
47. 'Special Report: terror in Lebanon threatens national, regional security' 2008, *Middle East Times*, 17 October. (CISNET Lebanon: CX212643)
48. US Department of State 2009, *Background note: Lebanon*, January. (CISNET Lebanon: CX224649)