

Sudanese return from neighbouring countries

as of 15 Jun 2026

4.5 M
Sudanese refugees in neighbouring countries

1.08 M
Sudanese return from abroad since 2024

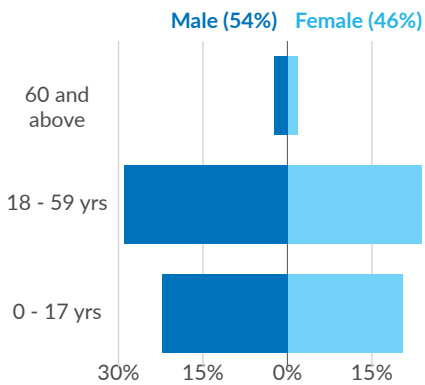
Country	Cross border movement	Primary asylum Country	Returns	Pendular movements	Onward movements
Egypt*	706K	629K	98%	1.3%	0.6%
South Sudan*	221K	221K	84%	7%	9%
Chad*	82K	82K	60%	25%	15%
GCC*	61K	61K		Unknown	
Uganda*	9.5K	9.5K		Unknown	
Libya*	3.7K	81.4K		Unknown	
Ethiopia*	1.3K	1.3K	56%	30%	14%

Returns: Estimated number of people who are not planning to move onwards to another country.

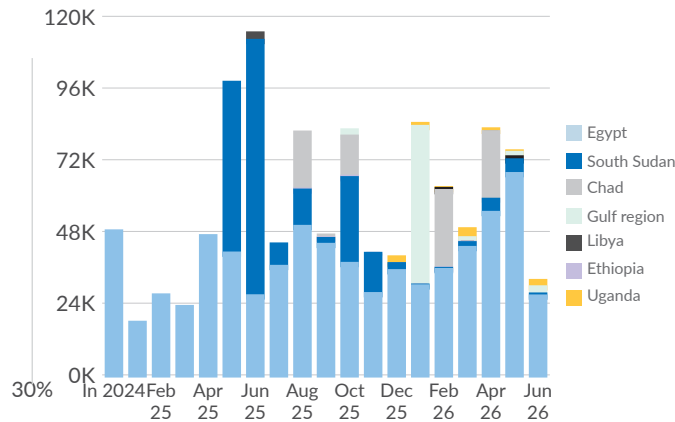
Pendular movements: Estimated number of people who are planning to return to the country they arrived from.

Onward movements: Estimated number of people who are planning to move to another country (other than the one they arrived from).

Age and gender

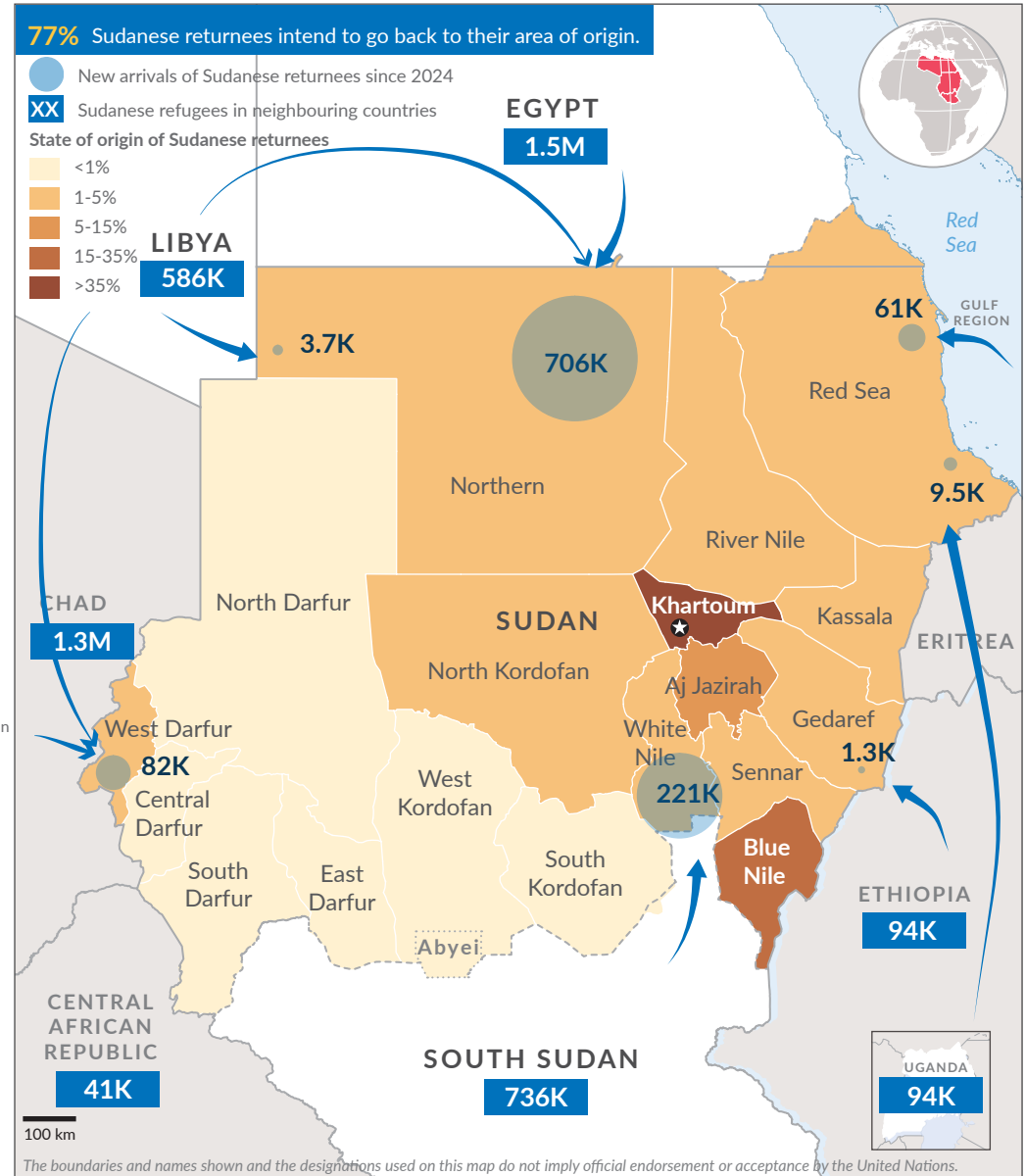


Return trend



* Data source

- Egypt: Border Authorities, UNHCR Border Monitoring, IOM DTM Return overview and cross-border monitoring reports.
- South Sudan: COR (Commissioner for Refugees), UNHCR Border Monitoring, IOM DTM Return overview and cross-border monitoring reports.
- Chad: IOM DTM Return overview and cross-border monitoring reports.
- Gulf Cooperation Council (GCC): IOM DTM Return overview and cross-border monitoring reports.
- Libya: UNHCR, IOM DTM Return overview and cross-border monitoring reports.
- Ethiopia: IOM DTM Return overview and cross-border monitoring reports.
- Uganda: UNHCR Red Sea Return movement tracking, IOM DTM Return overview.



Findings are based on sample border monitoring in Sudan which has been in place since July 2024. This monitoring does not identify registration status, refugee status, or other movement categories and therefore results should be read as indicative of the concerns raised by people returning to Sudan.

49%
had applied for asylum
in departing countries

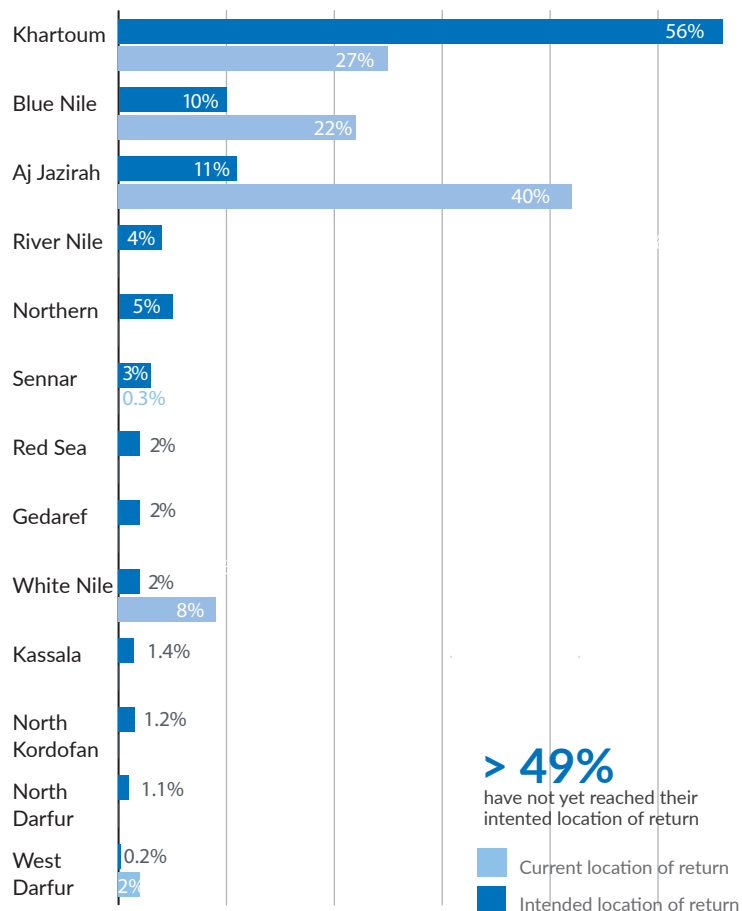
42%
reported protection risks
in departing countries

41%
reported long processing
times at the border

17%
reported family members
were left behind

34%
participated in economic
activities prior to
displacement

Intended state of return vs current location



Assistance and protection priorities by intended state of return

n = 4,721

	Khartoum	Aj Jazirah	Blue Nile	Northern	River Nile	Sennar	Red Sea	Gedaref	White Nile	Other State
Priority assistance needs	2,656	509	484	240	196	125	99	84	79	249
Financial	94%	93%	61%	85%	91%	96%	88%	88%	93%	96%
Food	67%	71%	85%	76%	72%	71%	77%	80%	73%	69%
Health	45%	52%	65%	39%	54%	59%	40%	46%	44%	55%
Water	37%	48%	60%	29%	41%	52%	37%	50%	44%	55%
Sanitation	23%	31%	43%	15%	32%	30%	21%	32%	38%	39%
NFI	27%	29%	47%	13%	21%	36%	21%	26%	28%	33%
Shelter	29%	34%	59%	22%	30%	40%	21%	20%	27%	39%
MHPSS	21%	25%	16%	13%	30%	32%	23%	24%	31%	36%
Connectivity	14%	22%	8%	10%	17%	21%	16%	20%	20%	16%
Protection priorities										
Girls and women	19%	24%	34%	10%	22%	26%	19%	20%	20%	27%
Children	11%	17%	36%	7%	18%	12%	12%	14%	22%	15%
Elderly	10%	15%	18%	8%	19%	11%	5%	16%	11%	13%
Family reunification	11%	16%	16%	7%	5%	10%	7%	8%	16%	27%
Documentation	6%	9%	40%	5%	7%	11%	7%	10%	13%	9%
Legal assistance	7%	9%	16%	10%	13%	8%	14%	22%	18%	14%
Persons with disabilities	6%	10%	16%	5%	13%	10%	2%	10%	4%	11%
Access to asylum	10%	9%	11%	5%	6%	15%	9%	6%	13%	13%
Information	3%	7%	11%	3%	1%	8%	7%	6%	9%	6%