



CHAD: FORCIBLY DISPLACED PERSONS



May 2026

KEY FIGURES ON FORCIBLY DISPLACED PERSONS

2, 253, 388

Total

1, 531, 851

Refugees

9, 398

Asylum seekers

219, 595

Internally displaced persons (Lake)

492, 544*

Returned migrants

Others keys figures

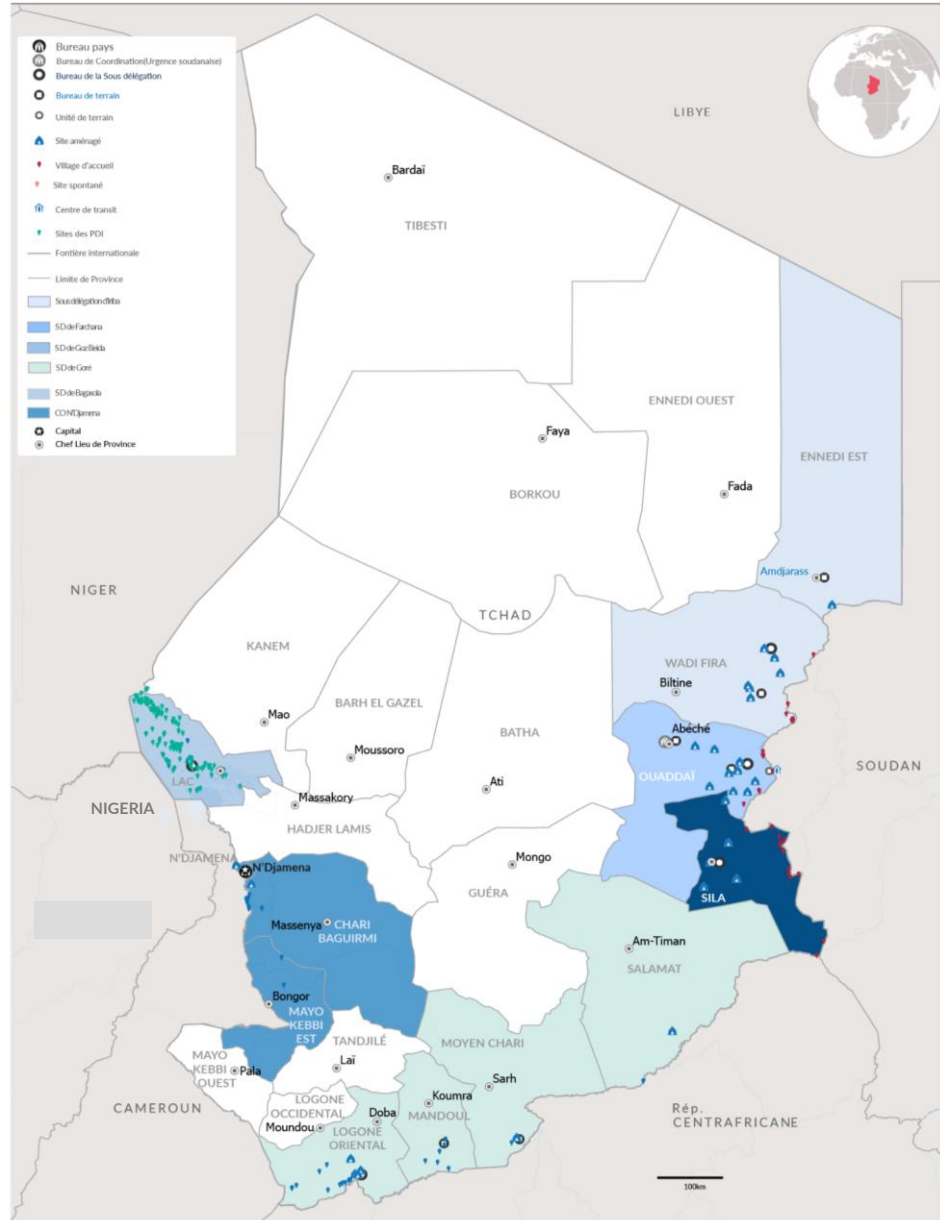
18, 887

Cameroonian refugees assisted for voluntary repatriation

928, 818

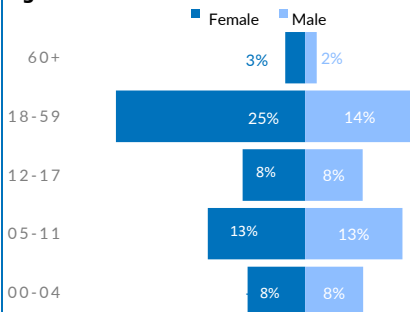
New arrivals from Sudan since April 2023

* Returned migrants at risk of statelessness from: Niger, CAR, and Sudan.

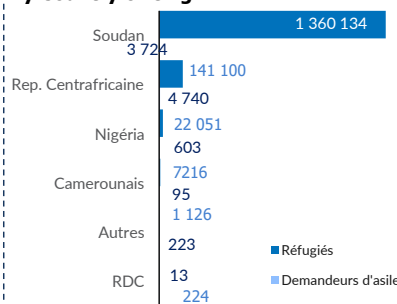


REFUGEES AND ASYLUM SEEKERS

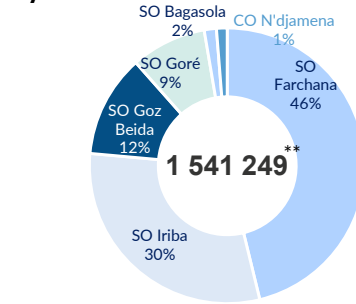
Age Cohort



By Country of Origin

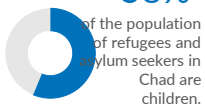


By Sub Office



** Population réfugié et demandeurs d'asile

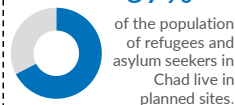
58%



54%



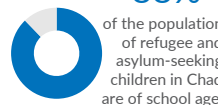
67%



20%



88%



1,211

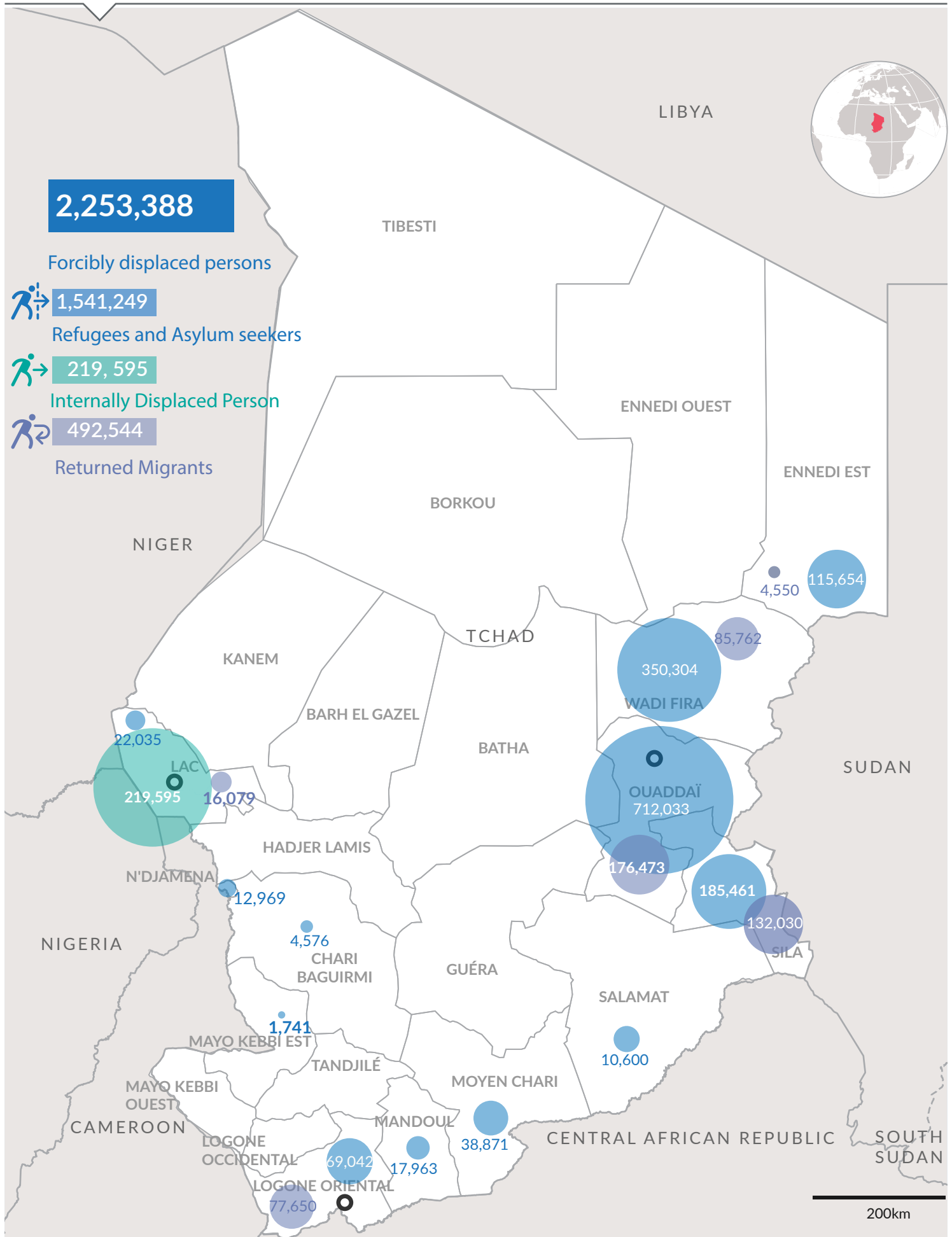


Students receive scholarships, including 278 through the DAFI programme and 655 thanks to CBI support.



CHAD: FORCIBLY DISPLACED PERSONS

31 may 2026



The boundaries and names shown and the designations used on this map do not imply official endorsement or acceptance by the United Nations.



CHAD: REFUGEES AND ASYLUM SEEKERS

May 2026

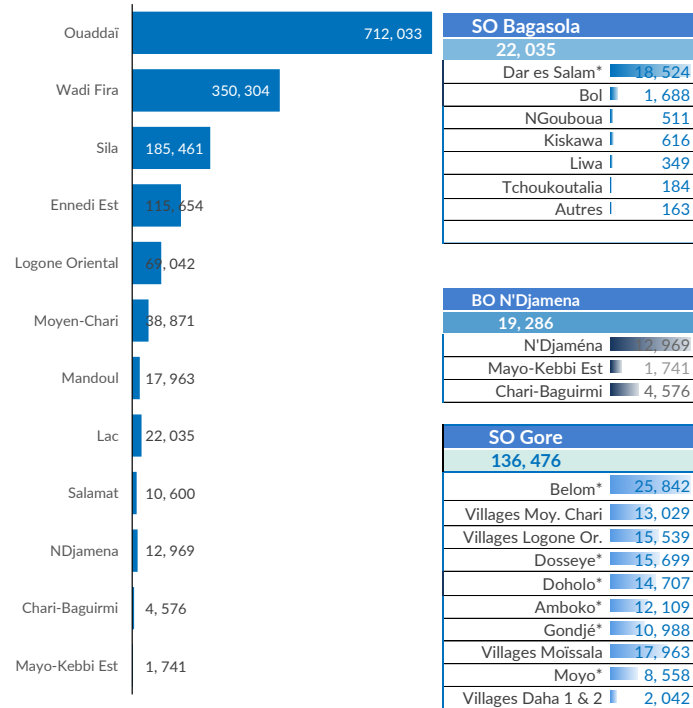


1, 541, 249
INDIVIDUALS



377, 987
HOUSEHOLDS

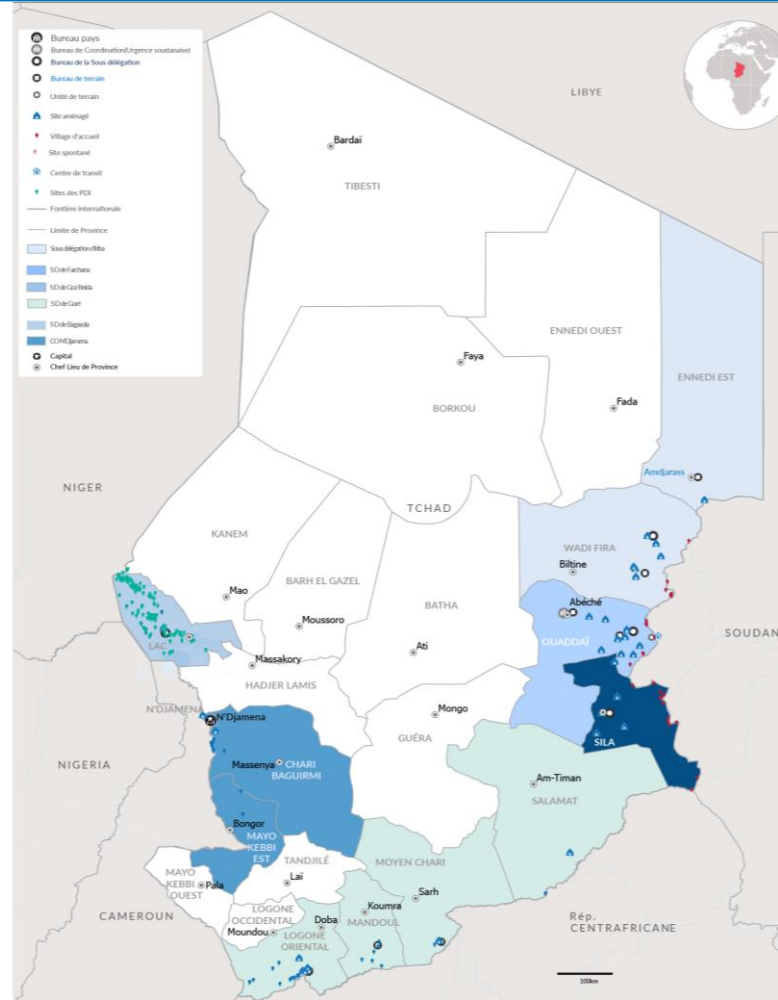
By Province



SO Bagasola	
22,035	
Dar es Salam* 18,524	
Bol 1,688	
NGouboua 511	
Kiskawa 616	
Liwa 349	
Tchoukoutalia 184	
Autres 163	

BO N'Djamena	
19,286	
N'Djaména 17,969	
Mayo-Kebbi Est 1,741	
Chari-Baguirmi 4,576	

SO Gore	
136,476	
Belom* 25,842	
Villages Moy. Chari 13,029	
Villages Logone Or. 15,539	
Dosseye* 15,699	
Doholo* 14,707	
Amboko* 12,109	
Gondjé* 10,988	
Villages Moïssala 17,963	
Moyo* 8,558	
Villages Daha 1 & 2 2,042	



Abeche Coordination Office

1, 363, 452

SO Iriba	
465,958	
Touloum* 68,399	
Am Nabak* 33,807	
Iridimi* 42,088	
Goudrane 49,762	
Frontières 10,413	

FO Amdjarass	
115,654	
Oure Cassoni* 115,654	
FO Guéréda	
145,835	
Mile* 62,342	
Kounoungou* 28,923	
Koursigue* 13,131	
Marasabre 35,297	
Maiba 179	
Birak 2,761	
Koulbous 3,202	

SO Farchana	
712,033	
Farchana* 57,803	
Aboutengué* 48,880	
Metche* 43,349	
Gaga* 41,636	
Adre 229,125	
Border(Ouaddaï) 26,934	

FO Abeche	
39,409	
Kouchaguine- M.* 29,945	
Abéché et Abougoudam 9,464	

FO Hadjer Hadid	
224,897	
Bredjing* 57,778	
Alacha* 53,111	
Treguine* 31,810	
Arkoum* 61,375	
Dougui* 20,823	

Principales nationalités(Ref. & ASY)

1, 363, 858 **145, 840** **22, 654** **7, 311** **1, 586**

SUDANESE **CENTRAL AFRICANS** **NIGERIANS** **CAMEROONIANS** **OTHER NATIONALITIES**

Essentially located in the 21 planned sites and 1 reception village in the East and in urban areas.

Located in the six camps, sites, and host villages in the South and in urban areas.

Primarily located in the Dar Es Salam camp and host villages in the Lake Province as well as in urban areas.

Mainly composed of populations who fled intercommunal clashes in the Logone and Chari department in Cameroon. They are located in the two camps around N'Djamena and on the banks of the Logone River.

Outside the major nationalities, there are individuals of various origins: Algeria, Benin, Burkina Faso, Burundi, Côte d'Ivoire, Republic of the Congo, Egypt, Eritrea, Ethiopia, Gabon, Libya, Mali, Islamic Republic of Iran, Rwanda, Senegal, Somalia, South Sudan, Palestine, Yemen.

KEY FIGURES ON THE SUDANESE CRISIS

928, 818 **409, 819**

New arrivals from Sudan 2023.

Sudanese refugees in Chad before the 2023 crisis.

FO Goz Beida	
185,461	
Goz Amir* 47,390	
Zabout* 56,197	
Djabal* 38,881	
Kerfi 11,910	
Border(Sila) 31,083	

* Planned site