

2,226,889 TOTAL FORCIBLY DISPLCED PERSONS

282,392 CENTRAL AFRICAN REFUGEES

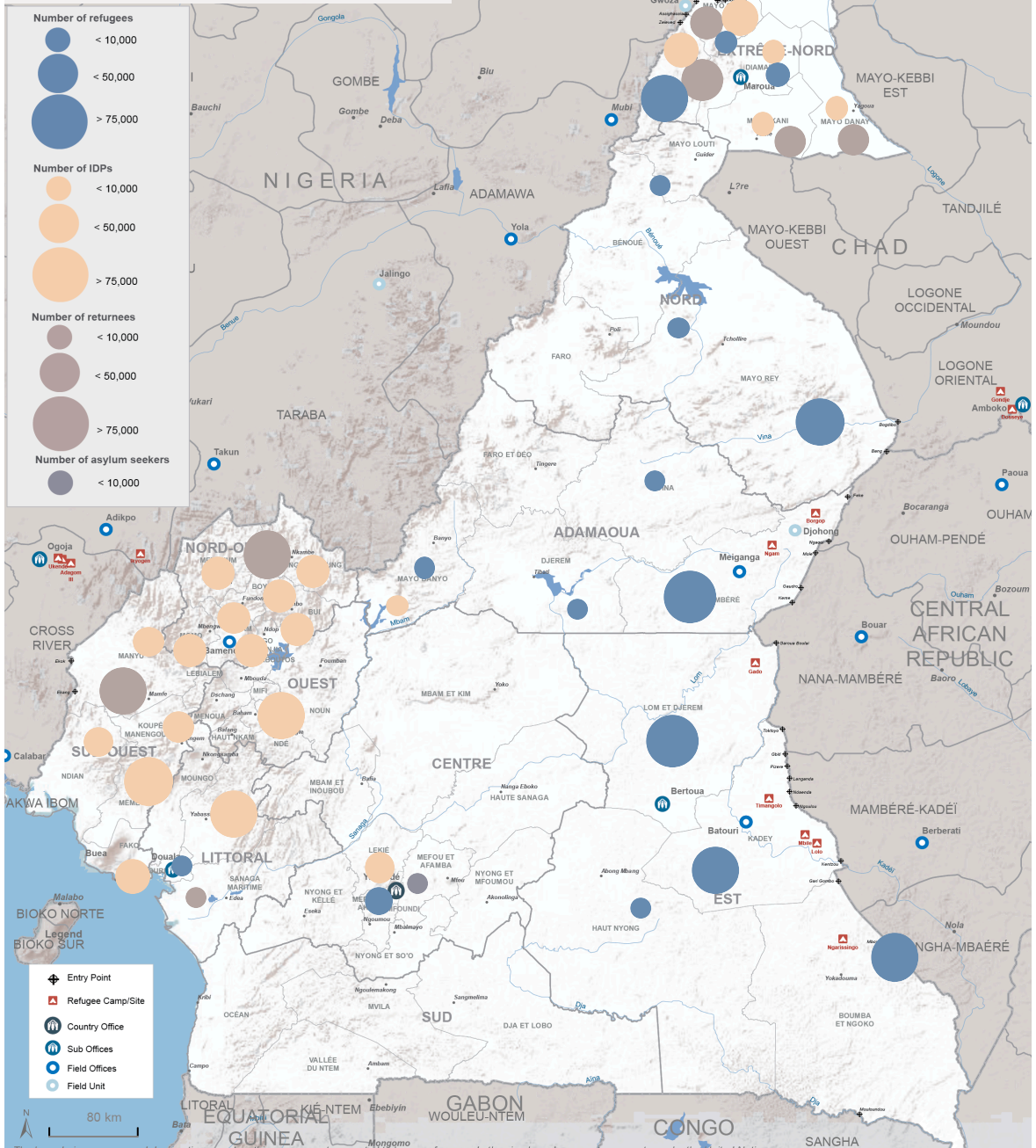
125,192 NIGERIAN PERSONS

3,706 REFUGEES OTHERS NATIONALITIES

20,500 ASYLUM SEEKERS

1,004,257 INTERNALLY DISPLCED PERSONS (IDPs)

790,842 RETURNEES IDPs



The boundaries, names, and designations used on this map are not warranted to be error free nor do they imply endorsement or acceptance by the United Nations.

Returnees & IDPs: Source: IOM, OCHA
 Refugees & Asylum Seekers: Source: UNHCR

for more information, please contact Claudric DE KALAMBAK (nguenade@unhcr.org)