

# KEY HIGHLIGHTS AT A GLANCE

A total of 510,788 internal displacements were recorded in Q1 2026, representing an increase of over 400,000 individuals compared to Q1 2025.

Displacement during Q1 2026 was increasingly driven by climate-related shocks, with drought emerging as the primary driver, accounting for 475,177 displacements. This confirms a worsening trend already observed in Q4 2025, when 304,987 drought-related displacements were recorded, further exacerbating protection risks among already vulnerable populations.

Women and children account for 85% of the displaced population and remain the groups most exposed to protection risks and rights violations.

17% of all displaced individuals were recorded in the 21 HNRP-prioritized districts, with Jowhar (69,543) and Qansax Dheere (6,738) reporting the highest numbers of displacements.



**TOTAL INTERNAL DISPLACEMENTS**

↑ **+400,000 displacements**  
compared to Q1 2025



**DISPLACEMENTS IN HNRP\* PRIORITISED DISTRICTS**

HNRP-prioritized districts accounted for 17% of total displacements recorded in Q1 2026



**ALERTS PUBLISHED**

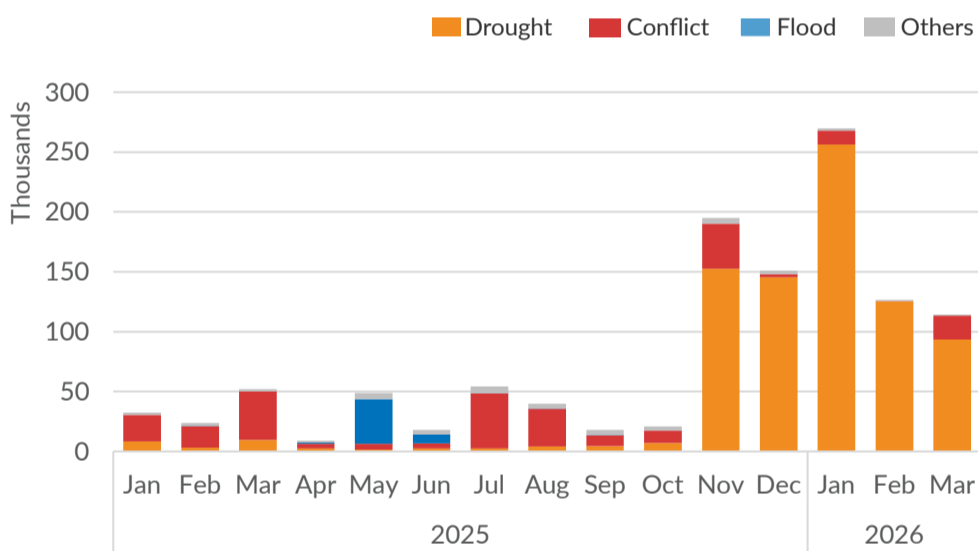
informing partners of urgent protection needs and risks



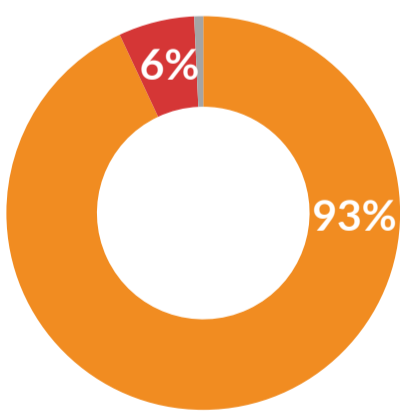
**WOMEN AND CHILDREN**

representing the majority of displaced people

## DISPLACEMENT TRENDS AND REASONS



## DISPLACEMENT DRIVERS IN Q1 2026



**DROUGHT**  
475,177 people

**CONFLICT**  
31,844 people

**FLOOD**  
No displacement

**OTHER REASONS**  
3,767 people

## PROTECTION VIOLATIONS

**VIOLATIONS AGAINST WOMEN AND GIRLS**  
56%

**CHILD PROTECTION VIOLATIONS**  
23%

**INDISCRIMINATE VIOLENCE**  
21%

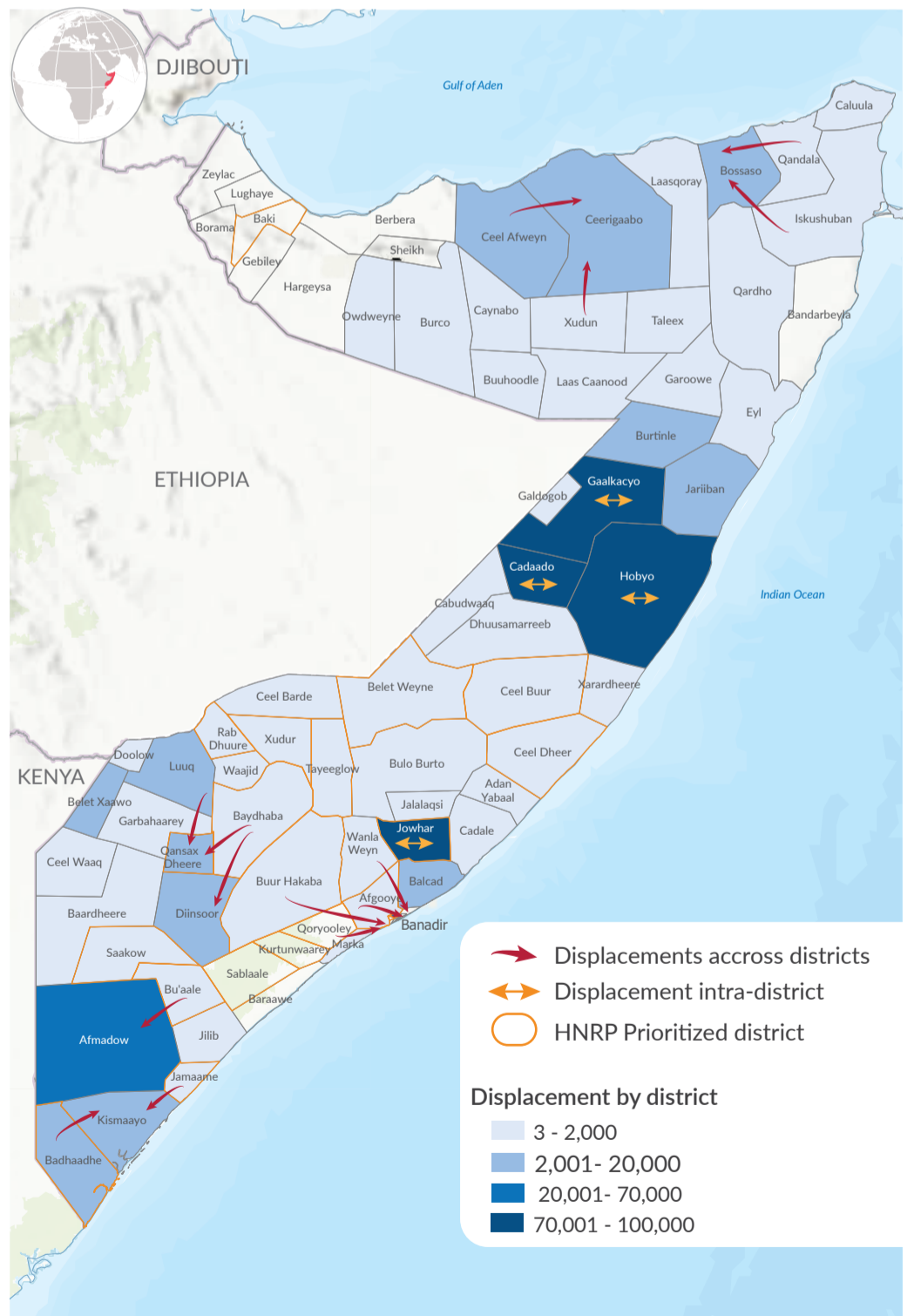
## MAIN PROTECTION RISKS IDENTIFIED

○ DISCRIMINATION AND STIGMATIZATION

○ GENDER-BASED VIOLENCE

○ PSYCHOLOGICAL EMOTIONAL ABUSE

## SITUATION MAP



The boundaries and names shown and the designations used on this map do not imply official endorsement or acceptance by the United Nations



\*HNRP: Humanitarian Needs and Response Plan

Source: PSMN (UNHCR, NRC and partner) | For more information: SOMMOPMN@UNHCR.ORG