

Refugee and Asylum-Seekers

32,253

Total Refugees and Asylum-seekers
13,362 refugees | 18,891 asylum-seekers

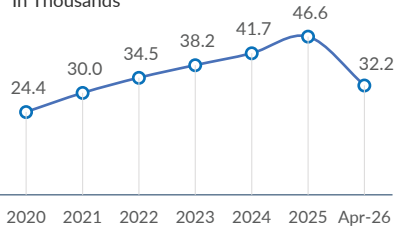
11,131

Households
Average family size: 3

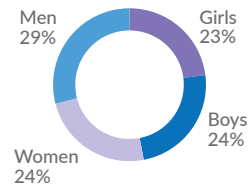
710

Persons with disability

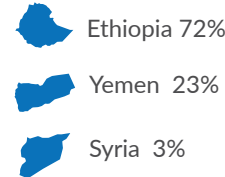
Total refugee population trend In Thousands



Age and gender breakdown



Main country of origin

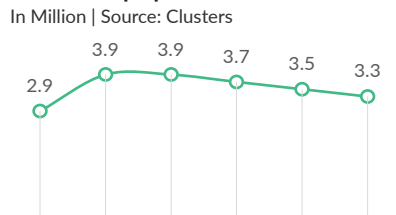


Internally Displaced People (IDPs)

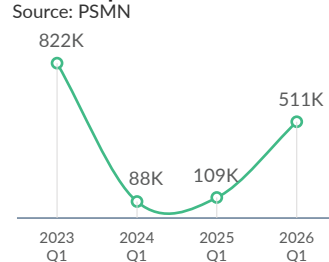
3,347,408

Total IDPs

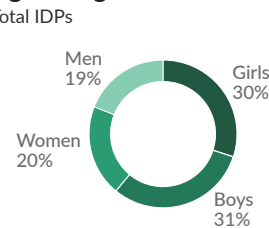
Total IDP population trend In Million | Source: Clusters



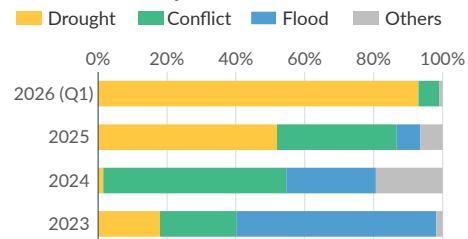
New displacement trend Source: PSMN



Age and gender breakdown Total IDPs

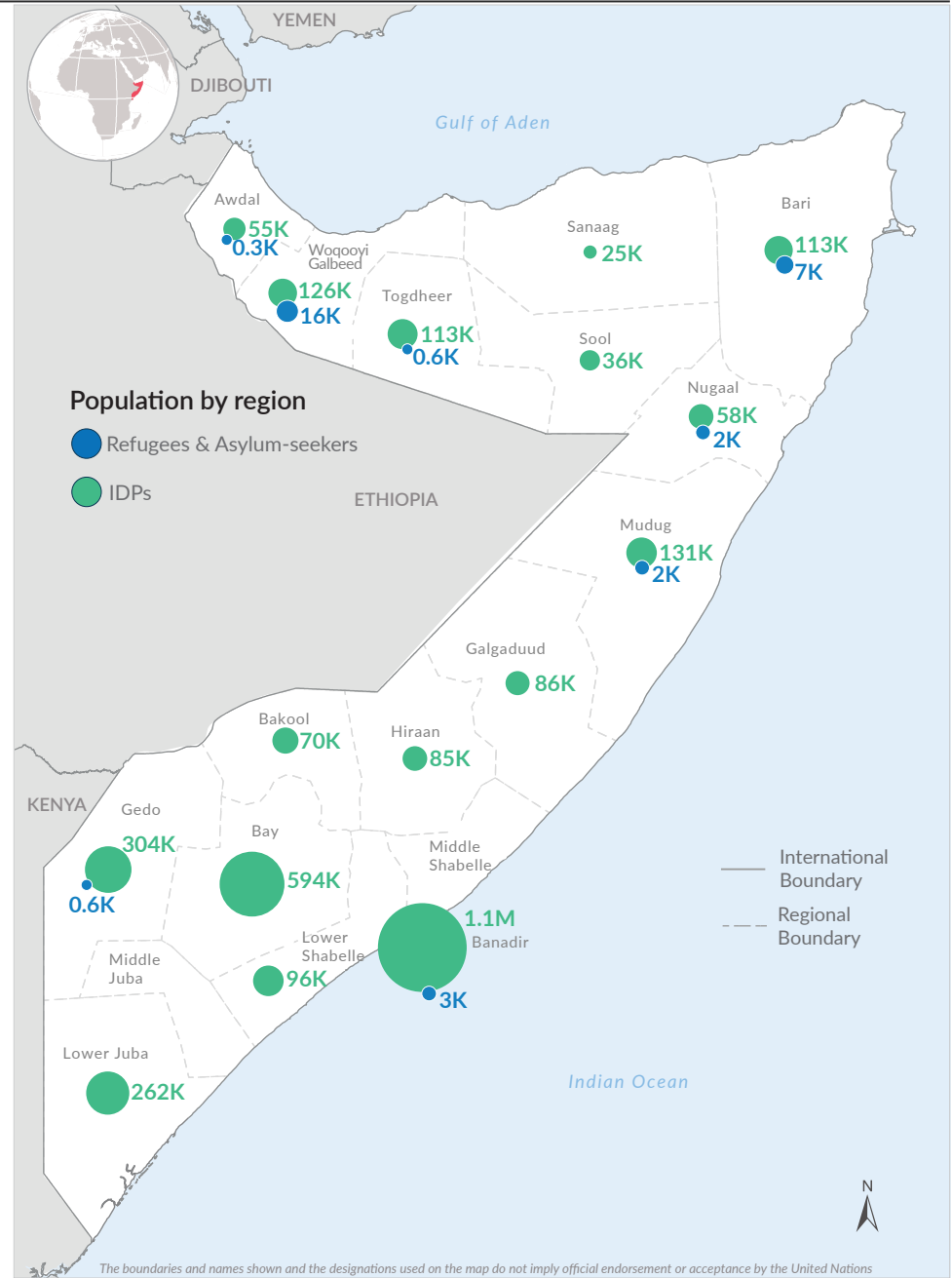


Reasons of displacement



Since 2023, the primary drivers of displacement have shifted significantly. While flooding was the leading cause in 2023 (58%), it was overtaken by conflict in 2024 (53%).

By 2025, however, climate factors returned to the forefront as drought became the dominant driver, accounting for 52% of displacements. This trend has intensified sharply in the new year; in the first quarter of 2026 alone, drought has been responsible for a staggering 92% of all displacements.



The boundaries and names shown and the designations used on the map do not imply official endorsement or acceptance by the United Nations

