

**2,224,546** TOTAL FORCIBLY DISPLCED PERSONS

**281,300** CENTRAL AFRICAN REFUGEES

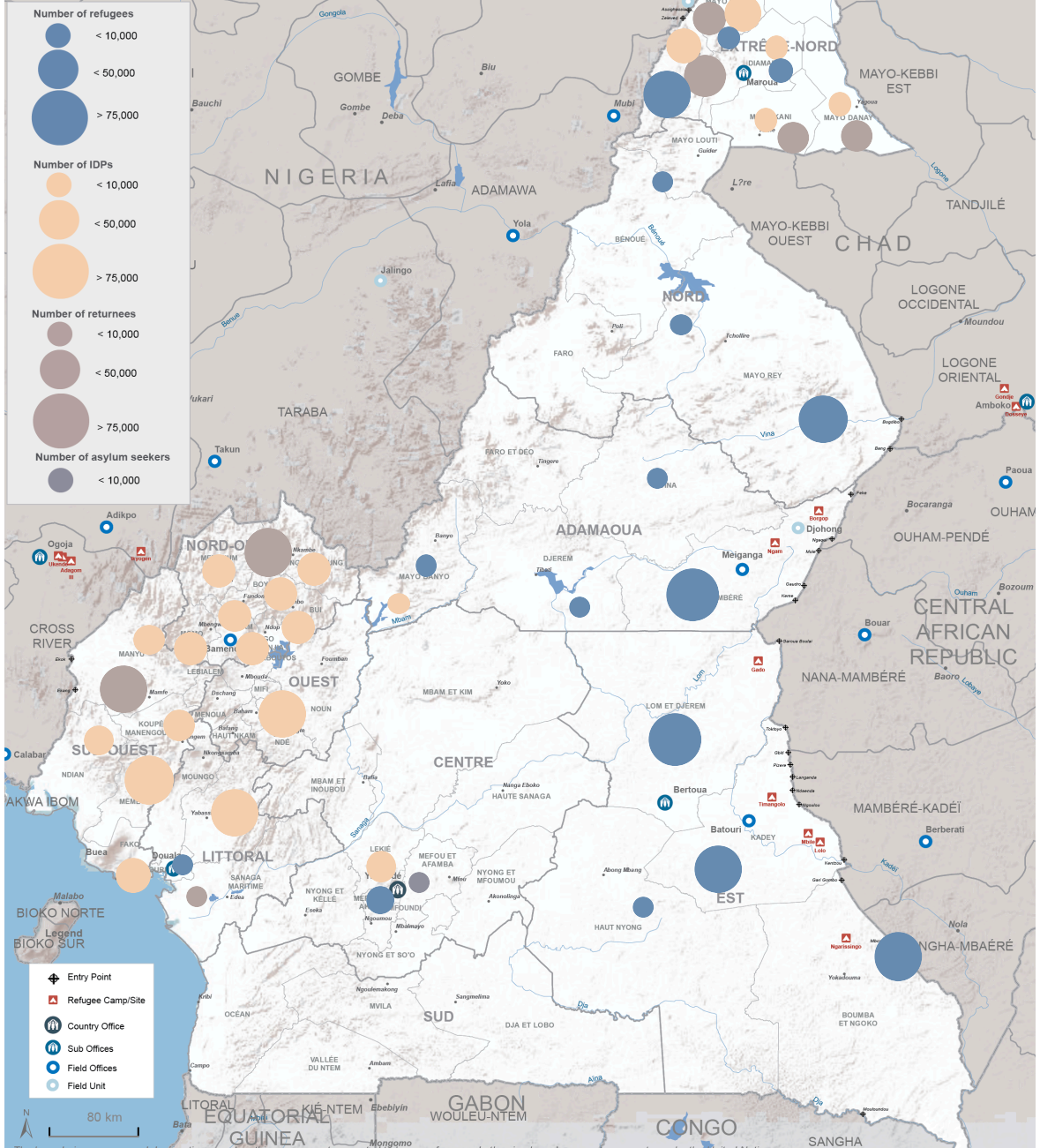
**124,382** NIGERIAN PERSONS

**3,697** REFUGEES OTHERS NATIONALITIES

**20,068** ASYLUM SEEKERS

**1,004,257** INTERNALLY DISPLCED PERSONS (IDPs)

**790,842** RETURNEES IDPs



The boundaries, names, and designations used on this map are not warranted to be error free nor do they imply endorsement or acceptance by the United Nations.

Returnees & IDPs: Source: IOM, OCHA  
 Refugees & Asylum Seekers: Source: UNHCR

for more information, please contact Claudric DE KALAMBAK (nguenade@unhcr.org)