



CHAD: FORCIBLY DISPLACED PERSONS



March 2025

KEY FIGURES ON FORCIBLY DISPLACED PERSONS

2, 232, 726

Total

1, 520, 311

Refugees

9, 336

Asylum seekers

219, 595

Internally displaced persons (Lake)

483, 484*

Returned migrants

Others keys figures

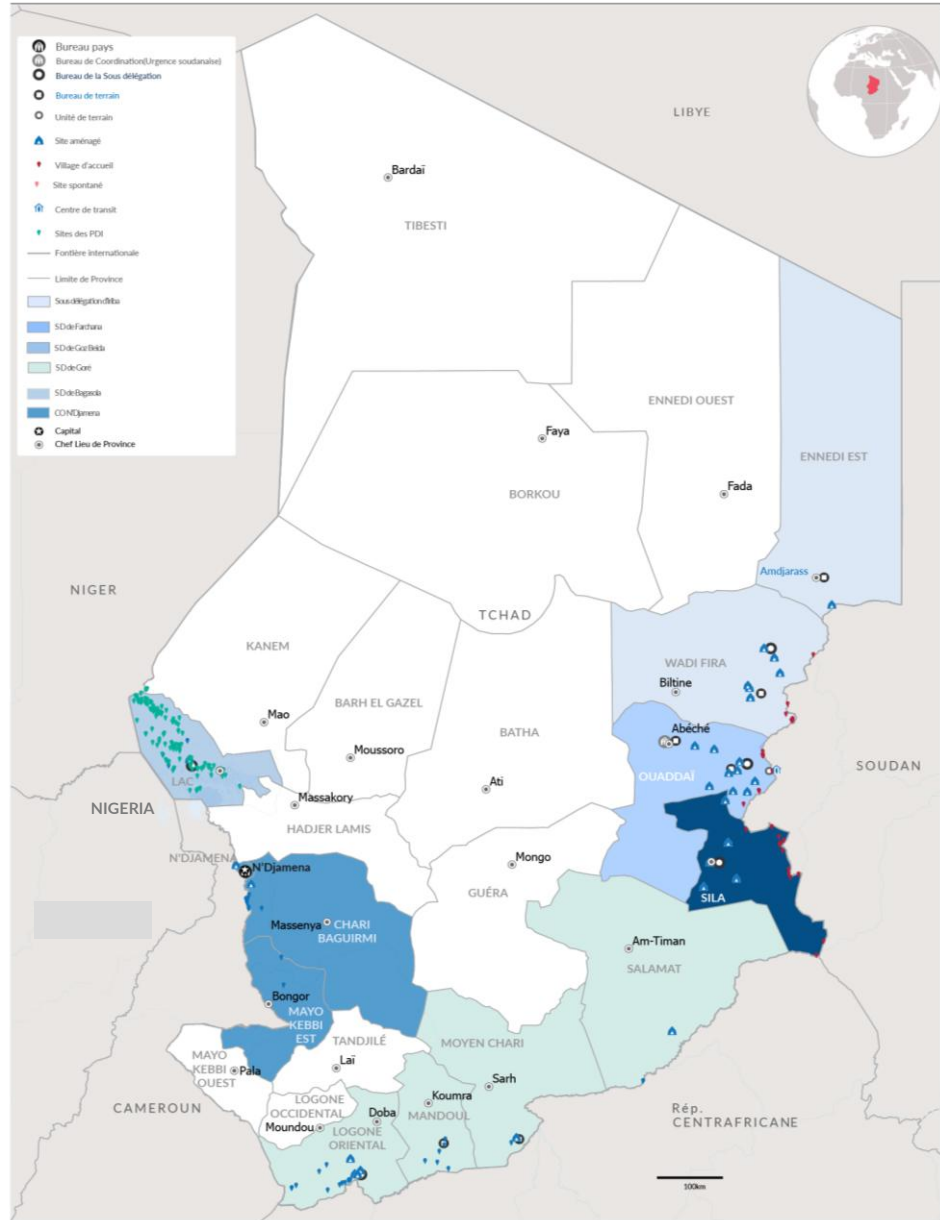
18, 887

Cameroonian refugees assisted for voluntary repatriation

918, 761

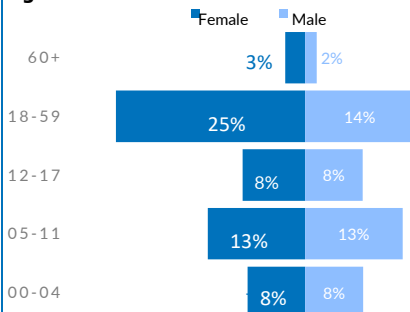
New arrivals from Sudan since April 2023

* Returned migrants at risk of statelessness from: Niger, CAR, and Sudan.

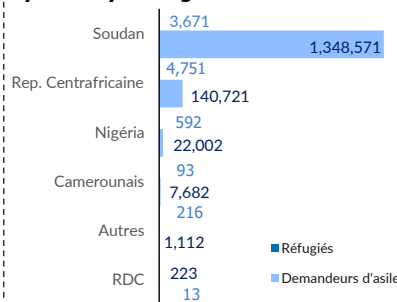


REFUGEES AND ASYLUM SEEKERS

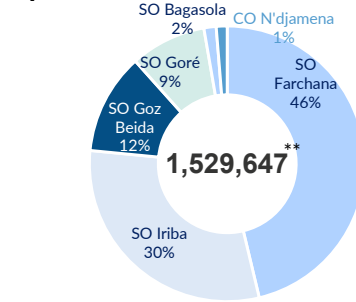
Age Cohort



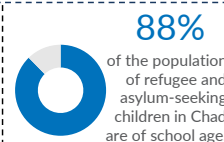
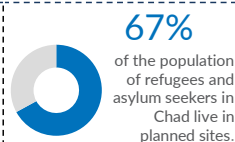
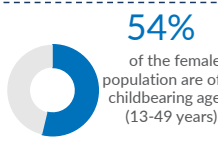
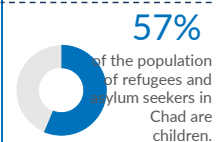
By Country of Origin



By Sub Office



** Population réfugié et demandeurs d'asile

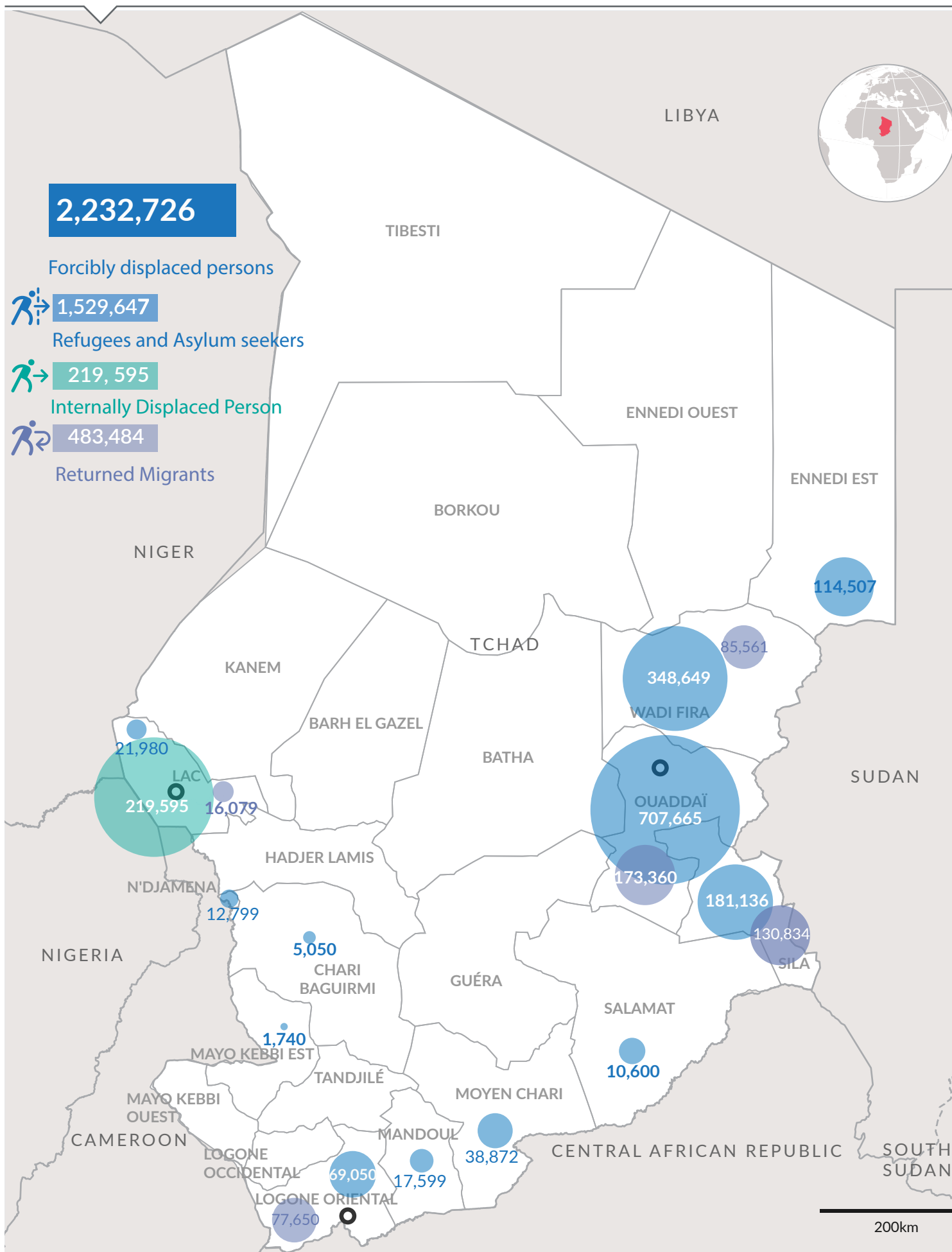


1,211
Students receive scholarships, including 278 through the DAFI programme and 655 thanks to CBI support.



CHAD: FORCIBLY DISPLACED PERSONS

31 Mar. 2026



The boundaries and names shown and the designations used on this map do not imply official endorsement or acceptance by the United Nations.



CHAD: REFUGEES AND ASYLUM SEEKERS

March 2026

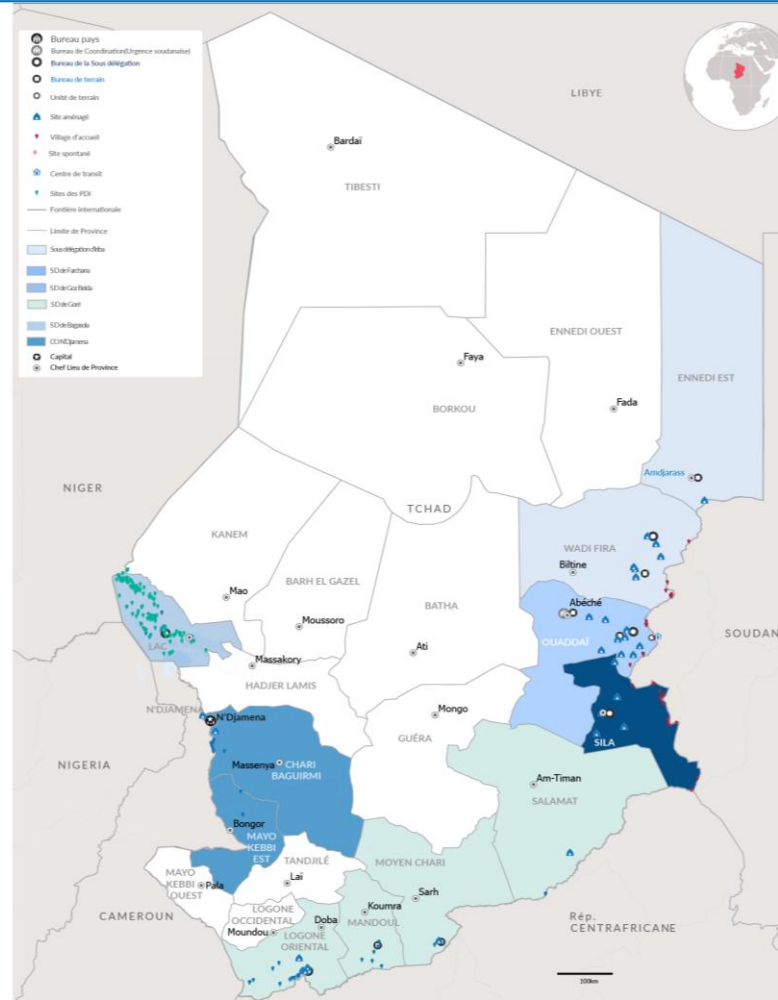
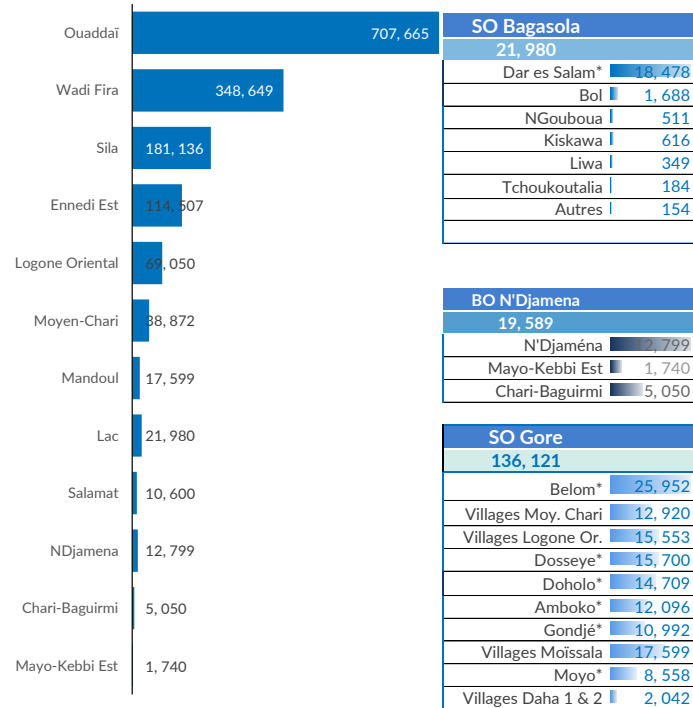


1, 529, 647
INDIVIDUALS



375, 583
HOUSEHOLDS

By Province



Abeche Coordination Office	
1,351,957	
SO Iriba	
463,156	
Touloum* 68,420	
Am Nabak* 33,804	
Iridimi* 42,084	
Goudrane 49,767	
Frontières 9,034	
FO Amdjarass	
114,507	
Oue Cassoni* 114,507	
FO Guéréda	
145,540	
Mile* 62,343	
Kounoungou* 28,806	
Koursigue* 13,131	
Marasabre 35,297	
Birak 2,761	
Koulbous 3,202	
SO Farchana	
707,665	
Farchana* 57,257	
Aboutengué* 48,869	
Metche* 43,344	
Gaga* 41,394	
Adre 235,317	
Border(Ouaddaï) 26,934	
FO Abeche	
34,899	
Kouchaguine- M.* 25,426	
Abéché et Abougoudam 9,473	
FO Hadjer Hadid	
219,651	
Bredjing* 57,779	
Alacha* 53,128	
Treguine* 31,809	
Arkoum* 56,649	
Dougui* 20,286	
FO Goz Beida	
181,136	
Goz Amir* 46,347	
Zabout* 55,659	
Djabal* 38,682	
Kerfi 11,910	
Border(Sila) 28,538	

Principales nationalités(Ref. & ASY)

1,352,242	145,472	22,594	7,775	1,564
SUDANESE	CENTRAL AFRICANS	NIGERIANS	CAMEROONIANS	OTHER NATIONALITIES
Essentially located in the 21 planned sites and 1 reception village in the East and in urban areas.	Located in the six camps, sites, and host villages in the South and in urban areas.	Primarily located in the Dar Es Salam camp and host villages in the Lake Province as well as in urban areas.	Mainly composed of populations who fled intercommunal clashes in the Logone and Chari department in Cameroon. They are located in the two camps around N'Djamena and on the banks of the Logone River.	Outside the major nationalities, there are individuals of various origins: Algeria, Benin, Burkina Faso, Burundi, Côte d'Ivoire, Republic of the Congo, Egypt, Eritrea, Ethiopia, Gabon, Libya, Mali, Islamic Republic of Iran, Rwanda, Senegal, Somalia, South Sudan, Palestine, Yemen.

KEY FIGURES ON THE SUDANESE CRISIS

918,761 409,819

New arrivals from Sudan 2023.

Sudanese refugees in Chad before the 2023 crisis.

* Planned site