

Russian Federation: country profile for child and adolescent health

This profile provides a snapshot of the national situation of children and adolescents in the context of the strategy for child and adolescent health and well-being in the WHO European Region, 2026–2030: a healthy start for a healthy life.¹



Country at a glance

Total population
145 440 500

Under 18 population
30 181 251

Under 5 population
7 204 654

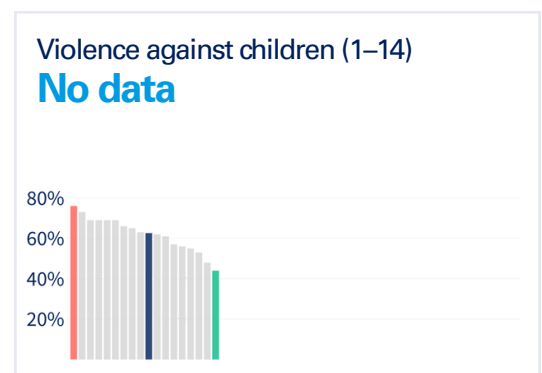
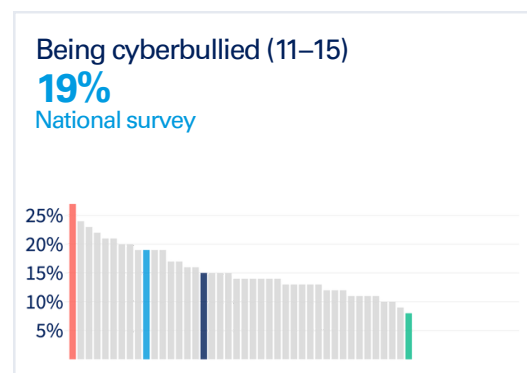
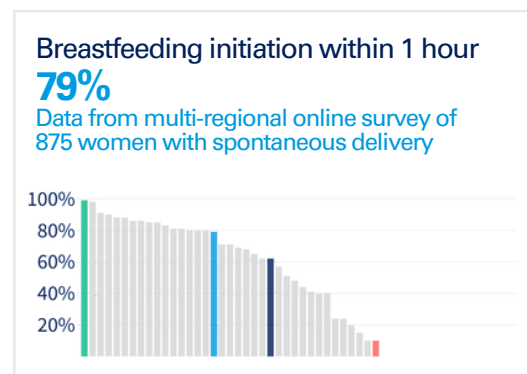
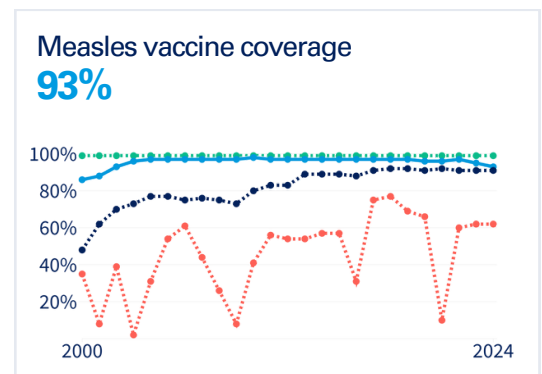
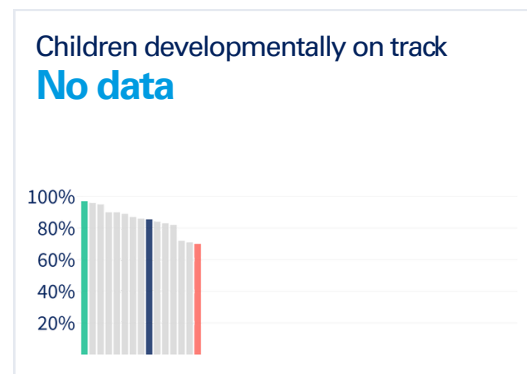
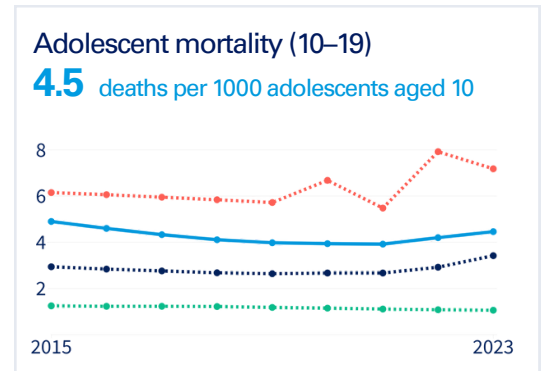
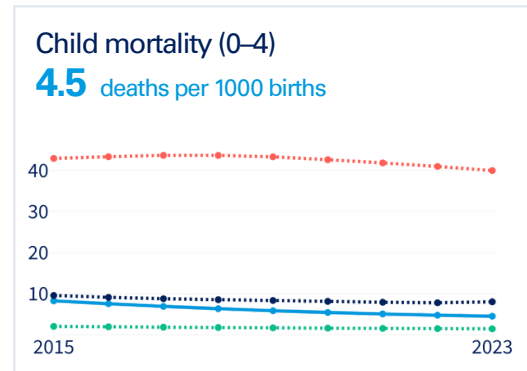
Adolescent population (10–19)
16 690 083

GDP per capita (PPP)
47 405 Int\$

GDP = Gross domestic product
PPP = Purchasing power parity

1. Child and adolescent development and health status

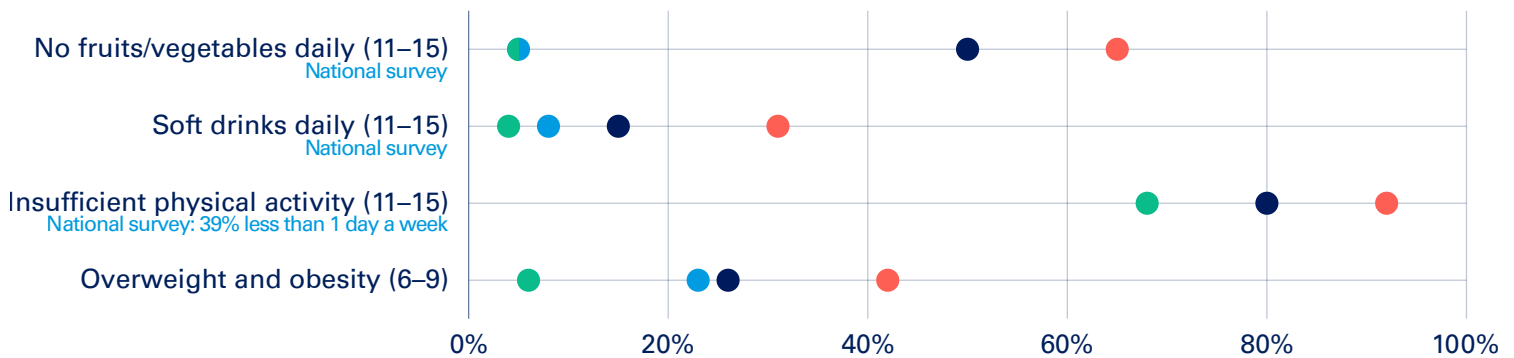
● Russian Federation ● WHO European Region average ● Weaker-performing country
● Stronger-performing country



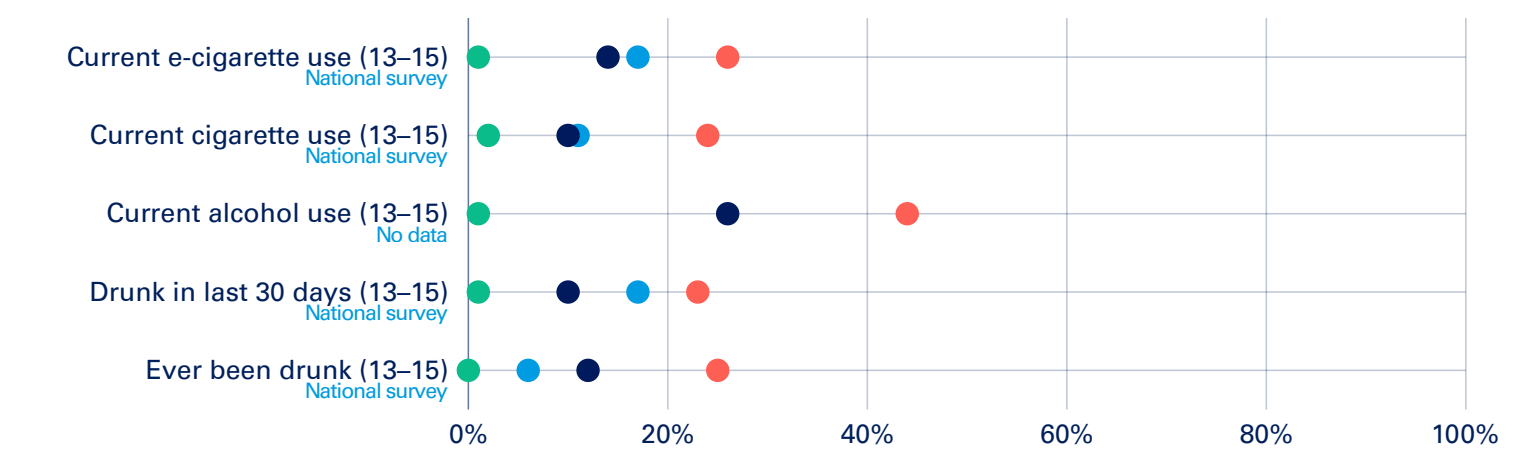
2. Health behaviours and outcomes

● Russian Federation ● WHO European Region average ● Weaker-performing country ● Stronger-performing country

Nutrition, physical activity and obesity

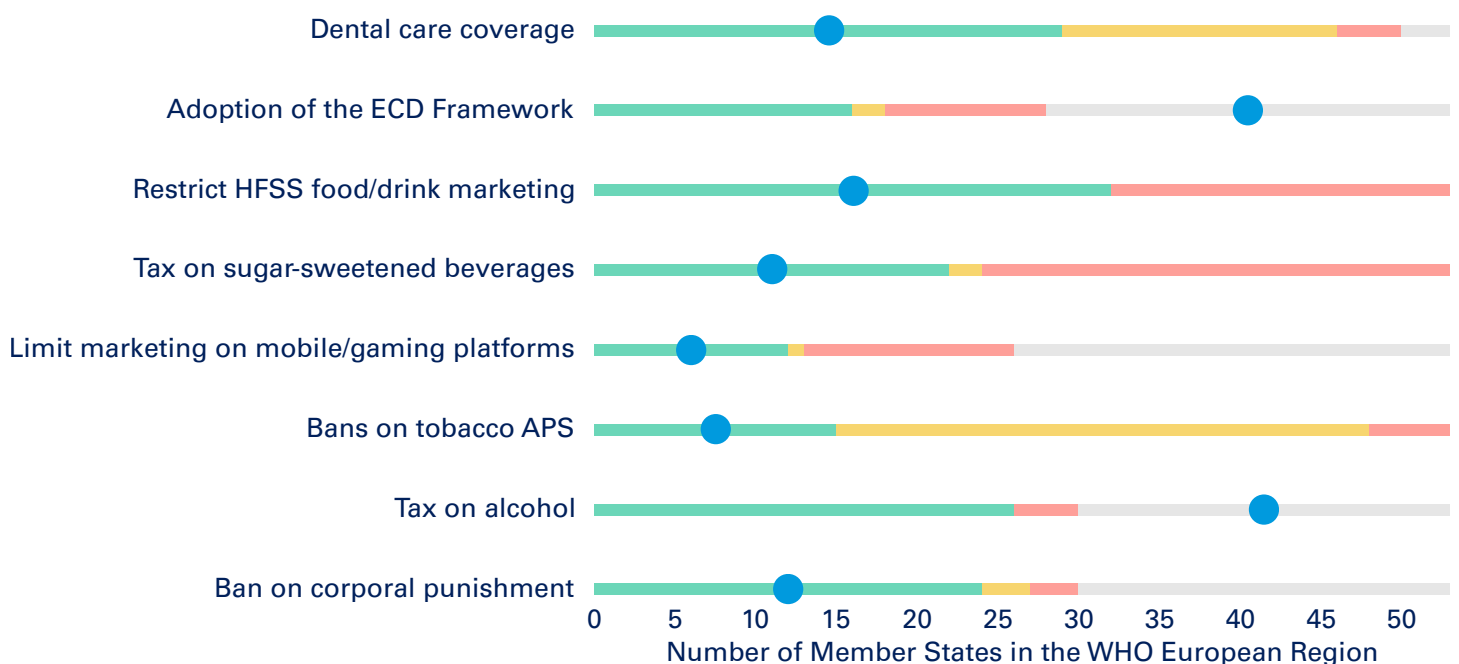


Tobacco and alcohol



3. Policies for child and adolescent health

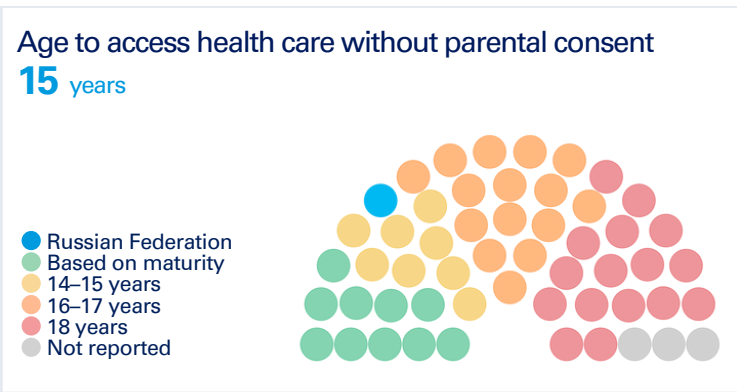
● Russian Federation ● Yes/implemented ● Partial implementation/planned ● No/not implemented ● Data missing



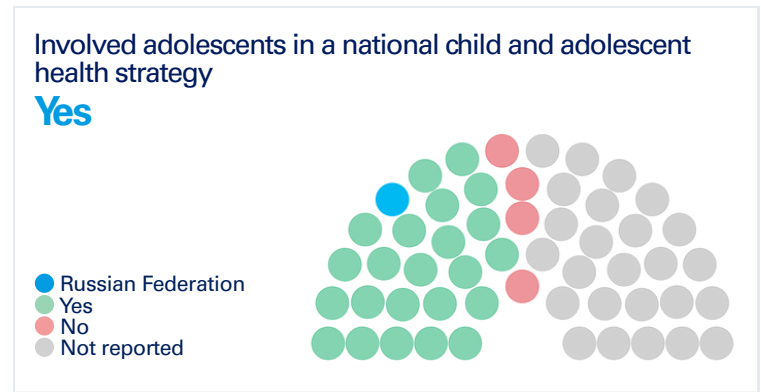
APS = Advertising, promotion and sponsorship
 ECD = Early childhood development
 HFSS = High in fat, salt or sugar

4. System performance for child and adolescent health

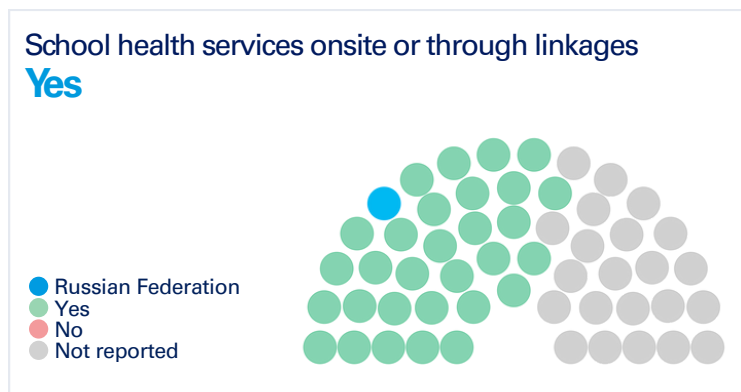
Child and adolescent rights



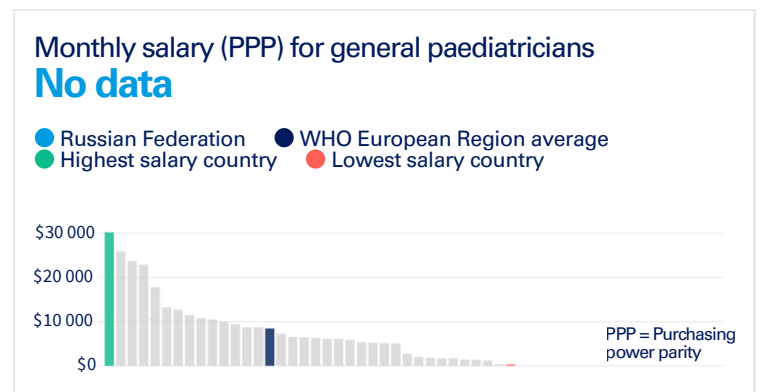
Adolescent participation



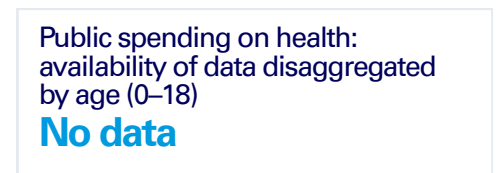
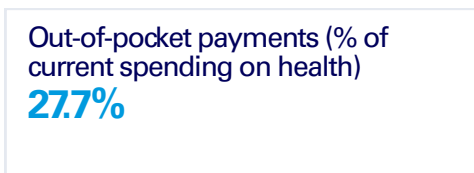
Service delivery



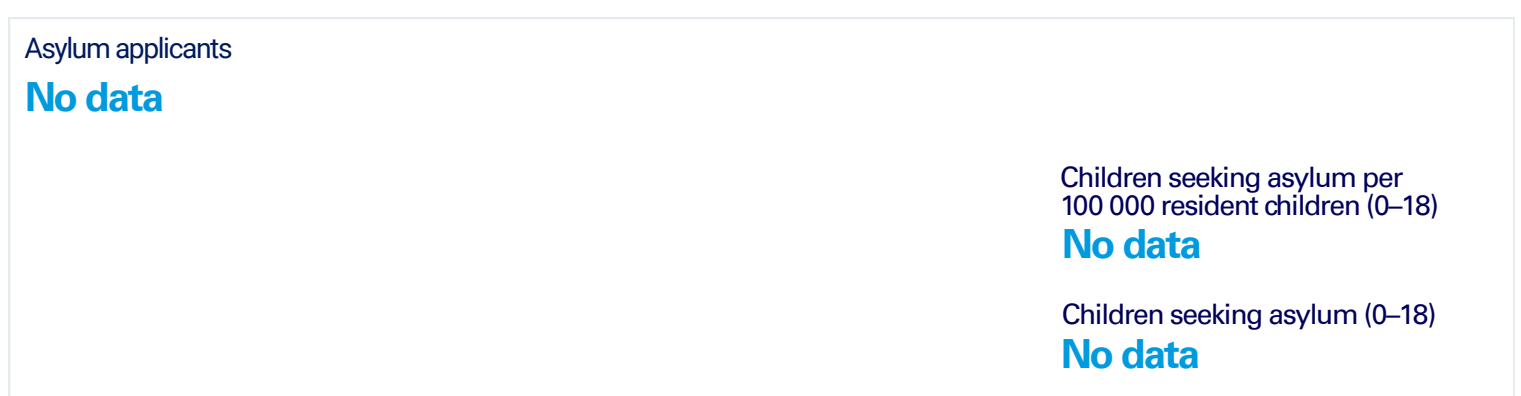
Workforce



Financing



Children and adolescents in vulnerable situations



Annex 1. Indicator definitions and sources¹

Adolescent mortality (10–19): number of deaths among adolescents (10–19 years) per 1000 adolescents aged 10 in a given year.
Source: Most recent stillbirth, child and adolescent mortality estimates [online database]. New York: United Nations Inter-agency Group for Child Mortality Estimation; 2025 (<https://childmortality.org/?indicator=MRY10T19>).

Adolescent population: adolescents aged 10–19 years.
Source: TransMonEE Regional Dashboard on Children: Monitoring child rights data in Europe and Central Asia. Child Rights Landscape and Governance Domain [online database]. New York: UNICEF; 2025 (<https://www.transmonee.org/europe-central-asia-child-rights-data-dashboard?prj=tm&page=DEM>).

Adoption of the Early Childhood Development Framework: adoption of the WHO Framework on Early Childhood Development in the WHO European Region.
Source: WHO Regional Office for Europe. WHO European Region Member States survey; 2025 (unpublished).

Age to access health care without parental consent: legal minimum age at which adolescents can access health services without parental consent.
Sources: WHO Regional Office for Europe. WHO European Region Member States survey, 2025 (unpublished); Child and adolescent health in Europe: report on progress to 2021. Copenhagen: WHO Regional Office for Europe; 2024 (<https://iris.who.int/handle/10665/378973>). Licence: CC BY-NC-SA 3.0 IGO.

Asylum applicants: percentage of children (0–18) of total asylum applicants disaggregated by those who arrive in the country accompanied and those who are unaccompanied (separated from both parents and not cared for by a guardian or other adult who is legally or customarily responsible for them); number of children (0–18) seeking asylum per 100 000 child population (0–18); total number of children (0–18) seeking asylum.
Sources: Refugee Data Finder [online database]. Geneva: United Nations Refugee Agency; 2025 (<http://bit.ly/4nAFsmJ>); Reference metadata [online database]. Brussels: Eurostat; 2025 (https://ec.europa.eu/eurostat/cache/metadata/en/migr_asyapp_esms.htm); Accredited official statistics: How many people claim asylum in the UK? [website]. Government of the United Kingdom; 2025 (<https://www.gov.uk/government/statistics/immigration-system-statistics-year-ending-december-2024/how-many-people-claim-asylum-in-the-uk#:~:text=Table%201:%20People%20claiming%20asylum,2024%2C%20by%20age%20and%20sex&text=In%202024%20there%20were%204%2C104,of%20sexual%20orientation%20annual%20chapter>); Kovačević N. Country Report: Statistics. Serbia [online database]. Brussels: Asylum Information Database; 2025 (<https://asylumineurope.org/reports/country/serbia/statistics/>); Kaya A. The World's Leading Refugee Host, Turkey Has a Complex Migration History [website]. Migration policy institute; 2023 (<https://www.migrationpolicy.org/article/turkey-migration-history>); Swiss Refugee Council. Country Report: Switzerland [online database]. Brussels: Asylum Information Database; 2025 (<https://asylumineurope.org/reports/country/switzerland/>); Country Report: Statistics. Poland [online database]. Brussels: Asylum Information Database; 2025 (<https://asylumineurope.org/reports/country/poland/statistics/>).

Ban on corporal punishment: corporal punishment of children is punishable by law.
Source: WHO Regional Office for Europe. WHO European Region Member States survey, 2025 (unpublished).

Bans on tobacco advertising, promotion and sponsorship: colours indicate the status of progress by country. Red: complete absence of ban, or ban that does not cover national television, radio and print media. Yellow: ban on national television, radio and print media as well as on some but not all other forms of direct and/or indirect advertising. Green: ban on all forms of direct and indirect advertising (or at least 90% of the population covered by subnational legislation completely banning tobacco advertising, promotion and sponsorship).
Source: WHO report on the global tobacco epidemic, 2025: warning about the dangers of tobacco. Geneva: World Health Organization; 2025 (<https://iris.who.int/handle/10665/381685>). Licence: CC BY-NC-SA 3.0 IGO.

Being cyberbullied (11–15): percentage of 11–15-year-olds who report experiencing cyberbullying (e.g. being sent mean or threatening messages, or having photos and videos shared without permission) at least once or twice a month in the past couple of months.
Source: Cosma A, Molcho M, Pickett W. A focus on adolescent peer violence and bullying in Europe, central Asia and Canada. Health Behaviour in School-aged Children international report from the 2021/2022 survey. Volume 2. Copenhagen: WHO Regional Office for Europe; 2024 (<https://iris.who.int/handle/10665/376323>). Licence: CC BY-NC-SA 3.0 IGO.

Breastfeeding initiation within 1 hour: percentage of newborns breastfed within the first hour of life.
Sources: Baby-Friendly Hospital Initiative Network [website]. Baby-Friendly Hospital Initiative Network; 2025 (<https://bfhnetwork.com/>); Child and adolescent health in Europe: report on progress to 2021. Copenhagen: WHO Regional Office for Europe; 2024 (<https://iris.who.int/handle/10665/378973>). Licence: CC BY-NC-SA 3.0 IGO; TransMonEE Regional Dashboard on Children:

Monitoring child rights data in Europe and Central Asia. Child Rights Landscape and Governance Domain [online database]. New York: UNICEF; 2025 (<https://www.transmonee.org/europe-central-asia-child-rights-data-dashboard?prj=tm&page=DEM>).

Child mortality (0–4): number of deaths among children under age 5 per 1000 live births in a given year.
Source: Most recent stillbirth, child and adolescent mortality estimates [online database]. New York: United Nations Inter-agency Group for Child Mortality Estimation; 2025 (<https://childmortality.org/?indicator=MRY10T19>).

Children developmentally on track: percentage of children aged 24–59 months who are developmentally on track in at least three of the following domains: literacy–numeracy, physical development, social emotional development and learning. The data covers 36–59 months, except for Uzbekistan, which used the new Early Childhood Development Index calculation method for 24–59 months.
Source: TransMonEE Regional Dashboard on Children: Monitoring child rights data in Europe and Central Asia. Child Rights Landscape and Governance Domain [online database]. New York: UNICEF; 2025 (<https://www.transmonee.org/europe-central-asia-child-rights-data-dashboard?prj=tm&page=DEM>); Türkiye child survey 2022. New York: UNICEF; 2023 (<https://www.unicef.org/turkiye/en/reports/t%C3%BCrkiye-child-survey-2022>).

Current alcohol use (13–15): percentage of 13–15-year-olds who report drinking alcohol in the past 30 days.
Source: Charrier L, van Dorsselaer S, Canale N, Baska T, Kilibarda B, Comoretto RI et al. A focus on adolescent substance use in Europe, central Asia and Canada. Health Behaviour in School-aged Children international report from the 2021/2022 survey. Volume 3. Copenhagen: WHO Regional Office for Europe; 2024 (<https://iris.who.int/handle/10665/376573>). Licence: CC BY-NC-SA 3.0 IGO.

Current cigarette use (13–15): percentage of 13–15-year-olds who report using cigarettes at least once in the past 30 days.
Source: Charrier L, van Dorsselaer S, Canale N, Baska T, Kilibarda B, Comoretto RI et al. A focus on adolescent substance use in Europe, central Asia and Canada. Health Behaviour in School-aged Children international report from the 2021/2022 survey. Volume 3. Copenhagen: WHO Regional Office for Europe; 2024 (<https://iris.who.int/handle/10665/376573>). Licence: CC BY-NC-SA 3.0 IGO.

Current e-cigarette use (13–15): percentage of 13–15-year-olds who report using electronic cigarettes at least once in the past 30 days.
Source: Charrier L, van Dorsselaer S, Canale N, Baska T, Kilibarda B, Comoretto RI et al. A focus on adolescent substance use in Europe, central Asia and Canada. Health Behaviour in School-aged Children international report from the 2021/2022 survey. Volume 3. Copenhagen: WHO Regional Office for Europe; 2024 (<https://iris.who.int/handle/10665/376573>). Licence: CC BY-NC-SA 3.0 IGO.

Drunk in last 30 days (13–15): percentage of 13–15-year-olds who report being drunk at least once in the past 30 days.
Source: Charrier L, van Dorsselaer S, Canale N, Baska T, Kilibarda B, Comoretto RI et al. A focus on adolescent substance use in Europe, central Asia and Canada. Health Behaviour in School-aged Children international report from the 2021/2022 survey. Volume 3. Copenhagen: WHO Regional Office for Europe; 2024 (<https://iris.who.int/handle/10665/376573>). Licence: CC BY-NC-SA 3.0 IGO.

Dental care coverage: dental care for children and adolescents (0–18) covered under national health insurances schemes or government benefit packages.
Sources: WHO Regional Office for Europe. WHO European Region Member States survey, 2025 (unpublished); Child and adolescent health in Europe: report on progress to 2021. Copenhagen: WHO Regional Office for Europe; 2024 (<https://iris.who.int/handle/10665/378973>). Licence: CC BY-NC-SA 3.0 IGO.

Ever been drunk (13–15): percentage of 13–15-year-olds who report having been drunk on two or more occasions in their lifetime.
Source: Charrier L, van Dorsselaer S, Canale N, Baska T, Kilibarda B, Comoretto RI et al. A focus on adolescent substance use in Europe, central Asia and Canada. Health Behaviour in School-aged Children international report from the 2021/2022 survey. Volume 3. Copenhagen: WHO Regional Office for Europe; 2024 (<https://iris.who.int/handle/10665/376573>). Licence: CC BY-NC-SA 3.0 IGO.

Gross domestic product per capita: total value of goods and services produced in a country divided by its population, adjusted for purchasing power parity expressed in current international dollars.
Source: International Comparison Program [website]. World Bank; 2025 (<https://www.worldbank.org/en/programs/icp>).

Involved adolescents in a national child and adolescent health strategy: adolescents participated in the development, implementation or review of national child and adolescent health strategies or policies.
Sources: WHO Regional Office for Europe. WHO European Region Member States survey, 2025 (unpublished); Child and adolescent health in Europe:

report on progress to 2021. Copenhagen: WHO Regional Office for Europe; 2024 (<https://iris.who.int/handle/10665/378973>). Licence: CC BY-NC-SA 3.0 IGO.

Insufficient physical activity (11–15): percentage of 11–15-year-olds not reporting daily physical activity for at least 60 minutes. This indicator is the complement of the original measure collected through the Health Behaviour in School-aged Children survey on regular moderate to vigorous physical activity. Physical activity was defined as any activity that increases the heart rate and makes the person get out of breath some of this time, with examples provided.

Source: Rakić JG, Hamrik Z, Dzielska A, Felder-Puig R, Oja L, Bakalár P et al. A focus on adolescent physical activity, eating behaviours, weight status and body image in Europe, central Asia and Canada. Health Behaviour in School-aged Children international report from the 2021/2022 survey. Volume 4. Copenhagen: WHO Regional Office for Europe; 2024 (<https://iris.who.int/handle/10665/376772>). Licence: CC BY-NC-SA 3.0 IGO.

Limit marketing on mobile/gaming platforms: existence and implementation of restrictions on food and beverage marketing on mobile and gaming platforms.

Source: WHO Regional Office for Europe. WHO European Region Member States survey, 2025 (unpublished).

Measles vaccine coverage: percentage of children who received the second dose of measles-containing vaccine.

Source: WHO/UNICEF estimates of national immunization coverage. Immunization Analysis and Insights [website]. World Health Organization; 2025 (<https://www.who.int/teams/immunization-vaccines-and-biologicals/immunization-analysis-and-insights/global-monitoring/immunization-coverage/who-unicef-estimates-of-national-immunization-coverage>).

Monthly salary for general paediatricians: average monthly salary of general paediatricians before tax adjusted for purchasing power parity expressed in current international dollars.

Sources: WHO Regional Office for Europe. WHO European Region Member States survey, 2025 (unpublished); Child and adolescent health in Europe: report on progress to 2021. Copenhagen: WHO Regional Office for Europe; 2024 (<https://iris.who.int/handle/10665/378973>). Licence: CC BY-NC-SA 3.0 IGO.

Multiple health complaints (well-being and mental health) (11–15): percentage of 11–15-year-olds who report two or more health complaints (from a list including headache, stomach ache, backache, feeling low, irritability, nervousness, difficulty sleeping and dizziness) at least weekly in the past six months.

Source: Cosma A, Abdrakhmanova S, Taut D, Schrijvers K, Catunda C, Schnohr C. A focus on adolescent mental health and wellbeing in Europe, central Asia and Canada. Health Behaviour in School-aged Children international report from the 2021/2022 survey. Volume 1. Copenhagen: WHO Regional Office for Europe; 2023 (<https://iris.who.int/handle/10665/373201>). Licence: CC BY-NC-SA 3.0 IGO.

No fruits/vegetables daily (11–15): percentage of 11–15-year-olds who report eating neither fruit nor vegetables daily.

Source: Rakić JG, Hamrik Z, Dzielska A, Felder-Puig R, Oja L, Bakalár P et al. A focus on adolescent physical activity, eating behaviours, weight status and body image in Europe, central Asia and Canada. Health Behaviour in School-aged Children international report from the 2021/2022 survey. Volume 4. Copenhagen: WHO Regional Office for Europe; 2024 (<https://iris.who.int/handle/10665/376772>). Licence: CC BY-NC-SA 3.0 IGO.

Out-of-pocket payments (percentage of current spending on health):

percentage of current health expenditure paid directly by households out-of-pocket.
Source: UHC Watch [online database]. Copenhagen: WHO Regional Office for Europe; 2025 (<https://apps.who.int/dhis2/uhcwatch/#/>).

Overweight and obesity (6–9): percentage of children aged 6–9 classified as overweight or obese (WHO criteria).

Source: WHO European Childhood Obesity Surveillance Initiative (COSI) [website]. WHO Regional Office for Europe; 2025 ([https://www.who.int/europe/initiatives/who-european-childhood-obesity-surveillance-initiative-\(cosi\)](https://www.who.int/europe/initiatives/who-european-childhood-obesity-surveillance-initiative-(cosi))).

Public spending on health (availability of data disaggregated by age (0–18)):

availability of data on total government spending on health for children and adolescents aged 0–18.
Source: WHO Regional Office for Europe. WHO European Region Member States survey, 2025 (unpublished).

Public spending on health (percentage of total public spending): domestic general government health expenditure as a percentage of general government expenditure.

Source: UHC Watch [online database]. Copenhagen: WHO Regional Office for Europe; 2025 (<https://apps.who.int/dhis2/uhcwatch/#/>).

Restrict high in fat, sugar and salt food/drink marketing: existence and implementation status of policy restricting marketing of high in fat, sugar and salt foods and drinks to children and adolescents.

Source: NCD country capacity survey 2023 [website]. Geneva: World Health Organization; 2025 (<https://www.who.int/data/gho/data/themes/topics/noncommunicable-diseases-national-capacity>).

School health services onsite or through linkages: health services are available in schools or through linkages with the health system according to policy.

Source: WHO Regional Office for Europe. WHO European Region Member States survey, 2025 (unpublished).

Soft drinks daily (11–15): percentage of 11–15-year-olds who report daily consumption (at least once per day) of sugary soft drinks.

Source: Rakić JG, Hamrik Z, Dzielska A, Felder-Puig R, Oja L, Bakalár P et al. A focus on adolescent physical activity, eating behaviours, weight status and body image in Europe, central Asia and Canada. Health Behaviour in School-aged Children international report from the 2021/2022 survey. Volume 4. Copenhagen: WHO Regional Office for Europe; 2024 (<https://iris.who.int/handle/10665/376772>). Licence: CC BY-NC-SA 3.0 IGO.

Tax on alcohol: implementation of a national tax or pricing policy to reduce the affordability of alcohol.

Source: WHO Regional Office for Europe. WHO European Region Member States survey, 2025 (unpublished).

Tax on sugar-sweetened beverages: existence of a national tax on sugar-sweetened beverages. *Source:* Global SSB Tax Database [online database]. Washington DC: World Bank; 2025 (<https://ssbtax.worldbank.org/>).

Total population: population is based on the de facto definition of population, which counts all residents regardless of legal status or citizenship.

Source: TransMonEE Regional Dashboard on Children: Monitoring child rights data in Europe and Central Asia. Child Rights Landscape and Governance Domain [online database]. New York: UNICEF; 2025 (<https://www.transmonee.org/europe-central-asia-child-rights-data-dashboard?prj=tm&page=DEM>).

Under 5 population: children aged 0–4 years old.

Source: TransMonEE Regional Dashboard on Children: Monitoring child rights data in Europe and Central Asia. Child Rights Landscape and Governance Domain [online database]. New York: UNICEF; 2025 (<https://www.transmonee.org/europe-central-asia-child-rights-data-dashboard?prj=tm&page=DEM>).

Under 18 population: children aged 0–17 years.

Source: TransMonEE Regional Dashboard on Children: Monitoring child rights data in Europe and Central Asia. Child Rights Landscape and Governance Domain [online database]. New York: UNICEF; 2025 (<https://www.transmonee.org/europe-central-asia-child-rights-data-dashboard?prj=tm&page=DEM>).

Violence against children (1–14): percentage of children aged 1–14 who have experienced any physical punishment and/or psychological aggression by caregivers.

Source: TransMonEE Regional Dashboard on Children: Monitoring child rights data in Europe and Central Asia. Family Environment and Protection Domain [online database]. New York: UNICEF; 2025 (<https://www.transmonee.org/europe-central-asia-child-rights-data-dashboard?prj=tm&page=VIO>).

The designations employed and the presentation of the material in this publication do not imply the expression of any opinion whatsoever on the part of WHO concerning the legal status of any country, territory, city or area or of its authorities, or concerning the delimitation of its frontiers or boundaries. Dotted and dashed lines on maps represent approximate border lines for which there may not yet be full agreement.

Suggested citation. Russian Federation: country profile for child and adolescent health. Copenhagen: WHO Regional Office for Europe; 2025. Licence: CC BY-NC-SA 3.0 IGO.

© World Health Organization 2025. Some rights reserved. This work is available under the CC BY-NC-SA 3.0 IGO license (<https://creativecommons.org/licenses/by-nc-sa/3.0/igo>).

WHO/EURO:2025-12775-52549-81328 (PDF)
WHO/EURO:2025-12775-52549-81327 (print)