

June 2025

KEY FIGURES ON FORCIBLY DISPLACED PERSONS

2,066,179

Total

1,430,070

Refugees

8,788

Asylum seekers

225,689

Internally displaced persons (Lake)

401,632*

Returned migrants

Others keys figures

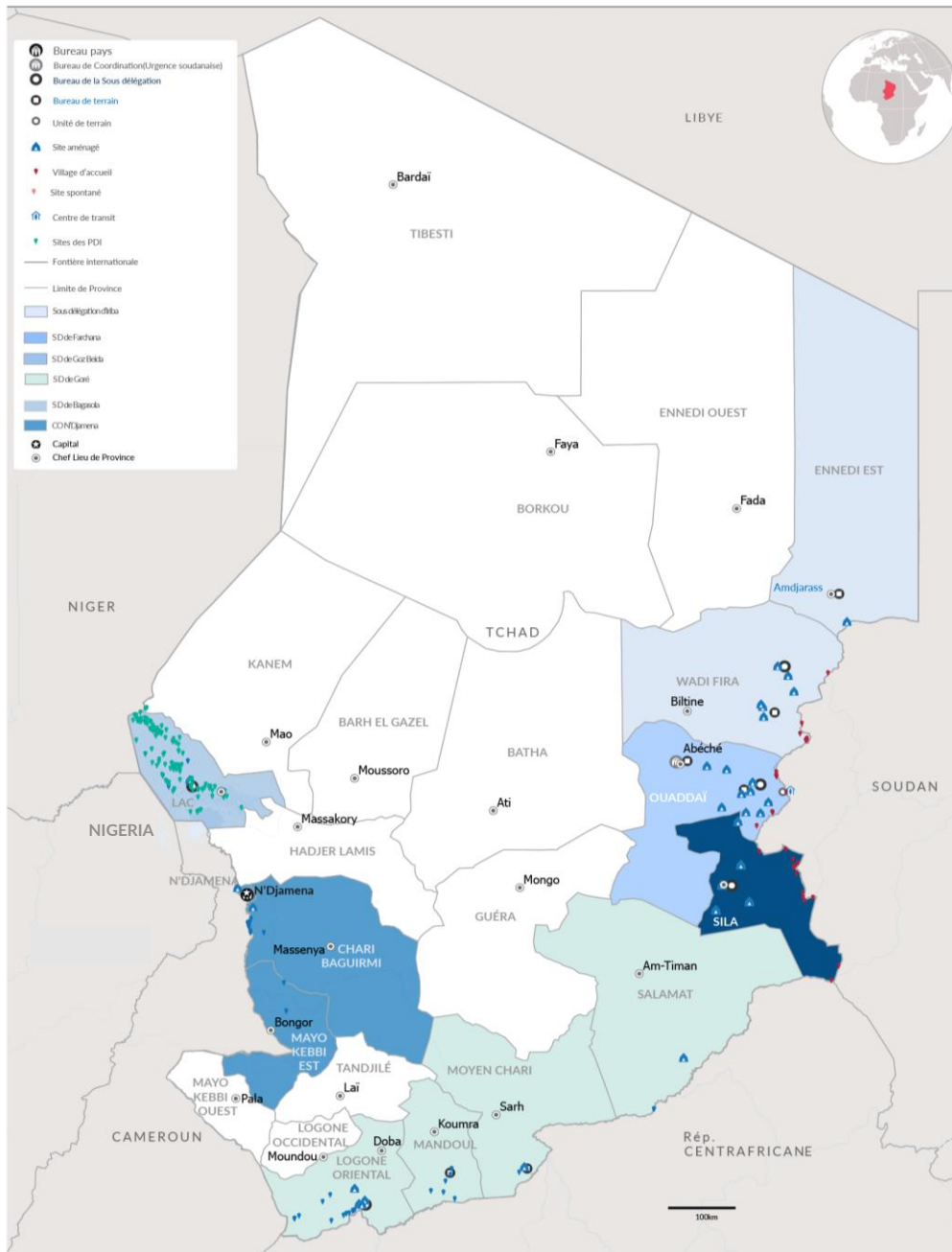
17,789

Cameroonian refugees assisted for voluntary repatriation

867,999

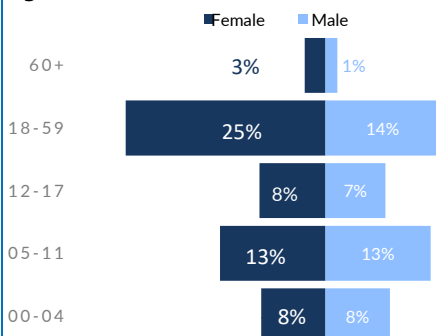
New arrivals from Sudan since April 2023

* Returned migrants at risk of statelessness from: Niger, CAR, and Sudan.

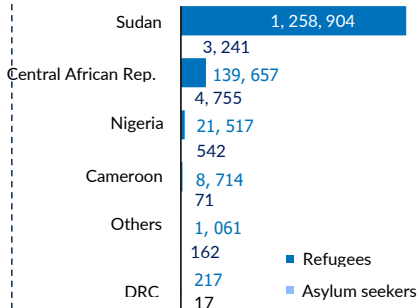


REFUGEES AND ASYLUM SEEKERS

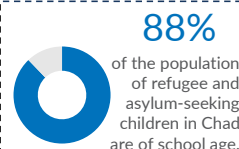
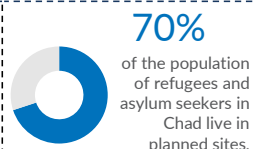
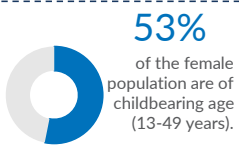
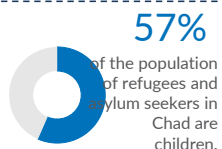
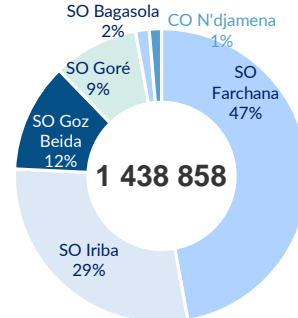
Age Cohort



By Country of Origin



By Sub Office



2,476
Refugee candidates will sit for the written baccalaureate exams during the June 2025 session

June 2025

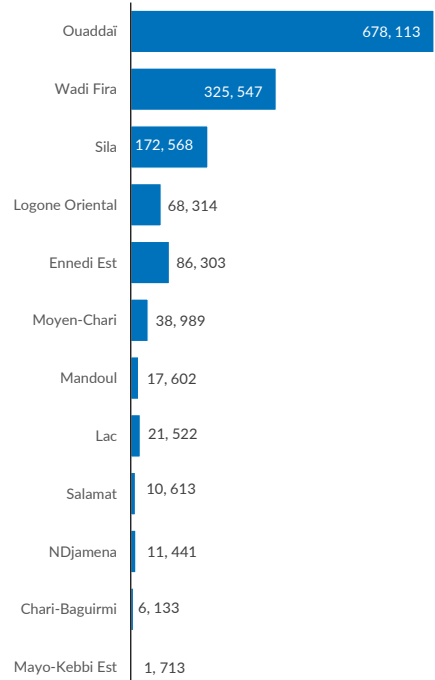


1, 438, 858
INDIVIDUALS



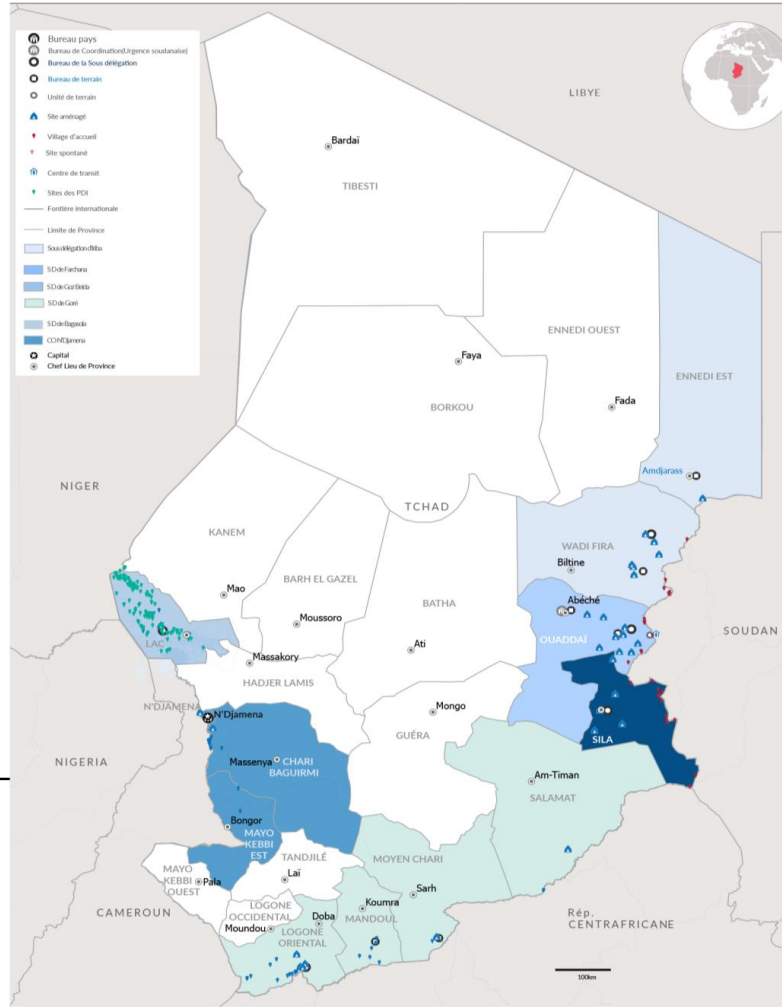
354, 816
HOUSEHOLDS

By Province



SO Bagasola	
Dar es Salam*	18, 379
Bol	1, 600
NGouboua	513
Kiskawa	438
Liwa	340
Tchoukoutalia	196
Kiskra	0
Autres	56

BO N'Djamena	
N'Djaména	11, 441
Mayo-Kebbi Est	1, 713
Chari-Baguirmi	6, 133



Abeche Coordination Office
1, 260, 133

SO Iriba	411, 850
Touloum*	56, 612
Am Nabak*	33, 844
Iridimi*	73, 219
Border	20,370
FO Amdjarass	86, 303
Oure Cassoni*	86, 303
FO Guéréda	141, 502
Mile*	61, 715
Kounoungou*	28, 843
Koursigue*	13, 103
Border(Dar Tama)	37, 841
SO Farchana	675, 715
Farchana*	54, 813
Aboutengué*	46, 689
Metche*	42, 015
Gaga*	39, 170
Adre	237, 226
Border(Ouaddaï)	26, 934
FO Abeche	27, 137
Kouchaguine- M.*	17, 792
Abéché	9, 345
FO Hadjer Hadid	201, 731
Bredjing*	55, 953
Alacha*	47, 516
Treguine*	30, 649
Arkoum*	50, 130
Dougouï*	17, 483
SO Goz Beida	172, 568
Goz Amir*	44, 639
Zabout*	51, 945
Djabal*	37, 588
Kerfi	11, 192
Border(Sila)	27, 204

Principales nationalités(Ref. & ASY)

1, 262, 145

SUDANESE

Essentially located in the 21 planned sites and 1 reception village in the East and in urban areas.

* Planned site

144, 412

CENTRAL AFRICANS

Located in the six camps, sites, and host villages in the South and in urban areas.

22, 059

NIGERIANS

Primarily located in the Dar Es Salam camp and host villages in the Lake Province as well as in urban areas.

8, 785

CAMEROONIANS

Mainly composed of populations who fled intercommunal clashes in the Logone and Chari department in Cameroon. They are located in the two camps around N'Djamena and on the banks of the Logone River.

1, 457

OTHER NATIONALITIES

Outside the major nationalities, there are individuals of various origins: Algeria, Benin, Burkina Faso, Burundi, Côte d'Ivoire, Republic of the Congo, Egypt, Eritrea, Ethiopia, Gabon, Libya, Mali, Islamic Republic of Iran, Rwanda, Senegal, Somalia, South Sudan, Palestine, Yemen.

KEY FIGURES ON THE SUDANESE CRISIS

867, 999 **409, 819**

New arrivals from Sudan 2023.

Sudanese refugees in Chad before the 2023 crisis.