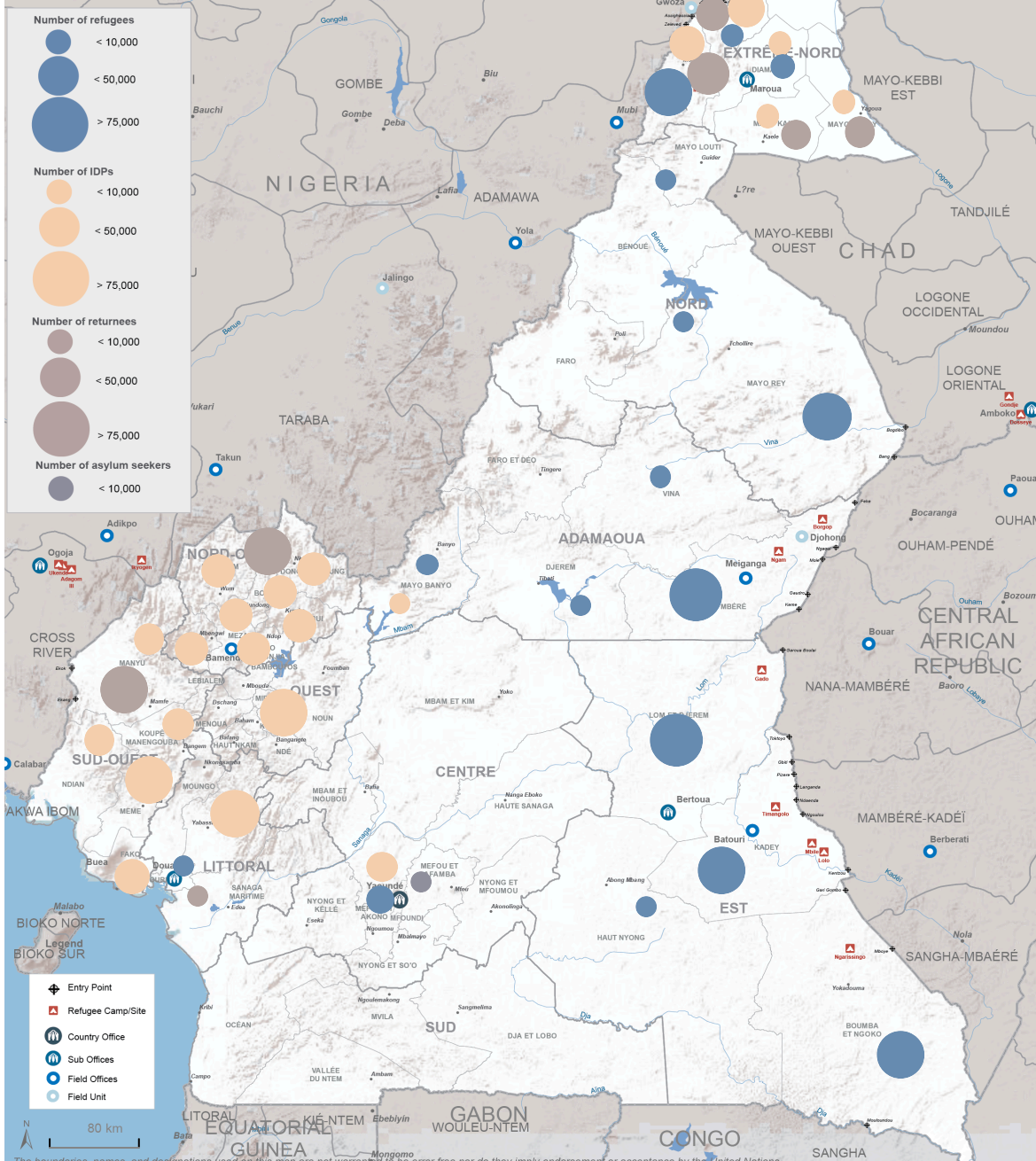


2,100,126 TOTAL FORCIBLY DISPLCED PERSONS**283,478** CENTRAL AFRICAN REFUGEES**126,189** NIGERIAN PERSONS**3,431** REFUGEES OTHERS NATIONALITIES**18,210** ASYLUM SEEKERS**969,273** INTERNALLY DISPLACED PERSONS (IDPs)**699,545** RETURNEES IDPs

The boundaries, names, and designations used on this map are not warranted to be error free nor do they imply endorsement or acceptance by the United Nations.

* Returnees & IDPs: Source: IOM, OCHA
 Refugees & Asylum Seekers: Source: UNHCR

for more information, please contact Claudric DE KALAMBAK (nguenade@unhcr.org)