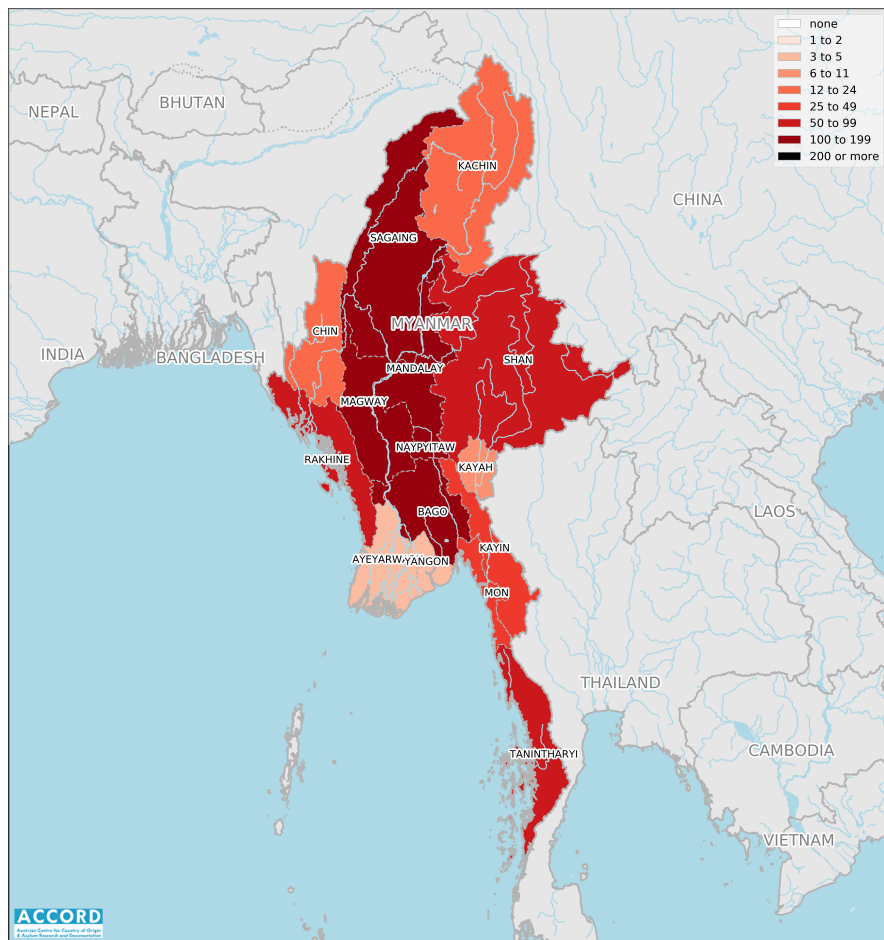


MYANMAR, FOURTH QUARTER 2024:

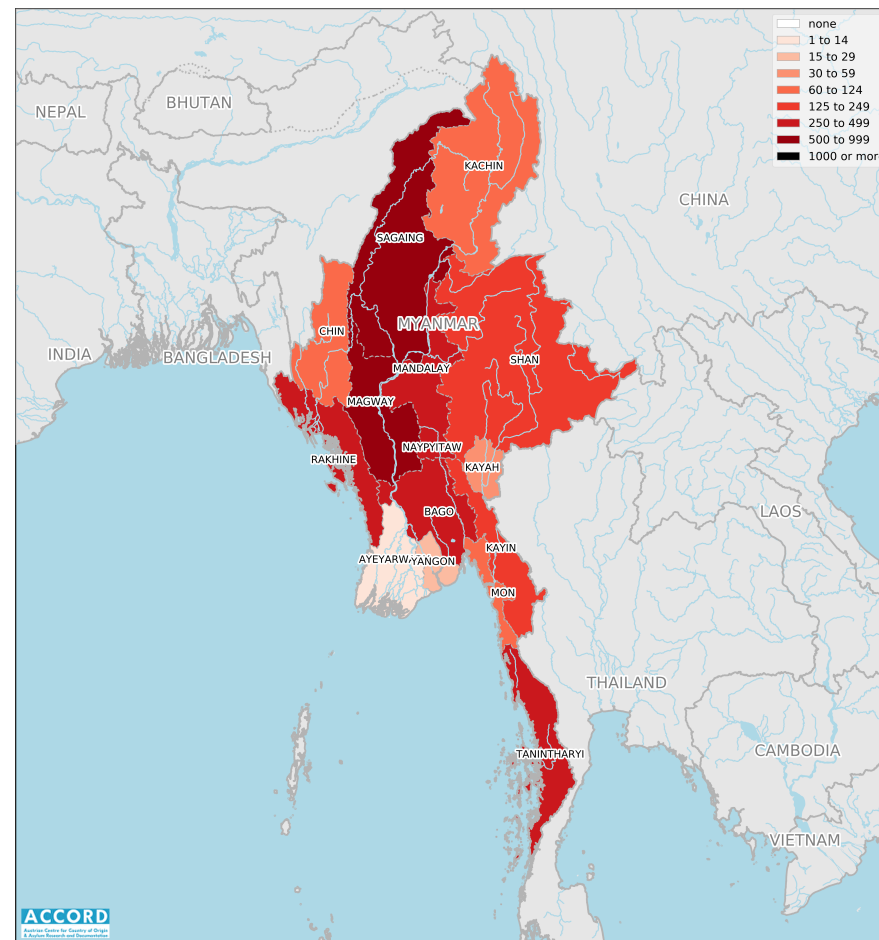
Update on incidents according to the Armed Conflict Location & Event Data Project (ACLED)

compiled by ACCORD, 17 February 2025

Number of reported incidents with at least one fatality



Number of reported fatalities



National borders: [GADM, 6 May 2018a](#); administrative divisions: [GADM, 6 May 2018b](#); Bhutan/China border status: [CIA, 2012](#); China/India border status: [CIA, 2006](#); geodata of disputed borders: [GADM, 6 May 2018a](#); [Natural Earth, nodate](#); incident data: [ACLED, 7 February 2025](#); coastlines and inland waters: [Smith and Wessel, 1 May 2015](#)

Contents

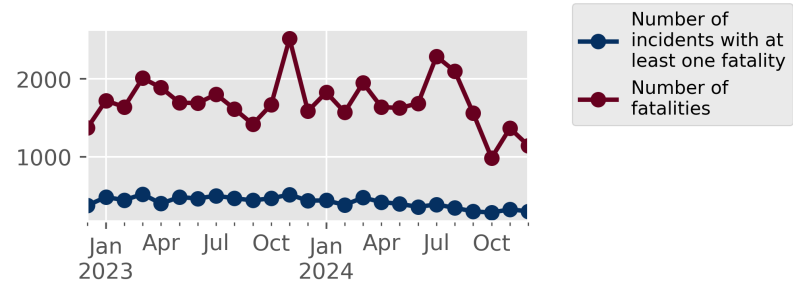
Number of reported fatalities	1
Number of reported incidents with at least one fatality	1
Conflict incidents by category	2
Development of conflict incidents from December 2022 to December 2024	2
Methodology	3
Conflict incidents per province	4
Localization of conflict incidents	4
Disclaimer	9

Conflict incidents by category

Category	Number of incidents	Number of incidents with at least one fatality	Number of fatalities
Explosions / Remote violence	1409	348	1064
Battles	1134	393	2177
Strategic developments	725	2	3
Violence against civilians	502	157	249
Protests	282	0	0
Total	4052	900	3493

This table is based on data from ACLED (datasets used: [ACLED](#), 7 February 2025).

Development of conflict incidents from December 2022 to December 2024



This graph is based on data from ACLED (datasets used: [ACLED](#), 7 February 2025).

Methodology

The data used in this report was collected by the Armed Conflict Location & Event Data Project (ACLED). Based on a variety of sources, ACLED collects data on reported conflict events around the world and provides publicly available event-based datasets. ACLED data contains information on the event type, the date, location, involved actors, and other characteristics of the incident. Most of the data collected by ACLED is gathered based on publicly available reports. As information on fatalities is subject to bias and can vary between sources for the same event, ACLED employs “the most conservative and reliable fatality estimate available”. ACLED uses the reports’ context to estimate fatalities for events with reported fatalities for which the exact number is unknown (“3” or “10” for plural fatalities, depending on the context; “100” if “hundreds” are mentioned, etc.). For further details on ACLED and for the full data, see www.acleddata.com and [ACLED, 2023](#).

Based on this data, the Austrian Centre for Country of Origin & Asylum Research and Documentation (ACCORD) compiles updates on conflict incidents and publishes them on ecoi.net to offer another access point to the ACLED datasets.

It is advised to employ extreme caution when using fatality numbers.

Assessments of the security situation should not be based solely on quantitative analysis of event data.

Please see ACLED’s additional methodological paper for Myanmar: [ACLED, June 2022](#)

ACLED’s administrative (sub-)divisions of Bago-East and Bago-West, as well as Shan-East, Shan-North and Shan-South have been subsumed under Bago, resp. Shan.

Geographic map data is primarily based on GADM, complemented with other sources if necessary. Incidents are mapped to GADM provinces using the provinces in ACLED data. Province names and borders may differ between ACLED and GADM. Incidents that could not be located are ignored. The numbers included in this overview might therefore differ from the original ACLED data. ACLED uses varying degrees of geographic precision for the individual incidents, depending on what level of detail is reported. Thus, towns may represent the wider region in which an incident occurred, or the provincial capital may be used if only the province is known. Erroneous location data, especially due to identical place names, cannot be fully excluded.

Incidents comprise the following categories: battles, violence against civilians, remote violence, riots/protests, non-violent strategic activities. For details on these categories, please see

- ACLED – Armed Conflict Location & Event Data Project: Armed Conflict Location and Event Data Project Codebook, 2023a
https://acleddata.com/acleddatanew/wp-content/uploads/dlm_uploads/2023/06/ACLED_Codebook_2023.pdf
- ACLED – Armed Conflict Location & Event Data Project: FAQs: ACLED Fatality Methodology, January 2023b
https://acleddata.com/acleddatanew/wp-content/uploads/2023/01/FAQs-ACLED-Fatality-Methodology_2023.pdf
- ACLED – Armed Conflict Location & Event Data Project: Quick Guide to ACLED Data, March 2023c
<https://acleddata.com/resources/quick-guide-to-acled-data/>

Conflict incidents per province

Province	Number of incidents	Number of incidents with fatalities	Number of fatalities
Ayeyarwady	91	4	11
Bago	473	124	489
Chin	119	22	98
Kachin	136	20	82
Kayah	34	9	35
Kayin	145	44	196
Magway	477	140	552
Mandalay	414	110	400
Mon	98	25	79
Naypyitaw	28	4	17
Rakhine	496	84	462
Sagaing	853	159	550
Shan	358	79	235
Tanintharyi	237	71	266
Yangon	93	5	21

Localization of conflict incidents

Note: The following list is an overview of the incident data included in the ACLED dataset. More details are available in the actual dataset (date, location data, event type, involved actors, information sources, etc.). The data's precision varies among the incidents: a town may represent a region, or the provincial capital may be used if the precise location of an incident is unknown. In the following list, the names of

event locations are taken from ACLED, while the administrative region names are taken from GADM data (with the exception of Iraq) which serves as the basis for the maps above.

In **Ayeyarwady**, 91 incidents killing 11 people were reported. The following locations were among the affected: Ah Ywea, Ahthoke, Bogale, Chaung Thar, Danubyu, Dedaye, Einme, Hainggyikyun, Hinthada, Hnget Pyaw Chaung, Ka Nyin Gwa, Kwin Kauk (North), Kyangin, Kyaung Su, Kyaunggon, Kyonpyaw, Lemyethna, Maubin, Myanaung, Myauk San, Myaungmya, Ngathaingchaung, Ngayokekaung, None Kyun, Pantanaw, Pathein, Poe Su Gyi, Pyapon, Saw Pyar, Shar Taw, Shwe Laung Ywar Ma, Shwe Myin Tin, Shwethaungyan, Thabaung, Thaung Gyi Ywar Ma, Wakema, Yae Nant Thar, Yae Sa Khan, Yegyi, Ywar Thit Kone, Zee Hpyu Kyun.

In **Bago**, 473 incidents killing 489 people were reported. The following locations were among the affected: Ah Lel Kyun, Ah Nyar Tan Gyi, Aing Zauk, Aye Mya Thar Yar, Bago, Baw Bin, Baw Di Kone, Chaung Gwa (G), Chaung Ma Gyi, Chaung Nar, Chaung Zauk, Da La Seik, Daik-U, Dar Ku lar (Myanmar), Daung Lu, Daung Ma Nar (Daung Myat Nar), Daung Moet, Doe Nwe, Doe Tan, Don Za Yit, Done Toe, Dwa, Gon Hnyin Tan, Gway Kone, Gyaung Tar, Gyobingauk, Hlay Done, Hlwa Zin, Hman Kone, Hnaw Khin, Hnaw Pin, Hpa Yar La Har, Hpyan Tha Lin, Htan Kone, Htan Pin Chaung, Htantabin, Htoe War Saik, Htwa Ni Kone, Inn Ga Ni, Inn Net (Lower), Inn Taing Kone, Inn Taw Kan, Ka Nyin Kyoe, Kaing Taw Su, Kan Ka Lay, Kan Ka lay, Kan Ni, Kan U, Kant Ni, Kawt Pyin, Khin Gyi, Khin Kant Lant, Khin Tan, Kho Lo, Koke Ko Kone, Kone Tan, Kone Ywar, Kun Ohn, Kun Seik, Kwin Chaung, Kyat Chaung, Kyauk Sa Yit, Kyauk Taing, Kyaukkyi, Kyauktaga, Kyaung Kone, Kyaung Su, Kyet Tet Nyaung Pin, Kyoet Kone, Kyoet Pin Thar, Kyu Inn (East), Kyun Kone, Kyun Taw Kone, Kywe Ma Kaing, Kywe Ta Lin, Kywe Te Kone, Lay Ein Su, Lay Paw Mu, Leik Paw, Leik U Kone, Lein Pin, Lein Pin Wea (Lower), Lel Ma Inn, Let Khan, Let Pan Tone, Letpadan, Lin Lun Pin, Lin Yaw Khin, Ma Gyi Pin, Ma Ma Yan (Lower), Ma Me Gyi, Ma Yan Sein Gyi, Ma Yan Sein Lay, Mei Za Li Kone,

Minhla, Mone, Monyo, Myay War Kone, Myet Ni Kwin, Myo Twin, Nan Za, Nat Ta Lin, Nat Ta Lin Su, Nattalin, Naung Kone, Nga Hpei Inn, Nga Htway Soke, Nga Nwar Seik, Nga Toe Khin (Myanmar), Nwe Kauk, Nyaung Kaing, Nyaung Kone, Nyaung Pin Thar, Nyaung Pin Zin, Nyaunglebin, Oe May Tu, Oke Shit Kone, Oke Shit Pin, Okpho, Oktwin, Padaung, Paukkhaung, Paungde, Pe Thauung, Pein Za Loke Ywar Ma, Penwegon, Phyu, Pi Tauk Kone, Pu Tee Kone, Pu Zun Myaung, Pyan Chi Tet, Pyay, Pyin Ma Pin, Pyin Pon, Pyin Yae Gyi, Ran Na Gar, Saik Tan Khin, San Hpe, Shan Kaing, Shwe Ka Zaung, Shwe Zan Pyayt, Shwedaung, Shwegyin, Si Kauk Pin, Si Son Kone, Sin Ku, Sin Lu, Sin Paik (Ah Nauk Su), Sin Swei Myaung, Ta Laing Khin, Taung Boet Gyi, Taung Khin, Taung Su, Taungoo, Taw Kyaung Pauk (Lower), Taw Kyaung Pauk (Middle), Taw Wi Ywar Ma, Tein Myoke Ywar Ma, Tha Hpan Pin, Tha Hpan Zin, Tha Min Inn Kone, Tha Nat Kwin, Tha Yet Hpyu Kan, Tha Yet Kone, Tha Yet Ta Pin (South), Than Seik Ywar Ma, Thar Yar Kone, Thar Yar Kone (Hmaw Inn), Thauung Pu, Thayarwady, Thea Kaw, Thea Kone, Thea Kye Gyi, Thein Kone, Thet Kei Kone, Thin Taw, Thin Taw Yoe, Thonse, Ti Tut Ywar Ma, U Yin Gyi (Ah Nauk Su), Waing, Waw, Wet Che, Wet Htee Kan Ywar Ma, Wet Lar Taw (Myanmar), Wet Tu, Yae Le (Kayin), Yae Oe Sin, Yae Twin Kone, Yae Twin Kone (Lower), Yae Twin Kone Ywar Ma, Yay Le (Myanmar), Yedashe, Yin Mu Kone, Yin Taik Kone, Yin Taik Kwin (North), Yone Chaung, Yone Daing, Ywar Gyi Inn, Ywar Thit, Ywar Thit Kone, Zayyawadi, Zigon.

In Chin, 119 incidents killing 98 people were reported. The following locations were among the affected: Aye Sa Khan, Cerhmun, Chuncung, Congthia, Falam, Hakha, Har Lar Wa, Hnone Bon, Kanpetlet, Lumte, Mindat, Relsing, Tedim, Thantlang, Wet Ma.

In Kachin, 136 incidents killing 82 people were reported. The following locations were among the affected: Bhamo, Chipwi, Gway Htu, Hko Kyin, Hku Li, Hpakant, Hpar Pyin, Hpi Maw, Hseng Taung (Ywar Haung), Kan Paik Ti, Khaunglanphu, Konlaw, La Gway, La War, Lai Zar, Long Hkin, Man Wein, Mansi, Mohnyin, Momauk, Myitkyina, Nam Hlaing, Nam Mun, Nam War, Nu

Zung Baung, Pangwa, San Kar, San Kywei, Shan Keng, Tar San, Tsawlaw, Waingmaw, War Shawng.

In Kayah, 34 incidents killing 35 people were reported. The following locations were among the affected: Bawlake, Chi Kweit, Demoso, Hpasawng, Kone Sut, Kyauk Gyi (North), Lel Htwea Ywar Thit, Lin Hpon (Lower), Loikaw, Noe Koe San Pya, Pe Kinn Kaw Khu, Shadaw, Tha Yet Pin.

In Kayin, 145 incidents killing 196 people were reported. The following locations were among the affected: Ah Nan Kwin, Baw Kyoet Lel, Daw Hpyar (Kayin Su), Hlaing Kwei, Hlaing Wa, Hlaingbwe, Hlut Shan, Hpa Lu Gyi, Hpa Lu Lay, Hpa-An, Hpapun, Hpayarthonesu, Htee Khaing, Ka Maing (Ka Mar Inn) Kone, Ka Taing Ti, Kawkareik, Kawt Bein, Kawt Nwe, Ku Seik, Kya Khat Chaung, Kyainseikgyi, Kyauk Kwin, Kyondoe, Lay Kay Kaw, Ma Htaw, Myauk Kyar Inn, Myawaddy, Nan Khwee, Noet Hpaw Htee, San Hpa Ree, Sin Swei, Ta Dar U, Ta Khun Taing, Ta Tan Ku, Taung Kyar Inn, Than Pu Yar, Thandaung, Thandaunggyi, Thay Baw Boe, War Tho Kho, Waw Lay Myaing (Waw Lay), Win Htaung, Win Sein (Ywar Gyi), Yae Kyaw Gyi, Yae Pu Gyi, Yan Koke, Ywar Thit.

In Magway, 477 incidents killing 552 people were reported. The following locations were among the affected: Ah Kyi Ban, Ah Lel Kone, Ah Nauk Ka Hpyu, Ah Shey Chauk Kan, Aing Ma, Aing Pauk Kone, Aunglan, Baw Pyin, Bone Baw, Chaing, Chan Thar Gyi, Chan Yar, Chauk, Chauk Taung, Daung Sar, Dee Doke Kwin, Gangaw, Goke Gyi, Gon Hnyin Nwe, Gway Cho, Hlay Khoke, Hnaw Kone, Hpa Lan Ma, Hpa Lan Oh, Hpaung Kyaung, Hpet Taw Yae, Hpone Kan, Htan Ma Kauk, Htan Se Pin, Htan Ta Pin, Htein San, In Pin, Ka Dan, Ka Ni, Kaing, Kaing Ma Gyi, Kamma, Kan, Kan Beit, Kan Chaung, Kan Gyi, Kan Kone, Kan Lay Kone, Kan Ni, Kan Oe, Kan Thar, Kan Thit, Kan Thit Kone, Kayin Ma San, Khin Ba Lu, Khin Shey (Taung Su), Khon Taing Kyin, Khway Ah Twin, Kin, Kone Gyi, Ku Lar Shin, Kun, Kyan Taw, Kyar Khe, Kyauk Hpyar Lel, Kyauk Me, Kyauk Se, Kyauk Ta Gar, Kyauk Tan, Kyaukhtu, Kyin, Kyoet Wa, Kyun Khon

Thar, Kyun Nyo, Kyun Taing, Kywe Chan, Lar Poet, Le Bu, Lel Kyin Yoe, Lel Ma, Let Htoke Taw, Let Pan, Let Se, Lin Ka Taw, Lin Zin, Lon Chon, Lon Haw, Ma De, Ma Gyi Kone, Ma Gyi Lay Pin, Ma Gyi Yon, Magway, Me Za Li, Min, Min Kan (North), Minbu, Mindon, Minhla, Moe Kaung, Myaing, Myauk Khin Yan, Myauk Pyin, Myay Char, Myin Kyun, Myin Te Gyi, Myin Zar, Myit Chay, Myothit, Na Ywe Taw (East), Nan Kyu, Nat Hnyun, Nat Pay, Natmauk, Nay Yin, Ngape, Ngwe Thaung, Ni Pa Say Taw, Nwe Ni, Nyaung Gyt Pin, Nyaung Haung, Nyaung Pin Kwin, Nyaung Pin Waing, Nyaung Zauk, Oe Byin Me, Oh Yin, Oke Hla, Pa Khan Gyi, Pa Laung, Pakokku, Pan Nyo, Pan San, Pan Taing Chon, Pauk, Paung Tei, Pay Hnyin, Peik Si, Pwintbyu, Pyaung, Pyayt Aing, Pyin Wa, Sa Bay (East), Sa Bay (Middle), Sa Par Hmyaw, Saing Du, Salin, San Gyi, San Ka Lay, San Kan Gyi, San Ma Gyi, Sat Si Taung (Sat Si), Saw, Se Kan, Se Taw, Seikphyu, Shone Shi, Shwe Bo, Shwe Bo Ywar Thit, Shwe Bon Thar, Shwe Chaung, Shwe Kyin Kan, Shwe Pan, Si Zwe, Sidoktaya, Sin Lu (North), Sin Lu (South), Sin Min, Sinphyukyun, Son Ma Gyi Pin, Sun Tet, Ta Nyaung, Ta Paung, Ta Yaw Kaing, Taung Khin Yan, Taung Pyin, Taungdwingyi, Tay, Tha Hmone Kone Gyi, Tha Hpan Kaing, Tha Man Ta Poet, Tha Pyay Aye, Tha Yet Chin, Tha Yet Kan, Tha Yet Kone, Tha Yet Kwa, Tha Yet Lay Pin, Than Kone, Than Pu Yar Khon, Thar Si, Thayet, Thea Taw, Thee Chauk, Thin Taw, Thit Cho Kone, Thit Khaik Taung, Tilin, Tin Gat, Twin Ma, U Yin (South), War Kyun Kwin, Wet Choke, Wet Kyone, Wet Poke, Wun Ya, Yae Lar Gyi, Yae Lar Lay, Yae Myet, Yae Shin, Yae Shin Ma, Yar Gyi Pyin, Yenangyaung, Yesagyo, Yint Ye, Yint Ye Chaung, Ywar Ma, Ywar Si, Ywar Thar Aye, Ywar Thit, Ywar Thit Kone, Zar Haw, Zee Hpyu Kone, Zee Kone, Zee Pyar, Zee Taw.

In **Mandalay**, 414 incidents killing 400 people were reported. The following locations were among the affected: Amarapura, Auk Taung Kaing, Aung Chan Thar, Aung Pan Kone, Aung Tha Pyay, Aung Thar, Aungmyaythazan, Aye, Aye Kyun, Bagan, Chanayethazan, Chanmyathazi, Chay Say, Daing Kaung Kone, Daing Lel, Dar Kyun, Daung Kyun, Daunt Boe, Done Kone, Du La Bo, Gant Gar, Hin Thar Kone, Hta Naung Pin Le, Htan Chauk Pin, Htan Pin Kone, Htan Taw Kone, Htan Zin (North), Htee Taw Moe, Htein Kan Gyi, Htein Pin Sauk, Ka

Daung, Ka Kye, Ka Nar (Kan Nar), Kan Hnaung, Kan Hpyu, Kan Ni, Kan Swei, Khet Lan, Kin, Koe Pin, Koke Ke, Kone, Kone Paw Net, Kone Tan Gyi, Kone Tan Lay, Ku, Ku Taw, Kun Ohn, Kun Saik, Kya Oh, Kyat Pyin, Kyauk Gyi, Kyauk Hpyu, Kyauk Kan, Kyauk Kone, Kyauk Oe, Kyauk Pyin Kan, Kyauk Pyoke, Kyauk Ta Dar, Kyaukpadaung, Kyaukse, Kyaung Oh, Lel Thit, Let Kaung Gyi, Let Wea, Lint Kone, Lone Taw, Ma Yoe Kone, Madaya, Mahaangmyay, Mahlaing, Mandalay, Mee Pauk, Meiktila, Min Kone, Min Nay Kone, Moe Gyoe, Moe Hnaung Khin, Moe Taung, Mogoke, Mway Hin Thar, Mway Ku Toet Seik, Mway Pu Thein, Mway Sin Kone, Mway Ta Laing, Mway Thit Taw Yone, Mya Kan, Mya Kan Thar, Myaing Thar, Myauk Kone, Myauk Kyun, Myay Hpyu Kone, Myet Shu, Myingyan, Myitnge, Myo Hla, Myo Kone, Na Be Myit, Natogyi, Ngan Myar, Ngathayauk, Ngazun, Nge Toe, Nyaung Lay Pin, Nyaung Pin, Nyaung Pin Hla, Nyaung-U, Pa Leik (Ywar Ma), Patheingyi, Po Wa (North), Put Taing, Pyar, Pyawbwe, Pyigyitagon, Pyin Si, Sa Kyin, San Pya, Sauk Chon Pauk, Se Pei, Sein Pan Kone, Shan Te, Shin Hla (Middle), Shwe Boe Gyi, Si Mee Khon Town, Si Taing Kan, Sin Hpyu, Sin Hpyu Kone, Sin Kyun, Sit Kone, Ta Dar U, Ta Laing Yat (Ywar Thit), Ta Mar Kan, Tada-U, Tan Saung, Taung Se, Taungtha, Taw Pu, Taw Pyar, Tha Hpan Daunt, Tha Hpan Thar, Tha Kyin, Tha Man Taw, Tha Min Chan, Tha Min Twin, Tha Yet Kaung Pin, Thabeikkyin, Thea Kyun, Thea Taw, Thi La Kone, Thit Yon, Thu Htay Kone, Ton Kone, Twin Nge, U Dein, Wa Thon Da Ra, War Lone Pyun, Waw Su, Wet Lu (East), Wun Su, Wundwin, Yae Nyar U, Ye Pa Daing, Yit Kan, Yoe, Yon Htoe, Ywar Bo (South), Ywar Gyi, Ywar Thar Aye, Ywar Thar Yar, Ywar Thit, Ywar Thit Kone, Za Kyan, Za Yat Gyi.

In **Mon**, 98 incidents killing 79 people were reported. The following locations were among the affected: Ah Bit, Ah Pa Loi, Ah Sin, Ahr Yu Taung, Aye Ka Bar, Bilin, Chaung Taung, Hnit Kayin, In Ga Po, Kawt Htin, Kone Myint Thar, Kya Thaung Seik, Kyaik Ywea, Kyaikto, Kyaung Ywar, Kyon Laung, Kyun Kone, Ma Yan Chaung Kwar Yi Ywar Thit, Mawlamyine, Mawt Ka Nin, Moke Pa Lin, Myay Ni Kone, Myo Haung, Nyaung Kone Gyi, Oke Ta Dar, Paw Taw Mu Ywar Gyi, Pein Hne Kone, Pyin Ka Doe Kone, San Pya, Seik Kyun (North), Sin Ywar,

Son Nant Thar, Ta Kay Chaung Hpyar, Taung Sun, Thanbyuzayat, Thaton, Thea Kone, Thein Za Yat, Thone Gwa, Win Ka Law, Ye, Zee Hnit Pin.

In **Naypyitaw**, 28 incidents killing 17 people were reported. The following locations were among the affected: Aye Lar, Det Khi Na Thi Ri, Gway Tauk Yoe, Kyan Hpo Su, Kyun U, Ma Gyi Kone, Naung Bo (Ywar Ma), Nay Pyi Taw, Oke Ta Ra Thi Ri, Pi Tauk Kone, Poke Ba Thi Ri, Pyinmana, Sin Thay, Tatkon, Tha Kyar Set, Tha Nat Pin Seik (East), Thar Yar Aye, Thu Htay Kyun, Za Bu Thi Ri, Zee Hpyu Pin.

In **Rakhine**, 496 incidents killing 462 people were reported. The following locations were among the affected: (Du) Nyaung Pin Gyi, Ah Htet Ba Win, Ah Lel, Ah Lel Chaung, Ah Pauk Wa, Aing Din Ywar Thit, Ann, Aung Ba La, Aung Min Ga Lar (NaTaLa), Aung Zay Ya (Nyein Chan Yay), Baw Di, Be Inn, Buthidaung, Chaung Thar, Chaung Thone Gwa, Chin Kone, Chin Kwin, Daing Gyi, Dei Boke, Don, Dway Cha, Gant Gaw Taung, Gone Nar, Gwa, Gway Taing, Gyai Kauk, Gyoe Gyar Kwin, Hla Poe Khaung, Hman Ni, Hmyaw Chaung, Hpar Wut Chaung (Ywar Thit), Hpone Nyo, In Kone, Ka Nyin Chaung, Kaing Gyi (Rakhine), Kaing Khon, Kan Day, Kan Dee, Kan Deik, Kan Pauk, Kan Pyin, Kan Pyin Thar Si, Kan Thar Yar, Kha Maung Taw, Kha Maung Tone, Kha Yaing, Kha Yay Myaing, Kha Yu Chaung, Khaung Laung Du, Kin Pon, Kin Taung, Ku Toet Lay, Kun Taung, Kyat Yae San, Kyauk Gyi, Kyauk Hlay Kar, Kyauk Pa Sat, Kyauk Pan Du, Kyaukpyu, Kyauktaw, Kyaung Hpyu Kwin, Kyaung Taung, Kyway Chaing, Laung Kyoe, Laung Sat, Leik Ya, Maung, Maungdaw, Me Let Maung, Me Sa Li, Mee Chaung Htoe, Mee Taik, Min Te, Myebon, Myo Thu Gyi, Nan Chaung (Lower), Nat Taung Pyin, Nga Khu Ya, Nga Let Kya, Nga Pyl Kyun (Middle), Nyaung Chaung, Nyaung Chay Htauk, Nyo Yaung Chaung, Pa Day Thar, Pan Hpe Chaung, Pan Ni Lar, Pat Kwayt, Pauk Inn, Pauktaw, Pein Hne Kone, Ponnagyun, Pyar Lay Chaung, Pyar Thar, Pyaung Chaung, Pyin Hpyu, Pyin Taw Gyi, Ramree, Rathedaung, Sa Par Htar, Sar Chet, Sar Chet Gyi, Sar Chet Ka Lay, Sat Si, Sat Thwar, Shwe Baho, Shwe Taung Thar, Shwe U Kwin, Shwe Yin Aye, Shwe Zar (West), Si Pin, Sin Gaung,

Sin Swei Ya, Sittwe, Taing Kyoe, Tan Hlwe Ywar Ma, Tat Taung, Taung Hpu, Taung Nyo, Taung Pyo, Taung U Maw, Tha Pyu Chaung, Tha Yet Taw, Thandwe, Thea Khe Chaing, Thea Khon, Thein Tan, Thin Chi Kaing, Thit Ngoke To, Tin Ma, Tin Taw, Toungup, Udaung, Wa Tein, War Bo, Ya Da Nar Myaing (Lower), Ya Haing Ku Toet, Yae Chan Pyin, Yae Kyaw, Yan Khaw, Yat Thar Ywar Thit, Yoe Ta Yoke, Ywar Thit Kone, Zee Kaing, Zee Khon, Zee Kone.

In **Sagaing**, 853 incidents killing 550 people were reported. The following locations were among the affected: Ah Lel Bon, Ah Lel Khon, Ah Shey See, Ahr Lar Kat Pa, Aing Ma, Aing Paung Chaung, Aung Chan Thar, Aung Pon, Aung Thar, Aung Thar Yar, Ayadaw, Ban Si, Banmauk, Boe Min Gyi Kin, Bu Gyi (North), Bu Kone, Budalin, Chaung Ma (East), Chaung Nar, Chaung Son (South), Chaung-U, Chi Par (North), Daung Gyi, Doe Nwe, Gway Pin Kyin, Gway Pin Taw, Hkamti, Hlut Taik, Hlwe Te, Hna Ma Sar Yit, Hnaw Nyaung Pin, Hnaw Pin Yoe, Homalin, Hpa Lon Chaing, Hpo Kone, Htan Taw, Hto Mar, In Taing (North), Indaw, Inn Lel Gyi, Inn Pat, Inn Pu Htoe, Inn Te, Ka La Zin, Kaing Ma, Kale, Kalewa, Kan Gyi, Kan Pauk, Kan Pyar, Kan Swei, Kan Thit Ywar Ma, Kanbalu, Kani, Kar Boe, Katha, Kawlin, Kha Meik, Kha Paung Kyaing, Khin Mun, Khin-U, Kin Mun Taw, Kin Pun Chon (Kin Mun Chon), Kin San, Koe Myo, Koke Ko Kone, Kone Yoe, Ku Taw, Kyauk Hlay Kar, Kyauk Hpu, Kyauk Oe (North), Kyauk Taing, Kyauk Yit (East), Kyaung Kone, Kyee Oke, Kyet Yoe Kone, Kyi Kone, Kyi Su, Kyo Htein, Kyun Taw Kone, Kyunhla, Kyway, Kywe Thay Chaung, Kywei Pon, Lan Son, Leik Sin Taung, Lel Di, Let Khoke Pin, Let Pa Taung, Let Pan (East), Let Pan Taw, Let Pu Kan, Let Se, Ma Au, Ma Daung, Ma Gyi Boke, Ma Gyi Kone, Ma Htu, Ma Htu Lay, Man Hon, Man Sein, Maung Htaung, Maw Lu, Min Kone, Min Kun, Min Taing Pin, Mingin, Mon Hla, Mon Oh, Mon Taing Pin, Mon Yway, Monywa, Mya Kan Thar, Myaik, Myauk Chun, Myauk Kyi, Myaung, Myay Ne, Myin Chin, Myin Daung, Myin Se, Myin Thar, Myinmu, Myit Thar, Myo Gyi Kone, Na Bet Gyi, Naint Ban Wa, Nan Kaung Kaung, Nan Maw Kei, Nan Mun Tar, Nar Maw, Nat, Nat Gyi, Nat Myaung, Nat Yae Kan, Naung Meit Lon, Naung Po Aung, Nga Pu Yin, Nga Yoke Ton, Ngar Shan, Ngar Toet, Ngar Yei, Ngwe Twin, Nyaung Hpyu Pin,

Nyaung Kan, Nyaung Kone, Nyaung Pin Gyi, Nyaung Pin Seik, Nyaung Pin Zin, Nyaung Zin Gyi, Oe Bo, Oh Ma, Ohn Na Paung, Ohn Taw (North), Oke Kan, Oke Shit Kan, Pa Du, Pa Laing, Pale, Pan Kone (North), Paungbyin, Pay Kone, Pe Pyit Taw (West), Pin Sein Khin, Pinlebu, Pu Yit Kone (South), Sa Bai Nant Thar, Sa Par Twin, Sagaing, Saing Pyin, Salingyi, Sar Taung, Se Taw, Se Wa Ywar Haung, See Ma, Shan Seik, Shein Ma Kar, Shwe Chaung Lel, Shwe Hlay, Shwe Twin, Shwebo, Si Par, Si Son, Sin Aing Ma, Son Kone, Su Lay Kone, Swea Hle, Ta Ein Te, Ta Laing, Ta Nei, Ta Pone, Ta Yaw Taw, Tabayin, Tamu, Tat Thit, Taung Yar Seik, Taung Yin (North), Taw Pu (North), Taze, Tei Thee Taw, Tet Hlaing, Tha Khut Ta Nei, Tha Le Bar, Tha Pyay Pin, Tha Pyay Thar, Tha Yet To Yoe, Than Pin Kan, Than Thei, Thar Hpan, Thar Si, Tin Tein Yan (Ywar Ma), Tin Thar, U Yin, Wan Pyayt, Wet Toe (North), Wet Toe (South), Wetlet, Wunt Ton, Yae Aye, Yae Hpyu, Yae Kyi Pin, Yar Gyi, Ye-U, Yinmarbin, Ywar Koe Gyi, Ywar Ma, Ywar Ma (North), Ywar Pu Gyi, Ywar Shey, Ywar Thar Gyi, Ywar Thit Kone, Za Yat Kone, Zee Hpyu Kone, Zee Kone, Zee Pauk, Zee Taw.

In Shan, 358 incidents killing 235 people were reported. The following locations were among the affected: Ayetharyar, Ban Mat, Ban Mat (Kyaung Nar), Bant Bway, Baw Day, Bi Kin, Byein Long (Kachin), Chaung Pong, Ei Naing, Gant Gaw, Hkawng Ei (North), Hkawng Mong Thit, Ho Hko (North), Ho Hpei, Ho Mein, Ho Peik, Ho Ya Ywar Ma, Hopong, Hpa Yar Gyi Kone, Hsaik Hkawng, Hsaik Hkawng Zay Kone, Hsam Ma Hse, Hsan Kar, Hsant Swea, Hseng Hkun, Hseni, Hsi Hson, Hsihseng, Hsin Tawng, Hsipaw, Hta Min Pawng, Hti Hant Tar, Inn Hpo, Inn Waing, Ka Thea, Kan Gyi, Kan Kaing Lel Htun, Kar La, Kawng Haw, Kengtawng, Kone Gyi Ywar Ma, Kone Paw, Kone Son, Ku Lar Kwe, Kunlong, Kutkai, Kyauk Gu Ywar Ma, Kyauk Ku Pyin, Kyauk Mee Hkat, Kyaukme, La Ei, Laihka, Lashio, Laukkaing, Lawksaw, Len Hkan (East), Loi Hsar, Loi Keng, Loi Long, Long San, Ma Gyi Yae, Mae Han, Man Chet, Man Li, Man Ping, Mant Mai, Maw Hit, Mawkmai, Min Pa Laung, Moe Bye, Monekoe, Monghsat, Mongkaing, Mongnai, Mongngawt, Mongsi, Mongton, Mongyai, Muse, Myo Thit, Nam Hkaik, Nam Hpar Mu, Nam Hpat Kar (Ho Pong + Pang Sa Lorp), Nam Hu (Gaw Ra Khar), Nam Hu (Koe Kant Htar Par Taw), Nam

Lan, Nam Maw, Nam Ngone, Nam Pawng, Namhkan, Namhsan, Nar Pong, Nar Sho, Nar Tee, Nat Inn, Nawng Kaw Gyi, Nawng Leik, Nawng Woe, Nawngkhio, Nwar Ban Gyi, Ohn Ma Thee, Ong Ma Hkar, Pang Hseng (Kyu Koke), Pang Long Ywar Ma, Pang Pwe, Pang War, Pang Yang Hkar, Pekon, Pinlaung, Pu Chei (Lower), Sa Bai Kone, Tachileik, Tangyan, Tar Shwe Htan, Taung Hteik, Taung Shey, Taunggyi, Tawng Hkam, Tha Yet Cho, Than Lwin, Thea Khaw, Thein Kone, Ton Hsint, Ton Law, Tway Pu, Wan Nar, Wan Sang, Ya Da Nar Pon, Yae Hla, Yae Mawng Tan, Yae Pu, Yae Win, Ywangan.

In Tanintharyi, 237 incidents killing 266 people were reported. The following locations were among the affected: 19 Maing, 22-Maing, Auk Yae Hpyu, Ban La Mut, Ban Law, Ban Law (East), Ban Pyayt, Chauk Chaung, Chaung Hnit Pauk, Chaung Mon, Dawei, Gawt Inn, Hton Kha, Inn Shey Kone, Inn Zauk, Ka De, Ka Det Nge Htein, Ka Naing Dar, Kan Pauk, Kawthoung, Khamaukgyi, Khan Ti, Koe Inn, Kyauk Ni Maw, Kyauk Peik, Kyaung Neint, Kye, La Maing Kawt, La Thar, Launglon, Lel Taung Yar, Lel Thit (East), Ma Li Wan, Mar Ran Nawt, Maung Ma Kan, Maung Mei Shaung, Maw Taung, Maw Tone (East), Maw Tone (West), Me Nei Oe, Mee Laung Chaung, Min Yat, Mu Du (East), Myeik, Nyaung Pin Kone, Nyin Htwe, Nyin Maw, Oke Tu, Pa Kar Ri, Pa Khat, Palaw, Pan Pyin, Pein Shaung, Peit Taing, Pyin Wun, Sar Myein Taung, Seik Hpu, Set Taw Yar, Shin Moke Tee, Sit Pyea, Son Sin Hpyar, Ta Ku, Ta Moke Chone, Ta Po, Tanintharyi, Taung Khaung Laung, Taung Yar Kan, Tha Yet Hnit Khwa, Thayetchaung, Thein Daw Ywar Ma, Thin Gan Taw, Thin Kyun, Thit Hla Taw, Tone Byaw Gyi, Wa Kone, War Yit Myan Mar Su, Yae Hpyu, Yan Hpo, Yan Taung, Yebyu, Yin Boke, Za Har, Za Wea, Za Yat Seik, Zar Di.

In Yangon, 93 incidents killing 21 people were reported. The following locations were among the affected: Ah Pyin Pa Dan, Auk Kyaung, Bahan, Dagon, Dagon Myothit (North), Dagon Myothit (Seikkan), Dagon Myothit (South), Hlaing, Hlaingtharya, Hlaw Kar, Hmawbi, Htaukkyant, Insein, Kyeemyindaing, Kyet Hpyu Kan, Mayangone, Mingaladon, North Okkalapa, Sanchaung, Shwepyithar, South Okkalapa, Tamwe, Thaketa, Than Day Pin, Thingangyun,

Yangon, Yankin.

Sources

- ACLED – Armed Conflict Location & Event Data Project: ACLED Methodology and Coding Decisions around Political Violence in Myanmar, June 2022
<https://www.acleddata.com/download/35255/>
- ACLED – Armed Conflict Location & Event Data Project: Armed Conflict Location and Event Data Project Codebook, 2023
https://acleddata.com/acledatanew/wp-content/uploads/dlm_uploads/2023/06/ACLED_Codebook_2023.pdf
- ACLED – Armed Conflict Location & Event Data Project: Asia-Pacific, 7 February 2025
https://acleddata.com/curated-data-files/#Asia-Pacific_2018-2025_Feb07 (visited on 17 February 2025)
- CIA – U. S. Central Intelligence Agency: China and India, 2006
<http://hdl.loc.gov/loc.gmd/g7820.ct002746>
- CIA – U. S. Central Intelligence Agency: Bhutan Administrative, 2012
https://www.cia.gov/library/publications/resources/cia-maps-publications/map-downloads/Bhutan_Admin.pdf
- GADM – Global Administrative Areas: gadm36_levels.shp, Version 3.6, 6 May 2018a
http://biogeo.ucdavis.edu/data/gadm3.6/gadm36_levels.shp.zip
- GADM – Global Administrative Areas: gadm36_MMR.shp.zip, Version 3.6, 6 May 2018b
http://biogeo.ucdavis.edu/data/gadm3.6/shp/gadm36_MMR.shp.zip

- Natural Earth: Admin 0 – Breakaway, Disputed Areas, Version 3.1.0, undated
http://www.naturalearthdata.com/http://www.naturalearthdata.com/download/10m/cultural/ne_10m_admin_0_disputed_areas.zip
- Smith, Walter H. F. and Wessel, Paul: Global Self-consistent Hierarchical High-resolution Geography (GSHHG), Version 2.3.4, 1 May 2015
<https://www.ngdc.noaa.gov/mgg/shorelines/data/gshhg/latest/>

Disclaimer

ACLED data undergoes several rounds of review before publication and is continually updated as new events are added and existing events are revised as new information becomes available. Updates in ACLED's datasets will not necessarily be reflected in ACCORD's reports if the update occurs close to or after the latter's publication. Changes in the sources used by ACLED to collect incident data might affect the comparability of data over time. For more information on ACCORD's products based on the data, please see the [ecoi.net blog posts tagged with "ACLED"](#). The lack of information on an event in this report does not permit the inference that it did not take place. The boundaries and names displayed do not imply endorsement or acceptance by the Austrian Red Cross.

Cite as

- ACCORD – Austrian Centre for Country of Origin & Asylum Research and Documentation: Myanmar, fourth quarter 2024: Update on incidents according to the Armed Conflict Location & Event Data Project (ACLED), 17 February 2025