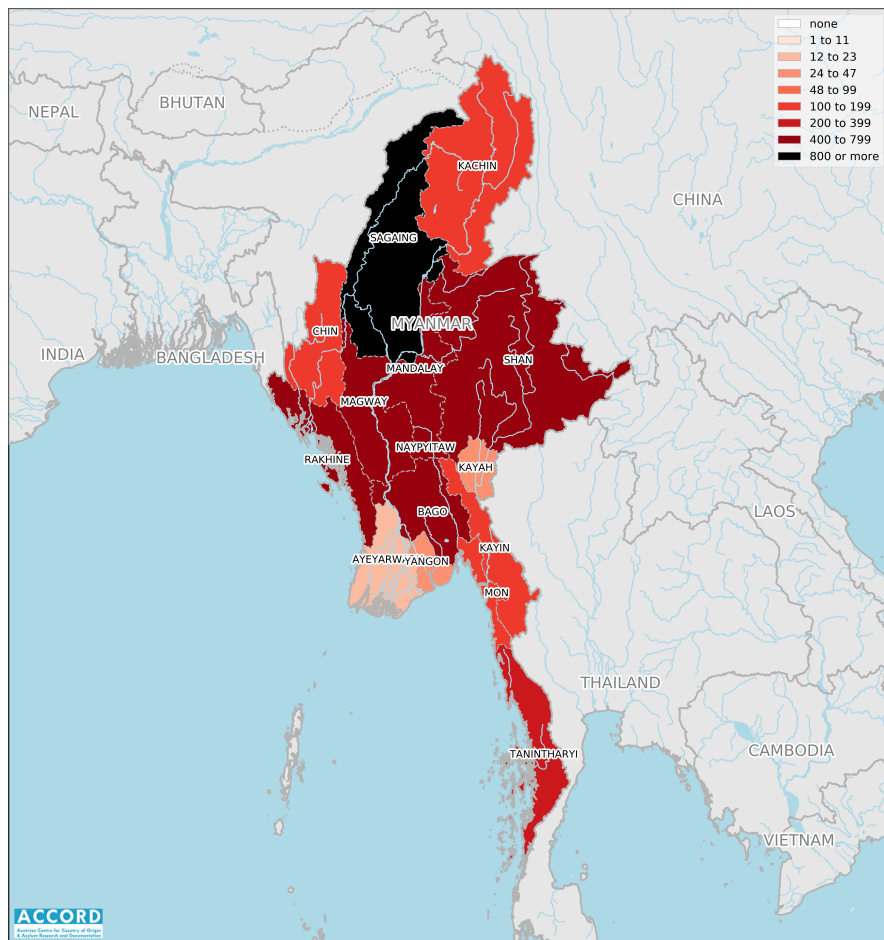


MYANMAR, YEAR 2024:

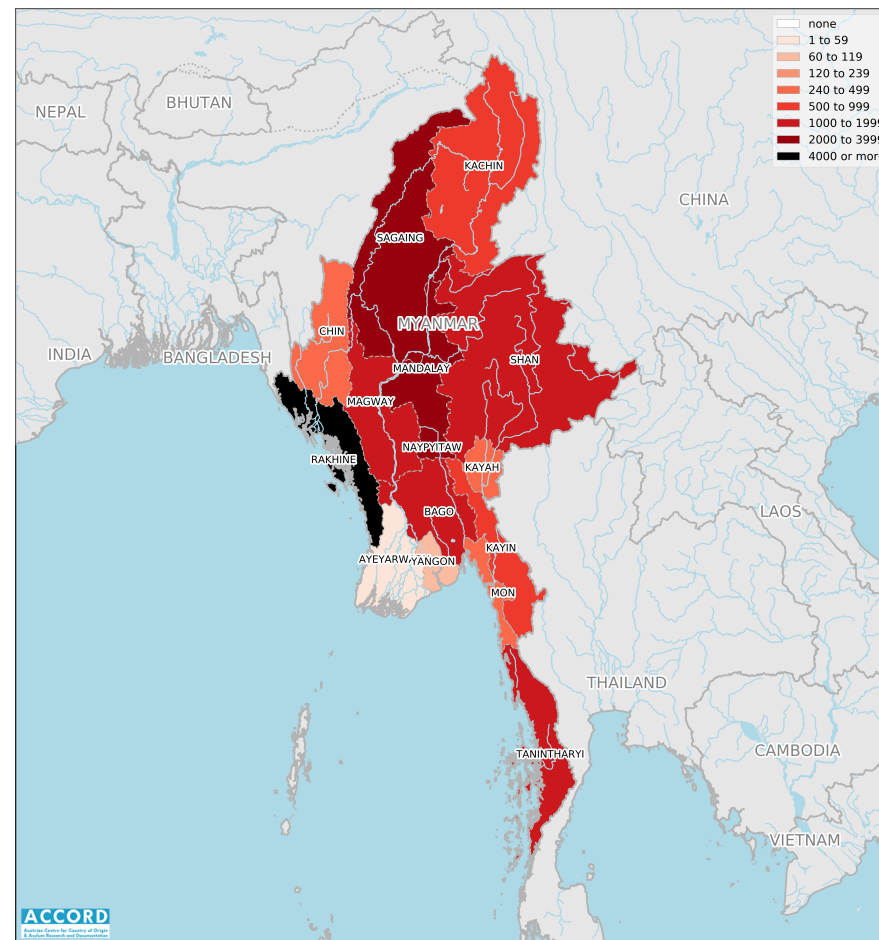
Update on incidents according to the Armed Conflict Location & Event Data Project (ACLED)

compiled by ACCORD, 17 February 2025

Number of reported incidents with at least one fatality



Number of reported fatalities



National borders: [GADM, 6 May 2018a](#); administrative divisions: [GADM, 6 May 2018b](#); Bhutan/China border status: [CIA, 2012](#); China/India border status: [CIA, 2006](#); geodata of disputed borders: [GADM, 6 May 2018a](#); [Natural Earth, nodate](#); incident data: [ACLED, 7 February 2025](#); coastlines and inland waters: [Smith and Wessel, 1 May 2015](#)

Contents

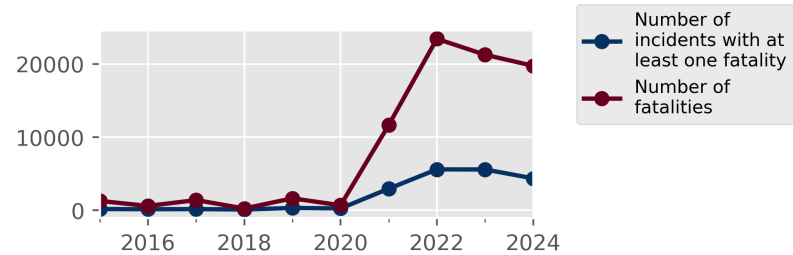
Number of reported fatalities	1
Number of reported incidents with at least one fatality	1
Conflict incidents by category	2
Development of conflict incidents from 2015 to 2024	2
Methodology	3
Conflict incidents per province	4
Localization of conflict incidents	4
Disclaimer	16

Conflict incidents by category

Category	Number of incidents	Number of incidents with at least one fatality	Number of fatalities
Explosions / Remote violence	5977	1548	4650
Battles	5061	2035	13575
Strategic developments	2752	5	9
Violence against civilians	1716	784	1502
Protests	1205	1	5
Total	16711	4373	19741

This table is based on data from ACLED (datasets used: [ACLED, 7 February 2025](#)).

Development of conflict incidents from 2015 to 2024



This graph is based on data from ACLED (datasets used: [ACLED, 7 February 2025](#)).

Methodology

The data used in this report was collected by the Armed Conflict Location & Event Data Project (ACLED). Based on a variety of sources, ACLED collects data on reported conflict events around the world and provides publicly available event-based datasets. ACLED data contains information on the event type, the date, location, involved actors, and other characteristics of the incident. Most of the data collected by ACLED is gathered based on publicly available reports. As information on fatalities is subject to bias and can vary between sources for the same event, ACLED employs “the most conservative and reliable fatality estimate available”. ACLED uses the reports’ context to estimate fatalities for events with reported fatalities for which the exact number is unknown (“3” or “10” for plural fatalities, depending on the context; “100” if “hundreds” are mentioned, etc.). For further details on ACLED and for the full data, see www.acleddata.com and [ACLED, 2023](#).

Based on this data, the Austrian Centre for Country of Origin & Asylum Research and Documentation (ACCORD) compiles updates on conflict incidents and publishes them on ecoi.net to offer another access point to the ACLED datasets.

It is advised to employ extreme caution when using fatality numbers.

Assessments of the security situation should not be based solely on quantitative analysis of event data.

Please see ACLED’s additional methodological paper for Myanmar: [ACLED, June 2022](#)

ACLED’s administrative (sub-)divisions of Bago-East and Bago-West, as well as Shan-East, Shan-North and Shan-South have been subsumed under Bago, resp. Shan.

Geographic map data is primarily based on GADM, complemented with other sources if necessary. Incidents are mapped to GADM provinces using the provinces in ACLED data. Province names and borders may differ between ACLED and GADM. Incidents that could not be located are ignored. The numbers included in this overview might therefore differ from the original ACLED data. ACLED uses varying degrees of geographic precision for the individual incidents, depending on what level of detail is reported. Thus, towns may represent the wider region in which an incident occurred, or the provincial capital may be used if only the province is known. Erroneous location data, especially due to identical place names, cannot be fully excluded.

Incidents comprise the following categories: battles, violence against civilians, remote violence, riots/protests, non-violent strategic activities. For details on these categories, please see

- ACLED – Armed Conflict Location & Event Data Project: Armed Conflict Location and Event Data Project Codebook, 2023a
https://acleddata.com/acleddatanew/wp-content/uploads/dlm_uploads/2023/06/ACLED_Codebook_2023.pdf
- ACLED – Armed Conflict Location & Event Data Project: FAQs: ACLED Fatality Methodology, January 2023b
https://acleddata.com/acleddatanew/wp-content/uploads/2023/01/FAQs-ACLED-Fatality-Methodology_2023.pdf
- ACLED – Armed Conflict Location & Event Data Project: Quick Guide to ACLED Data, March 2023c
<https://acleddata.com/resources/quick-guide-to-acled-data/>

Conflict incidents per province

Province	Number of incidents	Number of incidents with fatalities	Number of fatalities
Ayeyarwady	266	18	27
Bago	1493	474	1886
Chin	460	100	328
Kachin	888	166	835
Kayah	142	47	311
Kayin	523	158	993
Magway	1536	557	1933
Mandalay	1700	573	2165
Mon	588	171	478
Naypyitaw	68	11	85
Rakhine	2075	429	4336
Sagaing	3763	905	3185
Shan	1825	412	1812
Tanintharyi	1012	319	1280
Yangon	372	33	87

Localization of conflict incidents

Note: The following list is an overview of the incident data included in the ACLED dataset. More details are available in the actual dataset (date, location data, event type, involved actors, information sources, etc.). The data's precision varies among the incidents: a town may represent a region, or the provincial capital may be used if the precise location of an incident is unknown. In the following list, the names of

event locations are taken from ACLED, while the administrative region names are taken from GADM data (with the exception of Iraq) which serves as the basis for the maps above.

In **Ayeyarwady**, 266 incidents killing 27 people were reported. The following locations were among the affected: Ah Ywea, Ahthoke, Be Pyar, Bogale, Chaung Thar, Danubyu, Dedaye, Einme, Hainggyikyun, Hinthada, Hnget Pyaw Chaung, In Pin, Inn Ma, Ka Nyin Chaung, Ka Nyin Gwa, Kangyidaunt, Kwin Baw, Kwin Kauk (North), Kyaiklat, Kyangin, Kyauk Pone, Kyaung Su, Kyaunggon, Kyee Pin, Kyon Kyaik, Kyon Ta Nee, Kyon Thin, Kyonpyaw, Labutta, Lemyethna, Let Pan, Ma Gu Yoe, Maubin, Mawlamyinegyun, Myanaung, Myauk San, Myaungmya, Myay Nu, Myin Ka Seik, Ngapudaw, Ngathaingchaung, Ngayokekaung, None Kyun, Nyaungdon, Ohn Pin Su, Pantanaw, Pathein, Poe Su Gyi, Pyapon, Saung Bon, Saw Pyar, Shar Khe Ywar Ma, Shar Taw, Shwe Laung Ywar Ma, Shwe Myin Tin, Shwethaungyan, Sin Hnit Kaung, Tar Kauk, Tar Pyat, Taung Ka Lay, Taung Tan Kone, Thabaung, Than Din Gyi, Thauk Kyar Du, Thaung Gyi Ywar Ma, Wakema, Wea Nge Kan Su, Yae Le, Yae Nant Thar, Yae Sa Khan, Yan Kin San Yar (Ah Nauk Kyun), Yegyi, Ywar Thit Kone, Zalun, Zee Hpyu Kyun.

In **Bago**, 1493 incidents killing 1886 people were reported. The following locations were among the affected: Ah Hlaing, Ah Htet Myet Ni Kwin, Ah Kyat Inn, Ah Lel Kone, Ah Lel Kyun, Ah Nan Baw, Ah Nyar Su, Ah Nyar Tan Gyi, Aing Zauk, Auk Khon, Aung Chan Thar, Aye Ma Twin, Aye Mya Thar Yar, Bagan, Bago, Ban Laung, Bant Bway Kan, Bant Bway Kone, Baw Bin, Baw Di Kone, Baw Ka Htar, Bo Kone, Bo Te Su, Boe Taw Kone, Bu Bet, But Sein Bu, Chan Thar Kone, Chauk Ein Su, Chaung Gwa, Chaung Gwa (G), Chaung Kaung, Chaung Kyoe, Chaung Ma Gyi, Chaung Nar, Chaung Zauk, Chay Taw Yar, Chin Lel, Chin Yoke Kwin, Chon Inn, Da La Seik, Daik-U, Dar Dauk, Dar Ku lar (Myanmar), Dar Thway Kyauk, Daung Lu, Daung Ma Nar (Daung Myat Nar), Daung Moet, Daung Taik, Doe Nwe, Doe Tan, Doe Thaung, Don Za Yit, Done Toe, Dwa, Gant Gaw Pin Ywar Ma, Gon Hnyin Tan, Gone Te, Gwa Aing,

Gway Cho Kwin, Gway Kone, Gway Tauk Kwin, Gyaung Tar, Gyobingauk, Hin Thar Kan, Hin Thar Wea, Hlay Done, Hlay Swea Myaung, Hle Ku, Hlwa Sin Kone, Hlwa Zin, Hman Kone, Hnaw Khin, Hnaw Pin, Hnget Pyaw Tone, Hnget Thaik, Hnit Tant Ku, Hpa Lan Kone, Hpa Yar Gyi, Hpa Yar Ka Lay Kone, Hpa Yar Kwin + In Taw Thar, Hpa Yar La Har, Hpa Yar Ngoke To, Hpa Yar Pyo, Hpaung Tin, Hpyan Tha Lin, Hswar, Htan Kone, Htan Pin Chaung, Htan Pin Kone, Htantabin, Htein Taw, Htein Thay, Htoe War Chaung, Htoe War Saik, Htwa Ni Kone, In Gyin Thar, In Kone, In Kwin, In Pin Hla, In Pin Thar, In Taing Kone, Inn Ba Lar, Inn Boke Kone, Inn Ga Ni, Inn Kat Pa Leik, Inn Net (Lower), Inn Net (Upper), Inn Pet Let, Inn Taing Kone, Inn Taw Kan, Inn Waing, Ka Li, Ka Mar Nat, Ka Nyin Kyoe, Ka Zin Pin, Kaing Chaung, Kaing Gyi, Kaing Ka lay, Kaing Pyin Gyi (Myauk Su), Kaing Taw Su, Kan Ka Lay, Kan Ka lay, Kan Ni, Kan Su Ywar Ma, Kan U, Kant Ni, Kanyutkwin, Kauk Kwayt, Kauk Mei Thu, Kawa, Kawt Pyin, Ke Lin Seik, Khin Gyi, Khin Kant Lant, Khin Tan, Khin Tan Gyi, Khin Tan Lay, Kho Lo, Kin Mun Chon, Koke Kaing, Koke Ko Kone, Kone Inn (East), Kone Inn (South), Kone Inn (West), Kone Tan, Kone Thar, Kone Ywar, Ku Toet Seik, Kun Chan, Kun Ohn, Kun Pin, Kun Seik, Kwin Chaung, Kwin Da La Lay, Kwin Waing, Kyant Thay, Kyat Chaung, Kyauk Khe Gyi, Kyauk Lone Gyi, Kyauk Sa Yit, Kyauk Taing, Kyauk Tan, Kyaukkyi, Kyauktaga, Kyaung Kone, Kyaung Soe, Kyaung Su, Kyaw Hla, Kyee Pin Pauk, Kyeik Pa Tee, Kyein Khar Kone, Kyet Tet Nyaung Pin, Kyoet Kone, Kyoet Pin, Kyoet Pin Sa Khan (Ah Shey Su), Kyoet Pin Thar, Kyoet Pin Waing, Kyu Inn (East), Kyun Gyi, Kyun Kone, Kyun Pin Seik, Kyun Taw, Kyun Taw Kone, Kyun Taw Su, Kywe Cho Inn, Kywe Kaw Pin, Kywe Ma Kaing, Kywe Nwe Goke, Kywe Pwe, Kywe Ta Lin, Kywe Te Kone, Kywe Yaing Pyin, Lay Ein Su, Lay Gyi, Lay Paw Mu, Leik Paw, Leik U Kone, Lein Pin, Lein Pin Wea (Lower), Lein Pin Wea (Upper), Lel Ma Inn, Lel U Su, Let Kauk Wa, Let Khan, Let Pan, Let Pan Khon, Let Pan Tone, Let Tet Gyi (Myanmar), Letpadan, Lin Lun Pin, Lin Yaw Khin, Ma Au Kwin, Ma Au Pin Seik, Ma Gyi Pin, Ma Gyi San, Ma Ma Yan (Lower), Ma Me Gyi, Ma Yan Sein Gyi, Ma Yan Sein Lay, Ma Yoe Khon, Mee Chaung Tin, Mei Za Li Kone, Mi Chaung Aing, Minhla, Moke Kha Mu, Mone, Monyo, Mya Pin Ku, Myaung, Myay War Kone, Myet Ni Kwin, Myit Kyoe, Myo Chaung, Myo Soe, Myo Twin, Na Kyat (Upper),

Na Ywe Pin, Nan Za, Nat Laung, Nat Sin Kone, Nat Ta Lin, Nat Ta Lin Su, Nat Than Kwin, Nat Yae Twin, Nattalin, Naung Bo, Naung Cho, Naung Kone, Nga Hpei Inn, Nga Htway Soke, Nga Kyee Inn, Nga Moe Yeik, Nga Nwar Seik, Nga Toe Khin (Kayin), Nga Toe Khin (Myanmar), Ngar Byet Inn, Nwe Kauk, Nyaung Aing, Nyaung Chay Htauk, Nyaung Kaing, Nyaung Kone, Nyaung Pin Aing, Nyaung Pin Gyi Ywar Ma, Nyaung Pin Pauk, Nyaung Pin Thar, Nyaung Pin Zin, Nyaung Tan, Nyaung Zin, Nyaunglebin, Oe May Tu, Ohn Hne Pin, Ohn Pin Su, Oke Hpo, Oke Hpo Su, Oke Shit Khin (West), Oke Shit Kone, Oke Shit Pin, Oke Twin Kone, Okpho, Oktwin, Pa De, Padaung, Pauk Aing Gyi, Pauk Kone, Pauk Tan (Ah Lel Su), Pauk Za Loke, Paukkhaung, Paungdale, Paungde, Pe Nwe Kone Ywar Ma, Pe Thaung, Pein Za Loke Ywar Ma, Penwegon, Phyu, Pi Tauk Kone, Pu Tee Kone, Pu Zun Myaung, Pwe Thar, Pyan Chi Tet, Pyawbwe, Pyay, Pyin Ka Doe Kone, Pyin Ma Pin, Pyin Pon, Pyin Yae, Pyin Yae Gyi, Ran Na Gar, Sa Win, Saik Tan Khin, Saing Ti Su, San Boke, San Hpe, Sar Chaung, Se, Sein Kant Lant, Set Kone, Set Su, Shan Kaing, Shan Su, Shar Hpyu Kwin, Shar Say Bo, Shwe Bo Su, Shwe Ka Zaung, Shwe Ku, Shwe Pauk Pin, Shwe Zan Pyayt, Shwedaung, Shwegyin, Si Kauk Pin, Si Paing, Si Son Kone, Si Tone, Sin, Sin Ku, Sin Lu, Sin Paik (Ah Nauk Su), Sin Swei Myaung, Sin Ta Lin, Sin Te, Sin Te Kone, Sit Pyan Kwin, Son Kone, Swar Ywar Ma, Ta Khwe Kye, Ta Laing Aing, Ta Laing Khin, Tar Pun, Taung Boet Gyi, Taung Kha Mauk, Taung Khin, Taung Lel, Taung Let Gyi, Taung Paw Su, Taung Su, Taung Tha Pyay Kan, Taungoo, Taw Kyaung Pauk (Lower), Taw Kyaung Pauk (Middle), Taw Kywe Inn, Taw Wi Ywar Ma, Tein Myoke Ywar Ma, Tha Hpan Kaing, Tha Hpan Pin, Tha Hpan Zin, Tha Min Inn Kone, Tha Nat Kwin, Tha Nat Tan, Tha Pyay Kone, Tha Yet Chaung, Tha Yet Chin, Tha Yet Hpyu Kan, Tha Yet Kone, Tha Yet Kone Sar Hpyu, Tha Yet Ta Pin (South), Tha Yet Taw, Than Seik Ywar Ma, Thanatpin, Thar Hla Pin Si, Thar Paung, Thar Yar Kone, Thar Yar Kone (Hmaw Inn), Thaung Gyi, Thaung Pu, Thayarwady, Thea Hpyu Ywar Thit, Thea Kaw, Thea Kaw Ohn Pin Su, Thea Kone, Thea Kye Gyi, Thegon, Thein Kone, Thet Kei Kone, Thetkala, Thin Taw, Thin Taw Yoe, Thit Cha Seik, Thit Hpyu Seik, Thit Poke, Thit Sein Kone (North), Thonse, Thu Htay Kone, Thu Ye Thu Mein, Ti Tut Ywar Ma, Tone Taw, U To, U Yin Gyi (Ah Nauk Su), Waing,

Waing Chaung, Waing Pat, Waw, Waw Shan Su, Wea Gyi, Wet Che, Wet Htee Kan Ywar Ma, Wet Khaik Sein, Wet Lar Taw (Myanmar), Wet Tu, Win Kaik Sho, Win Kha Nein, Yae Kyi Chaung, Yae Le (Kayin), Yae Ngan, Yae Oe Sin, Yae Twin Kone, Yae Twin Kone (Lower), Yae Twin Kone (Middle), Yae Twin Kone Gyi, Yae Twin Kone Ywar Ma, Yaung Gyi, Yay Le (Myanmar), Yedashe, Yin Mu Kone, Yin Taik Kone, Yin Taik Kwin (North), Yoke Saing, Yone Chaung, Yone Daing, Ywar Gyi Inn, Ywar Lay Kone, Ywar Ma, Ywar Ma Gyi, Ywar Tan Shey, Ywar Thit, Ywar Thit Kone, Za Loke Gyi, Za Yat Gyi, Za Yat Khin Ywar Thit, Za Yit Chaung, Za Yit Hmyaung, Zayyawadi, Zee Kone, Zigon.

In Chin, 460 incidents killing 328 people were reported. The following locations were among the affected: Ah Baung Thar, Amsoi, Auk Ba Lai, Auk Chaing, Aye Sa Khan, Baung Ku Wa, Bon Laing, Buanlung, Cerhmun, Chat, Chin Dauk, Chin Let Mun, Chuncung, Cikha, Congthe, Congthia, Falam, Hakha, Har Lar Wa, Hleikawng, Hna Ma Dar, Hnone Bon, Hone, Hpyan Chaung, Ka Lar, Kanpetlet, Kha Maung Wa, Kha Wea, Khaik Khar, Khoke, Kihtha, Kyee Lay (Lower), Kyin Dway, Laitui, Lalengpi, Lamzang, Leik Khaung, Lumte, Lun Don, Lungpang, Lungtak, Lway Thar, M'ghinghlaw, Mainuai, Matupi, Maw Chaung, Mee Chaung Bar Wa, Mindat, Mualbe, Mualpi, Muitui, Nga Shar, Nga Shaung, Ngalleng, Pa Lon Twi, Paik Tay, Paletwa, Pan Awt, Par Rar, Phaitu, Phaneng, Phwi, Pwei Laik Wa (1), Relsing, Rezua, Rihkhawdar, Samee, Sat Chauk, Shin Let Wa (Lower), Shwe Laik Wa, Shwin Htwee, Sin Li, Sozang, Ta Run Aing (Ywar Thit), Taingen, Tedim, Thantlang, Thlangpang A, Thlangpang B, Tonzang, Tungzang, Ung, Valangpi, Valangte, Vangteh, Var Sa Khan, Vawmm'tu, Wet Ma, Yae Chan Thar.

In Kachin, 888 incidents killing 835 people were reported. The following locations were among the affected: Ah Htet Hpa Re, Ah Kye, Ah Lang Gar, Auk Maw Hpawng, Aung Myay (1), Aung Myay (2), Ba Lawng Ding Sa, Bang Daung, Bang Htan, Bhamo, Chaung Wa, Chipwi, Da Bat Yang, Dar Hseng, Dawthponeyan, Ga Gam, Gway Htu, Gwayt Gyi, Gwei Ka Htaung, Han Htet, Hawng Par, Hin Thar, Hka Lar Yang, Hkar Shi, Hkat Shu, Hko Kyin, Hku Li,

Hnin Ei, Ho Kat, Hopin, Hpa Kawm, Hpa Raw, Hpakant, Hpar Pyin, Hpi Maw, Hseng Taung (Ywar Haung), Hsin Hkan, Hsint Kin, Hway Hkar, Hway Long, In Sut Zwat, Injangyang, Inn Lay, Inn Thar, Jang Kat, Jang Mai, Ka Tsu, Kaik Hteik, Kamaing, Kan Ba Ni, Kan Ni, Kan Paik Ti, Kawng Gyar Yang, Kawng Hsint, Kawng Lwin, Kawng San, Kawng Ton, Kha Ran Hti Dam, Khaunglanhpu, Kone Tan Gyi, Konlaw, Kyauk Hpyar, Kyauk Sa Khan (Kachin), Kyaw Hkawng, La Bang, La Gway, La Hpai, La Mawng, La War, Lai Zar, Lan Gwa, Lan Ku, Lawt Hkun, Lawt Mun, Loi Hkam, Loi Yein, Long Hkin, Long Ja, Lu Myan, Lwegel, Ma Au Pin, Ma Lin, Man Dar, Man Hkar, Man Nawng, Man Pong, Man Wein, Man Yut, Man Ywet, Mansi, Maw Hpawng, Min Jang, Moe Hping, Moe Sein Kyun, Mogaung, Mohnyin, Momauk, Mong Hkawng, Mong Kar, Mong Nar, Mya Lel, Myaing Ywar, Myauk Ywar, Myin Thar, Myitkyina, Myo Hla, Myo Kone, Myo Thit, Nam Hai, Nam Han, Nam Hkam Par, Nam Hkwin, Nam Hlaing, Nam Hmaw, Nam Kwayt, Nam Ma Hpyit, Nam Mun, Nam Sang Yang, Nam Si In, Nam Tein, Nam War, Nam Ya, Nam Yin, Nammatee, Nar Hpawt, Nawng Kon, Nawng Laik, Nawng Si Paw, Nawng Ta Law, Nga Bat Gyi, Nu Zung Baung, Nwan Lang, Nyaung Pin, Nyaung Pin Thar, Pangwa, Puta-O, Sa Ni Khu, Sa Paut, Sadung, San Kar, San Kywei, San Pai, Sar Hmaw, Se Zin, Seik Mu, Sein Long, Sha Ngaw, Shan Keng, Shan Taing, Shwe Nyaung Pin, Shwegu, Si Au, Si He, Si Het, Si Hkam Gyi, Si In, Sikangyi, Sinbo, Sumprabum, Ta Law Gyi, Tan Ja, Tanai, Tar Ma Hkan, Tar Mong Long, Tar Pa Daung, Tar San, Taung Inn, Taung Ni, Taw Pone, Than Ta Dar/Kone Hkar/Ma Len, Ti Yang Zug, Tsawlaw, Tsum Pi Yang, Wai Hku, Waingmaw, War Dat, War Shawng, Win Wa, Wu Yang, Yoe Gyi, Yu Mar, Zin Bon.

In Kayah, 142 incidents killing 311 people were reported. The following locations were among the affected: Bawlake, Chi Kweit, Daw Bu Ngan Yei, Daw Kha Laik Lin, Daw Si Ei, Demoso, Ho Hpeik, Hpasawng, Hpruso, Htee Ka Lu Daw, Ka Yan Thar Yar (North), Khaik Pa Lawt, Khe Ma Hpyu, Kone Sut, Kone Thar, Kyauk Gyi (North), Lel Htwea Ywar Thit, Lin Hpon (Lower), Loi Nan Hpa, Loikaw, Loilen Lay, Maw Chee (Lower), Nan Hpe, Nan Mei Khon, Ngwe Taung Ywar Thit, Noe Koe San Pya, Par Pu, Pe Kinn Kaw Khu, Pu Hpar, San

Pyaw (6) Maing, Shadaw, Tha Yet Pin, Ywarthit.

In **Kayin**, 523 incidents killing 993 people were reported. The following locations were among the affected: Ah Nan Kwin, Ah Zin, Baw Kyoet Lel, Bo Khar Lay Kho, Daw Hpyar (Kayin Su), Hlaing Kwei, Hlaing Wa, Hlaingbwe, Hlut Shan, Hpa Lu Gyi, Hpa Lu Lay, Hpa-An, Hpapun, Hpar Chaung (Ah Twin Me Ka Nei), Hpar Pya, Hpayarthonesu, Htee Khaing, Htee Kyu, Htee Law Thay Hta, Htee Mei Wah Khee, Htee Thea Lay, Hti Hpoe Zan, Ka Maing (Ka Mar Inn) Kone, Ka Taing Ti, Kan Ni, Kaw Bat Chan, Kawkareik, Kawt Bein, Kawt Don, Kawt Ka Mar, Kawt Nwe, Kawt War Le, Kawt War Su, Ku Seik, Kwin Ka Lay, Kya Khat Chaung, Kyaikdon, Kyainseikgyi, Kyauk Kwin, Kyon Kha Wun, Kyondoe, Lay Kay Kaw, Leik Tho, Ma Htaw, Maung Ma Ywar Thit, Me Ka Nei Lan, Me Waing, Mi Par Le, Mi Tan, Min Ywar, Mong Lun (Lower), Mya Pa Taing, Mya Pa Taing Naing, Myauk Kyar Inn, Myawaddy, Myo Haung, Nan Khwee, Nar Khu Hta, Naung Naing, Naw Hpar Do, Naw Ra Kone, Ngar Taing, Noet Aw Lar, Noet Hpaw Htee, Nyaung Pin, Paw Law, Pyar Sa Khan, San Hpa Ree, Sin Pyay, Sin Swei, Su Ka Li, Ta Dar U, Ta Khun Taing, Ta Tan Ku, Taung Kyar Inn, Taung Sun, Than Pu Yar, Thandaung, Thandaunggyi, Thay Baw Boe, Thin Gan Nyi Naung, War Tho Kho, Waw Lay Myaing (Waw Lay), Weik Zar Kone, Whayt Shan, Win Da Yei, Win Htaung, Win Sein (Ywar Gyi), Ya Thayt Gu, Yae Aye, Yae Kyaw Gyi, Yae Pu Gyi, Yan Koke, Ywar Thit, Za Le (South).

In **Magway**, 1536 incidents killing 1933 people were reported. The following locations were among the affected: Ah Htet Kyaw, Ah Kyi Ban, Ah Kyi Pan Pa Lun, Ah Lel Chaung, Ah Lel Kan, Ah Lel Kone, Ah Nauk Chauk Kan, Ah Nauk Gant Gaw, Ah Nauk Ka Hpyu, Ah Neint, Ah Shey Chauk Kan, Aing Ma, Aing Pauk Kone, Auk Seik, Aung Myin, Aung Thar, Aunglan, Aw Zar Taw, Ba Hin, Bant Pyin, Baw Pyin, Bon Ma, Bon Ma Kyun, Bone Baw, Cha Htau, Chaik, Chaing, Chan Thar Gyi, Chan Yar, Chauk, Chauk Taung, Chauk U Thar, Chaung Ku, Da None Myaung, Daung Sar, Dee Doke Kwin, Ga Wun Lay Taing, Gangaw, Goke Gyi, Gon Hnyin Nwe, Gway Cho, Gway Kone, Gwayt Gyi, Gwet Gyi, Hin Thar, Hlan Tin, Hlay Khoke, Hman Kin, Hnan Si Kan, Hnaung

Ba, Hnaw Kone, Hpa Lan Kaing, Hpa Lan Ma, Hpa Lan Oh, Hpa Yar Taung, Hpaung Kyaung, Hpet Taw Yae, Hpone Kan, Hpu Lon, Hpyauk Seik Kone, Hta Lin, Hta Naung Kone, Hta Nyaunt Tin, Htan Bone Taw, Htan Ma Kauk, Htan Nge Taw, Htan Se Pin, Htan Ta Pin, Htein Kaing (Kone), Htein San, In Pin, Inn Bat, Inn Tein, Inn Yaung, Ka Dan, Ka Ni, Ka Taing (North), Ka Taing (South), Ka Zun Ma Ywar Ma, Kaing, Kaing Gyi, Kaing Lel, Kaing Ma Gyi, Kaing Taw Ma, Kamma, Kan, Kan Beit, Kan Chauk, Kan Chaung, Kan Gyi, Kan Gyi Taw, Kan Kone, Kan Lay Kone, Kan Myint Kone, Kan Ni, Kan Oe, Kan Pauk, Kan Pauk Su, Kan Taw, Kan Thar, Kan Thit, Kan Thit Kone, Kayin Ma San, Khin Ba Lu, Khin Shey (Taung Su), Khon Taing Kyin, Khun Hnit Pin, Khway Ah Twin, Kin, Kin Mun Khar, Ko Yint, Ko Yint Kyun, Koke Kar, Koke Ko Gwa, Koke Ko Su, Kone, Kone Ba Lu, Kone Char, Kone Gyi, Ku Lar Shin, Ku Shey Ywar Ma, Ku Toke, Ku Yin Chauk, Kun, Kwayt Daunt, Kwin Gyi, Kwin Gyi (Kwin Thee), Kya Htoe, Kyan Taw, Kyar Khe, Kyar Mway, Kyat Pei, Kyat Wa, Kyauk Hlay Khar, Kyauk Hle Bee, Kyauk Hpyar Lel, Kyauk Htat, Kyauk Khwet, Kyauk Me, Kyauk Oe, Kyauk Se, Kyauk Ta Gar, Kyauk Taing, Kyauk Taing Khin, Kyauk Tan, Kyaukhtu, Kyaung, Kyaung Kone, Kyaw, Kyaw Ma Kyar, Kyee Kan, Kyee Mee, Kyet Shar, Kyi Myint, Kyin, Kyit Pyin, Kyoet Wa, Kyu-Ywar Ma, Kyun Boke, Kyun Chaung, Kyun Khon Thar, Kyun Nyo, Kyun Taing, Kyun Taw, Kyun Te, Kywe Chan, Laing, Lar Poet, Le Bu, Lel Kyin, Lel Kyin Yoe, Lel Ma, Lel Oh, Let Htoke Taw, Let Pa Kan, Let Pan, Let Pan Kyin, Let Se, Let Yet Ma, Lin Ka Taw, Lin Zin, Lon Chon, Lon Haw, Lone Gyi (East), Ma Au (Middle), Ma Au Auk Seik, Ma De, Ma Gyi Kan, Ma Gyi Koe Pin, Ma Gyi Kone, Ma Gyi Lay Pin, Ma Gyi Su, Ma Gyi Tan, Ma Gyi Thone Pin, Ma Gyi Yon, Magway, Mauk Ka Lan (North), Me Za Li, Mi Ae, Min, Min Kan (North), Min Lel, Min Nan Taw, Min Ywar, Minbu, Mindon, Minhla, Moe Kaung, Moe Kwe, Mon Hnyin, Mon Taw, Myaing, Myauk Khin Yan, Myauk Lu Kan, Myauk Pyin, Myaung Thit, Myay Char, Myay Pyin Thar, Myin Kyun, Myin Te Gyi, Myin Zar, Myit Chay, Myo Hla, Myothit, Na Gar Pwet, Na Ywe Taw (East), Na- Hpon Kone, Nan Kyu, Nat Hnyun, Nat Pay, Natmauk, Nay Yin, Nga Chin Chaung, Nga Hlaing Twin, Nga Hpaung Kan, Nga Lin Pan, Nga Lun, Nga Me, Ngape, Ngar Pei, Ngwe Thaung, Ni Pa Say Taw, Nwar Htein, Nwe Ni, Nyaung Gway Wa, Nyaung Gyt Pin, Nyaung Haung, Nyaung

Hla, Nyaung Kaing, Nyaung Lel, Nyaung Pin, Nyaung Pin Kwin, Nyaung Pin Thar, Nyaung Pin Waing, Nyaung Zauk, Oe Bo, Oe Byin Me, Oe Kone, Oh Yin, Ohn Hmin, Ohn Taw (Myauk Su), Ohn Taw (Taung Su), Oke Hla, Oke Hpo, Oke Shit Kone, Pa Khan Gyi, Pa Laung, Paing, Pakokku, Pan Nyo, Pan San, Pan Taing Chon, Par Myin, Pauk, Pauk Ma, Pauk Taw, Paung Laung, Paung Tei, Pay Hnyin, Pay Kone, Pay Pin Taik, Peik Si, Pin Taung, Pin Wa, Pu Khat Taing, Pwintbyu, Pya Ma, Pyar, Pyaung, Pyayt Aing, Pyin Wa, Sa Bay (East), Sa Bay (Middle), Sa Khan Gyi, Sa Lay, Sa Par Hmyaw, Saing Du, Salin, San, San Gyi, San Ka Lay, San Ka Lay Ywar Ma, San Kan Gyi, San Ma Gyi, San Myo, Sat Si Taung (Sat Si), Sat Thwar, Saw, Say Pin Gyi, Se, Se Kan, Se Lel, Se Taw, Seikphyu, Shar Hla, Shauk Taung, Shaw Hpyu Pin, Shea, Shin Ma Kan, Shin Shey, Shone Shi, Shwe Bo, Shwe Bo Ywar Thit, Shwe Bon Thar, Shwe Chaung, Shwe In Pin, Shwe Kyin Kan, Shwe Pan, Shwe Tan Tit, Shwe Toke Kan, Si Zwe, Sidoktaya, Sin Chaung, Sin Lu (North), Sin Lu (South), Sin Ma Ye, Sin Min, Sinphyukyun, Son Ma Gyi Pin, Su Lu Pan, Su Taw, Sun Tet, Swea Lwe, Swei Tei, Ta Hnyaunt Tin, Ta Khun Taing, Ta Nyaung, Ta Paung, Ta Yaw Kaing, Taing Tar, Tat Kone, Taung Khin Yan, Taung Oh, Taung Pyin, Taung U, Taungdwingyi, Taw Ma, Taw Yaung, Tay, Te Gyi, Tet Wun (North), Tha Hmone Kone Gyi, Tha Hpan Kaing, Tha Man Ta Poet, Tha Pyay, Tha Pyay Aye, Tha Pyay San, Tha Yet Chin, Tha Yet Kan, Tha Yet Kone, Tha Yet Kwa, Tha Yet Lay Pin, Than Kone, Than Myay Kyin, Than Pu Yar Chan, Than Pu Yar Khon, Thar Lin, Thar Si, Thar Yar Kone, Thayet, Thea Hpyu, Thea Kyun, Thea Pon (East), Thea Pon (West), Thea Taw, Thee Chauk, Thee Kone, Thee Pin Kone, Thet Kei Kyin, Thet Lel, Thi La, Thin Taw, Thit Cho Kone, Thit Gyi Taw, Thit Khauk Taung, Thit Mei Zi, Thit Nyi Naung, Thit Yar Kauk, Ti, Tilin, Tin Gat, Twin Gyi, Twin Lat, Twin Lel, Twin Ma, U Yin (South), War Kyun Kwin, War Pin, Wet Choke, Wet Kaw, Wet Kyone, Wet Poke, Wun, Wun Gyi, Wun Lo, Wun Ya, Yae Kyi, Yae Lar Gyi, Yae Lar Lay, Yae Myet, Yae Myet Ni, Yae Nan Chat, Yae Poke, Yae Shin, Yae Shin Ma, Yae Yin, Yar Gyi Pyin, Yat Thar, Yenangyaung, Yesagyo, Yint Ye, Yint Ye Chaung, Ywar Khaing, Ywar Ma, Ywar Mun, Ywar Si, Ywar Thar Aye, Ywar Thit, Ywar Thit Gyi, Ywar Thit Kone, Za Ya Ma, Zar Haw, Zee Hpyu Kone, Zee Kone, Zee Lone, Zee Pyar, Zee Taw.

In Mandalay, 1700 incidents killing 2165 people were reported. The following locations were among the affected: 4 Maing Kan Thar, Ah Htet Kyauk Kyan, Ah Neint, Aint Ma, Amarapura, Auk Taung Kaing, Aung Chan Thar, Aung Pan Kone, Aung Tha Pyay, Aung Thar, Aungmyaythazan, Aye, Aye Kyun, Ba Lon, Bagan, Bar Gar, Baw Mar, Bawt Lone, Bawt Lone Gyi, Bawt Lone Lay, Bay Thaung, Bo Kone, Boke Kone, Bon Thar, Bon Thar Kone, Bu Kaing, Chan Nyein Thar, Chanayethazan, Chanmyathazi, Chaung Gyi, Chaung Shey, Chaung Son, Chaung Taw Wa, Chay Say, Daing Kaung Kone, Daing Lel, Dan Daing, Dar Kyun, Dar Yei Kaung, Daung Kyun, Daunt Boe, Dee Doke Kone, Din Gar Kyun, Doe Nwe, Done Kone, Du La Bo, Du Wun, Gant Gar, Gaung Kwe, Gint Ge, Gone Kwayt, Gwayt Gyi, Gwayt Pin, Hin Thar Kone, Hin Thar Ywar Thit, Hle Ku Ma, Hlyaw Hpyu, Hlyaw Hpyu (North), Hmet Kha Yar, Hnat Cho Taw, Hnget Sar, Ho Weik, Hpa Lan Kone, Hpa Yar Hla, Hpa Yar Htu, Hpaung Kyin (North), Hpaung Kyin (South), Hpawt Taw, Hpet Shey, Hpet Yin, Hpon, Hpon Kone, Hpyu Yaung, Hta Naung Kone, Hta Naung Pin Le, Htan Chauk Pin, Htan Pin Kone, Htan Ta Pin, Htan Taw, Htan Taw Kone, Htan Zin (North), Htauk Shar, Htauk Yit, Htee Kone, Htee Taw Moe, Htein Ba Lar, Htein Kan Gyi, Htein Pan, Htein Pin Sauk, Htone Bo, Htone Gyi, In Gyin Myaing, Inn Kone, Inn Net, Inn Ta Khar, Inyar (East), Ka Daung, Ka Kye, Ka Nar (Kan Nar), Ka Taw, Ka Thea (Middle), Kaing, Kaing Gyi, Kaing Myauk, Kan, Kan Chaw (Ga Lant), Kan Gyi, Kan Hnaung, Kan Hpyu, Kan Mye, Kan Ni, Kan Sint (North), Kan Swei, Kan Taung, Kan Taw (South), Kaung Pin Si, Kha Yu Toke, Khan Sat Kone (East), Khet Lan, Khet Thin, Khin Ma Kan, Kin, Koe Pin, Koke Ke, Koke Ko Zee, Kone, Kone Lel, Kone Paw Net, Kone San, Kone Tan Gyi, Kone Tan Lay, Kone Thar, Ku, Ku Kone, Ku Lar Te, Ku Taw, Kun Ohn, Kun Saik, Kun Thee Pin (Lay Ein Tan), Kwin (30), Kya Oh, Kyar Hnyat, Kyar Kan, Kyar Ni Kan, Kyar Poet, Kyar Taing, Kyat Pyin, Kyat Pyin Ywar Ma, Kyauk Gyi, Kyauk Hpyu, Kyauk Kan, Kyauk Kone, Kyauk Me Lay, Kyauk Mee, Kyauk Nga Nwar, Kyauk Oe, Kyauk Pyin Kan, Kyauk Pyoke, Kyauk Sa Yit Kone (South), Kyauk Sauk, Kyauk Ta Dar, Kyauk Ta Gar, Kyauk Ta Lone, Kyauk Taing, Kyauk Tan, Kyaukpadaung, Kyaukse, Kyaung Hpyu Kan, Kyaung Oh, Kyi, Kyi Kone, Kyi Tauk Pauk, Kyin, Kyin Thar, Kyoet Pin, Kyun Daunt, Kyun U, Kywe Chan Kone,

Kywe Kya, Kywe Ta Lin, Kywe Tat, Lay Tan, Lay Ywar Son, Leik Kya, Lel Gyi, Lel Taw Gyi, Lel Thit, Let Htoke, Let Kaung, Let Kaung Gyi, Let Pan Hla, Let Pan Kone, Let Pan Pin, Let Pan Thar, Let Wea, Lint Kone, Lone Taw, Ma Gyi Kan, Ma Gyi Kone, Ma Gyi Kyat, Ma Gyi Pin Te, Ma Gyi Su, Ma Gyi Taw, Ma Gyi Tha Hmyar, Ma Lel, Ma Yoe Kone, Madaya, Mahaangmyay, Mahlaing, Mandalay, Mar Le, Me Dee, Mee Pauk, Meiktila, Min, Min Kan, Min Kone, Min Lel, Min Nay Kone, Min Su, Moe Gyoe, Moe Hnaung Khin, Moe Taung, Mogoke, Mon Taw Lay, Mway Hin Thar, Mway Ku Toet Seik, Mway Kyi Kone, Mway Pon Kan (East), Mway Pu Thein, Mway Sin Kone, Mway Ta Laing, Mway Te Oke, Mway Thit Taw Yone, Mya Kan, Mya Kan Thar, Mya Thi Dar, Myaing Thar, Myauk Kone, Myauk Kyun, Myaung Thit, Myaung U, Myay Hpyu Kone, Myay Ngu, Myay Nu, Myet Shu, Myin Chan Kone, Myin Ni, Myin Thei, Myingyan, Myit Kan, Myitnge, Myittha, Myo Hla, Myo Kone, Myo Thar (East), Na Be Kan, Na Be Myit, Na Be Thar, Na Bu Taw (North), Na Bu Taw (South), Na Nwin Taw Bo, Na Wa Rat, Nan Kat, Nan Taw Kyun, Nat Gyi, Nat Htar, Natogyi, Nay Pu, Ngan Myar, Ngathayauk, Ngazun, Nge Toe, Ngwe Thaung (East), Nwe Ni, Nwe Yon, Nyaung Kone, Nyaung Kone (Lower), Nyaung Kone (North), Nyaung Kone (Upper), Nyaung Lay Pin, Nyaung Oke Hpee, Nyaung Pin, Nyaung Pin Hla, Nyaung To, Nyaung Wun, Nyaung-U, Ohn Hne Chaung, Oke Hpo Lay Ywar Thit, Oke Shit Kone, Oke Taik, Pa Leik (Ywar Ma), Paik Te Kone, Pan Ma Hteik, Pan Ya, Patheingyi, Pauk Kone, Pauk Myaing, Pauk Taw, Pay Pin Shey, Pe Khin Gyi, Pe Khin Kyaw, Pein Pyit (Lower), Pein Pyit (Upper), Pein Pyit (Ywa Ma), Pin Lel Gyi, Pin Lel Inn, Pin Tha Pyay, Po Wa (North), Po Wa (South), Pon Nar Chan, Pu Leik Kone, Pu Tee Hpyu, Put Taing, Pwe Khin (Middle), Pya That Gyi, Pyar, Pyaung Gaung Lay, Pyawbwe, Pyay Thar Aye, Pyi Pan, Pyigyitagon, Pyin Hla Taw, Pyin Si, Pyinoolwin, Pyoe Kan, Sa Kar Pin, Sa Kyin, San Pya, Sauk Chon Pauk, Say Khin Gyi, Se Kone, Se Pei, Se Taw, Seik Kone, Seik Thar, Sein Kone, Sein Pan Kone, Sein Pan Pin, Shan Myaung, Shan Te, Shan Thu Nge, Shar Say Chet, Shauk Pin Yoe, Shin Hla (Middle), Shin Hla (South), Shwe Ba Yet, Shwe Boe Gyi, Shwe Chaung, Shwe Gon Taing, Shwe Pyi, Shwe Taung, Si Mee Khon Town, Si Taing Kan, Sin Chaung (North), Sin Chaung (South), Sin Hnyat Kone, Sin Hpyu, Sin Hpyu Kone, Sin Kyun, Sin Te,

Sin Thay, Sin Ywar Gyi, Singu, Sintgaing, Sit Kone, Son, Su Hpyu Kone, Su Kar, Su Lay Kone, Su Yit Kone, Sun Lun, Ta Dar (East), Ta Dar U, Ta Laing Ngoke, Ta Laing Yat (Ywar Thit), Ta Loke Myo, Ta Mar Kan, Ta Mar Kone, Ta Pei, Ta Yaw Pin, Tada-U, Takaung, Tan Saung, Taung Inn, Taung Kan, Taung Se, Taung Shey, Taungtha, Taw Pu, Taw Pyar, Taw Su, Tha Hpan Daunt, Tha Hpan Thar, Tha Kyin, Tha Man Taw, Tha Min Bay, Tha Min Chan, Tha Min Twin, Tha Nat Kone, Tha Pyay Chaung, Tha Pyay Kaing, Tha Pyay Pin Kone, Tha Yet Kan, Tha Yet Kaung Pin, Thabeikkyin, Than Chat Kone, Than Kone, Thar Yar Gyi, Thar Yar Kone, Thar Yar Wa Di, Thea Kyun, Thea Taw, Thee, Thein Taing, Thet Kei Kyin, Thi La Kone, Thin Pyun, Thit Pin Shey, Thit Yon, Thone Htaung (Ywar Ma), Thone Se Pay, Thone Taung, Thu Htay Kone, Thu Soe, Ton Kone, Tu Ywin Boet, Twin Nge, U Dein, U Yin Gyi, Wa Thon Da Ra, War Gyi Aing, War Lone Pyun, Waw Su, Wea Laung, Wet Choke Kone (South), Wet Lu (East), Wet Lu (Middle), Wet Thay, Wet Wun Zay Kone, Wun Su, Wundwin, Ya Thar, Yae Chaung Bo, Yae Htwet, Yae Kyi, Yae Lel Thaung (West), Yae Nant Thar, Yae Nyar U, Yae Taw, Yae Zin, Yamethin, Yan Ta Po, Yauk Ma Soke, Ye Gyi, Ye Pa Daing, Yet Kha Di Pa, Yit Kan, Yoe, Yon Htoe, Yone Pin, Yone Pin Kone, Ywar Bo (South), Ywar Gyi, Ywar Shey, Ywar Tan, Ywar Taw, Ywar Taw Lay, Ywar Thar, Ywar Thar Aye, Ywar Thar Yar, Ywar Thit, Ywar Thit Kone, Za Kyan, Za Lat Kone, Za Yat Gyi, Za Yat Kwin, Zee Hpyu Kone, Zee Kone.

In Mon, 588 incidents killing 478 people were reported. The following locations were among the affected: Ah Bit, Ah Khaik (Sit Kwin), Ah Lu Gyi, Ah Nin, Ah Pa Loi, Ah Pyin Sa Khan, Ah Sin, Ah Wun Gyi, Ahr Yu Taung, An Ka Sin, Aung Thar Yar, Aye Ka Bar, Bilin, Chaung Hnit Khwa, Chaung Taung, Chaung Zauk Ywar Gyi, Chaungzon, Da Nu, Dauk Yat, Daung Ywar, Dhamma Tha, Don Wun, Gawt Ywar Gyi, Hlwa Sin Kone, Hnget Pyaw Taw, Hnin Son, Hnipadaw, Hnit Kayin, Hpet Ka Leik, Hpoe War Thein, Htan Pin Chaung Lay, Htaung Hmu, Htin Shu, Htone Bo Gyi, Htone Bo Ka Lay, In Ga Po, Ka Lein Pa Daw, Ka Li Kyun, Ka Mar Saing, Ka Nin Ka Mawt, Ka Ra Way Seik (Middle), Ka Yoke Pi, Kamarwet, Kan Ni, Kar Seik, Kawt Bein, Kawt Dun, Kawt Dut, Kawt Hlaing Ywar Gyi, Kawt Hlaing Ywar Lay, Kawt Htin, Kawt Ka Dut, Kawt Ka Mei, Kawt

Kha Mei, Kawt Lay, Kawt Pa Naw, Kawt Pa Yan, Kawt Pi Htaw, Kawt That, Kawt Wan, Kayin Lay Seik, Kha Ywea, Khawzar, Kin Mun Chaung, Koe Maing, Kone Myint Thar, Ku Lar Koke (Ah Htet Seik), Ku Toet Seik, Kun Du, Kun Hlar, Kya Thaung Seik, Kyaik Pi, Kyaik Ywea, Kyaikmaraw, Kyaikto, Kyar Ban, Kyauk Hpyar, Kyauk Tan Ka Lay, Kyaung Ywar, Kyon Laung, Kyon Nye, Kyun Kone, Lamaing, Lein Maw Chan, Ma Yan, Ma Yan Chaung Kwar Yi Ywar Thit, Ma Yan Kone, Ma Yan Kone (Taung Paing), Man Aung, Mawlamyine, Mawt Ka Nin, Me Pa Li, Mei Ta Yo, Mi Chaung Aing, Min Ywar, Moe Kaung, Moke Kha Mawt, Moke Kha Mu, Moke Pa Lin, Mudon, Myat San, Myay Ni Kone, Myo Haung, Nat Gyi, Naung Bo, Nga Pu Inn, Nyar Dawei, Nyaung Kone Gyi, Oke Ta Dar, Pauk Kwe, Pauk Taw, Paung, Paw Taw Mu Ywar Gyi, Pein Hne Kone, Pu Tein Yoe, Pyin Ka Doe Kone, Pyin Thar, San Pya, Seik Kyun (North), Shwe In Don, Shwe Pyi Thar, Shwe Yaung Pya, Sin Twin, Sin Ywar, Son Nant Thar, Su Inn, Ta Kay Chaung Hpyar, Ta Ra Nar, Taung Ka Lay, Taung Pa, Taung Sun, Taung Thu Htay Kone, Tet Tu Kone, Tha Pyay Ni, Than Ka Laung, Thanbyuzayat, Thaton, Thaung Pyin, Thea Hpyu Chaung, Thea Kone, Thein Za Yat, Thet Kaw, Thone Ein Su, Thone Gwa, Thuwunnawady, Wan Be Inn, War Kha Yu, Wea Ka Li, Wea Kha Mi, Wea Taw, Win Ka Law, Win Kan, Win Pa Ywar Gyi, Win Ta Pan (Upper), Win Tar Pan, Yae Twin Kone, Yae Wai Ywar Gyi, Yaung Daung, Ye, Ye Ta Khon, Ywar Thit, Zee Hnit Pin, Zee Hpyu Thaung, Zee Pyaung (1), Zee Wun, Zoke Thoke Ywar Gyi.

In **Naypyitaw**, 68 incidents killing 85 people were reported. The following locations were among the affected: Aye Chan Thar San Pya, Aye Lar, Bwet Gyi Yoe, Det Khi Na Thi Ri, Gway Tauk Yoe, Hpa Yar Taung, Kwayt Gyi, Kyan Hpo Su, Kyun U, Ma Gyi Kone, Naung Bo (Ywar Ma), Nay Pyi Taw, Nyaung Pat, Nyaung Pin Waing, Oke Ta Ra Thi Ri, Pan Tin, Pi Tauk Kone, Poke Ba Thi Ri, Pyinmana, Shan, Sin Thay, Tatkon, Tha Kyar Set, Tha Nat Pin Seik (East), Thar Yar Aye, Thu Htay Kyun, Ywar Thit, Za Bu Thi Ri, Zee Hpyu Pin.

In **Rakhine**, 2075 incidents killing 4336 people were reported. The following locations were among the affected: (Du) Nyaung Pin Gyi, Ah Be, Ah Bu Gyar, Ah

Htet Ba Win, Ah Htet Zin Kaung, Ah Lel, Ah Lel Chaung, Ah Lel Kyun, Ah Myint Kyun, Ah Nauk Ye Ku Lar, Ah Ngu Maw (Kone Tan), Ah Pauk Wa, Aing Din Ywar Thit, Ann, Ann Thar, Auk Nat Maw, Auk Tha Byu Chaing, Auk Ywar (Ywar Haung), Auk Zin Kaung, Aung Ba La, Aung Daing, Aung Min Ga Lar (NaTaLa), Aung Myay Kone, Aung Tha Pyay, Aung Thar Yar (NaTaLa), Aung Thar Zay, Aung Zay Di, Aung Zay Ya, Aung Zay Ya (Nyein Chan Yay), Ba Da Nar, Bar Bu Taung, Bar Li Chaung, Bar Ta Lay, Bar Yay, Baw Di, Baw Di Kone, Be Inn, Bu May, Buthidaung, Chaik Taung, Chaung Gyi Hpyar, Chaung Hpyar, Chaung Net, Chaung Nwe, Chaung Thar, Chaung Thit, Chaung Thone Gwa, Chein Kar Li, Chi Laing Hpin, Chin Kone, Chin Kwin, Chin Twin, Daing Gyi, Dar Gyi Zar, Dar Let Ah Lel Kyun, Dar Wa, Daung Taw Yoe, Daw Mya, Dei Boke, Di Par Yon, Doe Tan Gyi, Doke Kan Chaung, Don, Done Chaung, Done Pyin (East), Du Oe Thei Ma, Dway Cha, Gant Gar (West), Gant Gaw Kyun, Gant Gaw Taung, Gaung Nyar, Ge Laung (South), Goke Pi, Gone Nar, Gwa, Gwa Son, Gway Taing, Gwayt Chaung, Gyai Kauk, Gyeik Taw, Gyeik Taw Ywar Ma, Gyi Pyin, Gyi Wa, Gyoe Gyar Kwin, Har Bi (Middle), Har Bi (West), Haw Ri Tu Lar, Hla Poe Khaung, Hman Ni, Hmo Hin Pyin, Hmyaw Chaung, Hmyon Pyin, Hnan Me Taung, Hnget Pyaw Chaung, Hpa Laung Pyin, Hpar Hpyo (Ah Htet), Hpar Wut Chaung (Ywar Thit), Hpet Kya, Hpon Nyo Leik, Hpone Nyo, Htee Swea, Htu Sayt Kay, Htun Ya Wai, In Gyin, In Gyin Myaing (NaTaLa), In Kone, Inn Din, Inn Hpauk, Ka Kyet Bet, Ka Myin Kan, Ka Nyin Chaung, Ka Nyin Tan, Ka Nyin Taw, Kaing Gyi (NaTaLa), Kaing Gyi (Rakhine), Kaing Khon, Kaing Taw, Kan Chaung, Kan Day, Kan Dee, Kan Deik, Kan Ni, Kan Pauk, Kan Pyin, Kan Pyin Thar Si, Kan Pyin Ywar Haung, Kan Pyin Ywar Thit, Kan Sauk, Kan Seik (South), Kan Thar Yar, Kan Thone Sint, Kanhtauntkyi, Kha Maung Seik, Kha Maung Taw, Kha Maung Tone, Kha Naung Gyi, Kha Yaing, Kha Yay Myaing, Kha Yu Chaung, Khaung Laung Chaung, Khaung Laung Du, Khaung Laung Ywar Haung, Kin Chaung, Kin Maw, Kin Pon, Kin Taung, Koe Tan Kauk, Kon Tan Kyein Chaung, Ku Lar Bar, Ku Lar Yaung, Ku Toet Lay, Kun Chein, Kun Taing Ywar Gyi, Kun Taung, Kwin Waing, Kya Maung, Kya Ye Byin, Kyan Chaing, Kyar Nyo Pyin (Rakhine), Kyat Yae San, Kyauk Chaung, Kyauk Chaung Pyin, Kyauk Gyi, Kyauk Gyi Pauk, Kyauk Hlay Kar, Kyauk Hpyu, Kyauk

Hpyu Taung, Kyauk Ka Lat, Kyauk Khaung Kwin, Kyauk Pa Sat, Kyauk Pan Du, Kyauk Pyin Seik, Kyauk Sa Kwe, Kyauk Seik, Kyauk Seik Taung, Kyauk Son, Kyauk Ta Gar, Kyauk Tan, Kyauk Tan Gyi, Kyauk Than Chay, Kyaukpyu, Kyauktaw, Kyaung Hpyu Kwin, Kyaung Kone, Kyaung Na Hpay (East), Kyaung Na Hpay (Myo), Kyaung Shey Chaung, Kyaung Taung, Kyay Taw, Kyay Taw Paik Seik, Kyee Kan Pyin (Middle), Kyein Chaung, Kyein Khway Maw, Kyein Thar, Kyeintali, Kyet Taw Pyin, Kyet Tha Ray, Kyway Chaing, Kywe Htoe, Kywe Thauk, La Baw Wa, La Mone Taing, La Mu Ta Pin, Lan Ma Taw, Lat Pan Pyar, Laung Chaung, Laung Kyoe, Laung Sat, Lay Hnin Taung, Lay Pon Kyauk, Lay Thwan, Leik Ya, Let Wea Det, Let Wea Sar Taik, Lin Mu Taung, Lin Thi, Lint Zin Ywar Thit, Lone Ton, Ma Day Kyun Ywar Ma, Ma Gyi Chaung, Ma La Kyun, Ma Naw Thi Ri, Ma Nyin Taung, Ma-Ei, Maung, Maung Hnit Ma, Maung Ni, Maung Shwe Lay, Maungdaw, Maw Htoke Gyi, Maw Ra Waddy (NaTaLa), Maw Yon, May Lun, Me, Me Let Maung, Me Sa Li, Mee Chaung Htoe, Mee Kyaung Tet, Mee Taik, Mee Wa, Min, Min Ga Lar Gyi, Min Hpu, Min Kan, Min Te, Min Tet, Min Tet Taung, Minbya, Moke, Mrauk-U, Munaung, Myauk Taung, Myaung Bway, Myaung Nar, Myebon, Myin Hlut, Myit Nar, Myo Kwin (Upper), Myo Thu Gyi, Na Gu May, Na Khaung To, Na Yan, Nan Chaung (Lower), Nat Pyin, Nat Seik, Nat Taung Maw, Nat Taung Pyin, Nay Pu Khan, Nga Khu Ya, Nga Let Kya, Nga Pyl Kyun (Middle), Nga Pyei, Nga/ Kyin Tauk, Nga/ Tan Pyin, Nga/Wai (Ein Shey Min), Ngapali, Ngwe Taung, Nu Ru Lar, Nwar Tin Koke, Nyaung Chaung, Nyaung Chay Htauk, Nyaung Khet Kan (Ywar Haung), Nyaung Pin Gyi (Rakhine), Nyaung Pin Hla, Nyaung Pin Kwin, Nyo Yaung Chaung, Oe Htein, Ohn Maw, Ohn Taw, Oke Hpoke Kan, Oke Taung Pyin, Pa Da Kyaw, Pa Day Thar, Pa De Kaw, Pa Din, Pa Yin Taung, Paik Thei Ku Lar, Pale Taung, Pan Chin Pauk, Pan Hpe Chaung, Pan Myaung, Pan Ni Lar, Pan Taw Pyin Ywar Thit, Par Da Leik, Pat Kwayt, Pauk Inn, Pauk Taw Chay, Pauk Taw Pyin, Pauk Tu, Pauk Tu Taung, Pauktaw, Paung Zar, Pein Hne Kone, Pein Yae San, Ponnagyun, Pu Nya Waddy, Pu Rein, Pu Zun Chaung, Pyaing Chaung, Pyaing Sayt Kay, Pyaing Taung, Pyar Chaung Gyi, Pyar Lay Chaung, Pyar Thar, Pyaung Chaung, Pyaung Thay, Pyein Taw, Pyi Char, Pyi Taw Thar, Pyin Hpyu, Pyin Taw Gyi, Pyin Yaung, Pyone Pye, Ramree, Rathedaung, Sa Bai

Chaung, Sa Hnyin, Sa Ne, Sa Par Htar, Saing Chon, Sar Chet, Sar Chet Gyi, Sar Chet Ka Lay, Sar Pyin, Sar Pyin Gyi, Sat Si, Sat Thwar, Say Poke Kay, Set Ka Yae, Shauk Chaung, Shwe Baho, Shwe Hlaw, Shwe Hlay, Shwe Kyaung Pyin, Shwe Kyin Pyin, Shwe Taung Thar, Shwe U Kwin, Shwe Yin Aye, Shwe Zar (West), Si Pin, Sin Din Lay, Sin Gaung, Sin Gyi Pyin (Rakhine), Sin Ku, Sin Kyat, Sin Swei Ya, Sin Tet Maw, Sin Thay Pyin, Sin U Taik, Sit Ke Chaung, Sittwe, Su Poke Kone, Swayt Chaung, Ta Bet, Ta Man Thar (Ku Lar), Ta Man Thar Ah Nauk (Rakhine), Ta Pyawt, Taing Kyoe, Tan Hlwe Ywar Ma, Tan Swei, Tat Maw, Tat Min Chaung, Tat Taung, Taung Chaung, Taung Hla Maw, Taung Hpu, Taung Nyo, Taung Pyo, Taung Pyo Let Yar, Taung Taik, Taung U, Taung U Maw, Taungpyoletwea, Taw Kan, Te Mauk, Tein Nyo, Tha Pyay Chaung, Tha Pyay Kan, Tha Pyu Chaung, Tha Pyu Chein, Tha Ray Kon Baung, Tha Win Chaung, Tha Yet Cho, Tha Yet Oke, Tha Yet Pin Kwin, Tha Yet Ta Pin, Tha Yet Taung, Tha Yet Taw, Thandwe, Thar Dar, Thar Si, Thar Yar Aye, Thar Yar Kone, Thar Zay, Tharaphy, Thaung Da Rar, Thay Kan, Thea Kan Htaung, Thea Khe Chaing, Thea Khon, Thea Kone, Thea Tan, Thein Tan, Thein Taung, Thet Kaing Nyar, Thet Pone, Thin Chi Kaing, Thit Ngoke To, Thit Poke Taung, Thit Pon, Thone Saung, Tin Ma, Tin Taw, Toke Chaung, Toke Pinlel, Toungup, Udaung, Wa Tein, War Bo, War Nwe Pyin, Way Thar Li, Wea Gyi, Wea Gyi Daunt, Wet Kyein, Wit San, Ya Da Nar Myaing (Lower), Ya Haing Ku Toet, Ya Haing Kwin, Yae Boke, Yae Chan Pyin, Yae Hpyu Aing, Yae Kyaw, Yae Nauk Ngar Thar, Yae Sin, Yae Soe Chaung, Yan Aung Pyin, Yan Khaw, Yar Tan, Yat Taw Mu, Yat Thar Ywar Thit, Ye Yoe Pyin, Yoe Ta Yoke, Ywar Haung Taw, Ywar Ma Rakhine, Ywar Thar Yar, Ywar Thit Kay, Ywar Thit Kone, Ywet Nyo Taung, Za Lun, Zaing Chaung, Zay Di Kwin, Zay Di Pyin, Zay Di Taung, Zee Kaing, Zee Khon, Zee Kone, Zee Kyun, Zee Pin Gyi, Zu Kaing.

In Sagaing, 3763 incidents killing 3185 people were reported. The following locations were among the affected: Ah Htet Hnget Pyaw Taw, Ah Htet Kin, Ah Lel Bon, Ah Lel Khon, Ah Myint (East), Ah Shey See, Ahr Lar Kat Pa, Ahr Ma Khan, Aing Hlyar, Aing Ma, Aing Paung Chaung, Aung Chan Thar, Aung Moe, Aung Myin Thar, Aung Pon, Aung Thar, Aung Thar Yar, Aung Thu Kha,

Ayadaw, Aye Kone, Ba Oe, Bagan Taung, Ban Si, Banmauk, Bant Bway (North), Bant Bway (Ywar Ma), Baw Kone, Bo Kone, Bo Te Kone, Bo Yon, Boe Min Gyi Kin, Bu Ba, Bu Gyi (North), Bu Kaing, Bu Kone, Bu Taung Kan, Budalin, Chat Gyi, Chat Thin, Chaung Gwa, Chaung Ma (East), Chaung Nar, Chaung Son, Chaung Son (South), Chaung Yoe, Chaung-U, Chi Par (North), Chi Par (South), Daung Gyi, Doe Nwe, Doe Waing Chaung, Et Taw, Gon Hnyin Sho, Gway Pin Kyin, Gway Pin Taw, Gya Poet, Gyoe Gyar Kan, Gyoe Gyar Kwin, Gyoe Taung Ywar Ma, Han Thar, Har Par, He Nar, Hin Thar Gyi, Hkamti, Hla Taw, Hlut Taik, Hlwa Sin Kone, Hlwe Te, Hna Ma Sar Yit, Hnaw Kone, Hnaw Nyaung Pin, Hnaw Pin Yoe, Hnaw Yin, Hne Twin, Hnget Pyaw Taing, Hnget Pyaw Taw (South), Homalin, Hpa Lon Chaing, Hpan Khar Kone, Hpan Khar Zin, Hpar Naing, Hpaung Ka Tar (North), Hpaung Ka Tar (South), Hpein Kar, Hpo Hnake, Hpo Kone, Hta Naung Kaing, Hta Naung Kone, Hta Naung Taw (North), Hta Naung Taw (South), Hta Naung Win, Hta Naung Wun, Htan Kone, Htan Pin Hla, Htan Ta Pin, Htan Taw, Htan Taw Gyi, Htan Taw Seik, Htan Taw Taik, Htauk Kyant, Htee Saung, Htee Taw Tin, Hto Mar, Htu, In Daing, In Daing Gyi, In Daing Lay (North), In Daing Lay (South), In Gyi Pin, In Gyi Su, In Koke Kar, In Kone, In Ma Htee, In Ngoke To, In Pin Aing, In Taing, In Taing (North), In Tan, Indaw, Inn, Inn Gyi Maw, Inn Lel Gyi, Inn Pat, Inn Pu Htoe, Inn Te, Inn Tein, Inn Waing, Ka Be, Ka La Zin, Ka Lon, Ka Nan, Ka Toe, Kaing Ma, Kaing Taw, Kale, Kalewa, Kan, Kan Gyi, Kan Gyi (East), Kan Gyi (West), Kan Gyi Kone, Kan Hpyu, Kan Hpyu Ywar Ma, Kan Htu Ma, Kan Kone, Kan Ni, Kan Pale, Kan Pauk, Kan Paw, Kan Pyar, Kan Swei, Kan Thar, Kan Thar Kone, Kan Thar Yar, Kan Thit Ywar Ma, Kan Yin, Kan Zee, Kanbalu, Kani, Kant Daunt, Kar Boe, Kar Seik, Kat Pa Leik, Katha, Kaw Tet, Kawlin, Kawt, Kha Maing (East), Kha Meik, Kha Paung Kyaing, Kha Yan Chan, Khaikam, Khampat, Khan Thar, Khaw Than Ti, Khin Mun, Khin-U, Kho Taung, Khoe Than, Khon Thar, Khun Thar, Khwin Taung, Kin, Kin Mun Taw, Kin Pun Chon (Kin Mun Chon), Kin San, Koe Myo, Koe Pin, Koe Taung Boet, Koke Ko Kone, Koke Ko Su, Kone Paing, Kone Yoe, Ku Le (East), Ku Le (West), Ku Taw, Ku Toet Kone, Ku Toet Seik, Kun Chan, Kwayt Chaung, Kyan Thar, Kyar (Middle), Kyar Pin Aing, Kyar Tet, Kyauk Hlay Kar, Kyauk Hpu, Kyauk Kar, Kyauk Myaung,

Kyauk Oe (North), Kyauk Pa Nan, Kyauk Se, Kyauk Sit Pon (North), Kyauk Taing, Kyauk Tan, Kyauk Yit (East), Kyaung Kone, Kyaung Taik, Kyaung Than, Kyay Mon, Kyee Oke, Kyee Pa Don, Kyet Thun Khin, Kyet Yoe Kone, Kyi Kone, Kyi Su, Kyo Htein, Kyu Taw, Kyun Hla Khon, Kyun Hpo Pin, Kyun Kone, Kyun Lel, Kyun Pin Thar, Kyun Taw, Kyun Taw Gyi, Kyun Taw Kone, Kyun Ywar, Kyunhla, Kyway, Kyway Bagan (North), Kywe Kho Taw, Kywe Thay Chaung, Kywei Pon, Lahe, Lan Son, Laung Min, Lay Bo, Lay Shi, Leik Sin Taung, Lel Di, Lel Gyi, Lel Hla, Lel Ngauk, Lel Taw, Lel Zin, Let Htoke Taw, Let Kauk Kya, Let Khoke Pin, Let Pa Taung, Let Pan (East), Let Pan Gyi, Let Pan Kwayt, Let Pan Taw, Let Pu Kan, Let Se, Let Taung Gyi, Let Taung Nge, Let Yet Kone, Let Yet Ma, Lin Pin Wa, Lin Pone, Ma Au, Ma Daung, Ma Daung Gyi, Ma Daung Hla, Ma Gyi Boke, Ma Gyi Kan, Ma Gyi Kon, Ma Gyi Kone, Ma Gyi Oke, Ma Gyi Su, Ma Gyi Ta Htaung, Ma Htu, Ma Htu Lay, Ma Khauk, Ma Le Thar, Ma Lel, Ma Naw Thar, Ma Soe Yein, Ma Taw, Ma Yoe Taw, Man Hon, Man Maw, Man Sein, Man Taw, Mar Le Taw, Maung Htaung, Maung Kone, Maung Tet, Maw Laik Kone, Maw Lu, Maw Si, Maw Ton, Me Oe, Me Thei, Me Zar, Mei Za Li, Mi Chaung Pin, Mi Chaung Twin, Min, Min Bar (East), Min Bay, Min Ga Lar, Min Kone, Min Kun, Min Oh, Min Taing Pin, Min Tan, Min Te, Min Thar, Min Yar, Mingin, Moe Hnyin Than Boke Day, Moe Kyoe Pyit, Moe Lin, Moe Nat, Moke Ka Li, Moke Si, Mon Hla, Mon Oh, Mon Taing Pin, Mon Yway, Monywa, Mu Tein, Mu Thar Kone, Mya Kan Thar, Mya Kone, Mya Taung, Myaik, Myaing Thar Yar, Myaing Zay Yar, Myauk Chaw Taw, Myauk Chun, Myauk Inn, Myauk Kyi, Myauk Kyin, Myaung, Myaung Hla (Chin), Myay Ne, Myay Ni, Myay Ni Kone, Myin Chin, Myin Daung, Myin Kya (North), Myin Se, Myin Thar, Myinmu, Myit Thar, Myo Gyi Kone, Myo Hla, Myo Paw, Myo Thar, Myothit, Na Bar, Na Bet Gyi, Na Bu Taw, Na Gar Twin, Naint Ban Wa, Nan Chaung, Nan Han Nwet (Ywar Thit), Nan Kaung Kaung, Nan Khan Ywar Ma, Nan Maw Kei, Nan Mun Tar, Nan Pan, Nan Saung Pu, Nant Thar, Nar Khar, Nar Maw, Nat, Nat Chaung, Nat Gyi, Nat Inn, Nat Kha Yaing, Nat Ma Hoke Gyi, Nat Myaung, Nat Yae Kan, Naung Hpar Mu, Naung Meit Lon, Naung Po Aung, Nga Kyaing, Nga Pu Yin, Nga Yae Win, Nga Yoke Ton, Ngar Gyi Aing, Ngar Shan, Ngar Toet, Ngar Yei, Ngoe Pin, Ngwe Twin, Ni Tar, None Twin, Nwe Inn, Nyan Thar,

Nyaung Chay Htauk, Nyaung Gyi Kone, Nyaung Hpyu Pin, Nyaung Kaing, Nyaung Kan, Nyaung Kone, Nyaung Lay Pin, Nyaung Pin, Nyaung Pin Gyi, Nyaung Pin Kan, Nyaung Pin Seik, Nyaung Pin Te, Nyaung Pin Thar, Nyaung Pin Wun, Nyaung Pin Ywar Ma, Nyaung Pin Ywar Thit, Nyaung Pin Zin, Nyaung Taw, Nyaung Thu Myar, Nyaung Zin Gyi, Oe Bo, Oe Thei Kone, Oh Ma, Ohn Ma, Ohn Na Paung, Ohn Pauk, Ohn Taw, Ohn Taw (North), Oke Hpo, Oke Kan, Oke Shit Kan, Pa Du, Pa Du Mone (Ywar Thit), Pa Kar, Pa Laing, Pa Laung, Pa Lin (North), Pa Yit, Pale, Pan Kone (North), Pan Tin, Pan Yan, Pauk Kar, Pauk Sein Kone, Pauk Taw, Pauk Thint Ton, Paung Wa, Paungbyin, Pay Gyi, Pay Kone, Pay Kone (South), Pay Lel, Pay Ta Pin, Pe Khin Gyi, Pe Pyit Taw (West), Pi Ta Kat Kya (East), Pi Tauk Kone, Pi Tauk Pin, Pin Sein Khin, Pin Te, Pin Wei, Pinlebu, Pu Tee, Pu Tein Kone, Pu Yit Kone (North), Pu Yit Kone (South), Pyawbwe, Pyi Taw Thar, Pyin Htaung, Pyin Htaung Gyi, Pyin Htaung Lay, Pyin Kaing, Pyin Khon Gyi, Pyin Khon Lay, Pyin Taw U, Sa Bai Nant Thar, Sa Lun, Sa Par Twin, Sagaing, Saing Naing Gyi, Saing Pyin, Saing Pyin Town, Salingyi, Sar Htone, Sar Kyin, Sar Taung, Sat Ka Yar, Saw Bwar Yae Shin, Saw Gyi, Se Chaung, Se Gyi, Se Gyi Taw, Se Taw, Se Taw U, Se Te - Zee Taw, Se Wa Ywar Haung, See Ma, Seik Hpu Gyi, Seik Khun, Sein Nan, Set Kant, Set Taw, Shan Inn, Shan Seik, Shan Tat, Shan Te, Shar Hpo, Shar Lwin, Shar Pauk Taw, Shar Taw, Shar Yaung, Shein Ma Kar, Shwe Chaung Lel, Shwe Hlay, Shwe Htee Kone, Shwe Kar, Shwe Kyin, Shwe Kyin Maw, Shwe Pauk Pin, Shwe Pyi Aye, Shwe Pyi Thar, Shwe Sar Yay, Shwe Ta Chaung, Shwe Twin, Shwebo, Si Laung, Si Par, Si Poke Ta Yar, Si Son, Si Son Lay, Sin, Sin Aing Ma, Son Kone, Su Lay Kone, Su Poke Kone, Swea Hle, Ta Ein Te, Ta Ga Nan, Ta Gaung Aing, Ta Laing, Ta Nei, Ta Pone, Ta Yaw Taw, Ta Zei Chaung, Tabayin, Tamu, Tan Su, Tat (Upper), Tat Thit, Taung Kyar, Taung Kyaung, Taung Mar Taw Ywar Ma, Taung Pa Lu, Taung Pauk (East), Taung Pon, Taung Yar Seik, Taung Yin (North), Taung Ywar Thit, Taunt Te Kone, Taw Chaung U, Taw Ma, Taw Pu (North), Taze, Te Gyi Kone, Tei Pin, Tei Taw, Tei Thee Taw, Tet Hlaing, Tha Hpan Kaing, Tha Khut Ta Nei, Tha Le Bar, Tha Lone, Tha Nat Sein, Tha Pyay Pin, Tha Pyay Taw, Tha Pyay Thar, Tha Pyay Yin, Tha Pyu, Tha Yaung, Tha Yet, Tha Yet Kan, Tha Yet Khaung, Tha Yet Pin Su, Tha Yet To Yoe, Than Bo, Than Pin Kan, Than

Thei, Thar Hpan, Thar Kay Ta, Thar Si, Thar Wut Hti, Thar Yar Kone, Thar Yar Wa Di, Thaung Thut, Thea Kone, Thee Pin Aing, Thet Kei Kyin, Thi Ri Mun, Thin Baw Pin Kwin (Thin Baw Kyin), Thin Paung Kyin, Thin Taw, Thit Kyin Gyi, Thit Seint Gyi, Ti Laung, Tigyaing, Tin Bet, Tin Maw, Tin Ngoke Gyi, Tin Tein Yan (Ywar Ma), Tin Thar, Toke Ta Loke, Ton Mar He, Tone Paw, Tu Ma Ya, U Aung Zay Ya, U Kin Kyi, U Yin, Wai Thaw, Wan Pyayt, War Tan, War Taw Ma, War Ya Nge, War Yon Khon, Wea Gyi, Wet Lu Aing, Wet Toe (North), Wet Toe (South), Wet Ye, Wetlet, Win Ma Nar, Wunt Ton, Wuntho, Yae Aye, Yae Hpyu, Yae Kan Su, Yae Khar (North), Yae Kyi Pin, Yae Kyi U, Yae Le, Yae Lel Maw, Yae Shin, Yae U Kone, Yae Yin Thar, Yar, Yar Gyi, Yar Za Gyo, Yauk Cho Kwin, Yaung Hee, Yaw, Ye-U, Yi Dway, Yin Dway, Yin Pan, Yinmarbin, Yon Hlay Kone, Ywar Haung, Ywar Koe Gyi, Ywar Ma, Ywar Ma (North), Ywar Mun, Ywar Pu Gyi, Ywar Shey, Ywar Thar, Ywar Thar Gyi, Ywar Thar Yar, Ywar Thit, Ywar Thit (South), Ywar Thit Gyi, Ywar Thit Kone, Ywar Ton (North), Za Yat Kone, Zar Di (East), Zaung Ka Law, Zaw Chaung, Zee Hpyu Kone, Zee Khon, Zee Kone, Zee Pauk, Zee Pin Thar, Zee Taw, Zein Zun (East).

In Shan, 1825 incidents killing 1812 people were reported. The following locations were among the affected: Ah Htet Ma Gyi Pin, Ahr Than, Ayetharyar, Ban Mat, Ban Mat (Kyaung Nar), Bant Bway, Bant Kun, Baw Day, Baw Hseng, Bi Kin, Byein Long (Kachin), Chaung Pong, Chaung Wa, Doe Pin, Ei Naing, Gant Gaw, Goke Hteik, Hkar Shi, Hkawng Ei (North), Hkawng Mong Thit, Hkay Ong Awayt, Hke Mun, Hko Hpeik, Hko Mone, Hko Yawng, Hmaw Bi Kyaung Kone, Ho Et, Ho Hko, Ho Hko (North), Ho Hko (South), Ho Hpei, Ho Kyant, Ho Mein, Ho Nar, Ho Nawng, Ho Peik, Ho Tar, Ho Ti, Ho Ya Ywar Ma, Hopang, Hopong, Hpa Yar Gyi, Hpa Yar Gyi Kone, Hpai Tawng, Hpet Nan, Hsaik Hkawng, Hsaik Hkawng Hti Tat, Hsaik Hkawng Zay Kone, Hsam Ma Hse, Hsan Kar, Hsant Swea, Hsawng Kye, Hsawng Pyaung (East), Hseng Hkun, Hseni, Hsi Aw, Hsi Hson, Hsihseng, Hsin Tawng, Hsint Kin, Hsipaw, Hsut Lan, Hta Min Pawng, Htam Yang (Middle), Htee Kar, Hti Bwar, Hti Hant Tar, Hti Ri (North), Hti Ri Pay, Hti Ta Mawng, Hu Kut, Hway Hkoke, Inn Hpo, Inn Waing, Intaw, Ka Thea, Kan Gyi, Kan Kaing Lel Htun, Kar La, Kawng Haw,

Kawng Huong, Kawng Mawng, Kengtawng, Kho Lam, Khway Haung Done, Kin Chaung, Kone Gyi Ywar Ma, Kone Hsar, Kone Ma Hkan, Kone Nyaung, Kone Paw, Kone Pawng, Kone Son, Kone Thar, Ku Lar Kwe, Kun Hei, Kun Keng, Kun Kyawng, Kunhing, Kunlong, Kutkai, Kyauk Gu Ywar Ma, Kyauk Ka Char, Kyauk Ku Pyin, Kyauk Kyan, Kyauk Mee Hkat, Kyauk Taw, Kyaukme, Kyawng Hkam, Kyawng Pying, La Ei, Laihka, Lar Tein, Lashio, Laukkaing, Lawksawk, Lawt Hkum, Lel Chay, Lel Gyi, Lel Hpwee, Len Hkan (East), Let Khoke Pin, Loi Aun, Loi Hsar, Loi Hseng, Loi Htwea, Loi Kan, Loi Keng, Loi Long, Loi Ma Hkan, Loi Paw, Loi Put Ywar Gyi, Loi Wein, Loi Woe Toke, Loi Yin (Upper), Loilen, Loke Par, Long Kan, Long Kar (Shan), Long San, Long Tar (West), Long Wei, Ma Gyi Yae, Mabein, Mae Han, Man Aing, Man Chet, Man Hawng, Man He, Man Hpwei, Man Hsan Yae Kya, Man Hsant Ywar Ma, Man Hsar, Man Hway, Man Kawng, Man Lan, Man Li, Man Mai, Man Nar, Man Pang (Loi), Man Pat, Man Ping, Man Pwe Long, Man Pying, Man Sat, Man Tat, Mant Mai, Manton, Mat Hki Nu, Mat Kyeng, Mat Man Taw, Mauk Hsa Li, Maw Han, Maw Hit, Mawkmai, Me He, Me Poke, Mee Yei, Min Chaung (East), Min Pa Laung, Moe Bye, Moe Bye Yae Kar Tar, Moe Hlaing, Moe Lone, Moe Tay, Mone Yu (105 Maing), Monekoe, Mong Li, Mong Pun (1), Mong Pying, Mong Yu, Monghsat, Monghsu, Mongkaing, Mongmit, Mongnai, Mongngawt, Mongpan, Mongsi, Mongton, Mongyai, Mongyawng, Muse, Myay Ni, Myin Kya Doe, Myit Son, Myo Thit, Nam Aum, Nam Baw Hkam, Nam Har, Nam Hkaik, Nam Hkun Long (Taung Thone Lone), Nam Hpar Mu, Nam Hpat Kar (Ho Pong + Pang Sa Lorp), Nam Hsawng Hu, Nam Hsawt, Nam Hu, Nam Hu (Gaw Ra Khar), Nam Hu (Koe Kant Htar Par Taw), Nam Hu Nwet, Nam Hu Tawng Ah Htet, Nam Lan, Nam Lin, Nam Loke, Nam Maw, Nam Neint (East), Nam Neint (West), Nam Ngone, Nam Pawng, Nam Say Mye, Nam Tone (Lar Hu), Nam Tun, Namhkan, Namhsan, Namtu, Nan Toke, Nang Bun, Nang Pang (South), Nar Aik Hkant, Nar Hkaik, Nar Hke, Nar Hsawng, Nar Kun Long, Nar Lin, Nar Loi, Nar Ma Hkaw, Nar Pong, Nar San, Nar Sho, Nar Tee, Nat Inn, Naungtayar, Nawng Aw, Nawng Bo, Nawng Htaw Ywar Thit, Nawng Kaw Gyi, Nawng Kyaw, Nawng Leik, Nawng Len, Nawng Ma Long, Nawng Mo, Nawng Mun, Nawng Pat, Nawng Ping, Nawng Ping Lay, Nawng

Ping Zay Kone, Nawng Pyit, Nawng Sa Kar, Nawng San Hpu, Nawng Son, Nawng Tha Kyar, Nawng Thein, Nawng Woe, Nawng Yang, Nawng Yway, Nawngkhio, Ngar Oe, Ngar Pin, Nwar Ban Gyi, Nyaung Lay Pin, Nyaung Ni, Nyaung Pin Sauk, Nyaung Pin Thar, Nyaungshwe, Ohn Kyaw, Ohn Ma Thee, Ong Ma Hkar, Pa Dan, Pan Lon, Pang Awng, Pang Han Gyi, Pang Hat, Pang Hkam, Pang Hkan, Pang Hkar, Pang Hsaw, Pang Hsay, Pang Hseng (Kyu Koke), Pang Hsi Teing, Pang Ku, Pang Lawt, Pang Long Ywar Ma, Pang Mat, Pang Nay, Pang Pawng, Pang Pwe, Pang Shaw, Pang Sit, Pang Son, Pang Tin, Pang War, Pang Yang Hkar, Pang Yawng, Par Hat, Par Neint, Par Poke, Pekon, Pin Hpyit, Pin Ngo (Pin Pet), Pin Pong, Pin Sang, Pindaya, Ping Kan, Pinlaung, Pinlon, Pong Law, Pu Chei (Lower), Pwe Za Meik, Sa Bai Kone, Sa Khan Thar, Sa Ngaw, Sam Hpeik, San Hpu, San Pya, Sang Hsar, Say Long, Se Khaung, Sei Lant, Shauk Chon, Shwe Ku Let Pan Kone, Shwe Kyauk Maw, Shwe Moke Htaw, Shwe San Thit, Shwe Thar Yar, Shwe Zar Li, Shwenyaung, Sun Long, Tachileik, Tan Tee, Tangyan, Tar Shwe Htan, Taung Hteik, Taung Kaing, Taung Kyar, Taung Nauk, Taung Ni, Taung Poet Kwe, Taung Shey, Taung Thu Kone, Taung U, Taunggyi, Tawng Hkam, Tawng Me Thin, Tawt Hsan Ywar Ma, Tha Hpan Kaing, Tha Pyay Kone (Lower), Tha Yet Cho, Tha Yet Kone, Tha Yet Taw, Than Bo, Than Lwin, Thea Khaw, Thein Kone, Thone Se Zay Kone, Ting Long (East), Ton Hsint, Ton Law, Tway Pu, Waing Long, Wan Hai, Wan Kyauk Long, Wan Nar, Wan Sang, Wan Sein Ywar Ma, War Pyar, War Taw, Wein Kawng, Wein Long, Ya Da Nar Pon, Ya Ne, Yae Chan, Yae Hla, Yae Hpyu, Yae Mawng Tan, Yae Pong, Yae Pu, Yae Win, Yang Hkam, Ywangan, Ywar Thit, Za Le Ah Nauk Kone, Za Yang Ywar Ma, Zar Li, Zaw Ti Kone, Zee Hpyu Pin.

In Tanintharyi, 1012 incidents killing 1280 people were reported. The following locations were among the affected: 19 Maing, 22-Maing, 6 Maing, Ah Lel Sa Khan, Auk Kin (East), Auk Kyauk Wut, Auk Tha Yet Chaung, Auk Yae Hpyu, Aung Thar Wa Ra, Aw Gyi, Ban Da Ne (Kan Gyi/Kan Nge), Ban Kyoke, Ban La Mut, Ban Law, Ban Law (East), Ban Lin Myauk, Ban Pyayt, Baw Di Kan, Bokpyin, Chauk Chaung, Chaung Gyi Wa, Chaung Hnit Pauk, Chaung Mon, Chaung Nyi Ko, Chon Chin/Ah Twin Gyi/Sin Hpan, Dawei, Ein Shey Pyin,

Gawt Inn, Gon Hnyin Seik, Gye Taung, Hpaung Taw, Hpawt, Hpwar Boke Pyin, Hta Min Ma Sar, Htein Twin, Hton Kha, Hton Ma Khar, Hton Taw, Inn Shey Kone, Inn Zauk, Ka Baung Taung, Ka De, Ka Det Nge Htein, Ka Myaw Kin, Ka Naing Dar, Ka Nan Kwin, Ka Net Thi Ri, Ka Twe, Ka Zi Ta Dar U, Kaleinaung, Kan Ma Laing, Kan Pauk, Kan To, Karathuri, Kawthoung, Kayin Gyi, Kayin Taung Pyauk, Kha Maung Taw, Khamaukgyi, Khan Ti, Khaung Pyan, Khon Maw, Kin Shey, Koe Inn, Kyauk Hpyu Taung, Kyauk Lone Gyi, Kyauk Me Taung, Kyauk Mee Kyaung, Kyauk Ni Maw, Kyauk Peik, Kyauk Se, Kyauk Sin, Kyauk Thin Baw, Kyaung Neint, Kye, Kyunsu, Kywe Htein Kone, Kywe Htein Kwin, Kywe Min Kone, Kywe Ta Lin, La Maing Kawt, La Thar, Lan Pun Ngan, Launglon, Lawt Thaung, Lay Nyar, Lay Thun Khan, Le Shaung, Leik Kyei Pyaung, Leik Thaung, Lel Hpet, Lel Taung Yar, Lel Thit (East), Lel Thit (West), Let Ku, Let Me, Ma Gyi Kone, Ma Li Wan, Ma Noe Yone, Mar Ran Nawt, Maung Ma Kan, Maung Mei Shaung, Maw Taung, Maw Tone (East), Maw Tone (West), Me Nei Oe, Mee Laung Aw, Mee Laung Chaung, Min Goke, Min Khaung Say, Min Thar, Min Yat, Moke Seik Kwin, Mu Du (East), Mya Lay Pyin, Myauk Chaw, Myauk Pa Ya, Myay Ma Ohn, Myeik, Myitta, Myo Haung, Nan Pa Yoke, Nan Taung, Nyaung Pin Kone, Nyaung Pin Kwin, Nyaung Zin, Nyaw Pyin, Nyin Htwe, Nyin Maw, Ohn Pin Kwin, Oke Tu, Pa Kar Ri, Pa Khat, Pa Nat Nge, Pa Wa Ywar Ma, Pa Wut Kone, Pala, Palauk, Palaw, Pan Da Le, Pan Pyin, Pe Det, Pein Shaung, Pein Taw, Peit Taing, Pu Gaw Zun, Pu Law Kone, Pyigyimandaing, Pyin Gyi, Pyin Hpyu Thar, Pyin Htein, Pyin Kyaung, Pyin Wun, Rar Hpu (Thit), San Hlan, Sar Myein Taung, Seik Chaung, Seik Hpu, Set Pyin Gyi, Set Taw Yar, Shat Pon, Shaw Taw Maw, Shin Moke Tee, Sin Gaung, Sin Htoe Gyi, Sin Ku, Sin Kyan, Sit Bu, Sit Pyea, Son Sin Hpyar, Su Nge Bar Laing Chaung Hpyar, Ta Ku, Ta Moke Chone, Ta Po, Tan Shin, Tanintharyi, Taung Bein, Taung Khaung Laung, Taung Paing Kwin Thit, Taung Pu, Taung Thone Lone, Taung Yar Kan, Taw Shey, Tha Bawt Seik, Tha But Chaung, Tha Byar, Tha Byay Chaung, Tha Kan, Tha Kyet, Tha Kyet Taw, Tha Yet Hnit Khwa, Tha Yet Ngoke, Than Taik, Thar Ra Hpon (East), Thar Ra Hpon (West), Thar Yar Kone, Thauk Kyar Pyin, Thayetchaung, Thea Chaung Gyi, Thein Daw Ywar Ma, Thet Kei Kyin, Thin Gan Taw, Thin Gan Tone, Thin Kyun, Thit Hla Taw, Ti Tut

Pyin, Tone Byaw Gyi, Wa Kone, Waing Taung, War Yit Myan Mar Su, Way Di, Win Ka Hpaw, Ya Mon, Yae Hpyu, Yae Nge (Ya Nge), Yan Hpo, Yan Taung, Yaung Maw, Yebyu, Yin Boke, Ywar Thar Ywar, Za Har, Za Wea, Za Yat Seik, Zar Di, Zin Bar.

In Yangon, 372 incidents killing 87 people were reported. The following locations were among the affected: Ah Lel, Ah Pyin Pa Dan, Ahlone, Auk Kyaung, Bahan, Botahtaung, Dagon, Dagon Myothit (East), Dagon Myothit (North), Dagon Myothit (Seikkan), Dagon Myothit (South), Dala, Dawbon, Hlaing, Hlaingtharya, Hlaw Kar, Hlegu, Hmawbi, Htaukkyant, Insein, Ka Thit Kone, Kamaryut, Kawhmu, Kayan, Ku Lar Kone, Kungyangon, Kyauktada, Kyeemyindaing, Kyet Hpyu Kan, Latha, Mayangone, Mingaladon, Mingalartaungnyunt, North Okkalapa, Nyaung Thone Pin, Pabedan, Sanchaung, Seikgyikanaungto, Shwe Lin Ban, Shwepyithar, South Okkalapa, Taikkyi, Tamwe, Tat Gyi Kone Taung Paing, Thaketa, Than Day Pin, Thanlyin, Thea Hpyu, Thingangyun, Twantay, Yangon, Yankin.

Sources

- ACLED – Armed Conflict Location & Event Data Project: ACLED Methodology and Coding Decisions around Political Violence in Myanmar, June 2022
<https://www.acleddata.com/download/35255/>
- ACLED – Armed Conflict Location & Event Data Project: Armed Conflict Location and Event Data Project Codebook, 2023
https://acleddata.com/acledatanew/wp-content/uploads/dlm_uploads/2023/06/ACLED_Codebook_2023.pdf
- ACLED – Armed Conflict Location & Event Data Project: Asia-Pacific, 7 February 2025
https://acleddata.com/curated-data-files/#Asia-Pacific_2018-2025_Feb07 (visited on 17 February 2025)
- CIA – U. S. Central Intelligence Agency: China and India, 2006
<http://hdl.loc.gov/loc.gmd/g7820.ct002746>
- CIA – U. S. Central Intelligence Agency: Bhutan Administrative, 2012
https://www.cia.gov/library/publications/resources/cia-maps-publications/map-downloads/Bhutan_Admin.pdf
- GADM – Global Administrative Areas: gadm36_levels.shp, Version 3.6, 6 May 2018a
http://biogeo.ucdavis.edu/data/gadm3.6/gadm36_levels.shp.zip
- GADM – Global Administrative Areas: gadm36_MMR.shp.zip, Version 3.6, 6 May 2018b
http://biogeo.ucdavis.edu/data/gadm3.6/shp/gadm36_MMR.shp.zip

- Natural Earth: Admin 0 – Breakaway, Disputed Areas, Version 3.1.0, undated
http://www.naturalearthdata.com/http://www.naturalearthdata.com/download/10m/cultural/ne_10m_admin_0_disputed_areas.zip
- Smith, Walter H. F. and Wessel, Paul: Global Self-consistent Hierarchical High-resolution Geography (GSHHG), Version 2.3.4, 1 May 2015
<https://www.ngdc.noaa.gov/mgg/shorelines/data/gshhg/latest/>

Disclaimer

ACLED data undergoes several rounds of review before publication and is continually updated as new events are added and existing events are revised as new information becomes available. Updates in ACLED's datasets will not necessarily be reflected in ACCORD's reports if the update occurs close to or after the latter's publication. Changes in the sources used by ACLED to collect incident data might affect the comparability of data over time. For more information on ACCORD's products based on the data, please see the [ecoi.net blog posts tagged with "ACLED"](#). The lack of information on an event in this report does not permit the inference that it did not take place. The boundaries and names displayed do not imply endorsement or acceptance by the Austrian Red Cross.

Cite as

- ACCORD – Austrian Centre for Country of Origin & Asylum Research and Documentation: Myanmar, year 2024: Update on incidents according to the Armed Conflict Location & Event Data Project (ACLED), 17 February 2025