

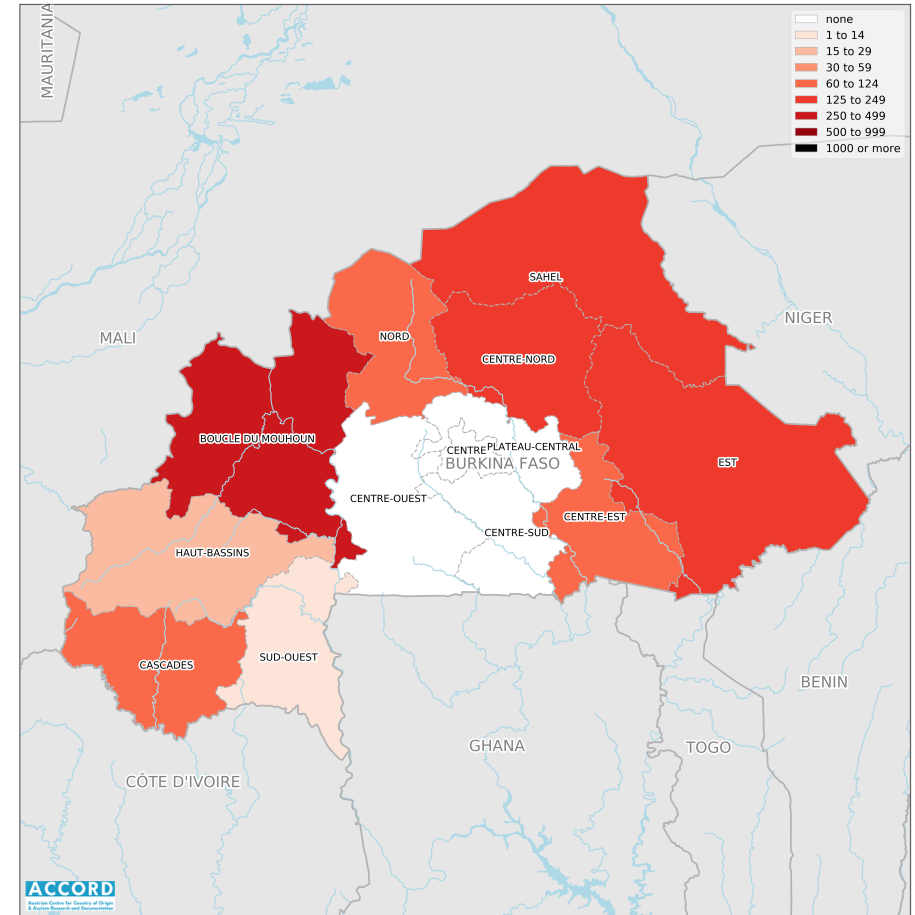
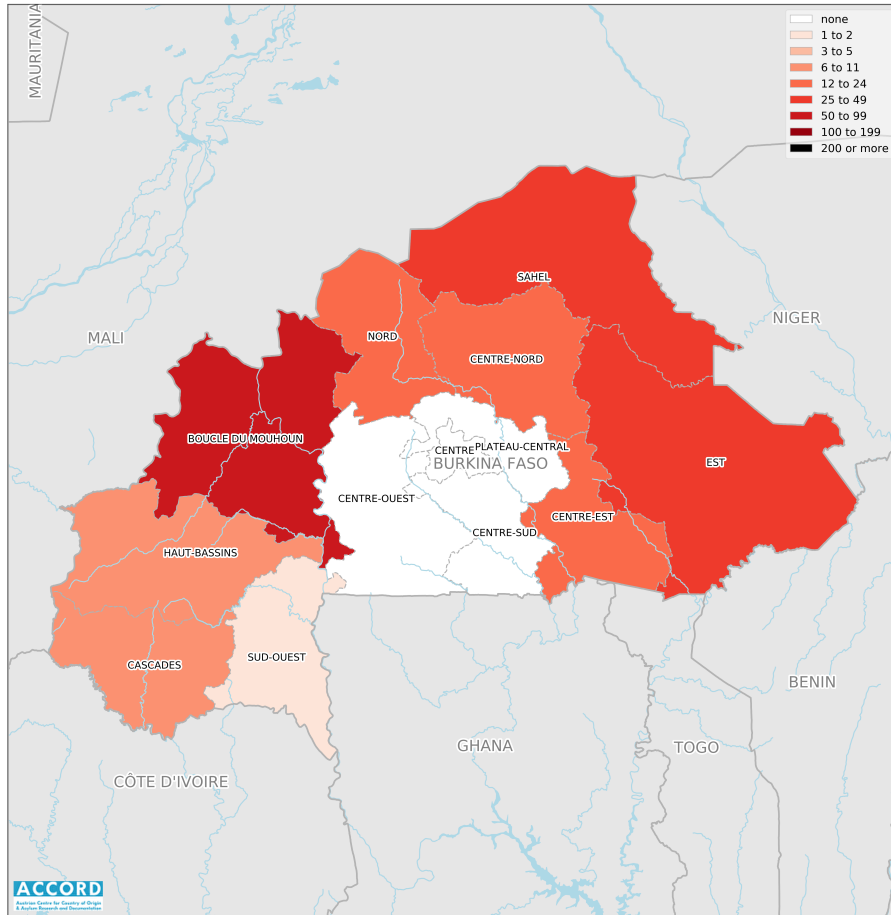
# BURKINA FASO, FOURTH QUARTER 2024:

Update on incidents according to the Armed Conflict Location & Event Data Project (ACLED)

compiled by ACCORD, 5 February 2025

## Number of reported incidents with at least one fatality

## Number of reported fatalities



National borders: [GADM, 6 May 2018b](#); administrative divisions: [GADM, 6 May 2018a](#); incident data: [ACLED, 31 January 2025](#); coastlines and inland waters: [Smith and Wessel, 1 May 2015](#)

## Contents

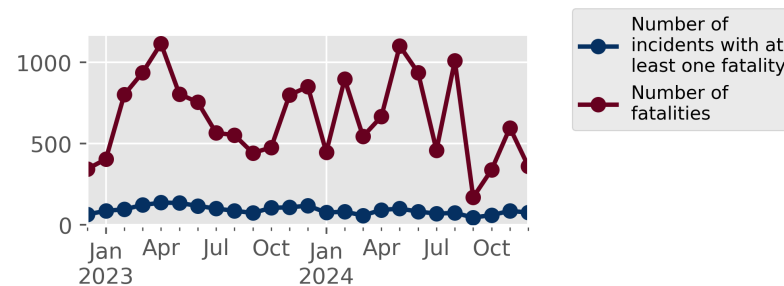
Number of reported fatalities	1
Number of reported incidents with at least one fatality	1
Conflict incidents by category	2
Development of conflict incidents from December 2022 to December 2024	2
Methodology	3
Conflict incidents per province	4
Localization of conflict incidents	4
Disclaimer	6

## Conflict incidents by category

Category	Number of incidents	Number of incidents with at least one fatality	Number of fatalities
Battles	163	123	849
Explosions / Remote violence	82	51	211
Violence against civilians	70	43	233
Strategic developments	57	1	1
Protests	26	0	0
Riots	2	1	1
<b>Total</b>	<b>400</b>	<b>219</b>	<b>1295</b>

This table is based on data from ACLED (datasets used: [ACLED](#), 31 January 2025).

## Development of conflict incidents from December 2022 to December 2024



This graph is based on data from ACLED (datasets used: [ACLED](#), 31 January 2025).

## Methodology

The data used in this report was collected by the Armed Conflict Location & Event Data Project (ACLED). Based on a variety of sources, ACLED collects data on reported conflict events around the world and provides publicly available event-based datasets. ACLED data contains information on the event type, the date, location, involved actors, and other characteristics of the incident. Most of the data collected by ACLED is gathered based on publicly available reports. As information on fatalities is subject to bias and can vary between sources for the same event, ACLED employs “the most conservative and reliable fatality estimate available”. ACLED uses the reports’ context to estimate fatalities for events with reported fatalities for which the exact number is unknown (“3” or “10” for plural fatalities, depending on the context; “100” if “hundreds” are mentioned, etc.). For further details on ACLED and for the full data, see [www.acleddata.com](http://www.acleddata.com) and [ACLED, 2023](#).

Based on this data, the Austrian Centre for Country of Origin & Asylum Research and Documentation (ACCORD) compiles updates on conflict incidents and publishes them on [ecoi.net](http://ecoi.net) to offer another access point to the ACLED datasets.

It is advised to employ extreme caution when using fatality numbers.

Assessments of the security situation should not be based solely on quantitative analysis of event data.

Geographic map data is primarily based on GADM, complemented with other sources if necessary. Incidents are mapped to GADM provinces using the provinces in ACLED data. Province names and borders may differ between ACLED and GADM. Incidents that could not be located are ignored. The numbers included in this overview might therefore differ from the original ACLED data. ACLED uses varying degrees of geographic precision for the individual incidents, depending on what level of detail is reported. Thus, towns may represent the wider region in which

an incident occurred, or the provincial capital may be used if only the province is known. Erroneous location data, especially due to identical place names, cannot be fully excluded.

Incidents comprise the following categories: battles, violence against civilians, remote violence, riots/protests, non-violent strategic activities. For details on these categories, please see

- ACLED – Armed Conflict Location & Event Data Project: Armed Conflict Location and Event Data Project Codebook, 2023a  
[https://acleddata.com/acledatanew/wp-content/uploads/dlm\\_uploads/2023/06/ACLED\\_Codebook\\_2023.pdf](https://acleddata.com/acledatanew/wp-content/uploads/dlm_uploads/2023/06/ACLED_Codebook_2023.pdf)
- ACLED – Armed Conflict Location & Event Data Project: FAQs: ACLED Fatality Methodology, January 2023b  
[https://acleddata.com/acledatanew/wp-content/uploads/2023/01/FAQs-ACLED-Fatality-Methodology\\_2023.pdf](https://acleddata.com/acledatanew/wp-content/uploads/2023/01/FAQs-ACLED-Fatality-Methodology_2023.pdf)
- ACLED – Armed Conflict Location & Event Data Project: Quick Guide to ACLED Data, March 2023c  
<https://acleddata.com/resources/quick-guide-to-acled-data/>

## Conflict incidents per province

Province	Number of incidents	Number of incidents with fatalities	Number of fatalities
Boucle du Mouhoun	97	64	381
Cascades	11	8	60
Centre	2	0	0
Centre-Est	45	18	73
Centre-Nord	42	23	162
Centre-Ouest	1	0	0
Centre-Sud	1	0	0
Est	82	34	236
Haut-Bassins	13	6	27
Nord	28	17	110
Plateau-Central	1	0	0
Sahel	71	48	238
Sud-Ouest	6	1	8

## Localization of conflict incidents

**Note:** The following list is an overview of the incident data included in the ACLED dataset. More details are available in the actual dataset (date, location data, event type, involved actors, information sources, etc.). The data's precision varies among the incidents: a town may represent a region, or the provincial capital may be used if the precise location of an incident is unknown. In the following list, the names of event locations are taken from ACLED, while the administrative region names are taken from GADM data (with the exception of Iraq) which serves as the basis for the maps above.

In **Boucle du Mouhoun**, 97 incidents killing 381 people were reported. The following locations were among the affected: **Ban, Barani, Bare, Baye, Bekuy, Biron Bobo, Bokuy, Bomborokui, Bondokuy, Bonou, Bonza, Borekuy, Bouakuy, Boule, Bourasso, Daboura, Dedougou, Dina, Dio, Djibasso, Dokui, Doumbala, Gala, Gomboro, Gossina, Karekuy, Kari, Kawara, Kera, Kie, Koena, Kolokan, Konankoirra, Konkuy-Koro, Koroni, Kouasse, Koumana, Koury, Lery, Mantamou, Melou, Mounakoro, Nabasso, Nemena, Nouna, Oualou, Pasmam, Pia 1, Poro, Priwe, Sadigan, Saga, Sami, Sanaba, Sanakui, Silmimossi, Soin, Solenzo, Soumoukuy, Toma, Tonkoroni, Tougan, Toula, Yasso, Ye.**

In **Cascades**, 11 incidents killing 60 people were reported. The following locations were among the affected: **Banfora, Belegogo, Diaya, Dida Forest, Kpala, Massade-Yirikoro, Noumoukiedougou, Ouo, Sassamba, Tiefora.**

In **Centre**, 2 incidents killing 0 people were reported. The following location was among the affected: **Ouagadougou.**

In **Centre-Est**, 45 incidents killing 73 people were reported. The following locations were among the affected: **Bagre, Bane, Bilemtenga, Binguimnoguen, Bittou, Boumbin, Boussougou, Datou, Diougo, Garanga, Gaskom, Gngangdin, Goguen, Kangretenga, Kiougou-Doure, Kogo, Konzeogo, Koulsonde, Koundoghin, Lobden, Modaogo 1, Nabangou, Nai, Nanonghin, Ouada-V1, Ouargaye, Ouarweogo, Sab-Rado, Sakango, Sangha, Sologo 1, Sologo 2, Tenkodogo, Tinonguen, Tiourel, Yargatenga.**

In **Centre-Nord**, 42 incidents killing 162 people were reported. The following locations were among the affected: **Basma, Boko, Bonam, Boulounga, Bourzanga, Forgui, Ga, Kalamba, Kaya, Namissiguima, Namssiguia, Nawoubkiba, Niangado, Noh, Ouanobian, Pensa, Pibaore, Silmangue, Songodin, Tafogo, Talle-Mossi, Taparko, Tikare, Tougouri, Wanbsouya, Zeguedeguen, Zimsa.**

BURKINA FASO, FOURTH QUARTER 2024: UPDATE ON INCIDENTS ACCORDING TO THE ARMED CONFLICT LOCATION & EVENT DATA PROJECT (ACLED)  
COMPILED BY ACCORD, 5 FEBRUARY 2025

In **Centre-Ouest**, 1 incident killing 0 people was reported. The following location was among the affected: **Bourou**.

In **Centre-Sud**, 1 incident killing 0 people was reported. The following location was among the affected: **Po**.

In **Est**, 82 incidents killing 236 people were reported. The following locations were among the affected: **Badore, Bassambily, Bilanga, Bilanga-Yanga, Bogande, Boungou, Coalla, Diabiga, Diabonli, Diaka, Diamanga, Diapaga, Doaligou, Fada NGourma, Fanwaligou, Gabidou, Gayeri, Kantchari, Koare, Komandougou, Kompienga, Kongaye, Kossougoudou, Kouri, Manni, Nagare, Namounou, Nassougou, Ougarou, Partiaga, Piela, Saatenga, Sorga, Tagou, Tamboangou, Tangayiri, Tanwalbougou, Tatiangou, Tibga, Yamba**.

In **Haut-Bassins**, 13 incidents killing 27 people were reported. The following locations were among the affected: **Bereba, Bobo-Dioulasso, Dankari, Famberla, Hounde, Kabala, Lamba, Morolaba, Samorogouan, Sintasso, Zitonosso**.

In **Nord**, 28 incidents killing 110 people were reported. The following locations were among the affected: **Aorema, Bango, Banh, Bougounam, Boussou, Cissin, Dinguila, Kobo, Koumbri, Namissiguima, Ouahigouya, Rambo, Rega, Solle, Thiou, Titao, Tougue-Peulh, Yabonsgo, You, Youba, Zogore**.

In **Plateau-Central**, 1 incident killing 0 people was reported. The following location was among the affected: **Nagreongo**.

In **Sahel**, 71 incidents killing 238 people were reported. The following locations were among the affected: **Adoudie, Arbinda, Bangaba, Bani, Batibogou, Boullel, Bouloye, Bourou, Dambam, Diouga, Djibo, Dori, Falagountou, Felleol, Gargaboule, Gorgadji, Goseye-Site, Goudoubo, Gountoure Kiri, Katchirga, Kelbo, Koriam, Korizena, Markoye, Mentao, Nassoumbou, Oursi, Pobe Mengao,**

**Sampelga, Sebba, Seno-Tiondi, Silgueye, Sokoundou, Solhan, Tani, Taouremba, Tidyala, Tin-Akoff, Titabe, Waboti 1, Wendou, Yebelba**.

In **Sud-Ouest**, 6 incidents killing 8 people were reported. The following locations were among the affected: **Bouroum Bouroum, Djatakoro, Helintira, Loropeni**.

## Sources

- ACLED – Armed Conflict Location & Event Data Project: Armed Conflict Location and Event Data Project Codebook, 2023  
[https://acleddata.com/acleddatanew/wp-content/uploads/dlm\\_uploads/2023/06/ACLED\\_Codebook\\_2023.pdf](https://acleddata.com/acleddatanew/wp-content/uploads/dlm_uploads/2023/06/ACLED_Codebook_2023.pdf)
- ACLED – Armed Conflict Location & Event Data Project: Africa, 31 January 2025  
[https://acleddata.com/curated-data-files/#Africa\\_1997-2025\\_Jan31](https://acleddata.com/curated-data-files/#Africa_1997-2025_Jan31)  
(visited on 5 February 2025)
- GADM – Global Administrative Areas: gadm36\_BFA\_shp.zip, Version 3.6, 6 May 2018a  
[http://biogeo.ucdavis.edu/data/gadm3.6/shp/gadm36\\_BFA\\_shp.zip](http://biogeo.ucdavis.edu/data/gadm3.6/shp/gadm36_BFA_shp.zip)
- GADM – Global Administrative Areas: gadm36\_levels.shp, Version 3.6, 6 May 2018b  
[http://biogeo.ucdavis.edu/data/gadm3.6/gadm36\\_levels.shp.zip](http://biogeo.ucdavis.edu/data/gadm3.6/gadm36_levels.shp.zip)
- Smith, Walter H. F. and Wessel, Paul: Global Self-consistent Hierarchical High-resolution Geography (GSHHG), Version 2.3.4, 1 May 2015  
<https://www.ngdc.noaa.gov/mgg/shorelines/data/gshhg/latest/>

## Disclaimer

ACLED data undergoes several rounds of review before publication and is continually updated as new events are added and existing events are revised as new information becomes available. Updates in ACLED's datasets will not necessarily be reflected in ACCORD's reports if the update occurs close to or after the latter's publication. Changes in the sources used by ACLED to collect incident

data might affect the comparability of data over time. For more information on ACCORD's products based on the data, please see the [ecoi.net blog posts tagged with "ACLED"](#). The lack of information on an event in this report does not permit the inference that it did not take place. The boundaries and names displayed do not imply endorsement or acceptance by the Austrian Red Cross.

## Cite as

- ACCORD – Austrian Centre for Country of Origin & Asylum Research and Documentation: Burkina Faso, fourth quarter 2024: Update on incidents according to the Armed Conflict Location & Event Data Project (ACLED), 5 February 2025