

CONTEXTE OPERATIONNEL

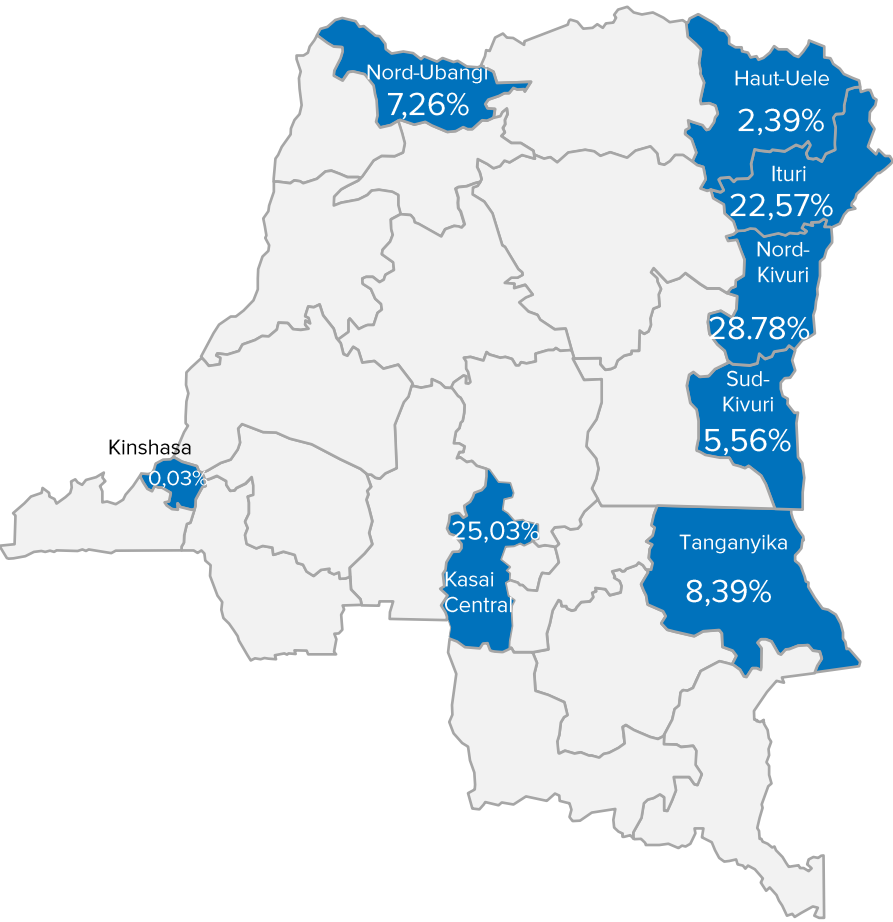
Since the beginning of 2024, over 128,000 people have been newly displaced in the Democratic Republic of the Congo (DRC), bringing the total to approximately 7.3 million displaced individuals. Among them, women represent 51% of the displaced population. These displacements are primarily due to attacks and armed clashes.

As of June 30, 2024, the operation in the DRC includes 526,509 refugees and asylum seekers, 52% of whom are women and girls.

The situation of refugee and displaced women and girls in the DRC remains concerning, particularly in the eastern part of the country where cyclical conflicts are ongoing. They are exposed to multiple protection risks, especially when caught in armed conflicts. The protection challenges they face are diverse, and it is crucial to implement responses tailored to their specific needs.

The latest participatory assessment using the AGD approach revealed that women and girls are more exposed to gender-based violence and gender equality issues. UNHCR and its partners are providing and continuing to strengthen interventions on GBV, focusing on prevention, risk mitigation, and response, in close collaboration with other actors and community organizations, specifically women’s organizations.

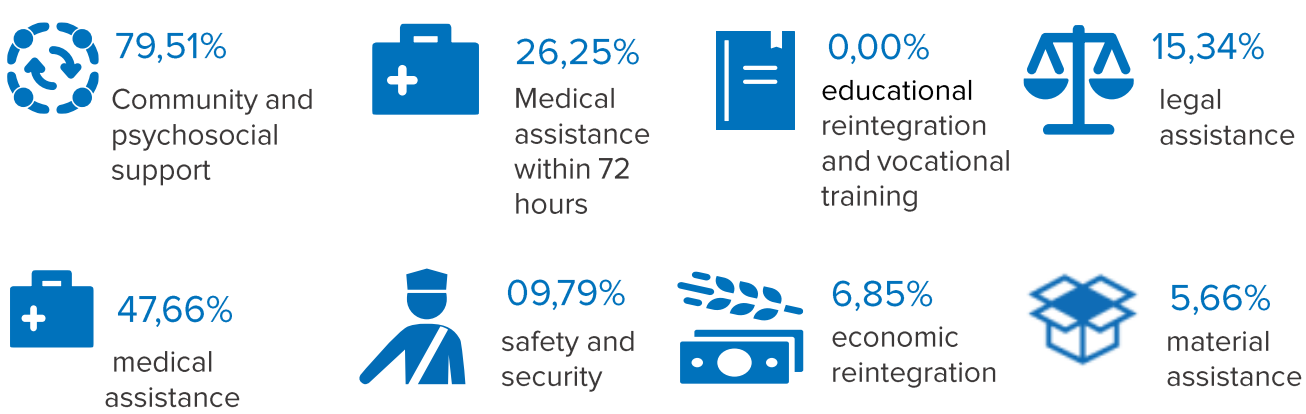
PERCENTAGE OF GBV INCIDENTS BY PROVINCE



KEY FIGURES

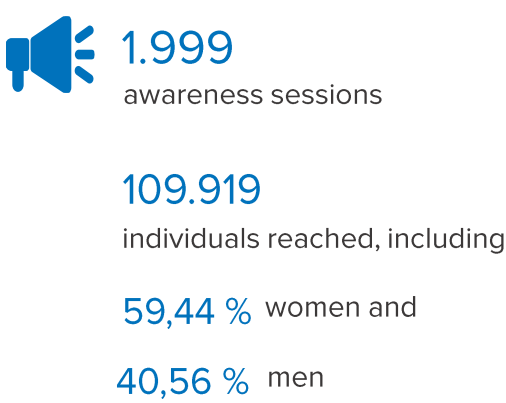


RESPONSES IMPLEMENTED

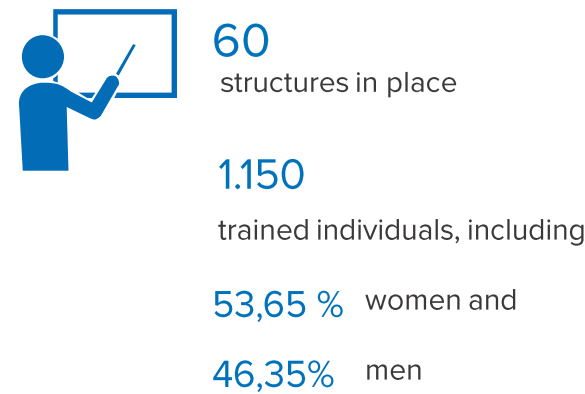


PREVENTION ACTIVITIES

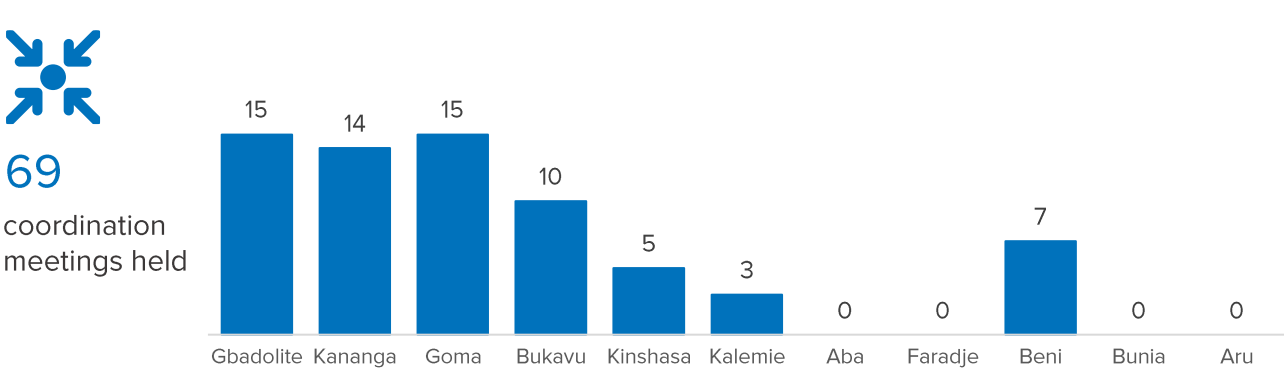
INFORMATION CAMPAIGNS



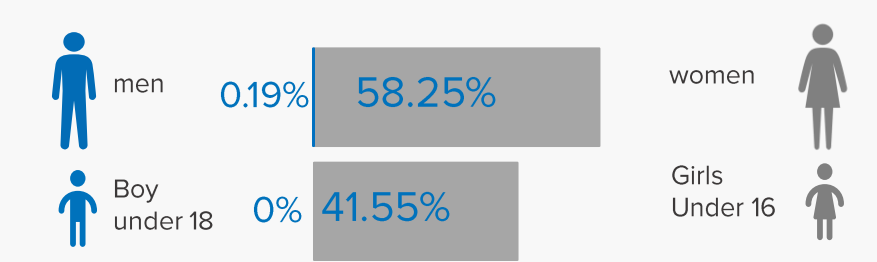
TRAINING



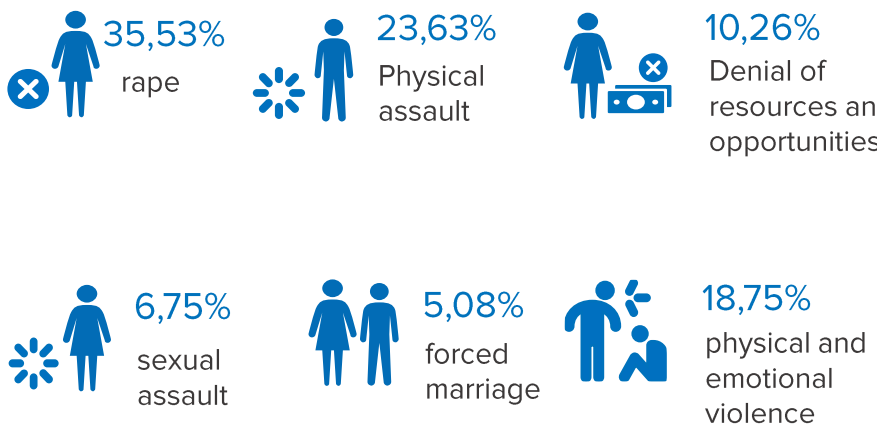
COORDINATION MEETINGS



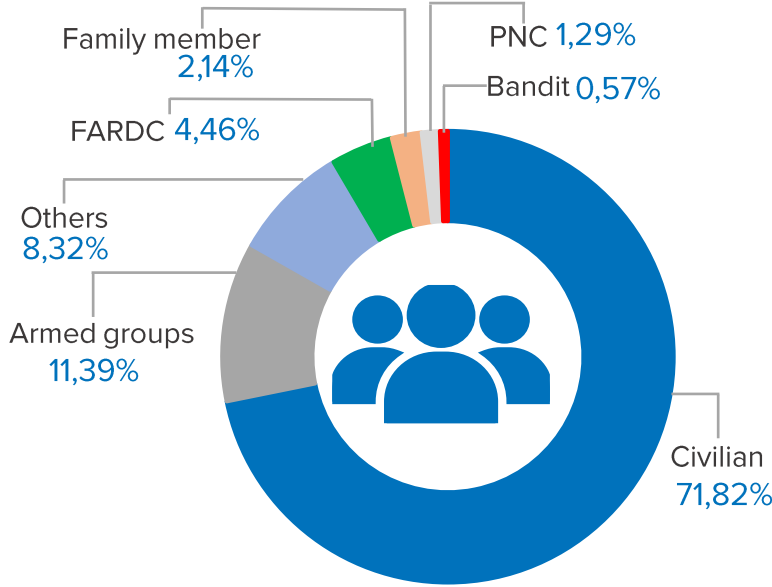
AGE AND GENDER OF SURVIVORS



CATEGORIES OF REPORTED GBV INCIDENTS



ALLEGED PERPETRATORS OF GBV INCIDENTS



% OF SURVIVOR BY POPULATION TYPE

