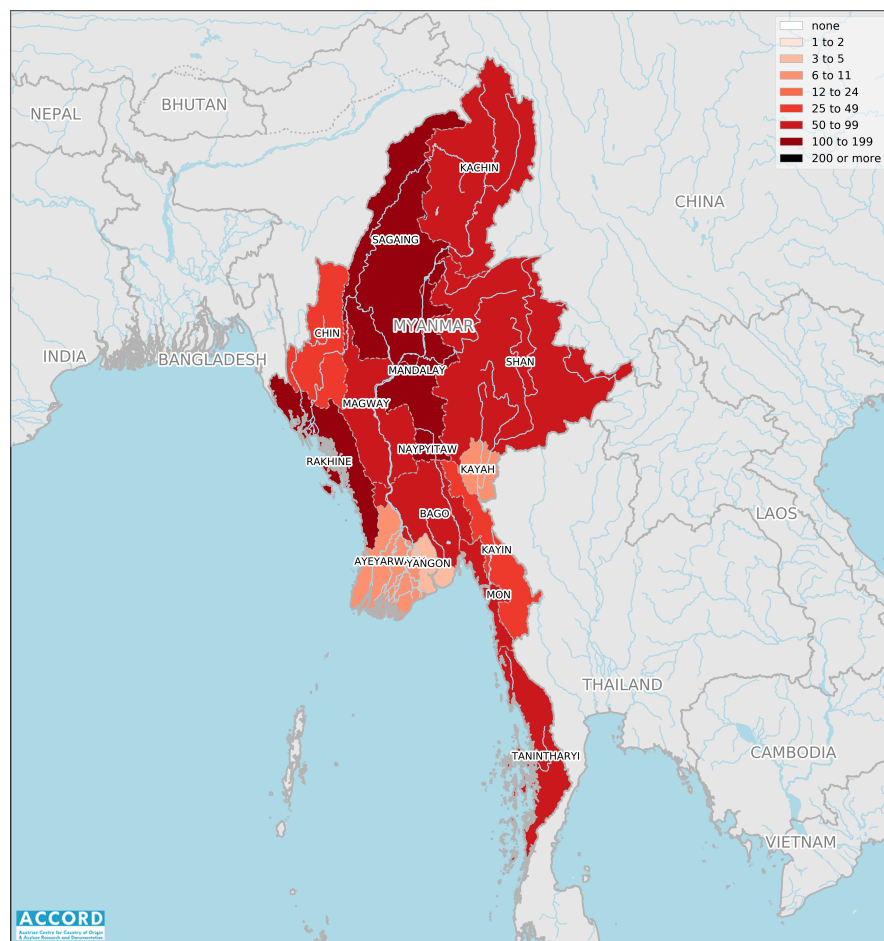


# MYANMAR, SECOND QUARTER 2024:

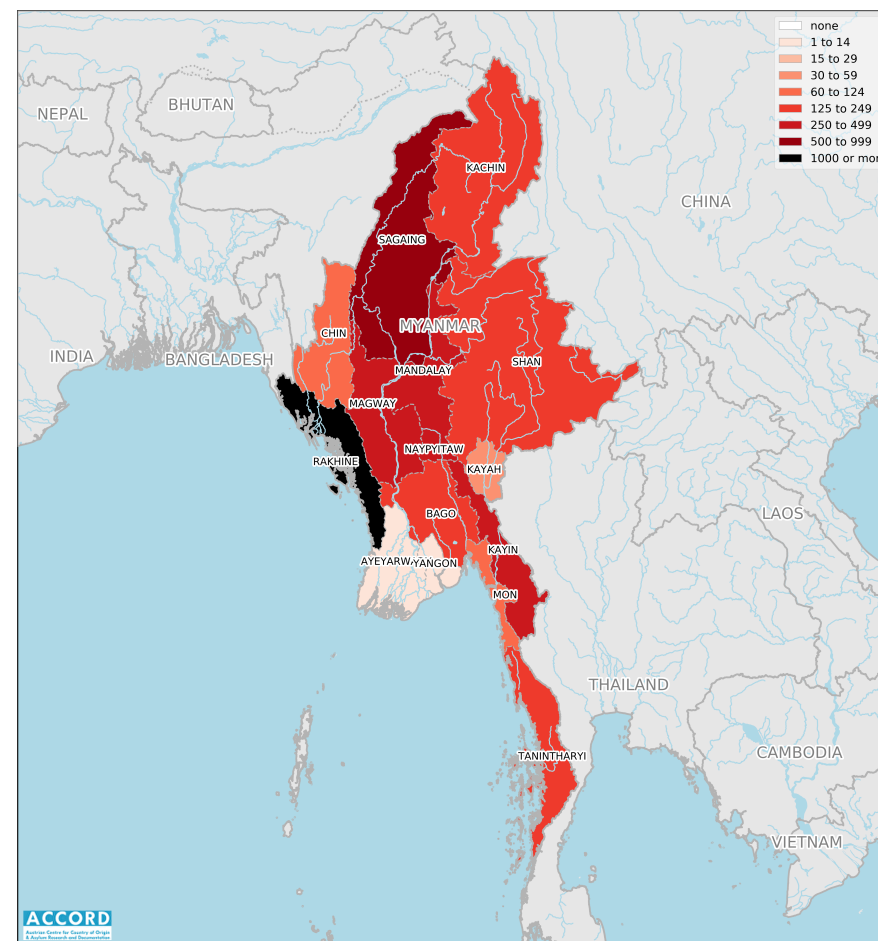
Update on incidents according to the Armed Conflict Location & Event Data Project (ACLED)

compiled by ACCORD, 7 August 2024

## Number of reported incidents with at least one fatality



## Number of reported fatalities



National borders: [GADM, 6 May 2018a](#); administrative divisions: [GADM, 6 May 2018b](#); Bhutan/China border status: [CIA, 2012](#); China/India border status: [CIA, 2006](#); geodata of disputed borders: [GADM, 6 May 2018a](#); [Natural Earth, nodate](#); incident data: [ACLED, 26 July 2024](#); coastlines and inland waters: [Smith and Wessel, 1 May 2015](#)

Contents

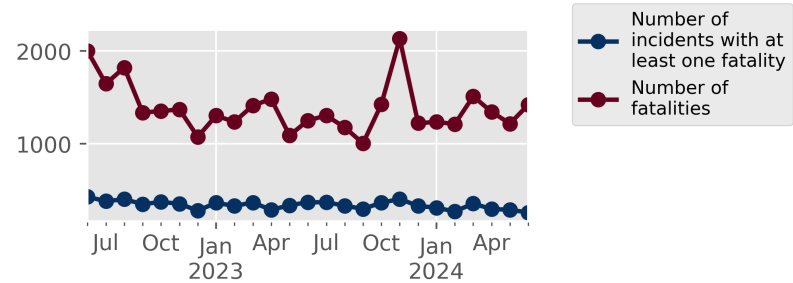
Number of reported fatalities	1
Number of reported incidents with at least one fatality	1
Conflict incidents by category	2
Development of conflict incidents from June 2022 to June 2024	2
Methodology	3
Conflict incidents per province	4
Localization of conflict incidents	4
Disclaimer	8

Conflict incidents by category

Category	Number of incidents	Number of incidents with at least one fatality	Number of fatalities
Explosions / Remote violence	1000	313	863
Battles	960	367	2743
Strategic developments	530	2	4
Violence against civilians	297	168	367
Protests	42	1	5
Total	2829	851	3982

This table is based on data from ACLED (datasets used: [ACLED](#), 26 July 2024).

Development of conflict incidents from June 2022 to June 2024



This graph is based on data from ACLED (datasets used: [ACLED](#), 26 July 2024).

## Methodology

The data used in this report was collected by the Armed Conflict Location & Event Data Project (ACLED). Based on a variety of sources, ACLED collects data on reported conflict events around the world and provides publicly available event-based datasets. ACLED data contains information on the event type, the date, location, involved actors, and other characteristics of the incident. Most of the data collected by ACLED is gathered based on publicly available reports. As information on fatalities is subject to bias and can vary between sources for the same event, ACLED employs “the most conservative and reliable fatality estimate available”. ACLED uses the reports’ context to estimate fatalities for events with reported fatalities for which the exact number is unknown (“3” or “10” for plural fatalities, depending on the context; “100” if “hundreds” are mentioned, etc.). For further details on ACLED and for the full data, see [www.acleddata.com](http://www.acleddata.com) and [ACLED, 2023](#).

Based on this data, the Austrian Centre for Country of Origin & Asylum Research and Documentation (ACCORD) compiles updates on conflict incidents and publishes them on [ecoi.net](http://ecoi.net) to offer another access point to the ACLED datasets.

It is advised to employ extreme caution when using fatality numbers.

Assessments of the security situation should not be based solely on quantitative analysis of event data.

Please see ACLED’s additional methodological paper for Myanmar: [ACLED, June 2022](#)

ACLED’s administrative (sub-)divisions of Bago-East and Bago-West, as well as Shan-East, Shan-North and Shan-South have been subsumed under Bago, resp. Shan.

Geographic map data is primarily based on GADM, complemented with other sources if necessary. Incidents are mapped to GADM provinces using the provinces in ACLED data. Province names and borders may differ between ACLED and GADM. Incidents that could not be located are ignored. The numbers included in this overview might therefore differ from the original ACLED data. ACLED uses varying degrees of geographic precision for the individual incidents, depending on what level of detail is reported. Thus, towns may represent the wider region in which an incident occurred, or the provincial capital may be used if only the province is known. Erroneous location data, especially due to identical place names, cannot be fully excluded.

Incidents comprise the following categories: battles, violence against civilians, remote violence, riots/protests, non-violent strategic activities. For details on these categories, please see

- ACLED – Armed Conflict Location & Event Data Project: Armed Conflict Location and Event Data Project Codebook, 2023a  
[https://acleddata.com/acleddatanew/wp-content/uploads/dlm\\_uploads/2023/06/ACLED\\_Codebook\\_2023.pdf](https://acleddata.com/acleddatanew/wp-content/uploads/dlm_uploads/2023/06/ACLED_Codebook_2023.pdf)
- ACLED – Armed Conflict Location & Event Data Project: FAQs: ACLED Fatality Methodology, January 2023b  
[https://acleddata.com/acleddatanew/wp-content/uploads/2023/01/FAQs-ACLED-Fatality-Methodology\\_2023.pdf](https://acleddata.com/acleddatanew/wp-content/uploads/2023/01/FAQs-ACLED-Fatality-Methodology_2023.pdf)
- ACLED – Armed Conflict Location & Event Data Project: Quick Guide to ACLED Data, March 2023c  
<https://acleddata.com/resources/quick-guide-to-acled-data/>

## Conflict incidents per province

Province	Number of incidents	Number of incidents with fatalities	Number of fatalities
Ayeyarwady	36	6	6
Bago	146	68	192
Chin	108	30	70
Kachin	271	50	154
Kayah	27	11	56
Kayin	127	42	452
Magway	205	95	313
Mandalay	256	100	328
Mon	152	51	96
Naypyitaw	11	4	31
Rakhine	549	116	1189
Sagaing	409	147	611
Shan	331	73	247
Tanintharyi	147	55	229
Yangon	54	3	8

## Localization of conflict incidents

**Note:** The following list is an overview of the incident data included in the ACLED dataset. More details are available in the actual dataset (date, location data, event type, involved actors, information sources, etc.). The data's precision varies among the incidents: a town may represent a region, or the provincial capital may be used if the precise location of an incident is unknown. In the following list, the names of

event locations are taken from ACLED, while the administrative region names are taken from GADM data (with the exception of Iraq) which serves as the basis for the maps above.

In **Ayeyarwady**, 36 incidents killing 6 people were reported. The following locations were among the affected: Ahthoke, Bogale, Danubyu, Hainggyikyun, Hinthada, Kyaiklat, Kyangin, Kyee Pin, Labutta, Maubin, Mawlamyinegyun, Ngapudaw, Ngathaingchaung, Nyaungdon, Pathein, Pyapon, Shar Khe Ywar Ma, Shwe Laung Ywar Ma, Tar Pyat, Taung Ka Lay, Thauk Kyar Du, Yan Kin San Yar (Ah Nauk Kyun), Ywar Thit Kone.

In **Bago**, 146 incidents killing 192 people were reported. The following locations were among the affected: Ah Htet Myet Ni Kwin, Baw Ka Htar, Bu Bet, Daik-U, Dar Thway Kyauk, Gyobingauk, Hlay Done, Hpa Yar Gyi, Hpa Yar La Har, Hpa Yar Pyo, Hpaung Tin, Hswar, Htan Pin Chaung, Htan Pin Kone, Htwa Ni Kone, In Kwin, In Pin Hla, Inn Ba Lar, Ka Zin Pin, Kanyutkwin, Kauk Kwayt, Kauk Mei Thu, Khin Tan, Khin Tan Gyi, Kone Thar, Kone Ywar, Kun Chan, Kun Pin, Kwin Da La Lay, Kyauk Khe Gyi, Kyauk Lone Gyi, Kyaukkyi, Kyauktaga, Kyein Khar Kone, Kyet Tet Nyaung Pin, Kyoet Pin, Kyoet Pin Waing, Kyun Gyi, Kywe Nwe Goke, Lay Ein Su, Letpadan, Mee Chaung Tin, Minhla, Mone, Monyo, Nat Sin Kone, Nattalin, Nga Toe Khin (Kayin), Nyaung Aing, Nyaung Kaing, Nyaung Pin Gyi Ywar Ma, Nyaung Tan, Nyaung Zin, Nyaunglebin, Oke Hpo Su, Oke Shit Khin (West), Oke Shit Pin, Okpho, Pa De, Padaung, Pauk Aing Gyi, Pauk Kone, Pauk Tan (Ah Lel Su), Paukkhaung, Paungdale, Paungde, Pe Nwe Kone Ywar Ma, Phyu, Pi Tauk Kone, Pyan Chi Tet, Pyay, Pyin Pon, Saing Ti Su, Set Su, Shwegyin, Sin Ta Lin, Swar Ywar Ma, Tar Pun, Taung Tha Pyay Kan, Tha Hpan Kaing, Tha Min Inn Kone, Tha Nat Tan, Tha Yet Chin, Than Seik Ywar Ma, Thayarwady, Thea Kone, Thit Poke, Thonse, Tone Taw, Waw, Waw Shan Su, Wet Khauk Sein, Yae Kyi Chaung, Yae Ngan, Yay Le (Myanmar), Yedashe, Yoke Saing, Ywar Lay Kone, Ywar Ma, Ywar Thit, Zee Kone.

In **Chin**, 108 incidents killing 70 people were reported. The following locations

were among the affected: Amsoi, Auk Chaing, Baung Ku Wa, Chat, Chin Let Mun, Cikha, Falam, Hakha, Hpyan Chaung, Kanpetlet, Kha Wea, Khoke, Kyin Dway, Lamzang, Leik Khaung, Lun Don, Lungtak, Mainuai, Matupi, Mindat, Mualbe, Ngaling, Paletwa, Phaitu, Rezua, Rihkhawdar, Samee, Sozang, Ta Run Aing (Ywar Thit), Taingen, Tedim, Thantlang, Tonzang, Ung, Vangteh, Var Sa Khan, Vawmm'tu.

In Kachin, 271 incidents killing 154 people were reported. The following locations were among the affected: Auk Maw Hpawng, Aung Myay (1), Aung Myay (2), Bang Daung, Bhamo, Chaung Wa, Chipwi, Da Bat Yang, Dar Hseng, Ga Gam, Gwayt Gyi, Gwei Ka Htaung, Han Htet, Hka Lar Yang, Hkar Shi, Hkat Shu, Hku Li, Ho Kat, Hopin, Hpa Raw, Hpakant, Hseng Taung (Ywar Haung), Hsin Hkan, Hway Long, Inn Lay, Jang Mai, Ka Tsu, Kan Ba Ni, Kan Paik Ti, Kawng Gyar Yang, Kyauk Sa Khan (Kachin), Kyaw Hkawng, La Bang, La Hpai, Lai Zar, Long Hkin, Long Ja, Lu Myan, Lwegel, Ma Au Pin, Man Pong, Man Wein, Mansi, Maw Hpawng, Moe Hping, Mohnyin, Momauk, Mong Nar, Myaing Ywar, Myin Thar, Myitkyina, Myo Kone, Myo Thit, Nam Hkam Par, Nam Hlaing, Nam Ma Hpyit, Nam Si In, Nam War, Nam Ya, Nawng Laik, Nawng Si Paw, Nawng Ta Law, Nyaung Pin, Puta-O, Sa Ni Khu, Sadung, San Kar, San Pai, Se Zin, Seik Mu, Sein Long, Sha Ngaw, Shwe Nyaung Pin, Si Het, Sinbo, Sumprabum, Ta Law Gyi, Tan Ja, Tanai, Tar Pa Daung, Tsawlaw, Tsum Pi Yang, Waingmaw, War Dat, War Shawng, Wu Yang, Zin Bon.

In Kayah, 27 incidents killing 56 people were reported. The following locations were among the affected: Bawlake, Demoso, Hpasawng, Kone Thar, Loikaw, Loilen Lay, Nan Hpe, Par Pu, Pu Hpar.

In Kayin, 127 incidents killing 452 people were reported. The following locations were among the affected: Bo Khar Lay Kho, Hpapun, Hpar Chaung (Ah Twin Me Ka Nei), Hpar Pya, Hpayarthonesu, Htee Kyu, Hti Hpoe Zan, Kawkareik, Kawt Bein, Kawt Nwe, Kwin Ka Lay, Kyaikdon, Kyainseikgyi, Kyondoe, Lay Kay Kaw, Leik Tho, Maung Ma Ywar Thit, Me Ka Nei Lan, Me Waing, Mi Par

Le, Mya Pa Taing, Mya Pa Taing Naing, Myawaddy, Myo Haung, Naw Hpar Do, Noet Aw Lar, Paw Law, Pyar Sa Khan, Sin Pyay, Su Ka Li, Taung Sun, Than Pu Yar, Thandaunggyi, Thay Baw Boe, Thin Gan Nyi Naung, Whayt Shan, Win Da Yei, Ya Thayt Gu, Yae Pu Gyi, Yan Koke, Ywar Thit.

In Magway, 205 incidents killing 313 people were reported. The following locations were among the affected: Ah Htet Kyaw, Ah Kyi Pan Pa Lun, Aung Myin, Aunglan, Bon Ma, Chaing, Chan Thar Gyi, Chaung Ku, Gangaw, Gwet Gyi, Hlan Tin, Hpa Lan Kaing, Hpa Lan Oh, Hpaung Kyaung, Hpet Taw Yae, Hpone Kan, Hpyauk Seik Kone, Hta Lin, Htan Ta Pin, Htein Kaing (Kone), Inn Tein, Ka Zun Ma Ywar Ma, Kaing Ma Gyi, Kaing Taw Ma, Kamma, Kan Chauk, Kan Gyi, Kan Myint Kone, Kan Ni, Kan Taw, Kan Thit, Khin Shey (Taung Su), Khun Hnit Pin, Kin Mun Khar, Koke Ko Su, Kone Char, Ku Toke, Kwin Gyi, Kya Htoe, Kyauk Hlay Khar, Kyauk Htat, Kyauk Se, Kyauk Taing Khin, Kyaukhtu, Kyaung Kone, Kyaw Ma Kyar, Kyet Shar, Kyun Chaung, Lel Ma, Lel Oh, Let Pa Kan, Lin Zin, Magway, Mauk Ka Lan (North), Me Za Li, Mi Ae, Mindon, Mon Hnyin, Myaing, Myit Chay, Na- Hpon Kone, Nga Hpaung Kan, Ngape, Nyaung Gyi Pin, Nyaung Kaing, Nyaung Pin, Ohn Hmin, Ohn Taw (Taung Su), Oke Hpo, Oke Shit Kone, Pakokku, Pan Nyo, Pan Taing Chon, Pauk, Pauk Taw, Paung Laung, Pay Kone, Salin, Saw, Se, Seikphyu, Shar Hla, Shauk Taung, Shin Ma Kan, Shwe Bo, Shwe Bon Thar, Shwe Chaung, Sin Chaung, Sin Ma Ye, Swea Lwe, Swei Tei, Ta Khun Taing, Tat Kone, Taung U, Taw Ma, Tet Wun (North), Tha Pyay San, Tha Yet Kan, Tha Yet Kwa, Thar Lin, Thee Chauk, Thee Pin Kone, Thin Taw, Thit Mei Zi, Thit Nyi Naung, Tilin, Tin Gat, Twin Ma, Wet Kaw, Wet Poke, Wun Gyi, Yae Myet Ni, Yenangyaung, Yesagyo, Zar Haw, Zee Lone, Zee Taw.

In Mandalay, 256 incidents killing 328 people were reported. The following locations were among the affected: Auk Taung Kaing, Aung Chan Thar, Aung Tha Pyay, Aungmyaythazan, Bar Gar, Boke Kone, Bon Thar Kone, Chanayethazan, Chanmyathazi, Chaung Gyi, Chaung Shey, Chaung Taw Wa, Dar Yei Kaung, Gint Ge, Gwayt Gyi, Gwayt Pin, Hin Thar Kone, Hin Thar Ywar

Thit, Ho Weik, Hpa Yar Htu, Hpaung Kyin (North), Hpaung Kyin (South), Hpet Yin, Hpyu Yaung, Htan Chauk Pin, Htan Taw, Htee Kone, Htone Gyi, In Gyi Myaing, Ka Taw, Ka Thea (Middle), Kaing, Kaing Myauk, Kan Sint (North), Khan Sat Kone (East), Khet Lan, Koe Pin, Koke Ke, Ku Kone, Kyar Hnyat, Kyar Taing, Kyat Pyin Ywar Ma, Kyauk Kone, Kyauk Ta Dar, Kyauk Ta Lone, Kyauk Tan, Kyi, Kywe Kya, Lay Ywar Son, Lel Gyi, Let Pan Kone, Let Wea, Ma Gyi Kan, Ma Gyi Tha Hmyar, Ma Yoe Kone, Madaya, Mahaaungmyay, Mandalay, Moe Gyoe, Mogoke, Mway Ku Toet Seik, Mway Ta Laing, Mway Te Oke, Mya Kan Thar, Mya Thi Dar, Myay Nu, Myingyan, Myo Thar, Na Be Thar, Nat Htar, Natogyi, Ngan Myar, Ngazun, Nwe Yon, Nyaung Kone (Lower), Nyaung Kone (North), Nyaung Lay Pin, Nyaung Pin, Nyaung To, Oke Hpo Lay Ywar Thit, Pan Ya, Pauk Kone, Pe Khin Gyi, Pein Pyit (Upper), Pein Pyit (Ywa Ma), Pin Lel Gyi, Po Wa (North), Pu Tee Hpyu, Pyar, Pyay Thar Aye, Pyigyitagon, Pyin Si, Pyinoolwin, Shan Myaung, Shar Say Chet, Shin Hla (Middle), Shin Hla (South), Shwe Pyi, Sin Chaung (North), Sin Chaung (South), Sin Kyun, Sin Thay, Singu, Son, Su Hpyu Kone, Ta Dar (East), Ta Laing Ngoke, Ta Mar Kone, Ta Yaw Pin, Tada-U, Taw Pu, Taw Pyar, Tha Yet Kan, Thabeikkyin, Thein Taing, Thit Yon, Tu Ywin Boet, U Dein, War Lone Pyun, Wet Lu (Middle), Wet Wun Zay Kone, Ya Thar, Yan Ta Po, Yit Kan, Ywar Gyi, Ywar Shey, Ywar Thit, Za Lat Kone, Zee Hpyu Kone, Zee Kone.

In **Mon**, 152 incidents killing 96 people were reported. The following locations were among the affected: Ah Khaik (Sit Kwin), Ah Nin, Ah Wun Gyi, Bilin, Chaungzon, Dauk Yat, Dhamma Tha, Don Wun, Hnit Kayin, Hpo War Thein, Htin Shu, Htone Bo Ka Lay, In Ga Po, Ka Li Kyun, Ka Mar Saing, Ka Yoke Pi, Kar Seik, Kawt Dun, Kawt Dut, Kawt Hlaing Ywar Gyi, Kawt Htin, Kawt Ka Mei, Kawt Pa Naw, Kawt Pa Yan, Kawt That, Kha Ywea, Koe Maing, Ku Lar Koke (Ah Htet Seik), Ku Toet Seik, Kyaikmaraw, Kyaikto, Kyon Nye, Kyun Kone, Lamaing, Ma Yan Kone (Taung Paing), Mawlamyine, Mawt Ka Nin, Me Pa Li, Mei Ta Yo, Mi Chaung Aing, Moke Kha Mawt, Moke Kha Mu, Moke Pa Lin, Mudon, Nat Gyi, Naung Bo, Pauk Kwe, Paung, Pein Hne Kone, Pyin Thar, Shwe Yaung Pya, Sin Twin, Ta Ra Nar, Taung Ka Lay, Taung Sun, Taung Thu

Htay Kone, Than Ka Laung, Thaton, Thein Za Yat, Thone Ein Su, Thone Gwa, Thuwunnawady, Win Pa Ywar Gyi, Yae Wai Ywar Gyi, Yaung Daung, Ye, Zee Pyaung (1), Zee Wun, Zoke Thoke Ywar Gyi.

In **Naypyitaw**, 11 incidents killing 31 people were reported. The following locations were among the affected: Aye Lar, Bwet Gyi Yoe, Det Khi Na Thi Ri, Nay Pyi Taw, Shan, Tatkon, Za Bu Thi Ri.

In **Rakhine**, 549 incidents killing 1189 people were reported. The following locations were among the affected: Ah Bu Gyar, Ah Lel, Ah Lel Kyun, Ah Myint Kyun, Ann, Auk Nat Maw, Auk Ywar (Ywar Haung), Aung Daing, Aung Min Ga Lar (NaTaLa), Aung Thar Yar (NaTaLa), Aung Zay Ya (Nyein Chan Yay), Ba Da Nar, Baw Di Kone, Buthidaung, Chaik Taung, Chaung Hpyar, Chaung Nwe, Chi Laing Hpin, Chin Twin, Dar Gyi Zar, Dar Let Ah Lel Kyun, Dar Wa, Daw Mya, Don, Done Chaung, Dway Cha, Gant Gar (West), Gant Gaw Kyun, Gaung Nyar, Gwayt Chaung, Gyi Pyin, Gyi Wa, Gyoe Gyar Kwin, Har Bi (Middle), Har Bi (West), Haw Ri Tu Lar, Hla Poe Khaung, Hmo Hin Pyin, Hmyaw Chaung, Hnan Me Taung, Htu Sayt Kay, In Gyi, In Gyi Myaing (NaTaLa), Inn Din, Ka Nyin Chaung, Ka Nyin Tan, Kaing Gyi (Rakhine), Kan Pyin Thar Si, Kan Pyin Ywar Haung, Kan Pyin Ywar Thit, Kan Seik (South), Kan Thar Yar, Kanhtaunkyi, Kha Maung Seik, Kha Maung Tone, Kha Yay Myaing, Khaung Laung Ywar Haung, Kin Chaung, Kin Maw, Kin Taung, Ku Lar Bar, Kun Chein, Kun Taing Ywar Gyi, Kun Taung, Kya Maung, Kyat Yae San, Kyauk Pan Du, Kyauk Seik, Kyauk Ta Gar, Kyauk Tan, Kyauk Tan Gyi, Kyaukpyu, Kyauktaw, Kyaung Hpyu Kwin, Kyaung Kone, Kyay Taw, Kyee Kan Pyin (Middle), Kyein Chaung, Kyein Khway Maw, Kyet Taw Pyin, Kywe Htoe, La Baw Wa, Lan Ma Taw, Lat Pan Pyar, Laung Chaung, Lay Pon Kyauk, Lin Mu Taung, Lin Thi, Ma La Kyun, Ma Naw Thi Ri, Ma Nyin Taung, Maung, Maungdaw, Maw Htoke Gyi, Maw Ra Waddy (NaTaLa), Me Let Maung, Mee Chaung Htoe, Mee Kyaung Tet, Min Ga Lar Gyi, Min Tet, Minbya, Moke, Mrauk-U, Myin Hlut, Myit Nar, Myo Thu Gyi, Na Khaung To, Na Yan, Nat Pyin, Nat Seik, Nat Taung Maw, Nga Khu Ya, Nga Let Kya, Nga Pyei, Nga/ Tan



Pyin, Nga/Wai (Ein Shey Min), Ngapali, Ngwe Taung, Nyaung Chaung, Nyaung Chay Htauk, Ohn Maw, Ohn Taw, Oke Taung Pyin, Pa Din, Pan Chin Pauk, Pan Taw Pyin Ywar Thit, Par Da Leik, Pauktaw, Paung Zar, Pein Yae San, Ponnagyun, Pyaing Sayt Kay, Pyar Lay Chaung, Pyin Hpyu, Pyin Yaung, Ramree, Rathedaung, Sa Hnyin, Sa Ne, Say Poke Kay, Shauk Chaung, Shwe Baho, Shwe Hlay, Shwe Kyaung Pyin, Shwe Taung Thar, Shwe Yin Aye, Shwe Zar (West), Si Pin, Sin Gaung, Sin Tet Maw, Sin U Taik, Sittwe, Su Poke Kone, Swayt Chaung, Ta Man Thar Ah Nauk (Rakhine), Ta Pyawt, Taung Chaung, Taung Hpu, Taung Nyo, Taung U, Taung U Maw, Te Mauk, Tha Ray Kon Baung, Tha Win Chaung, Tha Yet Oke, Thandwe, Thar Yar Kone, Thea Kan Htaung, Thea Khon, Thea Kone, Thein Taung, Thin Chi Kaing, Thit Poke Taung, Thit Pon, Thone Saung, Toke Chaung, Toungup, War Bo, War Nwe Pyin, Way Thar Li, Wea Gyi, Wea Gyi Daunt, Wet Kyein, Ya Haing Kwin, Yae Sin, Yoe Ta Yoke, Ywar Ma Rakhine, Ywar Thar Yar, Ywar Thit Kay, Ywet Nyo Taung, Zay Di Pyin, Zee Kyun, Zu Kaing.

In Sagaing, 409 incidents killing 611 people were reported. The following locations were among the affected: Ahr Lar Kat Pa, Aung Thu Kha, Ayadaw, Bagan Taung, Banmauk, Baw Kone, Budalin, Chaung-U, Chi Par (North), Et Taw, Han Thar, Har Par, Hnaw Kone, Hnaw Yin, Hne Twin, Homalin, Hpan Khar Kone, Hpar Naing, Hpaung Ka Tar (South), Hpein Kar, Hta Naung Taw (North), Hta Naung Taw (South), Htan Ta Pin, Htan Taw, Htan Taw Seik, Htee Taw Tin, Hto Mar, In Ma Htee, In Tan, Indaw, Inn, Inn Gyin Maw, Inn Tein, Inn Waing, Kale, Kalewa, Kan, Kan Hpyu Ywar Ma, Kan Kone, Kan Ni, Kan Yin, Kanbalu, Kani, Kat Pa Leik, Katha, Kha Maing (East), Khampat, Khaw Than Ti, Khin-U, Kin Mun Taw, Ku Taw, Ku Toet Kone, Kyan Thar, Kyar Tet, Kyauk Hpu, Kyauk Se, Kyauk Sit Pon (North), Kyaung Taik, Kyay Mon, Kyi Kone, Kyun Kone, Kyun Lel, Kyun Pin Thar, Kyunhla, Kywei Pon, Lahe, Lay Shi, Lel Zin, Let Htoke Taw, Let Pa Taung, Let Yet Ma, Lin Pin Wa, Lin Pone, Ma Gyi Su, Ma Le Thar, Ma Lel, Ma Naw Thar, Ma Taw, Man Maw, Maw Si, Mi Chaung Pin, Min Kone, Min Tan, Min Thar, Mingin, Moe Hnyin Than Boke Day, Moe Kyoe Pyit, Moe Lin, Moke Ka Li, Mon Yway, Monywa, Myaing Thar Yar, Myauk Chaw Taw,

Myaung, Myay Ni, Myinmu, Myothit, Nan Chaung, Nant Thar, Nar Khar, Nat Chaung, Nat Yae Kan, Naung Po Aung, Nyaung Lay Pin, Nyaung Pin, Nyaung Pin Kan, Nyaung Pin Te, Nyaung Taw, Nyaung Thu Myar, Oe Thei Kone, Ohn Taw, Oke Hpo, Pa Du, Pa Laung, Pa Yit, Pale, Paungbyin, Pay Kone (South), Pi Tauk Pin, Pinlebu, Pu Yit Kone (North), Pu Yit Kone (South), Pyi Taw Thar, Pyin Kaing, Pyin Khon Gyi, Pyin Khon Lay, Pyin Taw U, Sagaing, Salingyi, Saw Bwar Yae Shin, Se Gyi, Se Gyi Taw, Se Taw U, Set Taw, Shan Inn, Shar Hpo, Shar Taw, Shwe Kyin, Shwe Pyi Aye, Shwebo, Si Par, Tabayin, Tamu, Tan Su, Taung Mar Taw Ywar Ma, Taung Pon, Taw Ma, Taw Pu (North), Taze, Tei Taw, Tha Yet Pin Su, Thar Si, Thar Yar Kone, Thauung Thut, Thea Kone, Thet Kei Kyin, Thin Taw, Thit Seint Gyi, Tigyaing, Tin Thar, Toke Ta Loke, Ton Mar He, Tone Paw, Wan Pyayt, War Taw Ma, Wetlet, Win Ma Nar, Yae Yin Thar, Yar Za Gyo, Yauk Cho Kwin, Yaung Hee, Ye-U, Yin Dway, Yinmarbin, Ywar Koe Gyi, Ywar Ton (North), Zaung Ka Law, Zee Hpyu Kone, Zee Taw.

In Shan, 331 incidents killing 247 people were reported. The following locations were among the affected: Ahr Than, Ban Mat, Bant Bway, Bi Kin, Doe Pin, Gant Gaw, Hke Mun, Hko Yawng, Ho Hko, Ho Kyant, Ho Tar, Hopong, Hpet Nan, Hsam Ma Hse, Hsawng Pyaung (East), Hseng Hkun, Hsihseng, Hsin Tawng, Hsipaw, Hsut Lan, Htam Yang (Middle), Hti Bwar, Kawng Haw, Kawng Huang, Khway Haung Done, Kin Chaung, Kone Son, Kone Thar, Kun Keng, Kutkai, Kyauk Kyan, Kyauk Taw, Kyaukme, Lashio, Lawksawk, Lawt Hkum, Lel Gyi, Loi Htwea, Loi Kan, Loi Keng, Loi Wein, Loi Woe Toke, Loi Yin (Upper), Long Kan, Long Wei, Mabein, Mae Han, Man Hsan Yae Kya, Man Li, Man Mai, Man Pwe Long, Man Sat, Manton, Mauk Hsa Li, Maw Han, Min Chaung (East), Moe Bye, Moe Bye Yae Kar Tar, Moe Lone, Mone Yu (105 Maing), Mong Yu, Mongmit, Muse, Myin Kya Doe, Myit Son, Myo Thit, Nam Har, Nam Hpar Mu, Nam Hpat Kar (Ho Pong + Pang Sa Lorp), Nam Hu, Nam Lin, Nam Loke, Nam Neint (East), Nam Say Mye, Namhkan, Namhsan, Namtu, Nan Toke, Nang Pang (South), Nar Aik Hkant, Nar Hkaik, Nar San, Nawng Htaw Ywar Thit, Nawng Kyaw, Nawng Mun, Nawng Pat, Nawng Ping Zay Kone, Nawng Pyit, Nawng Sa Kar, Nawng Thein, Nawng Woe, Nawng Yang, Nawng Yway,

Nawngkhio, Ngar Pin, Nyaung Lay Pin, Nyaung Ni, Nyaungshwe, Ohn Ma Thee, Ong Ma Hkar, Pang Hat, Pang Hsauk, Pang Lawt, Pang Nay, Pang Shaw, Pang Sit, Pang Son, Pang Tin, Par Hat, Pekon, Pin Hpyit, Pin Pong, Ping Kan, Pinlaung, Pinlon, Pong Law, Pwe Za Meik, Sa Khan Thar, Sam Hpeik, Say Long, Shwe Zar Li, Sun Long, Tan Tee, Taung Hteik, Taung Nauk, Taung Ni, Taung Poet Kwe, Taung Thu Kone, Taunggyi, Tawt Hsan Ywar Ma, Tha Hpan Kaing, Tha Yet Kone, Tha Yet Taw, Thein Kone, Thone Se Zay Kone, Ton Law, Tway Pu, Wan Hai, Wan Kyauk Long, Wein Kawng, Yae Mawng Tan, Yae Pong, Yae Pu, Yae Win, Ywangan, Zar Li, Zee Hpyu Pin.

In Tanintharyi, 147 incidents killing 229 people were reported. The following locations were among the affected: Ah Lel Sa Khan, Auk Tha Yet Chaung, Aung Thar Wa Ra, Ban Da Ne (Kan Gyi/Kan Nge), Ban Kyoike, Ban La Mut, Ban Lin Myauk, Ban Pyayt, Baw Di Kan, Bokpyin, Dawei, Ein Shey Pyin, Gon Hnyin Seik, Hpaung Taw, Hta Min Ma Sar, Inn Shey Kone, Ka Baung Taung, Ka Net Thi Ri, Ka Twe, Kan Ma Laing, Kan To, Kawthoung, Kyauk Lone Gyi, Kyauk Me Taung, Kyauk Ni Maw, Kyauk Se, Kywe Htein Kwin, Kywe Min Kone, La Thar, Lan Pun Ngan, Launglon, Lel Taung Yar, Mar Ran Nawt, Maung Mei Shaung, Maw Tone (East), Maw Tone (West), Mu Du (East), Myauk Chaw, Myeik, Nyaung Pin Kwin, Ohn Pin Kwin, Pa Kar Ri, Pala, Palauk, Palaw, Pe Det, Pyigyimandaing, Rar Hpu (Thit), Seik Chaung, Seik Hpu, Set Pyin Gyi, Shaw Taw Maw, Sit Bu, Sit Pyea, Ta Po, Tanintharyi, Taung Pu, Tha Byay Chaung, Than Taik, Thar Yar Kone, Thayetchaung, Thein Daw Ywar Ma, Ti Tut Pyin, Tone Byaw Gyi, Ya Mon, Yae Nge (Ya Nge), Za Yat Seik, Zar Di, Zin Bar.

In Yangon, 54 incidents killing 8 people were reported. The following locations were among the affected: Botahtaung, Dagon Myothit (North), Dagon Myothit (Seikkan), Dagon Myothit (South), Dala, Dawbon, Hlaing, Hlaingtharya, Htaukkyant, Insein, Ka Thit Kone, Kamaryut, Kawhmu, Kayan, Kungyangon, Mayangone, Mingaladon, Mingalartaungnyunt, North Okkalapa, Nyaung Thone Pin, Seikgyikanaungto, Shwepyithar, South Okkalapa, Taikkyi, Tat Gyi Kone Taung Paing, Thaketa, Thanlyin, Twantay, Yangon.

## Sources

- ACLED – Armed Conflict Location & Event Data Project: ACLED Methodology and Coding Decisions around Political Violence in Myanmar, June 2022  
<https://www.acleddata.com/download/35255/>
- ACLED – Armed Conflict Location & Event Data Project: Armed Conflict Location and Event Data Project Codebook, 2023  
[https://acleddata.com/acledatanew/wp-content/uploads/dlm\\_uploads/2023/06/ACLED\\_Codebook\\_2023.pdf](https://acleddata.com/acledatanew/wp-content/uploads/dlm_uploads/2023/06/ACLED_Codebook_2023.pdf)
- ACLED – Armed Conflict Location & Event Data Project: Asia-Pacific, 26 July 2024  
[https://acleddata.com/curated-data-files/#Asia-Pacific\\_2018-2024\\_Jul26](https://acleddata.com/curated-data-files/#Asia-Pacific_2018-2024_Jul26)  
(visited on 7 August 2024)
- CIA – U. S. Central Intelligence Agency: China and India, 2006  
<http://hdl.loc.gov/loc.gmd/g7820.ct002746>
- CIA – U. S. Central Intelligence Agency: Bhutan Administrative, 2012  
[https://www.cia.gov/library/publications/resources/cia-maps-publications/map-downloads/Bhutan\\_Admin.pdf](https://www.cia.gov/library/publications/resources/cia-maps-publications/map-downloads/Bhutan_Admin.pdf)
- GADM – Global Administrative Areas: gadm36\_levels.shp, Version 3.6, 6 May 2018a  
[http://biogeo.ucdavis.edu/data/gadm3.6/gadm36\\_levels.shp.zip](http://biogeo.ucdavis.edu/data/gadm3.6/gadm36_levels.shp.zip)
- GADM – Global Administrative Areas: gadm36\_MMR.shp.zip, Version 3.6, 6 May 2018b  
[http://biogeo.ucdavis.edu/data/gadm3.6/shp/gadm36\\_MMR.shp.zip](http://biogeo.ucdavis.edu/data/gadm3.6/shp/gadm36_MMR.shp.zip)



- Natural Earth: Admin 0 – Breakaway, Disputed Areas, Version 3.1.0, undated  
[http://www.naturalearthdata.com/http://www.naturalearthdata.com/download/10m/cultural/ne\\_10m\\_admin\\_0\\_disputed\\_areas.zip](http://www.naturalearthdata.com/http://www.naturalearthdata.com/download/10m/cultural/ne_10m_admin_0_disputed_areas.zip)
- Smith, Walter H. F. and Wessel, Paul: Global Self-consistent Hierarchical High-resolution Geography (GSHHG), Version 2.3.4, 1 May 2015  
<https://www.ngdc.noaa.gov/mgg/shorelines/data/gshhg/latest/>

## Disclaimer

ACLED data undergoes several rounds of review before publication and is continually updated as new events are added and existing events are revised as new information becomes available. Updates in ACLED's datasets will not necessarily be reflected in ACCORD's reports if the update occurs close to or after the latter's publication. Changes in the sources used by ACLED to collect incident data might affect the comparability of data over time. For more information on ACCORD's products based on the data, please see the [ecoi.net blog posts tagged with "ACLED"](#). The lack of information on an event in this report does not permit the inference that it did not take place. The boundaries and names displayed do not imply endorsement or acceptance by the Austrian Red Cross.

## Cite as

- ACCORD – Austrian Centre for Country of Origin & Asylum Research and Documentation: Myanmar, second quarter 2024: Update on incidents according to the Armed Conflict Location & Event Data Project (ACLED), 7 August 2024