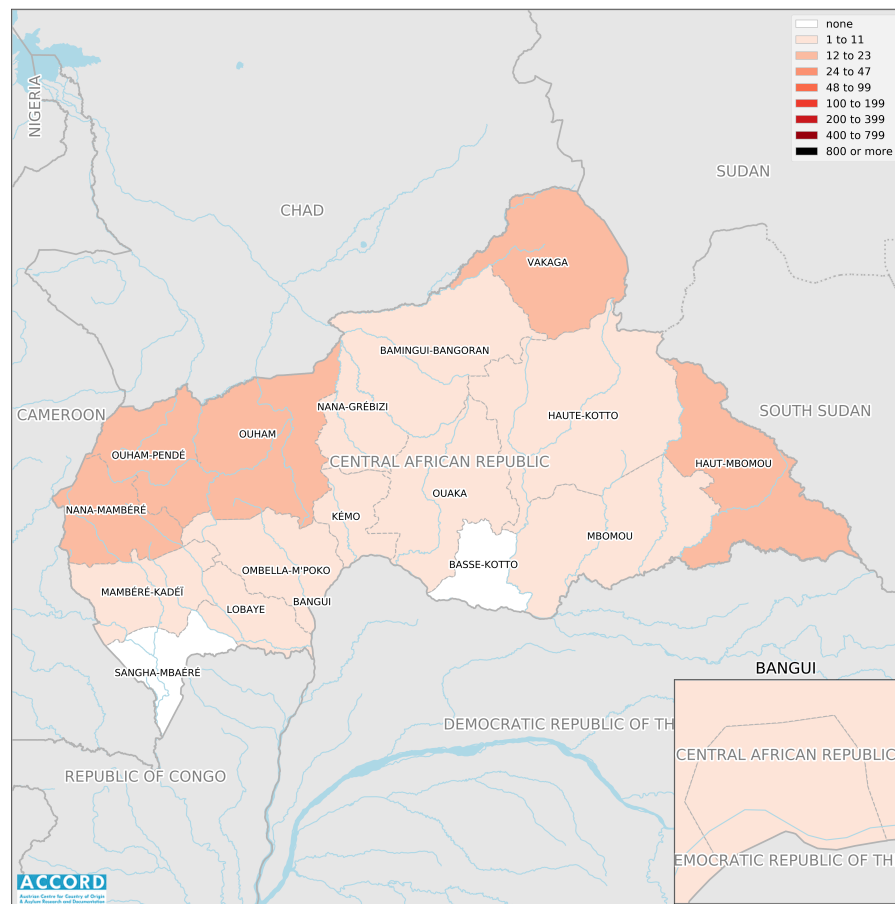


# CENTRAL AFRICAN REPUBLIC, YEAR 2023:

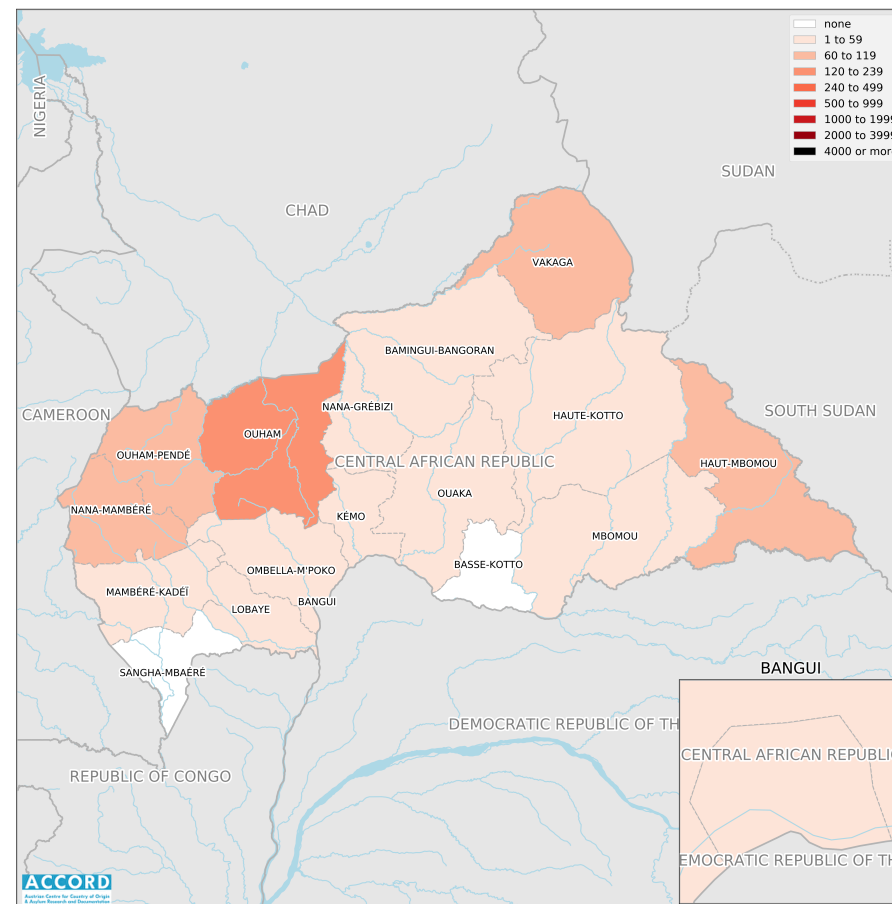
Update on incidents according to the Armed Conflict Location & Event Data Project (ACLED)

compiled by ACCORD, 8 April 2024

## Number of reported incidents with at least one fatality



## Number of reported fatalities



National borders: [GADM, 6 May 2018b](#); administrative divisions: [GADM, 6 May 2018a](#); Abyei Area: [SSNBS, 1 December 2008](#); South Sudan/Sudan border status: [UN Cartographic Section, October 2011](#); incident data: [ACLED, 29 March 2024](#); coastlines and inland waters: [Smith and Wessel, 1 May 2015](#)

## Contents

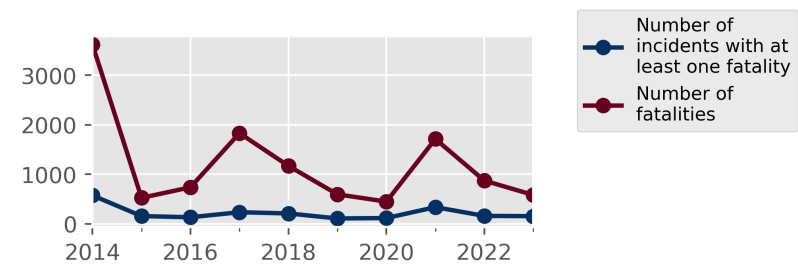
Number of reported fatalities	1
Number of reported incidents with at least one fatality	1
Conflict incidents by category	2
Development of conflict incidents from 2014 to 2023	2
Methodology	3
Conflict incidents per province	4
Localization of conflict incidents	4
Disclaimer	6

## Conflict incidents by category

Category	Number of incidents	Number of incidents with at least one fatality	Number of fatalities
Violence against civilians	143	62	127
Battles	137	82	433
Strategic developments	113	0	0
Protests	20	0	0
Explosions / Remote violence	19	9	21
Riots	11	2	2
<b>Total</b>	<b>443</b>	<b>155</b>	<b>583</b>

This table is based on data from ACLED (datasets used: [ACLED, 29 March 2024](#)).

## Development of conflict incidents from 2014 to 2023



This graph is based on data from ACLED (datasets used: [ACLED, 29 March 2024](#)).

## Methodology

The data used in this report was collected by the Armed Conflict Location & Event Data Project (ACLED). ACLED collects data on reported conflict events in selected African and Asian countries, Central African Republic being among them. ACLED researchers collect event data from a variety of sources and code them by date, location, agent, and event type.

Most of the data collected by ACLED is gathered based on publicly available, secondary reports. It may therefore underestimate the volume of events. Fatality data particularly is vulnerable to bias and inaccurate reporting, and ACLED states to use the most conservative estimate available. ACLED uses the reports' context to estimate fatalities for events with reported fatalities for which the exact number is unknown ("3" or "10" for plural fatalities, depending on the context; "100" if "hundreds" are mentioned, etc.). For further details on ACLED and for the full data, see [www.acleddata.com](http://www.acleddata.com) and [Raleigh; Linke; Hegre, and Karlsen, 2010](#).

Based on this data, the Austrian Centre for Country of Origin & Asylum Research and Documentation (ACCORD) compiles updates on conflict incidents and publishes them on [ecoi.net](http://ecoi.net) to offer another access point to the ACLED datasets.

It is advised to employ extreme caution when using fatality numbers.

Assessments of the security situation should not be based solely on quantitative analysis of event data.

Geographic map data is primarily based on GADM, complemented with other sources if necessary. Incidents are mapped to GADM provinces using the provinces in ACLED data. Province names and borders may differ between ACLED and GADM. Incidents that could not be located are ignored. The numbers included in this overview might therefore differ from the original ACLED data. ACLED uses varying degrees of geographic precision for the individual incidents, depending

on what level of detail is reported. Thus, towns may represent the wider region in which an incident occurred, or the provincial capital may be used if only the province is known. Erroneous location data, especially due to identical place names, cannot be fully excluded.

Incidents comprise the following categories: battles, violence against civilians, remote violence, riots/protests, non-violent strategic activities. For details on these categories, please see

- ACLED – Armed Conflict Location & Event Data Project: Armed Conflict Location and Event Data Project Codebook, 2023a  
[https://acleddata.com/acleddatanew/wp-content/uploads/dlm\\_uploads/2023/06/ACLED\\_Codebook\\_2023.pdf](https://acleddata.com/acleddatanew/wp-content/uploads/dlm_uploads/2023/06/ACLED_Codebook_2023.pdf)
- ACLED – Armed Conflict Location & Event Data Project: FAQs: ACLED Fatality Methodology, January 2023b  
[https://acleddata.com/acleddatanew/wp-content/uploads/2023/01/FAQs-ACLED-Fatality-Methodology\\_2023.pdf](https://acleddata.com/acleddatanew/wp-content/uploads/2023/01/FAQs-ACLED-Fatality-Methodology_2023.pdf)
- ACLED – Armed Conflict Location & Event Data Project: Quick Guide to ACLED Data, March 2023c  
<https://acleddata.com/resources/quick-guide-to-acled-data/>

## Conflict incidents per province

Province	Number of incidents	Number of incidents with fatalities	Number of fatalities
Bamingui-Bangoran	31	9	39
Bangui	51	6	9
Basse-Kotto	1	0	0
Haut-Mbomou	63	22	99
Haute-Kotto	13	6	24
Kémo	3	2	2
Lobaye	7	4	17
Mambéré-Kadéï	8	3	8
Mbomou	10	3	8
Nana-Grébizi	5	1	4
Nana-Mambéré	56	23	68
Ombella-M'Poko	11	4	4
Ouaka	21	8	32
Ouham	45	23	124
Ouham-Pendé	58	23	76
Vakaga	60	18	69

## Localization of conflict incidents

**Note:** The following list is an overview of the incident data included in the ACLED dataset. More details are available in the actual dataset (date, location data, event type, involved actors, information sources, etc.). The data's precision varies among the incidents: a town may represent a region, or the provincial capital may be used

if the precise location of an incident is unknown. In the following list, the names of event locations are taken from ACLED, while the administrative region names are taken from GADM data which serves as the basis for the maps above.

In **Bamingui-Bangoran**, 31 incidents killing 39 people were reported. The following locations were among the affected: **Akourousoulba, Djamassinda, Krakoma, Mbengou, Miamere, Ndele, Ngarba-Bord, Tiri**.

In **Bangui**, 51 incidents killing 9 people were reported. The following locations were among the affected: **Bangui, Bangui - 3, Bangui - 4, Bangui - 5, Bangui - 6, Bangui - 7**.

In **Basse-Kotto**, 1 incident killing 0 people was reported. The following location was among the affected: **Mobaye**.

In **Haut-Mbomou**, 63 incidents killing 99 people were reported. The following locations were among the affected: **Bambouti, Kitessa, Koumboli, Kpabou, Mboki, Obo, Zemio**.

In **Haute-Kotto**, 13 incidents killing 24 people were reported. The following locations were among the affected: **Bria, Ouadda, Sam-Ouandja**.

In **Kémo**, 3 incidents killing 2 people were reported. The following location was among the affected: **Sibut**.

In **Lobaye**, 7 incidents killing 17 people were reported. The following locations were among the affected: **Boda, Mbaiki, Mougoumba, Yawa**.

In **Mambéré-Kadéï**, 8 incidents killing 8 people were reported. The following locations were among the affected: **Bania, Berberati, Carnot, Dilapoko, Gadzi**.

In **Mbomou**, 10 incidents killing 8 people were reported. The following locations were among the affected: **Bakouma, Bangassou, Benima, Dembia, Nzako.**

**boloye, Ouanda-Djalle, Ouandja, Sikikede, Tiringoulou.**

In **Nana-Grébizi**, 5 incidents killing 4 people were reported. The following locations were among the affected: **Kaga-Bandoro, Mbres.**

In **Nana-Mambéré**, 56 incidents killing 68 people were reported. The following locations were among the affected: **Abba, Baboua, Baoro, Bata, Beloko, Beninga, Besson, Bondiba, Bouar, Cantonnier, Gallo, Gazi, Gobolo, Nguia-Bouar, Niem, Yelewa, Yenga.**

In **Ombella-M'Poko**, 11 incidents killing 4 people were reported. The following locations were among the affected: **Begoua, Bimbo, Bobele I, Bouboui, Bourouba, Damara, Yaloke.**

In **Ouaka**, 21 incidents killing 32 people were reported. The following locations were among the affected: **Bakala, Bambari, Banguela, Bokolobo, Digui, Goya, Grimari, Ippy, Kouango, Ndassima, Ngakobo.**

In **Ouham**, 45 incidents killing 124 people were reported. The following locations were among the affected: **Batangafo, Benzambe, Bodjomo, Boguila, Bossangoa, Kabo, Kadjama, Kouki, Mala, Markounda, Mbo, Moyenne Sido, Nana-Bakassa, Sido, Zere.**

In **Ouham-Pendé**, 58 incidents killing 76 people were reported. The following locations were among the affected: **Bedam, Begouladje 1, Bembere, Benamkor, Betoko, Bezere, Bocaranga, Bohong, Bossemptele, Bozoum, Gouze, Kore, Kouï, Letele, Loura, Ndanga, Ndim, Ngaoundaye, Nzakoundou, Paoua, Toubanko 1, Touloulou.**

In **Vakaga**, 60 incidents killing 69 people were reported. The following locations were among the affected: **Am-Dafock, Birao, Boura, Dele, Gordil, Ndiffa, Ndom-**

## Sources

- ACLED – Armed Conflict Location & Event Data Project: Africa (29 March 2024), 29 March 2024  
[https://acleddata.com/curated-data-files/#Africa\\_1997-2024\\_Mar29](https://acleddata.com/curated-data-files/#Africa_1997-2024_Mar29)
- GADM – Global Administrative Areas: gadm36\_CAF\_shp.zip, Version 3.6, 6 May 2018a  
[http://biogeo.ucdavis.edu/data/gadm3.6/shp/gadm36\\_CAF\\_shp.zip](http://biogeo.ucdavis.edu/data/gadm3.6/shp/gadm36_CAF_shp.zip)
- GADM – Global Administrative Areas: gadm36\_levels.shp, Version 3.6, 6 May 2018b  
[http://biogeo.ucdavis.edu/data/gadm3.6/gadm36\\_levels.shp.zip](http://biogeo.ucdavis.edu/data/gadm3.6/gadm36_levels.shp.zip)
- Raleigh, Clionadh; Linke, Andrew; Hegre, Håvard, and Karlsen, Joakim: "Introducing ACLED-Armed Conflict Location and Event Data", in: Journal of Peace Research (47(5) 2010 ), pp. 651–660  
<http://jpr.sagepub.com/content/47/5/651.full.pdf+html>
- Smith, Walter H. F. and Wessel, Paul: Global Self-consistent Hierarchical High-resolution Geography (GSHHG), Version 2.3.4, 1 May 2015  
<https://www.ngdc.noaa.gov/mgg/shorelines/data/gshhg/latest/>
- SSNBS – South Sudan National Bureau of Statistics: Counties including disputed Abyei region, 1 December 2008  
[https://www.humanitarianresponse.info/sites/www.humanitarianresponse.info/files/datasets/SS\\_admbnda\\_adm2\\_200k\\_ssnbs\\_2013\\_0.zip](https://www.humanitarianresponse.info/sites/www.humanitarianresponse.info/files/datasets/SS_admbnda_adm2_200k_ssnbs_2013_0.zip)
- UN Cartographic Section: South Sudan, October 2011  
[http://www.ecoi.net/file\\_upload/4232\\_1407158014\\_southsudan.pdf](http://www.ecoi.net/file_upload/4232_1407158014_southsudan.pdf)

## Disclaimer

Event data may be revised or complemented in future updates. Updates in ACLED's datasets will not necessarily be reflected in ACCORD's reports if the update occurs close to or after the latter's publication. Changes in the sources used by ACLED to collect incident data might affect the comparability of data over time. For more information on ACLED's methodology, please see [www.acleddata.com/resources/](http://www.acleddata.com/resources/). For more information on ACCORD's products based on the data, please see the [ecoi.net](http://www.ecoi.net) blog posts tagged with "ACLED". The lack of information on an event in this report does not permit the inference that it did not take place. The boundaries and names displayed do not imply endorsement or acceptance by the Austrian Red Cross.

## Cite as

- ACCORD – Austrian Centre for Country of Origin & Asylum Research and Documentation: Central African Republic, year 2023: Update on incidents according to the Armed Conflict Location & Event Data Project (ACLED), 8 April 2024