

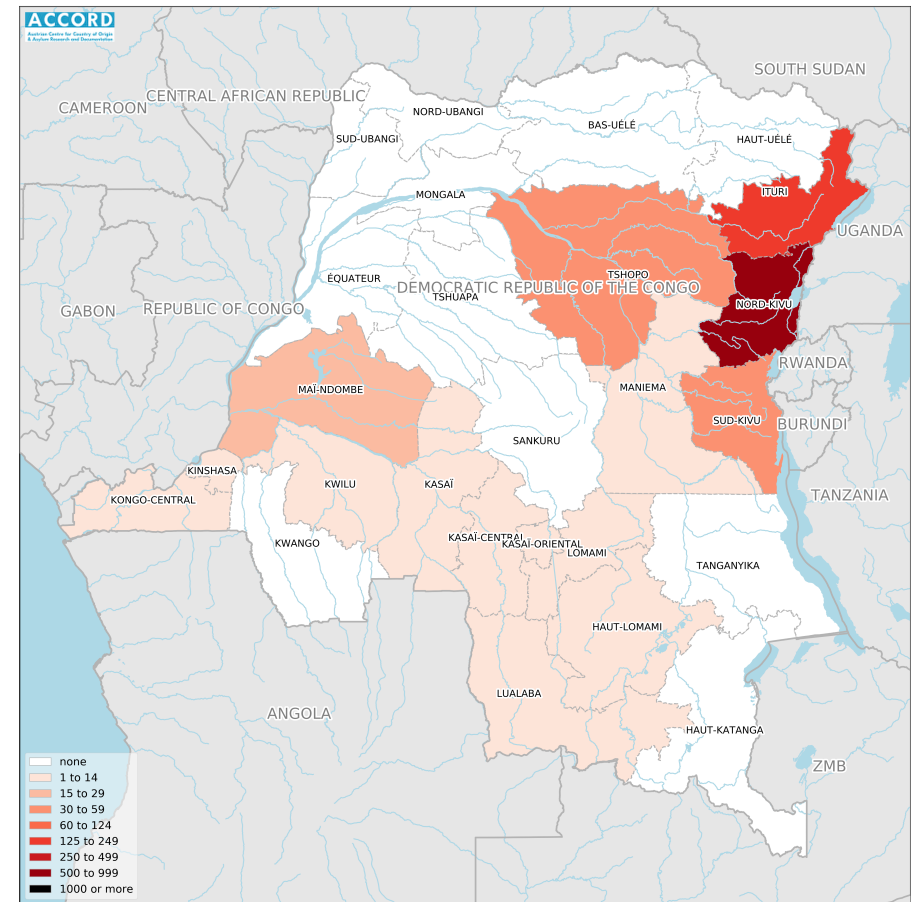
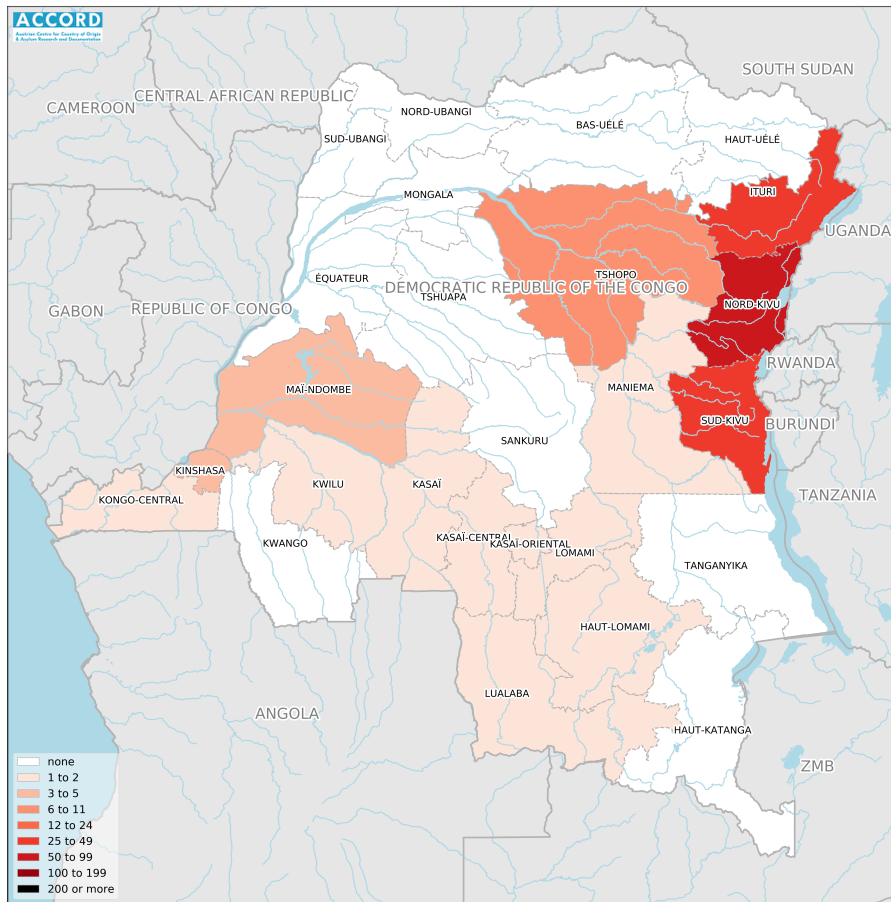
DEMOCRATIC REPUBLIC OF CONGO, FOURTH QUARTER 2023:

Update on incidents according to the Armed Conflict Location & Event Data Project (ACLED)

compiled by ACCORD, 8 April 2024

Number of reported incidents with at least one fatality

Number of reported fatalities



National borders: [GADM, 6 May 2018b](#); administrative divisions: [GADM, 6 May 2018a](#); incident data: [ACLED, 29 March 2024](#); coastlines and inland waters: [Smith and Wessel, 1 May 2015](#)

Contents

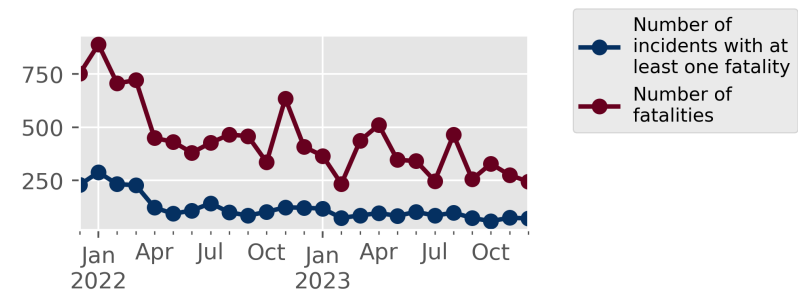
Number of reported fatalities	1
Number of reported incidents with at least one fatality	1
Conflict incidents by category	2
Development of conflict incidents from December 2021 to December 2023	2
Methodology	3
Conflict incidents per province	4
Localization of conflict incidents	4
Disclaimer	6

Conflict incidents by category

Category	Number of incidents	Number of incidents with at least one fatality	Number of fatalities
Battles	262	75	278
Violence against civilians	145	102	502
Riots	72	20	29
Strategic developments	72	0	0
Protests	37	0	0
Explosions / Remote violence	21	6	38
Total	609	203	847

This table is based on data from ACLED (datasets used: [ACLED, 29 March 2024](#)).

Development of conflict incidents from December 2021 to December 2023



This graph is based on data from ACLED (datasets used: [ACLED, 29 March 2024](#)).

Methodology

The data used in this report was collected by the Armed Conflict Location & Event Data Project (ACLED). ACLED collects data on reported conflict events in selected African and Asian countries, Democratic Republic of Congo being among them. ACLED researchers collect event data from a variety of sources and code them by date, location, agent, and event type.

Most of the data collected by ACLED is gathered based on publicly available, secondary reports. It may therefore underestimate the volume of events. Fatality data particularly is vulnerable to bias and inaccurate reporting, and ACLED states to use the most conservative estimate available. ACLED uses the reports' context to estimate fatalities for events with reported fatalities for which the exact number is unknown ("3" or "10" for plural fatalities, depending on the context; "100" if "hundreds" are mentioned, etc.). For further details on ACLED and for the full data, see www.acleddata.com and [Raleigh; Linke; Hegre, and Karlsen, 2010](#).

Based on this data, the Austrian Centre for Country of Origin & Asylum Research and Documentation (ACCORD) compiles updates on conflict incidents and publishes them on ecoi.net to offer another access point to the ACLED datasets.

It is advised to employ extreme caution when using fatality numbers.

Assessments of the security situation should not be based solely on quantitative analysis of event data.

Geographic map data is primarily based on GADM, complemented with other sources if necessary. Incidents are mapped to GADM provinces using the provinces in ACLED data. Province names and borders may differ between ACLED and GADM. Incidents that could not be located are ignored. The numbers included in this overview might therefore differ from the original ACLED data. ACLED uses varying degrees of geographic precision for the individual incidents, depending

on what level of detail is reported. Thus, towns may represent the wider region in which an incident occurred, or the provincial capital may be used if only the province is known. Erroneous location data, especially due to identical place names, cannot be fully excluded.

Incidents comprise the following categories: battles, violence against civilians, remote violence, riots/protests, non-violent strategic activities. For details on these categories, please see

- ACLED – Armed Conflict Location & Event Data Project: Armed Conflict Location and Event Data Project Codebook, 2023a
https://acleddata.com/acleddatanew/wp-content/uploads/dlm_uploads/2023/06/ACLED_Codebook_2023.pdf
- ACLED – Armed Conflict Location & Event Data Project: FAQs: ACLED Fatality Methodology, January 2023b
https://acleddata.com/acleddatanew/wp-content/uploads/2023/01/FAQs-ACLED-Fatality-Methodology_2023.pdf
- ACLED – Armed Conflict Location & Event Data Project: Quick Guide to ACLED Data, March 2023c
<https://acleddata.com/resources/quick-guide-to-acled-data/>

Conflict incidents per province

Province	Number of incidents	Number of incidents with fatalities	Number of fatalities
Haut-Katanga	9	0	0
Haut-Lomami	4	2	5
Haut-Uélé	1	0	0
Ituri	73	47	175
Kasaï	6	1	5
Kasaï-Central	3	1	1
Kasaï-Oriental	9	1	1
Kinshasa	25	3	11
Kongo-Central	4	2	3
Kwango	1	0	0
Kwilu	11	2	3
Lomami	3	1	3
Lualaba	4	2	2
Maniema	11	2	4
Mai-Ndombe	8	5	18
Mongala	1	0	0
Nord-Kivu	353	99	535
Sankuru	1	0	0
Sud-Kivu	60	25	40
Sud-Ubangi	1	0	0

Province	Number of incidents	Number of incidents with fatalities	Number of fatalities
Tanganyika	1	0	0
Tshopo	17	10	41
Équateur	3	0	0

Localization of conflict incidents

Note: The following list is an overview of the incident data included in the ACLED dataset. More details are available in the actual dataset (date, location data, event type, involved actors, information sources, etc.). The data's precision varies among the incidents: a town may represent a region, or the provincial capital may be used if the precise location of an incident is unknown. In the following list, the names of event locations are taken from ACLED, while the administrative region names are taken from GADM data which serves as the basis for the maps above.

In **Haut-Katanga**, 9 incidents killing 0 people were reported. The following locations were among the affected: **Kasumbalesa, Kikula, Lubumbashi**.

In **Haut-Lomami**, 4 incidents killing 5 people were reported. The following locations were among the affected: **Bukama, Malemba Nkulu**.

In **Haut-Uélé**, 1 incident killing 0 people was reported. The following location was among the affected: **Wando**.

In **Ituri**, 73 incidents killing 175 people were reported. The following locations were among the affected: **Ariwara, Bakwanza, Biakato, Bunia, Dhendro, Djatsi, Djugu, Idohu, Irumu, Itendey, Ituri, Kyabohe, Ladile, Lida, Lolwa, Madombo, Mahagi, Malibongo, Mambasa, Mambelenga, Mayuano, Mbau, Mitego, Mudzipela, Mulinga, Sesa, Sondu, Tondoli, Tshabi, Tsukpa**.

In **Kasai**, 6 incidents killing 5 people were reported. The following locations were among the affected: **Dekese, Ilebo, Tshikapa**.

In **Kasai-Central**, 3 incidents killing 1 person were reported. The following location was among the affected: **Kananga**.

In **Kasai-Oriental**, 9 incidents killing 1 person were reported. The following locations were among the affected: **Mbuji-Mayi, Tshilenge**.

In **Kinshasa**, 25 incidents killing 11 people were reported. The following locations were among the affected: **Kinshasa, Kinshasa - Gombe, Kinshasa - Limete, Kinshasa - Masina, Kinshasa - Ngaliema, Mbankana**.

In **Kongo-Central**, 4 incidents killing 3 people were reported. The following locations were among the affected: **Boma, Kenge, Luozi, Moanda**.

In **Kwango**, 1 incident killing 0 people was reported. The following location was among the affected: **Kasongo Lunda**.

In **Kwilu**, 11 incidents killing 3 people were reported. The following locations were among the affected: **Bandundu, Gungu, Kikwit, Masi Manimba, Mukedi**.

In **Lomami**, 3 incidents killing 3 people were reported. The following locations were among the affected: **Lubao, Mwene-Ditu**.

In **Lualaba**, 4 incidents killing 2 people were reported. The following locations were among the affected: **Fungurume, Lualaba**.

In **Maniema**, 11 incidents killing 4 people were reported. The following locations were among the affected: **Kabambare, Kavima, Kindu, Salamabila, Wamaza**.

In **Mai-Ndombe**, 8 incidents killing 18 people were reported. The following locations were among the affected: **Bolobo, Kwamouth**.

In **Mongala**, 1 incident killing 0 people was reported. The following location was among the affected: **Lisala**.

In **Nord-Kivu**, 353 incidents killing 535 people were reported. The following locations were among the affected: **Bambu, Bashu, Basisale, Beni, Bihambwe, Binza, Bishusha, Buhumba, Bukombo, Bunagana, Buramba, Burambo, Burungu, Busumba, Butembo, Buvira, Bweteta, Bwiza, Eringeti, Goma, Goma - Keshero, Goma - Majengo, Goma - Ndosho, Hohe, Kabalekasha, Kahunga, Kainama, Kako, Kanaba, Kanyabayonga, Kanyamahoro, Karenga, Karton, Karuba, Kashebere, Kasindi, Katanda, Katwa, Kausa, Kazinga, Kazuba, Kibarizo, Kibati, Kibaya, Kibirizi, Kibumba, Kigoma, Kihimba, Kilolirwe, Kilya, Kingarame, Kinyandonyi, Kirolirwe, Kirumbu, Kisharu, Kishishi, Kitchanga, Kiwanja, Kizimba, Kokola, Kyangitsi, Kyasenda, Kyondo, Lubero, Mabenga, Mabuo, Makisabo, Makumbo, Malehe, Mambau, Mamove, Mangazi, Mangina, Mapobu, Marangara, Masisi, Matanda, Mayimoya, Mbau, Mokoto, Mount Karisimbi, Mukoko, Munigi, Murambi, Mushaki, Mwenda, Mweso, Ngangi II, Ngwenda, Nkwenda, Nobili, Nyakakoma, Nyamilima, Nyamitaba, Nyiragongo, Oicha, Opira I, Rubare, Rugari, Rugogwe, Rugogwe-Bunjuli, Rujebesha, Rukoko, Rukoro, Rumangabo, Rushege, Rushovu, Rutshuru, Sake, Shasha, Shonyi, Tongo, Virunga National Park, Watalinga**.

In **Sankuru**, 1 incident killing 0 people was reported. The following location was among the affected: **Lusambo**.

In **Sud-Kivu**, 60 incidents killing 40 people were reported. The following locations were among the affected: **Baraka, Bukavu, Bukavu - Panzi, Bulambika, Bwegera, Fizi, Hona, Irumba, Kabare, Kabingo, Kakamba, Kalehe, Kiliba, Kivumu, Lurhala, Lweba, Makobola, Masango, Masha, Matala, Mikenge, Minembwe, Mulongwe, Murambi, Numbi, Nyange, Rugenge, Rutigita Monyi,**

Sange, Shabunda, Shuni, Uvira, Walungu.

In **Sud-Ubangi**, 1 incident killing 0 people was reported. The following location was among the affected: **Gemena**.

In **Tanganyika**, 1 incident killing 0 people was reported. The following location was among the affected: **Manono**.

In **Tshopo**, 17 incidents killing 41 people were reported. The following locations were among the affected: **Bafwasende, Banalia, Isangi, Kisangani, Lisuma, Lubunga, Yakoko, Yalokwa**.

In **Équateur**, 3 incidents killing 0 people were reported. The following locations were among the affected: **Makanza, Mbandaka**.

Sources

- ACLED – Armed Conflict Location & Event Data Project: Africa (29 March 2024), 29 March 2024
https://acleddata.com/curated-data-files/#Africa_1997-2024_Mar29
- GADM – Global Administrative Areas: gadm36_COD_shp.zip, Version 3.6, 6 May 2018a
http://biogeo.ucdavis.edu/data/gadm3.6/shp/gadm36_COD_shp.zip
- GADM – Global Administrative Areas: gadm36_levels.shp, Version 3.6, 6 May 2018b
http://biogeo.ucdavis.edu/data/gadm3.6/gadm36_levels.shp.zip
- Raleigh, Clionadh; Linke, Andrew; Hegre, Håvard, and Karlsen, Joakim: “Introducing ACLED-Armed Conflict Location and Event Data”, in: Journal of Peace Research (47(5) 2010), pp. 651–660
<http://jpr.sagepub.com/content/47/5/651.full.pdf+html>
- Smith, Walter H. F. and Wessel, Paul: Global Self-consistent Hierarchical High-resolution Geography (GSHHG), Version 2.3.4, 1 May 2015
<https://www.ngdc.noaa.gov/mgg/shorelines/data/gshhg/latest/>

Disclaimer

Event data may be revised or complemented in future updates. Updates in ACLED’s datasets will not necessarily be reflected in ACCORD’s reports if the update occurs close to or after the latter’s publication. Changes in the sources used by ACLED to collect incident data might affect the comparability of data over time. For more information on ACLED’s methodology, please see www.acleddata.com/resources/. For more information on ACCORD’s products based on the data, please see the

[ecoi.net blog posts tagged with "ACLED"](#). The lack of information on an event in this report does not permit the inference that it did not take place. The boundaries and names displayed do not imply endorsement or acceptance by the Austrian Red Cross.

Cite as

- ACCORD – Austrian Centre for Country of Origin & Asylum Research and Documentation: Democratic Republic of Congo, fourth quarter 2023: Update on incidents according to the Armed Conflict Location & Event Data Project (ACLED), 8 April 2024