

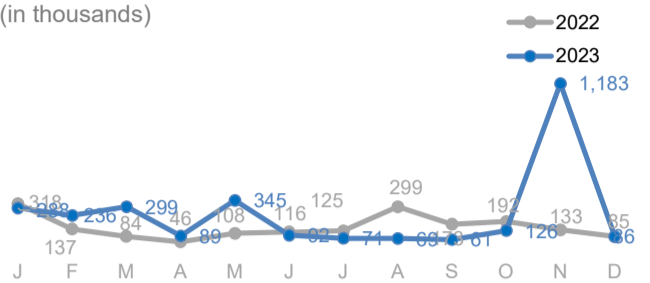
View the interactive dashboard here: <http://prmn-somalia.unhcr.org/>

TOTAL DISPLACEMENTS

86,0002,944,0001,816,000

in December(Jan - Dec 2023)(Jan - Dec 2022)

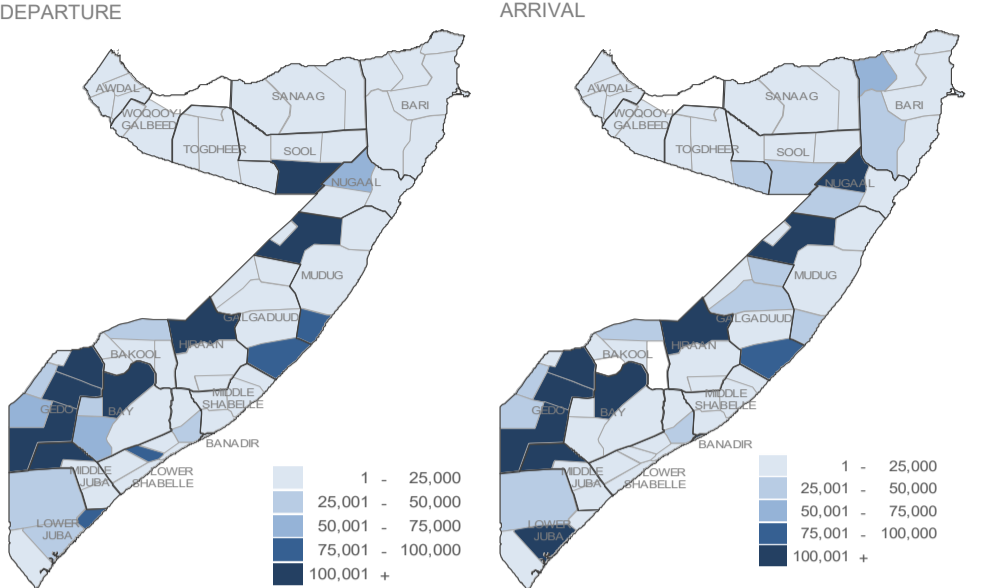
The UNHCR-led PRMN implemented in partnership with NRC reported 86,000 new internal displacements in the month of December 2023. Out of these, 3,000 were caused by conflict or insecurity, 4,000 were due to drought, 77,000 were due to floods and 2,000 were displaced due to other reasons



BY REGION (Jan - Dec 2023)

	DEP	ARR
Hiraan	554,430	555,790
Lower Shabelle	206,180	76,810
Middle Shabelle	74,610	44,240
Gedo	564,620	610,420
Bay	275,620	219,020
Bari	38,380	92,400
Lower Juba	176,180	187,720
Galgaduud	117,820	167,460
Mudug	311,050	250,490
Bakool	73,150	57,310
Sanaag	19,040	17,810
Middle Juba	168,680	176,310
Banadir	23,920	192,540
Awdal	11,660	7,790
Togdheer	33,360	58,700
Sool	215,220	65,640
Nugaal	77,710	162,790
Woq. Galbeed	3,680	2,060

BY DISTRICT (Jan - Dec 2023)

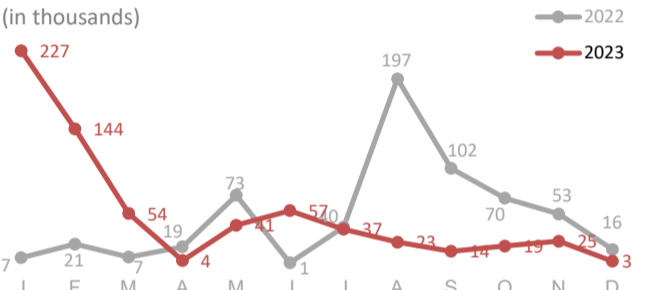


CONFLICT / INSECURITY DISPLACEMENTS

3,000653,000607,000

in December(Jan - Dec 2023)(Jan - Dec 2022)

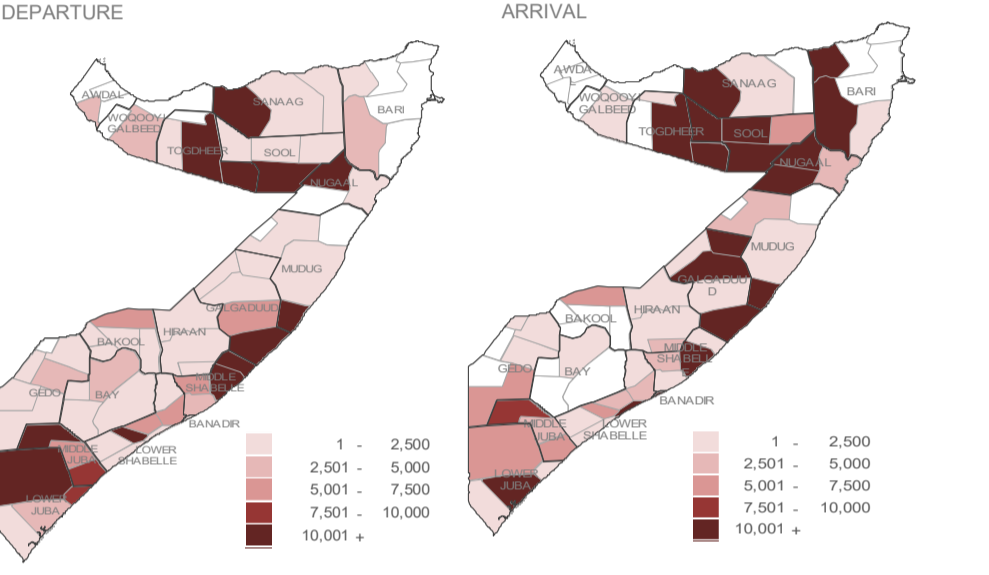
Major displacements in December occurred in Lower Juba (1,233) and Banadir (743) regions.



BY REGION (Jan - Dec 2023)

	DEP	ARR
Lower Shabelle	55,470	27,690
Bay	4,430	1,380
Galgaduud	101,810	151,490
Gedo	4,270	8,660
Bakool	5,840	5,400
Lower Juba	22,210	26,940
Sool	198,030	48,060
Sanaag	13,840	14,840
Middle Juba	26,210	17,340
Togdheer	24,890	52,010
Mudug	82,370	29,900
Banadir	930	60,750
Middle Shabelle	52,180	26,260
Hiraan	2,210	3,430
Bari	3,020	56,030
Nugaal	48,070	122,020
Awdal	3,870	
Woq. Galbeed	3,540	980

BY DISTRICT (Jan - Dec 2023)

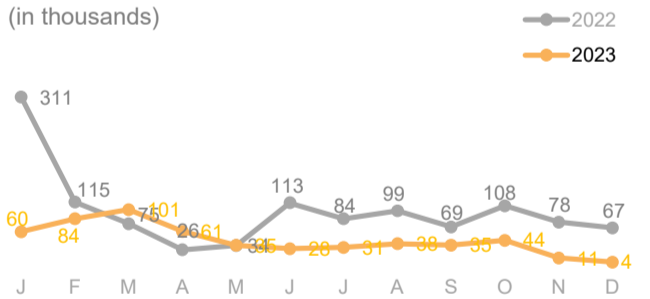


DROUGHT RELATED DISPLACEMENTS

4,000531,0001,179,000

in December(Jan - Dec 2023)(Jan - Dec 2022)

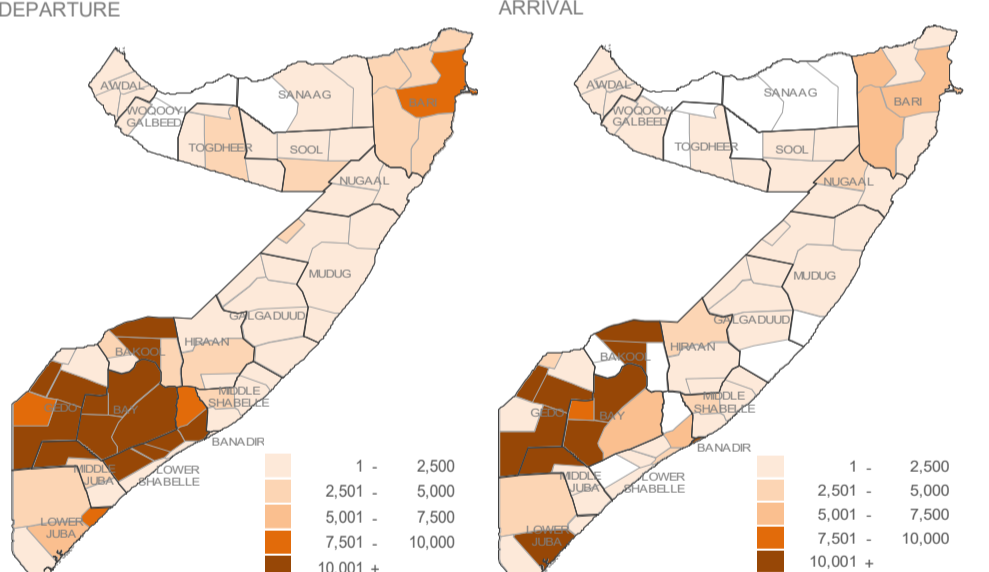
The highest displacements in November owing to drought were recorded in Bari (1,495), Bakool (1.026) regions.



BY REGION (Jan - Dec 2023)

	DEP	ARR
Bay	152,100	101,290
Bari	24,780	28,880
Sanaag	4,440	2,380
Bakool	63,280	49,250
Awdal	6,500	6,500
Sool	4,530	820
Gedo	90,050	127,390
Lower Shabelle	108,740	14,010
Mudug	7,170	6,640
Togdheer	4,520	2,780
Hiraan	6,330	7,100
Nugaal	1,030	5,090
Lower Juba	19,210	23,380
Woq. Galbeed	30	970
Middle Juba	28,820	47,900
Banadir	1,010	100,300
Middle Shabelle	7,190	5,080
Galgaduud	1,590	1,570

BY DISTRICT (Jan - Dec 2023)

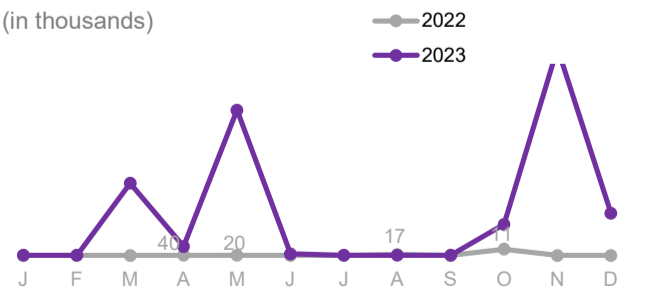


FLOOD DISPLACEMENTS

77,0001,691,70013,100

in December(Jan - Dec 2023)(Jan - Dec 2022)

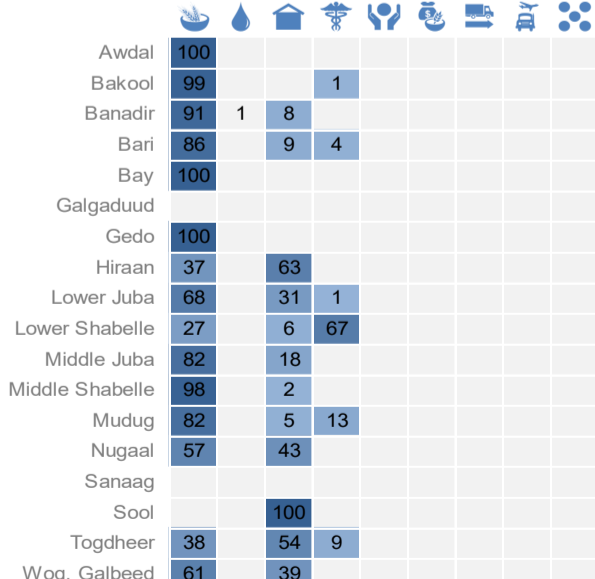
The highest displacements in November owing to floods were recorded in Hiraan (54,288) and Banadir (8,259) regions.



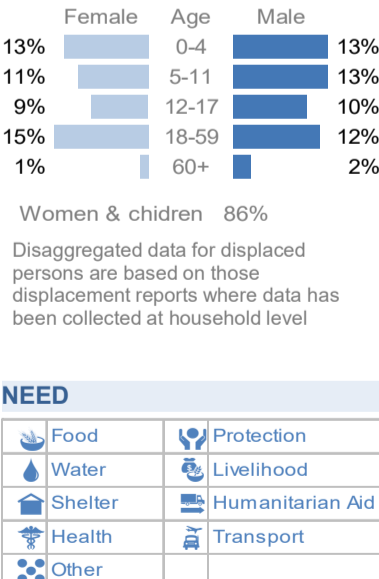
BY REGION (Jan - Dec 2023)

	DEP	ARR
Hiraan	545,570	544,860
Lower Shabelle	40,440	33,820
Middle Shabelle	15,100	12,840
Gedo	460,930	463,850
Lower Juba	133,940	135,370
Bari	6,300	6,800
Mudug	213,590	213,200
Banadir	21,780	31,010
Middle Juba	111,930	109,770
Galgaduud	14,380	14,380
Bakool	2,070	10
Bay	116,230	114,810
Awdal	1,100	1,100
Sool		
Woq. Galbeed	30	30
Sanaag	300	
Togdheer	1,680	1,680
Nugaal	6,360	6,670

PRIORITY NEED ON ARRIVAL (November in %)



AGE & GENDER (2023)



About PRMN

The PRMN (Protection & Return Monitoring Network) is a UNHCR-led project which identifies and reports on displacements (including returns) of populations in Somalia. The network also identifies and reports on protection risks and incidents underlying such movements. Only figures collected by PRMN are reported above. Not all displacements in Somalia are captured. This dashboard should be read in conjunction with the Notes on PRMN Methodology (<https://data2.unhcr.org/en/documents/details/53888>) which outline the approach and certain limitations. The figures shown are for numbers of individuals and are based on interviews with key informants and/or displaced households at destination (unless otherwise noted). Further information and datasets available on request use contact below.

UNHCR is grateful for the generous contributions of donors who have directly contributed to the UNHCR Somalia operation in 2023

