

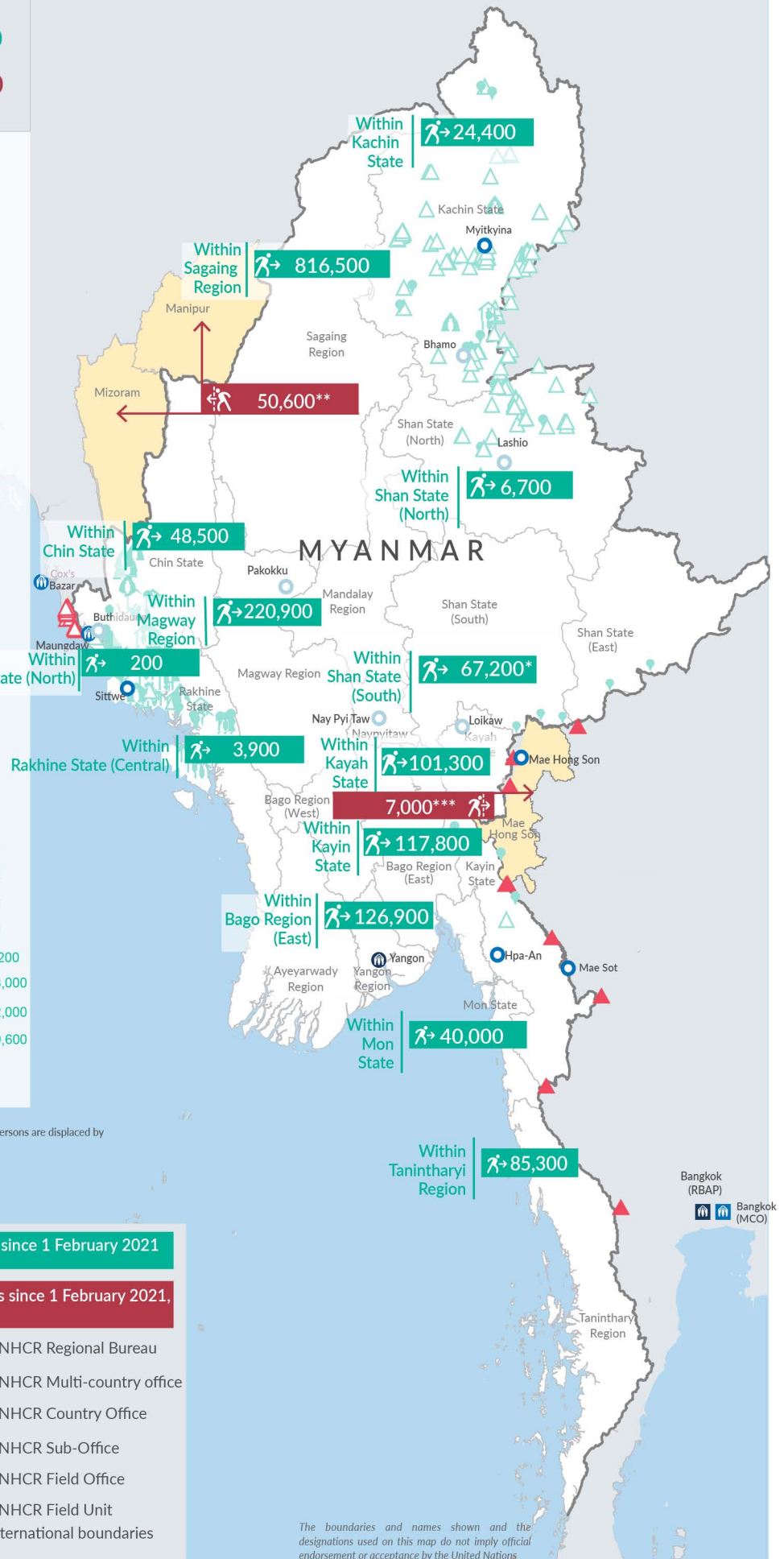
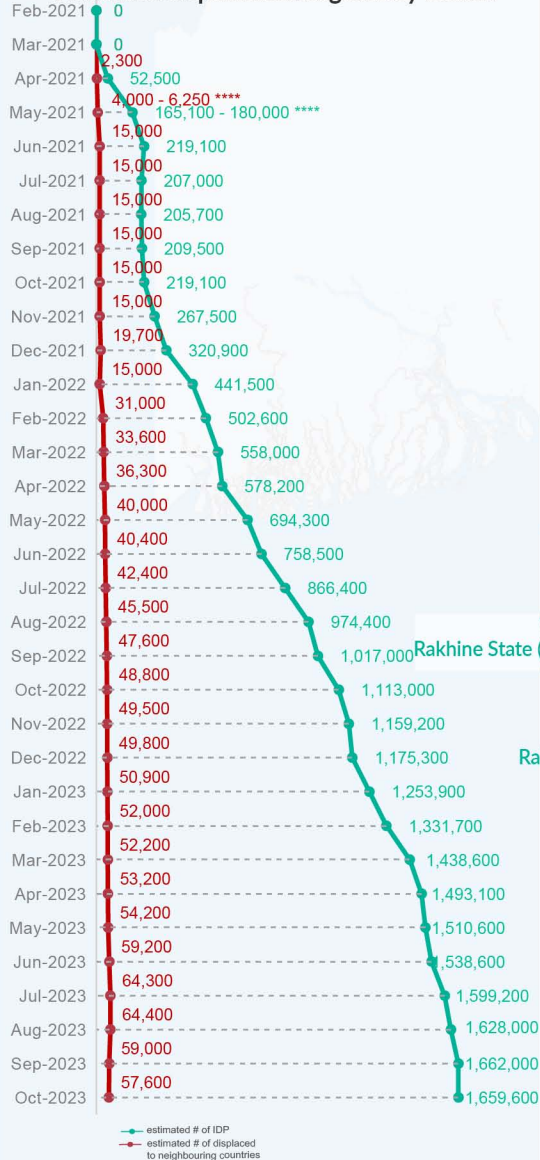
Key figures

Estimated # of IDPs → 1,659,600

Estimated # of displaced to neighbouring countries → 57,600

Source : UN in Myanmar

Estimated displacement figures by Month



*60,200 persons are displaced by armed conflict in neighbouring Kayah State while 7,000 persons are displaced by inter-EAO conflict between SSPP and RCSS.

**UN Estimates

***Estimates by Tak Border Command Center (TBCC)

****Range of figures was used while data collection was in progress.

Estimated internal displacement within Myanmar since 1 February 2021 (rounded to the nearest hundred)

Estimated displacement to neighbouring countries since 1 February 2021, who remain displaced (rounded to the nearest hundred)

- IDP unplanned settlement (pre-1 Feb 2021)
- IDP Center (pre-1 Feb 2021)
- IDP spontaneous location (pre-1 Feb 2021)
- IDP planned settlement (pre-1 Feb 2021)
- Temporary shelter for displaced people from Myanmar
- Refugee, planned settlement
- States/Provinces with new arrivals
- UNHCR Regional Bureau
- UNHCR Multi-country office
- UNHCR Country Office
- UNHCR Sub-Office
- UNHCR Field Office
- UNHCR Field Unit
- International boundaries


The boundaries and names shown and the designations used on this map do not imply official endorsement or acceptance by the United Nations

Key figures

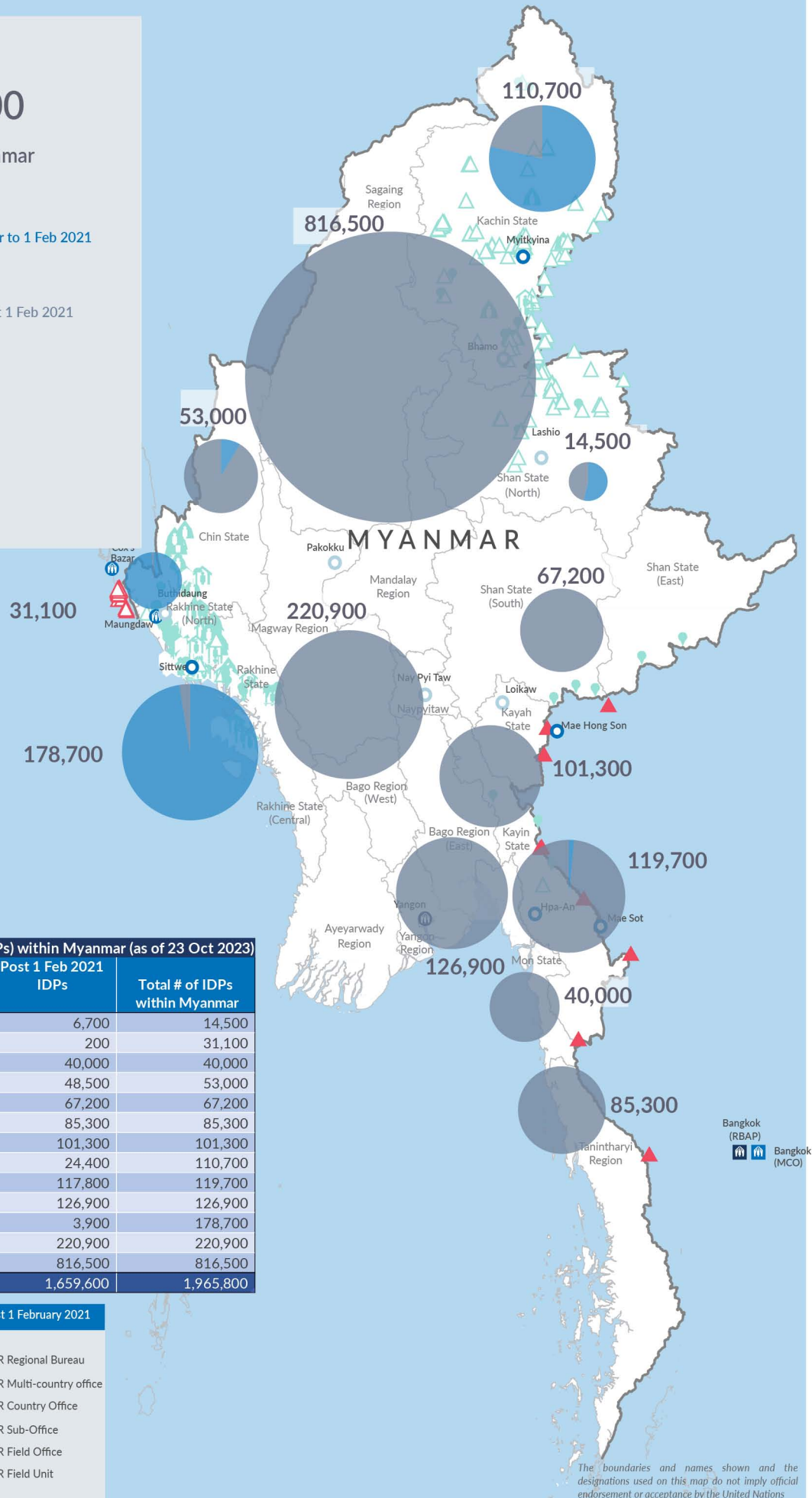

1,965,800

Estimated total IDPs within Myanmar


306,200
 Estimated # of IDPs displaced prior to 1 Feb 2021
(As of 30 Jun, 2023)

1,659,600
 Estimated # of IDPs displaced post 1 Feb 2021
(As of 23 Oct, 2023)
 Prior to 1 Feb 2021
 Post 1 Feb 2021

Source : UN in Myanmar


Estimated total internally displaced person (IDPs) within Myanmar (as of 23 Oct 2023)

| State/Region | Prior to 1 Feb 2021 IDPs | Post 1 Feb 2021 IDPs | Total # of IDPs within Myanmar |
|-------------------------|--------------------------|----------------------|--------------------------------|
| Shan State (North) | 7,800 | 6,700 | 14,500 |
| Rakhine State (North) | 30,900 | 200 | 31,100 |
| Mon State | - | 40,000 | 40,000 |
| Chin State | 4,500 | 48,500 | 53,000 |
| Shan State (South) | - | 67,200 | 67,200 |
| Tanintharyi Region | - | 85,300 | 85,300 |
| Kayah State | - | 101,300 | 101,300 |
| Kachin State | 86,300 | 24,400 | 110,700 |
| Kayin State | 1,900 | 117,800 | 119,700 |
| Bago Region (East) | - | 126,900 | 126,900 |
| Rakhine State (Central) | 174,800 | 3,900 | 178,700 |
| Magway Region | - | 220,900 | 220,900 |
| Sagaing Region | - | 816,500 | 816,500 |
| Grand Total | 306,200 | 1,659,600 | 1,965,800 |

Estimated internal displacement within Myanmar Pre+Post 1 February 2021
(rounded to the nearest hundred)

-  IDP unplanned settlement (pre-1 Feb 2021)
-  IDP Center (pre-1 Feb 2021)
-  IDP spontaneous location (pre-1 Feb 2021)
-  IDP planned settlement (pre-1 Feb 2021)
-  Temporary shelter for displaced people from Myanmar
-  Refugee, planned settlement
-  International boundaries
-  UNHCR Regional Bureau
-  UNHCR Multi-country office
-  UNHCR Country Office
-  UNHCR Sub-Office
-  UNHCR Field Office
-  UNHCR Field Unit

The boundaries and names shown and the designations used on this map do not imply official endorsement or acceptance by the United Nations