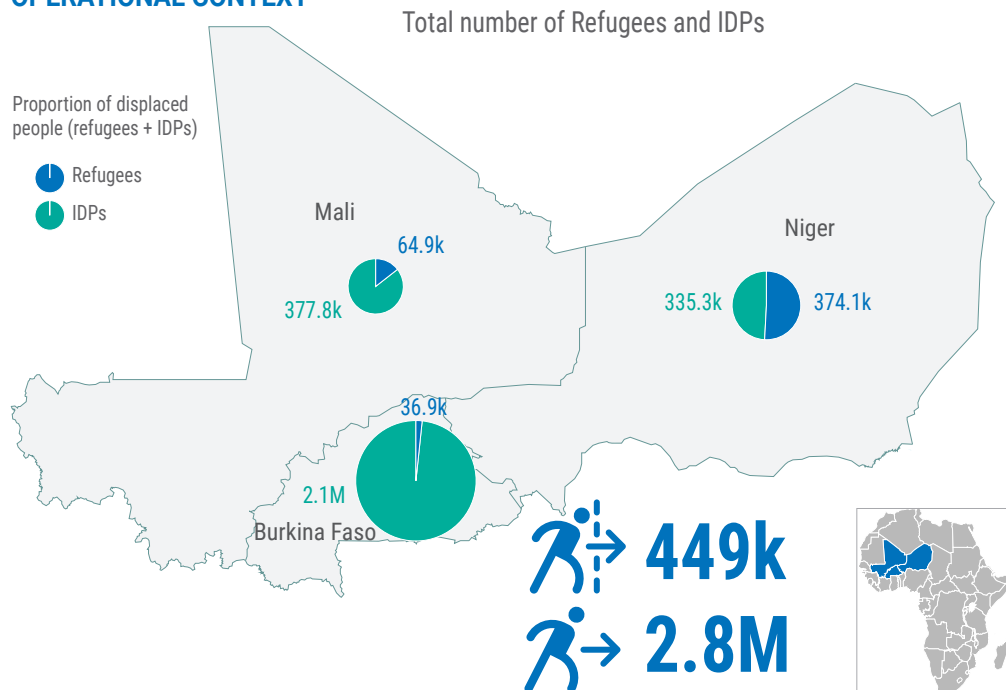
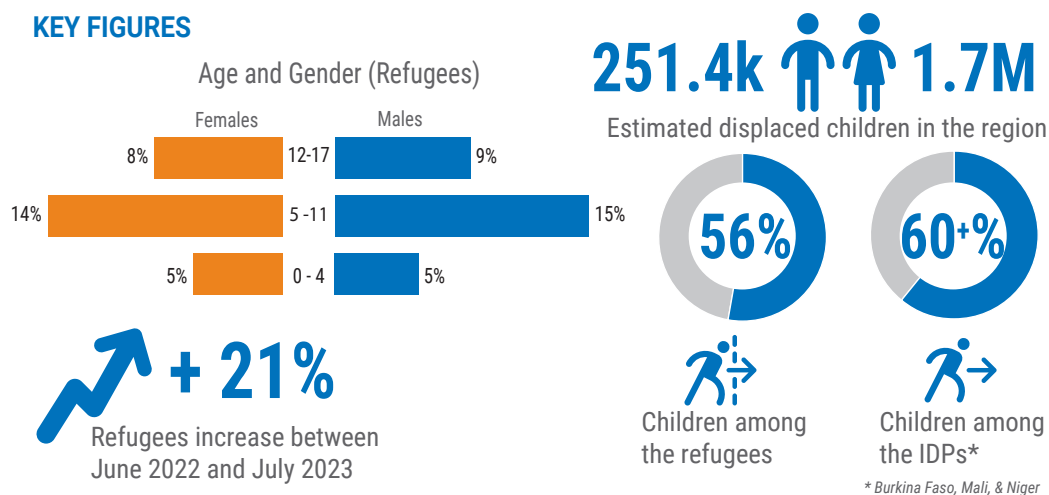


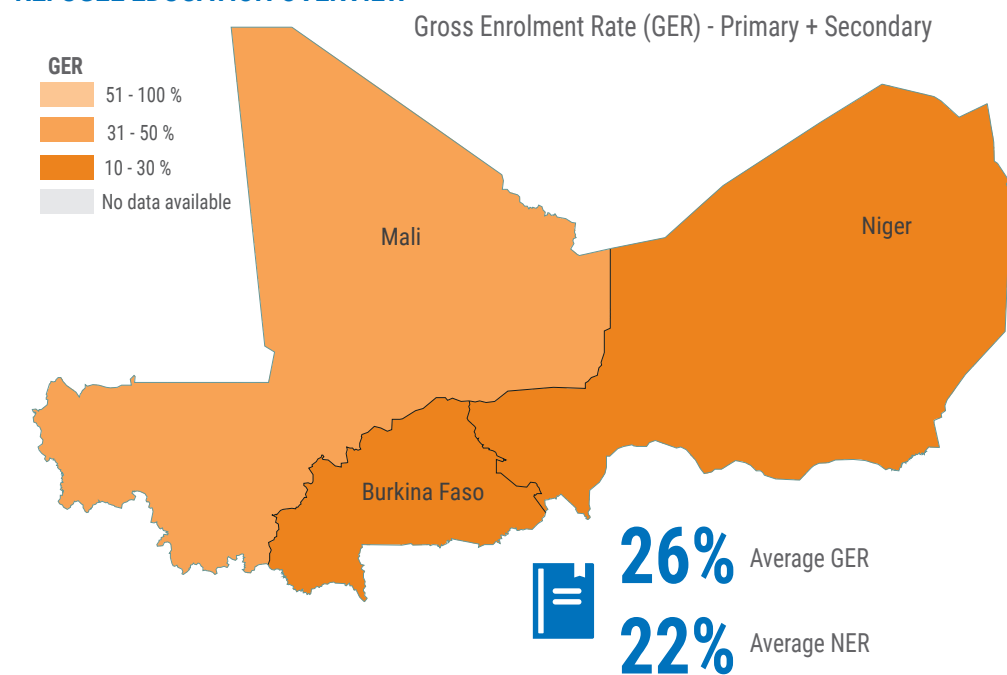
## OPERATIONAL CONTEXT



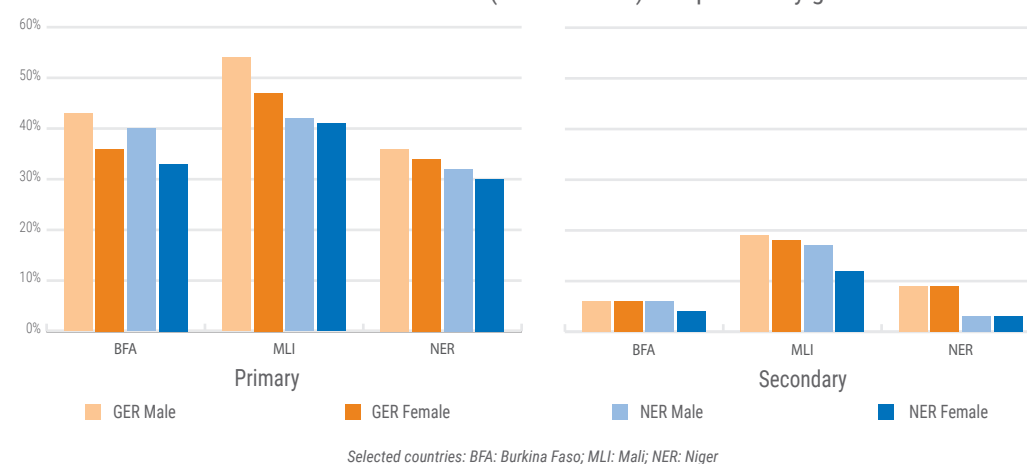
## KEY FIGURES



## REFUGEE EDUCATION OVERVIEW

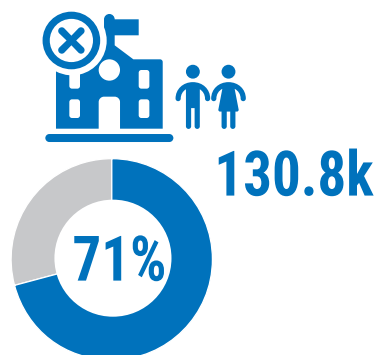


## Gross and Net Enrolment Rates (GER and NER) comparison by gender



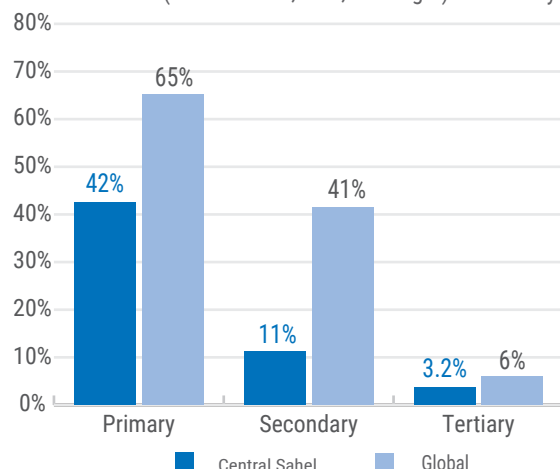
## REFUGEE EDUCATION OVERVIEW

Out of school children



Estimated proportion of refugee children out of school

Comparison of refugee enrolment rates by school level for Central Sahel (Burkina Faso, Mali, and Niger) vs Globally

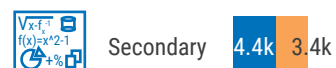
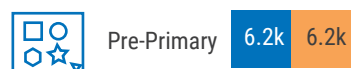


\* The estimated proportion of 18-24 youth enrolled in higher education or technical and vocational education and training (TVET).

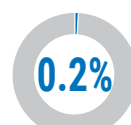
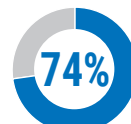
\*\* Global enrolment rates refer to the 2021-2022 school year.

## UNHCR'S EDUCATION RESPONSE AND ASSISTANCE

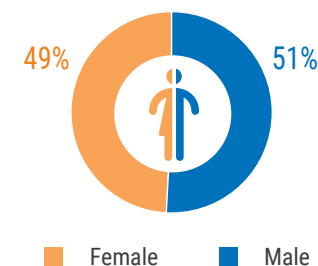
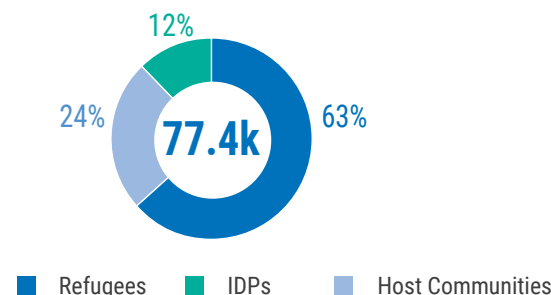
Children/youth reached by level



Male Female



Children/youth reached by status



## KEY ACHIEVEMENTS



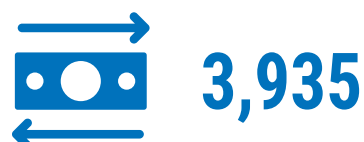
Classrooms built or rehabilitated



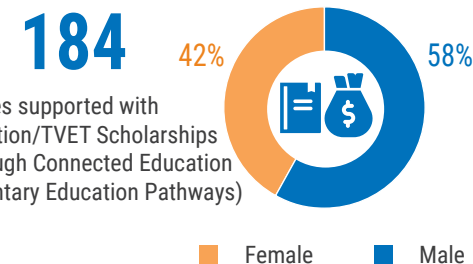
Schools supported with WASH interventions



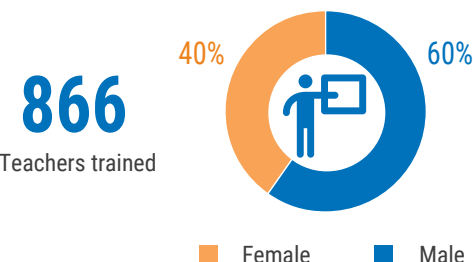
Children assisted with school kits



Children assisted with cash-based interventions (CBI)



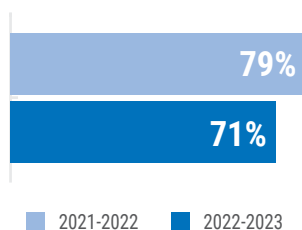
Refugees supported with Higher Education/TVET Scholarships (including through Connected Education and Complementary Education Pathways)



Teachers trained

### SCHOOL YEAR COMPARISON 2021/22 vs 2022/23

Out of school children

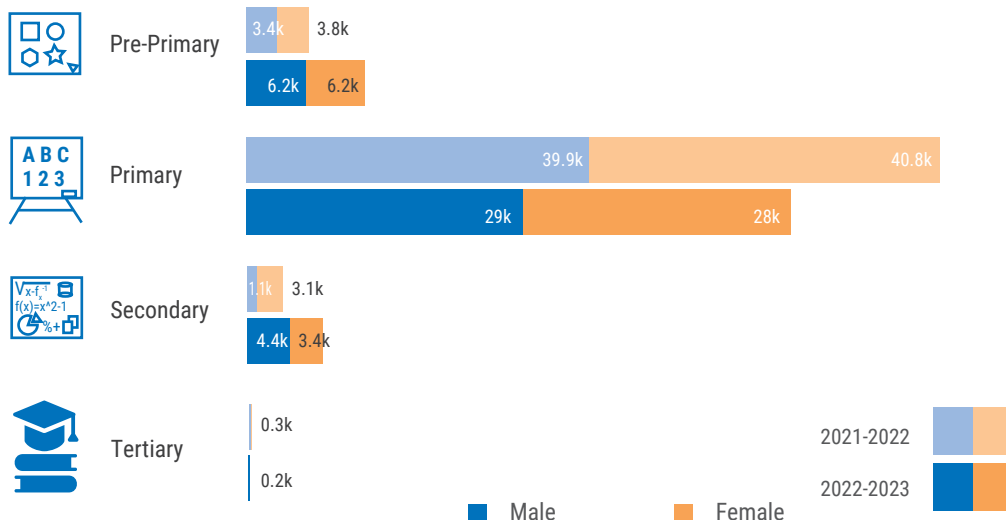


Estimated proportion of refugee children out of school by school year

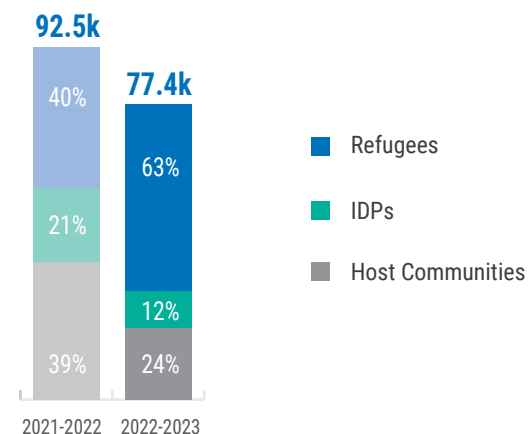
\* The estimated proportion of 18-24 youth enrolled in higher education or technical and vocational education and training (TVET).

### UNHCR'S EDUCATION RESPONSE AND ASSISTANCE 2021/22 vs 2022/23

Children/youth reached by level



### CHILDREN/YOUTH REACHED BY STATUS 2021/22 vs 2022/23



### KEY ACHIEVEMENTS 2021/22 vs 2022/23



Refugees supported with Higher Education Scholarships



Children assisted with cash-based interventions (CBI)



Children assisted with school kits



Classrooms built or rehabilitated



Teachers trained

