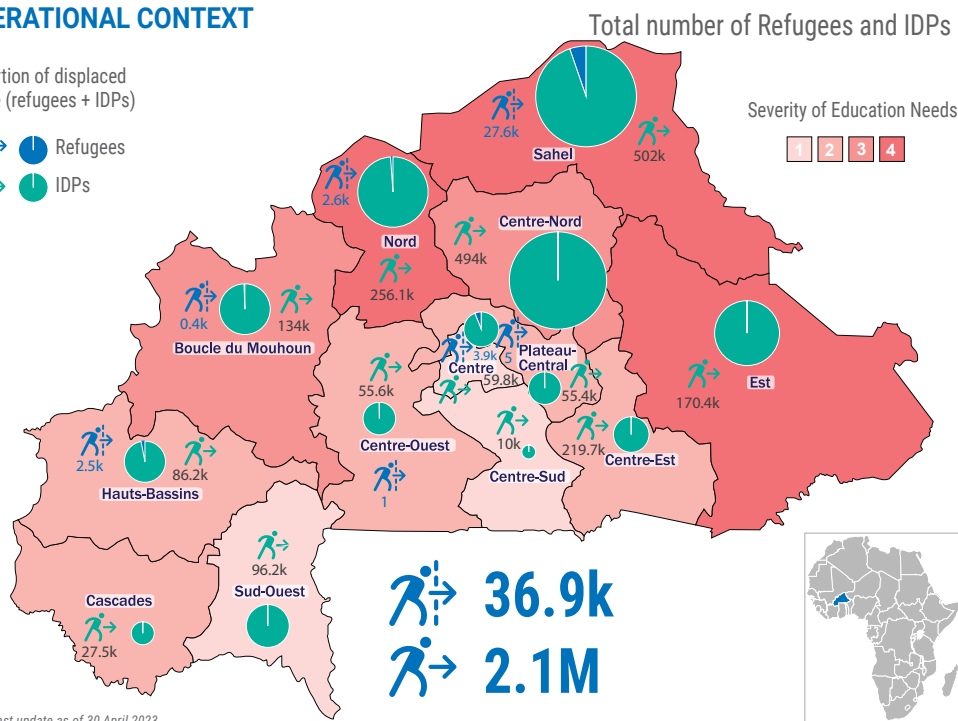
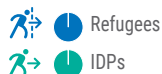


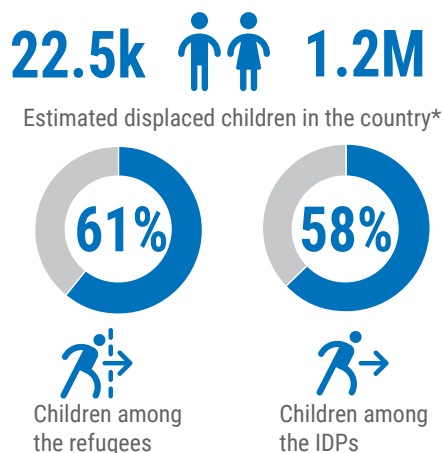
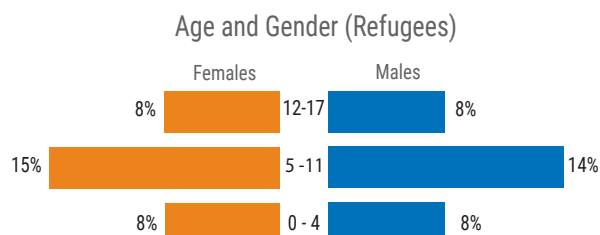
OPERATIONAL CONTEXT

Proportion of displaced people (refugees + IDPs)



* Last update as of 30 April 2023

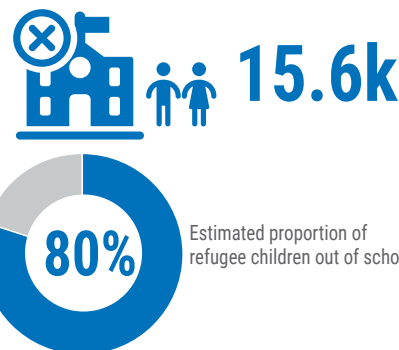
KEY FIGURES



* Sources: UNHCR Burkina Faso, CONASUR, July 2023.

REFUGEE EDUCATION OVERVIEW

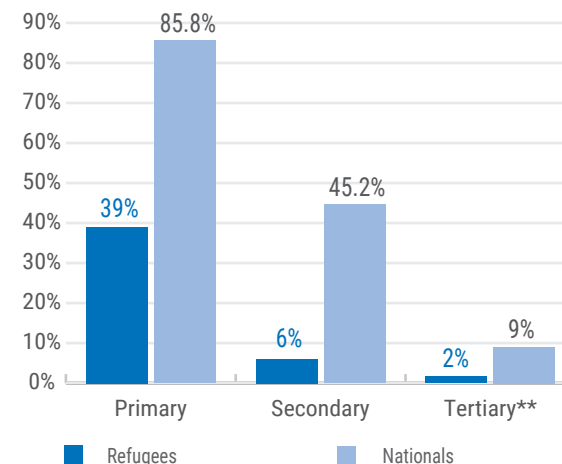
Out of school children



Average GER and NER: Primary + Secondary



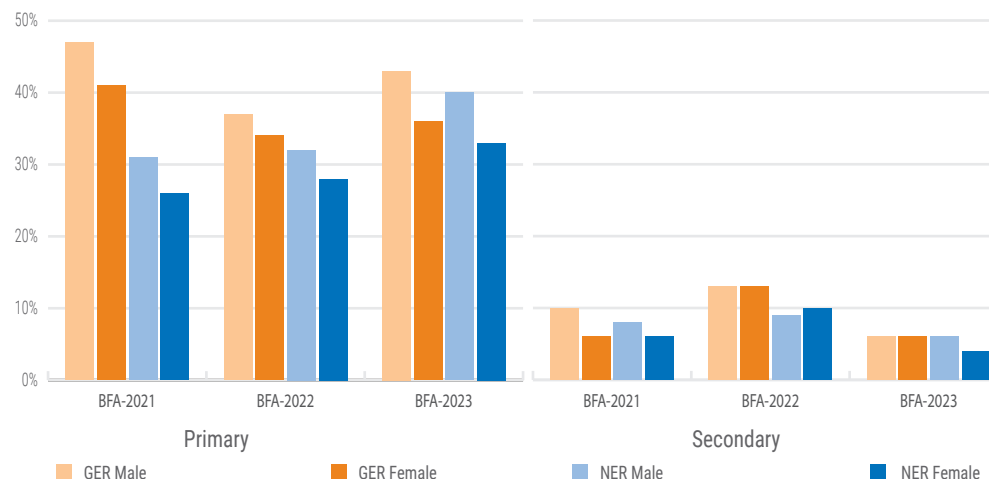
Comparison of refugee enrolment rates by school level for refugees vs nationals*



* Source: Ministry of National Education, Literacy, and the Promotion of National Languages, Ministry of Higher Education, 2021/2022 School year. cns.bf

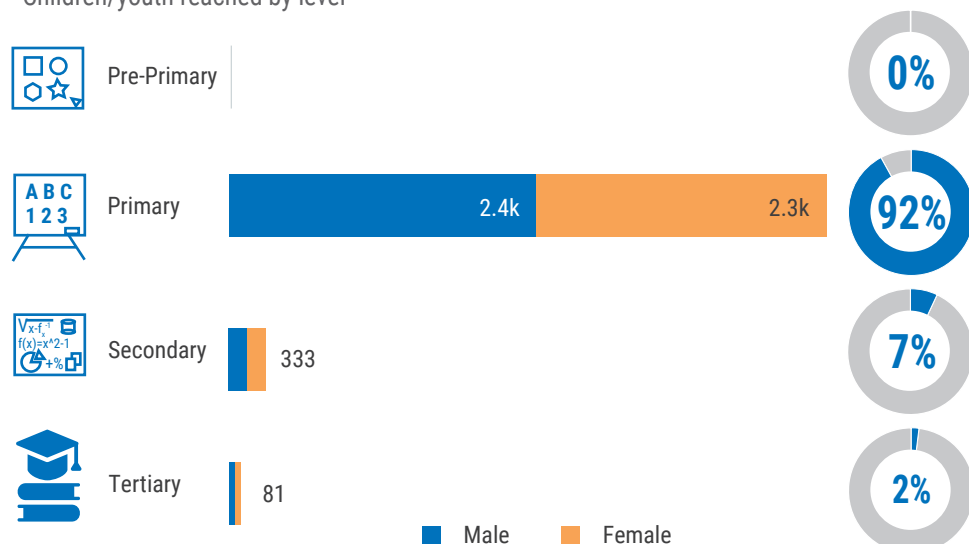
** The estimated proportion of 18-24 youth enrolled in higher education or technical and vocational education and training (TVET).

Gross and Net Enrolment Rates (GER and NER) comparison by gender and by school year

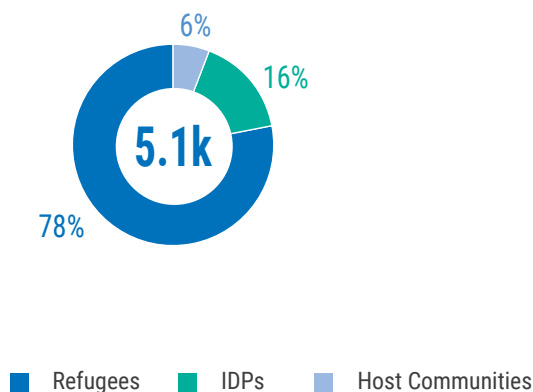


UNHCR'S EDUCATION RESPONSE AND ASSISTANCE

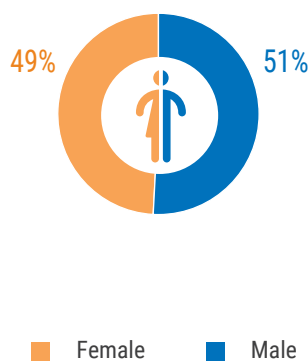
Children/youth reached by level



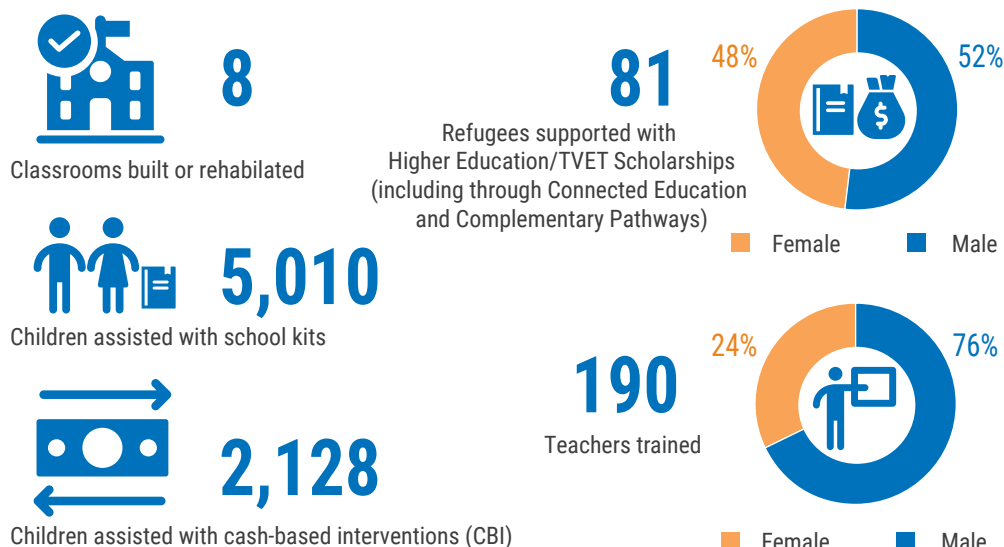
Children/youth reached by protection status



Children/youth reached by gender



KEY ACHIEVEMENTS

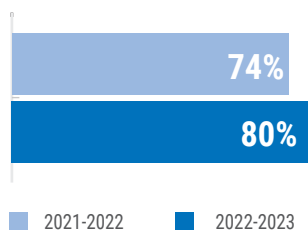


KEY HIGHLIGHTS

- There has been a 7-point drop in the post-primary and secondary school enrolment rate for refugees compared with the previous school year, mainly due to the closure of many schools in several refugee-hosting regions of the country (including the secondary school near the Goudoubo camp, which closed in 2022), as well as insufficient financial resources to support the inclusion of all refugees in the national education system.
- Increasing the capacity of school infrastructure (classrooms, teachers, teaching materials) in schools hosting refugees would help improve post-primary and secondary school enrolment rates.
- During the 2022-2023 school year, UNHCR supported the construction of two multimedia classrooms (in Dori and Bobo Dioulasso) and the distribution of school kits to 3,900 refugee, IDP and host community children, in order to strengthen access to education at primary, post-primary and secondary levels.
- At tertiary level, the DAFI scholarship program has enabled 23 young refugees to undertake higher education. In addition, partnerships developed by UNHCR with the Agence Universitaire de la Francophonie (AUF), SIMPLON and the humanitarian training institute BIOFORCE enabled 20 refugees to access certified vocational training in the digital and humanitarian sectors.

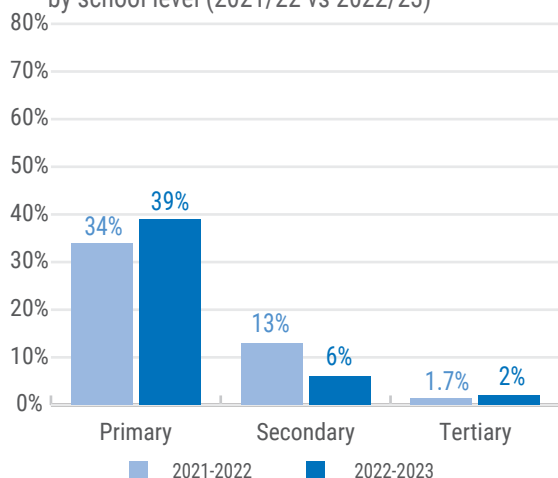
SCHOOL YEAR COMPARISON 2021/22 vs 2022/23

Out of school children



Estimated proportion of refugee children out of school by school year

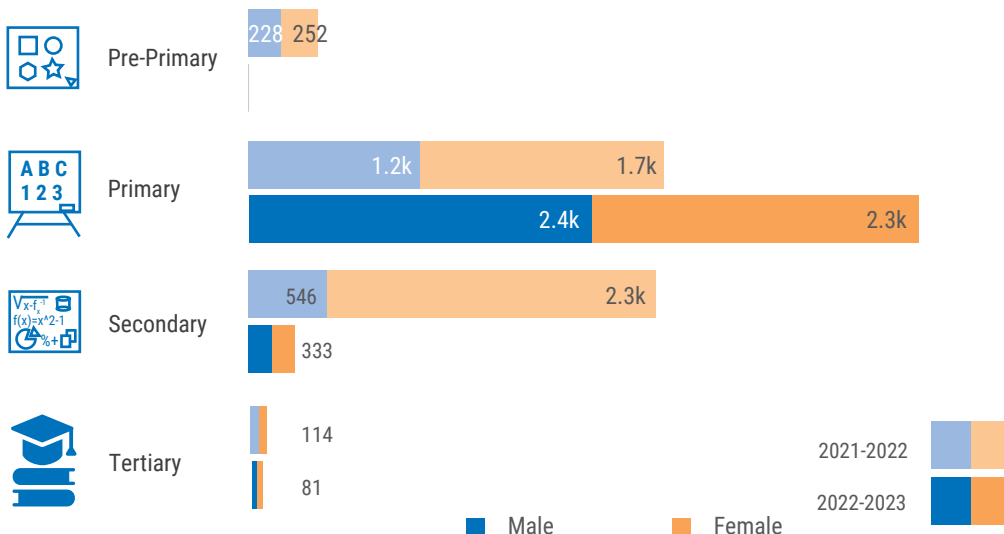
Comparison of refugee enrolment rates in Burkina Faso by school level (2021/22 vs 2022/23)



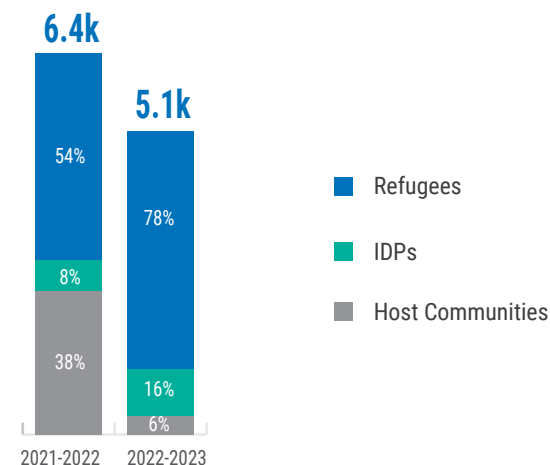
* The estimated proportion of 18-24 youth enrolled in higher education or technical and vocational education and training (TVET).

UNHCR'S EDUCATION RESPONSE AND ASSISTANCE 2021/22 vs 2022/23

Children/youth reached by level



CHILDREN/YOUTH REACHED BY STATUS 2021/22 vs 2022/23



KEY ACHIEVEMENTS 2021/22 vs 2022/23

