

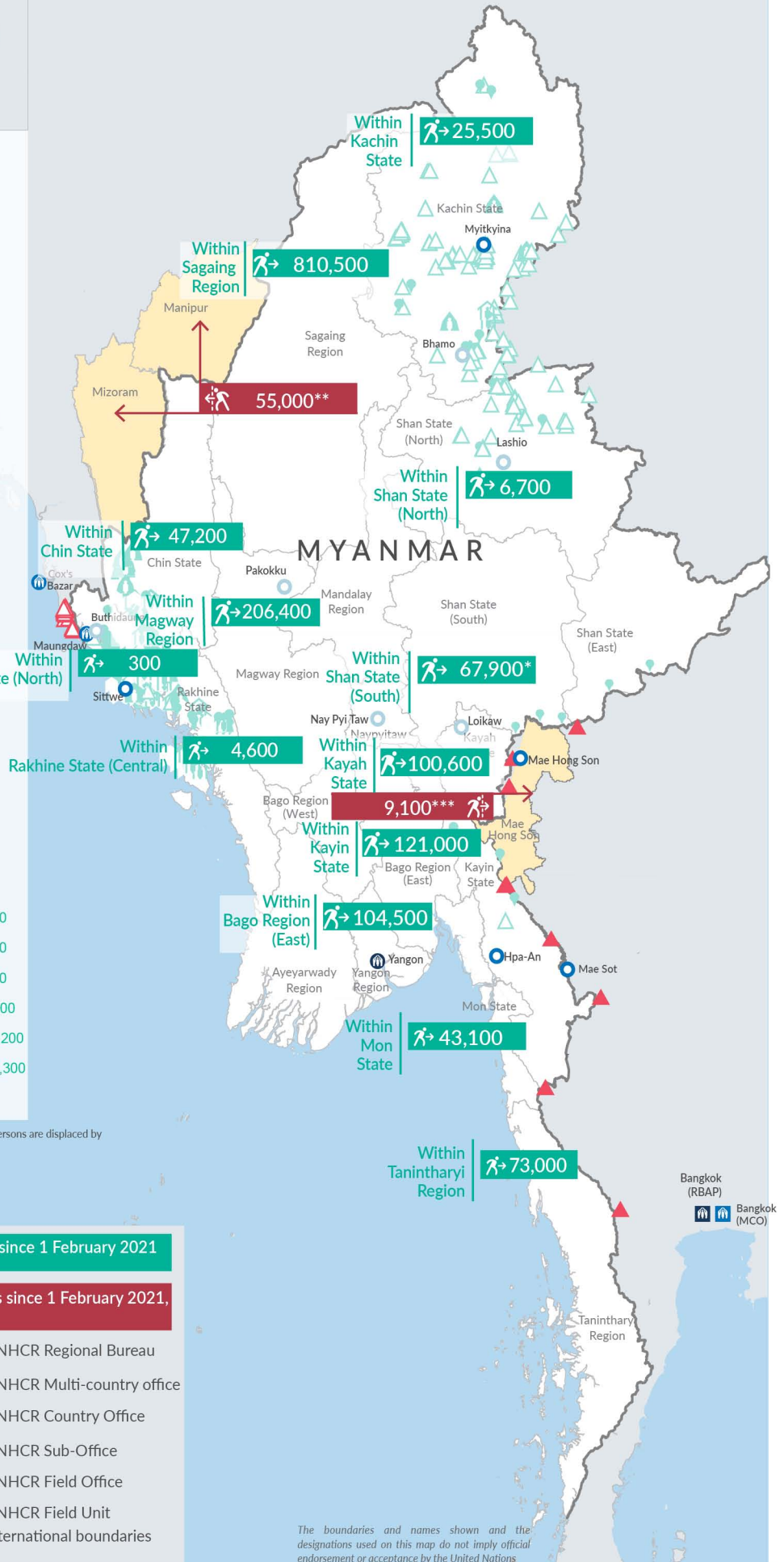
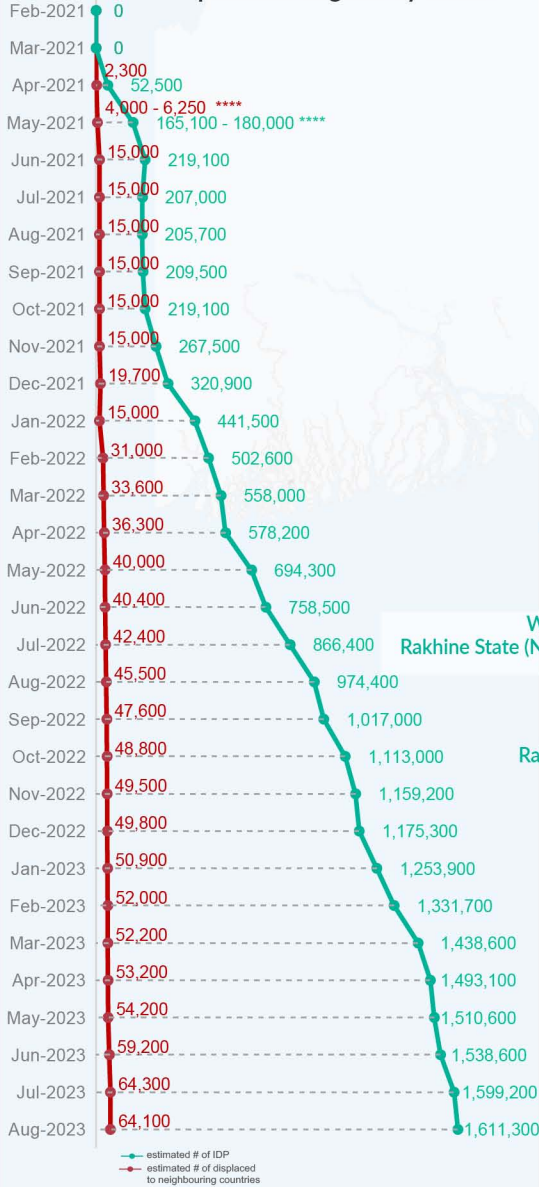
### Key figures

Estimated # of IDPs → 1,611,300

Estimated # of displaced to neighbouring countries → 64,100

Source : UN in Myanmar

### Estimated displacement figures by Month



\*61,000 persons are displaced by armed conflict in neighbouring Kayah State while 6,900 persons are displaced by inter-EAO conflict between SSPP and RCSS.

\*\*UN Estimates

\*\*\*Estimates by Tak Border Command Center (TBCC)

\*\*\*\*Range of figures was used while data collection was in progress.

Estimated internal displacement within Myanmar since 1 February 2021 (rounded to the nearest hundred)

Estimated displacement to neighbouring countries since 1 February 2021, who remain displaced (rounded to the nearest hundred)

- IDP unplanned settlement (pre-1 Feb 2021)
- IDP Center (pre-1 Feb 2021)
- IDP spontaneous location (pre-1 Feb 2021)
- IDP planned settlement (pre-1 Feb 2021)
- Temporary shelter for displaced people from Myanmar
- Refugee, planned settlement
- States/Provinces with new arrivals
- UNHCR Regional Bureau
- UNHCR Multi-country office
- UNHCR Country Office
- UNHCR Sub-Office
- UNHCR Field Office
- UNHCR Field Unit
- International boundaries

The boundaries and names shown and the designations used on this map do not imply official endorsement or acceptance by the United Nations

## Key figures


**1,917,500**

Estimated total IDPs within Myanmar

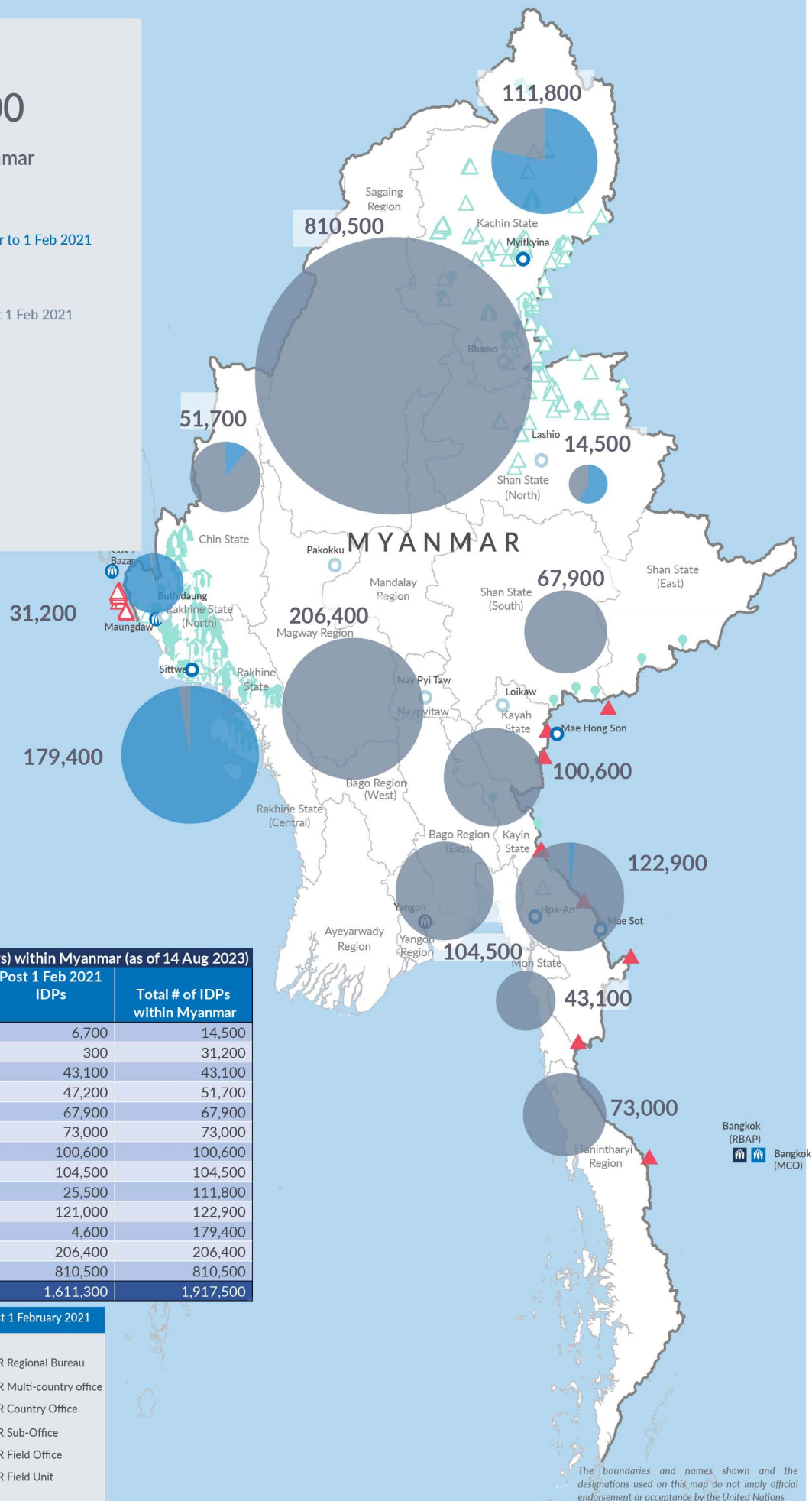

**306,200**  
 Estimated # of IDPs displaced prior to 1 Feb 2021  
 (As of 30 Jun, 2023)


**1,611,300**  
 Estimated # of IDPs displaced post 1 Feb 2021  
 (As of 14 Aug, 2023)


 Prior to 1 Feb 2021


 Post 1 Feb 2021

Source : UN in Myanmar


**Estimated total internally displaced person (IDPs) within Myanmar (as of 14 Aug 2023)**

State/Region	Prior to 1 Feb 2021 IDPs	Post 1 Feb 2021 IDPs	Total # of IDPs within Myanmar
Shan State (North)	7,800	6,700	14,500
Rakhine State (North)	30,900	300	31,200
Mon State	-	43,100	43,100
Chin State	4,500	47,200	51,700
Shan State (South)	-	67,900	67,900
Tanintharyi Region	-	73,000	73,000
Kayah State	-	100,600	100,600
Bago Region (East)	-	104,500	104,500
Kachin State	86,300	25,500	111,800
Kayin State	1,900	121,000	122,900
Rakhine State (Central)	174,800	4,600	179,400
Magway Region	-	206,400	206,400
Sagaing Region	-	810,500	810,500
<b>Grand Total</b>	<b>306,200</b>	<b>1,611,300</b>	<b>1,917,500</b>

**Estimated internal displacement within Myanmar Pre+Post 1 February 2021 (rounded to the nearest hundred)**

-  IDP unplanned settlement (pre-1 Feb 2021)
-  IDP Center (pre-1 Feb 2021)
-  IDP spontaneous location (pre-1 Feb 2021)
-  IDP planned settlement (pre-1 Feb 2021)
-  Temporary shelter for displaced people from Myanmar
-  Refugee, planned settlement
-  International boundaries
-  UNHCR Regional Bureau
-  UNHCR Multi-country office
-  UNHCR Country Office
-  UNHCR Sub-Office
-  UNHCR Field Office
-  UNHCR Field Unit

The boundaries and names shown and the designations used on this map do not imply official endorsement or acceptance by the United Nations