



UNHCR
The UN Refugee Agency

DIMA - RBSA

Data, Identity Management and Analysis - Regional Bureau for Southern Africa

Population Data Analysis

**Regional Bureau for
Southern Africa**

April 2023

Overview

As of the end of April 2023, Southern Africa hosts around **8.7 million people that UNHCR has the mandate and responsibility to protect and assist**. This includes almost 776,300 refugees, 197,700 asylum-seekers, 29,600 others of concern,¹ 7.1 million internally displaced persons (IDPs) induced by conflicts, as well as returned refugees of more than 500 and 510,000 returned IDPs. In addition, 1.2 million IDPs are induced by climate change and disaster. The increase from the previous month is mainly caused by the growth in new internal displacements and IDPs returns in the DRC. **The Democratic Republic of Congo (DRC) hosts 82 per cent of the population in the region.**

Refugees, Asylum-Seekers and Others of Concern

The 1 million refugees, asylum-seekers and others of concern has recorded a decrease compare to last year population figure. From the above mentioned figure, 75 per cent originate from countries outside Southern Africa region.² The top five countries of origin: Central African Republic (242,500), Rwanda (238,000), Democratic Republic of the Congo (214,400), Burundi (83,600) and South Sudan (56,700).

Internally Displaced Persons (IDPs)

In the Southern Africa region, **86 per cent of the internally displacements is caused by conflicts**.³ Around 510,000 individuals returned from internal displacement in DRC. The increase of IDPs from last month is observed in DRC. The number of returned IDPs has moved from around 145,600 to 510,400, increased by 251 per cent, contributing to increases of total population. IDPs induced by conflicts are reported in DRC, Congo and Mozambique, and IDPs induced by disaster are reported in DRC, Malawi, Mozambique and Zimbabwe.

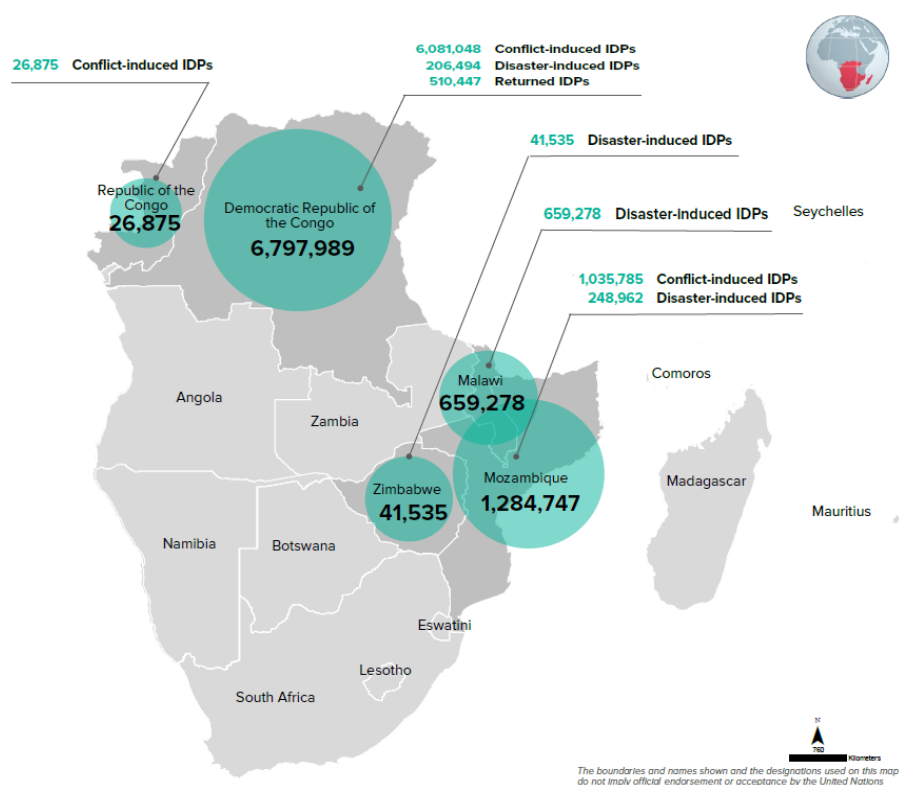


Figure 1. Number of IDPs as of 30 April 2023.

Education

As of April 2023, among refugee children with recorded education levels in the region, 40 per cent has had no education. Thirty-six per cent attained Grade six or lower level of education. Those who have achieved between Grade seven and fourteen or vocational education are 21 per cent. Only two per cent have attended university or post-graduate level. This low percentage impact the ability of forcibly displaced persons to participate in enhancing their livelihoods and general well-being meaningfully.

Data Sources: proGres v4 (PRIMES), government, OCHA and IOM DTM.

¹ Others of concern refer to those who are linked to (but not classified as) refugees and asylum-seekers, and who need assistance by UNHCR. In most cases in Southern Africa, they are family members, i.e., spouse or children, of refugees or asylum-seekers.

² Southern Africa region refers to the 16 countries covered by the Regional Bureau for Southern Africa of UNHCR including Angola, Botswana, Comoros, Congo, DRC, Eswatini, Lesotho, Madagascar, Malawi, Mauritius, Mozambique, Namibia, Seychelles, South Africa, Zambia and Zimbabwe.

³ The number of IDPs in DRC is as of 31 March 2023.

KEY FIGURES



8,658,269

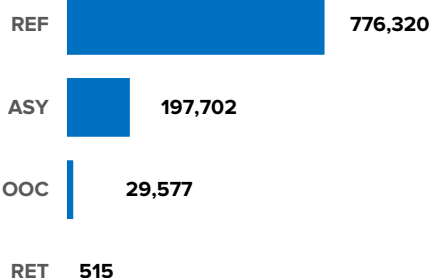
FORCIBLY DISPLACED PEOPLE & RETURNEES¹

As a result of persecution, conflict, violence, human rights violations, or events seriously disturbing public order.



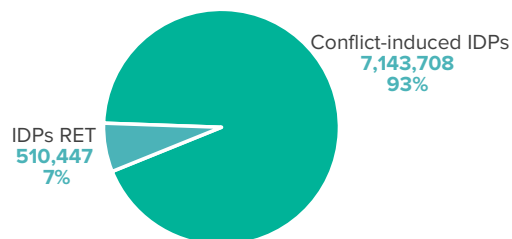
1,004,114

Refugees, asylum-seekers, other of concern & returnees (12% of the overall forcibly displaced people and returnees population)**

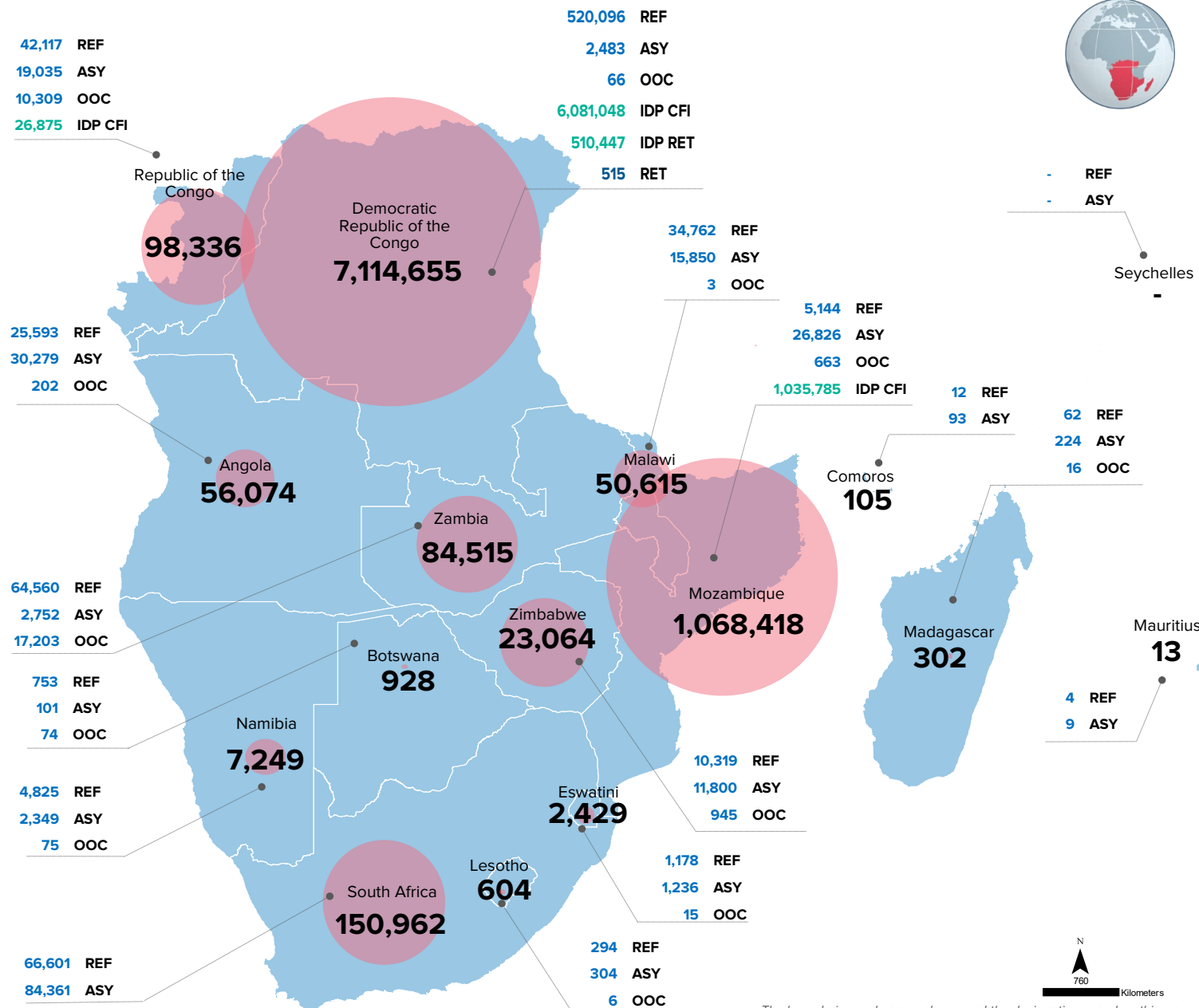


7,654,155

Conflict-induced IDPs and returned IDPs (88% of the overall forcibly displaced people and returnees population)**



MAP OF POPULATIONS THAT UNHCR IS MANDATED TO PROTECT AND ASSIST



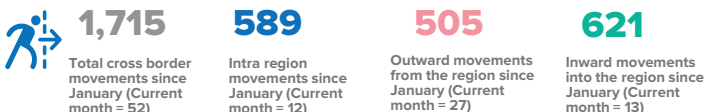
The boundaries and names shown and the designations used on this map do not imply official endorsement or acceptance by the United Nations

¹ In addition, there are 1,156,269 people displaced internally in the context of disasters and climate change. The displacement occurred in the following countries: Malawi (659,278), Mozambique (248,962), The Democratic Republic of the Congo (206,494) and Zimbabwe (41,535).

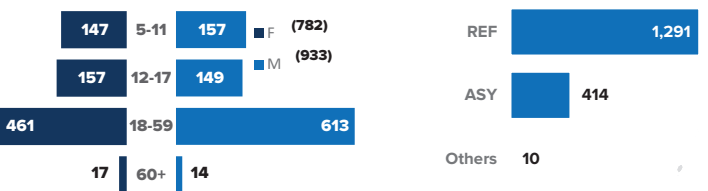
REFUGEES AND ASYLUM-SEEKERS INVOLVED IN CROSS BORDER MOVEMENTS IN SOUTHERN AFRICA

As of 30 April 2023

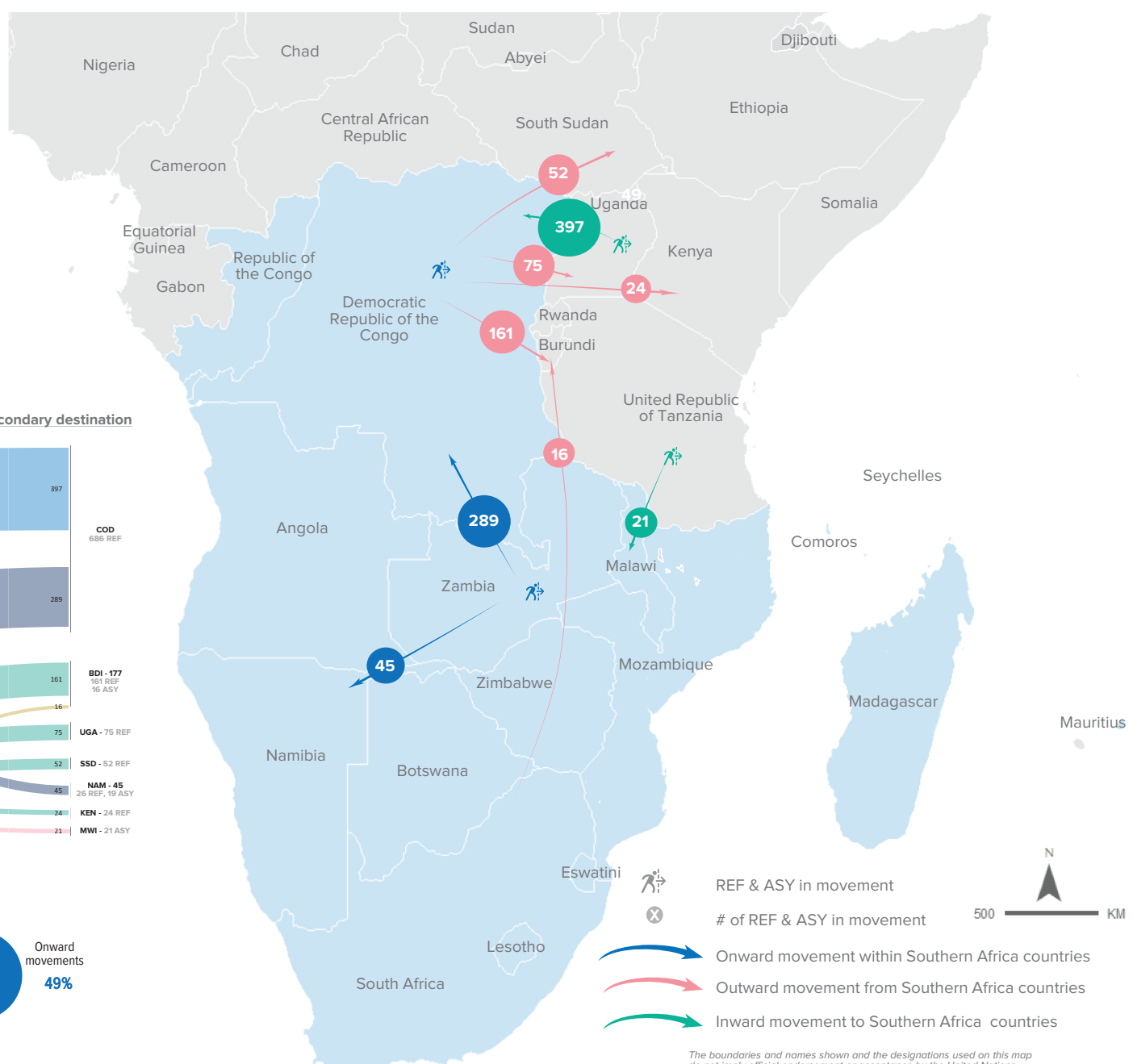
CUMULATIVE CROSS BORDER MOVEMENTS KEY FIGURES



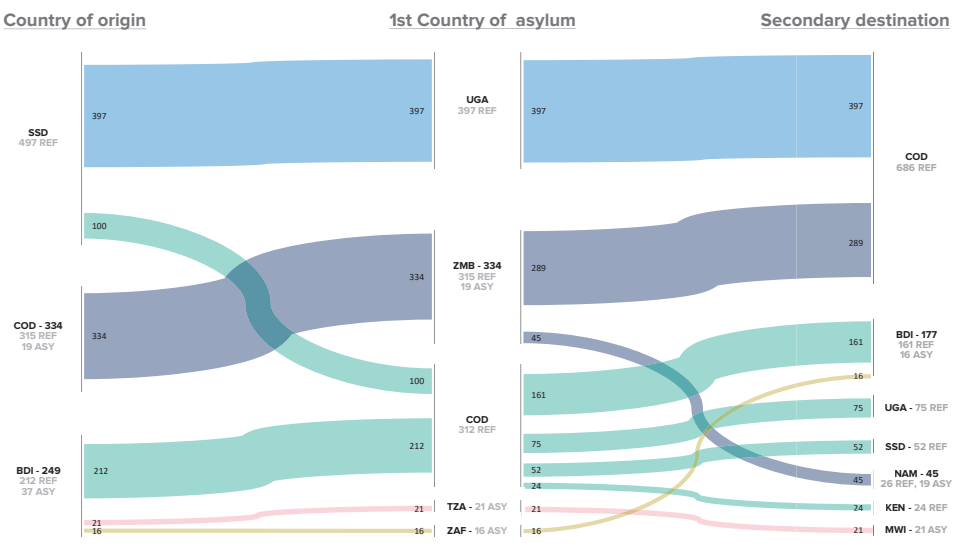
AGES, GENDER AND LEGAL STATUS OF MOVERS **



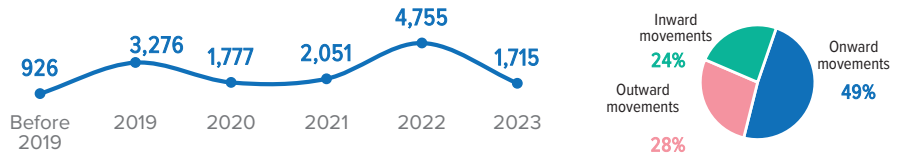
MAP OF CUMULATIVE CROSS BORDER MOVEMENTS WHERE THE FLOW INVOLVED 15 REFUGEES AND ASYLUM-SEEKERS OR MORE



CUMULATIVE CROSS BORDER MOVEMENTS WHERE THE FLOW INVOLVED 15 REFUGEES AND ASYLUM-SEEKERS OR MORE ***



CUMULATIVE CROSS BORDER MOVEMENTS TREND PER YEAR AND PROPORTIONS SINCE 2019



* The flows shown are restricted only to movements of a minimum group people, therefore the totals is different from the overall movements of the month due to the exclusion. In case of the same country of origin and first country of asylum, due to the change of nationality of some PoCs, country of origin are replaced with the previous nationality.

** REF = Refugee, ASY = Asylum-Seeker, OOC = Other person of concern *** All countries were named according to the ISO 3 Codes. BDI = Burundi, COD = Democratic Republic of the Congo, COG = Republic of the Congo, SSD = South Sudan, KEN = Kenya, UGA = Uganda, MWI = Malawi, MOZ = Mozambique, NAM = Namibia, TZA = Tanzania, ZMB = Zambia, ZWE = Zimbabwe

The boundaries and names shown and the designations used on this map do not imply official endorsement or acceptance by the United Nations

Data sources: UNHCR PRIMES. For more information or to contribute, please contact UNHCR RBSA DIMA (rsarbdima@unhcr.org)

KEY FIGURES



1,836

Total Individuals repatriated since January 2023

503

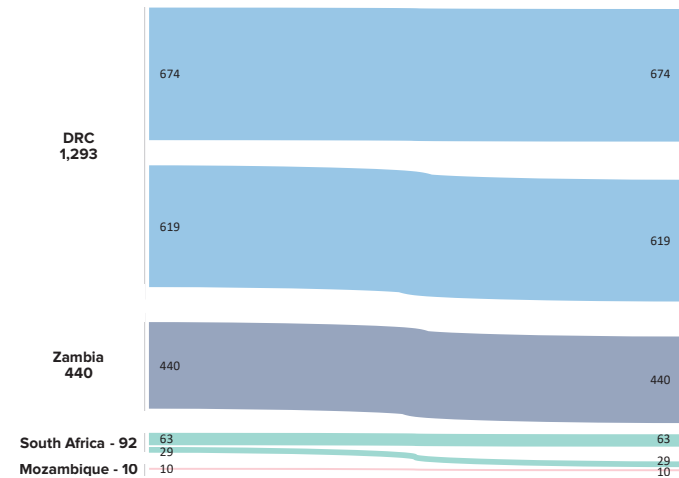
Individuals repatriated **within Southern Africa Region** since January 2023

1,333

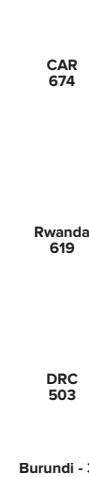
Individuals repatriated **from Southern Africa Region** to other countries outside of the region since January 2023

VOLREP* WHERE THE FLOW INVOLVE 10 REFUGEES OR MORE

Country of Asylum

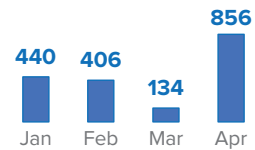


Country of Repatriation



TRENDS

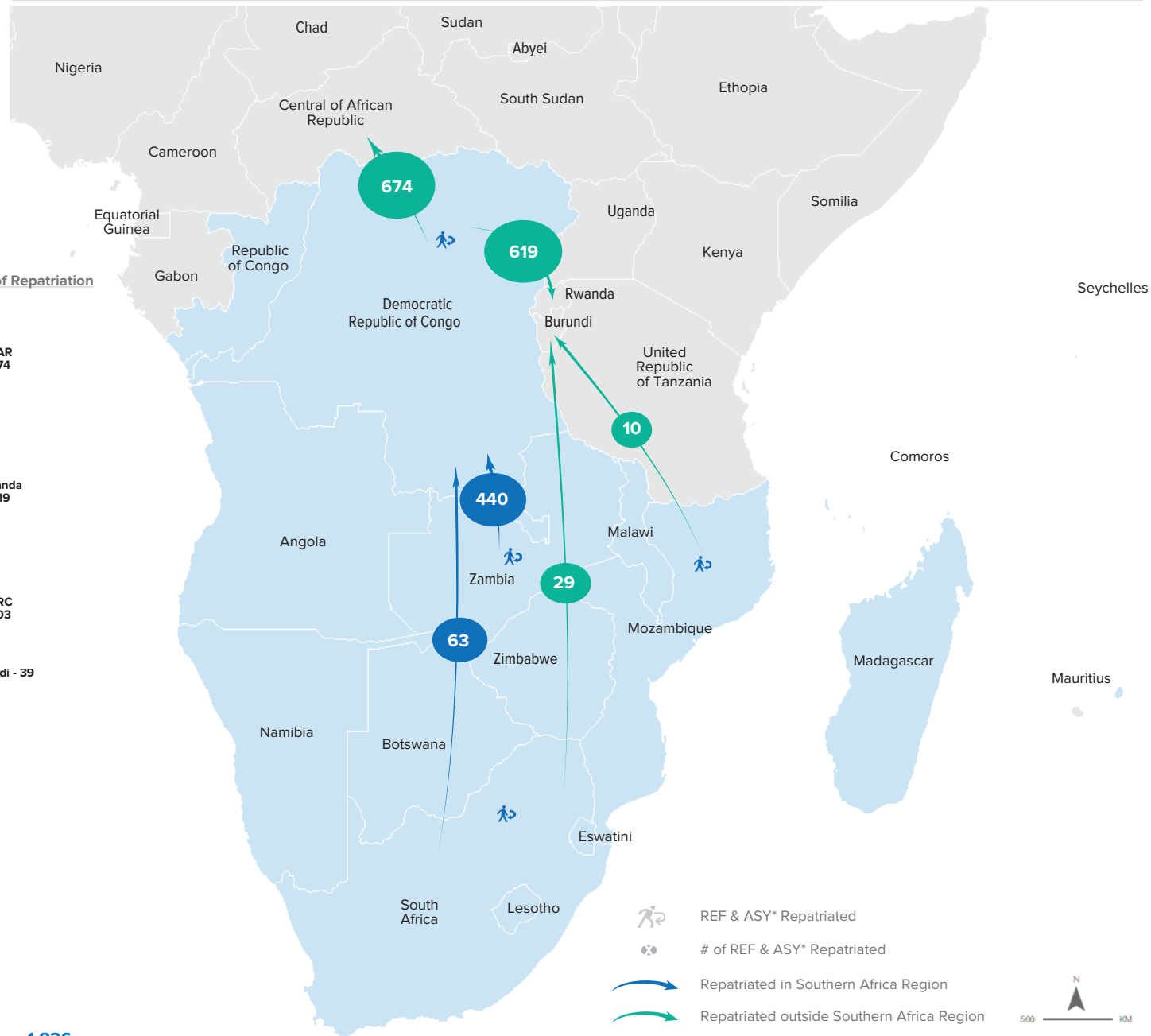
MONTHLY REPATRIATION SINCE JANUARY



ANNUAL REPATRIATION SINCE 2019



MAP OF VOLUNTARY REPATRIATION FLOW OF REFUGEES AND ASYLUM SEEKERS



REF & ASY* Repatriated



of REF & ASY* Repatriated



Repatriated in Southern Africa Region



Repatriated outside Southern Africa Region



The boundaries and names shown and the designations used on this map do not imply official endorsement or acceptance by the United Nations

KEY FIGURES



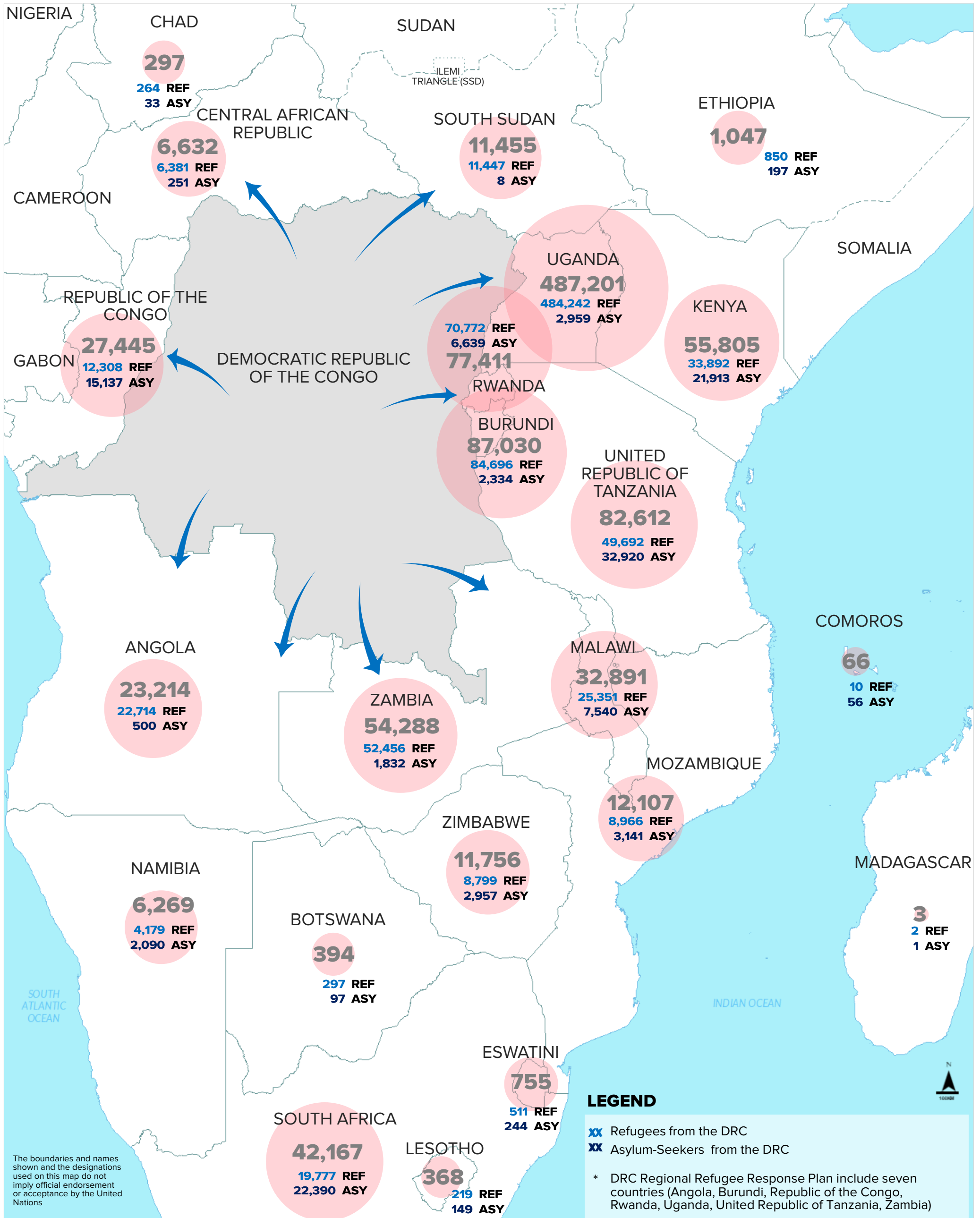
1,021,213
Total Refugees and
Asylum-seekers



897,825
Refugees



123,388
Asylum-seekers





Forcibly displaced and returned persons in southern Africa, Data as of 30 April 2023*

Country of Asylum	Location**			Self-settled***	Population Group								Total
	Name	Longitude (X)	Latitude (Y)		Refugee	Asylum-Seeker	Other of Concern	IDP by Conflict	Returned IDP	Refugee Returnee	Statelessness	Host Community	
Democratic Republic of the Congo*	Other			No	378,864	2,233	66	5,718,843	510,447	515	-	-	6,610,968
	IDP Camp			No	-	-	-	362,205	-	-	-	-	362,205
	Lusenda	29.0944	-3.8879	No	26,620	-	-	-	-	-	-	-	26,620
	Meri	30.2019	3.8486	No	26,445	18	-	-	-	-	-	-	26,463
	Inke	20.7673	4.0905	No	18,058	-	-	-	-	-	-	-	18,058
	Mole	18.8033	4.1351	No	10,968	-	-	-	-	-	-	-	10,968
	Bili	19.9185	4.5413	No	10,234	-	-	-	-	-	-	-	10,234
	Boyabu	18.7699	3.7291	No	9,227	-	-	-	-	-	-	-	9,227
	Mulongwe	29.0395	-4.2374	No	8,552	-	-	-	-	-	-	-	8,552
	Nzakara	21.2204	4.2746	No	8,647	-	-	-	-	-	-	-	8,647
	Biringi	30.3385	2.8001	No	7,882	25	-	-	-	-	-	-	7,907
	Wenze	18.6355	4.2491	No	6,214	-	-	-	-	-	-	-	6,214
	Sidi	19.8615	5.0049	No	4,323	-	-	-	-	-	-	-	4,323
	Bele	30.1676	3.594	No	3,432	207	-	-	-	-	-	-	3,639
	Mboti	25.821	4.0243	No	630	-	-	-	-	-	-	-	630
	Subtotal		No	520,096	2,483	66	6,081,048	510,447	515	-	-	7,114,655	
Mozambique	Other			No	2,197	21,024	186	740,844	-	-	-	-	764,251
	Maratane Camp	39.25	-15.255	No	2,947	5,802	477	-	-	-	-	-	9,226
	IDP Camp			No	-	-	-	294,941	-	-	-	-	294,941
	Subtotal				5,144	26,826	663	1,035,785	-	-	-	-	1,068,418
South Africa	Unknown			Yes	66,601	84,361	-	-	-	-	-	-	150,962
	Subtotal				66,601	84,361	-	-	-	-	-	-	150,962
Congo	Other			No	36,288	13,807	10,165	26,875	-	-	-	-	87,135
	Site du 15 Avril	18.5071	3.0597	No	5,829	429	138	-	-	-	-	-	6,396
	Site de Bouemba	16.1265	-2.1593	No	-	4,799	-	-	-	-	-	-	4,799
	Subtotal				42,117	19,035	10,309	26,875	-	-	-	-	98,336
Zambia	Meheba	25.8816	-12.4975	No	27,910	186	9,633	-	-	-	-	-	37,729
	Mayukwayukwa	24.1911	-14.549	No	15,613	16	6,802	-	-	-	-	-	22,431
	Other			No	14,045	2,370	768	-	-	-	-	-	17,183
	Mantapala	28.8876	-9.5082	No	6,992	180	-	-	-	-	-	-	7,172
	Subtotal				64,560	2,752	17,203	-	-	-	-	-	84,515
Angola	Unknown			Yes	17,385	30,023	141	-	-	-	-	-	47,549
	Lovua Settlement	20.0467	-7.4085	No	6,506	-	-	-	-	-	-	-	6,506
	Other			No	1,702	256	61	-	-	-	-	-	2,019
	Subtotal				25,593	30,279	202	-	-	-	-	-	56,074
Malawi	Dzaleka	33.8721	-13.6608	No	34,762	15,850	3	-	-	-	-	-	50,615
	Subtotal				34,762	15,850	3	-	-	-	-	-	50,615
Zimbabwe	Other			No	9,530	5,235	852	-	-	-	-	-	15,617
	Tongogara	32.3082	-20.3469	No	-	6,546	-	-	-	-	-	-	6,546
	Unknown			Yes	789	19	93	-	-	-	-	-	901
	Subtotal				10,319	11,800	945	-	-	-	-	-	23,064
Namibia	Osire	17.365	-21.07	No	4,225	2,006	39	-	-	-	-	-	6,270
	Other			No	600	343	36	-	-	-	-	-	979
	Subtotal				4,825	2,349	75	-	-	-	-	-	7,249
Eswatini	Other			No	1,178	1,236	15	-	-	-	-	-	2,429
	Subtotal				1,178	1,236	15	-	-	-	-	-	2,429
Botswana	Dukwe	26.4975	-20.5822	No	544	8	27	-	-	-	-	-	579
	Other			No	209	93	47	-	-	-	-	-	349
	Subtotal				753	101	74	-	-	-	-	-	928
Lesotho	Other			No	294	304	6	-	-	-	-	-	604
	Subtotal				294	304	6	-	-	-	-	-	604
Madagascar	Other			No	62	224	16	-	-	-	-	-	302
	Subtotal				62	224	16	-	-	-	-	-	302
Comoros	Other			No	12	93	-	-	-	-	-	-	105
	Subtotal				12	93	-	-	-	-	-	-	105
Mauritius	Other			No	4	9	-	-	-	-	-	-	13
	Subtotal				4	9	-	-	-	-	-	-	13
					776,320	197,702	29,577	7,143,708	510,447	515	-	-	8,658,266

Notes: *The number of IDPs in DRC is as of 31 March 2023 and IDPs by disaster are not included; **'Other' in the location refers to any known location other than camp or settlement sites, covering both urban and rural areas; ***self-settled refers to the individuals without available information such as their names and locations, and their locations are categorised to be 'unknown'; those by location in Congo, Democratic Republic of the Congo and Zimbabwe could be different from the numbers operation report due to inconsistency in proGres v4.

Surveys and assessments in the region

Effective monitoring of surveys and assessments remains a critical challenge in the region. One of the key related concerns is the duplication in data collection, leading to expensive costs. This issue requires the reinforcement of data governance.

Furthermore, the bureau is working with stakeholders to reinforce existing multi-functional teams (MFTs) at country level to lead data collection and ensure data accuracy and consistency. In addition, the Bureau is envisioning the establishment of a regional data quality standard to identify and manage data risks and define data ownership and accountability. The expected results will enable the achievement of reliable data.

Population Data Analysis

Regional Bureau for Southern Africa

April 2023



United Nations High Commissioner for Refugees

UNHCR, Regional Bureau of Southern Africa

Cover Photo: © UNHCR/Guillaume Chirinda

Contact

UNHCR RBSA DIMA, rsarb@unhcr.org;

LINKS: [UNHCR RBSA data portal](#) – [Facebook](#) – [Twitter](#) – [Instagram](#)