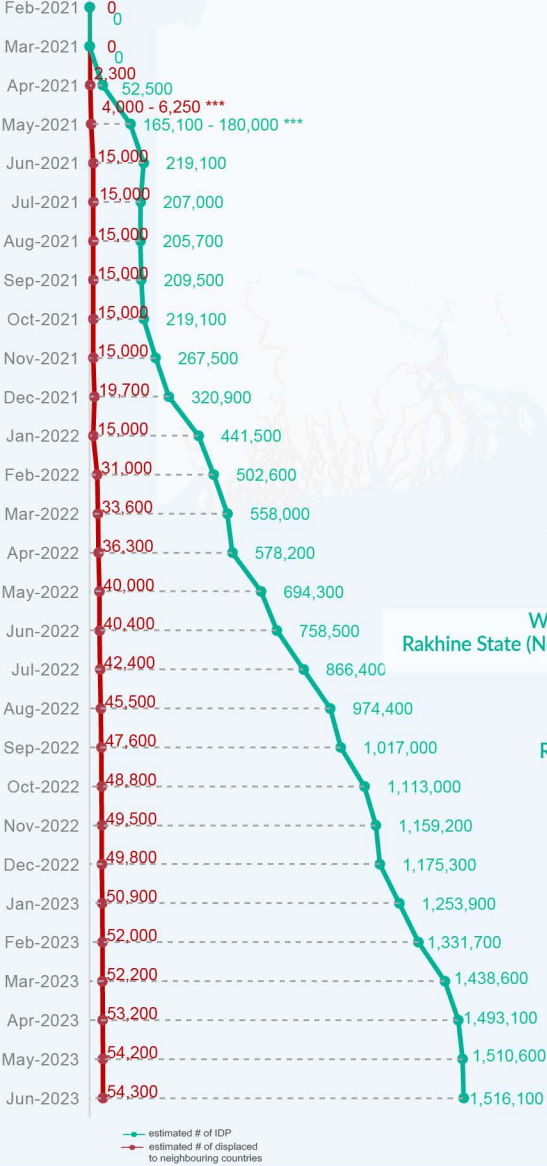


Key figures

Estimated # of IDPs → 1,516,100
 Estimated # of displaced to neighbouring countries → 54,300

Source : UN in Myanmar

Estimated displacement figures by Month



*61,300 persons are displaced by armed conflict in neighbouring Kayah State while 6,900 persons are displaced by inter-EAO conflict between SSPP and RCSS.

**UN Estimates

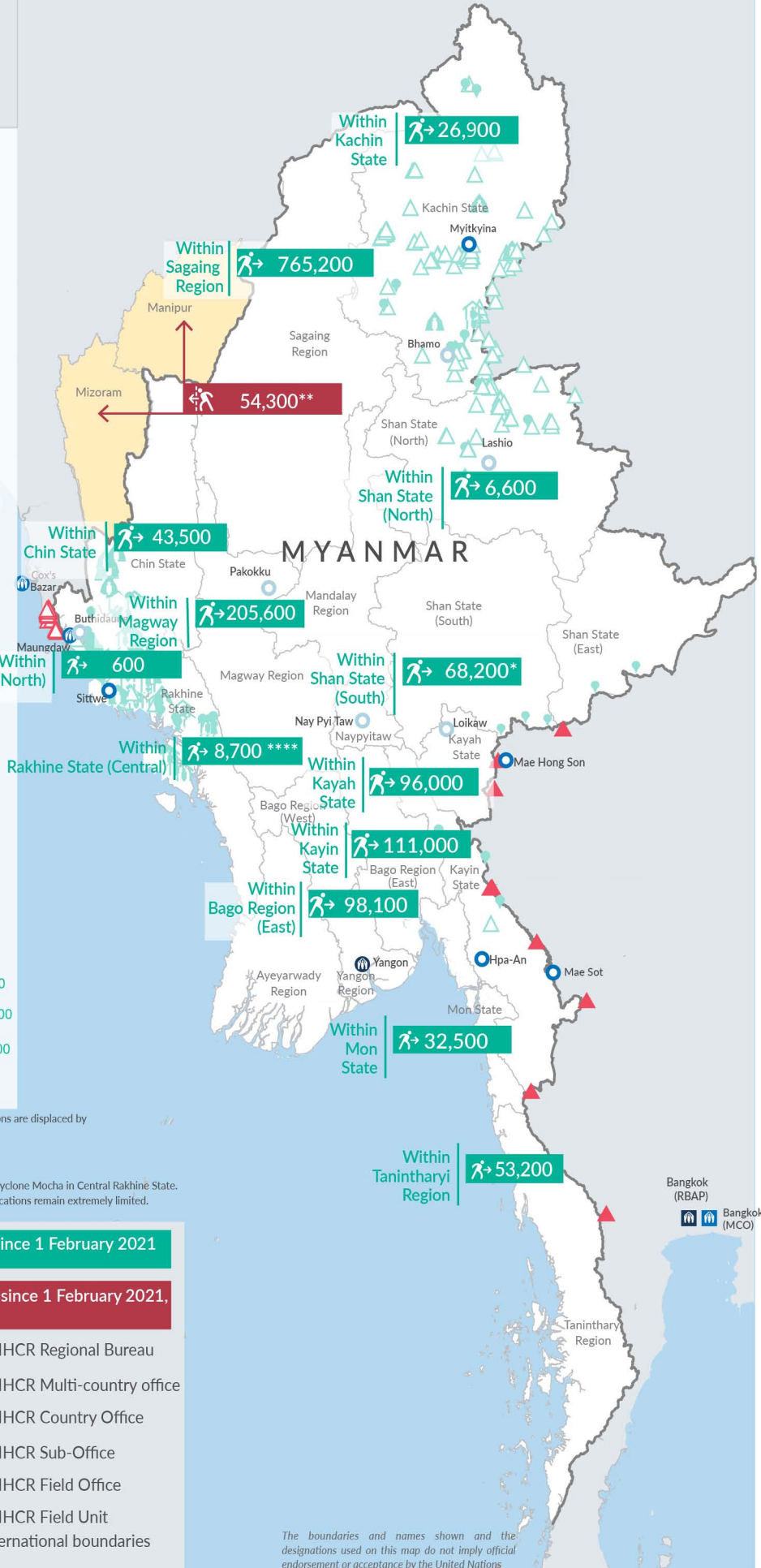
*** Range of figures was used while data collection was in progress.

**** Regular data collection for the reporting period is disrupted by the immediate impacts of Cyclone Mocha in Central Rakhine State. Partners are assessing the displacement situation following the cyclone, however telecommunications remain extremely limited. Figures will be updated once regular data collection activities resume.

Estimated internal displacement within Myanmar since 1 February 2021
(rounded to the nearest hundred)

Estimated displacement to neighbouring countries since 1 February 2021, who remain displaced
(rounded to the nearest hundred)

IDP unplanned settlement (pre-1 Feb 2021)	UNHCR Regional Bureau
IDP Center (pre-1 Feb 2021)	UNHCR Multi-country office
IDP spontaneous location (pre-1 Feb 2021)	UNHCR Country Office
IDP planned settlement (pre-1 Feb 2021)	UNHCR Sub-Office
Temporary shelter for displaced people from Myanmar	UNHCR Field Office
Refugee, planned settlement	UNHCR Field Unit
States/Provinces with new arrivals	International boundaries



The boundaries and names shown and the designations used on this map do not imply official endorsement or acceptance by the United Nations

Key figures


1,844,100

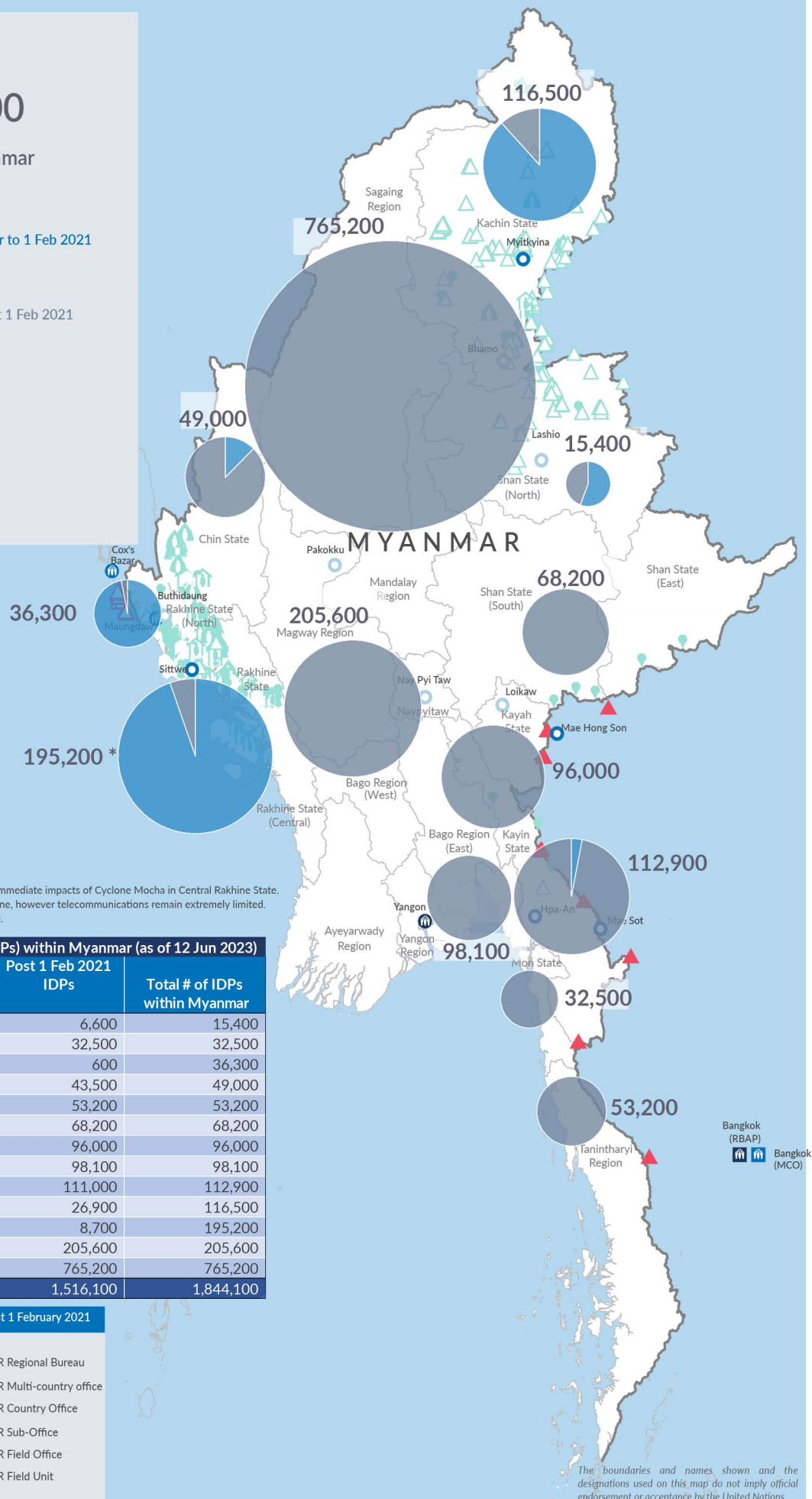
Estimated total IDPs within Myanmar


328,000
 Estimated # of IDPs displaced prior to 1 Feb 2021
 (As of 31 Dec, 2022)


1,516,100
 Estimated # of IDPs displaced post 1 Feb 2021
 (As of 12 Jun, 2023)


 Prior to 1 Feb 2021
 Post 1 Feb 2021

Source : UN in Myanmar



*Regular data collection for the reporting period is disrupted by the immediate impacts of Cyclone Mocha in Central Rakhine State. Partners are assessing the displacement situation following the cyclone, however telecommunications remain extremely limited. Figures will be updated once regular data collection activities resume.

State/Region	Prior to 1 Feb 2021 IDPs	Post 1 Feb 2021 IDPs	Total # of IDPs within Myanmar
Shan State (North)	8,800	6,600	15,400
Mon State	-	32,500	32,500
Rakhine State (North)	35,700	600	36,300
Chin State	5,500	43,500	49,000
Tanintharyi Region	-	53,200	53,200
Shan State (South)	-	68,200	68,200
Kayah State	-	96,000	96,000
Bago Region (East)	-	98,100	98,100
Kayin State	1,900	111,000	112,900
Kachin State	89,600	26,900	116,500
Rakhine State (Central) *	186,500	8,700	195,200 *
Magway Region	-	205,600	205,600
Sagaing Region	-	765,200	765,200
Grand Total	328,000	1,516,100	1,844,100

 Estimated internal displacement within Myanmar Pre+Post 1 February 2021 (rounded to the nearest hundred)

-  IDP unplanned settlement (pre-1 Feb 2021)
-  IDP Center (pre-1 Feb 2021)
-  IDP spontaneous location (pre-1 Feb 2021)
-  IDP planned settlement (pre-1 Feb 2021)
-  Temporary shelter for displaced people from Myanmar
-  Refugee, planned settlement
-  International boundaries
-  UNHCR Regional Bureau
-  UNHCR Multi-country office
-  UNHCR Country Office
-  UNHCR Sub-Office
-  UNHCR Field Office
-  UNHCR Field Unit

The boundaries and names shown on this map do not imply official endorsement or acceptance by the United Nations