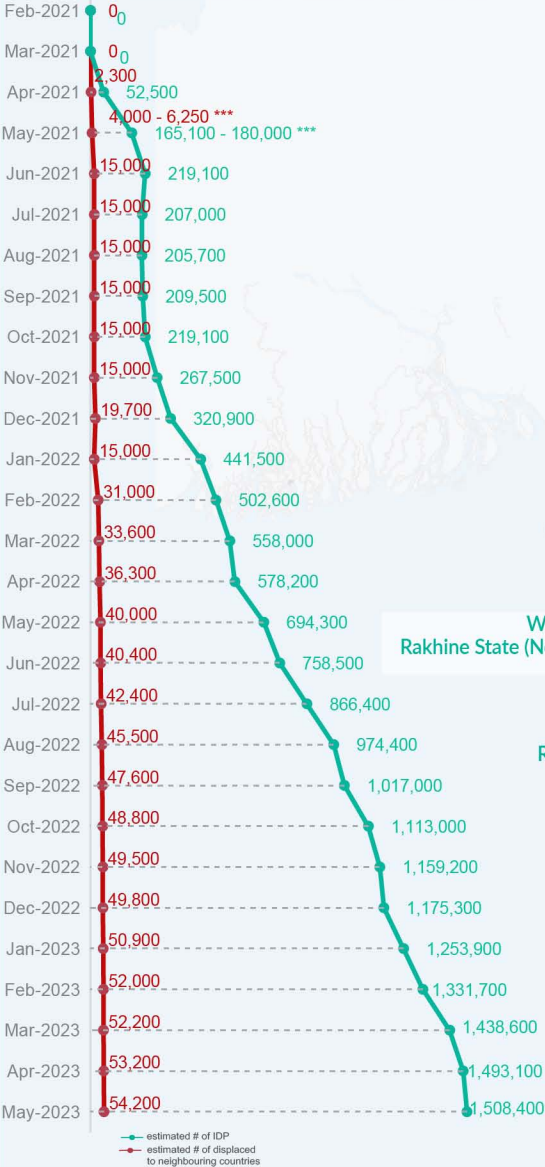


Key figures

Estimated # of IDPs → 1,508,400
 Estimated # of displaced to neighbouring countries → 54,200

Source : UN in Myanmar

Estimated displacement figures by Month



*60,100 persons are displaced by armed conflict in neighbouring Kayah State while 6,900 persons are displaced by inter-EAO conflict between SSPP and RCSS.

**UN Estimates

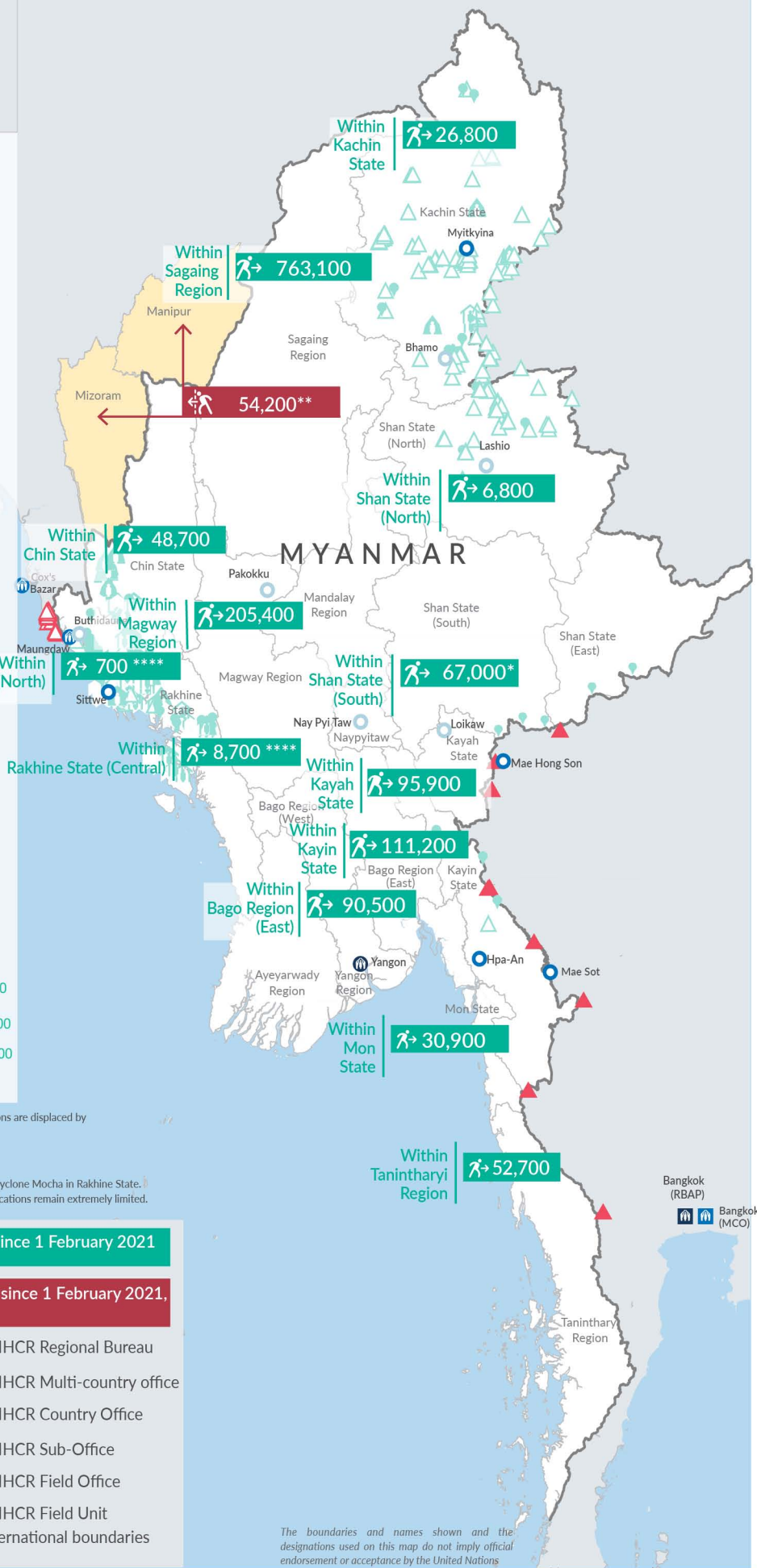
*** Range of figures was used while data collection was in progress.

**** Regular data collection for the reporting period is disrupted by the immediate impacts of Cyclone Mocha in Rakhine State. Partners are assessing the displacement situation following the cyclone, however telecommunications remain extremely limited. Figures will be updated once regular data collection activities resume.

Estimated internal displacement within Myanmar since 1 February 2021
(rounded to the nearest hundred)

Estimated displacement to neighbouring countries since 1 February 2021, who remain displaced
(rounded to the nearest hundred)

IDP unplanned settlement (pre-1 Feb 2021)	UNHCR Regional Bureau
IDP Center (pre-1 Feb 2021)	UNHCR Multi-country office
IDP spontaneous location (pre-1 Feb 2021)	UNHCR Country Office
IDP planned settlement (pre-1 Feb 2021)	UNHCR Sub-Office
Temporary shelter for displaced people from Myanmar	UNHCR Field Office
Refugee, planned settlement	UNHCR Field Unit
States/Provinces with new arrivals	International boundaries



The boundaries and names shown and the designations used on this map do not imply official endorsement or acceptance by the United Nations

Key figures


1,836,400

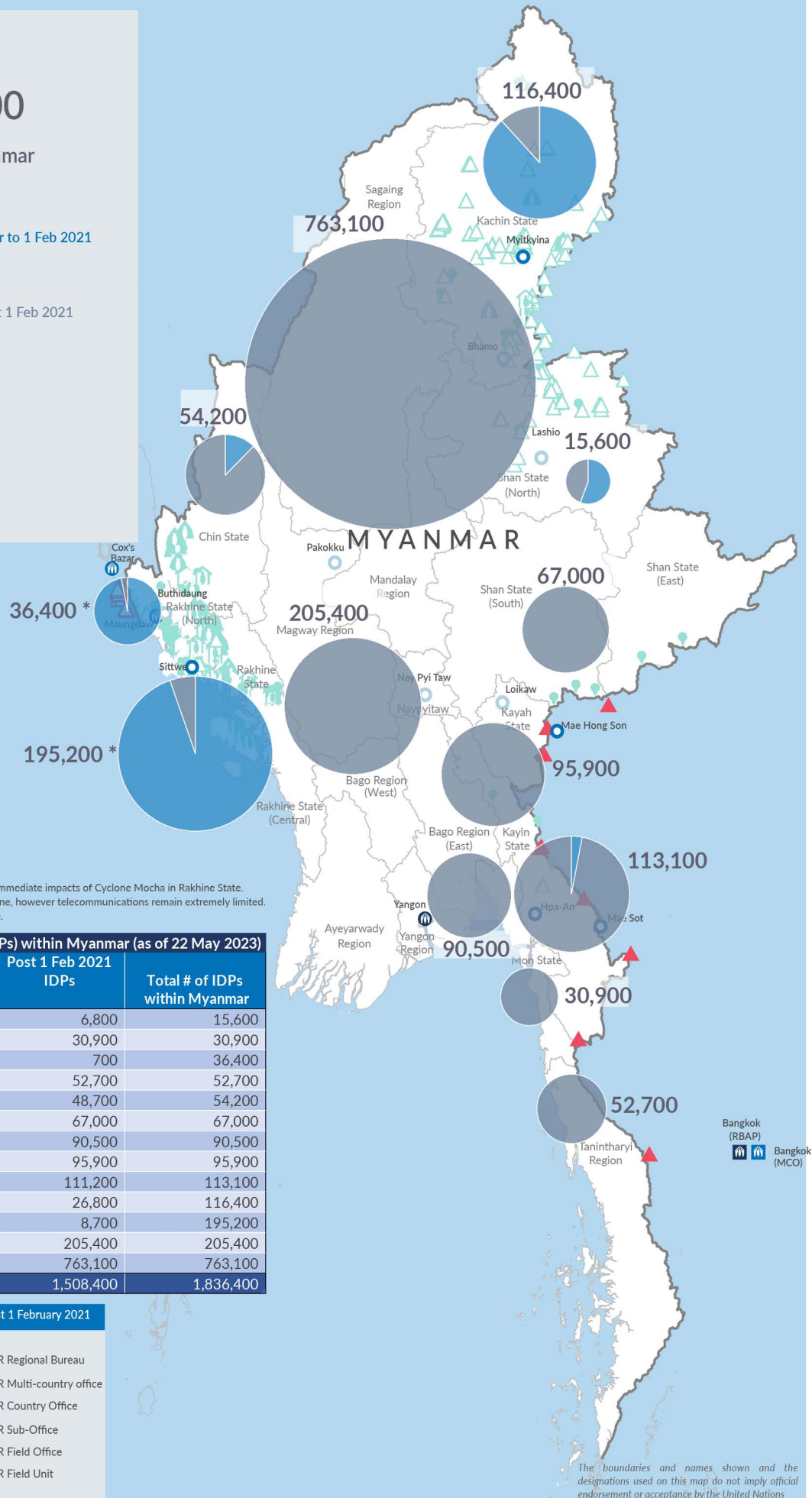
Estimated total IDPs within Myanmar


328,000
 Estimated # of IDPs displaced prior to 1 Feb 2021
 (As of 31 Dec, 2022)


1,508,400
 Estimated # of IDPs displaced post 1 Feb 2021
 (As of 22 May, 2023)

 Prior to 1 Feb 2021
 Post 1 Feb 2021


Source : UN in Myanmar



*Regular data collection for the reporting period is disrupted by the immediate impacts of Cyclone Mocha in Rakhine State. Partners are assessing the displacement situation following the cyclone, however telecommunications remain extremely limited. Figures will be updated once regular data collection activities resume.

Estimated total internally displaced person (IDPs) within Myanmar (as of 22 May 2023)

State/Region	Prior to 1 Feb 2021 IDPs	Post 1 Feb 2021 IDPs	Total # of IDPs within Myanmar
Shan State (North)	8,800	6,800	15,600
Mon State	-	30,900	30,900
Rakhine State (North)	35,700	700	36,400
Tanintharyi Region	-	52,700	52,700
Chin State	5,500	48,700	54,200
Shan State (South)	-	67,000	67,000
Bago Region (East)	-	90,500	90,500
Kayah State	-	95,900	95,900
Kayin State	1,900	111,200	113,100
Kachin State	89,600	26,800	116,400
Rakhine State (Central)	186,500	8,700	195,200
Magway Region	-	205,400	205,400
Sagaing Region	-	763,100	763,100
Grand Total	328,000	1,508,400	1,836,400


Estimated internal displacement within Myanmar Pre+Post 1 February 2021
 (rounded to the nearest hundred)

-  IDP unplanned settlement (pre-1 Feb 2021)
-  IDP Center (pre-1 Feb 2021)
-  IDP spontaneous location (pre-1 Feb 2021)
-  IDP planned settlement (pre-1 Feb 2021)
-  Temporary shelter for displaced people from Myanmar
-  Refugee, planned settlement
-  International boundaries
-  UNHCR Regional Bureau
-  UNHCR Multi-country office
-  UNHCR Country Office
-  UNHCR Sub-Office
-  UNHCR Field Office
-  UNHCR Field Unit

The boundaries and names shown on this map do not imply official endorsement or acceptance by the United Nations