

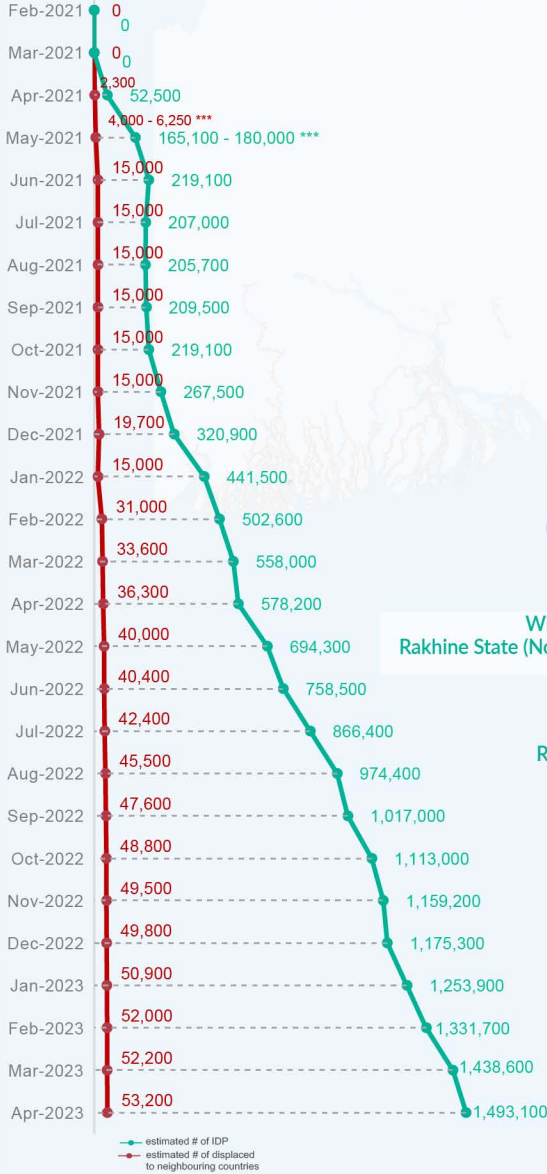
Key figures

Estimated # of IDPs → 1,493,100

Estimated # of displaced to neighbouring countries → 53,200

Source : UN in Myanmar

Estimated displacement figures by Month

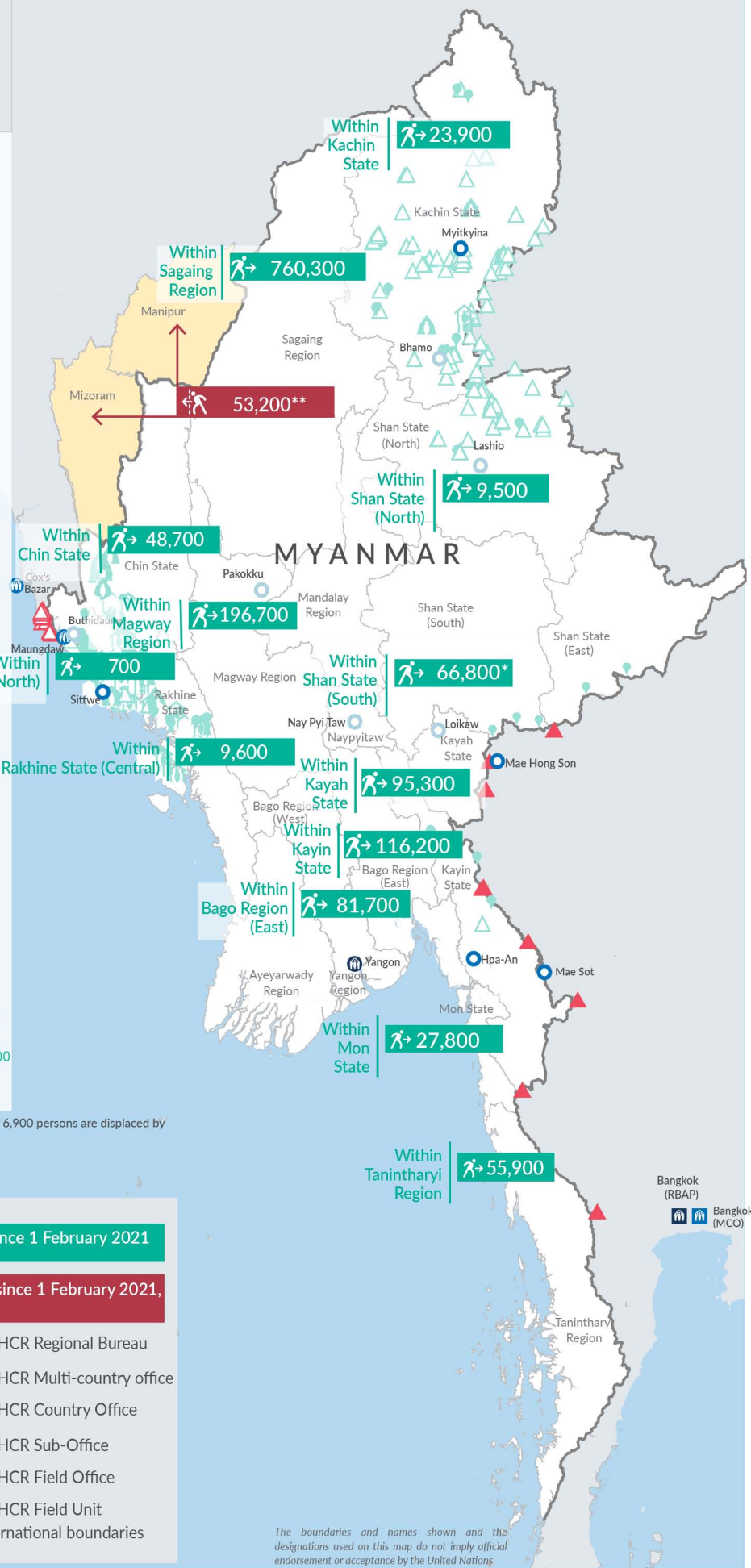


*59,900 persons are displaced by armed conflict in neighbouring Kayah State while 6,900 persons are displaced by inter-EAO conflict between SSPP and RCSS
 **UN Estimates
 ***Range of figures was used while data collection was in progress

Estimated internal displacement within Myanmar since 1 February 2021 (rounded to the nearest hundred)

Estimated displacement to neighbouring countries since 1 February 2021, who remain displaced (rounded to the nearest hundred)

- IDP unplanned settlement (pre-1 Feb 2021)
- IDP Center (pre-1 Feb 2021)
- IDP spontaneous location (pre-1 Feb 2021)
- IDP planned settlement (pre-1 Feb 2021)
- Temporary shelter for displaced people from Myanmar
- Refugee, planned settlement
- States/Provinces with new arrivals
- UNHCR Regional Bureau
- UNHCR Multi-country office
- UNHCR Country Office
- UNHCR Sub-Office
- UNHCR Field Office
- UNHCR Field Unit
- International boundaries



The boundaries and names shown and the designations used on this map do not imply official endorsement or acceptance by the United Nations

Key figures


1,821,100

Estimated total IDPs within Myanmar

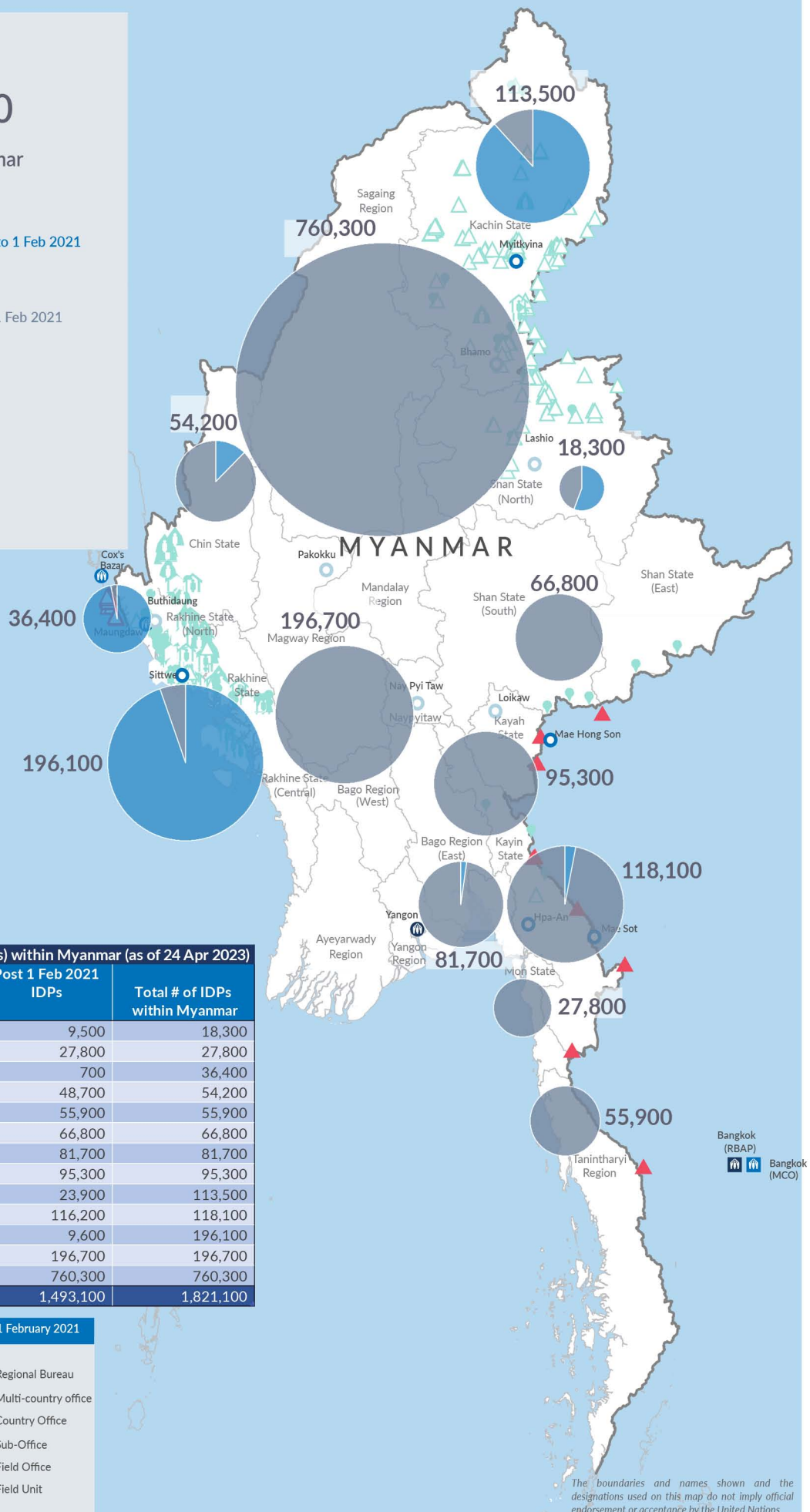

328,000
 Estimated # of IDPs displaced prior to 1 Feb 2021
 (As of 31 Dec, 2022)


1,493,100
 Estimated # of IDPs displaced post 1 Feb 2021
 (As of 24 Apr, 2023)



 Prior to 1 Feb 2021


 Post 1 Feb 2021

Source : UN in Myanmar


Estimated total internally displaced person (IDPs) within Myanmar (as of 24 Apr 2023)

State/Region	Prior to 1 Feb 2021 IDPs	Post 1 Feb 2021 IDPs	Total # of IDPs within Myanmar
Shan State (North)	8,800	9,500	18,300
Mon State	-	27,800	27,800
Rakhine State (North)	35,700	700	36,400
Chin State	5,500	48,700	54,200
Tanintharyi Region	-	55,900	55,900
Shan State (South)	-	66,800	66,800
Bago Region (East)	-	81,700	81,700
Kayah State	-	95,300	95,300
Kachin State	89,600	23,900	113,500
Kayin State	1,900	116,200	118,100
Rakhine State (Central)	186,500	9,600	196,100
Magway Region	-	196,700	196,700
Sagaing Region	-	760,300	760,300
Grand Total	328,000	1,493,100	1,821,100


Estimated internal displacement within Myanmar Pre+Post 1 February 2021
 (rounded to the nearest hundred)

-  IDP unplanned settlement (pre-1 Feb 2021)
-  IDP Center (pre-1 Feb 2021)
-  IDP spontaneous location (pre-1 Feb 2021)
-  IDP planned settlement (pre-1 Feb 2021)
-  Temporary shelter for displaced people from Myanmar
-  Refugee, planned settlement
-  International boundaries
-  UNHCR Regional Bureau
-  UNHCR Multi-country office
-  UNHCR Country Office
-  UNHCR Sub-Office
-  UNHCR Field Office
-  UNHCR Field Unit

The boundaries and names shown and the designations used on this map do not imply official endorsement or acceptance by the United Nations