

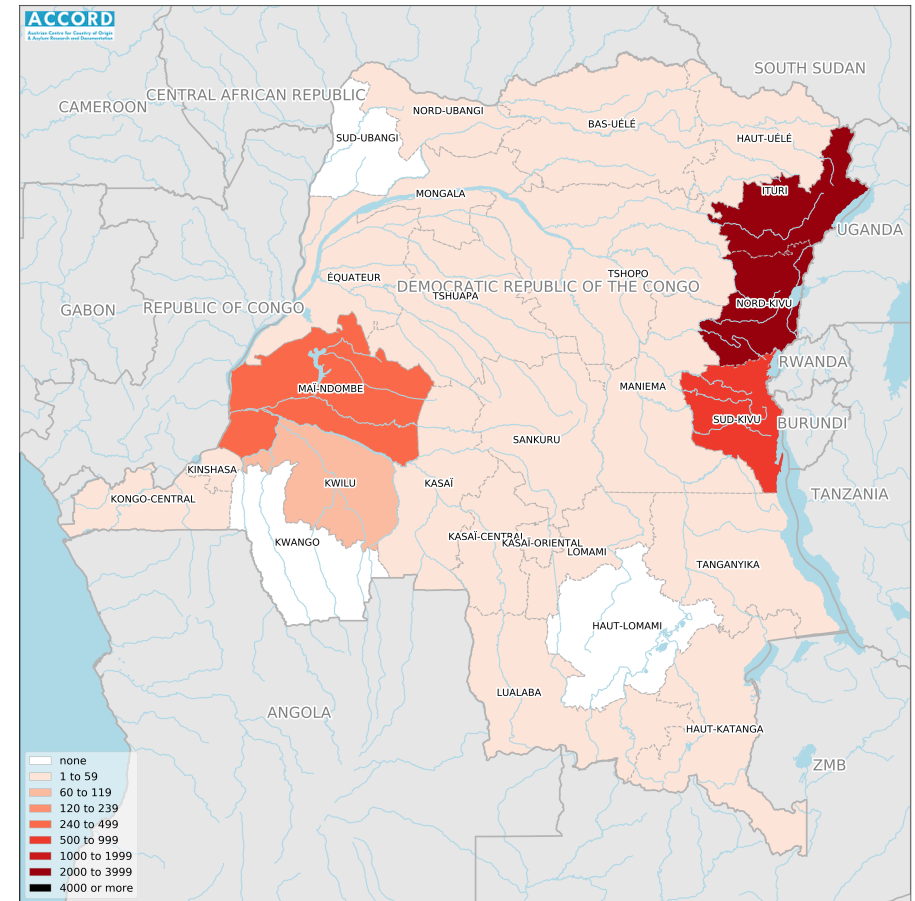
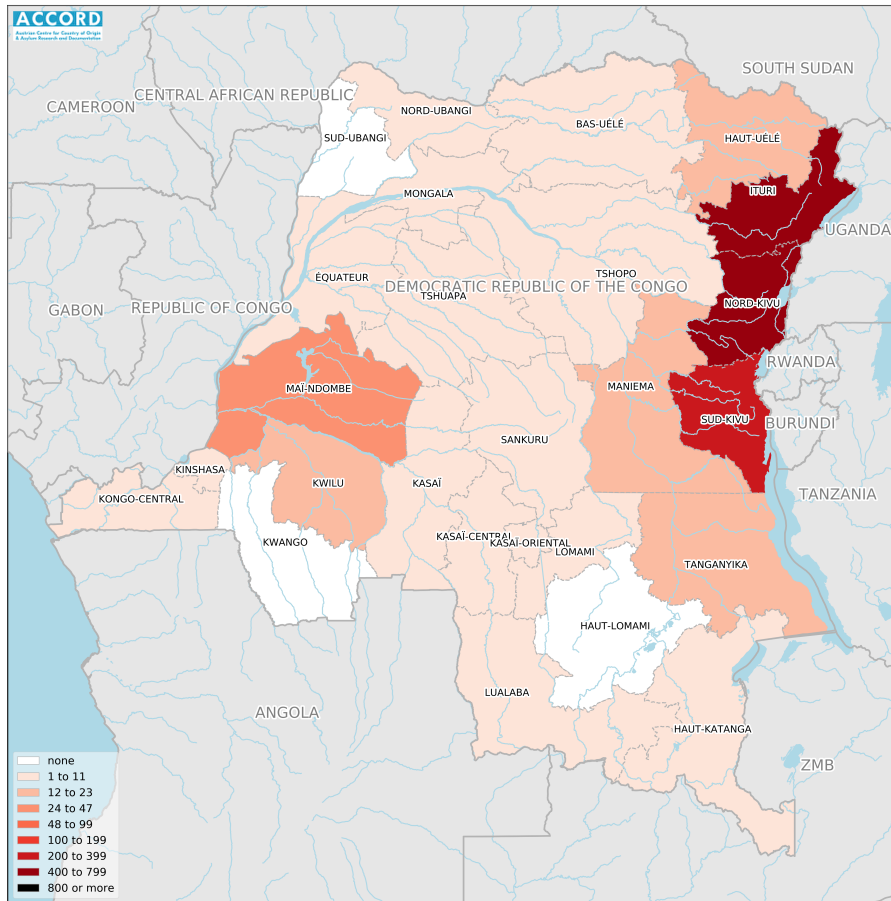
DEMOCRATIC REPUBLIC OF CONGO, YEAR 2022:

Update on incidents according to the Armed Conflict Location & Event Data Project (ACLED)

compiled by ACCORD, 12 April 2023

Number of reported incidents with at least one fatality

Number of reported fatalities



National borders: [GADM, 6 May 2018b](#); administrative divisions: [GADM, 6 May 2018a](#); incident data: [ACLED, 10 March 2023](#); coastlines and inland waters: [Smith and Wessel, 1 May 2015](#)

Contents

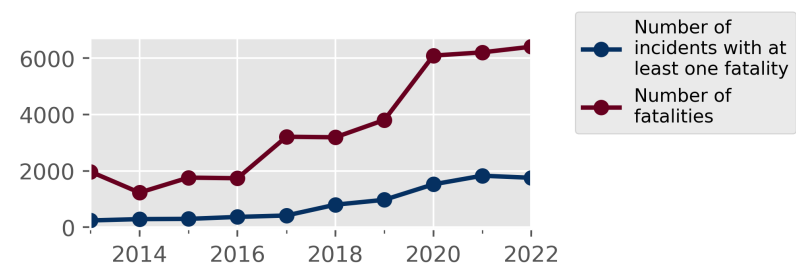
Number of reported fatalities	1
Number of reported incidents with at least one fatality	1
Conflict incidents by category	2
Development of conflict incidents from 2013 to 2022	2
Methodology	3
Conflict incidents per province	4
Localization of conflict incidents	4
Disclaimer	9

Conflict incidents by category

Category	Number of incidents	Number of incidents with at least one fatality	Number of fatalities
Violence against civilians	1402	952	3073
Battles	1337	601	2995
Strategic developments	553	4	8
Riots	359	166	245
Protests	319	5	6
Explosions / Remote violence	84	27	77
Total	4054	1755	6404

This table is based on data from ACLED (datasets used: [ACLED, 10 March 2023](#)).

Development of conflict incidents from 2013 to 2022



This graph is based on data from ACLED (datasets used: [ACLED, 10 March 2023](#)).

Methodology

The data used in this report was collected by the Armed Conflict Location & Event Data Project (ACLED). ACLED collects data on reported conflict events in selected African and Asian countries, Democratic Republic of Congo being among them. ACLED researchers collect event data from a variety of sources and code them by date, location, agent, and event type.

Most of the data collected by ACLED is gathered based on publicly available, secondary reports. It may therefore underestimate the volume of events. Fatality data particularly is vulnerable to bias and inaccurate reporting, and ACLED states to use the most conservative estimate available. ACLED uses the reports' context to estimate fatalities for events with reported fatalities for which the exact number is unknown ("3" or "10" for plural fatalities, depending on the context; "100" if "hundreds" are mentioned, etc.). For further details on ACLED and for the full data, see www.acleddata.com and [Raleigh; Linke; Hegre, and Karlsen, 2010](#).

Based on this data, the Austrian Centre for Country of Origin & Asylum Research and Documentation (ACCORD) compiles updates on conflict incidents and publishes them on ecoi.net to offer another access point to the ACLED datasets.

It is advised to employ extreme caution when using fatality numbers.

Assessments of the security situation should not be based solely on quantitative analysis of event data.

Geographic map data is primarily based on GADM, complemented with other sources if necessary. Incidents are mapped to GADM provinces using the provinces in ACLED data. Province names and borders may differ between ACLED and GADM. Incidents that could not be located are ignored. The numbers included in this overview might therefore differ from the original ACLED data. ACLED uses varying degrees of geographic precision for the individual incidents, depending

on what level of detail is reported. Thus, towns may represent the wider region in which an incident occurred, or the provincial capital may be used if only the province is known. Erroneous location data, especially due to identical place names, cannot be fully excluded.

Incidents comprise the following categories: battles, violence against civilians, remote violence, riots/protests, non-violent strategic activities. For details on these categories, please see

- ACLED – Armed Conflict Location & Event Data Project: Armed Conflict Location and Event Data Project (ACLED) User Quick Guide, April 2019
https://acleddata.com/acleddatanew/wp-content/uploads/2021/11/ACLED_General-User-Guide_April-2019.pdf
- ACLED – Armed Conflict Location & Event Data Project: FAQs: ACLED Fatality Methodology, February 2020
https://acleddata.com/acleddatanew/wp-content/uploads/2021/11/ACLED_FAQs-Fatalities-Methodology_v1_February-2020.pdf
- ACLED – Armed Conflict Location & Event Data Project: Armed Conflict Location and Event Data Project (ACLED) Codebook, January 2021
https://acleddata.com/acleddatanew/wp-content/uploads/2021/11/ACLED_Codebook_v1_January-2021.pdf

Conflict incidents per province

Province	Number of incidents	Number of incidents with fatalities	Number of fatalities
Bas-Uélé	27	7	12
Haut-Katanga	57	9	12
Haut-Lomami	3	0	0
Haut-Uélé	50	14	21
Ituri	1052	617	2664
Kasaï	25	4	7
Kasaï-Central	25	3	4
Kasaï-Oriental	31	5	10
Kinshasa	100	7	20
Kongo-Central	25	5	8
Kwango	6	0	0
Kwilu	47	20	76
Lomami	9	3	4
Lualaba	19	5	9
Maniema	43	15	34
Mai-Ndombe	50	24	315
Mongala	7	1	1
Nord-Kivu	1722	703	2362
Nord-Ubangi	8	3	5
Sankuru	7	4	6

Province	Number of incidents	Number of incidents with fatalities	Number of fatalities
Sud-Kivu	632	281	769
Sud-Ubangi	4	0	0
Tanganyika	66	20	55
Tshopo	32	1	4
Tshuapa	4	1	1
Équateur	3	3	5

Localization of conflict incidents

Note: The following list is an overview of the incident data included in the ACLED dataset. More details are available in the actual dataset (date, location data, event type, involved actors, information sources, etc.). The data's precision varies among the incidents: a town may represent a region, or the provincial capital may be used if the precise location of an incident is unknown. In the following list, the names of event locations are taken from ACLED, while the administrative region names are taken from GADM data which serves as the basis for the maps above.

In **Bas-Uélé**, 27 incidents killing 12 people were reported. The following locations were among the affected: **Adama, Ango, Bakpolo, Banda, Basokpio, Bili, Bokoyo, Bulumasi, Buta, Mbibili, Nongba, Pasi.**

In **Haut-Katanga**, 57 incidents killing 12 people were reported. The following locations were among the affected: **Kambove, Kasumbalesa, Kisele, Likasi, Lubumbashi, Lubumbashi - Kawama, Malambwe, Mitwaba, Mokambo, Pweto, Sakania, Sampwe.**

In **Haut-Lomami**, 3 incidents killing 0 people were reported. The following

locations were among the affected: Kamina, Kaniama Kasese, Kayashingo.

In Haut-Uélé, 50 incidents killing 21 people were reported. The following locations were among the affected: Ataki, Bambangana, Banga, Bangadi, Bangalu, Bayote, Bilikwa, Bitima, Duru, Faradje, Isiro, Kaka, Kana, Makungulu, Masombo, Moku, Mondo-Missa, Nakorda, Nambia, Naparka, Napopo, Niangara, Obeledi, Sambia, Sanangu, Sukune, Tadu, Tomati, Wando, Watsa, Yombio.

In Ituri, 1052 incidents killing 2664 people were reported. The following locations were among the affected: Abara, Abba, Abelkoze, Abombi, Akpe, Ala, Alafu, Alangi, Alato, Alegbesi, Alengbesi, Alima, Alingongo, Alu, Amee, Andasia, Andisa, Andisende, Apakola, Apakolu, Apende, Ariwara, Arr, Aru, Aungba I, Awu, Babeke, Babu, Badui, Bahaha, Bakaeko, Bakonde, Bakwanza, Balabala, Bali, Bamande, Bambu, Banda, Bandiboli, Bandibwame, Bandipete, Bango, Bani, Bassa, Batumbi, Beliba, Bembey, Berunda, Biakato, Biba, Bikima, Blukwa, Bochu, Boga, Bombuo, Bruxelles, Buba, Buchama, Bugo, Bukiringi, Bukoko, Bule, Buley, Bunia, Burasi, Busiyo, Buwa-Nyare, Bwakadi, Bwana-Sura, Bwanga, Cafe, Camp Platon, Chimba, Chini ya kilima, Dada, Dala, Damblo, Dhedja, Dhera, Djailo, Djala, Djalasiga, Djalusene, Djangi, Djatsi, Djauda, Djebe, Djidda, Djudju, Djugu, Djupalokare, Djuru, Dosti, Dra, Drakpa, Drodoro, Dubai, Duma, Dya, Dyambu, Dz klu, Dz na, Dzaika, Dzengi, Epanza, Fataki, Galay, Gali, Gangu, Gbado, Geti, Gina, Goba, Gobu, Godawasi, Gokalu, Golo, Goma, Gu, Guda, Huu, Idohu, Irumu, Itendey, Jee, Jelasiga, Jiba, Jingu, Jisa, Jitso, Jiwi, Jupabaliko, Jupacer, Jupakamu, Jupaketa, Jupalango, Jupalungu, Kabrique, Kabwanika, Kadilo, Kafe, Kaladawo, Kalanda, Kalo, Kamatso, Kambe, Kana, Kandigba, Kandoi, Kapalay, Karga, Kasoko, Katabey, Katanga, Katoto, Kaya, Kayera, Kazaroho, Keneomba, Kepira, Kilo, Kilo Mission, Kinyanjojo, Kiza, Kobu, Koki, Kokonyange, Komanda, Kombokabo, Kosovo, Kota, Kotonni, Kpandroma, Kpatiz, Kpawi, Kpengbele, Kudjangumi, Kyabohe, Kyabwohe, Kyamata, Kyangele, Lamuka, Landjo, Langbe, Largu, Laudjo, Leku, Lenga, Lengabo,

Libreville, Lidda, Lidinga, Likpi, Linga, Lisey, Litho, Lobho, Loda, Lodjina, Lodjo, Loga, Lokpa, Lologa, Lolwa, Lopa, Lor, Lorobi, Luengba, Lugo, Lukamalembe, Lukaya, Lulijo, Lumalisa, Luna, Mabanga, Mabasoli-Basiga, Mabilindey, Machongani, Madombo, Mahagi, Mahu, Maimunde, Makayanga, Makeke, Makofi, Makumo, Malabo, Malanga, Malaya, Malibongo, Malu, Maluka, Mambaka, Mambasa, Mambelenga, Mambesu, Mambisa, Mandibe, Mandje, Mandro, Mangala, Mangusu, Manyama, Manzebi, Manzobe, Marabo, Masome, Masumbuko, Mateka, Matete, Matete-Monaco, Matoro, Mawa, Mayi Safi, Mayolo, Maze, Mbau, Mbia, Mbidjo, Mbijo, Mbr'bu, Mbudjo, Mbutchu, Miala, Mingazi, Mitego, Mitume, Mokambo, Mongbwalu, Monge, Mont Hoyo, Mudzipela, Muhito, Mukasila, Mulinga, Mungamba, Murubya, Musaba, Mutweyi, Muvaramu, Mwanga, Nd'rili, Ndalo, Ndalya, Ndalya-Depot, Ndefu, Ndenge, Nderembi, Nderi, Ndimalo, Ndimu, Ndjala, Ndjangi, Ndjaza, Ndungbe, Ngazba, Ngelengele, Ngiri, Ngokoni, Ngongo, Ngotutsi, Ngr'ikpa, Ngubo, Nia-Nia, Nioka, Nizi, Njiapanda, Nongo, Nyakabale, Nyakasanza, Nyaleka, Nyamamba, Nyamussasi, Nyangaray, Nyankunde, Nyara, Nyatsi, Nzalo, Nzani, Nzanzibar, Nzebi, Nzere 1, Nzere 2, Ofaye Otto Maber, Otomabere, Pakenge, Pakulu, Pamithu, Pamone, Panduru, Panza, Pay, Pele, Penge, Penyi, Petsi, Piko, Pilipili, Pimbo, Plaine Savo, Pluto, Pluton, Ragba, Rhoo, Risasi, Riza, Rkpa, Roe, Rubingo, Rukwanzi Island, Rumu, Rwampara, Saba, Sabahido, Saio, Samboko Centre, Saupka, Sayo, Semliki, Sesa, Shaba, Shari, Shatchu, Shauri Moya, Sililo, Soba, Soki, Sokotano, Some, Sondu, Songolo, Sukisa, Sumbi, Sumbu, Tali-Tali, Talitali, Talolo, Tche, Tcheki, Tchomia, Tchudja, Tchungu, Tchutchu, Terawa, Teturi, Thesa, Tinda, Tolitoli, Tolytoly, Tondoli, Tsa, Tsena, Tshabi, Tsibu, Tsitsi, Tsooro, Tsotso, Tsuba, Tsunde, Tsunga, Ukareba, Uke, Ukpa, Ulo, Usigo, Uzi, Vido II, Vukutu, Wadda, Wala, Wasa Wago Forest, Wele, Wifi, Wiluu, Yagu, Yalala, Yedi, Yilo, Yina, Zali, Zanzibar, Zekere, Zibiti, Zolo, Zunguluka.

In Kasai, 25 incidents killing 7 people were reported. The following locations were among the affected: Ilebo, Kamako, Kilendjale, Mapangu, Mweka, Tshikapa, Tumba-Sumbula.

In **Kasai-Central**, 25 incidents killing 4 people were reported. The following locations were among the affected: **Demba, Dibaya, Dimbelenge, Kalemba Mbuji, Kananga, Luiza, Ntenda, Tshikula, Tshimbulu.**

In **Kasai-Oriental**, 31 incidents killing 10 people were reported. The following locations were among the affected: **Bakwa-Masela, Bashingala, Dilunga, Kabeya-Kamwanga, Katanda, Lubilanji, Mbuji-Mayi, Miabi, Tshilenge.**

In **Kinshasa**, 100 incidents killing 20 people were reported. The following locations were among the affected: **Kinshasa, Kinshasa - Barumbu, Kinshasa - Binza Delvaux, Kinshasa - Camp Kokolo, Kinshasa - Djelo Binza, Kinshasa - Gombe, Kinshasa - Kasa-Vubu, Kinshasa - Kimbanseke, Kinshasa - Kintambo, Kinshasa - Kisenso, Kinshasa - Limete, Kinshasa - Lingwala, Kinshasa - Maluku, Kinshasa - Masina, Kinshasa - Matadi Kibala, Kinshasa - Matete, Kinshasa - Ndjili Airport, Kinshasa - Ngaba, Kinshasa - Ngaliema, Menkao.**

In **Kongo-Central**, 25 incidents killing 8 people were reported. The following locations were among the affected: **Boma, Kasangulu, Kinzau Vuete, Kisantu, Lukala, Lukula, Luozi, Matadi, Mbanza Ngungu, Moanda, Moenge, Zulu-Mongo.**

In **Kwango**, 6 incidents killing 0 people were reported. The following locations were among the affected: **Kasongo Lunda, Kenge, Mongata.**

In **Kwilu**, 47 incidents killing 76 people were reported. The following locations were among the affected: **Bagata, Bandundu, Bulungu, Fatundu, Gungu, Idiofa, Kakobola, Kikwit, Kimpana.**

In **Lomami**, 9 incidents killing 4 people were reported. The following locations were among the affected: **Kabinda, Mpunga, Mwene-Ditu.**

In **Lualaba**, 19 incidents killing 9 people were reported. The following locations

were among the affected: **Fungurume, Kolwezi, Kolwezi - Manika, Lualaba, Lulu, Sandoa, Tenke.**

In **Maniema**, 43 incidents killing 34 people were reported. The following locations were among the affected: **Crispin, Kabambare, Kalima, Kalonda-Kibuyu, Kama, Kasongo, Kilalawulu, Kindu, Lukolo, Lusangi, Lwama, Mabamba, Maviyakuku, Mutupeke, N Solo, Punia, Salamabila.**

In **Mai-Ndombe**, 50 incidents killing 315 people were reported. The following locations were among the affected: **Binbonga, Bishala, Bokala, Bolobo, Camp Banku, Dumu, Fadiaka, Gambomi, Inongo, Kinsele, Kwamouth, Lekana, Masiambio, Mbomo, Mibe, Mokele, Mosiamo, Nioki.**

In **Mongala**, 7 incidents killing 1 person were reported. The following locations were among the affected: **Bongandanga, Bumba, Lisala.**

In **Nord-Kivu**, 1722 incidents killing 2362 people were reported. The following locations were among the affected: **Aloya, Ancien Beni, Apyeutu, Bambu, Bambuba Kisiki, Bango, Bashu, Baswagha, Benengule, Beni, Bese, Biambe, Bihambwe, Biiri, Bikara, Bilimani, Biruma, Birundule, Bishusha, Bitonga, Boikene, Buabo, Bugamba, Bugina, Bugusa, Buhene, Buhimba, Buhumba, Buhuri II, Bukima, Bukohwa, Bukombo, Bukucha, Bukumbirwa, Bukununu, Bulambo, Bulemba, Buleusa, Bulongo, Bulwa, Bunagana, Buniole, Bunyuka, Burai, Buramba, Burambo, Burora, Burungu, Busanza, Busekere, Buseregenya, Busesa, Bushalingwa, Bushandaba, Bushenge, Busokoli, Butaka, Butaro, Butembo, Butembo - Bulengera, Butembo - Congo ya Sika, Butembo - Furu, Butembo - Kangote, Butembo - Matembe, Butembo - Mukalangirwa, Butembo - Ngere, Butembo - Rughenda, Butembo - Wayene, Butsiro, Butuhe, Buvira, Buzeha, Bwalanda, Bwerere, Bweru, Bweza, Bwisegha, Bwiza, Cantine, Charingwangwa, Chengerero, Chumirwa, Egombo, Eringeti, Faringa, Fatua, Fuko I, Fungula, Gakoro, Gasiza, Gigoro, Gikeri, Gisiza, Goma, Goma - Himbi, Goma - Kasika, Goma - Katindo, Goma -**

Katoyi, Goma - Keshero, Goma - Lac Vert, Goma - Majengo, Goma - Mapendo, Goma - Mugunga, Goma - Ndosho, Goma - Virunga, Goma Airport, Halungupa, Harama, Himbi, Hululu, Hutwe, Ibuga, Inkokwe, Irameso, Irango, Isale, Ishasha, Isonga, JTN, Jomba, Kabalwa, Kabanda, Kabasanza, Kabase, Kabasengo, Kabasha, Kabati, Kabaya, Kabindi, Kabizo, Kabonero, Kabuhendo, Kadobogo, Kafumbizo, Kaheku, Kahondo, Kahumba, Kahunga, Kainama, Kainama II & III, Kakindo, Kakingo, Kakirakira, Kako, Kakola, Kakomero, Kalambairo, Kalembo, Kalemia, Kalengera, Kalindi, Kalinga, Kalivuli, Kalonge, Kalungu, Kamande, Kamango, Kamatembe, Kambau, Kambi Ya Yua, Kamudoka, Kamungu, Kanii, Kanombe, Kanune, Kanyabayonga, Kanyabusoro, Kanyamahoro, Kanyesheja, Kanyeshongo, Kanyihunga Mambira, Kanyonyori, Kanzanza, Karambi, Karenga, Karunda, Karuruma, Kasaka, Kasake, Kasara, Kaseke, Kashalira, Kashasha, Kashishure, Kashuga, Kasiki, Kasindi, Kasinga, Kasitu, Kasoko, Kasopo, Kasugho, Katale, Katiri, Katoyi, Katsiru, Katuhunda, Katungu, Katuunda, Katwiguru II, Kausa, Kavasewa, Kavingo, Kavumu, Kayna, Kazaroho, Kazinga, Kazuba, Kialamahindi, Kibanda, Kibarizo, Kibati, Kibaya, Kibirizi, Kibumba, Kibututu, Kigezi, Kihondo, Kihuma, Kikarara, Kikingi, Kikura, Kikuvo, Kilalo, Kilambo, Kilia, Kilya, Kimoka, Kingarame, Kingi, Kinigi, Kinihira, Kinihya, Kinumbi, Kinyamahura, Kinyambahore, Kinyandonyi, Kinyatsi, Kinyumba, Kipese, Kirambo, Kirima, Kirindera, Kirumba, Kisaka, Kisalala, Kisanga, Kiseguru, Kisharu, Kishishi, Kishondji, Kisigari, Kisiki, Kisima, Kisui, Kisunga, Kitagoma, Kitalima, Kitarama, Kitchanga, Kitembe, Kitereko, Kitevya, Kitokolu, Kitsambiro, Kitumbiro, Kitunda, Kivugha, Kivuye, Kiwanja, Kiyeye, Kiziba II, Kizimba, Kokola, Kugheki, Kukutama, Kyaghala, Kyambogho, Kyasenda, Kyavikere, Lesse, Libokora, Linzo Sisene I, Livano, Loashi, Loselose, Luanoli, Lubango, Lubano, Lubero, Luhanga, Luhinzi, Luhotu, Luke, Lukuka, Lukweti, Lume, Luofu, Lupango, Lushebere, Lwama, Lwibo, Mabambi, Mabenga, Mabhale, Mabingi, Maboya, Mabuku, Mabuo, Mafofiki, Mahanga, Mahigha, Makisabo, Makoka, Makumbo, Makungwe, Malambo, Malihi, Maliningi, Mambanike, Mambau, Mambolu, Mambume, Mamove, Mamove-Maleki, Mamunjoma, Mangina, Mangiyo, Manguredjpa, Manzanza, Mapasana,

Masambo, Masenge, Masereka, Masisi, Mataba, Matanda, Matebe, Matembe, Matombo, Matungu, Mayeba, Mayele, Mayi Moto, Mayimoya, Mbau, Mbuhi-Pilote, Mbwavinwa, Mengo, Miandja, Mighende, Mikeno, Mikumbi, Mikweti, Mirambi, Miriki, Mironge, Morondoro-Kighali, Mount Bisoke, Mount Karisimbi, Mount Mikeno, Mount Sabinio, Mpati, Mubambiro, Munganjo, Mugogo, Muhanga, Muhemba, Muheto, Muhongozi, Mukoko, Mukumomole, Mulekera, Mulimbi, Mulindi, Mulwa, Munguli, Munigi, Munoli, Munzowa, Murambi, Musenda, Mushaki, Mushweshwe, Musienene, Musimba, Musindi, Musu, Mutanda, Mutendero, Mutido, Mutongo, Mutsa, Mutwanga, Muvugha, Mwalika, Mwanvura, Mwenda, Mweso, Nchankere, Ndama, Ndeko, Ndiva I, Ndwali, Ngangi II, Ngangi III, Ngeleza, Ngesha, Ngoroba, Ngugo, Ngululu, Ngwele, Ngwenda, Niongera, Nkiko, Nkwenda, Nobili, Nsungu, Ntamugenga, Nyabanira, Nyabiondo, Nyahanga, Nyakakoma, Nyamilima, Nyamitwitwi, Nyangutu, Nyanzale, Nyarubande, Nyarubara, Nyiragongo, Nzakia, Nzenga, Nzulo, Oicha, Opira I, Pabuka, Paida, Pamba, Pinga, Rangira, Remeka, Robe, Rubare, Rubavu, Rubaya, Rubona, Rubumba, Rugarama, Rugari, Rugarika, Rugetsu, Ruginga, Rukara, Rukoko, Rukoro, Rumangabo, Runyonyi, Rusamambu, Rusayo, Rusekera, Ruseme, Rushege, Rushovu, Rutoboko, Rutshuru, Rutsiro, Ruvumu, Ruwenzori II, Rwangoma, Rwanguba, Sake, Samboko, Shanghi, Showa, Singa, Supa, Swagara, Tarika, Tchanitchani, Tchanzu, Tenambo, Tongo, Tsotsora, Tungudu, Ufumandu, Vido I, Virunga National Park, Visiki, Vitshumbi, Vuhangi, Vuhira, Vuhovi, Vuranga, Vusesa, Vuyinga, Walikale, Waloa Loanda, Watalinga.

In Nord-Ubangi, 8 incidents killing 5 people were reported. The following locations were among the affected: **Bosobolo, Gbadolite, Taragini, Yakoma.**

In Sankuru, 7 incidents killing 6 people were reported. The following locations were among the affected: **Lodja, Tshumbe.**

In Sud-Kivu, 632 incidents killing 769 people were reported. The following locations were among the affected: **Ake I, Ake II, Balala, Baliga, Baraka,**

Baraka - Mushimbakye, Bibogobobo, Bideka, Bigaragara, Bijojo, Bijombo, Bilalombili, Birava, Bitale, Biziba, Bugobe, Bugorhe, Bukavu, Bukavu - Bagira, Bukavu - Kadutu, Bukavu - Ndendere, Bukavu - Panzi, Bulenga, Bulonge, Bulongo-Rouge, Bunyakiri, Burhale, Busaba, Bushamba, Bushwira, Butacha, Bwegera, Byalere, Cakira, Chambombo, Chaminunu, Chanzovou, Chibinda, Cholobera, Cifunzi, Cihumba, Cirunga, Fizi, Ibumba, Idunga, Ikoma, Ikumbana, Ilakala, Iremya, Irumba, Irungu, Itota, Kabanga, Kabare, Kabere, Kabikokole, Kabindula, Kabingo, Kaboke, Kabumbe, Kabunambo, Kabushwa, Kaduma, Kagogo, Kagunga, Kahanda, Kahololo, Kahungwe, Kahuzi-Biega National Park (HQ), Kajembwe, Kakongya, Kakuku I, Kakumbukumbu, Kalega, Kalehe, Kalimabenge, Kalingi, Kalonge, Kalundja, Kalundu, Kalunga, Kalungu, Kamanyola, Kamituga, Kamombo, Kandali, Kanga, Kangwe, Karega, Karhale, Karhundu, Karunga, Kasambura, Kasenga, Kshalalo, Kasheke, Katalukulu, Katana, Katasomwa, Kateja, Katogota, Katongo, Katonyero, Katungulu, Kavimvira, Kavumu, Kazimia, Kibe, Kibirizi, Kibungu, Kigoma, Kigongo, Kigulube, Kigushu, Kijombo, Kilembwe, Kiliba, Kilumbi, Kilungutwe, Kimanga, Kimbondi, Kimuka, Kirungu, Kiryama, Kiseke, Kisombe, Kisozi Kabumenge, Kitasha, Kitembe, Kitemesho, Kitoga, Kivumu, Kiziba, Koweit-Bulunge, Kusisa, Kyanyunda, Lamera, Lubemba, Luberizi, Lugushwa, Luhihi, Luhololo, Lukando, Lukoma, Lukongo, Lulimba, Lulinda, Lumbishi, Lurhala, Lusambo, Lusenda, Lusuku, Luvungi, Lwaku, Lweba, Magaja, Magunda, Maheta, Maindombe, Majaga, Makengere, Makobola, Makungu, Malinde, Masango, Mashango, Matyaza, Mboko, Mbonobono, Mikamba, Mikenge, Minembwe, Minova, Misisi, Mitobo, Mubere, Mudaka, Mugeti, Mugogo, Muhungu, Mukolwe, Mukuyu, Mukwezi, Mulongwe, Mulwa, Munanira, Munara, Munywema, Muranvya Catholique, Mushonjo Lubemba, Mutambala, Mutarule, Mwayenga, Mwenga, Nabombe, Nabwizaura, Nakanango, Nakungwe, Nalubwe, Namukangaza, Natulonge, Ndende, Ngalula, Ngoma, Nguliro, Nguma, Numbi, Nyakabere II, Nyamakana, Nyamutiri, Nyange, Nyantande, Nyantende, Nyombe, Rama, Rombe I, Rubuga, Rudaga, Rudefu, Rudefwe, Rugenge, Rugezi, Rugongo, Ruhuha, Rukuka, Runundu Cepac, Runywera, Rutigita Monyi, Sange, Sango, Sebele,

Shabunda, Shanje, Shuni, Swima, Tshifunzi, Tukumbe, Tulambo, Tuwetuwe, Ubwari Peninsula, Uvira, Walungu, Ziralo.

In Sud-Ubangi, 4 incidents killing 0 people were reported. The following locations were among the affected: **Gemena, Libenge.**

In Tanganyika, 66 incidents killing 55 people were reported. The following locations were among the affected: **Bendera, Butondo, Kabeke, Kabimba, Kalemie, Kalemie - Lukuga, Kalume, Kaoze, Kasanganyemba, Katibili, Katonge, Katuba, Kongolo, Lambo, Lumumba, Manono, Mapanda, Mulembwe, Mumbwili, Musebe, Muzinga, Mwanba-Luhonge, Nganza, Nyunzu, Rutuku, Tanganyika, Tembwe, Tundula.**

In Tshopo, 32 incidents killing 4 people were reported. The following locations were among the affected: **Bafwamiti, Bafwasende, Isangi, Kisangani, Lokutu, Mongandjo, Tshopo.**

In Tshuapa, 4 incidents killing 1 person were reported. The following locations were among the affected: **Boende, Djolu.**

In Équateur, 3 incidents killing 5 people were reported. The following locations were among the affected: **Bikoro, Mbandaka.**

Sources

- ACLED – Armed Conflict Location & Event Data Project: Africa (10 March 2023), 10 March 2023
<https://www.acleddata.com/download/2909/>
- GADM – Global Administrative Areas: gadm36_COD_shp.zip, Version 3.6, 6 May 2018a
http://biogeo.ucdavis.edu/data/gadm3.6/shp/gadm36_COD_shp.zip
- GADM – Global Administrative Areas: gadm36_levels.shp, Version 3.6, 6 May 2018b
http://biogeo.ucdavis.edu/data/gadm3.6/gadm36_levels.shp.zip
- Raleigh, Clionadh; Linke, Andrew; Hegre, Håvard, and Karlsen, Joakim: “Introducing ACLED-Armed Conflict Location and Event Data”, in: Journal of Peace Research (47(5) 2010), pp. 651–660
<http://jpr.sagepub.com/content/47/5/651.full.pdf+html>
- Smith, Walter H. F. and Wessel, Paul: Global Self-consistent Hierarchical High-resolution Geography (GSHHG), Version 2.3.4, 1 May 2015
<https://www.ngdc.noaa.gov/mgg/shorelines/data/gshhg/latest/>

Disclaimer

Event data may be revised or complemented in future updates. Updates in ACLED’s datasets will not necessarily be reflected in ACCORD’s reports if the update occurs close to or after the latter’s publication. Changes in the sources used by ACLED to collect incident data might affect the comparability of data over time. For more information on ACLED’s methodology, please see www.acleddata.com/resources/. For more information on ACCORD’s products based on the data, please see the

[ecoi.net blog posts tagged with “ACLED”](#). The lack of information on an event in this report does not permit the inference that it did not take place. The boundaries and names displayed do not imply endorsement or acceptance by the Austrian Red Cross.

Cite as

- ACCORD – Austrian Centre for Country of Origin & Asylum Research and Documentation: Democratic Republic of Congo, year 2022: Update on incidents according to the Armed Conflict Location & Event Data Project (ACLED), 12 April 2023