

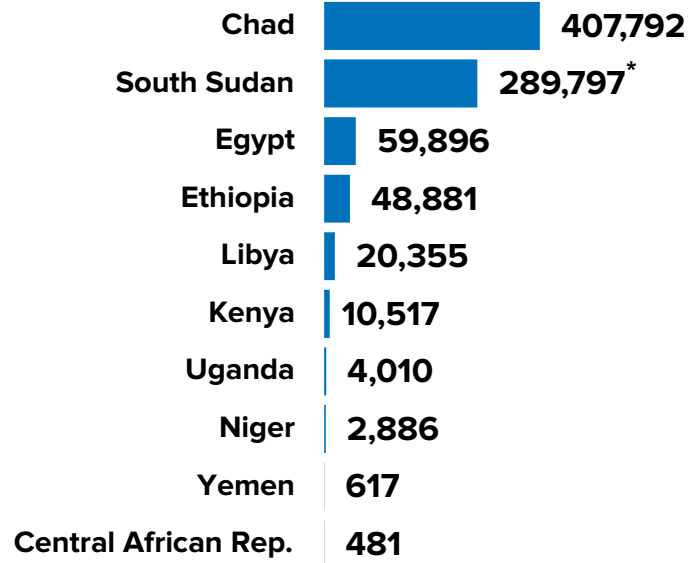
845,232
SUDANESE REFUGEES AND ASYLUM-SEEKERS

3.71M
INTERNALLY DISPLACED IN SUDAN

2,060
ASSISTED REFUGEE RETURNEES (2019)

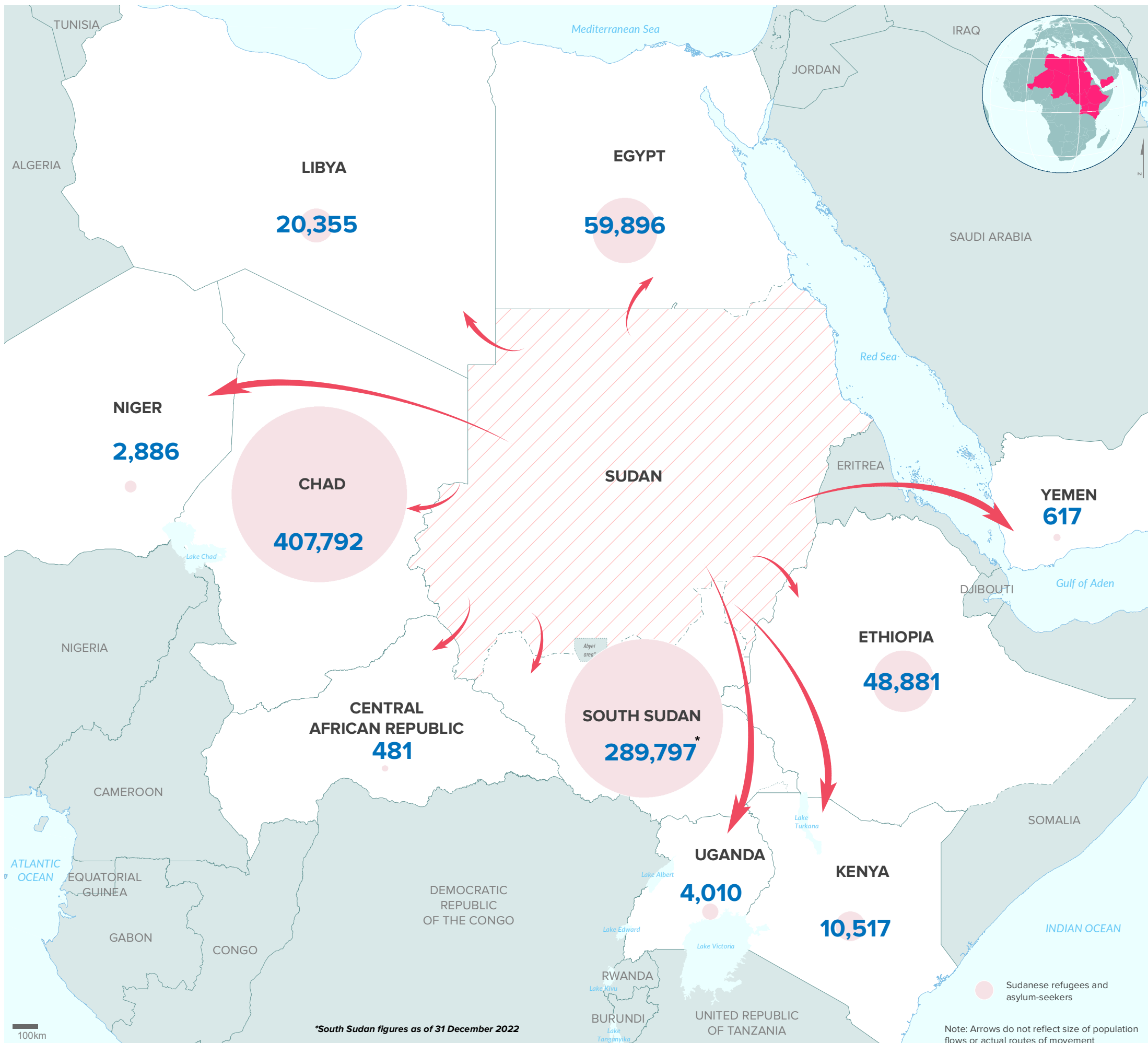
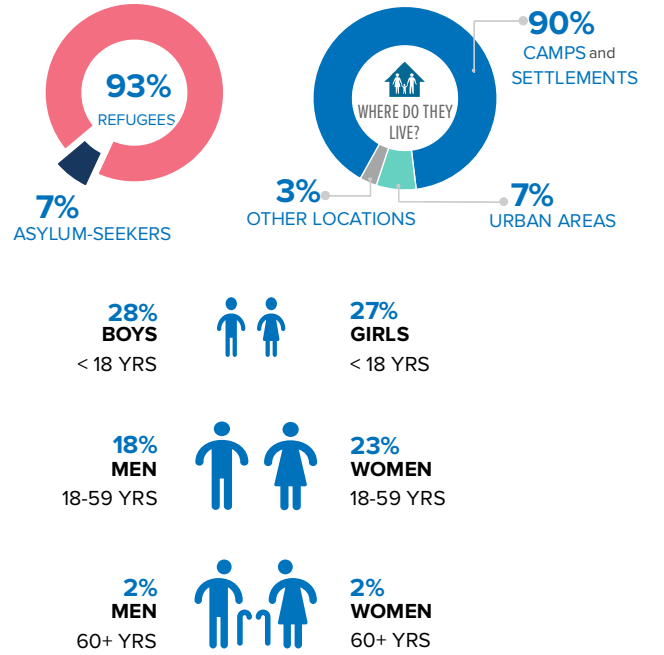
1.14M
REFUGEES AND ASYLUM-SEEKERS IN SUDAN

TOTALS BY HOST COUNTRY



*South Sudan figures as of 31 December 2022

KEY POPULATION STATISTICS
SUDANESE REFUGEES AND ASYLUM-SEEKERS



*South Sudan figures as of 31 December 2022

Note: Arrows do not reflect size of population flows or actual routes of movement

The boundaries and names shown and the designations used on this map do not imply official endorsement or acceptance by the United Nations. Final boundaries between the Republic of Sudan and the Republic of South Sudan and Somalia and Ethiopia have not yet been determined. Final status of the Abyei area is not yet determined.

Creation date: 26 Mar 2023 Sources: Geographic data: UNCS. Population statistics: UNHCR Monthly Statistical Reports 28 February 2023 or latest available. Statistics should be considered provisional and subject to change.

Author: UNHCR Regional Bureau for East and Horn of Africa and Great Lakes Feedback: DIMAEHAGL@unhcr.org