

KEY POPULATION STATISTICS

146,066

ETHIOPIAN REFUGEES AND ASYLUM-SEEKERS IN NEIGHBOURING COUNTRIES

BREAKDOWN:

71,390*

NOV 2020 TO DEC 2022

**This figure includes 64,600 new arrivals and increases due to natural growth, registered/activated after Nov 2020 but arrived before Nov 2020.*

74,676

PRE NOV 2020

BY AGE AND GENDER

21%
BOYS
< 18 YRS



19%
GIRLS
< 18 YRS

32%
MEN
18-59 YRS



25%
WOMEN
18-59 YRS

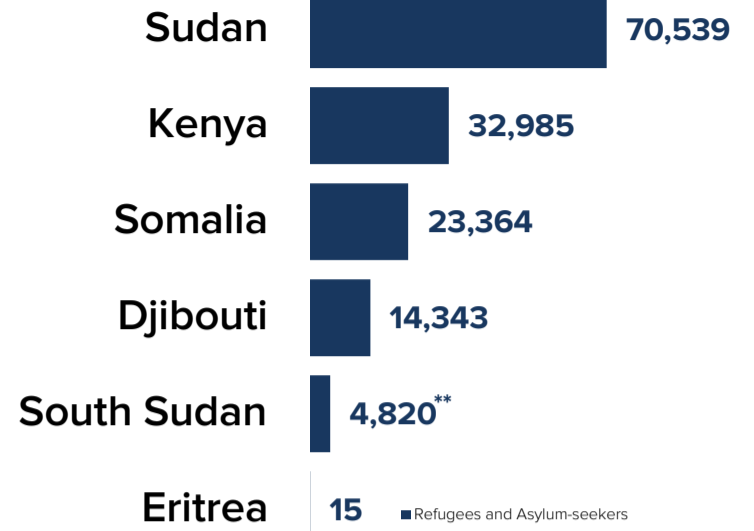
2%
MEN
60+ YRS



1%
WOMEN
60+ YRS

Percentages from UNHCR's 2021 Annual Statistics Report

BY COUNTRY OF ASYLUM



**South Sudan figure as of 31 December 2022.

2.73M***

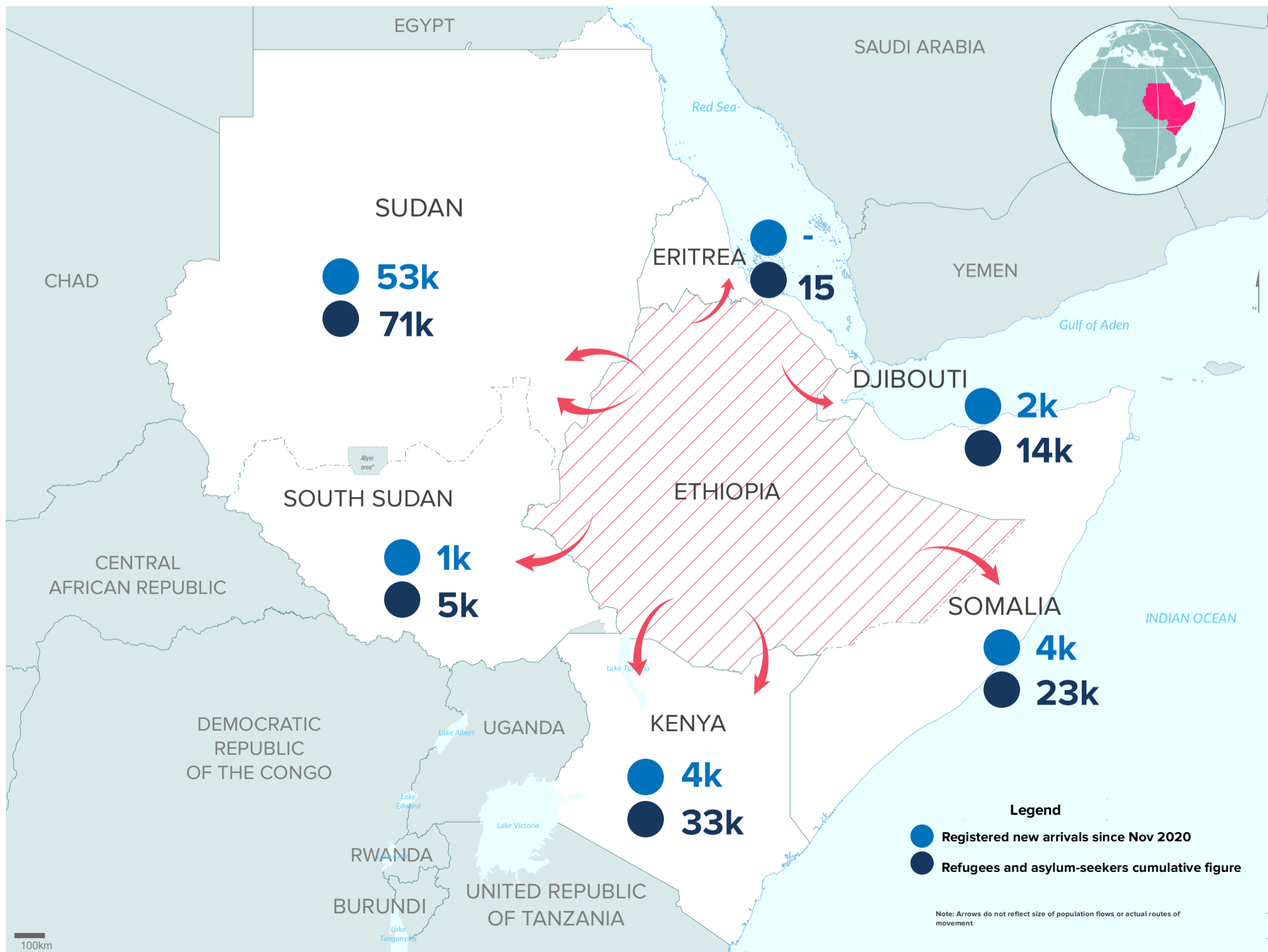
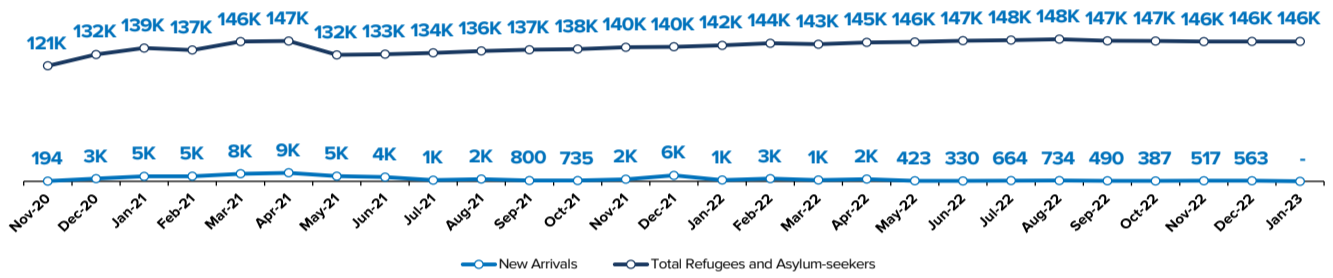
INTERNALLY DISPLACED PERSONS IN ETHIOPIA

***ERRATA CORRIGE: Sources : DTM Ethiopia - Endorsed National Displacement Report 13 (June - July 2022)

884,294

REFUGEES AND ASYLUM-SEEKERS HOSTED IN ETHIOPIA

ETHIOPIAN PoCs DISPLACEMENT TRENDS Nov. 20 to Jan. 23



The boundaries and names shown and the designations used on this map do not imply official endorsement or acceptance by the United Nations. Final boundaries between the Republic of Sudan and the Republic of South Sudan and Somalia and Ethiopia have not yet been determined. Final status of the Abyei area is not yet determined.

Creation date: 27 Feb 2023 Sources: Geographic data: UNCS. Population statistics: UNHCR Monthly Statistical Reports 31 January 2023 or latest available. Statistics should be considered provisional and subject to change.

Author: UNHCR Regional Bureau for East and Horn of Africa and Great Lakes Feedback: DIMAEHAGL@unhcr.org