

326,487
REFUGEES AND ASYLUM-SEEKERS
IN NEIGHBOURING COUNTRIES

87,536
REFUGEES AND ASYLUM-SEEKERS
HOSTED IN BURUNDI

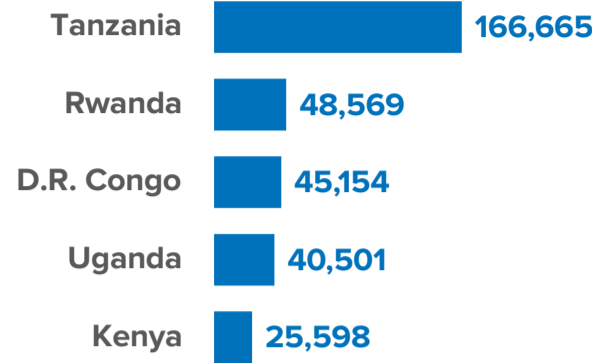
207,794
REFUGEE RETURNEES SINCE 2017

233
REFUGEE RETURNEES IN 2023

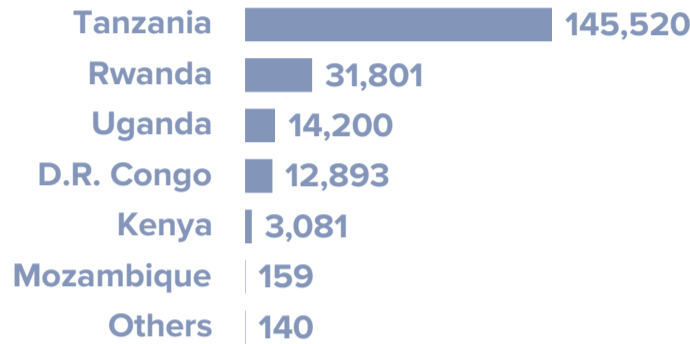
75,300*
INTERNALLY DISPLACED IN
BURUNDI

*DTM Burundi – Internal Displacement Dashboard

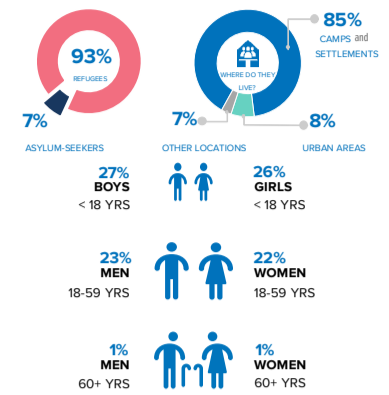
**BURUNDIAN REFUGEES AND ASYLUM SEEKERS
BY COUNTRY OF ASYLUM**



RETURNEES SINCE 2017 BY COUNTRY OF ASYLUM



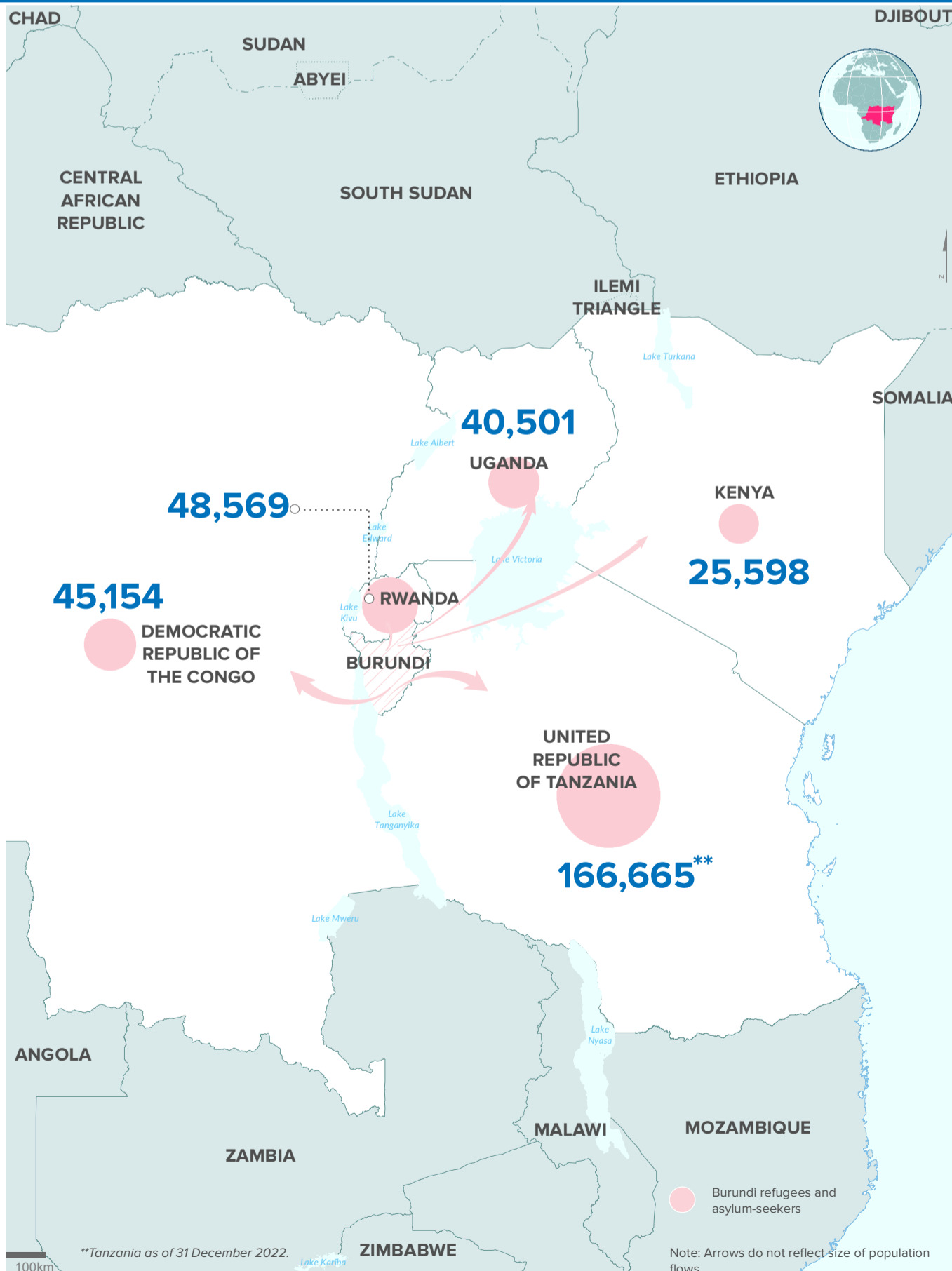
**KEY POPULATION STATISTICS
BURUNDIAN REFUGEES AND ASYLUM-SEEKERS**



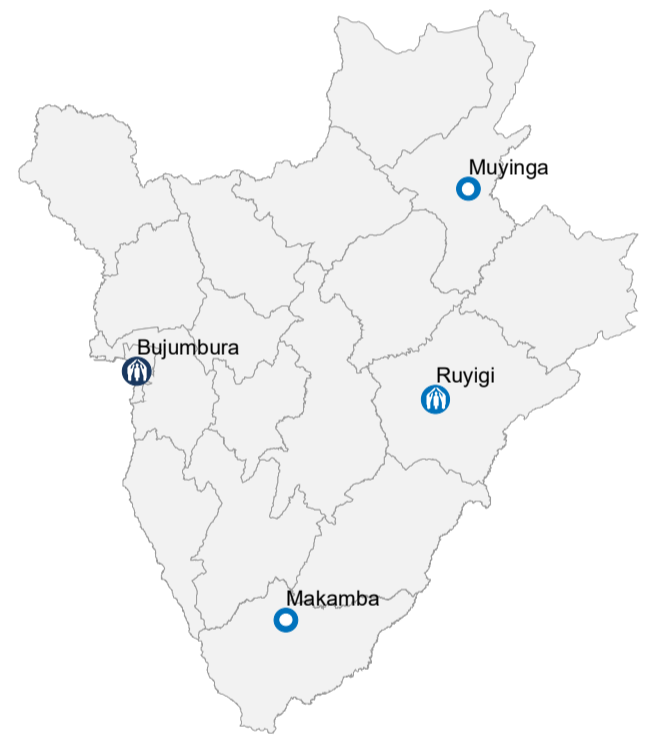
NEW ARRIVALS AND RETURNEES BY MONTH | 2023



Burundians displaced into neighbouring countries

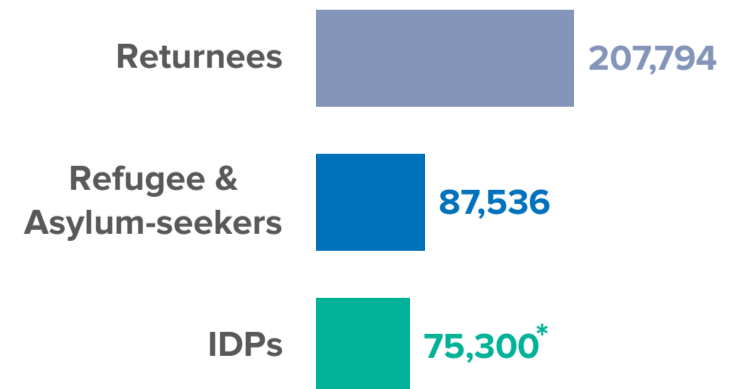


Population of concern to UNHCR in Burundi



370,630

Total population of concern
in Burundi as of January 2023.



By the end of January 2023, Burundi was host to 370,630 persons of concern. This includes 207,794 returnees mainly from Tanzania, Rwanda, DRC and Uganda and a further 87,536 refugees and asylum-seekers, as well as 75,300 IDPs.

*DTM Burundi – Internal Displacement Dashboard

The boundaries and names shown and the designations used on this map do not imply official endorsement or acceptance by the United Nations. Final boundaries between the Republic of Sudan and the Republic of South Sudan and Somalia and Ethiopia have not yet been determined. Final status of the Abyei area is not yet determined.