

323,658
REFUGEES AND ASYLUM-SEEKERS
IN NEIGHBOURING COUNTRIES

88,599
REFUGEES AND ASYLUM-SEEKERS
HOSTED IN BURUNDI

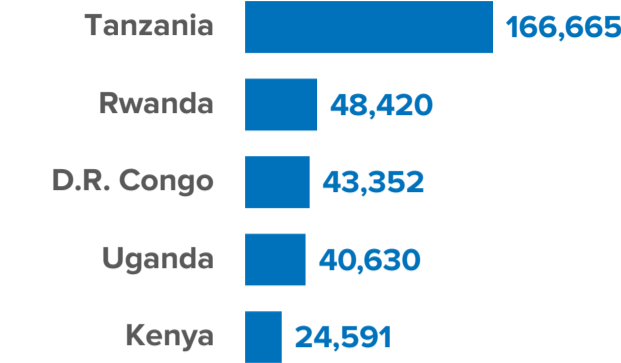
207,567
REFUGEE RETURNEES SINCE 2017

21,788
REFUGEE RETURNEES IN 2022

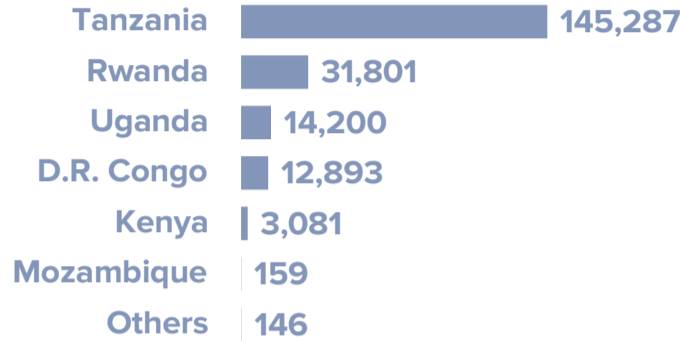
7,600*
INTERNALLY DISPLACED IN
BURUNDI

*The 7600 IDP figure refers to the IDPs of concern to UNHCR. This figure has been revised down from the total 83,588 IDPs reported in Burundi (IOM/DTM), the majority who are displaced due to natural disasters

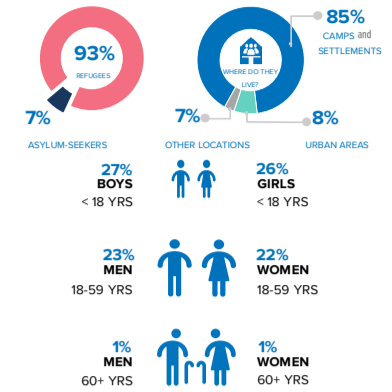
**BURUNDIAN REFUGEES AND ASYLUM SEEKERS
BY COUNTRY OF ASYLUM**



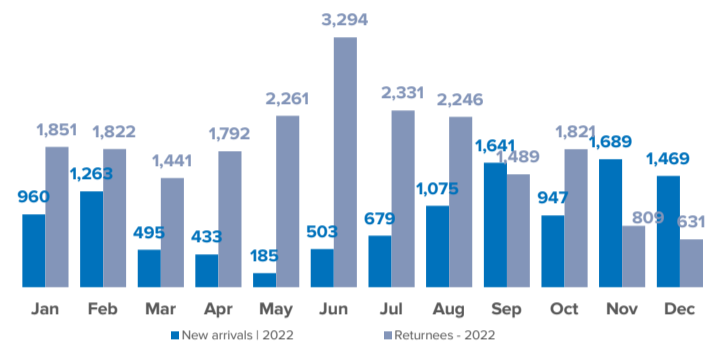
RETURNEES SINCE 2017 BY COUNTRY OF ASYLUM



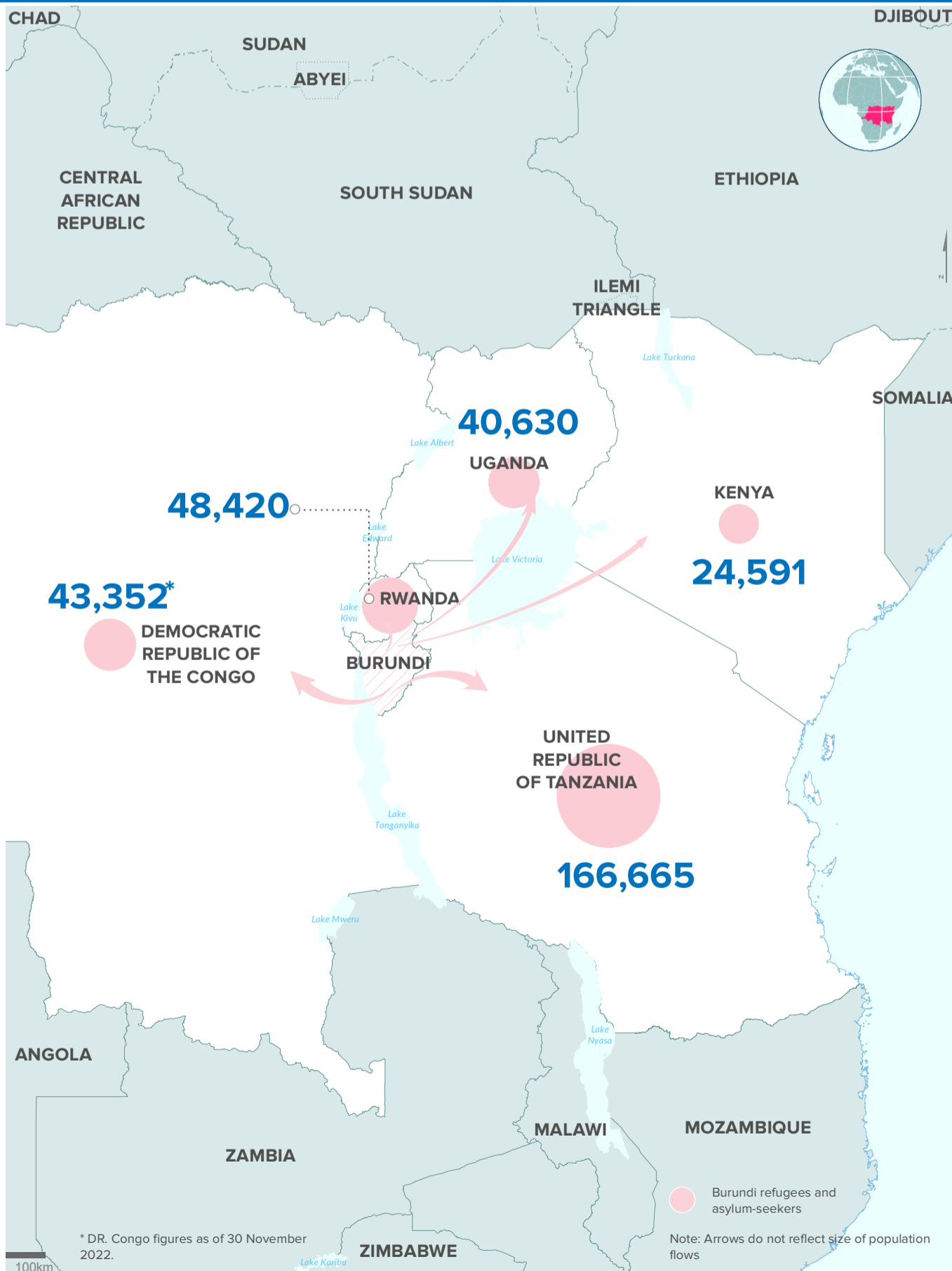
**KEY POPULATION STATISTICS
BURUNDIAN REFUGEES AND ASYLUM-SEEKERS**



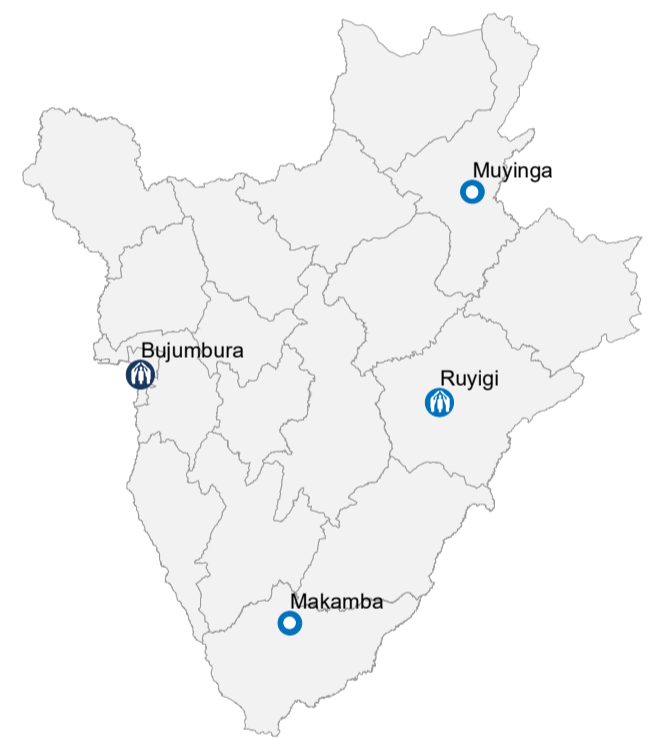
NEW ARRIVALS AND RETURNEES BY MONTH | 2022



Burundians displaced into neighbouring countries

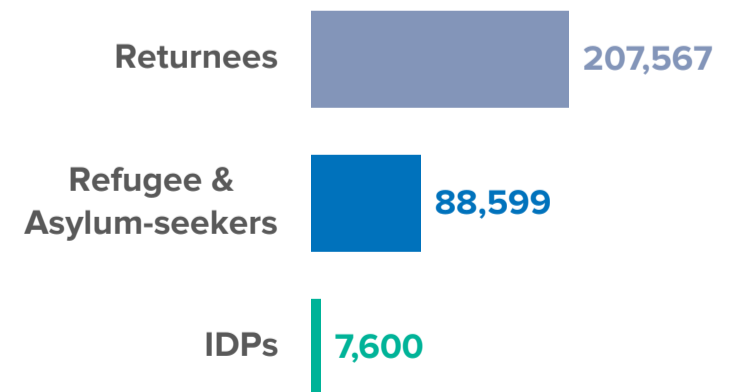


Population of concern to UNHCR in Burundi



303,766

Total population of concern
in Burundi as of December 2022.



By the end of December 2022, Burundi was host to 303,766 persons of concern. This includes 207,567 returnees mainly from Tanzania, Rwanda, DRC and Uganda and a further 88,599 refugees and asylum-seekers, as well as 7,600 IDPs.

The boundaries and names shown and the designations used on this map do not imply official endorsement or acceptance by the United Nations. Final boundaries between the Republic of Sudan and the Republic of South Sudan and Somalia and Ethiopia have not yet been determined. Final status of the Abyei area is not yet determined.

Creation date: 24 Jan 2023 Sources: Geographic data: UNCS. Population statistics: UNHCR Monthly Statistical Reports 31 December 2022 or latest available. Statistics should be considered provisional and subject to change.

Author: UNHCR Regional Bureau for East and Horn of Africa and Great Lakes Feedback: dimaehagl@unhcr.org