

322,900
REFUGEES AND ASYLUM-SEEKERS
IN NEIGHBOURING COUNTRIES

88,265
REFUGEES AND ASYLUM-SEEKERS
HOSTED IN BURUNDI

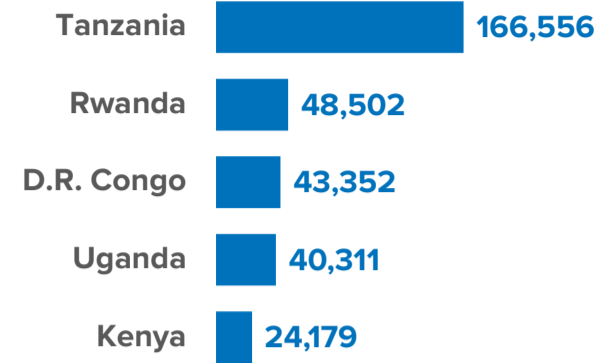
206,930
REFUGEE RETURNEES SINCE 2017

21,157
REFUGEE RETURNEES IN 2022

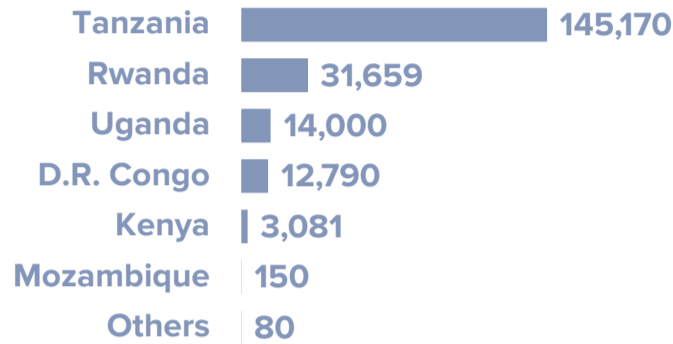
7,600*
INTERNALLY DISPLACED IN
BURUNDI

*The 7600 IDP figure refers to the IDPs of concern to UNHCR. This figure has been revised down from the total 83,588 IDPs reported in Burundi (IOM/DTM), the majority who are displaced due to natural disasters

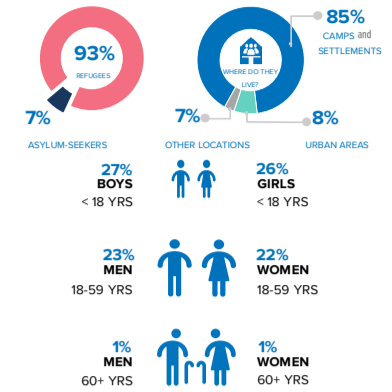
**BURUNDIAN REFUGEES AND ASYLUM SEEKERS
BY COUNTRY OF ASYLUM**



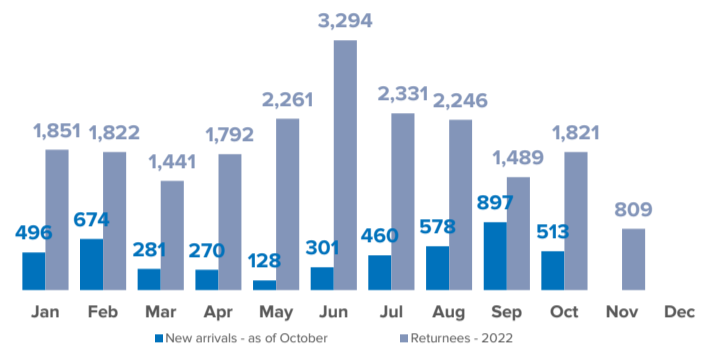
RETURNEES SINCE 2017 BY COUNTRY OF ASYLUM



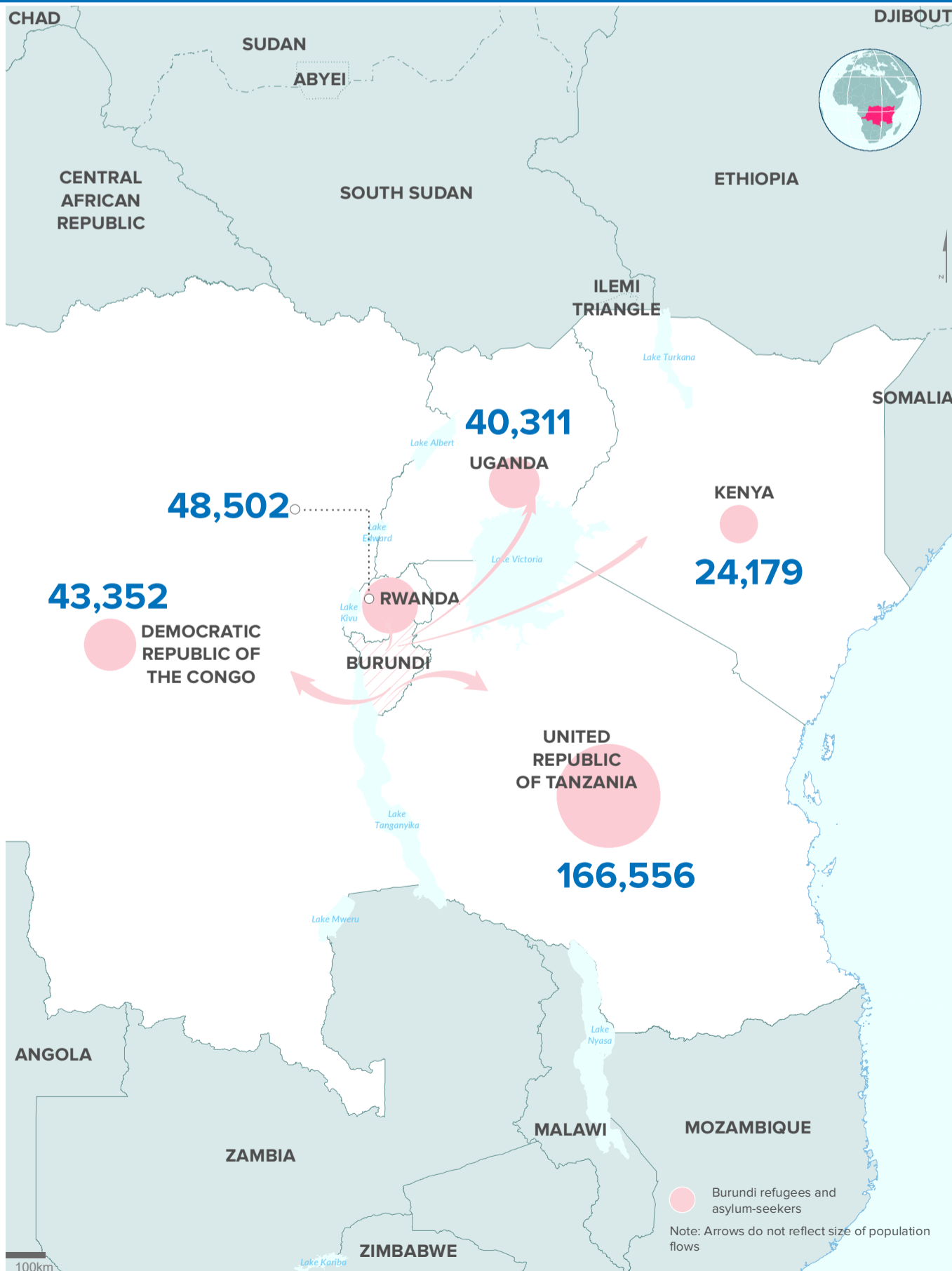
**KEY POPULATION STATISTICS
BURUNDIAN REFUGEES AND ASYLUM-SEEKERS**



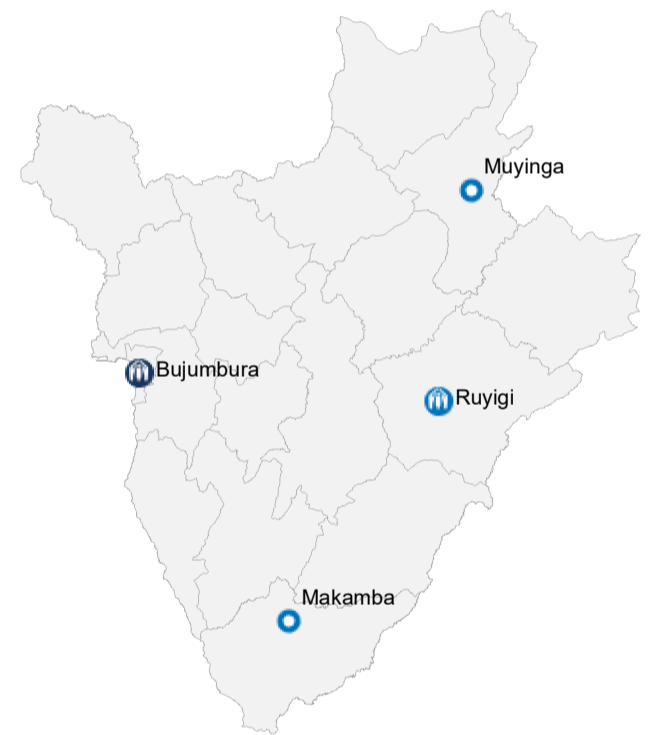
NEW ARRIVALS AND RETURNEES BY MONTH | 2022



Burundians displaced into neighbouring countries

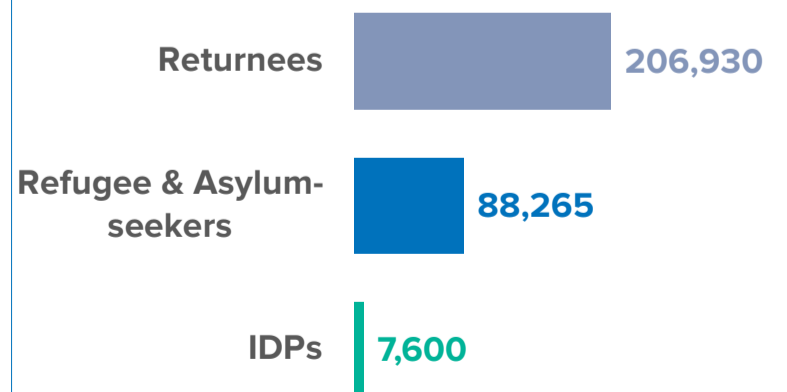


Population of concern to UNHCR in Burundi



302,795

Total population of concern
in Burundi as of November 2022.



By the end of November 2022, Burundi was host to 302,795 persons of concern. This includes 206,930 returnees mainly from Tanzania, Rwanda, DRC and Uganda and a further 88,265 refugees and asylum-seekers, as well as 7,600 IDPs.