



UNHCR
The UN Refugee Agency

DIMA - RBSA
Data, Identity Management and Analysis - Regional Bureau for Southern Africa

Population Data Analysis

Regional Bureau
for Southern Africa

September 2022



Overview

As of the end of September 2022, Southern Africa hosts around **8.6 million persons of concern (PoCs) to UNHCR**. This includes 1.1 million refugees and asylum-seekers and 6.9 million internally displaced persons (IDPs), as well as others of concern, refugee returnees and IDP returnees. **The Democratic Republic of Congo (DRC) represents 77 per cent of the regional data.**

Refugees, Asylum-Seekers and Others of concern

The region hosts **785,000 refugees, 278,000 asylum-seekers and 36,000 others of concern**. Among those 1.1 million PoCs, 74 per cent of them are from the countries outside of the Southern Africa region.¹ The top five countries of origin are Central African Republic (243,000), Rwanda (242,000), DRC (228,000), Burundi (84,000) and Ethiopia (61,000).

Internally Displaced Persons (IDPs)

In Southern Africa, there are **6.9 million internally displaced persons (IDPs)**. Most of them are conflict-induced, 6.4 million, but there are also natural disaster-induced IDPs, 0.5 million. The data on IDPs are reported in DRC, Congo, Mozambique and Zimbabwe (see Figure 1).

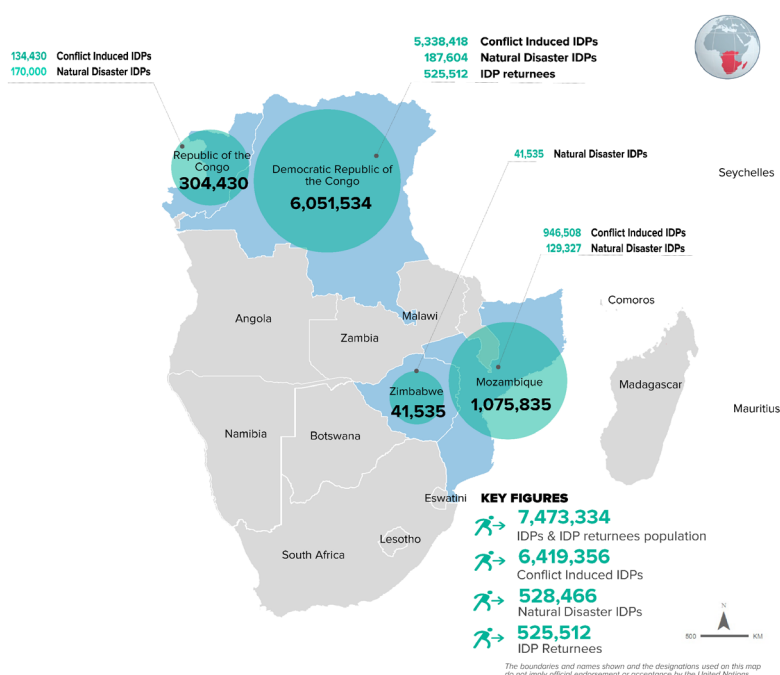


Figure 1. Number of IDPs in RBSA by Cause as of 30 September 2022

Durable Solutions

In 2022, 15,402 persons have been repatriated voluntarily thus far, with 2,805 persons repatriated in September. The largest group of returns was from Zambia to the DRC, with 2,159 persons repatriated in September. Further, there has been notable movements from Angola to the DRC in September, where, 47 families of 143 persons were repatriated to destinations in the DRC such as Kassai Province, Kinshassa, Kwilu Province and Goma.

From January to September 2022, 4,497 individuals of 1,063 cases were submitted for resettlement consideration. Among these cases, half were male and the other half were female with 57 per cent being children under age 18.

In the same period, 2,067 individuals departed for resettlement. A half of the departed cases were male and another half were female, similarly to submitted cases. Most persons have been considered for resettlement to the United States (3,417). The highest number of those departed also headed to the United States (1,285). In terms of country of asylums, the highest number of submitted applications were from Malawi (1,438) and Zambia (1,367). Congolese (DRC) is the nationality with the highest number of submissions (3,618) and departures (1,729).

Data Sources: proGres v4 (PRIMES) hosts the data of refugees and asylum-seekers in 11 countries. In South Africa, the data are managed by the government. In Angola, DRC, Zambia and Zimbabwe, some portions of the data are external. For IDP data, the source of DRC's IDP figure is the OCHA; the sources in Mozambique and Zimbabwe are the Displacement Tracking Matrix (DTM) of the IOM; and the source in the Republic of Congo is the government, the Ministry of Social Affairs and Humanitarian Action (MASAH).

¹ The Southern Africa region refers to the 16 countries covered by the Regional Bureau for Southern Africa of UNHCR including Angola, Botswana, Comoros, Congo, DRC, Eswatini, Lesotho, Madagascar, Malawi, Mauritius, Mozambique, Namibia, Seychelles, South Africa, Zambia and Zimbabwe.

KEY FIGURES



8,572,919

Total Population of concern



1,099,585

Refugees, asylum-seekers, other of concern & returnees**

REF **785,119**

ASY **278,090**

OOC **36,165**

RET **211**

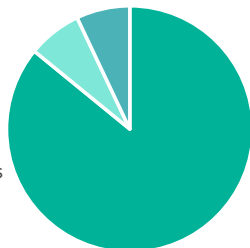


7,473,334

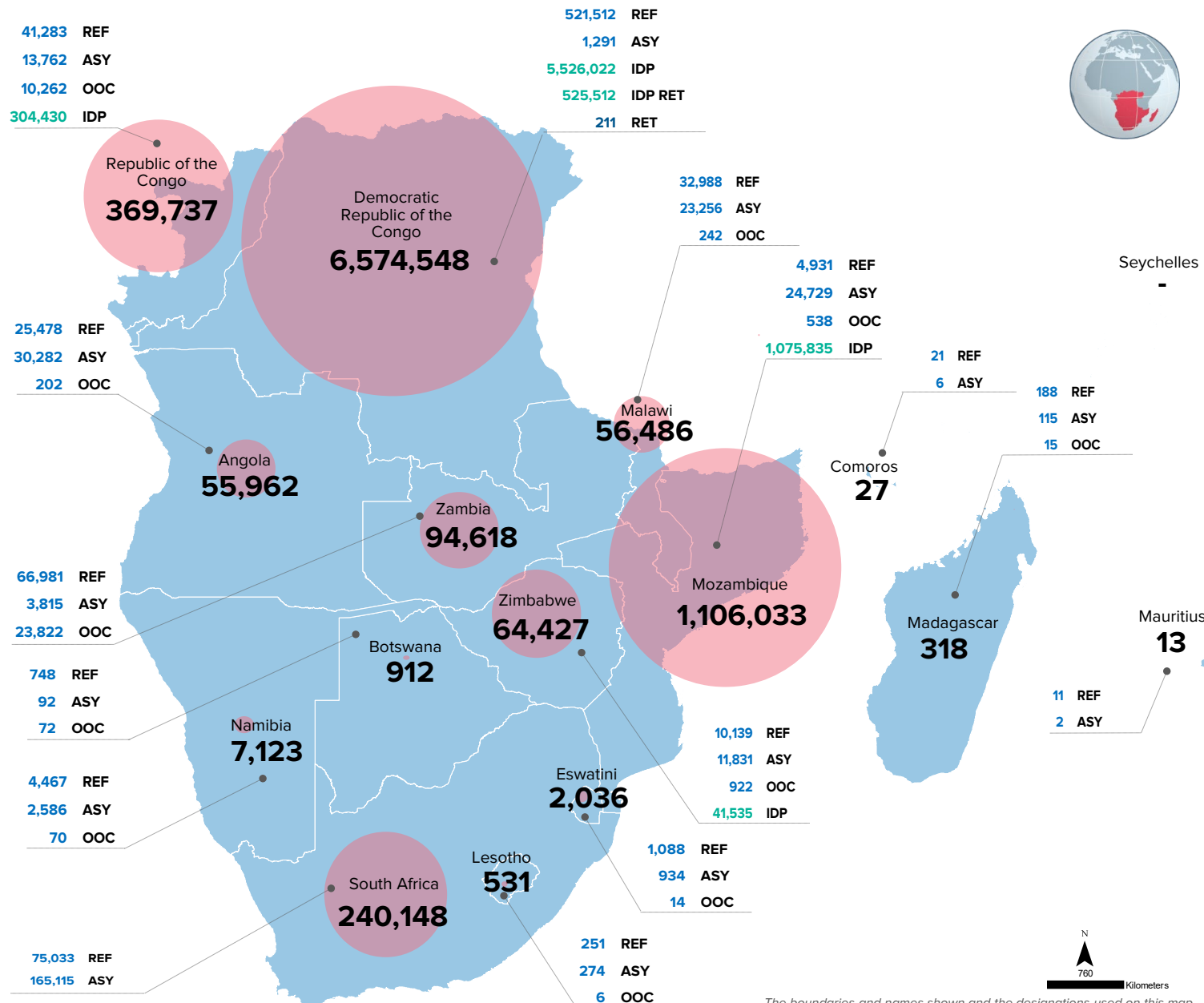
Conflict induced and Natural Disaster IDPs

Natural Disaster IDPs **528,466** 7%
IDPs RET **525,512** 7.0%

Conflict Induced IDPs **6,419,356** 86%



PoCs IN SOUTHERN AFRICA REGION*



The boundaries and names shown and the designations used on this map do not imply official endorsement or acceptance by the United Nations

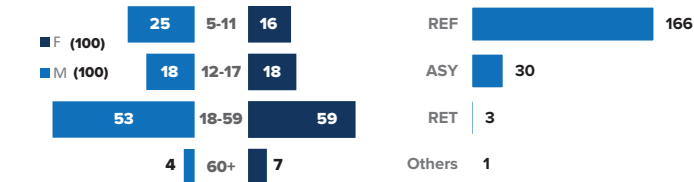
Author: UNHCR DIMA - RSA Contact: rsarbdima@unhcr.org

Source: UNHCR Primes, Government, IOM, OCHA, UNHCR

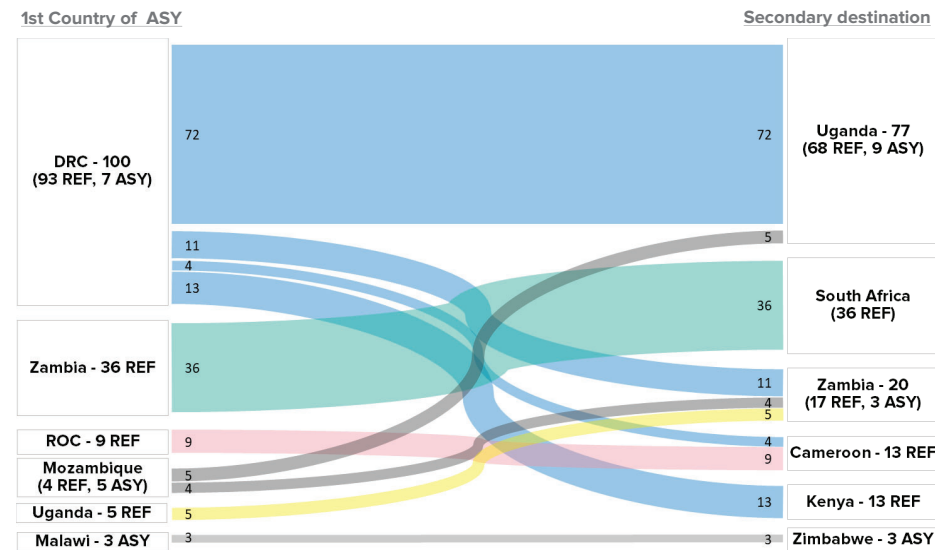
CROSS BORDER MOVEMENTS KEY FIGURES



AGES, GENDER AND LEGAL STATUS OF MOVERS **

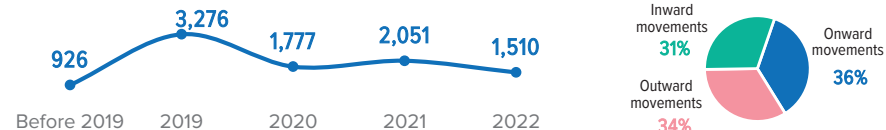


CROSS BORDER MOVEMENTS WHERE THE FLOW INVOLVED 3 POCs AND MORE *



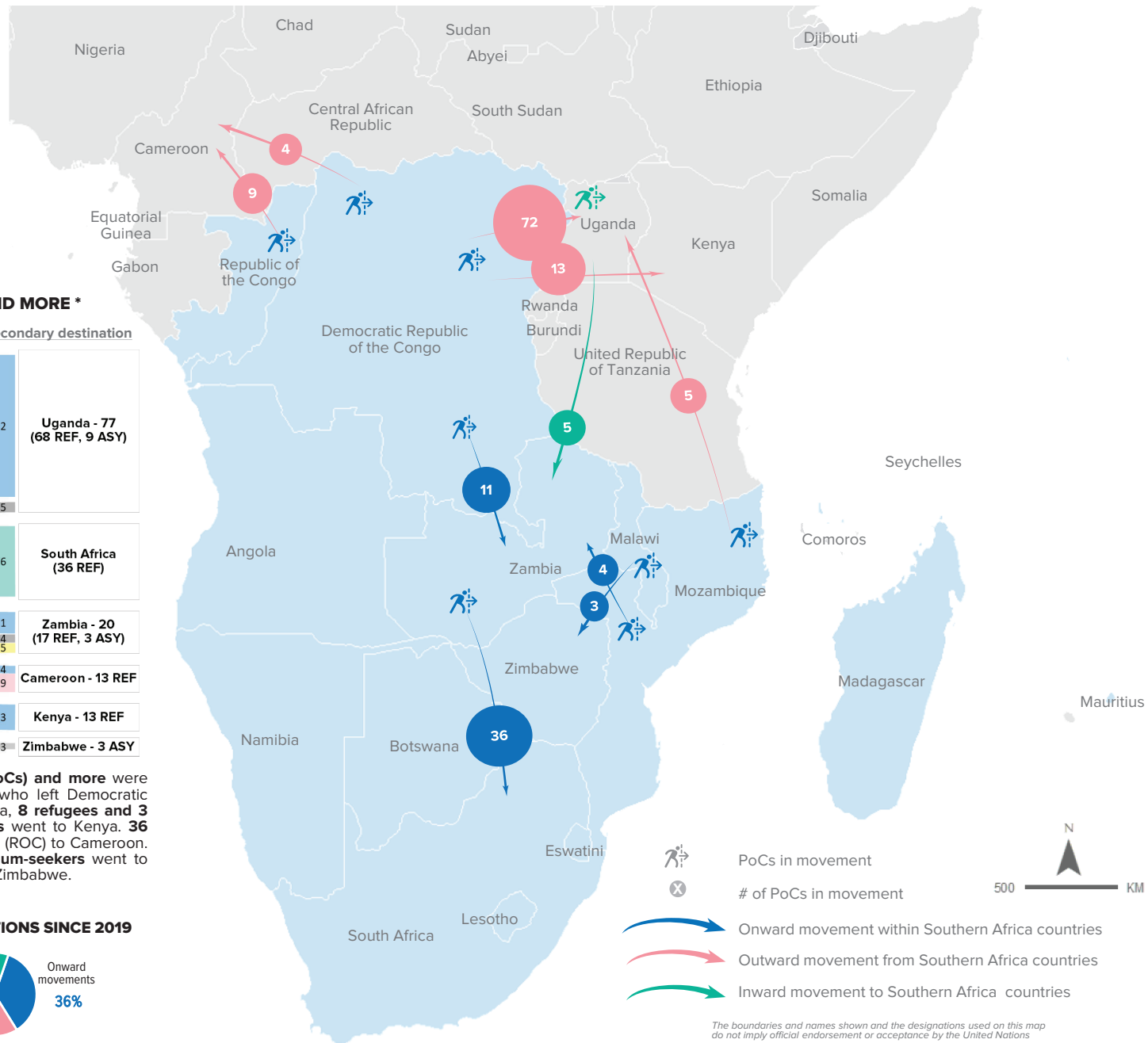
In September 2022, 162 cross-border movements of 3 Persons of Concern (PoCs) and more were recorded involving 147 refugees and 15 Asylum-seekers. From the 100 PoCs who left Democratic Republic of the Congo (DRC), 68 refugees and 4 asylum-seekers went to Uganda, 8 refugees and 3 asylum-seekers went to Zambia, 4 refugees went to Cameroon and 13 refugees went to Kenya. 36 refugees left Zambia for South Africa. 9 refugees went from Republic of the Congo (ROC) to Cameroon. From the 9 PoCs who left Mozambique, 4 refugees went to Zambia and 5 asylum-seekers went to Uganda. 5 refugees left Uganda to Zambia. 3 asylum-seekers went from Malawi to Zimbabwe.

CUMULATIVE CROSS BORDER MOVEMENTS TREND PER YEAR AND PROPORTIONS SINCE 2019



* The flows shown are restricted only to movements of a minimum group people, therefore the totals are different from the overall movements of the month due to the exclusion.

MAP OF THE CROSS BORDER MOVEMENTS WHERE THE FLOW INVOLVED 3 POCs AND MORE *



*PoCs = Person of Concerns

** REF = Refugee, ASY = Asylum-seeker, OOC = Other person of concern

Data sources: UNHCR PRIMES. For more information or to contribute, please contact UNHCR RBSA DIMA (rsarbdima@unhcr.org)

KEY FIGURES



15,042

Total Individuals repatriated since January 2022

6,786

Individuals repatriated within Southern Africa Region since January 2022

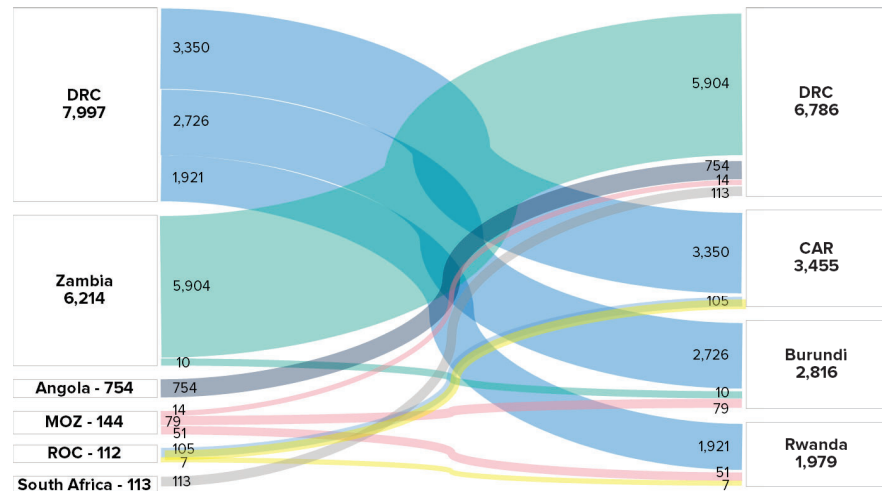
8,256

Individuals repatriated from Southern Africa Region to other countries outside of the region since January 2022

VOLREP* WHERE THE FLOW INVOLVE 5 POCs OR MORE

Country of Asylum

Country of Repatriation



TRENDS

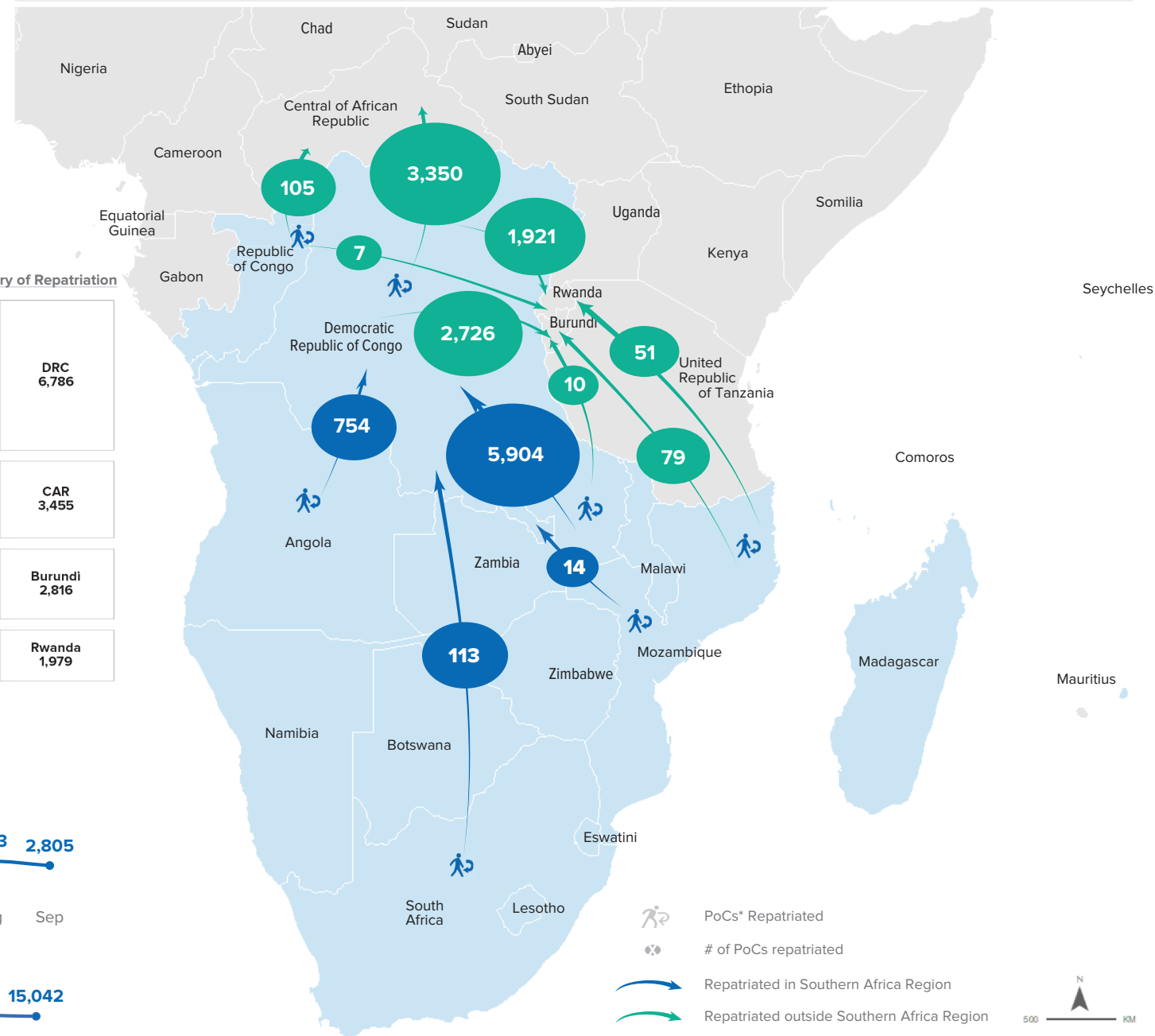
MONTHLY REPATRIATION SINCE JANUARY



ANNUAL REPATRIATION SINCE 2019



MAP OF VOLUNTARY REPATRIATION WHERE THE FLOW INVOLVE 5 POCs OR MORE



The boundaries and names shown and the designations used on this map do not imply official endorsement or acceptance by the United Nations

KEY FIGURES



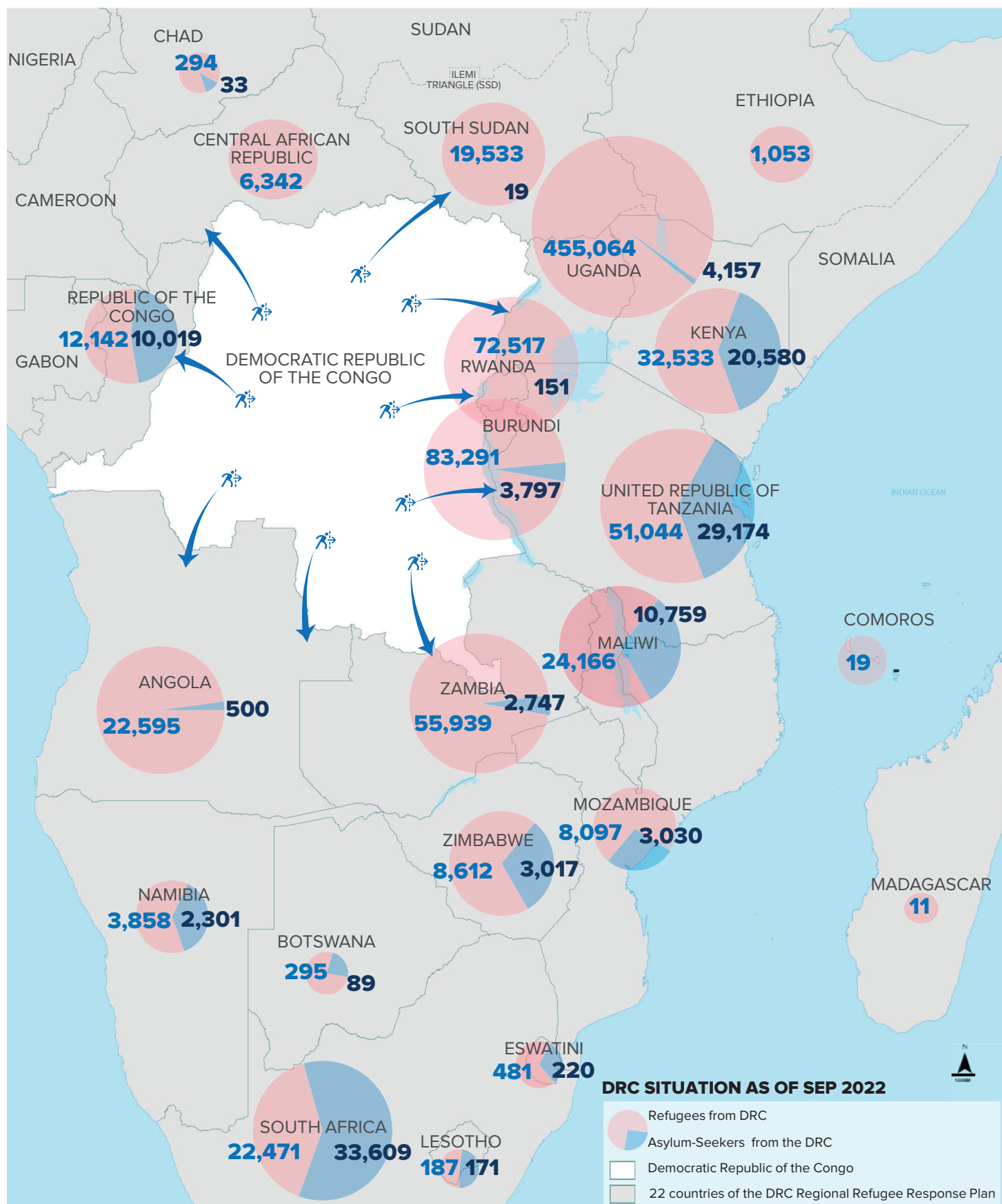
1,004,733
Total Persons of Concern



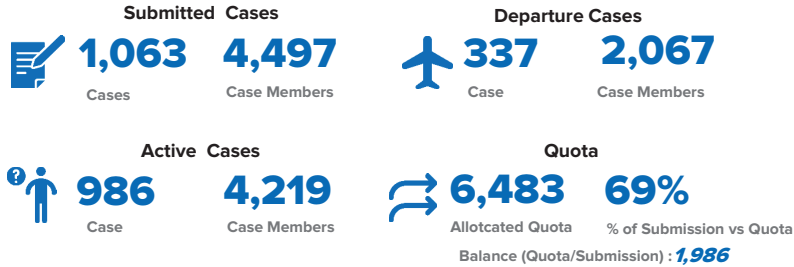
880,360
Refugees



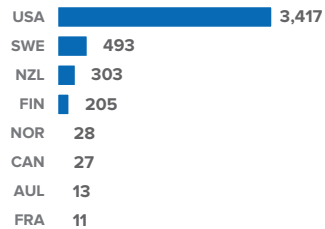
124,373
Asylum-Seekers



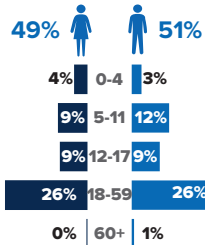
RESETTLEMENT KEY FIGURES



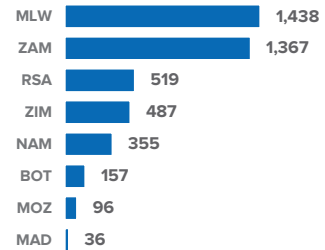
Submitted Cases Member by Country of Submission



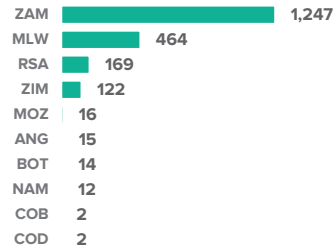
Departure Cases by Age and Gender



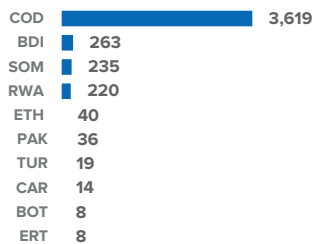
Submitted Cases Members by Top 10 Country of Asylum



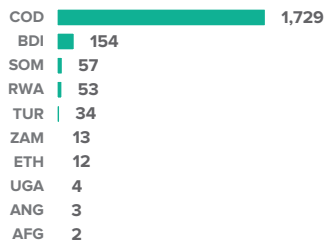
Departure Cases Members by Top 10 Country of Asylum



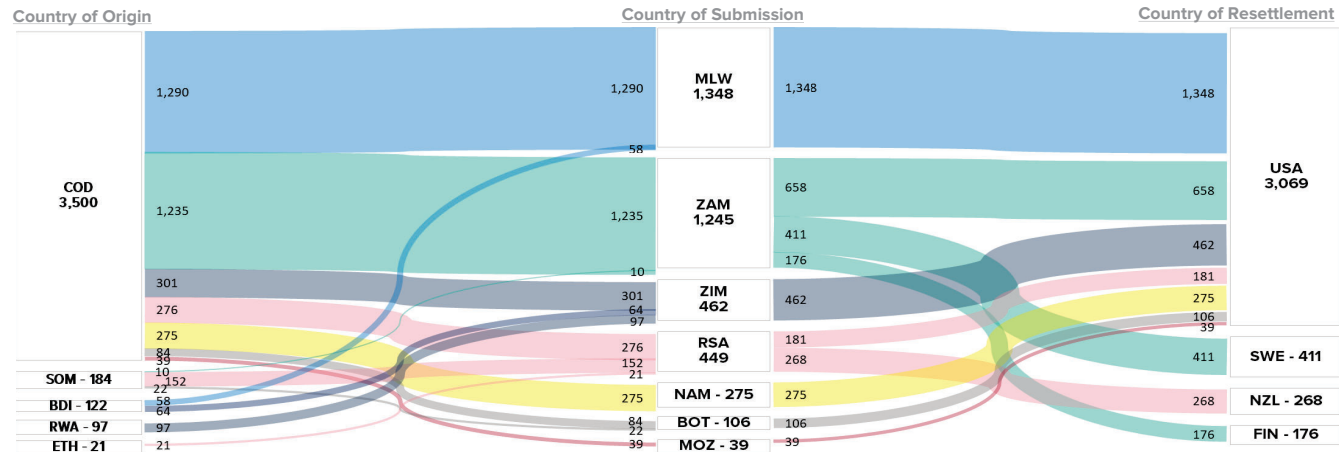
Submitted Cases Members by Top 10 Country of Origin



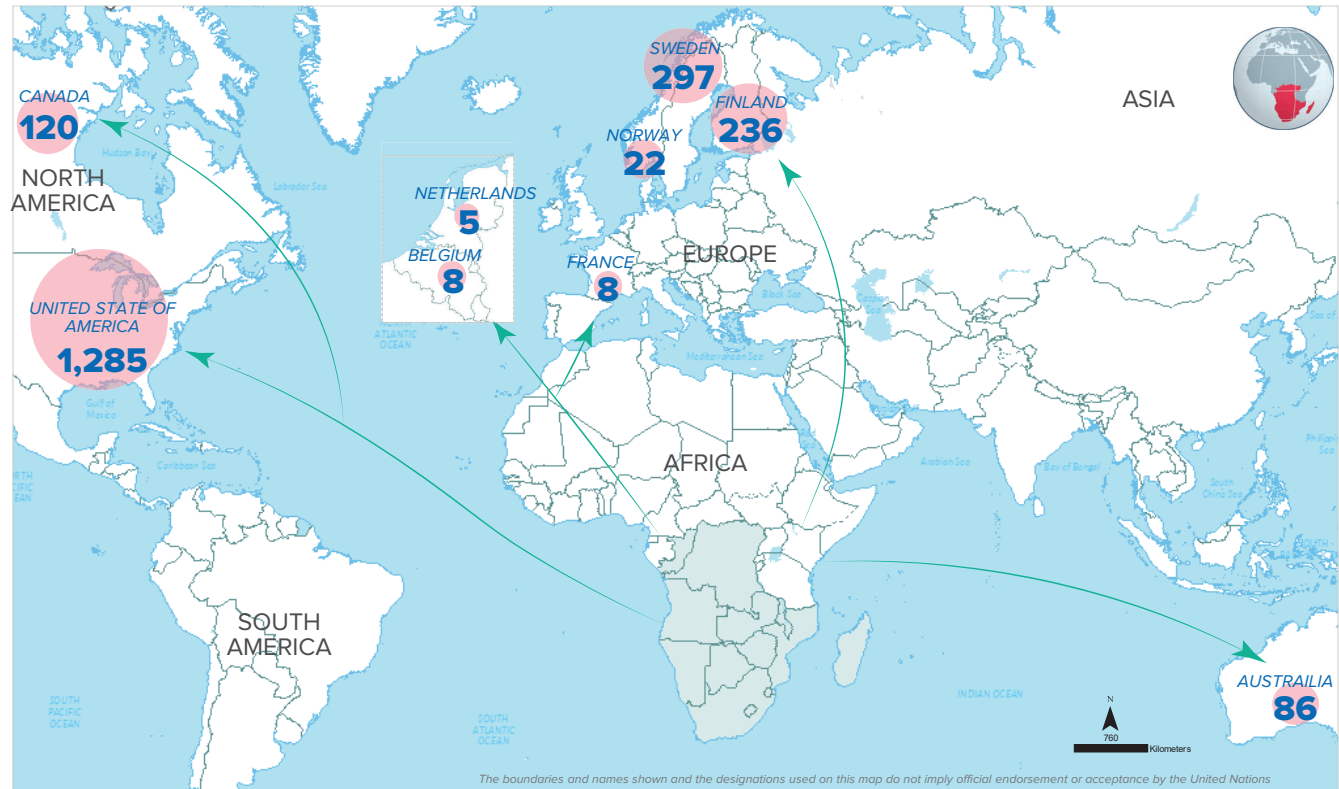
Departure Cases Members by Top 10 Country of Origin



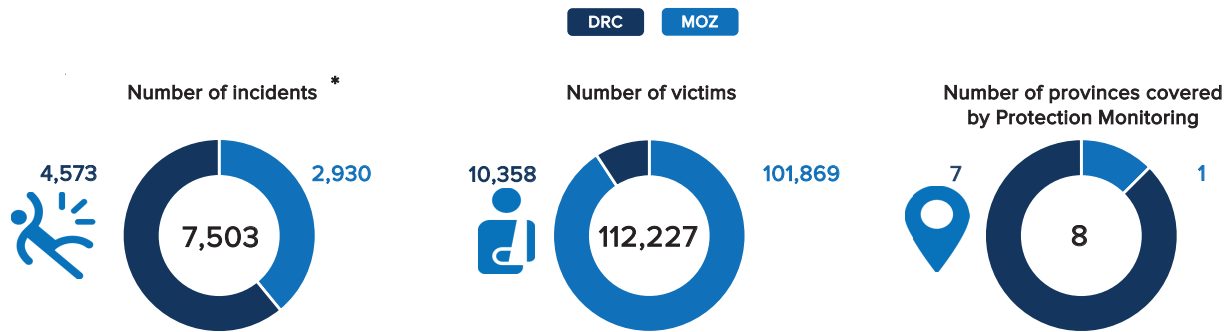
MOVEMENTS OF GROUPS OF 10 OR MORE RESETTLEMENT CASE MEMBERS



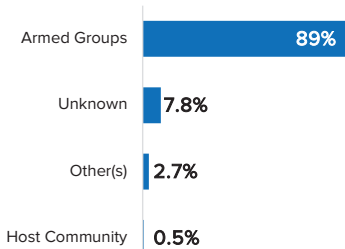
MAP OF THE DEPARTURES BY COUNTRY OF SUBMISSION



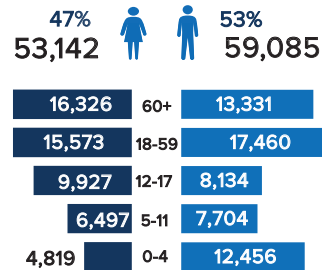
KEY FIGURES



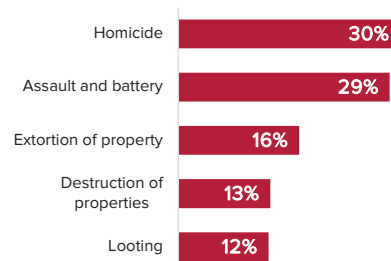
Top 4 incident perpetrators in Mozambique (%)



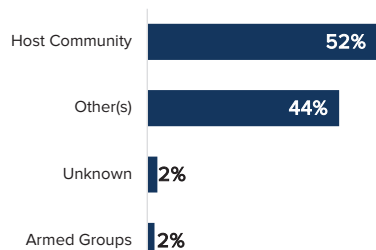
Victims by Age and Gender



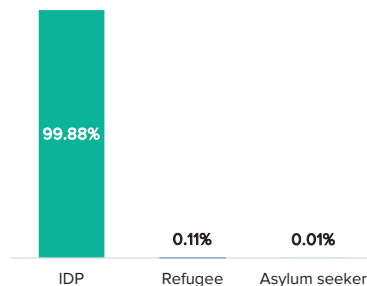
Top 5 protection incidents



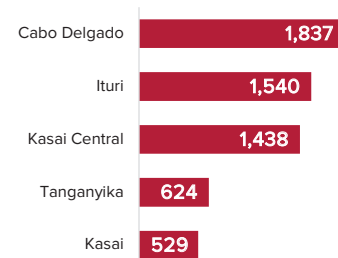
Top 4 incident perpetrators in Democratic Republic of Congo (%)



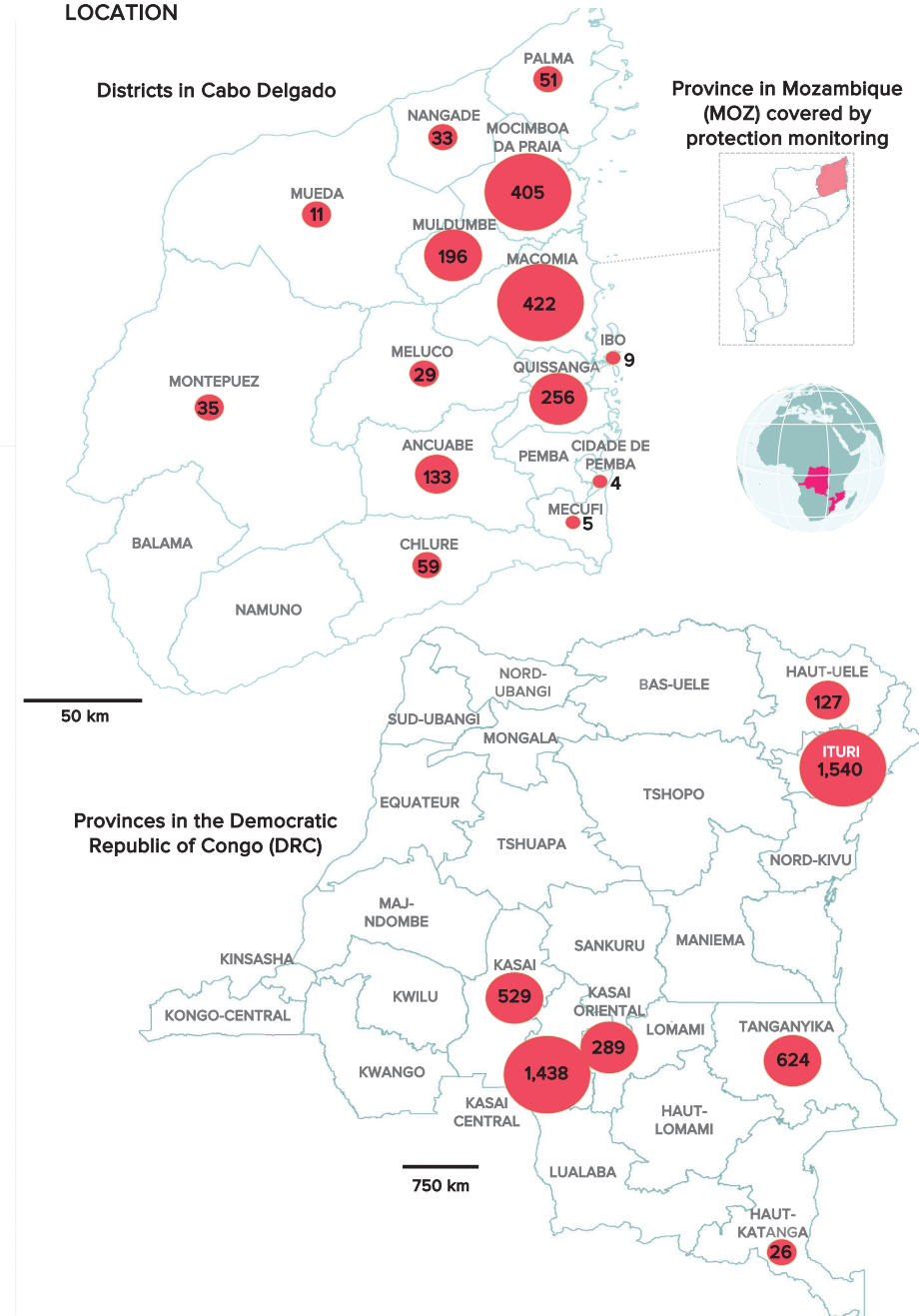
Victims by Population group **



top 5 Provinces affected with protection incidents



MAP SHOWING THE NUMBER OF REPORTED PROTECTION INCIDENTS PER LOCATION



* Number of incidents covered only for those reported in the month of September 2022. The timing of incident occurrence could be September 2022 or before.

** Protection monitoring in Mozambique is done only for IDPs while in DRC it is done for both IDPs and Refugees.

Data sources: UNHCR PRIMES. For more information or to contribute, please contact UNHCR RB SA DIMA (rsarbdima@unhcr.org)

The boundaries and names shown and the designations used on this map do not imply official endorsement or acceptance by the United Nations



Persons of concern in Southern Africa, Data as of 30 September 2022

Country of Asylum	Location*	Self-settled**	Refugee	Asylum-Seeker	Other of Concern	IDP by Conflict	IDP by Natural Disaster	Returned IDP	Refugee Returnee	Statelessness	Host Community	Total
Democratic Republic of the Congo	Other	No	400,832	949	-	4,956,615	187,604	525,512	211	-	-	6,071,723
	IDP Camp	No	-	-	-	381,803	-	-	-	-	-	381,803
	Lusenda	No	26,596	-	-	-	-	-	-	-	-	26,596
	Meri	No	26,397	4	-	-	-	-	-	-	-	26,401
	Inke	No	17,865	1	-	-	-	-	-	-	-	17,866
	Mole	No	10,582	22	-	-	-	-	-	-	-	10,604
	Bili	No	10,242	-	-	-	-	-	-	-	-	10,242
	Boyabu	No	9,422	-	-	-	-	-	-	-	-	9,422
	Biringi	No	8,172	12	-	-	-	-	-	-	-	8,184
	Mulongwe	No	7,435	-	-	-	-	-	-	-	-	7,435
	Bele	No	3,339	303	-	-	-	-	-	-	-	3,642
Mozambique	Mboti	No	630	-	-	-	-	-	-	-	-	630
	Subtotal	-	521,512	1,291	-	5,338,418	187,604	525,512	211	-	-	6,574,548
	Other	No	2,032	18,690	75	946,508	129,327	-	-	-	-	1,096,632
	Maratane Camp	No	2,899	6,039	463	-	-	-	-	-	-	9,401
	Subtotal	-	4,931	24,729	538	946,508	129,327	-	-	-	-	1,106,033
	Other	No	35,701	9,232	10,122	134,430	170,000	-	-	-	-	359,485
	Site du 15 Avril	No	5,582	316	134	-	-	-	-	-	-	6,032
	Site de Bouemba	No	-	4,214	6	-	-	-	-	-	-	4,220
	Subtotal	-	41,283	13,762	10,262	134,430	170,000	-	-	-	-	369,737
	Unknown	Yes	75,033	165,115	-	-	-	-	-	-	-	240,148
	Subtotal	-	75,033	165,115	-	-	-	-	-	-	-	240,148
South Africa	Meheba	No	24,822	485	9,553	-	-	-	-	-	-	34,860
	Mayukwayukwa	No	14,160	14	6,696	-	-	-	-	-	-	20,870
	Other	No	11,156	3,071	769	-	-	-	-	-	-	14,996
	Unknown	Yes	5,600	-	6,804	-	-	-	-	-	-	12,404
	Mantapala	No	11,243	245	-	-	-	-	-	-	-	11,488
	Subtotal	-	66,981	3,815	23,822	-	-	-	-	-	-	94,618
	Other	No	783	28	89	-	41,535	-	-	-	-	42,435
	Tongogara	No	9,356	5,257	833	-	-	-	-	-	-	15,446
	Unknown	Yes	-	6,546	-	-	-	-	-	-	-	6,546
	Subtotal	-	10,139	11,831	922	-	41,535	-	-	-	-	64,427
	Dzaleka	No	32,988	23,256	242	-	-	-	-	-	-	56,486
Malawi	Subtotal	-	32,988	23,256	242	-	-	-	-	-	-	56,486
	Unknown	Yes	17,393	30,024	141	-	-	-	-	-	-	47,558
	Lovua Settlement	No	6,374	-	-	-	-	-	-	-	-	6,374
	Other	No	1,711	258	61	-	-	-	-	-	-	2,030
	Subtotal	-	25,478	30,282	202	-	-	-	-	-	-	55,962
	Osire	No	3,872	1,381	38	-	-	-	-	-	-	5,291
	Other	No	595	1,205	32	-	-	-	-	-	-	1,832
	Subtotal	-	4,467	2,586	70	-	-	-	-	-	-	7,123
	Other	No	1,088	934	14	-	-	-	-	-	-	2,036
	Subtotal	-	1,088	934	14	-	-	-	-	-	-	2,036
	Dukwe	No	549	8	27	-	-	-	-	-	-	584
Botswana	Other	No	199	84	45	-	-	-	-	-	-	328
	Subtotal	-	748	92	72	-	-	-	-	-	-	912
	Other	No	251	274	6	-	-	-	-	-	-	531
	Subtotal	-	251	274	6	-	-	-	-	-	-	531
	Other	No	188	115	15	-	-	-	-	-	-	318
	Subtotal	-	188	115	15	-	-	-	-	-	-	318
	Other	No	21	6	-	-	-	-	-	-	-	27
	Subtotal	-	21	6	-	-	-	-	-	-	-	27
	Other	No	11	2	-	-	-	-	-	-	-	13
	Subtotal	-	11	2	-	-	-	-	-	-	-	13
	Total	-	785,119	278,090	36,165	6,419,356	528,466	525,512	211	-	-	8,572,919

Notes: *'Other' in the location refers to any known location other than camp or settlement sites, covering both urban and rural areas; **self-settled refers to the individuals without available information such as their names and locations, and their locations are categorised to be 'unknown'; those by location in Congo, Democratic Republic of the Congo and Zimbabwe could be different from the numbers operation report due to inconsistency in proGres v4.

Regional protection monitoring harmonization outcomes

In line with the outcomes of the Regional IDP Stocktaking held on 25 February 2022, the Regional Bureau for Southern Africa undertook an ambitious project to harmonize the protection monitoring activities conducted in the region. The envisioned regional harmonization aims to enable an environment that increases persons we serve empowerment, inclusion, and protection while strengthening accountability and efficiency in humanitarian and development programs. The regional protection monitoring harmonization focuses to:

- **Set common definitions of the incident, minimum standards, and objectives of the protection monitoring.**
- **Standardize questionnaires to collect data but be flexible enough for field operations to add and amend questions depending on the context and needs.**
- **Develop reporting/product templates with a standard design and branding for UNHCR.**
- **Develop a narrative to explain externally why and how UNHCR does protection monitoring and identify common indicators for regional reporting.**

The regional protection monitoring harmonization established a regional incident typology framework to efficiently analyze the regional protection monitoring data. To this extent, 7,503 protection incidents with 106,673 victims were reported in September 2022 in both countries, which affected 10 provinces in the Democratic Republic of Congo (DRC) and 1 province in Mozambique. It is worth mentioning that of the protection incidents reported in September 2022, some occurred in the same month, and some occurred before September 2022.

The top 5 protection incidents reported in the region are homicide (30 per cent), assault and battery (29 percent), extortion of property (16 per cent), destruction of properties (13 per cent), and looting (12 per cent). Also, those protection incidents affected 99.88 percent of Internally displaced persons (IDPs), 0.11 percent of refugees, and 0.01 per cent of asylum-seekers. The protection incidents affected more males (53 per cent) than females (47 per cent), and the protection incidents affected the age group (0 to 17), children, who represent 44 percent of all victims reported in September 2022. In addition, the perpetrators of those protection incidents are armed groups (46 per cent), host communities (26 per cent), others (23 per cent), and unknown (5 per cent). It is worth mentioning that 1.3 percent of the regional population, compared to September 2022 regional data, was affected by the protection incidents reported in September 2022.

In conclusion, the protection incidents evidenced in the analysis partially overview the situation in both countries where the data were collected. The number of protection incidents and victims is higher than what is represented in this report for September 2022. In DRC, the new protection monitoring platform still needs to be fully deployed countrywide, and efforts are underway to have data that will reflect the real situation. In Mozambique, the data reported in this report concerns only one province, Cabo Delgado, where the protection monitoring is implemented. Efforts are also underway to have functioning protection monitoring in the rest of the affected provinces.

Population Data Analysis

Regional Bureau for Southern Africa

September 2022



United Nations High Commissioner for Refugees

UNHCR, Regional Bureau of Southern Africa

Cover Photo: Democratic Republic of Congo. Burundian refugees are voluntarily repatriated. © UNHCR/Antonia Vadala

Contact

UNHCR RBSA DIMA, rsarb@unhcr.org;

LINKS: [UNHCR RBSA data portal](#) – [Facebook](#) – [Twitter](#) – [Instagram](#)