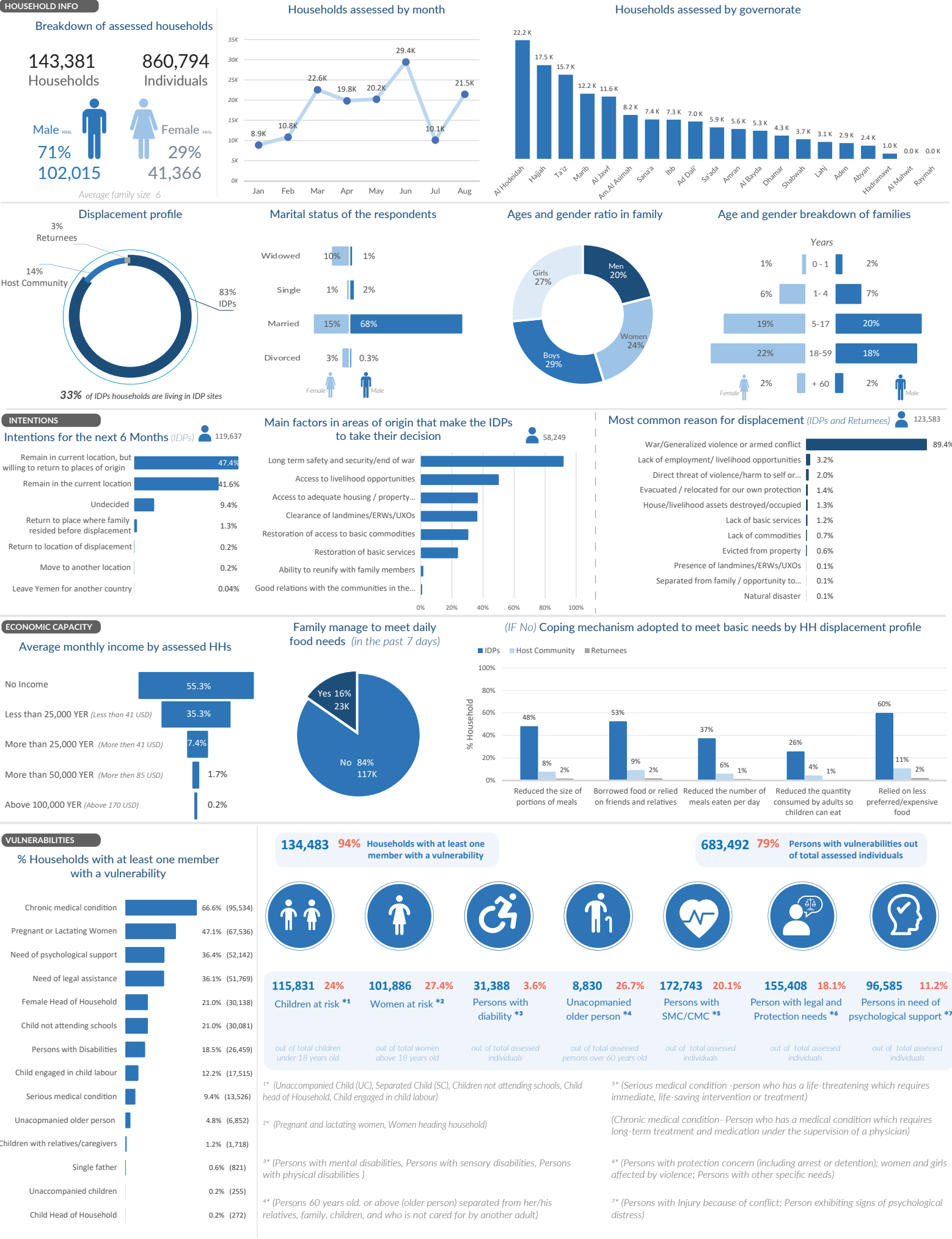
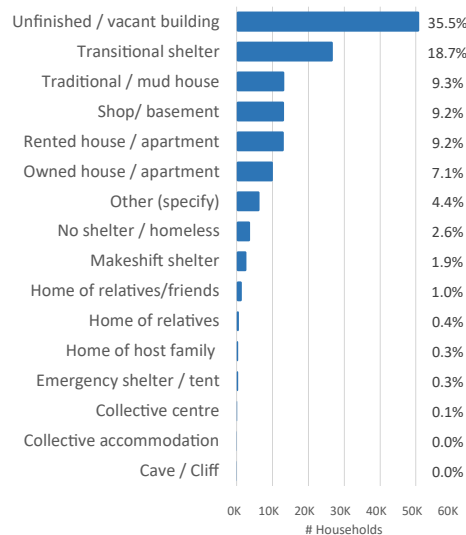


UNHCR through its partners conducted socio-economic assessment targeting affected populations in areas of displacement. The collected data is analysed to inform interventions and eligibility for assistance.



SHELTER & HOUSING, LAND and PROPERTY (HLP)

% Households by type of shelter



36%
51,393

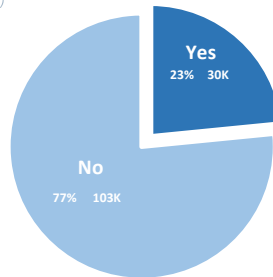
Households who live in rented houses/apartments/ others and pay rent



6%
4,919

Households that do not reside in an owned, rented home, or shop/basement, and make monetary or in-kind payments for their current shelter

HHs received notification of eviction from their current shelter (last 6 months)



Household per shelter condition

Type of Shelter	Good	Average	Poor	Destroyed
Cave / Cliff	1.6%	17.7%	61.3%	19.4%
Collective accommodation	6.8%	36.4%	55.6%	1.2%
Collective centre	18.9%	43.2%	37.8%	0.0%
Emergency shelter / tent	0.9%	11.0%	81.4%	6.7%
Home of host family	8.6%	42.6%	48.2%	0.5%
Home of relatives	15.1%	45.7%	38.7%	0.5%
Home of relatives/friends	17.0%	51.4%	30.9%	0.8%
Makeshift shelter	0.5%	12.2%	79.8%	7.5%
Other	18.8%	30.4%	49.3%	1.5%
Owned house / apartment	23.7%	49.6%	26.0%	0.7%
Rented house / apartment	19.5%	42.9%	37.0%	0.7%
Shop/ basement	1.8%	19.9%	76.5%	1.8%
Traditional / mud house	1.6%	38.7%	57.7%	2.0%
Transitional shelter	5.1%	56.5%	36.3%	2.2%
Unfinished / vacant building	0.7%	23.8%	71.9%	3.6%

CIVIL REGISTRATION & DOCUMENTATION

Birth Certificate



58%
73,798

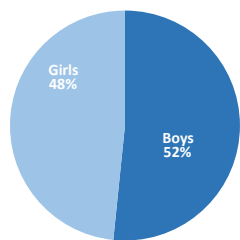
Households with at least one child not registered with a birth certificate out of overall assessed households



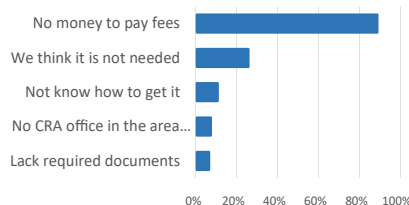
49%
238,071

Children (ages 0-18) not registered with a birth certificate out of overall children

Children without a birth certificate



Reasons for not getting birth certificate



National Identity Card



69%
98,688

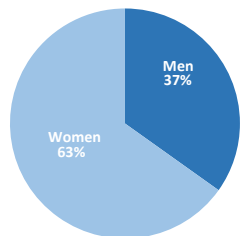
Households with at least one member did not obtain a national identity card out of overall assessed households



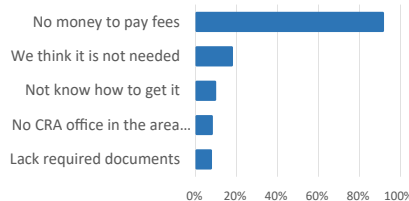
36%
135,943

Family members (age over 18) lacking a national identity card out of overall adults

Adult lack the national ID card



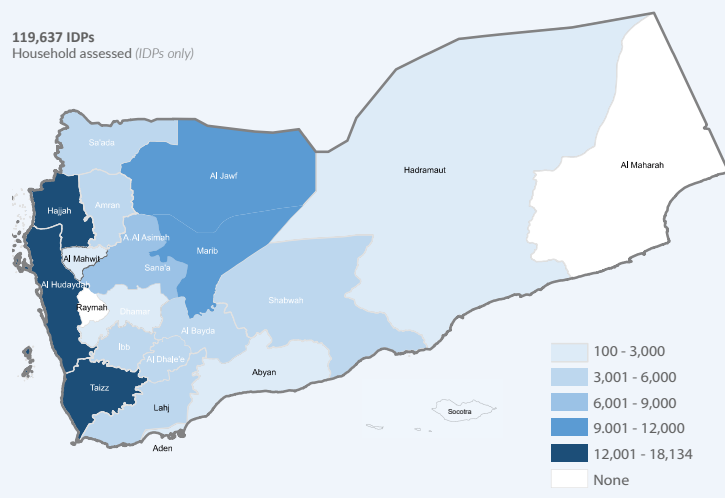
Reasons for not getting national ID card



IDPs Movement

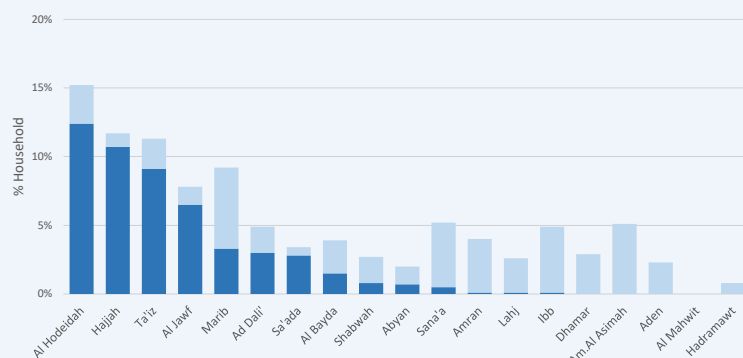
IDPs: Governorate of Displacement

119,637 IDPs
Household assessed (IDPs only)



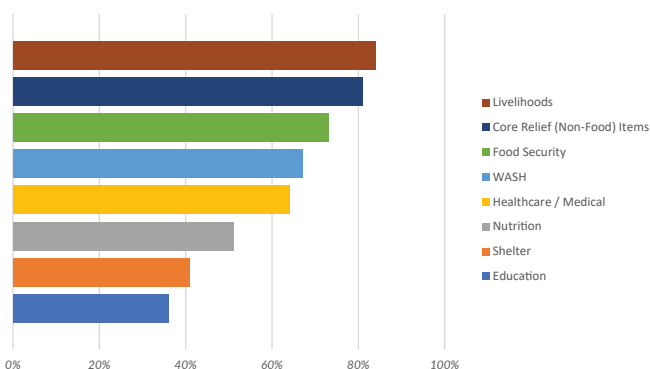
Displacement within / outside governorate

52% **61,781** Household displaced **within** governorate
48% **57,856** Household displaced **outside** governorate



REFERRALS

Households recommended for multi-cluster referral



Year of displacement for assessed IDP (IDPs only)

