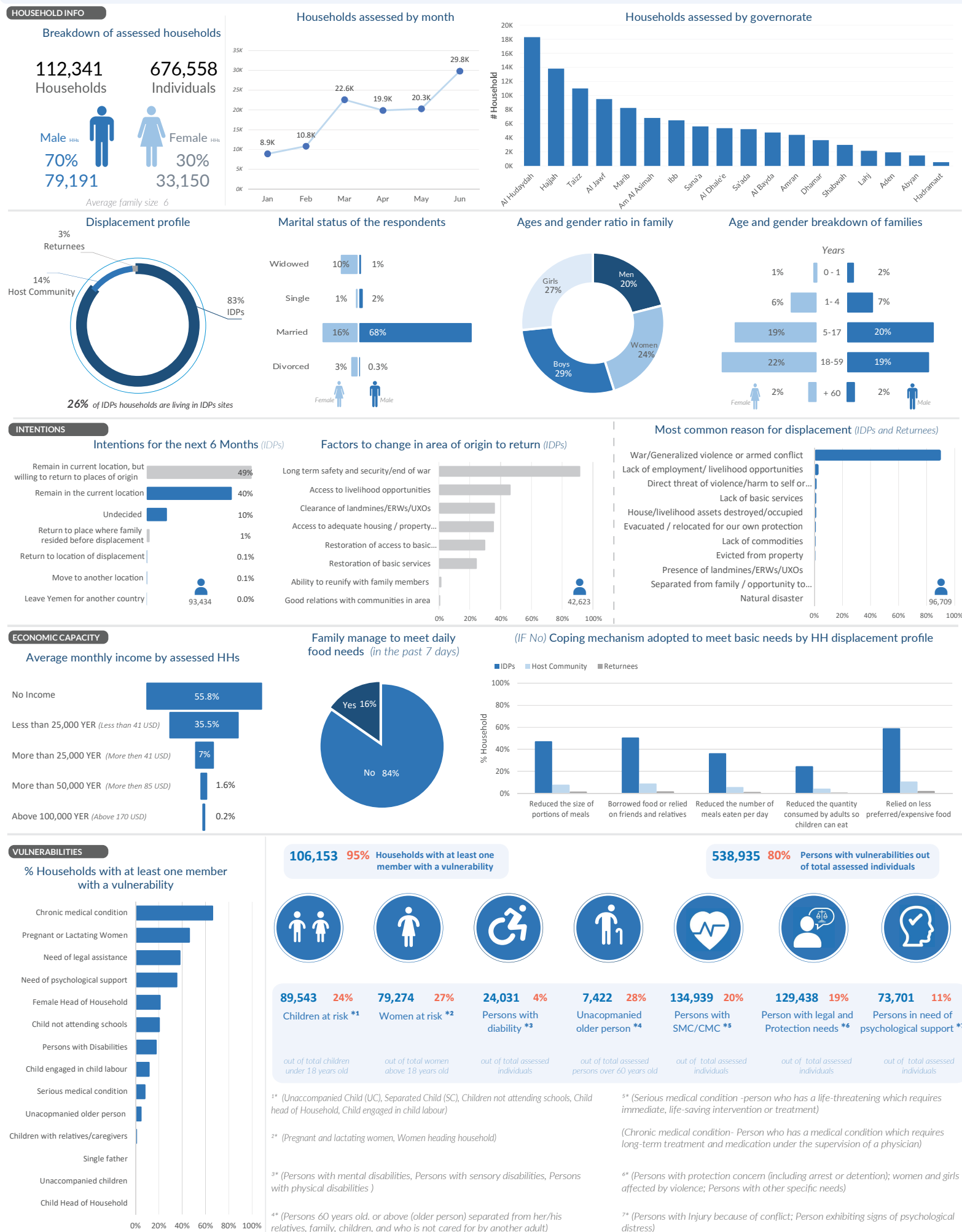
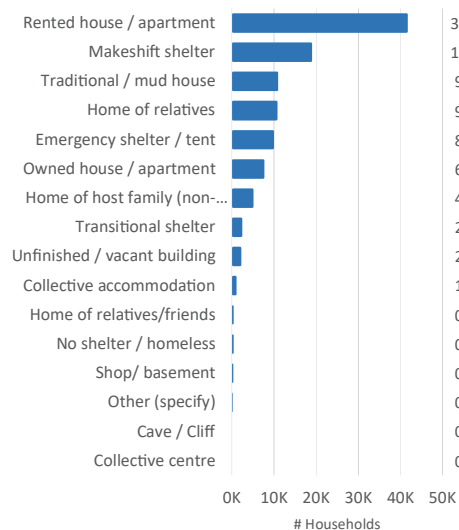


UNHCR through its partners conducted socio-economic assessment targeting affected populations in areas of displacement. The collected data is analysed to inform interventions and eligibility for assistance.



SHELTER & HOUSING, LAND and PROPERTY (HLP)

% Households by type of shelter



37%
42,027

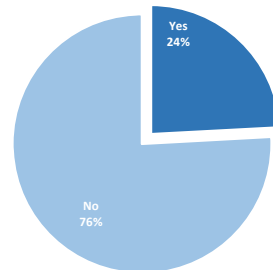
Households who live in rented houses/apartments/ others and pay rent



6%
3,834

Households that do not reside in an owned, rented home, or shop/basement, and make monetary or in-kind payments for their current shelter

HHs received notification of eviction from their current shelter (last 6 months)



Household per shelter condition

Type of Shelter	Good	Average	Poor	Destroyed
Cave / Cliff	2.2%	15.2%	67.4%	15.2%
Collective accommodation	7.0%	35.6%	56.8%	0.6%
Collective centre	18.4%	44.7%	36.8%	0.0%
Emergency shelter / tent	1.2%	11.8%	80.6%	6.3%
Home of host family	9.4%	43.1%	47.2%	0.4%
Home of relatives	16.3%	46.5%	36.8%	0.5%
Home of relatives/friends	17.0%	51.4%	30.9%	0.7%
Makeshift shelter	0.7%	14.3%	78.7%	6.4%
Other	18.8%	30.4%	49.3%	1.4%
Owned house / apartment	25.6%	50.5%	23.5%	0.4%
Rented house / apartment	20.9%	43.0%	35.4%	0.6%
Shop/ basement	1.5%	20.1%	76.5%	1.8%
Traditional / mud house	1.7%	40.0%	57.0%	1.3%
Transitional shelter	6.2%	59.8%	33.0%	1.0%
Unfinished / vacant building	0.7%	25.9%	69.9%	3.4%

CIVIL REGISTRATION & DOCUMENTATION

Birth Certificate



58%
58,675

Households with at least one child not registered with a birth certificate out of overall assessed households

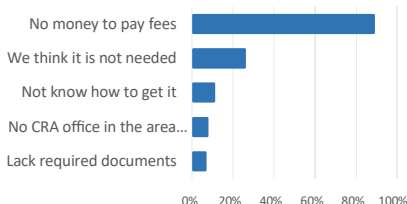
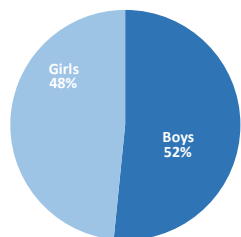


50%
189,767

Children (ages 0-18) not registered with a birth certificate out of overall children

Children without a birth certificate

Reasons for not getting birth certificate



National Identity Card



68%
76,514

Households with at least one member did not obtain a national identity card out of overall assessed households

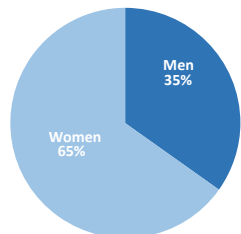


35%
106,492

Family members (age over 18) lacking a national identity card out of overall adults

Adult lack the national ID card

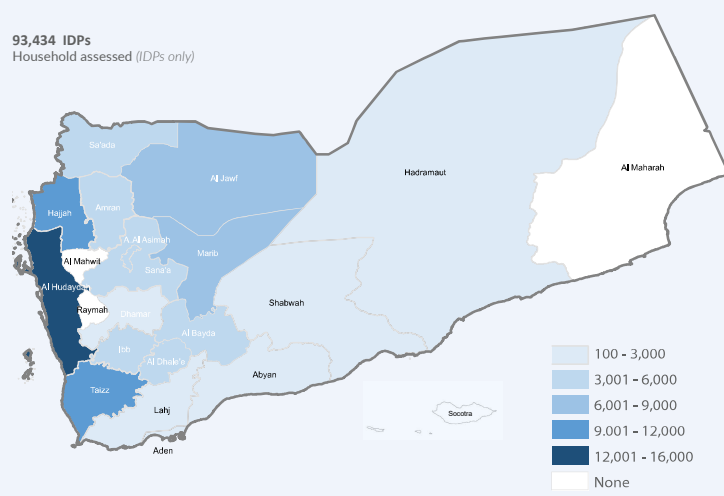
Reasons for not getting national ID card



IDPs Movement

IDPs: Governorate of Displacement

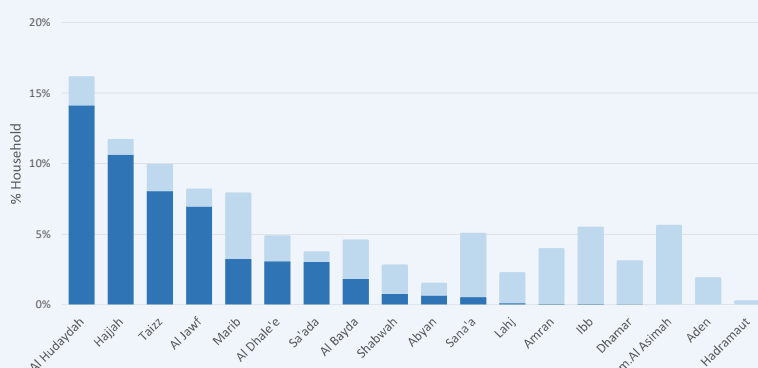
93,434 IDPs
Household assessed (IDPs only)



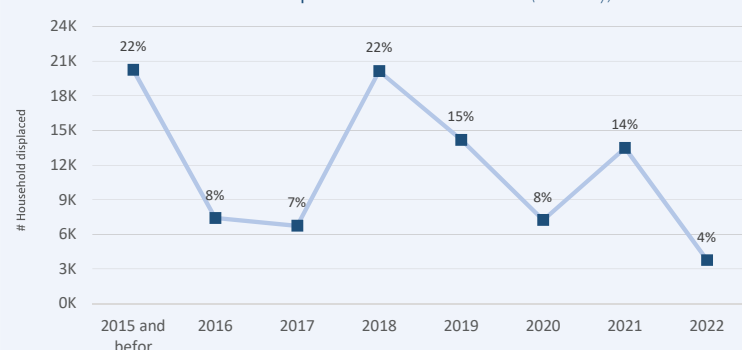
Displacement within / outside governorate

53% 49,528
Household displaced **within** governorate

47% 43,906
Household displaced **outside** governorate



Year of displacement for assessed IDP (IDPs only)



REFERRALS

