



## 6,037

South Sudanese refugee returnees have been reported to have returned in May 2022.

An Accumulated number of **579,698** refugee returnees have been reported since the signing of the revitalized peace agreement in October 2018 to Date.

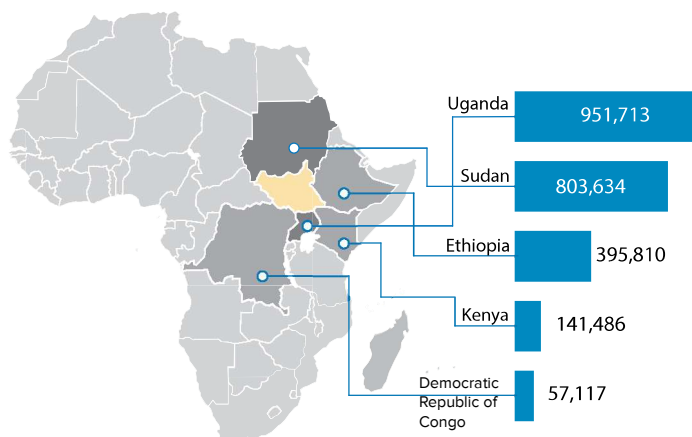
UNHCR and South Sudan's Relief and Rehabilitation Commission (RRC) are pleased to share this monthly update on spontaneous South Sudanese refugee returnees.

The dashboard highlights cross-border refugee movements between neighboring countries and South Sudan during the month May 2022.

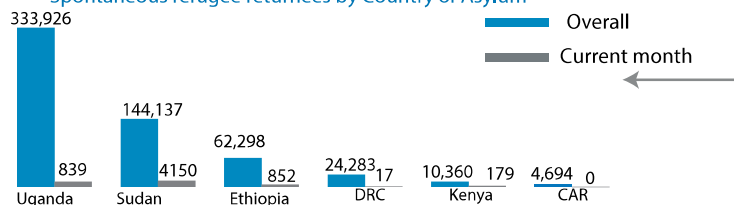


## 2.3 Million refugees

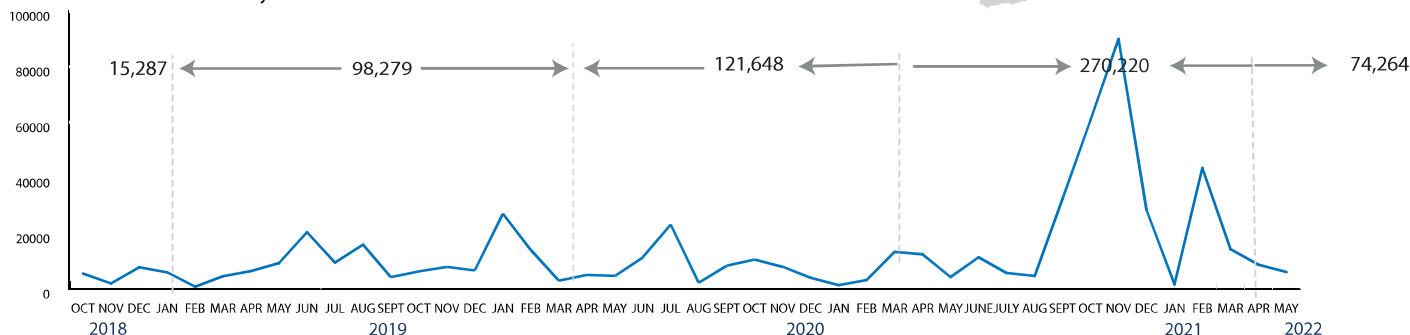
South Sudanese Refugees in the region as of 30 April 2022



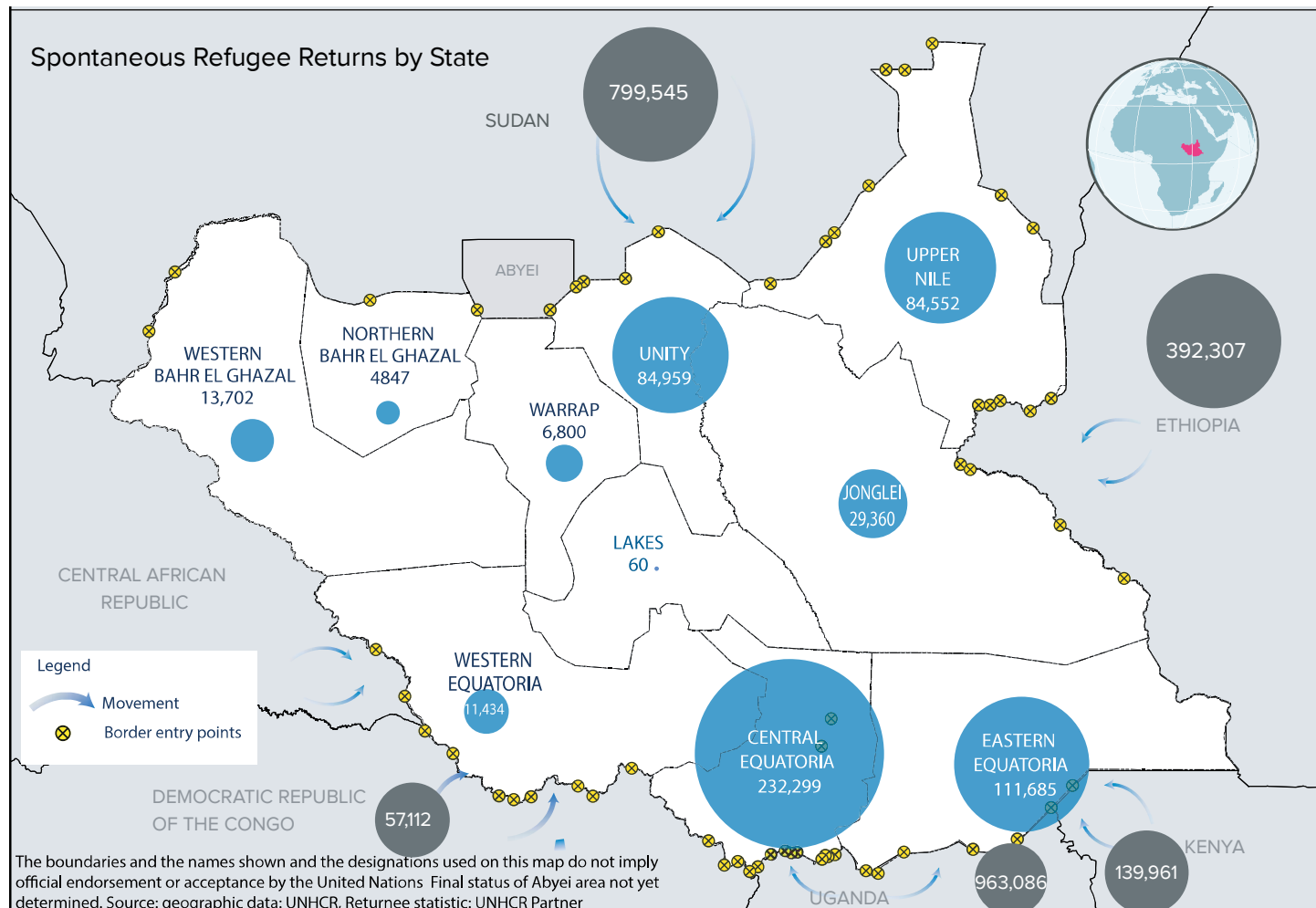
Spontaneous refugee returnees by Country of Asylum



Returns from Oct 2018 - May 2022



Spontaneous Refugee Returns by State



The boundaries and the names shown and the designations used on this map do not imply official endorsement or acceptance by the United Nations. Final status of Abyei area not yet determined. Source: geographic data: UNHCR, Returnee statistic: UNHCR Partner

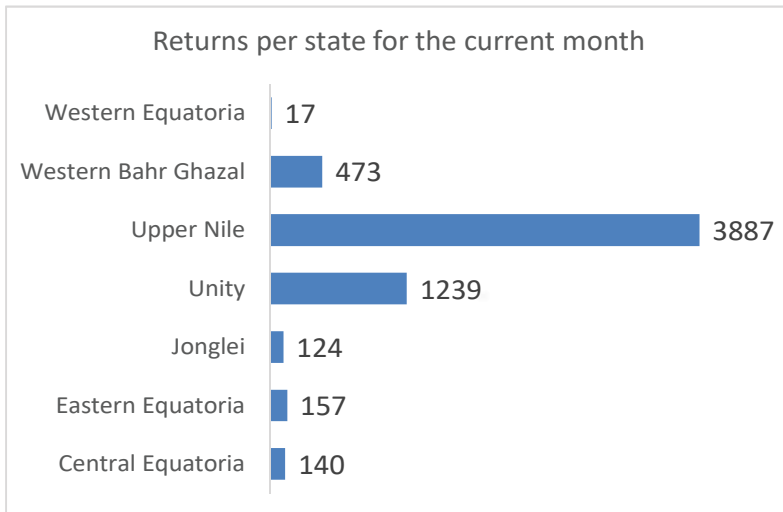
## Key highlights on refugee returns and cross border movements

Return of 6,037 South Sudanese refugees have been verified and reported in the month of May 2022. This is a slight decline as compared to the returns in the month of April 2022. The decline was attributed to the re-opening of schools as the academic years has begun and there is no up and down movement as children are in schools in the neighboring countries; and also due to onset of rain season as people are busy cultivating.

Information on returnees was collected in 52 Focus Group Discussions and 62 key informant interviews conducted during May in high areas of return in the following states: Central Equatoria, Eastern Equatoria, Western Equatoria, Unity, Upper Nile, Jonglei, Upper Nile state and Western Bahr el Ghazal States. Most of the verified returnees to the seven States were mostly from Sudan (69%), Ethiopia (14%), Uganda (14%) and less than 5% are from DR Congo and Kenya. The majority of the returnees from Sudan went to Upper Nile and Northern unity States while those from Uganda went to Unity and Eastern Equatoria State.

State with high return in the month of May 2022 as indicated below in the chart

### Return per States for the current month



Most of the returns for the month of May 2022 were from Sudan through Renk County of Upper Nile State and Tonga border crossing point in Unity state while those from Uganda crossed through Kajo-keji border point.

## Reason for returning to South Sudan

The most cited reasons for returning to South Sudan from Country of Asylum included:-

- Improvement of the security situation in South Sudan (46%).
- Reuniting with the family members (37%)
- Check and attend to housing, land and property (17%).

## Reason for leaving country of asylum

- Lack of access to basic services (40%)..
- Lack of employment and livelihood opportunities (36%).
- Insecurity from the country of asylum ( 13%).

## Key protection concerns at border points and in areas of return (as reported by returned refugees) are:

- Lack of basic services (health services, clean water, and education).
- Looting & confiscation of returnee's property by Sudanese authorities on their way back to South Sudan.
- Lack of access to shelter, food, agricultural tools and None Food Items (NFIs)
- Clashes between pastoralist and host communities in Magwi county which led to displacement of scores of population and death of 22 people.

## Methodology

The Relief and Rehabilitation Commission (RRC) in coordination with UNHCR and partners monitor cross-border movements at 37 border entry points and in areas of high return. Information is collected through interviews with the returnees at border point and community based/-house-hold-level assessments regularly in areas of high return. This information is then triangulated with data collected from focus group discussions, key informant interviews, and meetings with local authorities and faith-based leaders, law enforcement agents, and immigration officers in the border entry points and areas of returns.

## Contributing partners



## With support from

Canada



From the People of Japan



LUXEMBOURG  
AID & DEVELOPMENT



Schweizerische Eidgenossenschaft  
Confédération suisse  
Confederazione Svizzera  
Confederaziun svizra  
Swiss Agency for Development and Cooperation SDC

