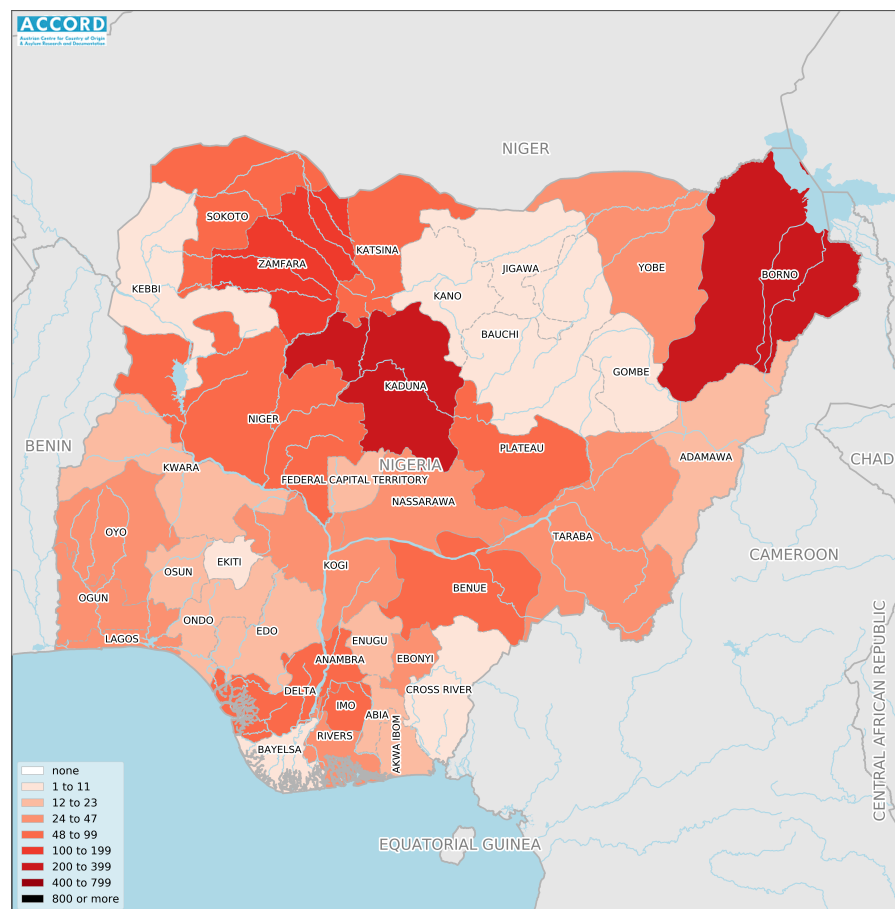


# NIGERIA, YEAR 2021:

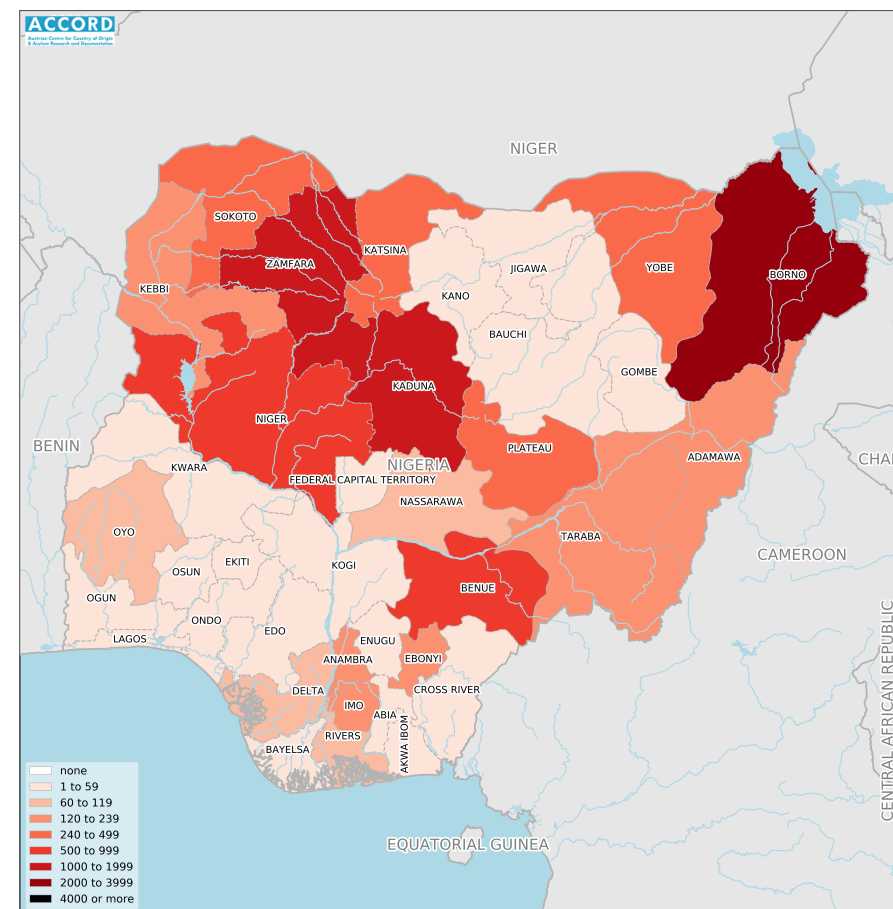
Update on incidents according to the Armed Conflict Location & Event Data Project (ACLED)

compiled by ACCORD, 30 May 2022

## Number of reported incidents with at least one fatality



## Number of reported fatalities



National borders: [GADM, 6 May 2018a](#); administrative divisions: [GADM, 6 May 2018b](#); incident data: [ACLED, 20 May 2022](#); coastlines and inland waters: [Smith and Wessel, 1 May 2015](#)

## Contents

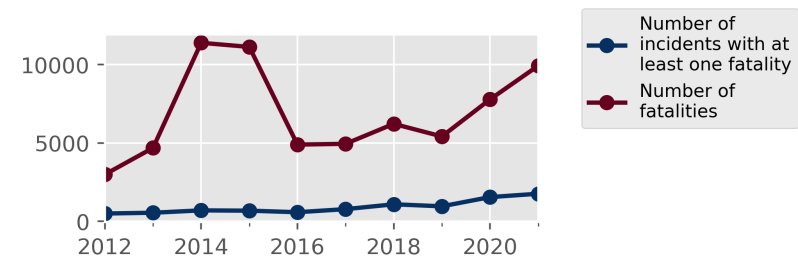
Number of reported fatalities	1
Number of reported incidents with at least one fatality	1
Conflict incidents by category	2
Development of conflict incidents from 2012 to 2021	2
Methodology	3
Conflict incidents per province	4
Localization of conflict incidents	4
Disclaimer	9

## Conflict incidents by category

Category	Number of incidents	Number of incidents with at least one fatality	Number of fatalities
Violence against civilians	1387	767	3547
Battles	1007	726	4865
Protests	723	10	12
Riots	285	106	210
Explosions / Remote violence	192	152	1288
Strategic developments	140	2	4
Total	3734	1763	9926

This table is based on data from ACLED (datasets used: [ACLED](#), 20 May 2022).

## Development of conflict incidents from 2012 to 2021



This graph is based on data from ACLED (datasets used: [ACLED](#), 20 May 2022).

## Methodology

The data used in this report was collected by the Armed Conflict Location & Event Data Project (ACLED). ACLED collects data on reported conflict events in selected African and Asian countries, Nigeria being among them. ACLED researchers collect event data from a variety of sources and code them by date, location, agent, and event type.

Most of the data collected by ACLED is gathered based on publicly available, secondary reports. It may therefore underestimate the volume of events. Fatality data particularly is vulnerable to bias and inaccurate reporting, and ACLED states to use the most conservative estimate available. ACLED uses the reports' context to estimate fatalities for events with reported fatalities for which the exact number is unknown ("3" or "10" for plural fatalities, depending on the context; "100" if "hundreds" are mentioned, etc.). For further details on ACLED and for the full data, see [www.acleddata.com](http://www.acleddata.com) and [Raleigh; Linke; Hegre, and Karlsen, 2010](#).

Based on this data, the Austrian Centre for Country of Origin & Asylum Research and Documentation (ACCORD) compiles updates on conflict incidents and publishes them on [ecoi.net](http://ecoi.net) to offer another access point to the ACLED datasets.

It is advised to employ extreme caution when using fatality numbers.

Assessments of the security situation should not be based solely on quantitative analysis of event data.

Geographic map data is primarily based on GADM, complemented with other sources if necessary. Incidents are mapped to GADM provinces using the provinces in ACLED data. Province names and borders may differ between ACLED and GADM. Incidents that could not be located are ignored. The numbers included in this overview might therefore differ from the original ACLED data. ACLED uses varying degrees of geographic precision for the individual incidents, depending

on what level of detail is reported. Thus, towns may represent the wider region in which an incident occurred, or the provincial capital may be used if only the province is known. Erroneous location data, especially due to identical place names, cannot be fully excluded.

Incidents comprise the following categories: battles, violence against civilians, remote violence, riots/protests, non-violent strategic activities. For details on these categories, please see

- ACLED – Armed Conflict Location & Event Data Project: Armed Conflict Location and Event Data Project (ACLED) User Quick Guide, April 2019  
[https://acleddata.com/acledatanew/wp-content/uploads/2021/11/ACLED\\_General-User-Guide\\_April-2019.pdf](https://acleddata.com/acledatanew/wp-content/uploads/2021/11/ACLED_General-User-Guide_April-2019.pdf)
- ACLED – Armed Conflict Location & Event Data Project: FAQs: ACLED Fatality Methodology, February 2020  
[https://acleddata.com/acledatanew/wp-content/uploads/2021/11/ACLED\\_FAQs-Fatalities-Methodology\\_v1\\_February-2020.pdf](https://acleddata.com/acledatanew/wp-content/uploads/2021/11/ACLED_FAQs-Fatalities-Methodology_v1_February-2020.pdf)
- ACLED – Armed Conflict Location & Event Data Project: Armed Conflict Location and Event Data Project (ACLED) Codebook, January 2021  
[https://acleddata.com/acledatanew/wp-content/uploads/2021/11/ACLED\\_Codebook\\_v1\\_January-2021.pdf](https://acleddata.com/acledatanew/wp-content/uploads/2021/11/ACLED_Codebook_v1_January-2021.pdf)

## Conflict incidents per province

Province	Number of incidents	Number of incidents with fatalities	Number of fatalities
Abia	48	15	37
Adamawa	39	21	159
Akwa Ibom	46	17	39
Anambra	124	59	167
Bauchi	31	6	9
Bayelsa	47	5	8
Benue	120	88	566
Borno	444	306	2813
Cross River	46	7	17
Delta	126	49	96
Ebonyi	54	34	172
Edo	88	13	31
Ekiti	44	4	7
Enugu	59	19	50
Federal Capital Territory	141	16	22
Gombe	10	6	27
Imo	152	73	223
Jigawa	16	7	8
Kaduna	435	290	1211
Kano	27	3	4

Province	Number of incidents	Number of incidents with fatalities	Number of fatalities
Katsina	141	79	397
Kebbi	11	7	122
Kogi	67	25	56
Kwara	63	17	27
Lagos	113	31	42
Nassarawa	48	25	65
Niger	180	95	786
Ogun	114	24	44
Ondo	73	19	34
Osun	83	20	40
Oyo	130	39	82
Plateau	99	64	334
Rivers	91	25	64
Sokoto	93	62	435
Taraba	65	37	134
Yobe	61	36	240
Zamfara	205	120	1358

## Localization of conflict incidents

**Note:** The following list is an overview of the incident data included in the ACLED dataset. More details are available in the actual dataset (date, location data, event type, involved actors, information sources, etc.). The data's precision varies among the incidents: a town may represent a region, or the provincial capital may be used if the precise location of an incident is unknown. In the following list, the names of

event locations are taken from ACLED, while the administrative region names are taken from GADM data which serves as the basis for the maps above.

In **Abia**, 48 incidents killing 37 people were reported. The following locations were among the affected: **Aba, Ameke-Abiriba, Arochukwu, Bende, Nkumekpo Usaka, Ohafia, Omoba, Onicha Ngwa, Onuaku Uturu, Osioma, Umuagu, Umuahia, Umudike, Uzuakoli.**

In **Adamawa**, 39 incidents killing 159 people were reported. The following locations were among the affected: **Bolki, Dabna, Damai, Fufore, Garaha, Giwano, Guyuk, Hong, Jimeta, Karewa, Kojoli, Kopre, Kwalamba, Lamurde, Madagali, Maiha, Mayo Belwa, Mbamba, Michika, Ngurore, Numan, Sabongari Chambula, Song, Toungo, Yola.**

In **Akwa Ibom**, 46 incidents killing 39 people were reported. The following locations were among the affected: **Abak, Eket, Ekparakwa, Enwang, Eyofin, Ibaka, Ibeno, Ibiaku Ntok Okpo, Idu, Iko, Ikot Akpaden, Ikot Ebak, Ikot Ekpene, Ikot Ntuen Ukana, Ikot Ukpang Edem, Ikpe Anang, Itu, Nung Ukana, Odoro Ikpe, Odoro-Ikpe, Opobo, Oron, Urua Inyang, Utu Etim Ekpo, Uyo.**

In **Anambra**, 124 incidents killing 167 people were reported. The following locations were among the affected: **Abagana, Abatete, Aguata, Aguleri, Agulu, Ajalli, Amansee, Amawbia, Anaku, Atani, Awka, Awkuzu, Azia, Ekwulobia, Ekwusigo, Enugu Umunze, Enugu-Ukwu, Fegge, Ifite-Ukpo, Igbariam, Igbo-Ukwu, Ihiala, Isuofia, Lilu, Nanka, Neni, Nkpor, Nnewi, Nnobi, Nteje, Oba, Obosi, Ogboji, Ogidi, Oguaniocho, Ojoto, Oko, Omogho, Onitsha, Orifite, Orkija, Otolo, Otuocha, Ozubulu, Ukpo-Akpu, Uli, Umuleri, Umuoja-Obosi, Umuoji.**

In **Bauchi**, 31 incidents killing 9 people were reported. The following locations were among the affected: **Bauchi, Bayara, Bogoro, Bununu, Gamawa, Ganjuwa, Nabordo, Sade, Tafawa-Balewa, Takandan Giwa, Tilden Fulani.**

In **Bayelsa**, 47 incidents killing 8 people were reported. The following locations were among the affected: **Akassa, Amabilou, Amassoma, Azuzuama, Biogbolo, Biseni, Brass, Ekeremor, Kolo Creek, Koluama, Nembe, Ogbia, Ogu, Olugbobiri, Oporoma, Otuaka, Otuasiga, Peremabiri, Sagbama, Yenagoa.**

In **Benue**, 120 incidents killing 566 people were reported. The following locations were among the affected: **Abaji, Adagbo, Agila, Aila, Alabar, Aliade, Anyiin, Apa-Agila, Bagagi, Eke, Gbajimba, Gboko, Igumale, Ikobi, Ikpayongo, Katsina-Ala, Korinya, Lessel, Makurdi, Mbabai, Mbacher, Mbalagh, Mbalom, Naka, Odugbeho, Oju, Otukpa, Oturkpo, Sankera, Sengev, Tor Donga, Tse-Agberagba, Tsenom, Ugba, Ugbokpo, Utonkon, Yandev.**

In **Borno**, 444 incidents killing 2813 people were reported. The following locations were among the affected: **Abadam, Adamari, Agapalawa, Ajiri, Ala, Alagarno, Alarge, Ali-Jilamari, Arege, Asaga, Ashigashiya, Askira, Aulari, Auno, Azare, Baga, Bama, Banki, Benisheikh, Beta, Bindiri, Biu, Bula Njimbam, Bulama-Isa, Chibok, Cross Kauwa, Damasak, Damboa, Dikwa, Dille, Doksa, Duguri, Duji, Dunamari, Dusula, Dushman, Gajiram, Gambori, Gamboru, Garin Kuturu, Gasari, Gashigar, Gorigi, Gubio, Gudumbali, Gujeri, Gumsuri, Gur, Gwoza, Jaje, Jakana, Kafa, Kamagunma, Kamuya, Karetu, Kauji Kura, Kaumutuyahi, Kawuri, Kilangar, Kirawa, Kirta Wulgo, Kolori, Kombi, Kondori, Konduga, Kontori, Kote, Kotembe, Kuda, Kukawa, Kumshe, Kusuma, Kwada, Lambua, Lassa, Luma, Mafa, Magumeri, Maiduguri, Mainok, Mairami, Malam Fatori, Mammanti, Mandafuma, Mandaragirau, Marte, Mauli, Molai, Monguno, Ngala, Ngamdu, Ngoshe, Nguma, Ngurosoye, Ngwom, Njimitilo, Pulka, Rann, Sabon Gari, Sabon Tumbun, Sambisa Forest Reserve, Shani, Shikarkir, Talala, Tumbun Gini, Tungushe, Wovi, Wulgo, Wultihya, Yamtaji, Zari.**

In **Cross River**, 46 incidents killing 17 people were reported. The following locations were among the affected: **Anantigha, Bakassi, Biakpan, Boji, Calabar, Esuk Atu, Ikom, Ikot Nakanda, Obubra, Odukpani, Ogoja, Okpoma, Ugep.**

In **Delta**, 126 incidents killing 96 people were reported. The following locations were among the affected: Abo Ogwashi-Uku, Aboh, Abraka, Afiesere, Agbarho, Agbor, Akwukwu-Igbo, Aladja, Amukpe, Asaba, Ashaka, Effurun, Ekrebuo Isiokolo, Ekuma-Abavo, Ewreni, Forcados, Ibusa, Igbide, Illah, Irri, Isoko Camps, Iwhreka, Jeddo, Kokori, Nsukwa, Obiaruku Quarters, Obinomba, Obubu, Ogbe-Ijoh, Oghara, Ogwashi-Uku, Okuoike, Okwagbe, Ole, Omadino, Orerokpe, Orhuwhorum, Otor Udu, Otulu, Oviri-Ogor, Oviri-Olomu, Ovwian, Ozoro, Sapele, Tuomor, Ughelli, Umutu, Warri.

In **Ebonyi**, 54 incidents killing 172 people were reported. The following locations were among the affected: Abakaliki, Abba Omega, Afikpo, Akpoha, Amaseri, Ebiaji, Effium, Ekoli, Enyigba, Ezamgbo, Ezillo, Ezza Ohu, Iboko, Isu, Izi, Ngbo, Nwofe, Obiozara, Ochoku, Okposi Achara, Onicha, Onueke, Uburu, Ugbodo, Umuhuali, Unwana.

In **Edo**, 88 incidents killing 31 people were reported. The following locations were among the affected: Afuze, Agbede, Auchu, Benin City, Ehor, Ekehuan, Ekpoma, Ibillo, Idogbo, Igarra, Igbanke, Igieduma, Iguobazuwa, Jattu, Obadan, Obazuwa, Okada, Okomu, Sabon Gida, Ubiaja, Ugbor, Ugbowo, Ugo, Ukhirhi, Uromi.

In **Ekiti**, 44 incidents killing 7 people were reported. The following locations were among the affected: Ado-Ekiti, Erinjiyan, Ewu, Ido Ekiti, Igbemo-Ekiti, Igede-Ekiti, Ijan-Ekiti, Ikere, Ikole, Ilawe, Ilmeso Ekiti, Iloro, Isinbode, Itapaji, Iye, Omuo-Ekiti, Otun.

In **Enugu**, 59 incidents killing 50 people were reported. The following locations were among the affected: Adani, Agbani, Aku, Amagunze, Awgu, Eha Amufu, Eke, Emene, Enugu, Enugu-Ezike, Ezeagu, Ibegwa-Aka, Ikem, Inyi, Mgbowo, Nimbo, Nsukka, Obeagu, Obeagu Ugwuaji, Oruku, Owo, Ozalla, Udi, Umulokpa, Uwani.

In **Federal Capital Territory**, 141 incidents killing 22 people were reported. The following locations were among the affected: Abaji, Abuja, Bwari, Dakwa, Gwagwalada, Gwarinpa, Idu, Jabi, Karu, Kubwa, Kuje, Kwali, Madala, Maitama, Nyanya, Piri, Rubochi, Tunga Maje, Wuse, Yangoji, Yebu, Zuba.

In **Gombe**, 10 incidents killing 27 people were reported. The following locations were among the affected: Billiri, Gombe, Shongom, Tallase.

In **Imo**, 152 incidents killing 223 people were reported. The following locations were among the affected: Aboh, Afozuru, Akabo, Akata, Amaigbo, Amakohia, Amaraka, Amike, Asa, Atta, Awara, Awo-Idemili, Awo-Omamma, Etekuru, Eziana, Eziana Obiato, Iho, Ihube, Isinweke, Izombe, Mbieri, Mbutu, Mgbidi, Ndizuogu, Nekede, Njaba, Nmu Neke, Nnenasa, Ogboko, Oguta, Okigwi, Okporo, Omuma, Orji, Orlu, Oru, Otoko, Owerri, Ubulu Ihejiofo, Umu Elemai, Umu-Eze, Umuagwo, Umuaka, Umueze, Umulogho, Umundugba, Umuoguma, Umuohiagu, Urualla.

In **Jigawa**, 16 incidents killing 8 people were reported. The following locations were among the affected: Auyo, Babura, Birnin Kudu, Dutse, Karkarna, Malummaduri, Marke, Miga, Ringim, Sule Tankarkar, Taura.

In **Kaduna**, 435 incidents killing 1211 people were reported. The following locations were among the affected: Abobo, Afaka, Amfu, Aribi, Baka, Bina, Birnin Gwari, Birnin Yero, Buda, Buruku, Chikun, Daku, Dande, Dogon Dawa, Doka, Dutsen Abba, Fadan Kagoma, Farin-Ruwa, Fatika, Galadimawa, Gidan-Waya, Giwa, Godogodo, Golgofa, Goni Gora, Gora, Goron Dutse, Gwagwada, Gwantu, Hayin Banki, Idasu, Igabi, Ikara, Iri, Iyatawa, Jagindi, Jaji, Jankasa, Jemaa, Jere, Juji, Kachia, Kadage, Kaduna, Kaduna South, Kafanchan, Kagarko, Kajuru, Kakau, Kakuri, Kamaru, Kankomi, Kasuwan Magani, Katari, Kaura, Kauru, Kawo, Kaya, Kerawa, Kibori, Kidandan, Kigudu, Kuduru, Kujama, Kunai, Kuriga, Kurmin Kaduna, Kurmin Masara, Lere, Libere, Ligari, Madakiya, Madamai, Madauci, Magajin Gari 3,

Magamiya, Mahuta, Makarfi, Manchok, Mando, Manini, Mariri, Maro, Rido, Rigacikun, Rigasa, Rijana, Romi, Rumana, Sabon Birni, Sabon Gari, Sabon Tasha, Sabon Wuse, Sako, Samaru, Saminaka, Sanga, Sayen Lemu, Turunku, Udawa, Ungwan Gajere, Ungwar Sarki, Wuciciri, Wusasa, Zangon Katab, Zankoro, Zaria, Zonkwa.

In **Kano**, 27 incidents killing 4 people were reported. The following locations were among the affected: **Chiromawa, Gezawa, Gwale, Kano, Kore, Kumbotso, Sabon Gari, Sitti, Sumaila.**

In **Katsina**, 141 incidents killing 397 people were reported. The following locations were among the affected: **Bakori, Banye, Barawa, Batsari, Baure, Dan Musa, Dandume, Dangani, Danja, Daura, Dunya, Dutsin Ma, Fankama, Faskari, Funtua, Guzurawa, Gwarjo, Ilali, Jibia, Kafur, Kanawa, Kankara, Katsina, Kofa, Kunduru, Kurfi, Kwakwari, Machika, Mahuta B, Mai Gora, Malumfashi, Matazu, Mununu, Pauwa, Radda, Rafin Iwa, Rijiyar Tsamiya, Rimi, Ruma, Sabon Layi, Sabuwa, Sabuwar Kasa, Safana, Sayau, Shema, Sheme, Tafoki, Tsaskiya, Ummadau, Wanzamai, Wurma, Yan Tumaki, Yargoje, Zandam, Zango.**

In **Kebbi**, 11 incidents killing 122 people were reported. The following locations were among the affected: **Aliero, Bin Yauri, Birnin Kebbi, Marke, Sakaba, Shanga, Wasagu.**

In **Kogi**, 67 incidents killing 56 people were reported. The following locations were among the affected: **Abobo, Ajaokuta, Ayangba, Bugana, Egbe, Egume, Gegu, Gwolawo, Idah, Itobe, Iyara, Kabba, Koton-Karfe, Lokoja, Odo Ere, Ogaminana, Oguma, Okedayo, Okene, Okpo, Onyedega, Osara.**

In **Kwara**, 63 incidents killing 27 people were reported. The following locations were among the affected: **Afon, Alapa, Elega, Erin Ile, Eruku, Esie, Faje, Gbabu, Igbaja, Ilemona, Ilesha-Ibariba, Illorin, Ilofa, Ilorin, Kaiama, Lafiagi, Maleta,**

**Obo Aiyegunle, Offa, Oke Onigbin, Olla, Omu Aran, Oro Ago, Osi, Pasa Lamba, Share.**

In **Lagos**, 113 incidents killing 42 people were reported. The following locations were among the affected: **Abule Ado, Agege, Aja, Alagbado-Ile, Alausa, Apapa, Ayobo, Badagry, Bariga, Ebute-Metta, Ejigbo, Epe, Festac, Iba, Ifako, Igando, Ijora, Iju, Ikeja, Ikorodu, Ikotun, Ikoyi, Ipaja, Isiwu, Isolo, Itire, Kosofe, Lagos, Lekki, Magodo, Mushin, Obalende, Ogba, Ojo, Ojota, Oshodi, Poka, Somolu, Surulere, Tin Can Island, Victoria Island, Yaba.**

In **Nassarawa**, 48 incidents killing 65 people were reported. The following locations were among the affected: **Akwanga, Alogani, Alosi, Ashige, Awe, Doma, Garaku, Giza, Gudi, Keana, Keffi, Lafia, Mararaba, Masaka, Nasarawa, Obi, Toto, Wamba.**

In **Niger**, 180 incidents killing 786 people were reported. The following locations were among the affected: **Agwara, Alawa, Argida, Babun Tunga, Bassa, Beri, Chanchaga, Chukuba, Daja, Dobogi, Doko, Ebbo, Farin Dutse, Fuya, Galkogo, Gawu, Genu, Gini, Gulu, Gurmana, Ibu, Jiko, Kabogi, Kafin, Kagara, Katcha, Kontagora, Kotonkoro, Kuchi, Kuseriki, Kuta, Kutigi, Kutunku, Kwau, Lapai, Madaka, Maganda, Maikonkele, Makura, Manta, Mariga, Mashegu, Mayaki, Minna, Nasko, New Bussa, Paiko, Pan Dongari, Rafingora, Rijau, Sabon Dagga, Sabon Wuse, Salka, Saminaka, Sarkin Pawa, Shadadi, Shiroro, Suleja, Tegini, Uddu, Ushe, Uzawo, Warari, Wawa, Wushishi, Yakila, Zungeru.**

In **Ogun**, 114 incidents killing 44 people were reported. The following locations were among the affected: **Abeokuta, Ado Odo, Agboju, Aiyetoro, Ake, Akomoje, Ebute, Eggua, Fagbohun, Ibara-Orile, Ibeshe, Idiroko, Igbesa, Ijagun, Ijebu-Igbo, Ijebu-Ode, Ijoun, Ikenne, Ilaro, Imala, Imeko, Iperu, Iraye, Isara, Isuku, Itori, Kobape, Magboro, Mowe, Oba, Odeda, Odogbolu, Ofada, Ogere, Oke Mosan, Oke-Eri, Onigari, Otta, Owode, Sanngo-Ota,**



## Shagamu.

In **Ondo**, 73 incidents killing 34 people were reported. The following locations were among the affected: Akunba, Akure, Awoye, Idanre, Ifon, Igbara-Oke, Igbekebo, Igbokoda, Iju, Ikare, Ikare-Akoko, Ilara, Irese, Iwaro Oka, Oba-Ile, Odigbo, Oka, Oke Agbe, Okitipupa, Ondo, Ore, Owo, Owode, Uro Ajowa.

In **Osun**, 83 incidents killing 40 people were reported. The following locations were among the affected: Abere, Alapata, Apomu, Asi, Ede, Erin-Osun, Esa Odo, Esa Oke, Ibokun, Ifewara, Ifon, Ijabe, Ijebu Ijesha, Ikire, Ikirun, Ikoyi, Ile-Ife, Ilesa, Iloko, Imesi Ile, Ipetumodu, Iragbiji, Ire, Iwo, Modakeke, Oke Ila, Oshogbo, Osu, Owode Ede.

In **Oyo**, 130 incidents killing 82 people were reported. The following locations were among the affected: Abule Oba, Agodi, Agoro Ibadan, Ajaawa, Akinkunmi, Akinyele, Awotan, Ayete, Egbeda, Eruwa, Fiditi, Ibadan, Idere, Idi Ayunre, Ido, Igangan, Igbo Ora, Iseyin, Iwere-Ile, Moniya, Ogbomoshu, Ogboro, Oke Ado, Okeho, Onipe, Oyo, Saki, Soka, Tapa, Tede.

In **Plateau**, 99 incidents killing 334 people were reported. The following locations were among the affected: Angware, Barkin Ladi, Bassa, Bokkos, Bukuru, Dengi, Dogon Karfe, Durbi, Fobur, Gada Biu, Ganawuri, Ganawuri Hills, Gindiri, Haifam, Jol, Jos, Kadarko, Kuru, Lamingo, Langtang, Maiyanga, Mangu, Miango, Rayfield, Riyom, Tudun Wada, Unguwar Wereng, Vwang, Wase, Zawan.

In **Rivers**, 91 incidents killing 64 people were reported. The following locations were among the affected: Abonnema, Abua, Abuloma, Afam, Agbonchia, Ahoada, Akpaji, Alesa, Bomu, Bonny, Bori, Boue, Buguma, Choba, Diobu, Elekahia, Elele, Elele Alimini, Elimgbu, Emohua, Gwara, Ikuru, Ipo, Isiokpo, Kula, Nkpelu, Nkpolu Oroworukwo, Oginigba, Ogoni, Okehi, Okrika, Omoku, Oyigbo, Port Harcourt, Rumu-Olumene, Rumuigbo, Rumuji, Woji.

In **Sokoto**, 93 incidents killing 435 people were reported. The following locations were among the affected: Amarawa, Bargaja, Birjingo, Boda, Bodinga, Burukusuma, Chacho, Gandi, Gangara, Gatawa, Gidan Madi, Gobir, Goronyo, Illela, Isa, Kalage, Kojiyo, Kurawa, Kware, Kwasare, Makuwana, Mammande, Rabah, Rarah, Sabo Birni, Sabon Birni, Shinaka, Sokoto, Tara, Tulutu, Tureta, Unguwar Lalle, Wababi, Wurno.

In **Taraba**, 65 incidents killing 134 people were reported. The following locations were among the affected: Arufu, Baissa, Bali, Chanchanji, Donadda, Donga, Garin Jauro Manu, Gassol, Iware, Jalingo, Jen, Kambari, Karim Lamido, Kundi, Kunini, Mutum Biyu, Pangri, Rafin Kada, Sabongida, Sunkani, Takum, Tela, Wukari, Yelwa.

In **Yobe**, 61 incidents killing 240 people were reported. The following locations were among the affected: Babban Gida, Baiomari, Bayamari, Bujimirum, Bukarti, Buni, Buni Gari, Buni Yadi, Damaturu, Dapchi, Fika, Gashua, Geidam, Goniri, Gujba, Gulani, Kanama, Kukareta, Ngurbuwa, Potiskum.

In **Zamfara**, 205 incidents killing 1358 people were reported. The following locations were among the affected: Adabka, Anka, Badarawa, Bakura, Bingi, Birnin Magaji, Birnin Tudun, Boko, Bukuyum, Bungudu, Chafe, Damaga, Dan Sadau, Dankurmi, Faru Magami, Gada, Galadi, Garbadu, Gidan Babagoji, Gobirawa, Gora, Gummi, Gurbin Baure, Gusau, Janbako, Jangebe, Kanoma, Karakai, Karazau, Kaura Namoda, Kaya, Kuriya, Kurya, Kuyanbana, Kware, Kwiambana Forest Reserve, Kyaram, Mada, Magami, Manawa, Maradun, Mareri, Maru, Mayanchi, Moriki, Nahuche, Nasarawa, Rijiyi, Rini, Ruwan-Tofa, Sakajiki, Samawa, Sarkin, Shinkafi, Sububu, Talata Mafara, Tashar Abu, Tofa, Tsafe, Wanke, Yanbuki, Zurmi.



## Sources

- ACLED – Armed Conflict Location & Event Data Project: Africa (20 May 2022), 20 May 2022  
<https://www.acleddata.com/download/2909/>
- GADM – Global Administrative Areas: gadm36\_levels.shp, Version 3.6, 6 May 2018a  
[http://biogeo.ucdavis.edu/data/gadm3.6/gadm36\\_levels.shp.zip](http://biogeo.ucdavis.edu/data/gadm3.6/gadm36_levels.shp.zip)
- GADM – Global Administrative Areas: gadm36\_NGA\_shp.zip, Version 3.6, 6 May 2018b  
[http://biogeo.ucdavis.edu/data/gadm3.6/shp/gadm36\\_NGA\\_shp.zip](http://biogeo.ucdavis.edu/data/gadm3.6/shp/gadm36_NGA_shp.zip)
- Raleigh, Clionadh; Linke, Andrew; Hegre, Håvard, and Karlsen, Joakim: “Introducing ACLED-Armed Conflict Location and Event Data”, in: Journal of Peace Research (47(5) 2010 ), pp. 651–660  
<http://jpr.sagepub.com/content/47/5/651.full.pdf+html>
- Smith, Walter H. F. and Wessel, Paul: Global Self-consistent Hierarchical High-resolution Geography (GSHHG), Version 2.3.4, 1 May 2015  
<https://www.ngdc.noaa.gov/mgg/shorelines/data/gshhg/latest/>

## Disclaimer

Event data may be revised or complemented in future updates. Updates in ACLED’s datasets will not necessarily be reflected in ACCORD’s reports if the update occurs close to or after the latter’s publication. Changes in the sources used by ACLED to collect incident data might affect the comparability of data over time. For more information on ACLED’s methodology, please see [www.acleddata.com/resources/](http://www.acleddata.com/resources/). For more information on ACCORD’s products based on the data, please see the

[ecoi.net blog posts tagged with “ACLED”](#). The lack of information on an event in this report does not permit the inference that it did not take place. The boundaries and names displayed do not imply endorsement or acceptance by the Austrian Red Cross.

## Cite as

- ACCORD – Austrian Centre for Country of Origin & Asylum Research and Documentation: Nigeria, year 2021: Update on incidents according to the Armed Conflict Location & Event Data Project (ACLED), 30 May 2022