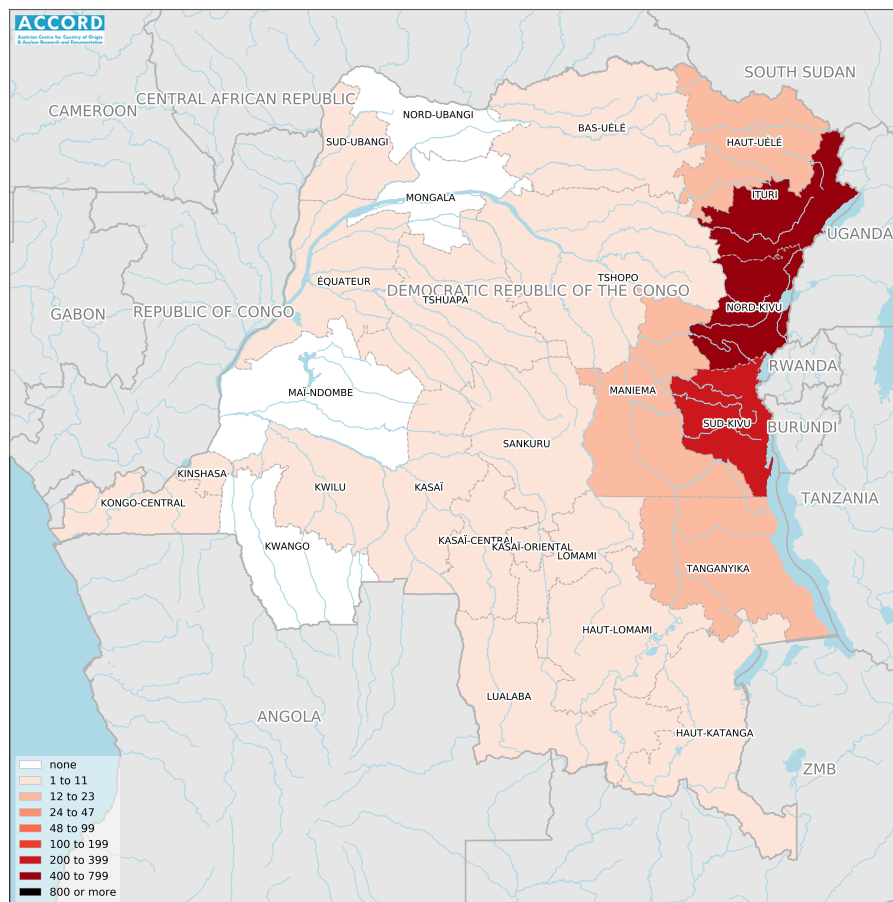


# DEMOCRATIC REPUBLIC OF CONGO, YEAR 2021:

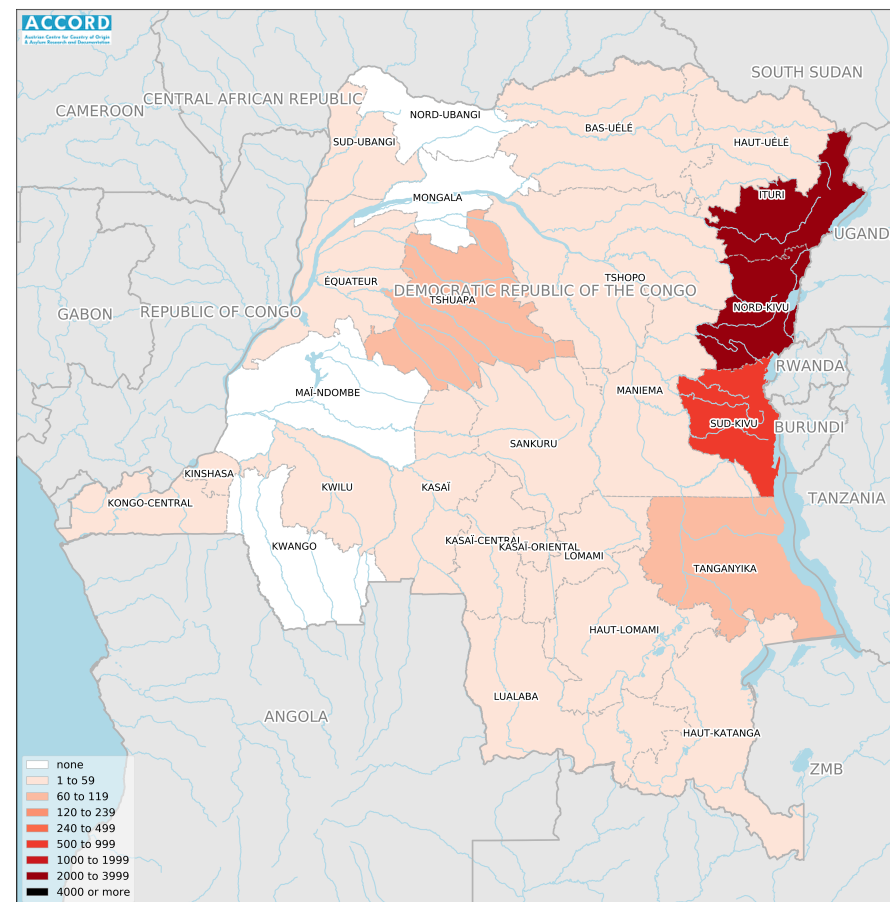
Update on incidents according to the Armed Conflict Location & Event Data Project (ACLED)

compiled by ACCORD, 30 May 2022

## Number of reported incidents with at least one fatality



## Number of reported fatalities



National borders: [GADM, 6 May 2018b](#); administrative divisions: [GADM, 6 May 2018a](#); incident data: [ACLED, 20 May 2022](#); coastlines and inland waters: [Smith and Wessel, 1 May 2015](#)

## Contents

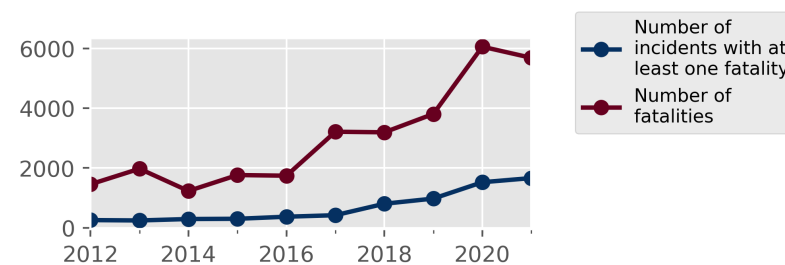
Number of reported fatalities	1
Number of reported incidents with at least one fatality	1
Conflict incidents by category	2
Development of conflict incidents from 2012 to 2021	2
Methodology	3
Conflict incidents per province	4
Localization of conflict incidents	4
Disclaimer	9

## Conflict incidents by category

Category	Number of incidents	Number of incidents with at least one fatality	Number of fatalities
Battles	1350	767	3002
Violence against civilians	1262	682	2281
Riots	434	188	286
Protests	416	6	14
Strategic developments	360	0	0
Explosions / Remote violence	52	18	101
Total	3874	1661	5684

This table is based on data from ACLED (datasets used: [ACLED](#), 20 May 2022).

## Development of conflict incidents from 2012 to 2021



This graph is based on data from ACLED (datasets used: [ACLED](#), 20 May 2022).

## Methodology

The data used in this report was collected by the Armed Conflict Location & Event Data Project (ACLED). ACLED collects data on reported conflict events in selected African and Asian countries, Democratic Republic of Congo being among them. ACLED researchers collect event data from a variety of sources and code them by date, location, agent, and event type.

Most of the data collected by ACLED is gathered based on publicly available, secondary reports. It may therefore underestimate the volume of events. Fatality data particularly is vulnerable to bias and inaccurate reporting, and ACLED states to use the most conservative estimate available. ACLED uses the reports' context to estimate fatalities for events with reported fatalities for which the exact number is unknown ("3" or "10" for plural fatalities, depending on the context; "100" if "hundreds" are mentioned, etc.). For further details on ACLED and for the full data, see [www.acleddata.com](http://www.acleddata.com) and [Raleigh; Linke; Hegre, and Karlsen, 2010](#).

Based on this data, the Austrian Centre for Country of Origin & Asylum Research and Documentation (ACCORD) compiles updates on conflict incidents and publishes them on [ecoi.net](http://ecoi.net) to offer another access point to the ACLED datasets.

It is advised to employ extreme caution when using fatality numbers.

Assessments of the security situation should not be based solely on quantitative analysis of event data.

Geographic map data is primarily based on GADM, complemented with other sources if necessary. Incidents are mapped to GADM provinces using the provinces in ACLED data. Province names and borders may differ between ACLED and GADM. Incidents that could not be located are ignored. The numbers included in this overview might therefore differ from the original ACLED data. ACLED uses varying degrees of geographic precision for the individual incidents, depending

on what level of detail is reported. Thus, towns may represent the wider region in which an incident occurred, or the provincial capital may be used if only the province is known. Erroneous location data, especially due to identical place names, cannot be fully excluded.

Incidents comprise the following categories: battles, violence against civilians, remote violence, riots/protests, non-violent strategic activities. For details on these categories, please see

- ACLED – Armed Conflict Location & Event Data Project: Armed Conflict Location and Event Data Project (ACLED) User Quick Guide, April 2019  
[https://acleddata.com/acledatanew/wp-content/uploads/2021/11/ACLED\\_General-User-Guide\\_April-2019.pdf](https://acleddata.com/acledatanew/wp-content/uploads/2021/11/ACLED_General-User-Guide_April-2019.pdf)
- ACLED – Armed Conflict Location & Event Data Project: FAQs: ACLED Fatality Methodology, February 2020  
[https://acleddata.com/acledatanew/wp-content/uploads/2021/11/ACLED\\_FAQs-Fatalities-Methodology\\_v1\\_February-2020.pdf](https://acleddata.com/acledatanew/wp-content/uploads/2021/11/ACLED_FAQs-Fatalities-Methodology_v1_February-2020.pdf)
- ACLED – Armed Conflict Location & Event Data Project: Armed Conflict Location and Event Data Project (ACLED) Codebook, January 2021  
[https://acleddata.com/acledatanew/wp-content/uploads/2021/11/ACLED\\_Codebook\\_v1\\_January-2021.pdf](https://acleddata.com/acledatanew/wp-content/uploads/2021/11/ACLED_Codebook_v1_January-2021.pdf)

## Conflict incidents per province

Province	Number of incidents	Number of incidents with fatalities	Number of fatalities
Bas-Uélé	18	2	6
Haut-Katanga	36	5	24
Haut-Lomami	9	4	23
Haut-Uélé	54	12	23
Ituri	894	499	2218
Kasaï	17	4	25
Kasaï-Central	26	1	10
Kasaï-Oriental	15	4	4
Kinshasa	130	6	8
Kongo-Central	28	4	5
Kwango	2	0	0
Kwilu	33	4	7
Lomami	12	2	4
Lualaba	16	1	4
Maniema	67	21	49
Mai-Ndombe	5	0	0
Mongala	4	0	0
Nord-Kivu	1459	706	2315
Nord-Ubangi	7	0	0
Sankuru	2	1	2

Province	Number of incidents	Number of incidents with fatalities	Number of fatalities
Sud-Kivu	914	354	763
Sud-Ubangi	15	3	8
Tanganyika	76	16	107
Tshopo	14	2	4
Tshuapa	6	5	67
Équateur	15	5	8

## Localization of conflict incidents

**Note:** The following list is an overview of the incident data included in the ACLED dataset. More details are available in the actual dataset (date, location data, event type, involved actors, information sources, etc.). The data's precision varies among the incidents: a town may represent a region, or the provincial capital may be used if the precise location of an incident is unknown. In the following list, the names of event locations are taken from ACLED, while the administrative region names are taken from GADM data which serves as the basis for the maps above.

In **Bas-Uélé**, 18 incidents killing 6 people were reported. The following locations were among the affected: **Ango, Boeli, Buta, Monga, Mugalie, Nagoda, Nambia, Ndu, Nguma, Pasi, Roa, Tumbale, Zangabai, Zapai.**

In **Haut-Katanga**, 36 incidents killing 24 people were reported. The following locations were among the affected: **Kambove, Kashobwe, Kasumbalesa, Kenya, Kilwa, Kipushi, Likasi, Lubumbashi, Pweto, Upemba National Park.**

In **Haut-Lomami**, 9 incidents killing 23 people were reported. The following locations were among the affected: **Bukama, Kamina, Kaniama Kasese, Luena,**

## Mukulakulu.

In Haut-Uélé, 54 incidents killing 23 people were reported. The following locations were among the affected: Aba, Anduala, Badolo, Bangadi, Bangalu, Bayote, Bitima, Dalundue, Diagbe, Diebio, Doruma, Dungu, Durba, Duru, Faradje, Gangala, Garamba National Park, Isiro, Kaka, Kiliwa, Kulugbangu, Limai, Lindimbina, Mabadabada, Mabilikpa, Makusa, Mambuluku, Masombo, Mbamu, Nakofo, Nambia, Nambili, Nango, Naparka, Niangara, Pilipili.

In Ituri, 894 incidents killing 2218 people were reported. The following locations were among the affected: Abombi, Adru, Adusa, Alafu, Allah, Amee, Andasia, Andisa, Anguna, Apende, Aree, Ariwara, Arr, Aru, Aveba, Awu, Awura, Babonda, Babukela, Badengaido, Badiya, Badui, Baimani, Baiti, Bakobi, Bakonde, Bali, Bambu, Bandinbese, Baru, Batata, Batumbi, Beliba, Belu, Berunda, Biakato, Boga, Bogi, Boku, Bongotsu, Boyo, Buba, Budu, Budundu, Bukaringi, Bukiringi, Bule, Buliria, Bulirwa, Bunia, Bunzenzele, Buwa-Nyare, Bwakadi, Bwana-Sura, Camp Passion, Canana, Chabusiku, Chau, Chimba, Chini ya kilima, Dada, Dala, Damblo, Darlas, Dele, Dhebu, Dhedja, Dhema, Dhena, Dhera, Dhi, Digene, Diro, Djaiba, Djalasiga, Djuda, Djugu, Dodjo, Drodoro, Dziblu, Dzina, Elisha, Emilio, Epanza, Exode, Fataki, Filo, Gandeï, Gbado, Gbala, Geti, Gina, Gokpa, Gu, Gudjo, Gutsi, Huma, Idohu, Iga Barriere, Ilimba, Irumu, Itendey, Jiba, Jii, Jisa, Judjo, K-3, Kabakaba, Kabarole, Kabrique, Kadawasi, Kadema, Kadilo, Kaitango, Kalingi, Kalongo, Kalyamugongo, Kambe, Kambutso, Kandigba, Kandoni, Kangalabo, Kanunu-Palunza, Kanyo, Kasenyi, Kasoko, Katabey, Katoto, Katsu, Kaya, Kenenji, Kengezi, Kilo, Kilo-Etat, Kimba, Kinyanjojo, Kinyombaya, Kishomja, Kitumba, Kobu, Komanda, Kondje, Kpadole, Kpandroma, Kpanga, Kwemkwele, Kyabwohe, Kyamata, Kyamugamba, Kyamujanju, Lake Albert, Landjo, Largu, Leku, Lenga, Lengabo, Lenge, Liberia, Libi, Libreville, Lidja, Linga, Lisey, Lita, Livogo, Lobo, Lobu, Loda, Lodjo, Lokpa, Lokwa, Lombu, Londoni, Lopa, Lorobi, Losani, Lovi, Loya, Lukaya, Luna, Mabanga, Machongani, Mafifi, Maga, Mahagi, Mahala, Mahu, Makayanga, Makeke,

Makpo, Makumo, Malabo, Malanga, Malaya, Malibongo, Malutu, Mambaka, Mambasa, Mambelenga, Mambembe, Mambisa, Mandibe, Mandibe II, Mangala, Mangbedu, Mangiva, Mangosa, Manjamanji, Manyala, Manzobe, Mapendo, Marabo, Masana, Masome, Masumbuko, Matete, Mayalibo, Mayi Safi, Mayi ya Franga, Mayolo, Maze, Mbau, Mbidjo, Mbudjo, Mbumbuli, Miala, Mitembo, Mobali, Mongbwalu, Monge, Mont Hoyo, Mulinga, Mungamba, Muringa, Musaba, Mwanga, Ndalya, Ndalya-Depot, Ndenge, Ndengeza, Nderembi, Ndimu, Ngaka, Ngakpa, Ngakpa II, Ngazba, Ngeleza, Ngobi II, Ngombenyama, Ngongo, Ngotutsi, Nia-Nia, Nioka, Nizi, Njiapanda, Nongo, Nyakabale, Nyangabo, Nyangaray, Nyangri, Nyankunde, Nyara, Nzala, Nzebi, Ofai, Ofaye Otto Maber, Otsu, Pabamga, Pakenge, Panga, Parapluie, Penge, Penie, Penyi, Petsi, Pimbo, Pinzili, Pitso, Rakpa, Rethy, Rhoo, Rimba, Risasi, Roe, Rubingo, Rule, Rwampara, Sakoko, Samangoli, Sambango, Sanduku, Sayo, Shari, Sililo, Singo, Sokotano, Soleniamba, Sona, Songolo, Su, Sube, Tali, Tchani, Tche, Tchendji, Tchere, Tchicha, Tchomia, Tchoro, Tchudja, Tchungu, Tena, Thatsi, Toko, Tolo, Tondoli, Tsali, Tshabi, Tshibi-Tshibi, Tsili, Tsitsi, Tsitsi Leda, Tsopi, Tsoro, Tsoza, Tsukpa, Tsunde, Udhyek, Ukpakli, Ulo, Usigo, Uwesa, Uzi, Vido II, Vido III, Vitsu, Wala, Wazabo, Yagu, Yevo, Yikpa, Zatchoni, Zunguluka.

In Kasai, 17 incidents killing 25 people were reported. The following locations were among the affected: Dekese, Kakenge, Kamuesha, Mapangu, Mushenge, Mweka, Tshikapa.

In Kasai-Central, 26 incidents killing 10 people were reported. The following locations were among the affected: Dimbelenge, Kamuandu, Kananga, Ndekeshu, Tshisuku.

In Kasai-Oriental, 15 incidents killing 4 people were reported. The following locations were among the affected: Kabeya-Kamwanga, Kena Nkuna, Mbuji Mayi.

In **Kinshasa**, 130 incidents killing 8 people were reported. The following locations were among the affected: **Kinshasa, Kinshasa - Bandalungwa, Kinshasa - Barumbu, Kinshasa - Camp Luka, Kinshasa - Gombe, Kinshasa - Kalamu, Kinshasa - Kasa-Vubu, Kinshasa - Kintambo, Kinshasa - Lemba, Kinshasa - Limete, Kinshasa - Lingwala, Kinshasa - Maluku, Kinshasa - Masina, Kinshasa - Matete, Kinshasa - Ndjili Airport, Kinshasa - Ndolo Airport, Kinshasa - Ngaliema, Matadi Mayo, Ndjili.**

In **Kongo-Central**, 28 incidents killing 5 people were reported. The following locations were among the affected: **Boma, Kenge, Kimpese, Kisantu, Luozi, Madimba, Matadi, Mbanza Ngungu, Moanda, Nkamba, Nzenze, Songololo, Tshela.**

In **Kwango**, 2 incidents killing 0 people were reported. The following locations were among the affected: **Feshi, Kenge.**

In **Kwilu**, 33 incidents killing 7 people were reported. The following locations were among the affected: **Bandundu, Bulungu, Gungu, Idiofa, Ikubi II, Kahemba, Kikwit, Masamuna, Masi Manimba, Mukedi, Panu.**

In **Lomami**, 12 incidents killing 4 people were reported. The following locations were among the affected: **Gandajika, Kabinda, Kamende, Lubao, Mwene-Ditu.**

In **Lualaba**, 16 incidents killing 4 people were reported. The following locations were among the affected: **Kisanfu, Kisankala, Kolwezi, Musonoi.**

In **Maniema**, 67 incidents killing 49 people were reported. The following locations were among the affected: **Asani, Kabambare, Kalima, Kalombola, Kalonda, Kasongo, Kibali, Kindu, Kipakata, Lukolo, Lwama, Mabamba, Mumbese, Mutuka, Mutupeke, Mwana Ngindu, Pene-Mende, Salamabila, Samba, Shabimba.**

In **Mai-Ndombe**, 5 incidents killing 0 people were reported. The following locations were among the affected: **Inongo, Kutu, Kwamouth, Nioki, Oshwe.**

In **Mongala**, 4 incidents killing 0 people were reported. The following locations were among the affected: **Bumba, Lisala.**

In **Nord-Kivu**, 1459 incidents killing 2315 people were reported. The following locations were among the affected: **Alimbongo, Apyeutu, Baeti, Bahatsa, Bakila Tenambo, Bambu, Bango, Beni, Bibasirwa, Bihitri, Biiri, Bikara, Birihi, Biruma, Bishusha, Bitongi, Buabo, Bugomba, Bugoye, Buguri, Buhene, Buhimba, Buhumba, Buhuri, Bukengeri, Bukima, Bukombo, Bukomerwa, Bukucha, Bukumbirwa, Bukununu, Bulambo, Buleusa, Bulongo, Bulotwa, Bulwa, Bunagana, Bunyangula, Bunyatenge, Buramba, Burora, Burubi, Buruhura, Burungu, Busanza, Bushalingwa, Bushobyo, Busihe, Busoro, Busumba, Butaka, Butale, Butanuka, Butaro, Butembo, Butembo - Bulengera, Butembo - Matembe, Butembo - Mukalangerwa, Butembo - Wayene, Butendere, Butuhe, Butusande, Buuma, Bwalanda, Bwasha, Bweremane, Bwerere, Bweru, Bweteta, Cantine, Changa, Chanika, Charwika, Chito, Cyahemba, Egombo, Eringeti, Fatua, Fungula, Gakoro, Gelumbe, Gisiza, Goma, Goma - Kasika, Goma - Katindo, Goma - Katoyi, Goma - Keshero, Goma - Mugunga, Goma - Ndosho, Goma - Virunga, Halungupa, Hembe, Hululu, Humule, Ibuga, Ihimba, Ihula, Inkokwe, Irango, Isale, Ishunga, Itebero, JTN, Jomba, Kaandja, Kabanda, Kabaya, Kabembeu, Kabizo, Kabuhendo, Kadou, Kahande, Kahanga, Kahi, Kahira, Kahunga, Kailenge, Kainama, Kainama II & III, Kakalali, Kakingi, Kakuka, Kakuka I, Kakuku, Kalembe, Kalembo, Kalengera, Kalevia, Kalingati, Kalivuli, Kalonge, Kalungu, Kalunguta, Kamande, Kamango, Kambau, Kambi Ya Yua, Kamudoka, Kamuhororo, Kamulima, Kanaba, Kangamotema, Kaniro, Kanune, Kanyabayonga, Kanyabusoro, Kanyamahoro, Kanyamitango, Kanyatsi, Kanzanza, Kapopi, Karambi, Karuruma, Kasaka, Kasali, Kasengesi, Kashafu, Kashalira, Kashanje, Kashebere, Kashesha, Kashuga, Kashungano, Kashwa, Kasindi, Kasinga, Kasisi, Kasithu, Katahandwa, Katale, Katanda, Kathina, Katsiru, Katuhunda,**

Katunda, Katuunda, Katwa, Katwiguru II, Kavasewa, Kavingu, Kazaroho, Kazuba, Kekelibu, Kenehambahore, Kibarizo, Kibati, Kibaya, Kibingu, Kibirangiro, Kibirizi, Kibumba, Kididiwe, Kifumu, Kihondo, Kihuma, Kikarara, Kikingi, Kikuku, Kikuvo, Kikwaba, Kilia, Kilya, Kimoka, Kimuchanga, Kingarame, Kinigi, Kinumbi, Kinundu, Kinyambahore, Kinyana, Kinyandoni, Kinyandonyi, Kinyumba, Kipakali, Kipese, Kiriko, Kirima, Kiringa, Kirotshe, Kirumba, Kirumbu, Kisalala, Kisanga, Kise, Kiseguru, Kishanja, Kisharo, Kisharu, Kishee, Kishondji, Kisigari, Kisiki, Kisima, Kisone, Kisui, Kisuma, Kisunga, Kitchanga, Kitereko, Kitimba, Kitoboko, Kitsimba, Kivugha, Kivuye, Kiwanja, Kiyeye, Kokola, Kongo, Kugheki, Kukutama, Kyachinge, Kyaghala, Kyandao, Kyangara, Kyangitsi, Kyanika, Kyasenda, Kyavikere, Kyavinyonge, Kyondo, Kyuna, Lake Edward, Libokara, Limangi, Lingitana, Lisasa, Loashi, Logu, Loselose, Lubango, Lubero, Luhanga, Luhinzi, Luke, Lukweti, Lume, Lushebere, Luve, Lwanguba, Lwibo, Mabola, Mabondo, Mabule, Machazo, Mahanga, Makima, Makisabo, Makoka, Makoko, Makumbo, Makumo, Makungwe, Makutano, Malambo, Maleki, Maliajame, Malio, Mambabio, Mambango, Mamove, Mamove-Maleki, Mangango, Mangazi, Mangina, Manguaki, Manguredjpa, Mangwautu, Manyioni, Masambo, Masenge, Mashango, Masisi, Matebe, Matenge, Matombo, Matongo, Mavivi, Mavono, Maya, Mayeba, Mayele, Mayimoya, Mbau, Mbilali, Mbogani, Mbughavinywa, Mbwavinwa, Mera, Miandja, Mianja, Mihanga, Mirangi, Miriki, Misinga, Mitero, Mpati, Mubambiro, Mubi, Mubuga, Mughalika, Mugwata, Muhandi, Muheto, Muhongozi, Mukaka, Mukohwa, Mukoko, Mulimbi, Mulo, Mulobya, Mulwa, Mungazi, Munigi, Muramba, Murambi, Musekura, Museya, Mushweshwe, Musienene, Musirandura, Mutaho, Mutanda, Mutendero, Mutero, Muti, Mutobo, Mutoha, Mutongo, Mutsonge, Mutwanga, Muvulya, Muyenzi, Mwalika, Mwenda, Mweso, Ndoluma, Ndombi, Nduko, Ndwali, Ngele, Ngeleza, Ngesha, Ngoi, Ngongolio, Ngoroba, Ngugo, Ngululu, Ngungu, Nobili, Nyabanira, Nyabili, Nyabiondo, Nyakakoma, Nyaleke, Nyamilima, Nyamiri, Nyamitaba, Nyamitwitwi, Nyamubingwa, Nyanzale, Nyarubande, Nyarubuga, Nyaruhange, Nyiragongo, Nzaka, Nzenga, Oicha, PK30, Pabuka, Paida, Pendekali, Peti, Pinga, Pitakongo, Pongopongo,

Rangira, Remeka, Rubare, Rubaya, Ruboga, Rubumba, Rugarama, Rugari, Rugets, Rugogwe-Bunjuli, Ruharage, Rukoko, Rukoro, Rukorwe, Rumangabo, Runyonyi, Rusayo, Rusekera, Ruseme, Rushovu, Rutshuru, Ruvungi, Ruwenzori II, Rwindi, Sake, Samboko, Shakingi, Shango, Shonyi, Showa, Simobo, Singa, Singipa, Supa, Tenambo, Tongo, Tshanzu, Tsotsora, Tunda, Turunga, Ufumandu, Utunda, Vido I, Virunga National Park, Visiki, Vitshumbi, Vuhesi, Vuhira, Vuhovi, Vukendo, Vuranga, Vusamba, Vuthotholya, Walikale.

In Nord-Ubangi, 7 incidents killing 0 people were reported. The following locations were among the affected: Bosobolo, Businga, Gbadolite, Mogoro, Yakoma.

In Sankuru, 2 incidents killing 2 people were reported. The following location was among the affected: Lusambo.

In Sud-Kivu, 914 incidents killing 763 people were reported. The following locations were among the affected: Abala, Abwela, Ake, Akongye, Alelenge, Alelwa, Amba, Balala, Balala Sud, Baliga, Bambote, Bandari, Baraka, Baraka - Mushimbakye, Batayo, Bibangwa, Bibogobobo, Bideka, Bigaragara, Bijombo, Bikuba, Binyenge, Biriba, Bisisi, Bitumba, Biziba, Bogamanda, Bubale, Bugaru, Bugobe, Bugorhe, Buhesi, Buhumba, Bukavu, Bukavu - Bagira, Bukavu - Kanoshe, Bukavu - Ndendere, Bukavu - Panzi, Bulaga, Bulindi, Bushushu, Bushwira, Butacha, Butumba, Bwagwa, Bwegeza, Bweremana, Bwesho, Bwimika, Cakira, Canzovu, Chanzovou, Chibinda, Chikomo, Chitendebwa, Chulwe, Cifunzi, Cigoma, Cimpwiji, Cirunga, Ebisha, Ekyengya, Fendula, Fizi, Gitavi, Gongwa, Gongwe, Hona, Hongero, Idjwi, Igoki, Ikoma, Ilundu, Itula, Kabamba, Kabara, Kabare, Kabere, Kabikokole, Kabimba, Kabingo, Kaboke, Kabondola, Kabulu I, Kabumbe, Kabunambo, Kabungo, Kabushwa, Kacungwe, Kafulo, Kagabi, Kagando, Kagogo, Kagunga, Kahanda, Kahembarhi, Kahololo, Kahuna, Kahungwe, Kajoro, Kakamba, Kakanda, Kakenge, Kakombe, Kakuku I, Kakumbukumbu, Kalehe, Kalinga, Kalingi, Kalipa, Kalongwe, Kalungu, Kalungwa, Kalungwe,



Kamakombe, Kambale, Kambema, Kamituga, Kamombo, Kamonyi, Kanga, Kangwe, Kanogo, Kanyama, Karamba, Karava, Karega, Kaseke, Kashama, Kasheke, Katala, Katana, Katanga, Katasomwa, Kateja, Katekama, Katobo, Katogota, Katoki, Katonda, Katongo, Katungulu, Katwenge, Katyaza, Kavimvira, Kavumu, Kawumusaraba, Kayangwe, Kazaroho, Kazimia, Kazimwe, Kibanga, Kibirizi, Kibungu, Kichanga, Kidodobo, Kifune, Kigoma, Kigongo, Kigulube, Kigwena, Kihande, Kilembwe, Kiliba, Kiliba - Kagando, Kimbili, Kimoto, Kimuka, Kipupu, Kiringye, Kirumba, Kirungu, Kiryama, Kisanga, Kiseke, Kisha, Kishagala, Kisozi Kabumenge, Kitasha, Kitembe, Kitemesho, Kitindi, Kitoga, Kitundu, Kitutu, Kivumu, Kiziba, Kwisumu, Lemera, Lubengeru, Luberizi, Lubichako, Lubondja, Lugungu, Lugushwa, Luhihi, Luhonga, Lukoma, Lukongo, Lulinda, Lulingu, Lumbishi, Lurhala, Lusenda, Lutika, Luvungi, Lwaramba, Lweba, Lwelela, Lwemba, Lwiko, Magaja, Magunda, Maheta, Maimingi, Makama, Makobola, Makwale, Malangiro, Mankulu, Marungu, Masango, Mashuba, Mataba, Matala, Matili, Mbirikira, Mboko, Mbundamu, Miabi, Miba, Mihanda, Mikalati, Mikamba, Mikenge, Milimba, Minembwe, Minova, Mirungu, Misha, Mishashu, Misisi, Miti, Mongemonge, Mubere, Muchombe, Mudaka, Mugeru, Mugeti, Mugogo, Mugote, Mukaba, Mukera, Mukoloka, Mukono, Muku, Mukumba, Mukwezi, Mulanga, Mulongwe, Mumbili, Munywema, Murambi, Muranvya, Muranvya Catholique, Murunga, Musayo, Mutambala, Mutarule, Muyange, Mwandakano, Mwayenga, Mwenga, Mwijombo, Nakanango, Namukangaza, Natulonge, Ndegu, Ndende, Ndese, Ndolera, Ngalula, Ngendo, Ngoma, Nguma, Ntalangwa, Ntayoberwa, Numbi, Nundu, Nyakabere I, Nyakakoba, Nyalubemba, Nyalukulu, Nyamunindi, Nyamutiri, Nyange, Nyangezi, Nyantende, Nyarundari, Nyatesa, Nzibira, Nzovu, Point Zero, Rambo, Regeza, Rikobero, Rombe I, Rubanga, Rubarati, Rubibi, Rubuga, Rudaga, Rudefu, Ruhito, Rukobero, Rukuka, Rulimbi, Runingu, Runundu Cepac, Rurambo, Rusabagi, Rutanga, Rutemba, Rutigita Monyi, Sange, Sangiye, Sango, Sasira, Shabunda, Simba, Simbi, Suiza, Swima, Teganya, Tulambo, Tulongo II, Tumungu, Tusisi, Tuwetuwe, Uvira, Walungu, Ziralu.

In **Sud-Ubangi**, 15 incidents killing 8 people were reported. The following locations were among the affected: **Akula, Bobito, Gemena, Kungu, Zongo**.

In **Tanganyika**, 76 incidents killing 107 people were reported. The following locations were among the affected: **Bakalanga-Tengo, Bendera, Butondo, Kabimba, Kabumba, Kahinda, Kakinga, Kalemie, Kalima, Kalume, Kasanga, Kibemba, Kongolo, Lambo Katenga, Lugogo I, Manono, Mapanda, Mbulula, Moba, Muhuya, Mukonga, Mukundi, Mulolwa, Musebe, Muyumba, Nyemba, Nyunzu, Ringo**.

In **Tshopo**, 14 incidents killing 4 people were reported. The following locations were among the affected: **Kisangani, Kisangani Airport**.

In **Tshuapa**, 6 incidents killing 67 people were reported. The following locations were among the affected: **Bianza, Boende**.

In **Équateur**, 15 incidents killing 8 people were reported. The following locations were among the affected: **Bomongo, Djombo, Ingende, Lulonga, Mbandaka**.



## Sources

- ACLED – Armed Conflict Location & Event Data Project: Africa (20 May 2022), 20 May 2022  
<https://www.acleddata.com/download/2909/>
- GADM – Global Administrative Areas: gadm36\_COD\_shp.zip, Version 3.6, 6 May 2018a  
[http://biogeo.ucdavis.edu/data/gadm3.6/shp/gadm36\\_COD\\_shp.zip](http://biogeo.ucdavis.edu/data/gadm3.6/shp/gadm36_COD_shp.zip)
- GADM – Global Administrative Areas: gadm36\_levels.shp, Version 3.6, 6 May 2018b  
[http://biogeo.ucdavis.edu/data/gadm3.6/gadm36\\_levels.shp.zip](http://biogeo.ucdavis.edu/data/gadm3.6/gadm36_levels.shp.zip)
- Raleigh, Clionadh; Linke, Andrew; Hegre, Håvard, and Karlsen, Joakim: “Introducing ACLED-Armed Conflict Location and Event Data”, in: Journal of Peace Research (47(5) 2010 ), pp. 651–660  
<http://jpr.sagepub.com/content/47/5/651.full.pdf+html>
- Smith, Walter H. F. and Wessel, Paul: Global Self-consistent Hierarchical High-resolution Geography (GSHHG), Version 2.3.4, 1 May 2015  
<https://www.ngdc.noaa.gov/mgg/shorelines/data/gshhg/latest/>

## Disclaimer

Event data may be revised or complemented in future updates. Updates in ACLED’s datasets will not necessarily be reflected in ACCORD’s reports if the update occurs close to or after the latter’s publication. Changes in the sources used by ACLED to collect incident data might affect the comparability of data over time. For more information on ACLED’s methodology, please see [www.acleddata.com/resources/](http://www.acleddata.com/resources/). For more information on ACCORD’s products based on the data, please see the

[ecoi.net blog posts tagged with “ACLED”](#). The lack of information on an event in this report does not permit the inference that it did not take place. The boundaries and names displayed do not imply endorsement or acceptance by the Austrian Red Cross.

## Cite as

- ACCORD – Austrian Centre for Country of Origin & Asylum Research and Documentation: Democratic Republic of Congo, year 2021: Update on incidents according to the Armed Conflict Location & Event Data Project (ACLED), 30 May 2022