

January - April, 2022

In Rakhine State, 68,642 persons remain displaced as of the 5th of May 2022 in ten townships as a result of clashes between the Arakan Army and the Myanmar Armed Forces. UNHCR, in collaboration with partners and other UN agencies, has responded to the humanitarian needs and extended its assistance to affected communities. Thus far in January to April 2022, UNHCR non-food items, emergency shelter support and dignity kits have been provided to some 17,944 affected persons from 4,194 households in Mrauk-U, Myebon, Kyauktaw, Minbya, Ponggyun, Sittwe, Buthidaung and Rathedaung Townships and 88 remote and in-person follow-ups and 27 missions were conducted as appropriate.

Access to some sites remains limited for UNHCR and partners, particularly in more rural areas, a situation which has been further exacerbated by COVID-19.

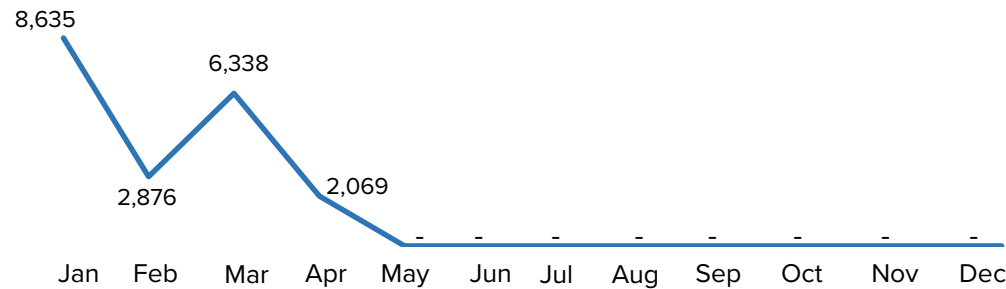
Population Reached

 **17,944** Individuals
4,194 Households

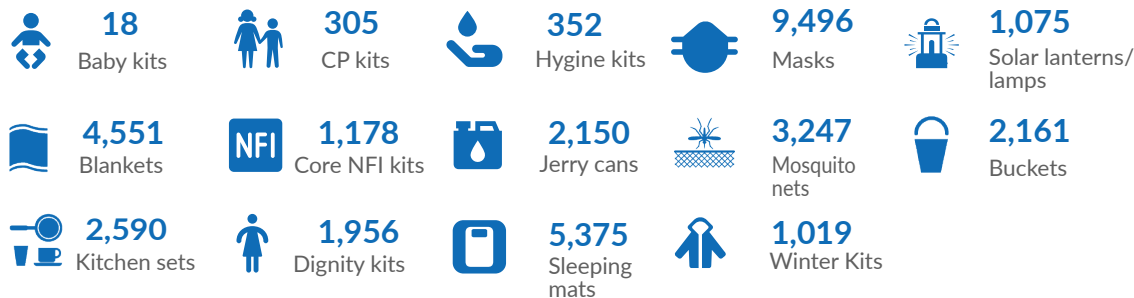
Locations

 **53** Displacement Sites reached with assistance in Rakhine State
(Mrauk-U, Kyauktaw, Ponnagyun, Minbya, Sittwe, Myebon, Buthidaung and Rathedaung Townships)

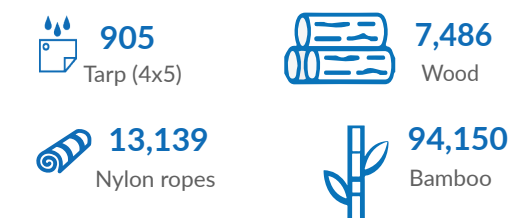
Number of persons reached per month



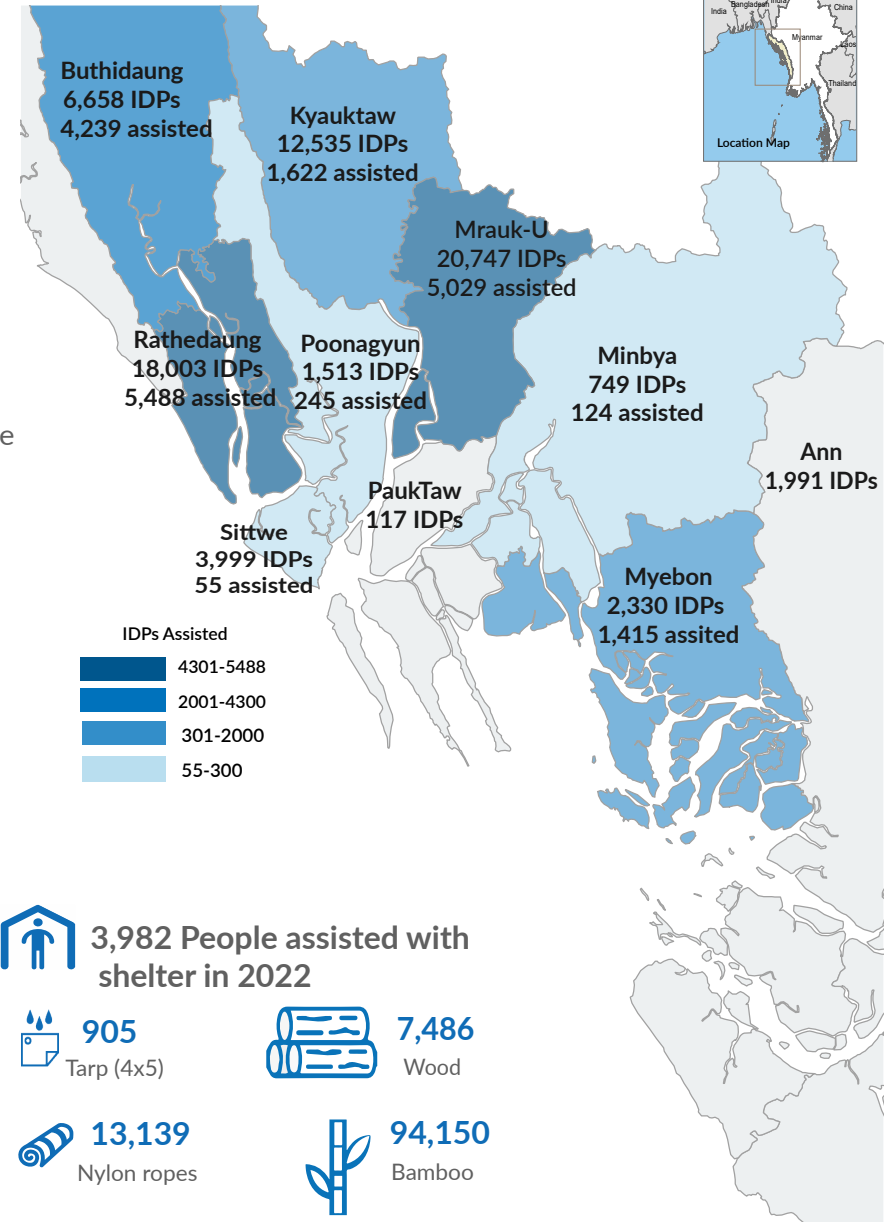
NFI 17,042 People assisted with Non-food Items in 2022



3,982 People assisted with shelter in 2022



The boundaries and names shown and the designations used on this map do not imply official endorsement or acceptance by the United Nations.



UNHCR is very grateful to donors who have provided softly earmarked and unearmarked contributions to UNHCR Myanmar and globally: Australia, Belgium, Canada, Denmark, the European Union, France, Germany, Japan, Ireland, Italy, Netherlands, Norway, Republic of Korea, Sweden, Switzerland, United Kingdom, United States of America, as well as private donors from Australia, Germany, Italy, Japan, Republic of Korea, Spain, and Sweden.

Partners

nRS (Joint Response Team): MI, UNICEF, UNFPA
CRS: IRC, IOM, LWF, PIN, RI