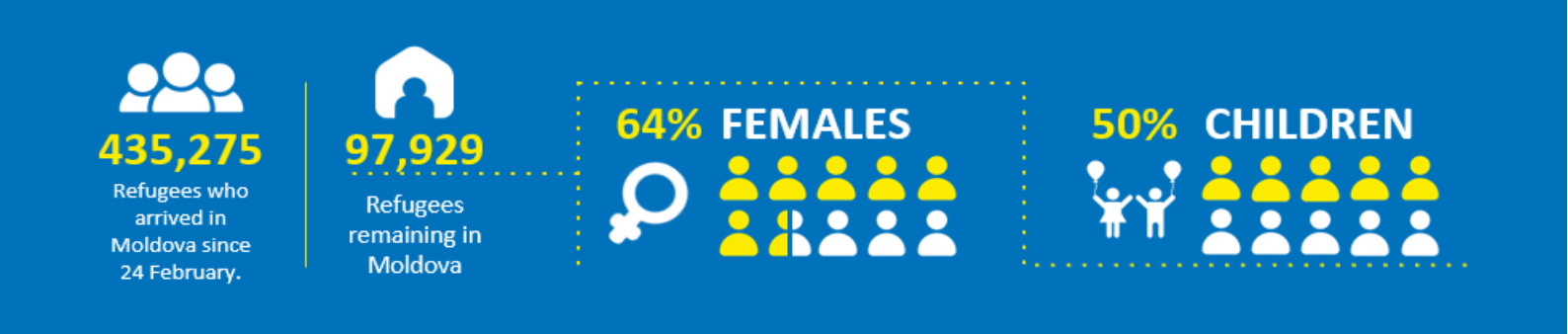




MOLDOVA | 26-26 APRIL
INTER-AGENCY UPDATE n. 12

Photo: Aurel Obreja / UN Women



HIGHLIGHTS



Disability Taskforce has developed and is promoting a common advocacy plan for the inclusion and mainstreaming of disability at the level of each sector: protection, nutrition, monetary assistance, education, health, and transport. To date, more than 400 refugees with disabilities and their families were supported by partners such as Keystone Moldova, Low vision, FCPS, SOS Autism, Centrul pentru Drepturile Persoanelor cu Dizabilități, Motivation, Hope, Association of Entrepreneurs with Disabilities. Support provided includes needs assessment, information, counselling psychological, accommodation, food packages, medicines, assistive equipment, adapted transport



The Gender Task Force continues to work actively and collaboratively with different sectors to advance gender mainstreaming across the refugee response. The task force approved its workplan for 2022 and is developing checklists for mainstreaming gender in different sectors and working on the preparations for a training on gender in humanitarian action (GiHA) in the second quarter of the year. The Task Force is also contributing to promote a gender perspective throughout assessments, including the Multi Sector Needs Assessment.

SECTOR HIGHLIGHTS

This section brings you on the ground coverage of activities by partners

Protection

- On 26 April 2022, UNHCR concluded its community-level protection monitoring exercise. Since 12 April, UNHCR, IOM, and ACTED have assessed protection risks and concerns, information provision, and trafficking risks at 71 Border Crossing Points (BCPs), Refugee Accommodation Centres (RACs), and transportation hubs. The results will be summarized in interactive dashboards and made available to members of the PWG.
- In Otaci, the UNHCR convened the fifth coordination and information exchange meeting. The Ocnita Raion emergency cell coordinator attended the meeting and expressed support to further discuss the contingency plan. Médecins Sans Frontières (MSF) is withdrawing its activities from the area, with the option of rapidly expanding if necessary, and BRF will take over operations. The actors have made progress on creating a brochure outlining Otaci BCP's refugee services. European Union Border Assistance Mission to Moldova (EUBAM) requested that UNHCR provide Border Police training on asylum access. ACTED/UNHCR will establish an information point to direct the flow of people passing through CBP.
- The UNHCR visited Balti's food and hygiene distribution point, which is established by a coalition of local non-governmental organizations led by the human rights NGO ADO Lex XXI. Every week, the distribution point serves approximately 2,000 people. UNHCR agreed to approach local government to discuss possible assistance in promoting social cohesion and averting the escalation of existing tensions between the municipality and the consortium. Additional actions will be coordinated with the consortium and agreed upon.
- IOM organised a sensitisation session on prevention and response to trafficking in person, in Dubasari. The participants were briefed about the services available in Moldova, and safety measures for persons deciding to move onward.
- During the reporting period,
- 166 individuals were supported to be relocated to Germany (119) and Austria (47) on a shared charter flight under the EU solidarity platform. UNHCR coordinates the relocation of refugees under the EU solidarity platform with IOM and EU.
- The Norwegian Refugee Center (NRC) has organized a training session for authorities and local non-governmental organizations (NGOs) on the principles of humanitarian action. The training was attended by 30 participants.
- The Centrul pentru Drepturile Persoanelor cu Dizabilitati (Center for Disability Rights of Persons with Disabilities) provided information and assistance to 50 persons with disabilities on asylum procedures in Moldova. The non-governmental organization monitored the respect for the rights of people with disabilities in shelters and completed the report on the evaluation of the accessibility of the Chisinau Centre for the Elderly.
- Keystone Moldova and UN Office of High Commissioner on Human Rights integrated disability indicators in the assessment questionnaire for refugees living with host communities.
- The NGO Motivatie supported 24 persons with disabilities, including two children with nutrition and hygienic products. One adult with severe disabilities was ensured with adapted transportation.
- European Association of Service (EASPD) General Secretary Maya Doneva visited Moldova on scoping mission to open a regional office to support person with disability. Overall, EASPD will support the establishment of six regional offices in Moldova, Poland, Bulgaria, the Netherlands, Lviv, and Romania to assist person with severe disabilities fleeing Ukraine.
- The Law Center of Advocates (LCA) supported ten unaccompanied children at the Palanca border crossing point. They were reunited

with their parents by the guardianship authority of Moldova.

- Law Center of Advocates (LCA) assisted ten unaccompanied children at the border crossing point in Palanca. They were referred to guardianship authority and reunited with their parents in the Republic of Moldova.
- During the reporting period, LCA provided 966 individual counselling sessions in RACs and private homes. 42 Airlift requests had been received through the hotline.
- LCA conducted a training session on asylum law and vulnerability identification for 35 border police officers and staff.
- UN Women mobilized additional funds for women's organizations from Moldova through the Women's Peace and Humanitarian Fund to enhance participation of women in humanitarian planning and response, enhance safety, security and mental health of women and girls, and improve socio-economic recovery and political participation of women and young women in forced displacement.
- UN Women, in collaboration with the Border Police, organised an event in the Ialoveni accommodation centre, Costesti, and MoldExpo in Chisinau as part of psycho-social support and community building efforts reaching out to more than 320 refugees.

Gender Based violence

- UNHCR visited the Maternal Center Trust in Cahul, the Maternal Center Pro Familia, and the Ray of Trust in Causeni as part of a service mapping exercise to establish effective service referral pathways. So far, the UNHCR has identified eight gender-based violence (GBV) services in Chisinau, Balti, Causeni, and Cahul, with work continuing in other locations. Referral information to the UNHCR CBI and airlifts was shared to facilitate access to services for survivors of gender-based violence.
- GBV SWG referral pathways now cover all regions (North, South, Central and Chisinau) and have been shared now also in Romanian and Russian

Child Protection

- UNICEF and UNHCR in cooperation with Custom and Border Police continue to scale-up Blue Dot services in Palanca, including setting up tents, pre-positioning supplies (WC and showers) and checking containers for the youth and child-friendly spaces.
- The Ministry of Education and Research, Swiss Cooperation Office, and UNFPA Moldova founded the Youth Centres Network. Resilience-building, art therapy, and beginner Romanian language courses are among the initiatives expanded by Youth Center Networks as part of the humanitarian response. Other Ukrainian refugee students use the Youth Centre's internet and educational resources. Volunteers from the city and region's Youth Centres also visit the Orange Safe Spaces.

Supply and Logistics

- WFP dispatched six shipments delivering 3.8 MT of assorted humanitarian cargo to RACs and municipalities on behalf of the Ministry of Labour and Social Protection (MLSP).

Accommodation and Transportation

- UNHCR visited an unregistered shelter in Balti with 108 residents. The shelter is a private property used as a children's summer camp. With the help of ADO Lex XXI, the building owner has been able to provide hot meals, hygiene items, and extracurricular activities for both children and adults. The building can accommodate 140 people if renovated. UNHCR accommodation and transportation team will assess the building as a potential RAC.
- UNHCR assessed potential accommodation options in Palanca village and the surrounding area. Two potential sites for accommodation were identified at the Palanca bus station and in Stefan Voda village. The local community has expressed an interest to host refugees and Mayor's office will coordinate the follow-up.

- UNHCR and partners continued their collaborative efforts to improve the site of the Palanca bus station. Some of the actions being taken in this regard include the improvement of the waiting area, the bus station, the management of the flow of people, the provision of information material, and the installation of information boards.
- ACTED improved the coverage of existing Wi-Fi in one RAC on village Volovita and installed one Wi-Fi point in Peresecina and Chisinau: Centru cu Dizabilitati.
- UNHCR, IOM and ACTED continued to support refugees with transportation support at the border crossing points. WFP and Cooperating Partners – with signed FLAs – have delivered 212,004 hot meals (3 per day) in 31 different localities/regions and 94 centres from the start of implementation (15 March). This equates to 1,805 people per day on average. Please see the dedicated [dashboard](#) for more details.
- ACTED finished the repair at Albisoara RAC. ACTED is working with UNHCR to plan new maintenance work in MoldExpo. A new tool for assessing RACs and gaps has been developed.
- The Moldovan Association of Entrepreneurs with Disabilities, in collaboration with the Network of Roma Women and the local administration of Greblesti, opened a RAC in Greblesti Strasenii with a capacity of 45 places for refugees. Beginning on April 11, the center provided services to 62 persons with disabilities as well as 19 persons from the Roma community.
- Baltata shelter's accessibility was evaluated, by the Center Speranta. The shelter has the capacity to host three families with persons with disability.

Education

- UNICEF and partners procured three containers for adolescent-friendly spaces at Palanca and Republican Children and Youth Centre Artico next to the Blue Dot units. The adolescent-friendly spaces are expected to provide programmes and services daily to approximately 100 young refugees.

- NRC education is in the process of finalizing the education and youth intervention in Moldova and is in consultation with location organisations. NRC's planned activities include non-formal education activities, support for formal education as well as youth education and training.

Health and Nutrition

- The WHO and UNICEF participated in a press conference organised by the Ministry of Health (MoH) to commemorate European Immunization Week. WHO continues to provide the Republic of Moldova with the assistance it needs to improve equitable and expanded access to immunization services for its citizens and refugees.
- As part of the development partners' collaborative response to the COVID-19 pandemic, the Federal Ministry of Social Affairs, Health, Care and Consumer Services of Austria, through the Austrian Embassy in Chisinau, and the WHO donated personal protective equipment and biocides to 13 social assistance institutions managed by the National Agency for Social Assistance.
- WHO continues to support MoH in Medical Evacuation and further applying of Early Warning, Alert and Response System (EWARS) for patient transfer to the EU countries. The lessons learned during medical evacuation(s), including the evacuation of five patients with cancer to Italy via Romania have been discussed with MoH and head of the Institute of Oncology.
- UNICEF developed key social, and behaviour change messages to promote the adoption of key practices around hygiene and sanitation practices, immunization with a focus on polio vaccination, promotion of exclusive breastfeeding, child protection and education.
- Mental Health Psychosocial Support (MHPSS) Technical Reference Group in Moldova led by WHO under the Health and Nutrition sector is supporting sectors to ensure MHPSS is mainstreamed across the refugee response. During the reporting period the main activities were dedicated to the identification of MHPSS

capacity-building needs and resources across sectors.

- The training package for the Mass Casualties Management (MCM) was updated by the WHO jointly with the MoH. The training for up to 20 hospitals started on 26 April 2022.
- UNICEF is procuring a new batch of 50,000 baby hygiene kits, mainly for the Blue Dot Children and Family support hubs.
- UNICEF is procuring new shower containers as part of contingency planning and will install these containers at key locations (Blue Dot locations, RACs) as part of UNICEF's efforts to expand further and improve the quality of services with the crisis now entering its third month.
- UNICEF continued the trainings of primary health care workers on immunization, including the vaccination of refugee children from Ukraine. More than 1,000 health workers were trained.
- Between March 28 and April 26, IOM provided psychological counselling (individual/group) for 83 refugees and TCNs in RACs.

Livelihoods and Inclusion

- Through the "Support to Confidence Building Measures Programme V" financed by the European Union, UNDP is supporting the efforts of Moldovan National Authorities, local authorities and communities on both sides of the Nistru river to respond to the needs of the refugees fleeing into the Republic of Moldova in the context of the conflict in Ukraine. The activities aim to contribute to social cohesion and ensure smooth temporary integration of refugees. Through this project, the Youth Association "Sansa" organized knowledge activities and socializing games for 31 children and eight adult refugees from Varnița village. Psychological counselling was offered to nine refugees, and 11 refugees were assisted with registration and the provision of necessary assistance, activities for children, medicine, etc. The Centre for Innovative Educational and Social Programs from Tiraspol organized a series of activities for refugees on the left bank

benefitting a total of 45 children aged 3 to 14 years.

Cash-based intervention

- As of 26 April, 29,795 refugees have been enrolled and issued bank cards for UNHCR's MPCA programme. Eight enrolment centres are operational in the country, with mobile teams supporting enrolment in other locations. USD 3.5 million has been disbursed by the UNHCR cash programme.
- Together with WFP and UNHCR, UNICEF developed a perception survey questionnaire to monitor refugee and host community perceptions of the quality of humanitarian assistance. A baseline survey will be conducted over the coming weeks.
- Within the joint WFP-UNICEF proposal for Social Protection Responses to crisis-affected Vulnerable Moldovan Families, UNICEF has developed TORs for simulations and costed options for new targeting and calculation formula for Ajutor Social, based on inflation and commodity/ energy prices impact on the poorest quintile of the population.
- WFP has revised the target for the families to be reached to 15,000 families through cash-based assistance based on the observations from the experience of rolling out the cash programme, as well as observations from community feedback mechanism. Please see the [WFP cash transfers programme for Moldovan host communities dashboard for more information](#).

Moldova refugee inter-agency coordination



For more information, please contact

Marwa Hashem, External Relations Officer, hashemma@unhcr.org | Kiri Atri, Reporting Officer, atri@unhcr.org |
 Interagency Coordination mdachrcf@unhcr.org