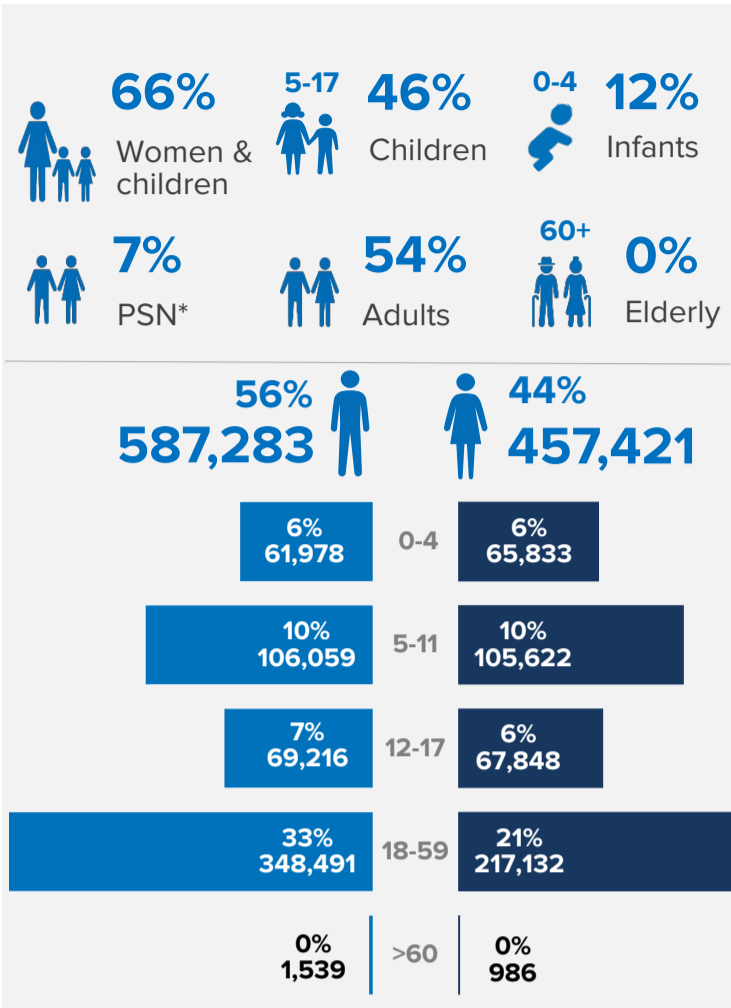
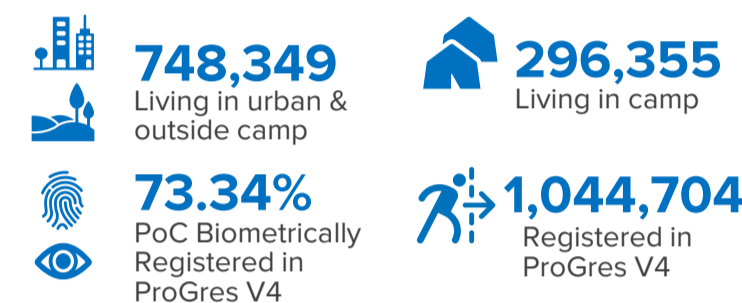
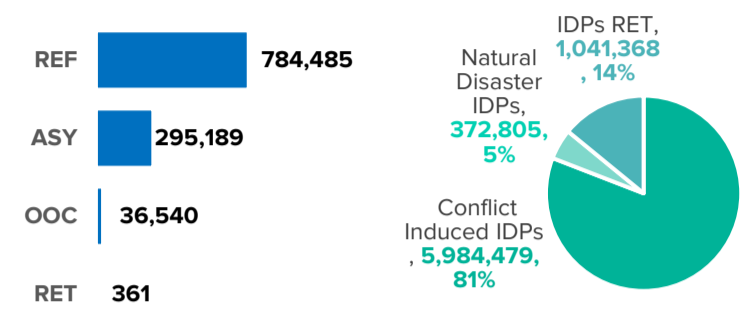


**KEY FIGURES**

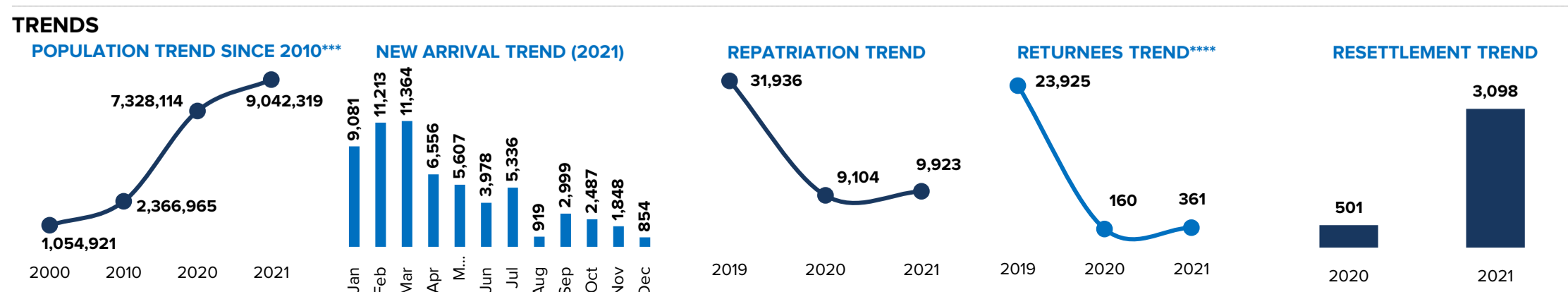
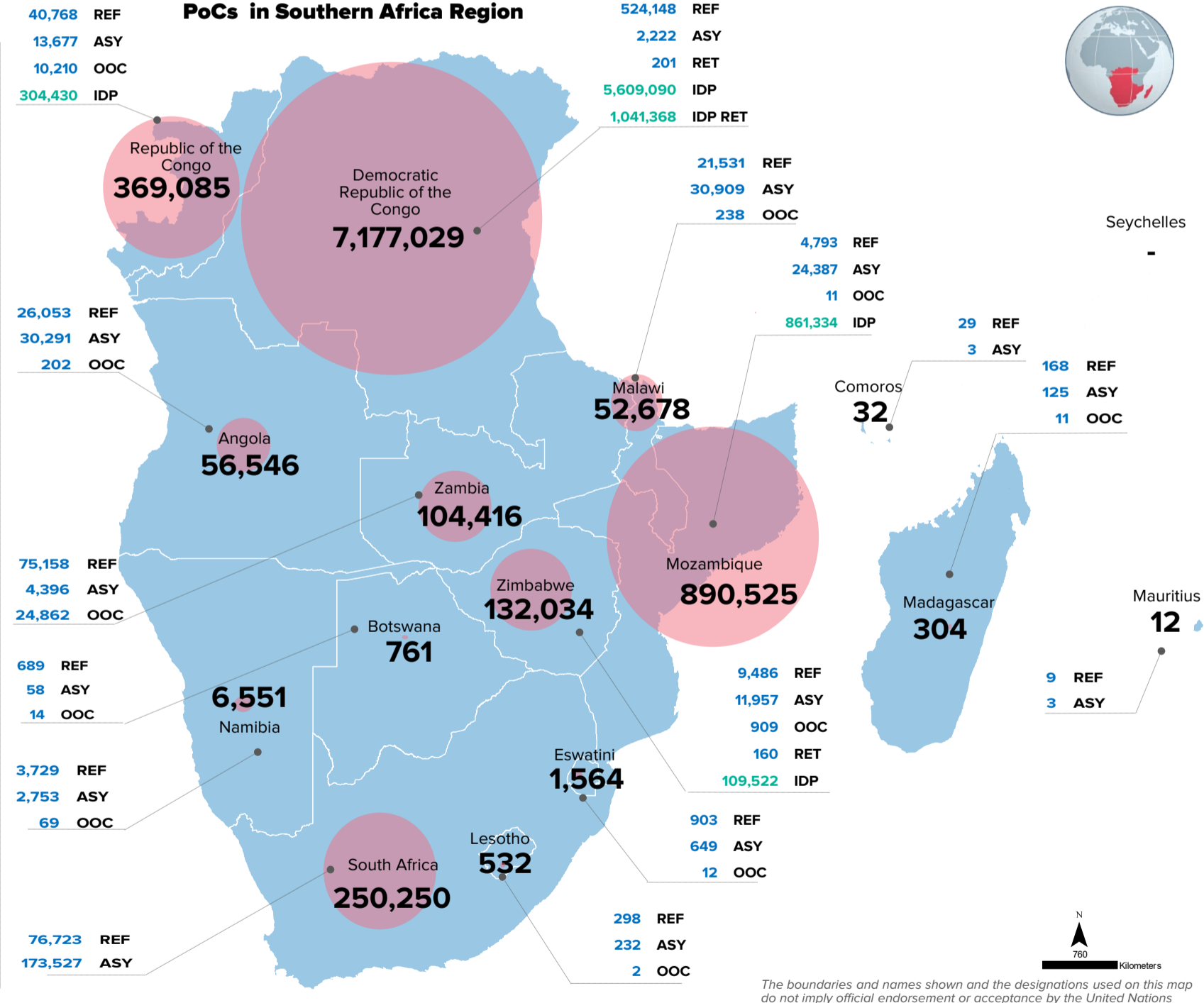
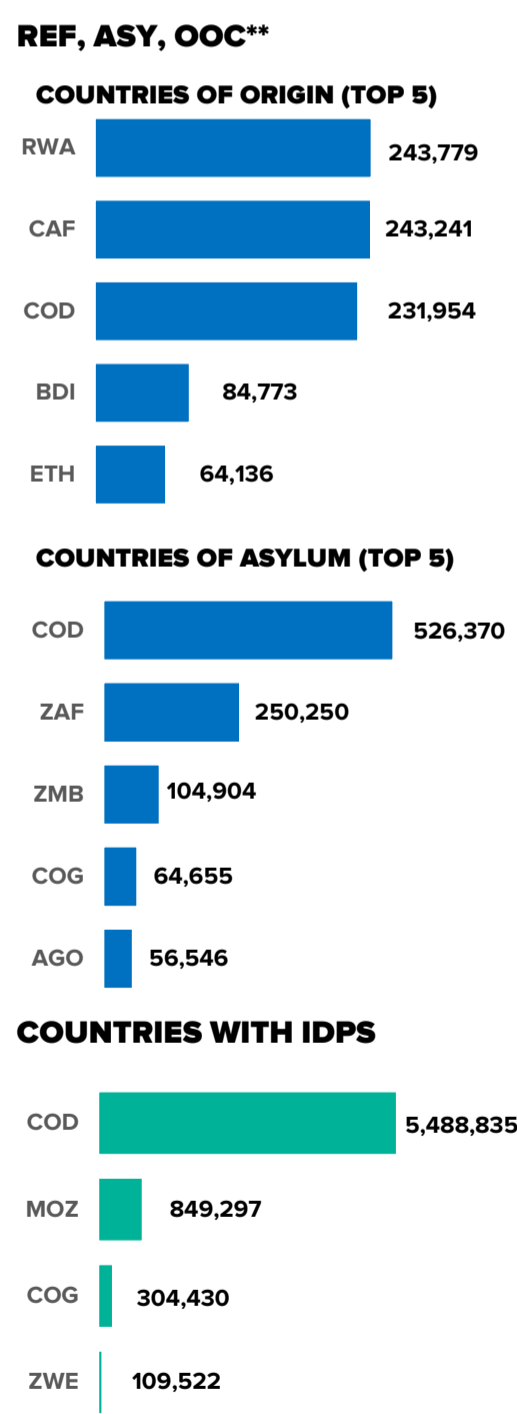
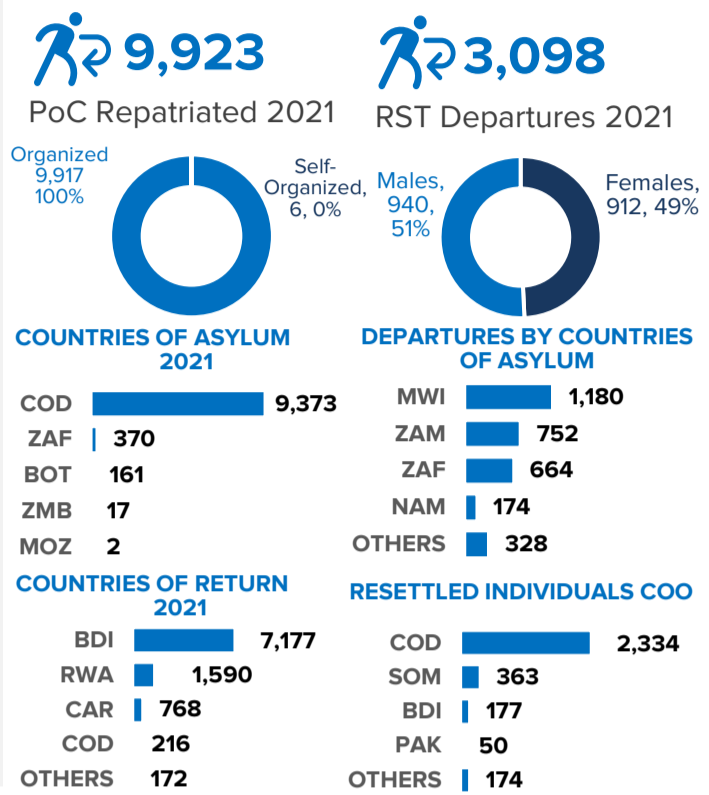
**AGE & GENDER\* (POC registered in ProGres V4)**

**CONTEXT**



RBSA Population Statistics are compiled monthly using data from ProgresV3/V4 and external government datasets. External data are statistics as of 30 September 2021 for IDP, IDP Returnees, Repatriation, Returnees, NIIS data from South Africa and Self Settled from Angola, Zambia, DRC and Zimbabwe which is using Progres V3 data.

**DURABLE SOLUTIONS**



\* Includes dis-aggregation for South Africa with 63% males aged 18 - 59 which changes previous averages. \*\*REF=Refugees, ASY= Asylum-seekers, OOC= Others of concern \*\*\*Figure without returnees \*\*\*\*IDP figures not included

Data sources: Government, IOM, UNHCR  
For more information or to contribute, UNHCR RBSA DIMA (rsarbdima@unhcr.org)