

KEY POPULATION STATISTICS

**5.20M**

TOTAL REFUGEES, ASYLUM-SEEKERS AND IDPS

**140,462**

ETHIOPIA REFUGEES AND ASYLUM-SEEKERS IN NEIGHBOURING COUNTRIES

**19,879**

NOV 20 TO DEC 21 BREAKDOWN

**6,031\***

NEW ARRIVALS IN DEC 2021

\* Source: UNHCR operations/proGres v4. Figures susceptible to further updates upon verification and registration in following months.

BY AGE AND GENDER\*



Children (below 18 yrs) **33%**



Women and Children **60%**



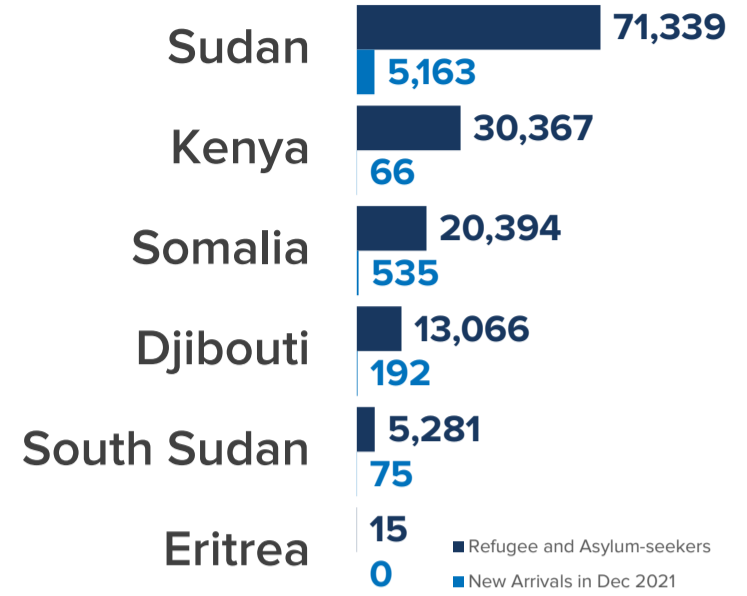
Adults (18-59 yrs) **61%**



Elderly (above 60 yrs) **6%**

\* Percentages from UNHCR's 2020 Annual Statistics Report

BY COUNTRY OF ASYLUM



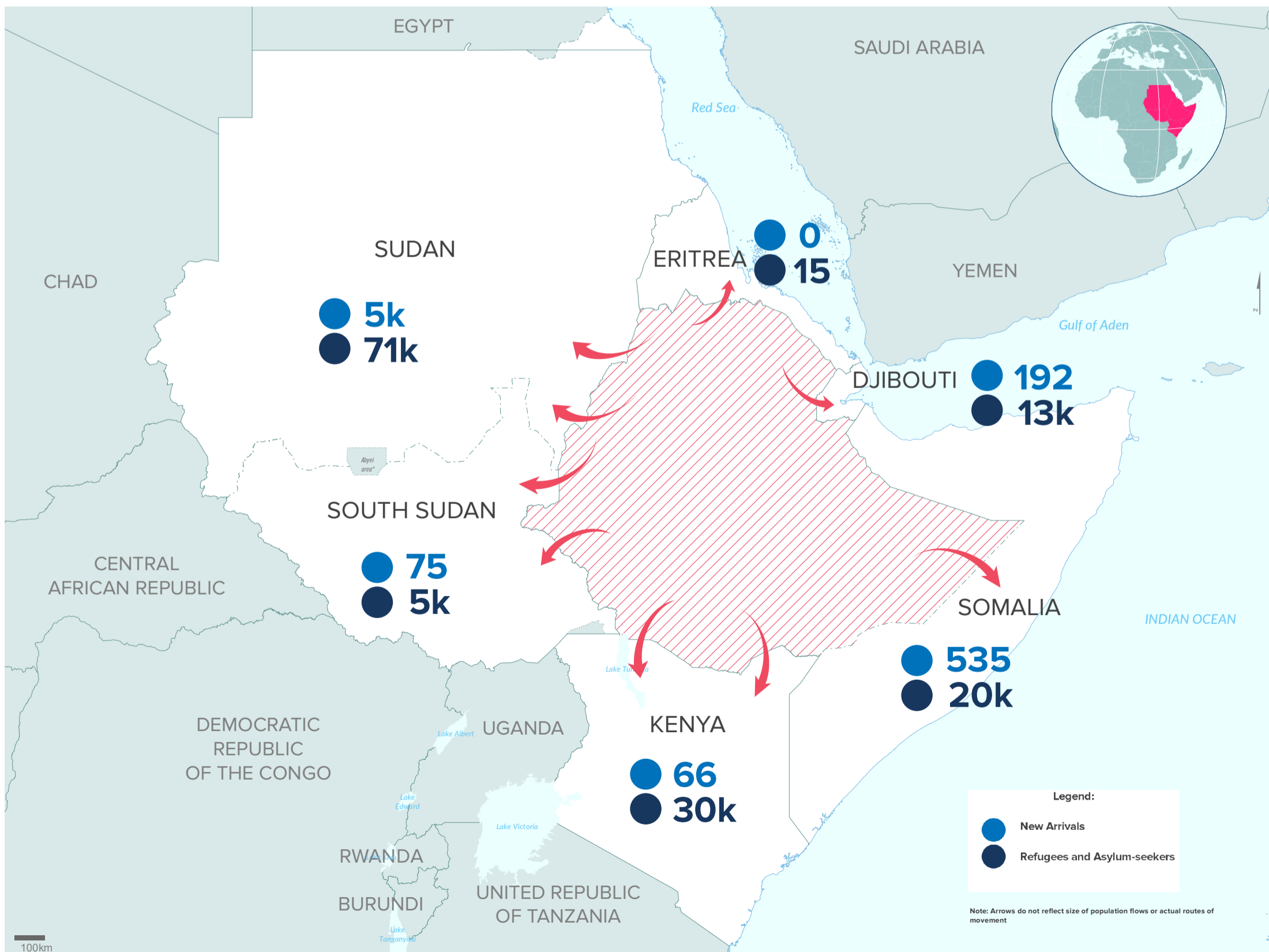
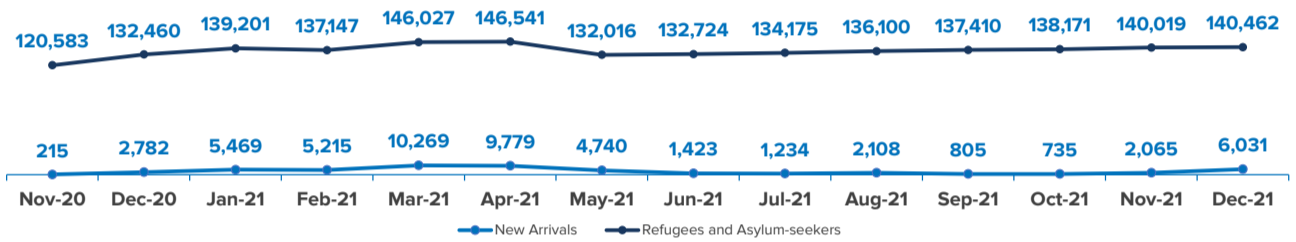
**4.24M**

INTERNALLY DISPLACED PERSONS IN ETHIOPIA

**823,959**

REFUGEES AND ASYLUM-SEEKERS HOSTED IN ETHIOPIA

ETHIOPIAN PoCs DISPLACEMENT TRENDS Nov 20 to Dec 21



The boundaries and names shown and the designations used on this map do not imply official endorsement or acceptance by the United Nations. Final boundaries between the Republic of Sudan and the Republic of South Sudan and Somalia and Ethiopia have not yet been determined. Final status of the Abyei area is not yet determined.

Creation date: 25 Jan 2022 Sources: Geographic data: UNCS. Population statistics: UNHCR Monthly Statistical Reports 31 December 2021 or latest available. Statistics should be considered provisional and subject to change.

Author: UNHCR Regional Bureau for East and Horn of Africa and Great Lakes Feedback: DIMAEHAGL@unhcr.org