



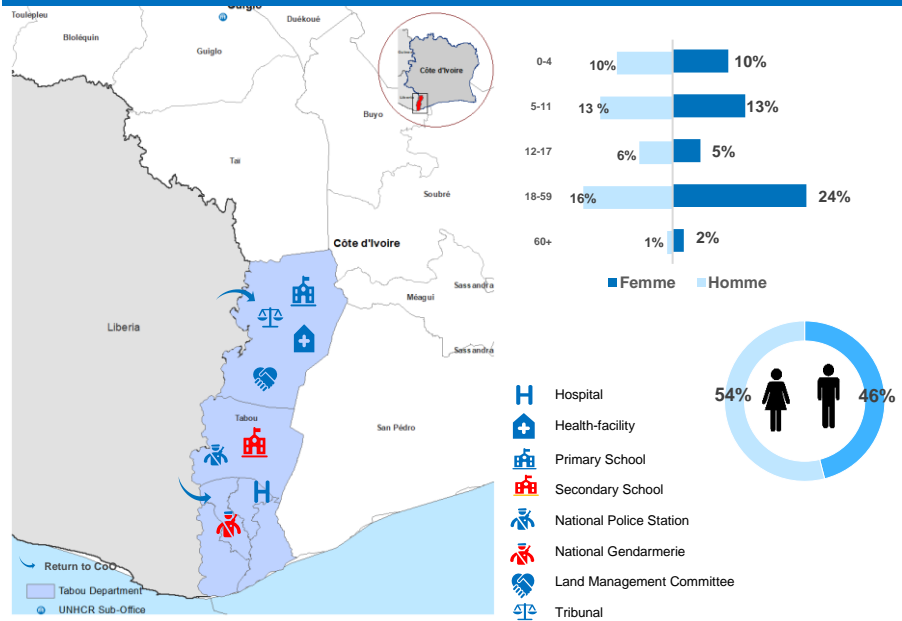
RETURNEES IN 2021 IN THE DEPARTMENT

3,211
 Persons returned to the department in 2021

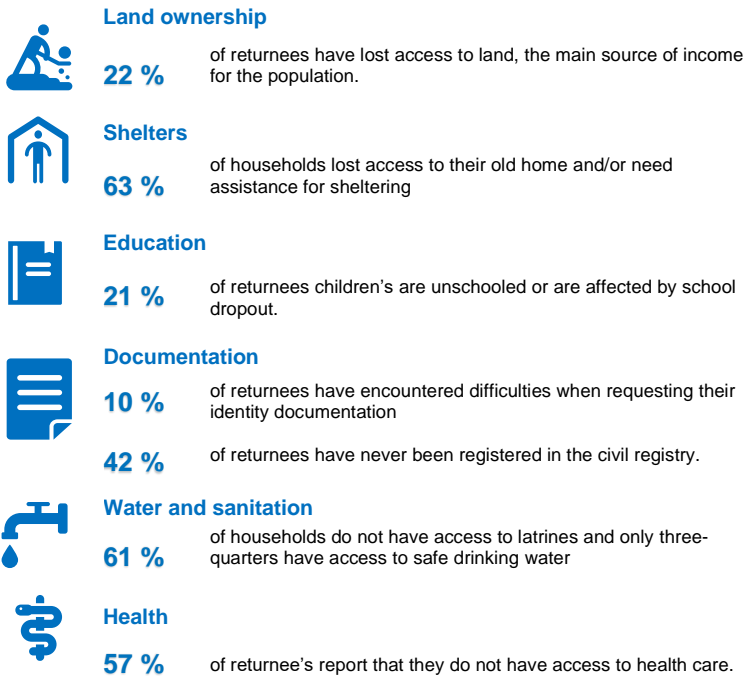
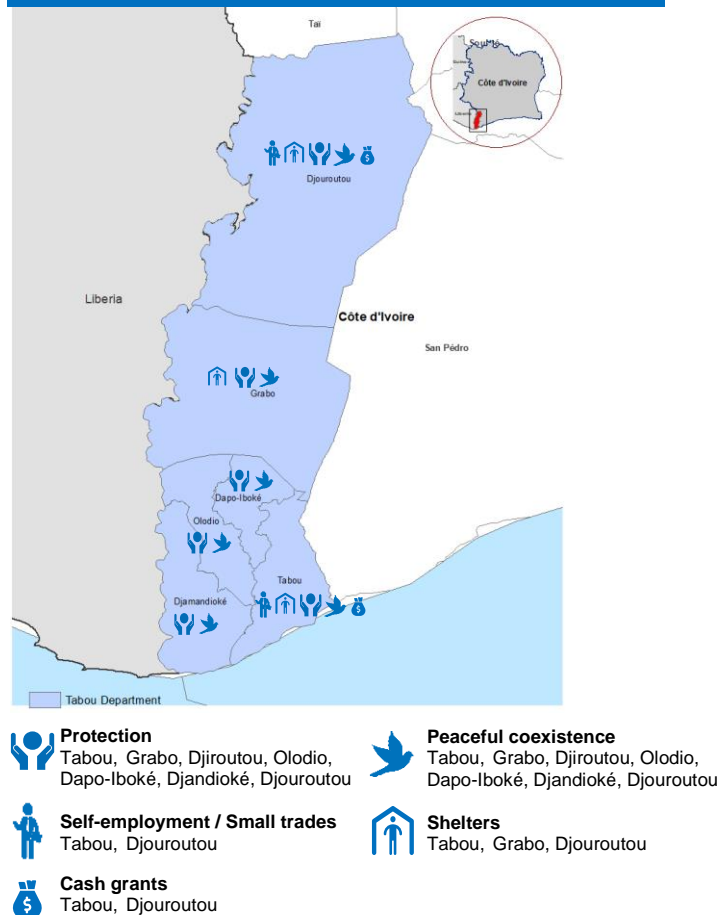

809
 Households


1780
 Children

MAIN COUNTRY OF ASYLUM OF RETURNEES IN 2021

Libéria
3,087
MAPPING AND DEMOGRAPHIC PROFILE, BASIC SOCIAL SERVICES IN TABOU DEPARTMENT(2021)

GENERAL SITUATION IN THE DEPARTMENT

The general situation in the department of Tabou is calm and peaceful in terms of security. It supported the holding of household surveys. No security incidents targeting one or more returnees since the resumption of repatriation in July 2021 have been reported in Tabou and surroundings. The returnees go about their business in peace.

PRIORITY NEEDS OF RETURNEES

MAIN REINTEGRATION ACTIVITIES IN THE DEPARTMENT OF DANANE

MAIN PARTNERS

MAIN FUNDERS

Belgium | Canada | Denmark | France | Germany | Italy | Japan | Netherlands | Private donors Australia | Private donors Republic of Korea | Private donors Sweden | Private donors Republic of Korea | Switzerland | United States of America