

KEY FIGURES

2,182,613

INTERNALLY DISPLACED PERSONS (IDPs)

in North-East, 93% due to insurgency, 6% communal clashes and 1% natural disaster. 1,993,263 in Borno, Adamawa and Yobe states.
 Source: DTM - Round 38, Oct 2021.

833,006

INTERNALLY DISPLACED PERSONS (IDPs)

IDPs, 453,568 are in North-West while 379,808 are in North-Central
 Source: DTM - Round 7 for Northwest and Northcentral, Sep. 2021.

1,918,063

RETURNEES

Cumulative since 2015, 155,000 or 8% are former refugees who returned spontaneously with some passing through IDP situation.
 Source: DTM - Round 38, Oct 2021. Since beginning of 2021 UNHCR has registered 10,814 spontaneous refugee returns. In addition 3,880 refugees returned through voluntary repatriation from Cameroon in 2021.

324,948

NIGERIAN REFUGEES REGISTERED IN CAMEROON, CHAD, AND NIGER

Source: UNHCR Oct 2021.

77,554

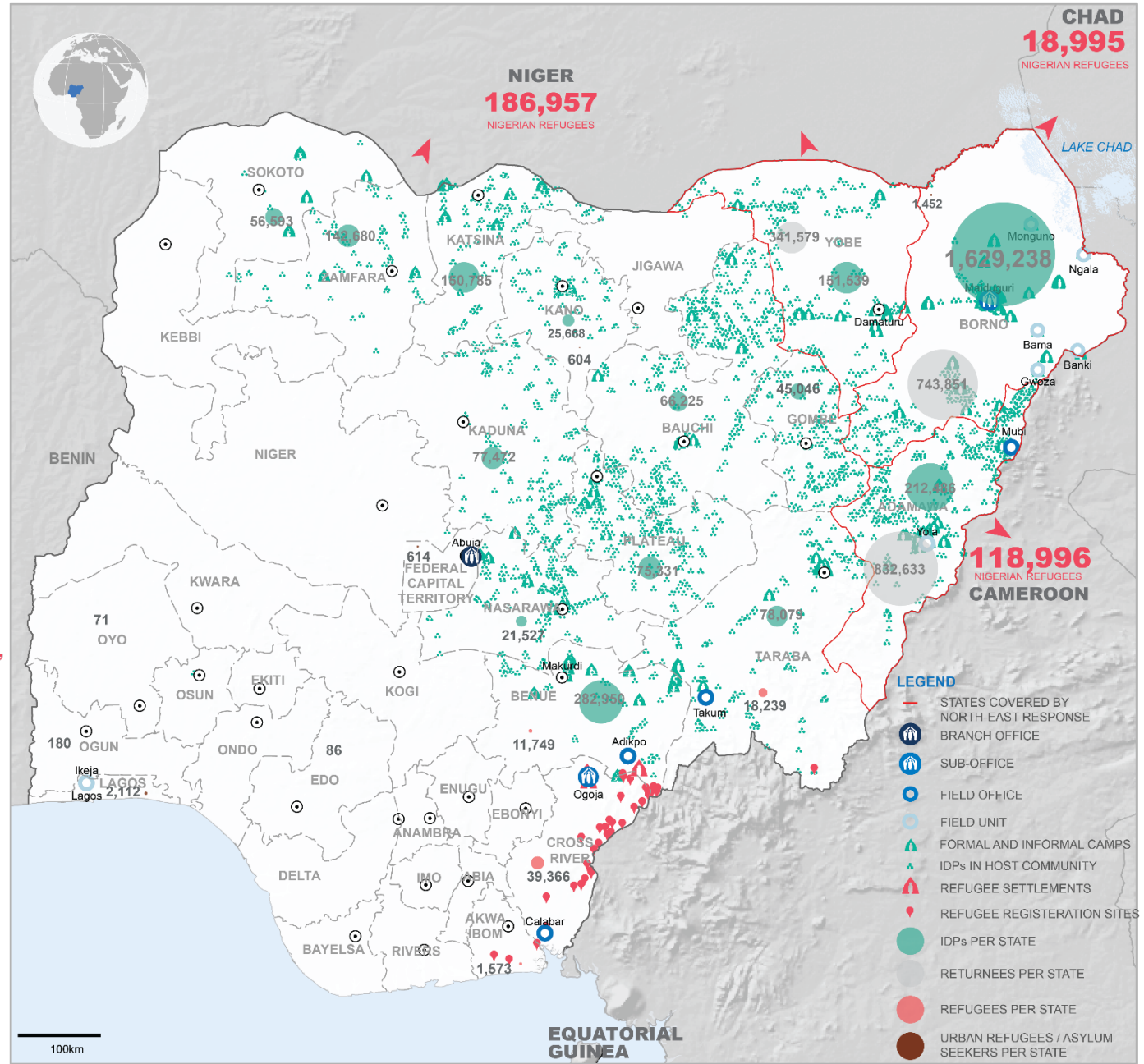
REFUGEES AND ASYLUM-SEEKERS REGISTERED IN NIGERIA

Source: UNHCR Nov 2021.

SITUATION OVERVIEW

The situation in the North-East remains largely volatile with attacks in several Local Government Areas (LGAs) in Borno, Yobe and Adamawa (BAY) States continuing to cause displacement and casualties among civilians, IDPs and returnees.

In addition, Cameroonians affected by the crisis between the government and activists calling for secession of the anglophone region are seeking refuge in Nigeria. Their arrival has since presented a new dimension to the already complex humanitarian situation.



DISCLAIMER: The boundaries and names shown and the designations used on this map do not imply official endorsement or acceptance by the United Nations.

UPDATED: November 2021

SOURCES: UNHCR, IOM DTM, HDX FEEDBACK: nigabim@unhcr.org