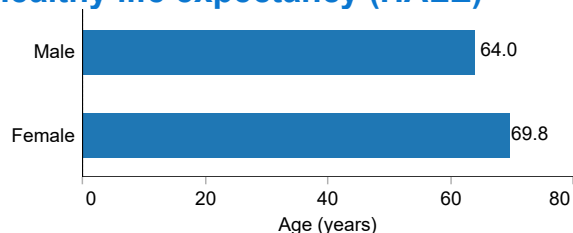


THAILAND

Population (000s) ¹ 69 800	Urban population ² 49.9%	Poverty ³ (PPP < US\$1.90 a day) 0.0%	GDP per capita ³ (Current US\$) 7808.2	Current health expenditure as share of GDP ⁴ 3.7%
---	---	---	--	---

Monitoring the health SDG goal: Indicator of overall progress

Healthy life expectancy (HALE)



Healthy life expectancy* (HALE) represents the average equivalent number of years from birth of living in good health without disease or injury. Females have 5.8 years longer HALE than males.

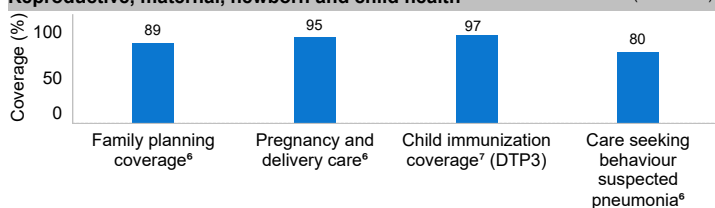
Universal health coverage (UHC): At the centre of the health goal

The goal of UHC is that all people and communities receive the health care they need, without suffering financial hardship. Monitoring UHC requires measuring **health service coverage** and **financial protection** (SDG target 3.8).

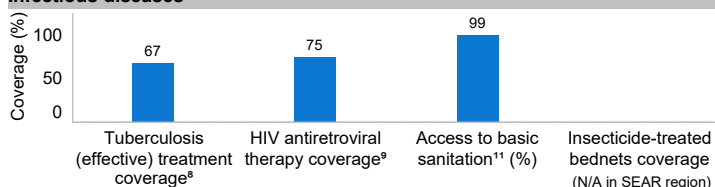
HEALTH SERVICES COVERAGE

The summary measure of essential health services coverage, *service coverage index* of sub-indicators in four main areas: (1) reproductive, maternal, newborn and child health; (2) infectious diseases; (3) noncommunicable diseases; (4) service capacity, access and health security.

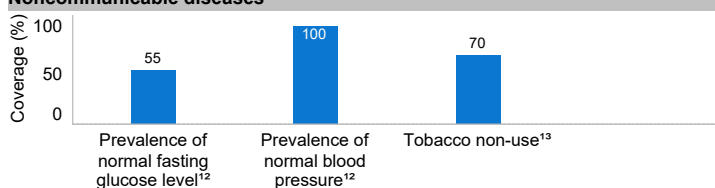
Reproductive, maternal, newborn and child health Latest available data (2010-2019)



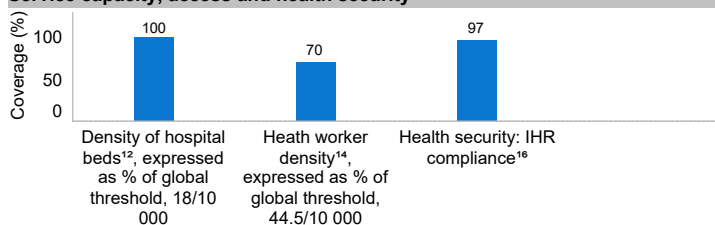
Infectious diseases



Noncommunicable diseases



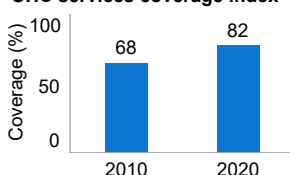
Service capacity, access and health security



UHC services coverage index of essential health services

To provide a summary measure of coverage, an index of national service coverage is computed by taking the geometric mean of service coverage values across the sub-indicators. The UHC coverage index ranges from 0% to 100%, with 100% implying full coverage across a range of services.

UHC services coverage index*



FINANCIAL PROTECTION

Financial protection is measured through two indicators: (1) impoverishment, and (2) catastrophic health expenditure.

Impoverishment: **0%**** or **approximately 149 200** people are being pushed into poverty (at US\$1.90 level) because of out-of-pocket health spending.¹⁷

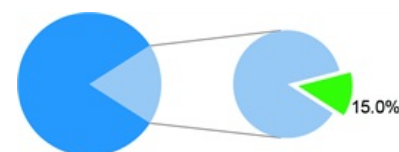
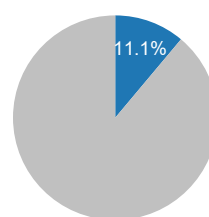
Catastrophic expenditure on health*: **2.2%** of people spent more than 10% of their household's total expenditure on health care.¹⁷

**Impoverishment data are not reported at PPP \$1.90 level

Out-of-pocket expenditure⁴

In most cases, high percentage of out-of-pocket expenditure out of the total health expenditure is associated with low financial protection.

Public spending on health⁴ is determined by the capacity of the government to raise revenues and the level of priority it attaches to the health sector.

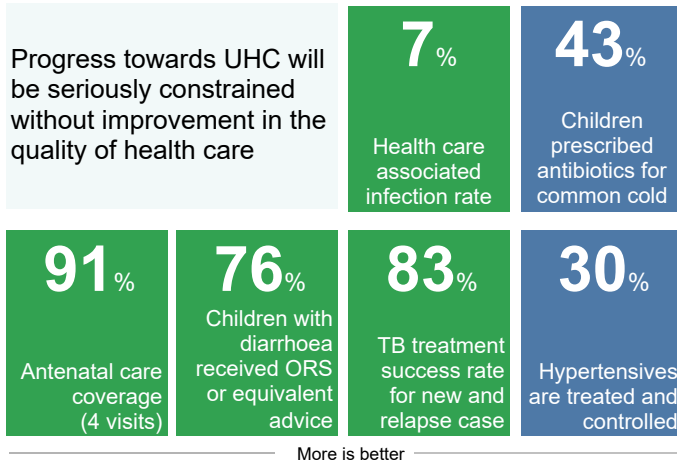


Estimated government expenditure on health, 2018

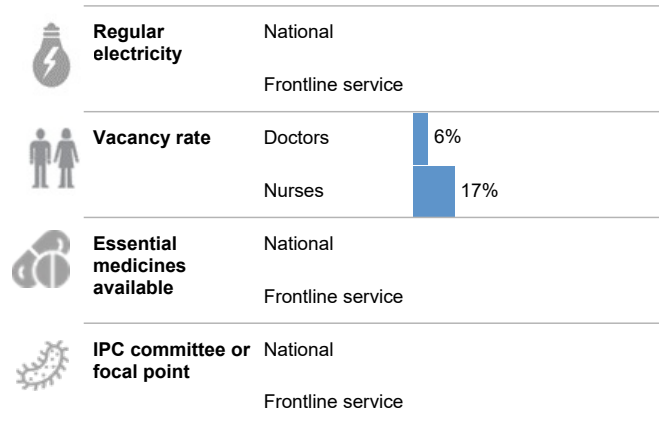
This profile provides an overview of the current status of progress towards the 13 targets under the health Sustainable Development Goal #3 (SDG3) plus other selected health-related indicators. Twenty-five of the indicators are noted with an asterisk (*), which Member States in the WHO South-East Asia Region have designated to be the most common indicators of importance for the Region. This profile also includes all of the SDG indicators for the WHO Thirteenth General Programme of Work 2019–2023 (GPW13)

Quality of health care: cleaner and safer health facilities

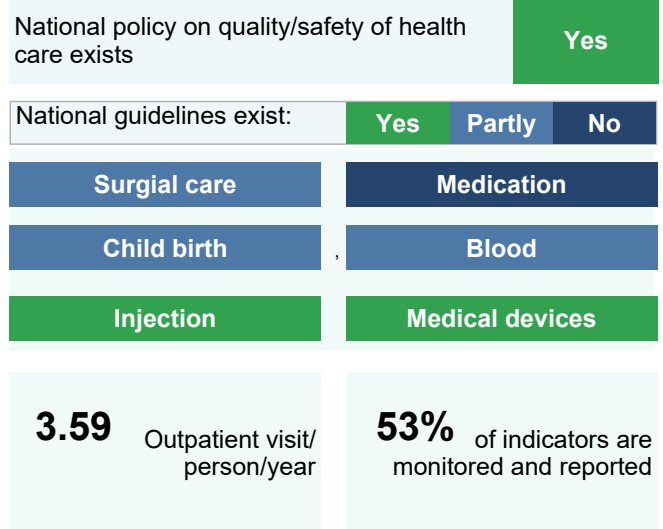
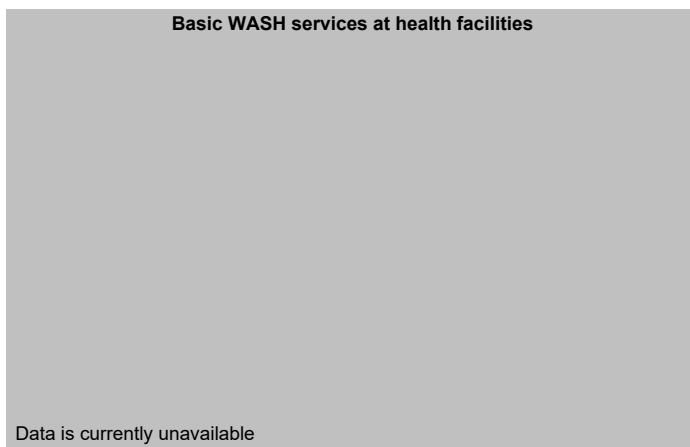
Effective services



Safe facility

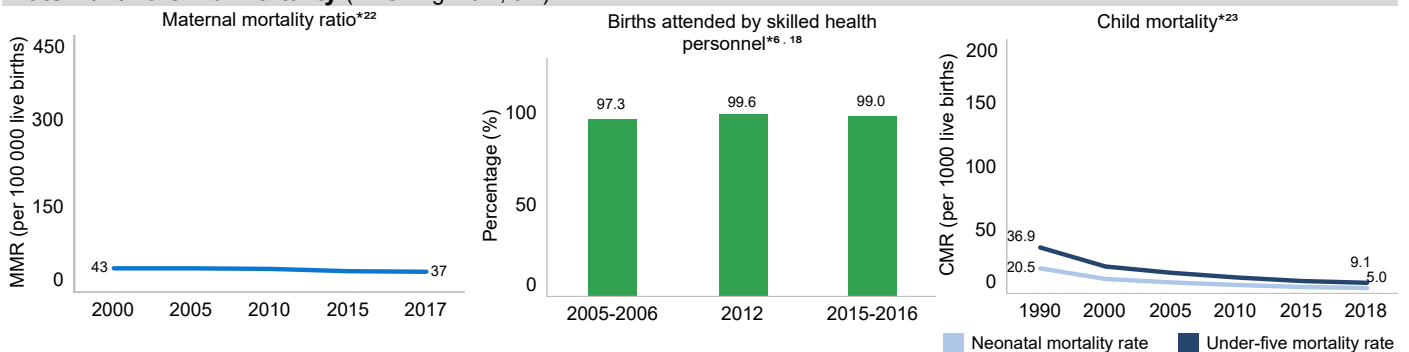


Clean facility

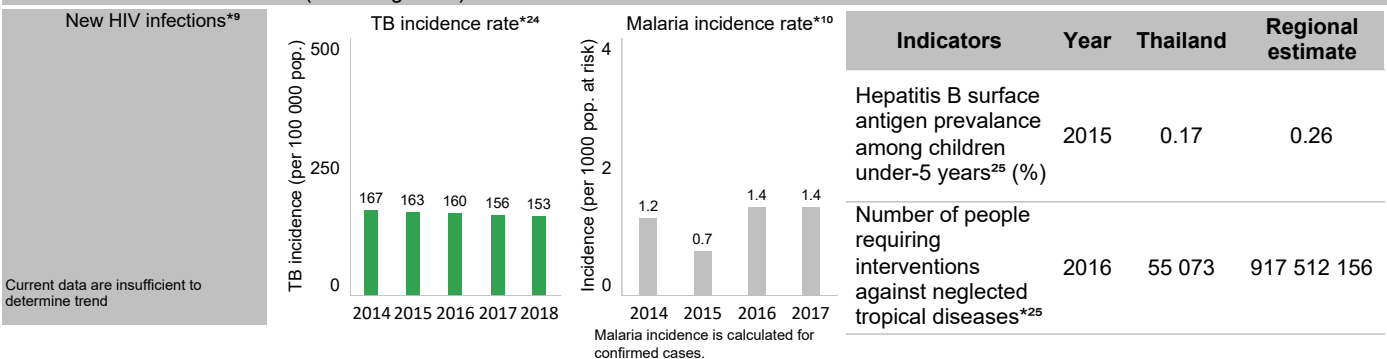


SDG 3: Health targets

Maternal and child mortality (SDG target 3.1, 3.2)



Communicable diseases (SDG target 3.3)



Noncommunicable diseases and injuries

Indicators	SDG target	Year	Thailand	Regional estimate
Probability of dying from any of CVD, cancer, diabetes, CRD between age 30–70* ²⁵	3.4.1	2016	14.5	23.1
Suicide mortality rate (per 100 000 population)	3.4.2	2016	14.4	13.2
Total alcohol per capita (≥15 years of age) consumption (litres of pure alcohol)	3.5.2	2018	8.3	4.4
Road traffic mortality rate (per 100 000 population)	3.6.1	2016	32.7	20.7

Sexual and reproductive health

Proportion of married or in–union women of reproductive age who have their need for family planning satisfied with modern methods	3.7.1	2015	89	75.3
Adolescent birth rate (per 1000 women aged 15–19 years)	3.7.2	2015	51	26.1

Mortality due to environmental pollution

Age-standardized mortality rate attributed to household and ambient air pollution (per 100 000 population)	3.9.1	2016	61.5	165.8
Mortality rate attributed to exposure to unsafe WASH services ²⁵ (per 100 000 population)	3.9.2	2016	3.5	15.4
Mortality rate attributed to unintentional poisoning ²⁵ (per 100 000 population)	3.9.3	2016	0.4	1.8

Tobacco use

Prevalence of tobacco use among 15 years and older– Female	3.a.1	2011	7.6	–
Prevalence of tobacco use among 15 years and older– Male	3.a.1	2011	47.2	–

Essential medicines and vaccines

DTP3 immunization coverage among 1-year-olds	3.b.1	2018	97	89
MCV2 immunization coverage by the nationally recommended age* ²⁵	3.b.1	2018	87	80
PCV3 immunization coverage among 1-year-olds	3.b.1	2018	–	17
HPV immunization coverage estimates among 15-year-old girls	3.b.1	2018	–	1
Total net official development assistance to medical research and basic health per capita (constant 2014 US\$)	3.b.2	2018	0.29	0.39
Proportion of health facilities that have a core set of relevant essential medicines available and affordable on a sustainable basis	3.b.3	-	–	–

Health workforce

Health worker density* ¹⁴ (per 10 000 population)	3.c.1	2018	35.6	26
--	-------	------	------	----

National and global health risks

Average of 13 International Health Regulations Core Capacity scores*	3.d.1	2019	85	61
--	-------	------	----	----

Other health-related SDGs

General government health expenditure

Domestic general government health expenditure as percentage of general government expenditure	1.a	2017	15	8.1
--	-----	------	----	-----

Child nutrition

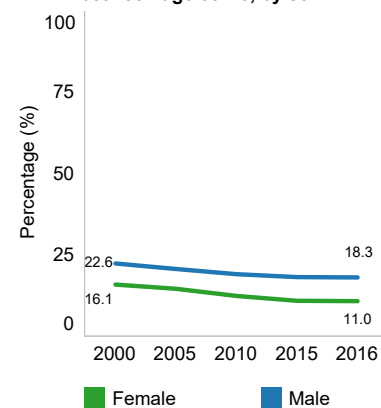
Prevalence of stunting in children under-5*	2.2.1	2015	10.5	31
Prevalence of wasting in children under-5*	2.2.2	2015	5.4	14.7
Prevalence of overweight in children under-5*	2.2.3	2015	8.2	3
Prevalence of anaemia in women of reproductive age (15–49 years)	2.2.4	2016	31.8	45.8

Intimate Partner Violence

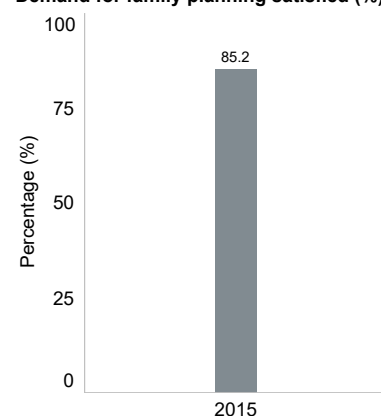
Proportion of ever-partnered women and girls aged ≥15 years subjected to physical, sexual or psychological violence by a current or former intimate partner in the previous 12 months	5.2	2017	–	–
---	-----	------	---	---

Note: En dash (–) implies relevant data are not available

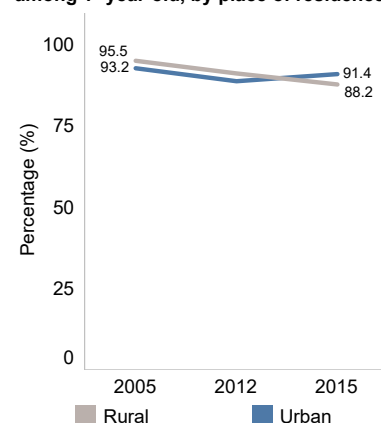
Probability of dying from any of CVD, cancer, diabetes, CRD between age 30–70, by sex



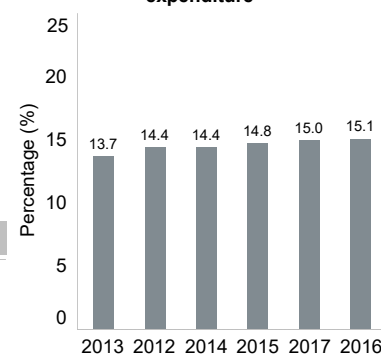
Demand for family planning satisfied (%)



DTP3 immunization coverage among 1–year-old, by place of residence



Domestic general government health expenditure as % of general government expenditure



Drinking water services and sanitation

Indicators	SDG target	Year	Thailand	Regional estimate
Proportion of population using safely managed drinking water services	6.1	2017	–	–
Proportion of population using safely managed sanitation services	6.2.1	2017	–	–
Proportion of population using a handwashing facility with soap and water	6.2.2	2017	84	60
Amount of water- and sanitation-related official development assistance that is part of a government-coordinated spending plan (constant 2016 US\$ millions)	6.3	2018	1.56	1414.13

Clean household energy

Proportion of population with primary reliance on clean fuels and technology	7.1	2018	79	50
--	-----	------	----	----

Ambient air pollution

Annual mean concentrations of fine particulate matter (PM2.5) in urban areas (µg/m3)	11.6	2016	26.6	57.3
--	------	------	------	------

Homicide and conflicts

Mortality rate due to homicide (per 100 000 population)	16.1.1	2017	4.1	3.9
---	--------	------	-----	-----

Birth registration

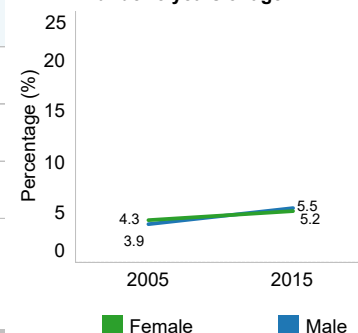
Birth registration coverage ^a	16.9.1	2015	99.5	–
--	--------	------	------	---

Cause-of-death data

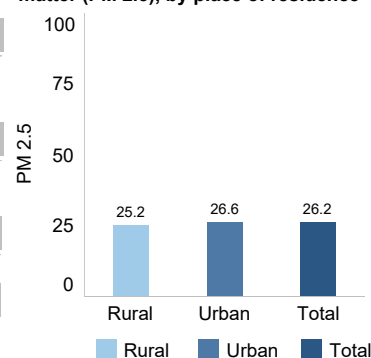
Completeness of cause-of-death data	17.19	2015	87	10
-------------------------------------	-------	------	----	----

Note: En dash (–) implies relevant data are not available

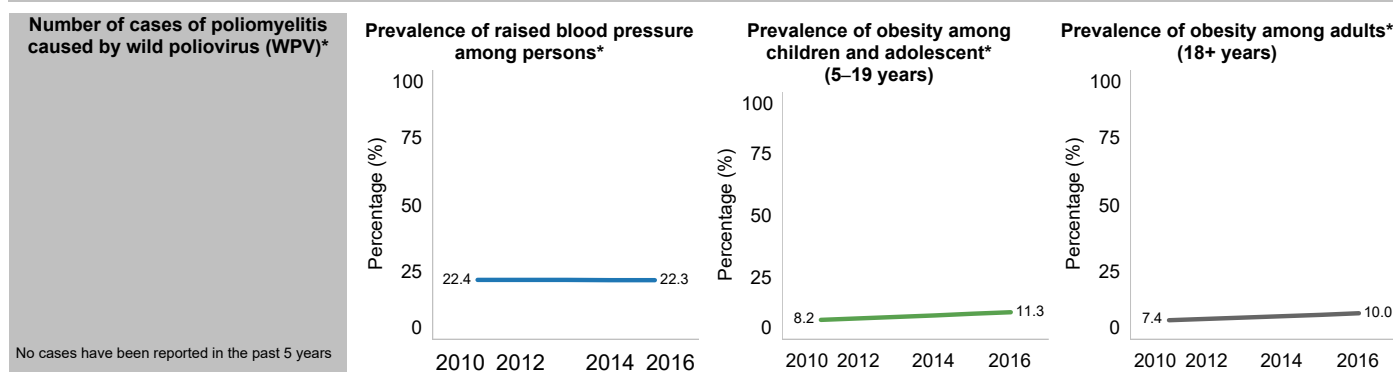
Prevalence of wasting among children under-5 years of age



Concentration of fine particulate matter (PM 2.5), by place of residence



Additional SDG indicators used to monitor the GPW13 impact



References

- World population prospects: the 2019 revision. New York: United Nations, Department of Economic and Social Affairs, Population Division; 2019 (<https://population.un.org/wpp/>, accessed 29 June 2019).
- World urbanization prospects: 2018 revision. New York: United Nations, Department of Economic and Social Affairs, Population Division; 2018 (<https://population.un.org/wpp/>, accessed 29 June 2019).
- World Bank. (<https://data.worldbank.org/>, accessed 28 May 2019)
- Global health expenditure database. Geneva: World Health Organization; June 2019
- Global health estimates 2016: Life expectancy, 2000–2016. Geneva: World Health Organization; 2018 (https://www.who.int/gho/mortality_burden_disease/life_tables/en/, accessed 29 June 2019).
- Bangladesh Demographic and Health Survey 2014. Dhaka, Bangladesh, and Rockville, Maryland, USA: NIPORT, Mitra and Associates, and ICF International. (<https://dhsprogram.com/pubs/pdf/FR311/FR311.pdf>, accessed 29 June 2019)
- WHO/UNICEF estimates of national immunization coverage. (http://apps.who.int/immunization_monitoring/globalsummary/countries?countrycriteria%5Bcountry%5D%5B%5D=BGD, accessed 29 June 2019)
- Global tuberculosis report 2018. Geneva: World Health Organization; 2018 (https://www.who.int/tb/publications/global_report/en/, accessed 15 March 2019).
- UNAIDS/AIDSINFO [Online database]. (<http://aidsinfo.unaids.org/>, accessed 29 June 2019)
- Calculated. World Malaria Report 2018. Geneva: World Health Organization; 2018 (<https://www.who.int/malaria/publications/world-malaria-report-2018/en/>, accessed 15 March 2019).
- WHO/UNICEF Joint Monitoring Programme estimate 2015.
- Tracking universal health coverage: 2017 global monitoring report
- Global Adult Tobacco Survey data (GATS). (<https://www.who.int/tobacco/surveillance/survey/gats/bgd/en/>, accessed 3 July, 2019)
- HRH profiles 2018
- Bangladesh Service Provision Assessment (SPA) Survey 2014. (<https://dhsprogram.com/pubs/pdf/SPA23/SPA23.pdf>, accessed 29 June 2018)
- International Health Regulations (2005) Monitoring Framework [online database], Global Health Observatory (GHO) data. Geneva: World Health Organization (<https://www.who.int/gho/ihf/en/>, accessed 21 March 2019).
- SEARO staff estimates from (Bangladesh) Household Income and Expenditure Survey 2016
- Bangladesh DHS Survey 1999, Bangladesh DHS Survey 2004, Bangladesh DHS Survey 2007
- Calculated. Ministry of Health and Family Welfare. Health Bulletin. Dhaka: Management Information System/ Directorate General of Health Services; 2017. (http://www.dghs.gov.bd/images/docs/Publications/HB%202016%202nd%20edition%2013_01_17.pdf – accessed 29 June 2019)
- WHO. Global Health Observatory (GHO) (<https://www.who.int/gho/en/> - accessed 29 June 2019)
- Ministry of Health and Family Welfare. Health Bulletin 2017. Dhaka: Management Information System/ Directorate General of Health Services; 2018. (http://www.dghs.gov.bd/images/docs/Publications/HealthBulletin2017Final13_01_2018.pdf22, accessed 29 June 2019)
- Trends in maternal mortality: 1990 to 2015: estimates by WHO, UNICEF, UNFPA, World Bank Group and the United Nations Population Division. Geneva; 2015 (https://apps.who.int/iris/bitstream/handle/10665/194254/9789241565141_eng.pdf?jsessionid=56B6C12830EA6EA8CD0F30A8433E8FC3?sequence=1, accessed 28 May 2019). See for Maternal Mortality Ratio. Country reported value: 2017=172; 2016=178, 2015=181, 2014=193, 2013=197 Data source: Bangladesh Sample Vital Statistics
- Levels & trends in child mortality: report 2017: estimates developed by the UN Inter-agency Group for Child Mortality Estimation. New York (NY), Geneva and Washington (DC): UNICEF, World Health Organization, World Bank, United Nations; 2017 (<http://www.childinfo.org/>, accessed 28 May 2019). See for under-five mortality. Country reported value: 2017=31, 2016=35, 2015=35; 2014=38, 2013=41 Data source: Bangladesh Sample Vital Statistics. See for neonatal mortality rate. Country reported value: 2017=17, 2016=19, 2015=20, 2014=21, 2013=20. Data Source: Bangladesh Sample Vital Statistics
- WHO Global Tuberculosis database [online]. (<https://www.who.int/tb/country/data/download/en/>, accessed 29 June 2019).
- World Health Statistics 2019. (<https://apps.who.int/iris/bitstream/handle/10665/324835/9789241565707-eng.pdf?ua=1>, accessed 28 May 2019)
- See for suicide mortality rate. Country reported value: 2016=14.7 Data Source:
- See for road traffic mortality rate. Country reported value: 2016=14.4. Data Source: Bangladesh Health Injury Survey 2016
- See for Annual mean concentrations of the particulate matter (PM 2.5). Country reported value 2014=107, 2015=94, 2013=57. Data Source: Administrative Data taken from Ministry of Environment and Forest