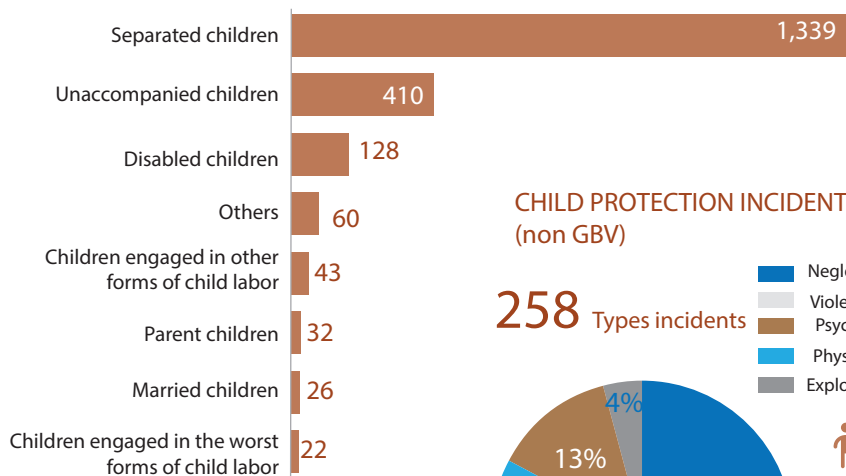
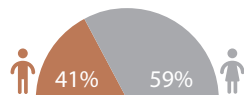


## CHILDREN AT RISK IDENTIFIED

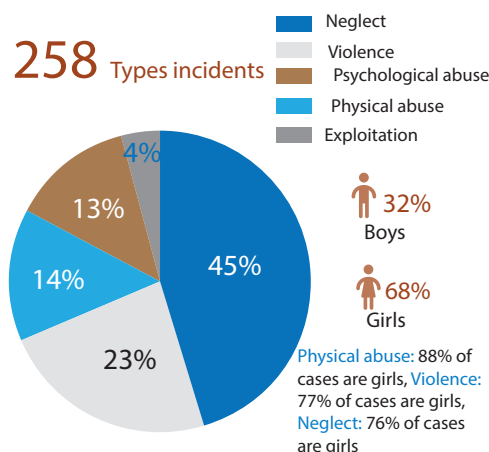
**2,060**

Child at risk identified

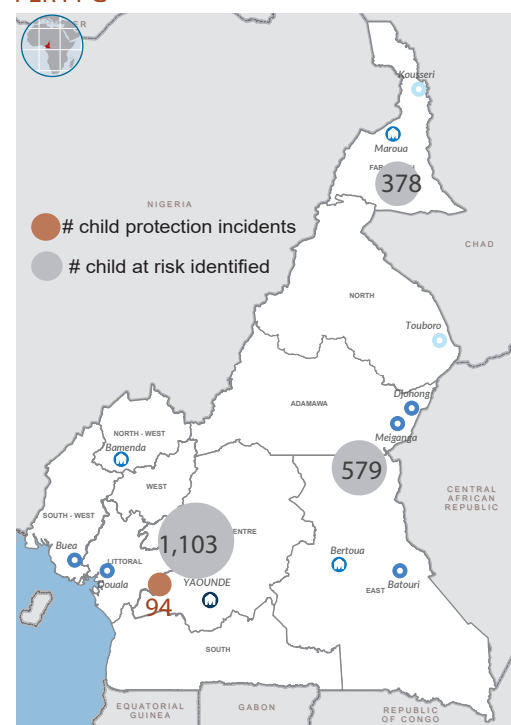


Children in conflict with the law (20), Pregnant teens (13), Children placed in host family (10), Children placed in institutions (8), Child head of household (7), Children associated with armed forces or groups (2),

## CHILD PROTECTION INCIDENTS (non GBV)

**258** Types incidents


## CHILDREN AT RISK AND INCIDENTS PER PPG

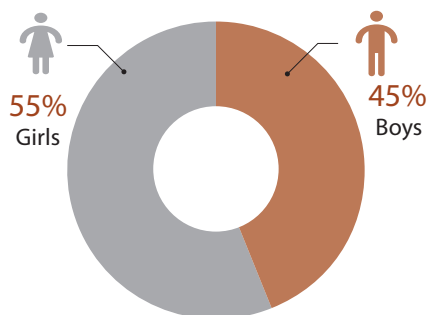


## PREVENTION AND RESPONSE ACTIVITIES

### Child protection awareness activities

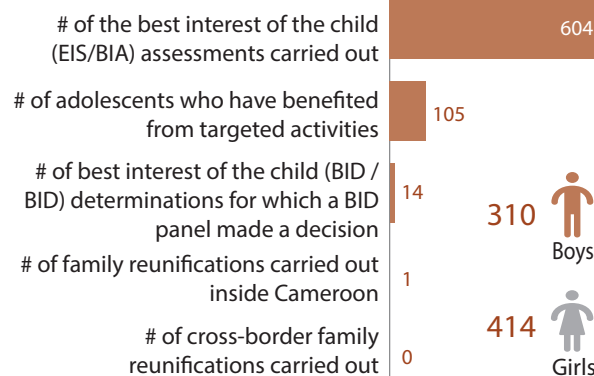
**64,397**

People sensitized during awareness-raising activities



# of people made aware of child protection issues (awareness campaigns, educational talks, etc.)

### Best interest of the child procedures

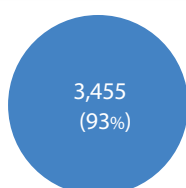
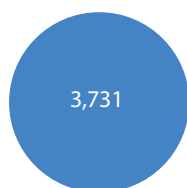


### Issuance of birth documents

In need

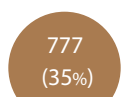
Having benefited

# Children under 6 months of age who have obtained a birth certificate during the past month through the regular procedure



Girls (52%)  
Boys (48%)

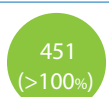
# People who obtained a birth certificate through a supplementary judgment procedure during the past month



Girls (57%)  
Boys (43%)

# People born outside Cameroon who have obtained an ATLAN

213

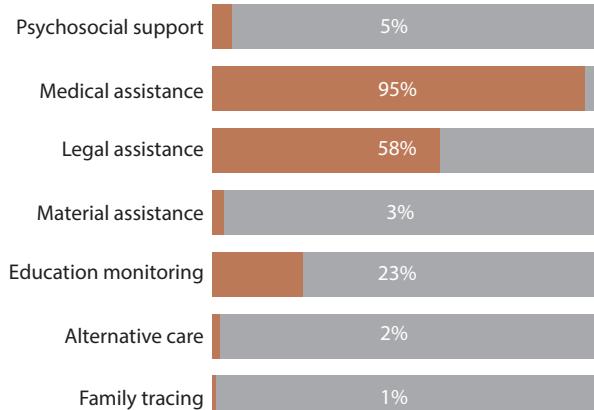


Girls (40%)  
Boys (60%)

### Child protection assistance (non-GBV)

Having benefited

In need



PPG\*: Population planning group