

**710,544**  
TOTAL NUMBER OF REFUGEES  
IN THE NEIGHBOURING COUNTRIES

Before the elections, 630,531 CAR refugees were hosted in neighbouring countries and 630,834 persons were internally displaced within CAR.

**332,594**

**121,036**

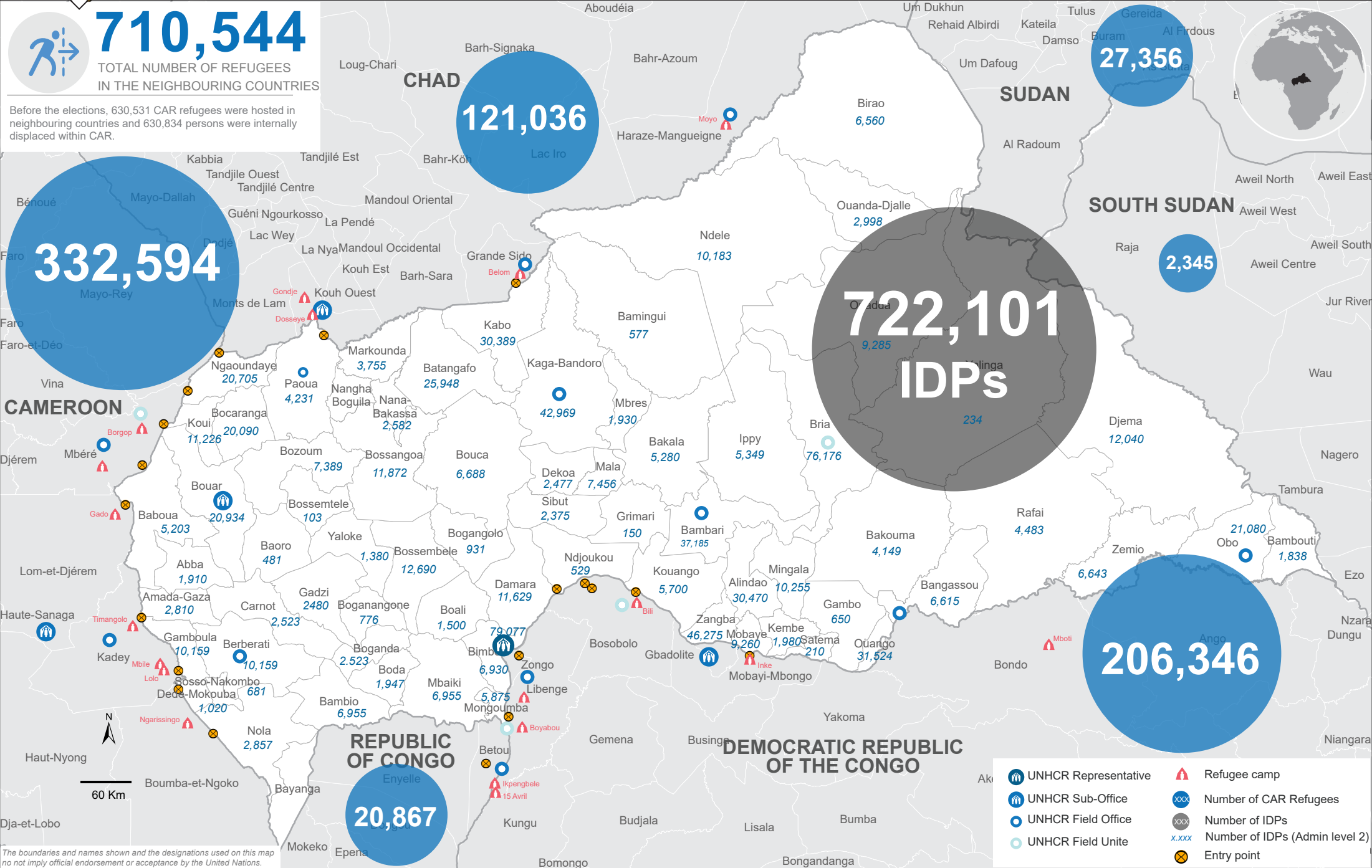
**722,101**  
IDPs










**27,356**

**2,345**

**206,346**

**20,867**



-  UNHCR Representative
-  UNHCR Sub-Office
-  UNHCR Field Office
-  UNHCR Field Unite
-  Refugee camp
-  Number of CAR Refugees
-  Number of IDPs
-  Number of IDPs (Admin level 2)
-  Entry point

The boundaries and names shown and the designations used on this map do not imply official endorsement or acceptance by the United Nations.

Sources: CAR Protection Cluster for IDP figures, UNHCR (for refugees in Cameroon, Chad and Congo), Local Authorities (for refugees in DRC)

Feedback: [rbwcadima@unhcr.org](mailto:rbwcadima@unhcr.org)