

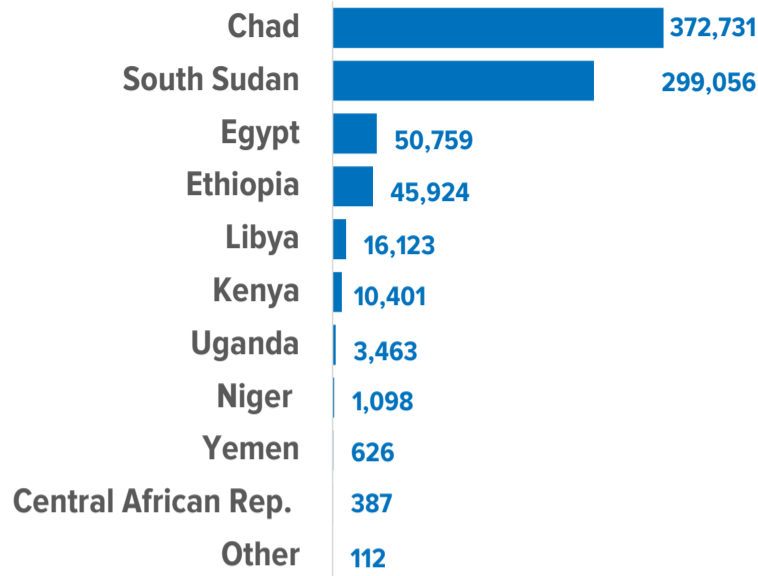
800,680
SUDANESE REFUGEES AND ASYLUM-SEEKERS

2.55M
INTERNALLY DISPLACED IN SUDAN

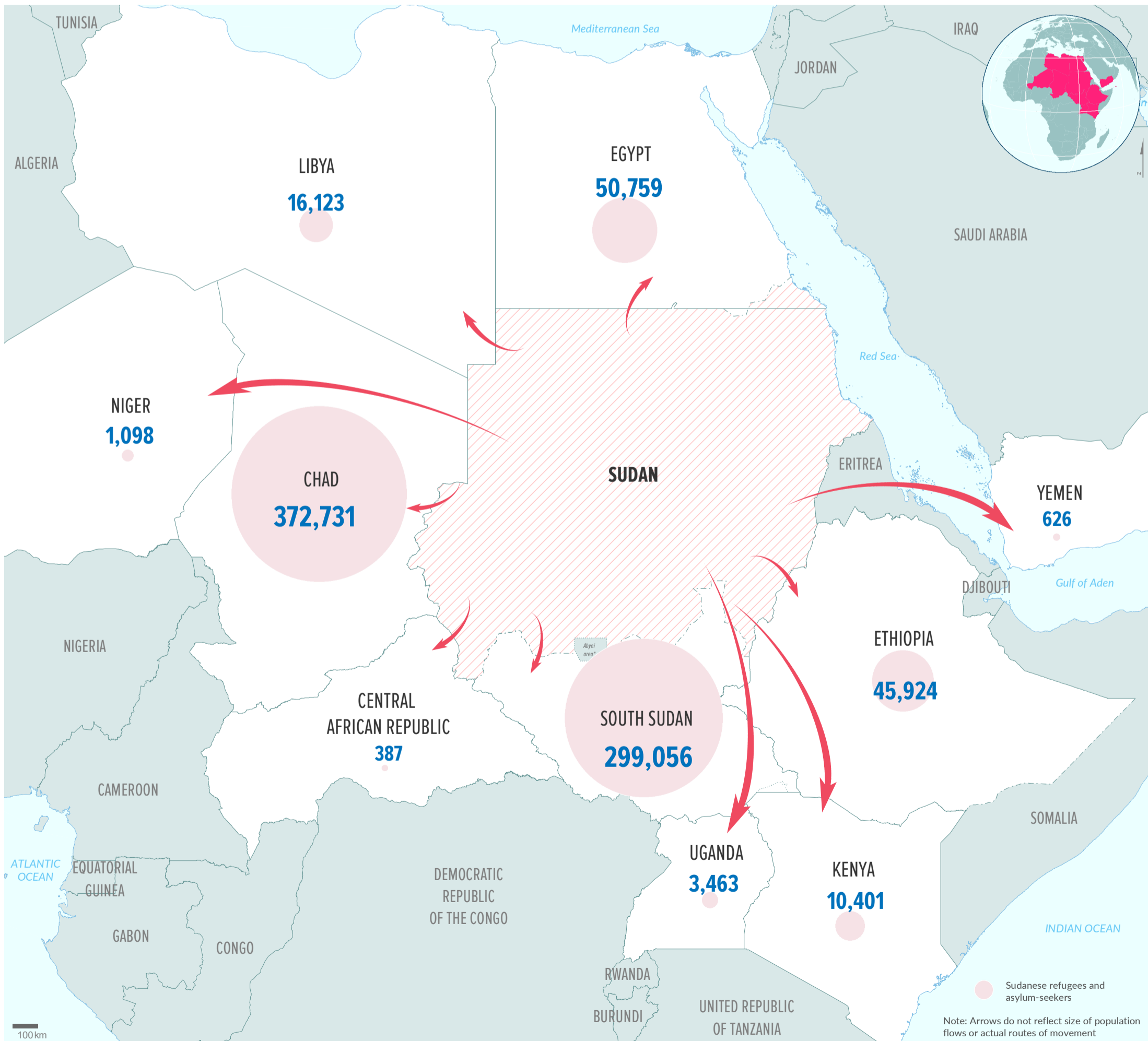
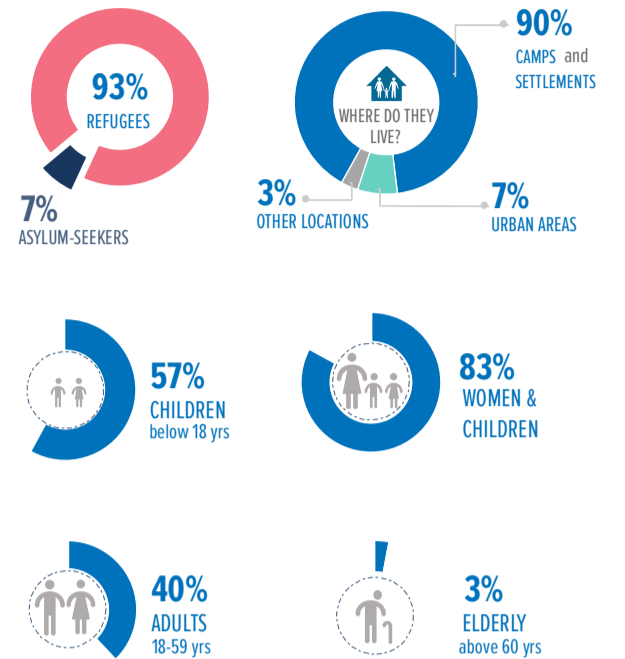
2,060
ASSISTED REFUGEE RETURNEES (2019)

1.1M
REFUGEE AND ASYLUM-SEEKERS IN SUDAN

TOTALS BY HOST COUNTRY



KEY POPULATION STATISTICS



The boundaries and names shown and the designations used on this map do not imply official endorsement or acceptance by the United Nations. Final boundaries between the Republic of Sudan and the Republic of South Sudan and Somalia and Ethiopia have not yet been determined. Final status of the Abyei area is not yet determined.

Creation date: 20 Aug 2021 Sources: Geographic data: UNCS. Population statistics: UNHCR Monthly Statistical Reports 31 July 2021 or latest available. Statistics should be considered provisional and subject to change.

Author: UNHCR Regional Bureau for East and Horn of Africa and Great Lakes Feedback: kenrgis@unhcr.org