



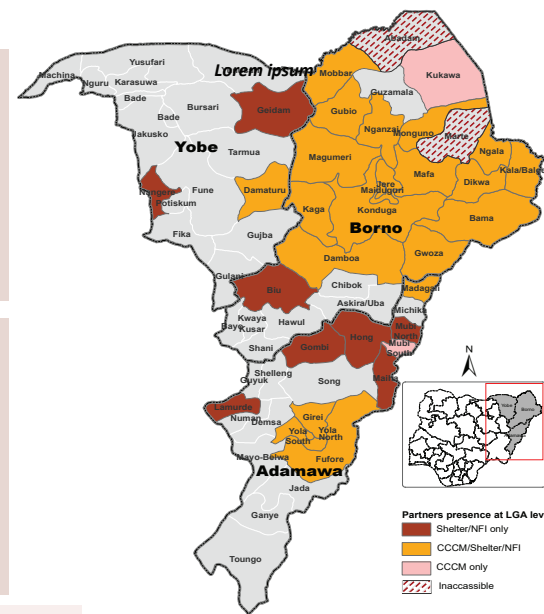
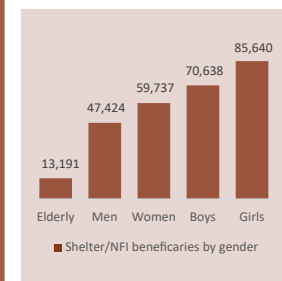
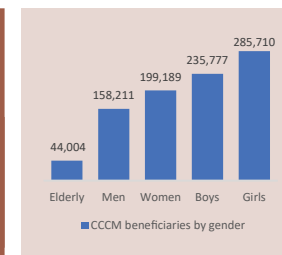
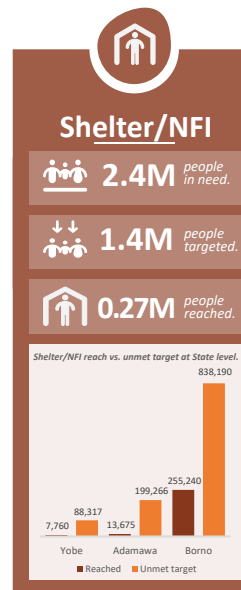
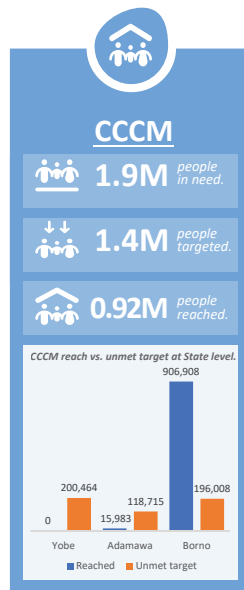
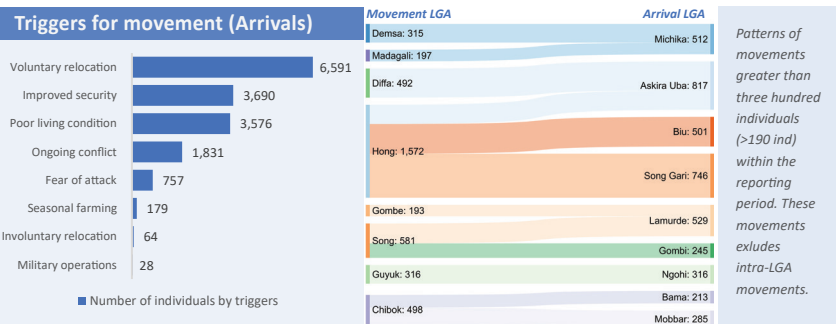
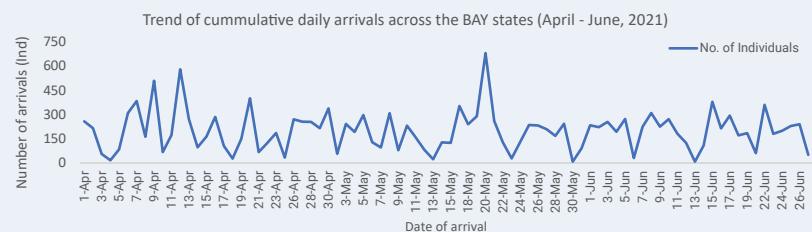
Cross section of completed Bama Shelters in Galtimari Community, Jere LGA.  
Photo credit: Atule Raphael/CRS Nigeria.

## 2021 Response highlights

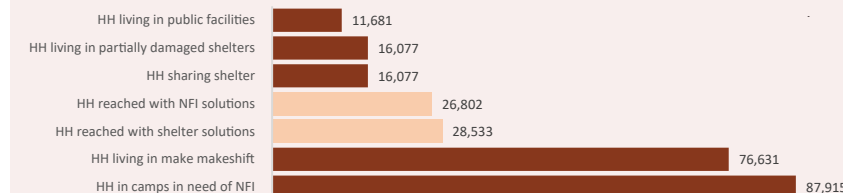
- 28,533 households benefitted from emergency, reinforced and transitional shelter solutions.
- 26,202 households received improved, basic and complimentary NFI kits in kind.
- 17,567 eligible households were manually registered from January till date
- 600 households were reached through cash/voucher for NFI.

## Overview

The reporting period saw a continued displacement of persons from the BAY states. A total of 16,716 individuals (ind), with Askira/Uba (1,715 ind), Gombi (1,634 ind), Hong (1,074 ind) and Michika (1,074 ind) LGAs recording the highest number of arrivals. Additionally, major arrivals were also recorded in Lamurde (899 ind), Girei (795 ind), Mubi South (715 ind), Mubi North (713 ind), Bama (577 ind), Mobbar (492 ind), Maiha (481 ind), Song (440 ind), Demsa (390 ind) and Yola South (321 ind) LGA. The sector partners provided emergency shelter solutions and non-food items (NFI) to 12,270 households (HH) while camp management continued in 184 camps



## Shelter/NFI reach and gaps overview



## Response

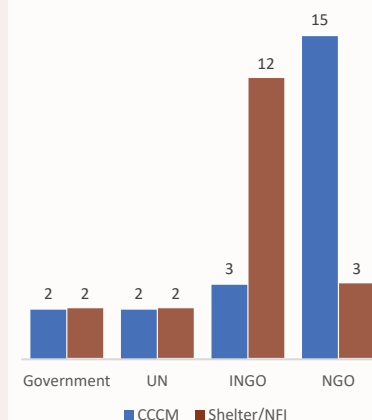
In the second quarter of 2021, the Sector's responses were aimed at improving the living conditions of the displaced population in camps and camp-like settings through the facilitation of coordinated response to IDPs. This was achieved through ensuring the presence of a form of site facilitation 184 camps (formal and informal) in 19 LGAs. Additionally, the sector prioritized camp improvements by providing a revised fire sensitization strategy and a revised camp management guideline with the integration of protection mainstreaming guidelines.

Shelter and NFI partners reached 26,802HH with NFI assistance and 28,533HH with Shelter assistance from January to June 2021. In addition, Shelter partners supported 65 HH returnee with shelter solutions while rehabilitating 4 government buildings that would accommodate 1,600HH living in the host community.

## Challenges/Gaps

Access issues and security restrictions due to frequent attacks have resulted in an uneven presence of sector partners in some parts of BAY states thereby resulting in setback of direct activities implementation. In addition, insufficient funding has hindered the implementation of Shelter and NFI responses in areas with humanitarian access. Based on HRP targets, over 100,000HH are yet to be reached with site facilitation while over 225,000HH are yet to be reached with Shelter/NFI solutions.

## CCCM/Shelter/NFI partner by category



**Source of Data:** CCCM/Shelter NFI Sector 5W, Site tracker, Displacement Tracking Matrix (DTM) round 35, Emergency Tracking Tool (ETT) January - March, 2021 and Financial Tracking Services

For more information contact:  
**Robert Odhiambo:** +234 903 428 3512  
**Mahamat Alhadi:** +234 901 066 0575  
**Email:** cccmshelternga@humanitarianresponse.info  
**Website:** <https://www.humanitarianresponse.info/en/operations/nigeria/shelter-and-nfi>